

OFFICIAL MINIATURE VIEW BOOK

*of the*  
PACIFIC INTERNATIONAL EXPOSITION

SEVENTY NEW VIEWS



OFFICIAL MINIATURE VIEW BOOK  
*of the*  
PANAMA-PACIFIC INTERNATIONAL EXPOSITION



Section of the Exposition Water Front

PUBLISHED BY ROBERT A. REID, OFFICIAL EXPOSITION VIEW BOOK PUBLISHER  
150 Halleck Street, San Francisco

Copyright, 1915, by Panama-Pacific International Exposition Company

## THE BROAD SPIRIT OF THE EXPOSITION.

Education, information and human uplift have, therefore, been the prime factors that have moved us. In our architecture, color landscape, lighting effects, statuary, music and all branches of art and the material things of life as well, we have striven to produce a result that would benefit every visitor that comes within the Exposition gates, mindful always that the event we celebrate warrants superlatively the best effort of all.—C. C. Moore, President of the Exposition.

These exhibits installed upon forty-seven miles of aisles are the basis of a great university. The exhibitors are the faculty, the exhibits are the lessons and the laboratory and the visitors are the student body.—Dr. F. J. V. Skiff, Director-in-Chief.

The work of constructing this Exposition which you people of California have placed in our hands is now completed. We feel justly proud of the fact that we have completed our work on time.—Wm. H. Crocker, Chairman Building Committee.

What is shown in the palaces reflects the achievements of mankind in the arts of peace during the period of ten years of truly wonderful development in science, in art, in commerce and industry.—R. R. Hale, Vice President of Exposition.

This is the world's wonderland, the carnival of all nations, the playground of the universe. Cast aside all care; toss away all worry; be happy; enjoy yourselves; feast your eyes, your minds upon this splendid spectacle.—James Rolph, Jr., Mayor of San Francisco.

On this day, a triumph for you of San Francisco, a day in which you ask all the earth to participate; on this day, with hearts willing and in accord, we all, with a unity for all men from all climes, with a beginning with singular presentment, with symposiums in art, in what science has done, in what has been accomplished by progress and advancement throughout the world, begin in this Exposition a new era for our State.—Hiram Johnson, Governor of California.

The sons of the pioneers, theirs be the glory today, for they slashed the continent in two, they have cut the land that God made as if with a knife, they have made the seas themselves to lift the ships across the barriers and mountains, and this accomplishment we celebrate.—Franklin K. Lane, Secretary of the Interior.



An Exposition Audience Within the Main Entrance



The Tower of Jewels and South Gardens, Looking-Towards Festival Hall



The Tower of Jewels Illuminated



View in Great South Gardens



Mayor Rolph of San Francisco Addressing an Audience on Palm Avenue



The South Gardens, Looking Towards Festival Hall



Palace of Fine Arts



Festival Hall



1—Court of Palms

2—Court of Flowers



Looking from Court of Four Seasons



Fountain of Energy





The Palace of Horticulture



Palace of Horticulture Illuminated



Court of Four Seasons Looking Towards Court of the Universe



Looking from Court of the Four Seasons Towards the Scintillator



Main Entrance Palace of Machinery



The Palace of Machinery from Fillmore Street Entrance



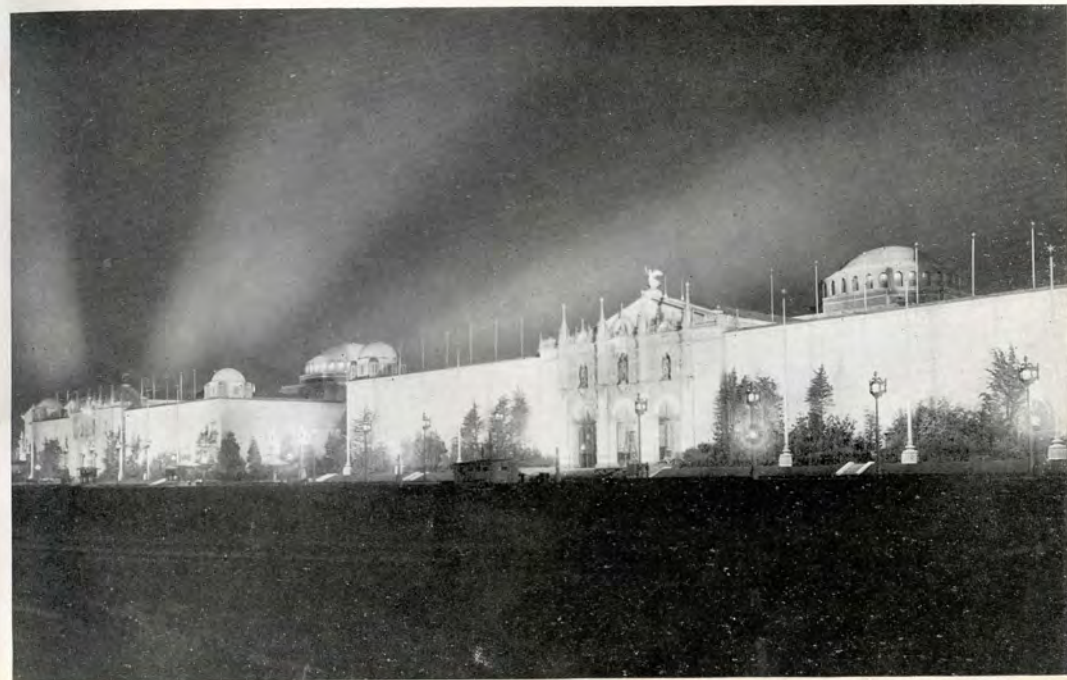
The Esplanade and Column of Progress



Palace of Varied Industries



Sectional View of Court of Four Seasons, Illuminated



Night Illumination Northern Facades Palaces of Transportation and Mines and Metallurgy



Fountain of Ceres Looking Towards Court of Four Seasons



Mullgardt's Tower, Court of Abundance



The Court of Palms



Fountains of the Rising Sun and the Setting Sun in the Court of the Universe



Artistic Adornments in the South Gardens



Palace of Agriculture—Beachey in His Biplane





The Esplanade Looking East from Administration Avenue



Palace of Transportation



Vista Looking Towards "Machinery"  
Vista Looking Towards "Education"



Arch of the Rising Sun



Administration Avenue with Fine Arts Palace on the Left



Canada



Japanese Government Pavilions and Grounds



Philippine Pavilion



Hawaiian Building and Tower of California Building



The Esplanade, Looking Towards the Massachusetts Building



Main Tower, California Building



The California Building



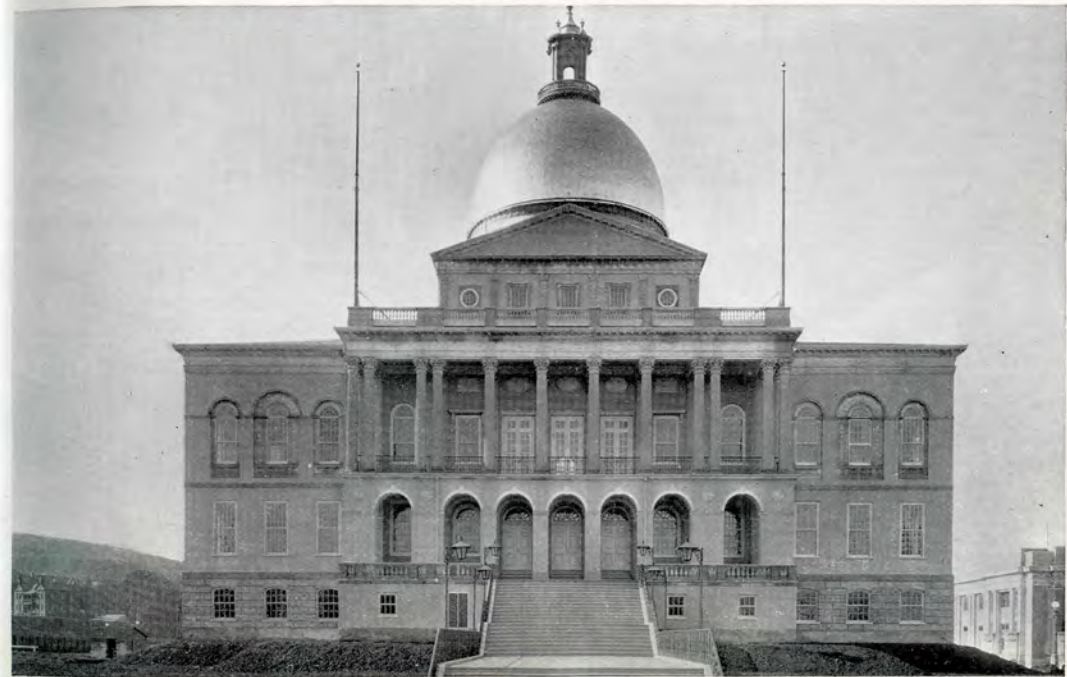
Washington State Building



Oregon State Building

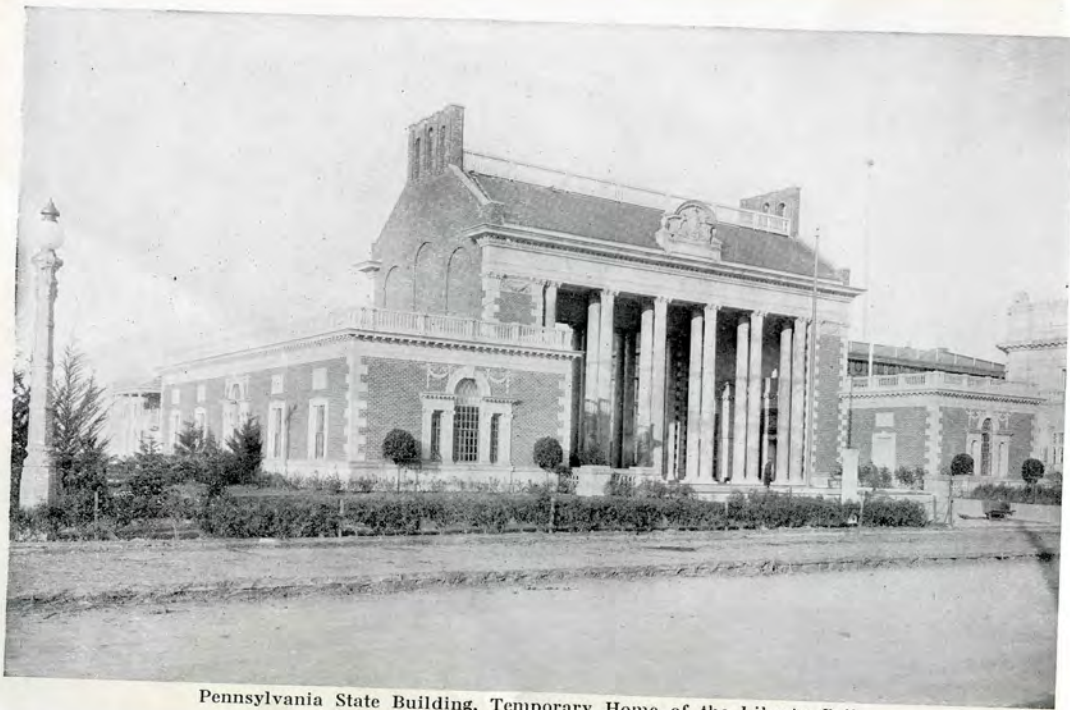


Montana State Building



Massachusetts State Building

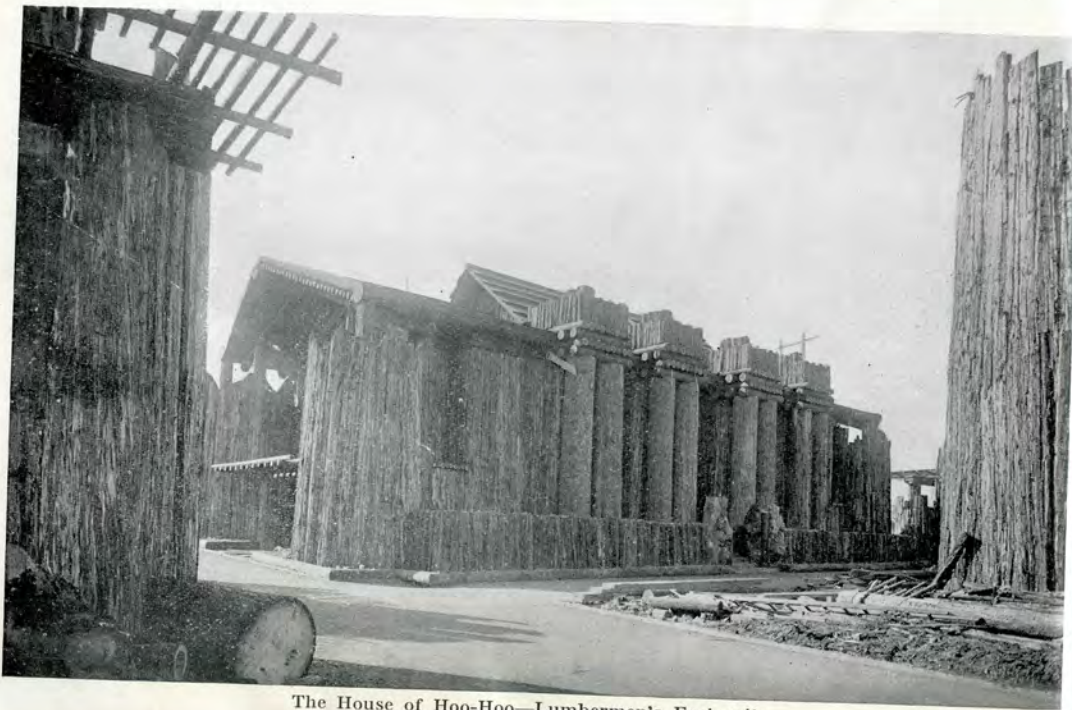




Pennsylvania State Building, Temporary Home of the Liberty Bell



New York State Building



The House of Hoo-Hoo—Lumbermen's Fraternity



The Zone, from the Van Ness Entrance



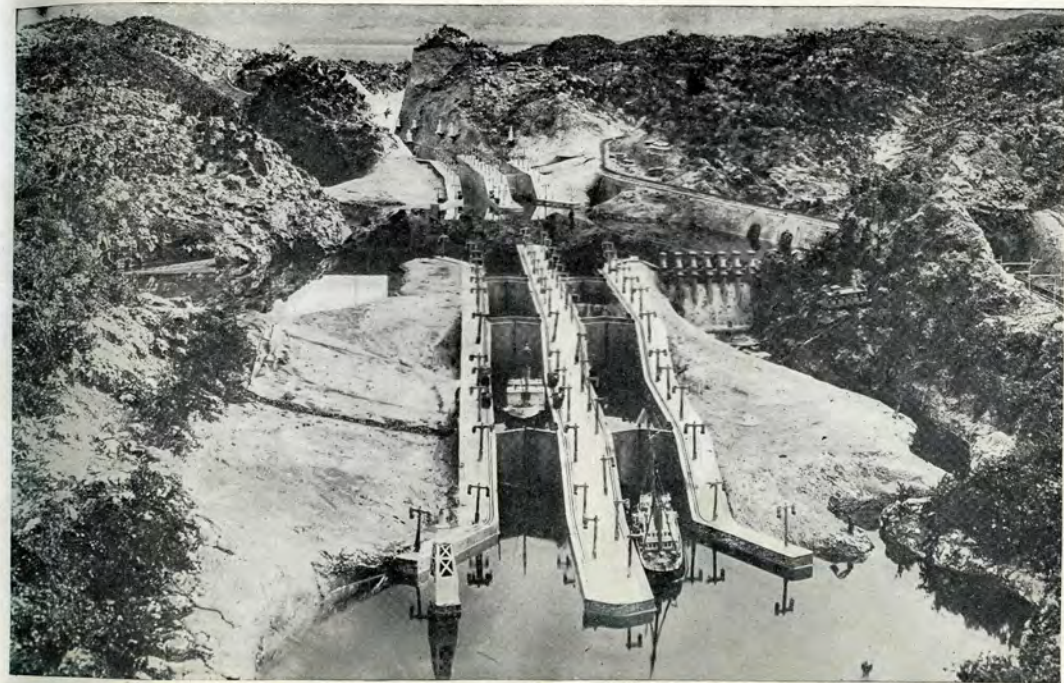
The L. A. Thompson Scenic Railway



The L. A. Thompson Safety Racer



Japan Beautiful



The Miraflores and Pedro Miguel Locks



The End of the Trail





1915

SEVENTY NEW VIEWS





SEVENTY NEW VIEWS

