

**DON'T JUST TALK SAFETY—  
PRACTICE IT**

**TERMINAL SUPERINTENDENTS**

P. V. STONE.....Oakland  
J. F. BAYS.....San Francisco

**ASST. TERMINAL SUPERINTENDENTS**

E. L. BROCKMAN.....San Francisco  
E. L. O'DONNELL.....Oakland  
C. R. URBICK.....Oakland  
G. L. GRACE.....Oakland

**TRAINMASTERS**

T. McDANIEL.....San Francisco  
J. J. TIERNEY.....San Jose  
H. F. FULKERSON.....Watsonville Jct.  
M. H. HOWARD.....Oakland  
J. R. POWELL.....Niles  
W. E. CORBETT.....Suisun-Fairfield

**ASSISTANT TRAINMASTERS**

W. H. JOHNSTON.....Salinas  
K. L. MILLER Jr.....Salinas  
R. D. FRICK.....Oakland  
J. E. JANSEN.....Oakland  
R. L. CONNER.....Oakland  
R. E. HALL.....Oakland  
E. E. SHIPLEY.....Martinez  
E. M. TURNER.....Mulford  
D. E. NICHOLS.....Niles  
T. C. SHANK.....Niles  
R. E. CROSS.....San Jose  
G. E. MYERS.....Warm Springs  
D. K. MEDLEY.....Warm Springs

**ROAD FOREMEN OF ENGINES**

L. E. PROUDFIT.....San Luis Obispo  
E. F. BACHER.....San Jose  
J. E. TOMPKINS.....Oakland  
S. P. OLIVER.....Oakland

**CHIEF TRAIN DISPATCHER**

H. C. HECKER.....Roseville

# SOUTHERN PACIFIC COMPANY



## WESTERN DIVISION TIMETABLE

# 9

**EFFECTIVE SUNDAY, OCTOBER 1, 1967  
AT 12:01 A. M.**

**PACIFIC STANDARD TIME**

**FOR THE GOVERNMENT AND INFORMATION  
OF EMPLOYEES ONLY, WHO MUST ALSO  
CARRY COPY OF CURRENT ISSUE  
OF SPECIAL INSTRUCTIONS**

**M. A. McINTYRE,**  
*General Manager.*

**S. B. BURTON,  
R. L. KING,**  
*Assistant General Managers.*

**J. J. WILLIS,**  
*General Superintendent of Transportation.*

**O. D. GOODWILL,**  
*Superintendent of Transportation.*

**W. M. JONES,**  
*Superintendent.*

**J. L. HARRISON,  
V. R. RUSSELL,**  
*Assistant Superintendents*

WESTERN DIVISION TIMETABLE No. 9, OCTOBER 1, 1967

SAN FRANCISCO SUBDIVISION

EASTWARD

FIRST CLASS

130	128	126	124	122	168	372	120	118	166	116	114	98	112	110	108	Mile Post
Passenger	Passenger	Del Monte	Passenger	Passenger	Passenger	Adv. C. M. E.	Passenger	Passenger	Passenger	Passenger	Passenger	Coast Daylight	Passenger	Passenger	Passenger	
Leave Daily Ex. Sat. Sun. and Holidays	Leave Daily Ex. Sat., Sun. and Holidays	Leave Daily	Leave Daily Ex. Sat., Sun. and Holidays	Leave Daily Ex. Sat. Sun. and Holidays	Leave Sat., Sun. and Holidays	Lv. Daily Ex. Fri. Sat. Sun.	Leave Daily Ex. Sundays and Holidays	Leave Daily	Lv. Saturday Ex. Holidays	Leave Daily	Leave Daily	Leave Daily	Leave Daily	Leave Daily Ex. Sat., Sun. and Holidays	Leave Daily	
PM 5.14	PM 4.55	PM 4.50	PM 4.40	PM 4.15	PM 4.15	PM 3.55	PM 3.00	PM 1.45	PM 12.30	AM 11.00	AM 8.35	AM 8.25	AM 7.10	AM 6.10	AM 12.35	
	s 4.59	s 4.54	s 4.44	s 4.19			s 3.04		s 12.34							0.
		s 4.58	s 4.48	s 4.23												1.
			s 4.52	s 4.27			s 3.09		s 12.38				s 7.18		s 12.44	4.
			s 4.57	s 4.31												8.
	s 5.09		s 4.59	s 4.33	s 4.28		s 3.14	s 1.58	s 12.43	s 11.13	s 8.48		s 7.23	s 6.23		9.
	s 5.12	s 5.08	s 5.03	s 4.37	s 4.31		s 3.17	s 2.01	s 12.46	s 11.16	s 8.51		s 7.26	s 6.26	s 12.50	11.
		s 5.12		s 4.41	s 4.34	4.08	s 3.20	s 2.04	s 12.49	s 11.19	s 8.55		s 7.29	s 6.29	s 12.52	13.
	s 5.17			s 4.44	s 4.37		s 3.23	s 2.06	s 12.51	s 11.22	s 8.58		s 7.32	s 6.32	s 12.55	15.
		s 5.17		s 4.46	s 4.40		s 3.25	s 2.09	s 12.53	s 11.25	s 9.01		s 7.34	s 6.35	s 12.57	16.
	s 5.22		s 5.12	s 4.50	s 4.44		s 3.28	s 2.12	s 12.55	s 11.29	s 9.05		s 7.37	s 6.39	s 12.59	17.
	s 5.25			s 4.53					s 12.57				s 7.39			18.
			s 5.17	s 4.56	s 4.48		s 3.32	s 2.15	s 12.59	s 11.33	s 9.08		s 7.42	s 6.43	s 1.03	20.
	s 5.29			s 5.00	s 4.51		s 3.35	s 2.18	s 1.02	s 11.36	s 9.11		s 7.45	s 6.46	s 1.06	21.
		s 5.26		s 5.03	s 4.54		s 3.38	s 2.21	s 1.05	s 11.39	s 9.14		s 7.48	s 6.49	s 1.09	23.
			s 5.25	s 5.07	s 4.58		s 3.42	s 2.24	s 1.08	s 11.43	s 9.18		s 7.51	s 6.53	s 1.13	25.
5.42	5.35	5.30	5.26	5.08	4.59	4.22	3.43	2.25	1.09	11.44	9.19	8.54	7.52	6.54	1.14	26.
		s 5.33		s 5.12	s 5.01		s 3.45	s 2.27	s 1.11	s 11.46	s 9.22		s 7.54	s 6.56	s 1.16	27.
	s 5.39			s 5.16	s 5.04		s 3.48	s 2.30	s 1.14	s 11.49	s 9.24		s 7.57	s 6.59	s 1.19	28.
		s 5.39		s 5.19	s 5.07		s 3.51	s 2.33	s 1.17	s 11.52	s 9.27	s 9.02	s 8.00	s 7.03	s 1.21	30.
s 5.51			s 5.35	s 5.23	s 5.10		s 3.54	s 2.36	s 1.20	s 11.55	s 9.30		s 8.03	s 7.06	s 1.24	31.
	s 5.47															34.
s 5.59	s 5.50	s 5.47		s 5.30	s 5.16		s 4.00	s 2.42	s 1.25	s 12.01	s 9.35		s 8.09	s 7.12	s 1.30	36.
s 6.05			s 5.44	s 5.35	s 5.20		s 4.04	s 2.45	s 1.29	s 12.05	s 9.39		s 8.13	s 7.16	s 1.34	38.
s 6.13	6.01	s 5.57	5.50	s 5.42	s 5.27	4.41	s 4.11	s 2.52	s 1.36	s 12.12	s 9.45	9.14	s 8.20	s 7.22	s 1.42	44.
																45.
s 6.23	s 6.10	s 6.05	s 5.57	s 5.50	s 5.35	5.25	s 4.20	s 3.00	s 1.45	s 12.20	s 9.50	s 9.19	s 8.22	s 7.24	s 1.50	45.
PM	PM	6.10	PM	PM	PM		PM	PM	PM	PM	AM	9.26	AM	AM	AM	46.
		6.23					5.40					9.40				5.
		6.26					5.44					9.43				6.
		6.35					5.59					9.52				7.
		s 6.41					6.04					9.57				8.
																8.
		6.58					6.21					10.13				9.
		s 7.07					6.31					10.23				10.
		PM														
Arrive Daily Ex. Sat. Sun. and Holidays	Arrive Daily Ex. Sat., Sun. and Holidays	Arrive Daily	Arrive Daily Ex. Sat., Sun. and Holidays	Arrive Daily Ex. Sat., Sun. and Holidays	Arrive Sat., Sun. and Holidays	Ar. Daily Ex. Fri. Sat. Sun.	Arrive Daily Ex. Sundays and Holidays	Arrive Daily	Ar. Saturday Ex. Holidays	Arrive Daily	Arrive Daily	Arrive Daily	Arrive Daily	Arrive Daily Ex. Sat., Sun. and Holidays	Arrive Daily	
130	128	126	124	122	168	372	120	118	166	116	114	98	112	110	108	

**RULE 5.** Time applies at the location of station sign at stations between San Francisco and San Jose.  
 Time applies at the end of double track at Coyote and Gilroy, except that of eastward trains at Gilroy will apply at train-order signal.  
**RULE S-72.** Exception: No. 98 is superior to Nos. 371, 373, 75 and 141.

SAN FRANCISCO SUBDIVISION

WESTWARD

FIRST CLASS

Mile Post Location	STATIONS SIDING CAPACITIES AND FACILITIES	Distance from Watsonville Jct.	WESTWARD												
			FIRST CLASS												
			371	113	373	161	115	163	117	119	121	123	165		
			Adv. C.M.W.	Passenger	C.M.W.	Passenger	Passenger	Passenger	Passenger	Passenger	Passenger	Passenger	Passenger	Passenger	Passenger
			Ar. Daily Ex. Sat. Sun. Mon.	Arrive Daily Ex. Sunday and Holidays	Arrive Daily	Arrive Sunday and Holidays	Arrive Daily Ex. Sat. Sun. and Holidays	Ar. Saturday Ex. Holidays	Arrive Daily Ex. Sat. Sun. and Holidays	Arrive Daily Ex. Sat., Sun. and Holidays	Arrive Daily Ex. Sat., Sun. and Holidays	Arrive Daily Ex. Sat., Sun. and Holidays	Arrive Daily Ex. Sat., Sun. and Holidays	Arrive Daily Ex. Sat., Sun. and Holidays	Arrive Sat., Sun. and Holidays
				AM 6.25	AM 6.30	AM 6.45	AM 7.15	AM 7.25	AM 7.35	AM 7.45	AM 7.55	AM 8.00	AM 8.05		
0.0	TO-R SAN FRANCISCO BDIKPY	96.5													
1.9	23rd STREET	94.6													
4.1	PAUL AVE.	92.4													
5.2	BAYSHORE BDITKP	91.3													
8.6	BUTLER ROAD P	87.9													
9.3	SO. SAN FRANCISCO KP	87.2													
11.6	SAN BRUNO P	84.9													
13.7	MILLBRAE M-44 P	82.8													
15.2	BROADWAY P	81.3													
16.3	BURLINGAME P	80.2													
17.9	SAN MATEO P	78.6													
18.9	HAYWARD PARK M-56 P	77.6													
20.3	HILLSDALE P	76.2													
21.9	BELMONT P	74.6													
23.2	SAN CARLOS M-43 P	73.3													
25.4	REDWOOD CITY R KP	71.1													
26.2	REDWOOD JCT. TO BIKPY	70.3													
27.8	ATHERTON	68.7													
28.9	MENLO PARK	67.6													
30.1	PALO ALTO P	66.4													
31.8	CALIFORNIA AVE. M-44 PY	64.7													
34.8	CASTRO	61.7													
36.1	MOUNTAIN VIEW	60.4													
38.8	SUNNYVALE TO-R BP	57.7													
44.3	SANTA CLARA TO-R IKP	52.2													
45.2	SAN JOSE YARD R BKP	51.3													
45.7	COLLEGE PARK TO-R IP	50.8													
46.9	SAN JOSE TO-R BDIKPTY	49.6													
51.4	LICK IP	45.1													
55.3	COYOTE P DT	37.3													
63.1	PERRY 125 P	34.1													
66.3	RUCKER 125 P	23.4													
77.0	GILROY TO-R BKP	19.7													
80.7	CARNADERO P DT	17.2													
83.2	CORPORAL P DT	14.0													
86.4	LOGAN P DT	7.2													
93.2	WATSONVILLE JCT. TO-R BDKPTY	0.0													
100.4															
	(96.5)														
			Lv. Daily Ex. Sat. Sun. Mon.	Leave Daily Ex. Sunday and Holidays	Leave Daily	Leave Sunday and Holidays	Leave Daily Ex. Sat. Sun. and Holidays	Lv. Saturday Ex. Holidays	Leave Daily Ex. Sat. Sun. and Holidays	Leave Daily Ex. Sat., Sun. and Holidays	Leave Daily Ex. Sat., Sun. and Holidays	Leave Daily Ex. Sat., Sun. and Holidays	Leave Daily Ex. Sat., Sun. and Holidays	Leave Sat., Sun. and Holidays	
			371	113	373	161	115	163	117	119	121	123	165		

**RULE 5.** Time applies at the location of station sign at stations between San Francisco and San Jose.  
 Time applies at the end of double track at Coyote and Gilroy, except that of eastward trains at Gilroy will apply at train-order signal.  
**RULE S-72.** Exception: No. 98 is superior to Nos. 371, 373, 75 and 141.

SAN FRANCISCO SUBDIVISION

EASTWARD

FIRST CLASS

148	374	146	144	142	140	170	138	136	134	132	Mile Post Location
Passenger	C. M. E.	Passenger	Passenger	Passenger	Passenger	Passenger	Passenger	Passenger	Passenger	Passenger	
Leave Daily Ex. Sat., Sun. and Holidays	Leave Daily Ex. Sunday	Leave Daily Ex. Saturday	Leave Daily Ex. Sunday and Holidays	Leave Daily Ex. Sat., Sun. and Holidays	Leave Daily Ex. Sat., Sun. and Holidays	Lv. Saturday Ex. Holidays	Leave Daily Ex. Sat., Sun. and Holidays	Leave Daily Ex. Sat., Sun. and Holidays	Leave Daily Ex. Sat., Sun. and Holidays	Leave Daily Ex. Sat., Sun. and Holidays	
PM 8.35	PM 7.35	PM 7.10	PM 6.30	PM 6.00	PM 5.45	PM 5.30	PM 5.26	PM 5.23	PM 5.20	PM 5.17	0.0
					s 5.49	s 5.33					1.9
											4.1
s 8.43											5.2
											8.6
s 8.48			s 6.44	s 6.13		s 5.43	s 5.40				9.3
s 8.51		s 7.24	s 6.47	s 6.17	s 6.03	s 5.46	s 5.44				11.6
s 8.54		s 7.26	s 6.49	s 6.20	s 6.06	s 5.49	s 5.49				13.7
s 8.57		s 7.29	s 6.52	s 6.23	s 6.09	s 5.52	s 5.52				15.2
s 8.59		s 7.32	s 6.55	s 6.26	s 6.12	s 5.54		s 5.47			16.3
s 9.02		s 7.35	s 6.58	s 6.29	s 6.16	s 5.57		s 5.51			17.9
s 9.04		s 7.37	s 7.00	s 6.32	s 6.19	s 6.00	s 6.01				18.9
s 9.06		s 7.40	s 7.03	s 6.35	s 6.22	s 6.03		s 5.55			20.3
s 9.09		s 7.43	s 7.06	s 6.39	s 6.25	s 6.06			s 5.47		21.9
s 9.12		s 7.46	s 7.09	s 6.42	s 6.28	s 6.09			s 5.51		23.2
s 9.15		s 7.50	s 7.12	s 6.46	s 6.32	s 6.12	s 6.09			s 5.46	25.4
9.16	8.02	7.51	7.13	6.47	6.33	6.13	6.10	6.02	5.56	5.47	26.2
s 9.18		s 7.53	s 7.16	s 6.50	s 6.37	s 6.15	s 6.14		s 5.59		27.8
s 9.21		s 7.56	s 7.19	s 6.53	s 6.40	s 6.17		s 6.07		s 5.52	28.9
s 9.24		s 7.59	s 7.22	s 6.56	s 6.44	s 6.20		s 6.10		s 5.56	30.1
s 9.26		s 8.02	s 7.25	s 6.58	s 6.47	s 6.23	s 6.20		s 6.06	s 5.59	31.8
									s 6.10		34.8
s 9.32		s 8.08	s 7.31	s 7.04	s 6.54	s 6.29	s 6.26	s 6.18		s 6.06	36.1
s 9.36		s 8.12	s 7.35	s 7.08	s 6.59	s 6.32	s 6.31	s 6.22		s 6.10	38.8
s 9.43	8.20	s 8.18	s 7.41	7.14	s 7.06	s 6.39	s 6.38	6.28	s 6.22	s 6.18	44.3
											45.2
											45.7
s 9.50 PM	9.15	s 8.25 PM	s 7.47 PM	s 7.21 PM	s 7.14 PM	s 6.45 PM	s 6.46 PM	s 6.36 PM	s 6.30 PM	s 6.27 PM	46.9
											51.4
											55.3
	9.30										63.1
	9.34										66.3
	9.49										77.0
	9.54										80.7
											83.2
											86.4
	10.10										93.2
	10.20 PM										100.4
Arrive Daily Ex. Sat., Sun. and Holidays	Arrive Daily Ex. Sunday	Arrive Daily Ex. Saturday	Arrive Daily Ex. Sunday and Holidays	Arrive Daily Ex. Sat., Sun. and Holidays	Arrive Daily Ex. Sat., Sun. and Holidays	Ar. Saturday Ex. Holidays	Arrive Daily Ex. Sat., Sun. and Holidays	Arrive Daily Ex. Sat., Sun. and Holidays	Arrive Daily Ex. Sat., Sun. and Holidays	Arrive Daily Ex. Sat., Sun. and Holidays	
148	374	146	144	142	140	170	138	136	134	132	

STATIONS SIDING CAPACITIES AND FACILITIES

Yard Limits	TO-R SAN FRANCISCO	BKIPY	96.5
	23rd STREET		
	PAUL AVE.		92.4
	BAYSHORE	BDITKP	91.3
	BUTLER ROAD	P	87.9
	SO. SAN FRANCISCO	KP	87.2
	SAN BRUNO	P	84.9
M44	MILLBRAE	P	82.8
	BROADWAY	P	81.3
	BURLINGAME	P	80.2
	SAN MATEO	P	78.6
M-56	HAYWARD PARK	P	77.6
	HILLSDALE	P	76.2
	BELMONT	P	74.6
M-43	SAN CARLOS	P	73.3
Yd. Limits.	REDWOOD CITY	KP	71.1
TO	REDWOOD JCT.	BIKPY	70.3
	ATHERTON		68.7
	MENLO PARK		67.6
	PALO ALTO	P	66.4
M-44	CALIFORNIA AVE.	PY	64.7
	CASTRO		61.7
	MOUNTAIN VIEW		60.4
TO-R	SUNNYVALE	BP	57.7
Yd. Limits	SANTA CLARA	IKP	52.2
R	SAN JOSE YARD	BKP	51.3
TO-R	COLLEGE PARK	IP	50.8
TO-R	SAN JOSE	BKIPY	49.6
	LICK	IP	45.1
	COYOTE	P	37.3
125	PERRY	P	34.1
125	RUCKER	P	23.4
Yd. Lmts. TO-R	GILROY	BKP	19.7
	CARNADERO	P	17.2
	CORPORAL	P	14.0
	LOGAN	P	7.2
Yd. Lmts. TO-R	WATSONVILLE JCT.	BKPTY	0.0

**RULE 5.** Time applies at the location of station sign at stations between San Francisco and San Jose.

Time applies at the end of double track at Coyote and Gilroy, except that of eastward trains at Gilroy will apply at train-order signal.

**RULE S-72.** Exception: No. 98 is superior to Nos. 371, 373, 75 and 141.

(96.5)

SAN FRANCISCO SUBDIVISION

WESTWARD

FIRST CLASS

125	127	129	131	75	133	135	137	167	139	141	169	143	145	171	147
Passenger	Passenger	Passenger	Passenger	Lark	Passenger	Passenger	Passenger	Passenger	Passenger	Del Monte	Passenger	Passenger	Passenger	Passenger	Passenger
Arrive Daily Ex. Sat., Sun. and Holidays	Arrive Daily Ex. Sat., Sun. and Holidays	Arrive Daily Ex. Sat., Sun. and Holidays	Arrive Daily Ex. Sat., Sun. and Holidays	Arrive Daily	Arrive Daily Ex. Sat., Sun. and Holidays	Arrive Daily Ex. Sat., Sun. and Holidays	Arrive Daily Ex. Sat., Sun. and Holidays	Ar. Saturday Ex. Holidays	Arrive Daily Ex. Sunday and Holidays	Arrive Daily	Arrive Sunday and Holidays	Arrive Daily Ex. Sunday and Holidays	Arrive Daily Ex. Sunday and Holidays	Arrive Sunday and Holidays	Arrive Daily Ex. Sat., Sun. and Holidays
AM	AM	AM	AM	AM	AM	AM	AM	AM	AM	AM	AM	PM	PM	PM	PM
s 8.05	s 8.09	s 8.13	s 8.20	s 8.30	s 8.40	s 8.50	s 9.18	s 9.35	s 10.05	s 11.25	s 11.55	s 12.50	s 2.05	s 3.05	s 4.10
			s 8.11								s 11.40		s 1.50	s 2.53	
s 7.49					s 8.24	s 8.35	s 9.02	s 9.15			s 11.35		s 1.45	s 2.47	s 3.54
					s 8.20	s 8.30	s 8.58	s 9.11		s 11.03	s 11.30	s 12.30	s 1.42	s 2.42	s 3.49
s 7.42			s 7.58			s 8.26	s 8.55	s 9.08		s 10.59	s 11.28	s 12.27	s 1.39	s 2.39	s 3.46
s 7.38					s 8.14	s 8.23	s 8.52	s 9.06	s 9.43	s 10.56	s 11.25	s 12.24	s 1.37	s 2.36	s 3.43
	s 7.45			s 7.59	s 8.11		s 8.50	s 9.04	s 9.40	s 10.54	s 11.23	s 12.22	s 1.35	s 2.34	s 3.41
	s 7.41				s 8.07	s 8.19	s 8.47	s 9.01	s 9.37	s 10.50	s 11.20	s 12.19	s 1.32	s 2.31	s 3.38
	s 7.38				s 8.05			s 8.59							
		s 7.46			s 8.02	s 8.15	s 8.43	s 8.57		s 10.45	s 11.17	s 12.15	s 1.27	s 2.27	s 3.35
		s 7.43			s 7.59	s 8.12	s 8.40	s 8.55		s 10.42	s 11.15	s 12.12	s 1.24	s 2.25	s 3.33
s 7.27			s 7.45		s 7.56	s 8.09	s 8.37	s 8.53	s 9.29	s 10.38	s 11.13	s 12.09	s 1.21	s 2.23	s 3.30
	s 7.29		s 7.41		s 7.52	s 8.06	s 8.34	s 8.50	s 9.26	s 10.35	s 11.10	s 12.05	s 1.18	s 2.20	s 3.27
7.21	7.27	7.36	7.39	7.44	7.49	8.04	8.32	8.48	9.23	10.32	11.08	12.03	1.15	2.18	3.25
s 7.19		s 7.34			s 7.47	s 8.02	s 8.30	s 8.46	s 9.21	s 10.29	s 11.06	s 12.01 PM	s 1.13	s 2.16	
s 7.16					s 7.44	s 8.00	s 8.27	s 8.44	s 9.18	s 10.26	s 11.04	s 11.58	s 1.10	s 2.14	s 3.22
		s 7.29		s 7.37	s 7.41	s 7.57	s 8.24	s 8.42	s 9.15	s 10.23	s 11.02	s 11.55	s 1.07	s 2.12	s 3.19
	s 7.18		s 7.29		s 7.38		s 8.21	s 8.39	s 9.13	s 10.18	s 10.59	s 11.52	s 1.04	s 2.09	s 3.16
		s 7.17													
	s 7.11		s 7.23		s 7.32	s 7.48	s 8.16	s 8.34	s 9.08	s 10.12	s 10.54	s 11.46	s 12.59	s 2.04	s 3.10
s 7.02		s 7.11	s 7.17		s 7.27		s 8.11	s 8.30	s 9.04	s 10.07	s 10.50	s 11.42	s 12.55	s 2.00	s 3.06
6.54	s 7.00	7.04	s 7.10	7.17	s 7.21	7.39	s 8.05	s 8.24	8.59	s 10.00	s 10.44	s 11.35	s 12.49	s 1.55	s 3.00
6.50 AM	6.55 AM	7.00 AM	7.04 AM	s 7.13 6.55	7.17 AM	7.35 AM	8.00 AM	8.20 AM	8.55 AM	s 9.55 9.44	10.40 AM	11.30 AM	12.45 PM	1.50 PM	2.57 2.55 PM
				6.44						9.30					
				6.36						9.26					
				6.32						9.17					
				6.20						9.12					
				6.16											
										8.46 AM					
Leave Daily Ex. Sat., Sun. and Holidays	Leave Daily Ex. Sat., Sun. and Holidays	Leave Daily Ex. Sat., Sun. and Holidays	Leave Daily Ex. Sat., Sun. and Holidays	Leave Daily	Leave Daily Ex. Sat., Sun. and Holidays	Leave Daily Ex. Sat., Sun. and Holidays	Leave Daily Ex. Sat., Sun. and Holidays	Lv. Saturday Ex. Holidays	Leave Daily Ex. Sunday and Holidays	Leave Daily	Leave Sunday and Holidays	Leave Daily Ex. Sunday and Holidays	Leave Daily Ex. Sunday and Holidays	Leave Sunday and Holidays	Leave Daily Ex. Sat., Sun. and Holidays
125	127	129	131	75	133	135	137	167	139	141	169	143	145	171	147

**RULE 5.** Time applies at the location of station sign at stations between San Francisco and San Jose.  
**Time applies at the end of double track at Coyote and Gilroy, except that of eastward trains at Gilroy will apply at train-order signal.**  
**RULE S-72.** Exception: No. 98 is superior to Nos. 371, 373, 75 and 141.

SAN FRANCISCO SUBDIVISION

EASTWARD

SECOND CLASS

FIRST CLASS

934 Freight  
932 Freight  
930 Freight

150 Passenger  
76 Lark

Leave Daily Leave Daily Leave Daily

Leave Daily Leave Daily

PM 10.00 PM 9.00

**RULE 5.** Time applies at the location of station sign at stations between San Francisco and San Jose.

Time applies at the end of double track at Coyote and Gilroy, except that of eastward trains at Gilroy will apply at train-order signal.

**RULE S-72.** Exception: No. 98 is superior to Nos. 371, 373, 75 and 141.

PM 4.20 AM 7.05 AM 1.20

PM 11.15 s 10.15 s 11.29

Arrive Daily Arrive Daily Arrive Daily

Arrive Daily Arrive Daily

934 932 930

150 76

Station Number

Mile Post Location

Distance from Watsonville Jct.

STATIONS  
SIDING CAPACITIES AND FACILITIES

Yard Limits	TO-R	SAN FRANCISCO <sup>BKIPY</sup>		96.5
		23rd STREET		94.6
Yard Limits	TO-R	PAUL AVE.		92.4
		BAYSHORE <sup>BKITKP</sup>		91.3
Yard Limits	TO-R	BUTLER ROAD <sup>P</sup>		87.9
		SO. SAN FRANCISCO <sup>KP</sup>		87.2
Yard Limits	TO-R	SAN BRUNO <sup>P</sup>		84.9
		MILLBRAE <sup>P</sup>		82.8
Yard Limits	TO-R	BROADWAY <sup>P</sup>		81.3
		BURLINGAME <sup>P</sup>		80.2
Yard Limits	TO-R	SAN MATEO <sup>P</sup>		78.6
		HAYWARD PARK <sup>P</sup>		77.6
Yard Limits	TO-R	HILLSDALE <sup>P</sup>		76.2
		BELMONT <sup>P</sup>		74.6
Yard Limits	TO-R	SAN CARLOS <sup>P</sup>		73.3
		REDWOOD CITY <sup>KP</sup>		71.1
Yard Limits	TO-R	REDWOOD JCT. <sup>BKIPY</sup>		70.3
		ATHERTON		68.7
Yard Limits	TO-R	MENLO PARK <sup>P</sup>		67.6
		PALO ALTO <sup>PY</sup>		66.4
Yard Limits	TO-R	CALIFORNIA AVE. <sup>P</sup>		64.7
		CASTRO		61.7
Yard Limits	TO-R	MOUNTAIN VIEW <sup>BP</sup>		60.4
		SUNNYVALE <sup>BP</sup>		57.7
Yard Limits	TO-R	SANTA CLARA <sup>IKP</sup>		52.2
		SAN JOSE YARD <sup>BKP</sup>		51.3
Yard Limits	TO-R	COLLEGE PARK <sup>IP</sup>		50.8
		SAN JOSE <sup>BKITKPY</sup>		49.6
Yard Limits	TO-R	LICK <sup>IP</sup>		45.1
		COYOTE <sup>P</sup>		37.3
Yard Limits	TO-R	PERRY <sup>P</sup>		34.1
		RUCKER <sup>P</sup>		23.4
Yard Limits	TO-R	GILROY <sup>BKP</sup>		19.7
		CARNADERO <sup>P</sup>		17.2
Yard Limits	TO-R	CORPORAL <sup>P</sup>		14.0
		LOGAN <sup>P</sup>		7.2
Yard Limits	TO-R	WATSONVILLE JCT. <sup>BKITKPY</sup>		0.0

(96.5)

SAN FRANCISCO SUBDIVISION

WESTWARD

FIRST CLASS

149 Passenger	173 Passenger	151 Passenger	99 Coast Daylight	153 Passenger	175 Passenger	155 Passenger
Arrive Daily Ex. Sat. Sun. and Holidays	Ar. Saturday Ex. Holidays	Arrive Daily	Arrive Daily	Arrive Daily	Arrive Sunday and Holidays	Arrive Daily
PM	PM	PM	PM	PM	PM	PM
s 5.10	s 5.50	s 6.35	s 7.00	s 8.40	s 9.45	s 11.20
		s 6.25			s 9.33	s 11.07
s 4.53	s 5.32	s 6.20		s 8.21	s 9.27	s 11.02
s 4.48	s 5.27	s 6.15		s 8.17	s 9.21	s 10.57
s 4.45	s 5.24	s 6.12	6.37	s 8.14	s 9.18	s 10.54
s 4.42	s 5.21	s 6.09		s 8.11	s 9.15	s 10.51
s 4.39	s 5.19	s 6.07		s 8.09	s 9.13	s 10.49
s 4.36	s 5.16	s 6.03		s 8.06	s 9.10	s 10.46
s 4.33		s 5.59				
s 4.30	s 5.12	s 5.57		s 8.01	s 9.07	s 10.42
s 4.27	s 5.10	s 5.54		s 7.58	s 9.05	s 10.39
s 4.24	s 5.08	s 5.51		s 7.55	s 9.03	s 10.36
s 4.21	s 5.05	s 5.47		s 7.51	s 9.00	s 10.33
4.19	5.03	5.45	6.23	7.49	8.58	10.31
s 4.17	s 5.01	s 5.43		s 7.47	s 8.56	s 10.29
s 4.14	s 4.59	s 5.40		s 7.45	s 8.54	s 10.27
s 4.12	s 4.57	s 5.37	s 6.19	s 7.42	s 8.52	s 10.24
s 4.09	s 4.54	s 5.34		s 7.39	s 8.49	s 10.21
s 4.03	s 4.49	s 5.28		s 7.34	s 8.44	s 10.15
s 3.59	s 4.45	s 5.22		s 7.30	s 8.40	s 10.11
s 3.53	s 4.39	s 5.15	6.04	s 7.24	s 8.34	s 10.05
s 3.50		s 5.12				
3.48 PM	4.35 PM	5.10 PM	s 5.59 5.53	7.20 PM	8.30 PM	10.00 PM
			5.44			
			5.37			
			5.34			
			5.24			
			5.20			
			4.55 PM			
Leave Daily Ex. Sat. Sun. and Holidays	Lr. Saturday Ex. Holidays	Leave Daily	Leave Daily	Leave Daily	Leave Sunday and Holidays	Leave Daily
149	173	151	99	153	175	155

**RULE 5.** Time applies at the location of station sign at stations between San Francisco and San Jose.

Time applies at the end of double track at Coyote and Gilroy, except that of eastward trains at Gilroy will apply at train-order signal.

**RULE S-72.** Exception: No. 98 is superior to Nos. 371, 373, 75 and 141.

WESTERN DIVISION TIMETABLE No. 9, OCTOBER 1, 1967

8

SALINAS SUBDIVISION

<b>EAST-WARD</b>	Mile Post Location	STATIONS SIDING CAPACITIES AND FACILITIES	Station Number	Distance from Lake Majella	<b>WEST-WARD</b>
<b>FIRST CLASS</b>					<b>FIRST CLASS</b>
<b>126</b> Del Monte		<b>Monterey Branch</b>			<b>141</b> Del Monte
Leave Daily					Arrive Daily
PM 7.24	110.4	Yd. Lmts. TO-R <b>CASTROVILLE</b> PY	32520	19.6	AM 8.32
f 7.39	119.2	70 <b>ORD</b> P	32620	10.8	f 8.14
f	123.3	Yard Limits { <b>SEASIDE</b>	32635	6.7	f
f	124.9	<b>DEL MONTE</b>	32645	5.1	f
s 8.00 PM	125.7	30 TO-R <b>MONTEREY</b> KP	32650	4.3	8.00 AM
	128.3	Yd. Lmts. <b>PACIFIC GROVE</b> P	32660	1.7	
	130.0	<b>LAKE MAJELLA</b>	32670	0.0	
Arrive Daily		(19.6)			Leave Daily
<b>126</b>					<b>141</b>

**RULE 5.** Time applies for westward trains at Monterey at west switch of storage track.

ADDITIONAL STATIONS				
Capacity and Direction of entry into Spurs	Mile Post	NAME	Station Number	
<b>Monterey Branch</b>				
115E ..	114.8	Lapis..... (Spur)	32610	
.. ..	117.3	Marina.....	32615	
13E ..	122.1	Pratto..... (Spur)	32630	
13W ..	124.3	Retreat..... (Spur)	32640	
27E ..	129.9	Asllomar.....	32665	

<b>EAST-WARD</b>	Mile Post Location	STATIONS SIDING CAPACITIES AND FACILITIES	Station Number	Distance from Spreckels	<b>WEST-WARD</b>
		<b>Spreckels Branch</b>			
120.3	Yd. Lmts. {	<b>SPRECKELS JCT.</b> PY	32730	2.5	
122.8		<b>SPRECKELS</b> P	32740	0.0	
		(2.5)			

EASTWARD

SECOND CLASS			FIRST CLASS				
924	922	920	76	374	126	372	98
Freight	Freight	Freight	Lark	C. M. E.	Del Monte	Adv. C. M. E.	Coast Daylight
Leave Daily	Leave Daily	Leave Daily	Leave Daily	Leave Daily Ex. Sunday	Leave Daily	Lv. Daily Ex. Fri. Sat. Sun.	Leave Daily
PM 10.55	PM 12.01	AM 5.20	PM 11.35	PM 10.32	PM 7.08	PM 6.40	AM 10.23
			AM 12.05		s 7.22 PM		
11.23	12.25	5.45	10.53			7.02	s 10.49
11.28	12.29	5.49	12.09	10.57		7.07	10.54
11.38	12.39	5.59	12.16	11.06		7.16	10.59
11.45	12.45	6.05	12.21	11.12		7.22	11.04
11.53	12.54	6.13	12.28	11.21		7.30	11.11
PM 11.59	12.59	6.18	12.32	11.26		7.35	11.15
AM 12.15	1.15	6.34	12.48	11.42		7.51	11.31
12.25	1.25	6.43	12.57	PM 11.51		8.00	11.39
12.36	1.35	6.54	1.06	AM 12.02		8.11	11.48
12.45	1.42	7.02	1.13	12.09		8.18	AM 11.55
12.53	1.50	7.14	1.21	12.17		8.26	PM 12.03
1.10	1.58	7.22	1.29	12.25		8.36	12.11
1.18	2.06	7.30	1.38	12.33		8.44	12.19
1.29	2.12	7.36	s 1.46	12.39			
1.37	2.19	7.45	1.52	12.47		8.56	12.31
1.46	2.27	7.55	2.00	12.54		9.03	12.37
1.55	2.39	8.05	2.09	1.05		9.13	12.49
2.55 AM	3.45 PM	9.05 AM	s 3.08 AM	2.05 AM		10.10 PM	s 1.30 PM
Arrive Daily	Arrive Daily	Arrive Daily	Arrive Daily	Arrive Daily Ex. Monday	Arrive Daily	Ar. Daily Ex. Fri. Sat. Sun.	Arrive Daily
<b>924</b>	<b>922</b>	<b>920</b>	<b>76</b>	<b>374</b>	<b>126</b>	<b>372</b>	<b>98</b>

**RULE 5.** Time at Salinas applies for first-class trains at No. 2 siding, for other westward trains at west end No. 1 siding, and for other eastward trains at east end No. 2 siding. Time at Soledad and McKay applies at No. 1 siding.

**RULE S-72.** Exception: No. 98 is superior to Nos. 373, 75, 99 and 371.



SALINAS SUBDIVISION

WESTWARD

FIRST CLASS

Mile Post Location	Stations Siding Capacities and Facilities	Station Number	Distance from San Luis Obispo	WESTWARD				
				373 C. M. W.	75 Lark	141 Del Monte	99 Coast Daylight	371 Adv. C.M.W.
				Arrive Daily	Arrive Daily	Arrive Daily	Arrive Daily	Ar. Daily Ex. Sat. Sun. Mon.
100.4	Yd. Lmts. TO-R WATSONVILLE JCT. BDKPTY PY	32350	151.7	AM 3.41	S 5.40	S 8.44	PM 4.55	AM 3.05
110.4	128 CASTROVILLE PY	32520	141.7			AM 8.33		
118.2	No. 1 135 No. 2 67 BDKP TO-R SALINAS PY	32720	133.9	3.17	S 5.19		S 4.36	2.41
120.3	89 SPRECKELS JCT. PY	32730	131.8	3.12	5.04		4.27	2.37
129.1	118 CHUALAR P	33009	123.0	3.04	4.57		4.20	2.29
135.1	115 Yd. Lmts. GONZALES P	33016	117.0	2.59	4.51		4.15	2.24
143.6	No. 1 152 No. 2 51 Yd. Lmts. SOLEDAD P	33030	108.5	2.51	4.43		4.08	2.16
148.3	98 HARLEM P	33037	103.8	2.46	4.38		4.04	2.11
163.7	108 Yd. Lmts. TO KING CITY KP	33060	88.4	2.30	4.22		3.49	1.56
172.4	101 SAN LUCAS P	33111	79.7	2.20	4.12		3.41	1.47
182.9	118 SAN ARDO P	33123	69.2	2.09	4.04		3.33	1.36
189.7	96 WUNPOST P	33131	62.4	2.01	3.56		3.27	1.28
195.9	105 BRADLEY P	33138	56.2	1.53	3.48		3.20	1.21
203.8	No. 1 102 No. 2 77 McKAY P	33147	48.3	1.46	3.41		3.13	1.10
207.0	33 SAN MIGUEL P	33151	45.1		3.38			
210.9	97 WELLSONA P	33156	41.2	1.38	3.34		3.06	1.01
216.3	54 TO PASO ROBLES KP	33170	35.8	1.29	S 3.29			12.55
221.8	96 TEMPLETON P	33210	30.3	1.22	3.22		2.55	12.47
228.0	114 HENRY P	33219	24.1	1.15	3.15		2.48	12.40
235.5	364 Yd. Lmts. SANTA MARGARITA P	33232	16.6	1.05	3.04		2.39	AM 12.30
238.9	119 CUESTA P	33237	13.2					
243.4	171 SERRANO P	33242	8.7					
246.3	104 CHORRO P	33247	5.8					
248.0	36 GOLDTREE PY	33253	4.1					
250.6	99 HATHAWAY P	33260	1.5					
252.1	BDKPTY TO-R SAN LUIS OBISPO (151.7)	34000	0.0	12.10 AM	2.25 AM		1.56 PM	11.30 PM
				Leave Daily	Leave Daily	Leave Daily	Leave Daily	Lv. Daily Ex. Fri. Sat. Sun.
				373	75	141	99	371

**RULE 5.** Time at Salinas applies for first-class trains at No. 2 siding, for other westward trains at west end No. 1 siding, and for other eastward trains at east end No. 2 siding.

Time at Soledad and McKay applies at No. 1 siding.

**RULE S-72.** Exception: No. 98 is superior to Nos. 373, 75, 99 and 371.

ADDITIONAL STATIONS			
Capacity and Direction of entry into Spurs	Mile Post	NAME	Station Number
77 P	107.7	Moss Landing	32513
108 P	113.9	Cooper	32710
20 P	125.3	Spence	33005
26E P	138.8	Molus (Spur)	33021
39 P	140.6	Camphora	33024
39 P	152.3	Metz	33043
85E P	161.0	Elsa (Spur)	33055
36 P	167.1	Welby	33105
58E P	226.5	Atascadero (Spurs)	33215
10W ..	226.8		

SAN FRANCISCO SUBDIVISION

EAST-WARD		Station Number	WEST-WARD	
Mile Post Location			Distance from San Jose	
Vasona Branch				
<b>STATIONS</b>				
SIDING CAPACITIES AND FACILITIES				
46.9	Yd. Lmts. { TO-R 41 12 (Spur) 17	TO-R <b>SAN JOSE</b> BDIKPTY	32020	0.0
50.7		<b>CAMPBELL</b> P	32040	3.8
48.2 52.9		<b>VASONA</b> P	32045	6.0
45.2		<b>CHAMPAGNE FOUNTAIN</b>	32050	9.0
43.8		<b>BLUE HILLS</b>	32055	10.4
41.0		<b>MONTA VISTA</b>	32060	13.2
37.3		<b>PERMANENTE</b>	32070	16.9
(16.9)				

EAST-WARD		Station Number	WEST-WARD	
Mile Post Location			Distance from Olympia	
Santa Cruz Branch				
<b>STATIONS</b>				
SIDING CAPACITIES AND FACILITIES				
100.4 100.5	Yd. Lmts. { TO-R 32 9	TO-R <b>WATSONVILLE JCT.</b> BDKPTY	32350	28.9
102.0		<b>WATSONVILLE</b>	32400	27.4
120.6		TO-R <b>SANTA CRUZ</b> BKPY	32450	8.8
127.4		<b>FELTON</b> P	32480	2.0
129.4	<b>OLYMPIA</b>	32490	0.0	
(28.9)				

EAST-WARD		Station Number	WEST-WARD	
Mile Post Location			Distance from Davenport	
Davenport Branch				
<b>STATIONS</b>				
SIDING CAPACITIES AND FACILITIES				
120.6 79.2	Yd. Lmts. { TO-R	<b>SANTA CRUZ</b> BKYP	32450	11.5
90.7		<b>DAVENPORT</b>	32460	0.0
(11.5)				

EAST-WARD		Station Number	WEST-WARD	
Mile Post Location			Distance from So. San Francisco	
San Bruno Branch				
<b>STATIONS</b>				
SIDING CAPACITIES AND FACILITIES				
9.3 14.1	Yd. Lmts. { 8.5 7.4	<b>SO. SAN FRANCISCO</b>	31075	0.0
		<b>COLMA</b>	31120	5.6
		<b>DALY CITY</b>	31125	6.7
(6.7)				

EAST-WARD		Station Number	WEST-WARD	
Mile Post Location			Distance from Alhambra	
Lick Branch				
<b>STATIONS</b>				
SIDING CAPACITIES AND FACILITIES				
51.4 55.3	Yd. Lmts. { 12 (Spur)	<b>LICK</b> IP	32115	3.6
58.9		<b>ALAMITOS</b>	32120	0.0
(3.6)				

EAST-WARD		Station Number	WEST-WARD	
Mile Post Location			Distance from Hollister	
Hollister Branch				
<b>STATIONS</b>				
SIDING CAPACITIES AND FACILITIES				
83.2		<b>CARNADERO</b> P	32180	11.7
94.9	12	<b>HOLLISTER</b> P	32220	0.0
(11.7)				

ADDITIONAL STATIONS				
Capacity and Direction of entry into Spurs	Mile Post	NAME	Station Number	
.. W	P	6.9 Brisbane .....	31065	
.. W	..	16.8 Howest .....	31214	(Spur)
.. W	..	19.7 Romac .....	31225	(Spur)
.. E	..	27.3 Stauffer .....	31243	(On Spur)
.. E	..	1.1 mile from Redwood Jct.)		
.. E	..	28.7 Redwood Harbor .....	31247	(On Spur)
.. E	P	2.5 miles from Redwood Jct.)		
.. E	P	49.3 Luther Jct. ....	32105	(Spur)
..	..	Luther (on spur 1.7 mile		
..	..	from Luther Jct.) .....	32110	
16E	P	51.0 Oak Grove .....	32135	(Spur)
32	P	59.0 Morganhill .....	32150	
35	P	70.8 San Martin .....	32155	
89E	P	74.6 Sargent .....	32320	(Spur)
10W	P	87.1 Eaton .....	32340	(Spur)
..	..	97.1 .....		
..	..	13.0 Tanforan .....	31105	
..	..	11.4 Baden .....	31110	
1E	..	10.0 Carroll .....	31115	(Spur)
..	..	<b>San Bruno Branch</b>		
4W	P	112.8 Aptos .....	32415	(Spur)
7E	P	115.9 Capitola .....	32420	(Spur)
7	..	118.1 Cliffside .....	32430	
5W	..	119.4 Seabright .....	32435	(Spur)
..	..	120.1 Casino .....	32440	
15	..	121.8 Eblis .....	32470	
..	..	<b>Hollister Branch</b>		
21	..	86.0 Bolsa .....	32205	

NILES SUBDIVISION

EASTWARD			WESTWARD		
FIRST CLASS			FIRST CLASS		
Mile Post Location	Station Number	Distance from West Oakland	Mile Post Location	Station Number	Distance from West Oakland
336 Oakland C. M. E.			335 Oakland C. M. W.		
Leave Daily Ex. Sat. Sun.			Ar. Daily Ex. Sun. & Mon.		
PM 7.10	4.9		AM 7.40		
	5.9				
	9.7				
7.26	13.4		6.50		
7.30	15.5		6.46		
7.35	20.2		6.41		
7.42	25.3		6.35		
7.50	30.6		6.28		
7.55	34.1		6.24		
	39.1				
8.05	41.7		6.15		
8.20 PM	44.8		6.10 AM		
Arrive Daily Ex. Sat. Sun.			Lv. Daily Ex. Sun. & Mon.		
336			335		

STATIONS		STATIONS	
SIDING CAPACITIES AND FACILITIES		SIDING CAPACITIES AND FACILITIES	
Yard Limits	Double Track	Yard Limits	Double Track
TO-R WEST OAKLAND	BKDIYP	TO-R WEST OAKLAND	BKDIYP
MAGNOLIA TOWER	IP	MAGNOLIA TOWER	IP
TO FRUITVALE	YIP	TO FRUITVALE	YIP
ELMHURST	BKP	ELMHURST	BKP
Yd. Lmts. TO MULFORD	BKP	Yd. Lmts. TO MULFORD	BKP
70	P	70	P
RUSSELL	P	RUSSELL	P
66 Yd. Lmts. TO ALVARADO	P	66 Yd. Lmts. TO ALVARADO	P
TO		TO	
100 TO-R NEWARK	IYP	100 TO-R NEWARK	IYP
80	P	80	P
ALBRAE	P	ALBRAE	P
ALVISO	P	ALVISO	P
30612		30612	
53	P	53	P
AGNEW	P	AGNEW	P
30620		30620	
Yd. Lmts. TO-R SANTA CLARA	KIP	Yd. Lmts. TO-R SANTA CLARA	KIP
(39.9)		(39.9)	

ADDITIONAL STATIONS	
Capacity and Direction of entry into Spurs	NAME
.. P	Santa Clara line
.. P	East Oakland
21 P	Robert
50 P	Mt. Eden
.. P	Baumberg
.. P	Drawbridge
130 W	Tracy line
15 W	Henderson
16 E	Ravenswood (Spur)
7 E	Dresser (Spur)
.. P	Trevarno (Spur)
.. P	Midway (Spur)
.. P	Niles line
.. P	Estudillo
20 P	Milpitas line
7 E	Irvington
.. P	Snoboy
.. P	Wayne (Spur)
.. P	North San Jose
.. P	Maybury

**RULE 5.** Newark. Time on Elmhurst-Santa Clara line applies at siding east of station building.

Santa Clara-Newark line time will apply at junction switch, Santa Clara.

EAST WARD	STATIONS	Station Number	WESTWARD
Mile Post Location	SIDING CAPACITIES AND FACILITIES		Distance from Tracy
26.2	Yd. Lmts. TO-R REDWOOD JCT. KIYP	31250	58.7
28.6	BELLE HAVEN P	30505	56.3
32.5	TO S. F. BAY DRAWBRIDGE IP	30520	52.4
37.2	100 TO-R NEWARK IYP	30530	47.7
40.1	51 CENTERVILLE P	30535	44.8
41.7	80 SHINN P	30540	43.2
42.4	TO-R NILES TOWER IYP	30550	42.5
43.0	NILES JCT.	30555	41.9
29.6	91 SUNOL P	25114	35.9
35.6	PLEASANTON P	25121	30.6
40.9	RADUM IYP	25124	29.5
42.0	100 TO EAST PLEASANTON P	25126	28.5
43.0	88 Yd. Lmts. TO-R LIVERMORE BKP	25130	24.6
46.9	88 Yd. Lmts. ALTAMONT P	25142	16.5
55.0	Yd. Lmts. TO-R TRACY BKDYP	25300	0.0
71.5	(58.7)		

EASTWARD	STATIONS	Station Number	WESTWARD
Mile Post Location	SIDING CAPACITIES AND FACILITIES		Distance
13.4	ELMHURST BKP	30260	16.2
14.8	SAN LEANDRO P	30403	14.8
17.5	SAN LORENZO	30409	12.1
20.1	100 TO HAYWARD BKP	30414	9.5
26.5	32 DECOTO P	30425	3.1
29.2	70 TO-R NILES BKYP	30555	0.4
29.6	NILES JCT.	30555	0.0
43.0	(16.2)		
29.2	TO-R NILES BKYP	30555	18.5
29.8	TO-R NILES TOWER IYP	30550	17.9
36.3	82 WARM SPRINGS P	30720	11.4
40.7	118 TO MILPITAS P	30727	7.0
47.7	Yd. Lmts. SAN JOSE YARD BKDIYP	32010	0.0
45.2	(18.5)		
Stonehurst Branch			
13.4	ELMHURST BKP	30260	0.9
14.3	STONEHURST	30270	0.0
(0.9)			

**RULE 5.** Tracy. Time for trains other than First Class to and from Niles and Martinez Subdivisions, applies at Crossover MP 72 on Stockton Subdivision.

Belle Haven. Time applies at end of double track.

San Jose Yard. Time applies at Junction switch for Milpitas Line.

Niles. Time for westward trains via Decoto applies at Junction switch located 550 feet west of station building.

# WESTERN DIVISION TIMETABLE No. 9, OCTOBER 1, 1967

12

## MARTINEZ SUBDIVISION

### EASTWARD

#### FIRST CLASS

					378	22	12	102	52	Mile Post Location	Station Number	Distance from Sacramento
					Pacific Coast Expediter	Mail	Cascade	City of San Francisco	San Joaquin Daylight			
					Leave Daily	Leave Daily	Leave Daily	Leave Daily	Leave Daily			
					PM 10.15		PM 3.10	PM 2.15	AM 7.35			
										4.4		
					PM 10.45	10.30	3.25	2.25	7.45	4.9		
					10.55	s 10.45	s 3.50	s 2.50	s 8.05	5.5		
										7.0		
						10.55	s 4.00	s 3.00	s 8.14	9.2		
					11.10	11.05	s 4.09	s 3.12	s 8.23	15.0		
					11.19	11.14	4.18	3.21	8.32	23.0		
					11.29	11.24	s 4.29	s 3.33	s 8.41	28.9		
										29.0		
					11.40	8:40 11.35	s 4.50	s 3.47	s 8.50 AM	33.1		
										34.7		
										31.7		
					11.50	11.45	5.04	3.54		38.0		
					PM 11.59	PM 11.55	s 5.18	s 4.08		48.9		
					AM 12.10	AM 12.05	5.28	4.18		59.4		
					12.20	12.15	5.37	4.28		67.5		
					12.35	12.24	s 5.50 PM	4.35		75.6		
					12.45	12.30	9:40	4.40		80.4		
					AM 12.55	s AM 12.45		s 5.00 PM		89.0		
					Arrive Daily	Arrive Daily	Arrive Daily	Arrive Daily	Arrive Daily			
					<b>378</b>	<b>22</b>	<b>12</b>	<b>102</b>	<b>52</b>			

**RULE 5.** Suisun-Fairfield. Time applies for trains enroute to Schellville Branch, at east switch of north siding.

### STATIONS SIDING CAPACITIES AND FACILITIES

SAN FRANCISCO		31000	
<b>BAYS</b>			
	BKDIYP		87.0
TO-R	<b>WEST OAKLAND</b>	30147	87.1
	KIP		
OAKLAND (16th Street)	P	30145	86.5
SHELLMOUND	P	30139	85.0
BERKELEY	P	30128	82.8
RICHMOND	P	30100	77.0
E-105 W-95	P	30035	69.0
PINOLE	P	30015	63.1
CROCKETT	BKDP	30015	63.1
M-116	BKDP	30002	59.0
OZOL	IP	23820	57.4
TO	P	23813	51.0
E-132 M W-115	BKDYP	23513	40.1
BAHIA	P	23345	29.6
45 Yd. Lmts. TO-R	BKDYP	23345	29.6
SUISUN-FAIRFIELD	P	23335	21.5
Yd. Lmts. ELMIRA	P	23323	13.4
M-74	P	23312	8.6
DIXON	KIYP	23050	0.0
E-80 W-125 Yd. Lmts. TO-R	N-83	P	
DAVIS	P	23312	8.6
WEBSTER	BKDTIP	23050	0.0
Yd. Lmts. TO-R	P		
SACRAMENTO	P		
(87.0)			

### EASTWARD

#### FIRST CLASS

52		Mile Post Location	STATIONS		Station Number	Distance from Tracy		
San Joaquin Daylight			SIDING CAPACITIES AND FACILITIES					
Leave Daily								
AM 8.55	34.7	ATS	TO	MARTINEZ	IP	23820	48.2	
8.58	36.0		TO-R	MOCOCO	YD	25005	46.9	
9.02	38.1		Yd. Lmts. TO-R	AVON	YP	25010	44.8	
9.05	41.3		82	PORT CHICAGO	BKYP	25200	41.6	
s 9.13	48.9		96 Yd. Lmts. TO-R	PITTSBURG	P	25250	34.0	
9.15	50.8		48	LOS MEDANOS	YP	25273	32.1	
9.24	61.7		ABS	52 Yd. Lmts. TO	BRENTWOOD	P	25287	21.2
9.29	66.9			82	BYRON	P	25291	16.0
s 9.43 AM	82.9 71.5			Yd. Lmts. TO-R	TRACY	BKDYP	25300	0.0
Arrive Daily				(48.2)				
<b>52</b>								

### WESTWARD

#### FIRST CLASS

51	
San Joaquin Daylight	
Arrive Daily	
PM 4.14	
4.08	
4.05	
s 3.59	
3.53	
3.44	
3.40	
3.26 PM	
Leave Daily	
<b>51</b>	

### ADDITIONAL STATIONS

Capacity and Direction of entry into Spurs	Mile Post	NAME	Station Number
<b>Sacramento Line</b>			
..	3.5	Oakland Pier.....	30147
..	6.6	Emeryville.....	30142
..	7.4	Pabco.....	30135
..	7.8	Stockyards.....	30131
..	13.1	Steger.....	30122
..	16.6	San Pablo.....	30045
19 W	18.9	Giant..... (Spur)	30043
..	23.8	Hercules.....	30031
..	25.5	Rodeo..... (Spur)	30027
22 E	26.3	Oleum..... (Spur)	30025
95 E	27.1	Tormey..... (Spur)	30021
61 W	27.5	Selby..... (Spur)	30017
..	33.8	Army Point..... (on spur)	23819
..	32.4	Benicia..... (on spur)	23819
..	51.9	Tolenas.....	23509
..	55.4	Cannon.....	23505
43 E	69.6	Sucro..... (Spur)	23331
7 E	71.8	Tremont..... (Spur)	23328
18 W	79.1	Swingle..... (Spur)	23315
..	86.3	Mikon.....	23305
..	88.1	West Sacramento.....	23095
<b>Tracy Line</b>			
42 W	P	Nichols..... (Spur)	25225
..	P	McAvoy.....	25230
48	P	Shell Point.....	25240
..	P	Antioch.....	25277
.. Yd. Lmts. P	79.1	Janney.....	25298

**RULE 5.** Tracy. Time for trains other than First Class to and from Niles and Martinez Subdivisions, applies at crossover MP 72 on Stockton Subdivision. Mococo. Time applies at end of double track.

MARTINEZ SUBDIVISION

WESTWARD

FIRST CLASS

21 Mail	377 Pacific Coast Expediter	11 Cascade	101 City of San Francisco	51 San Joaquin Daylight					
Arrive Daily	Arrive Daily	Arrive Daily	Arrive Daily	Arrive Daily					
AM 3.20		AM 9.55	PM 1.50	PM 5.45					
		9.35							
3.00	AM 5.05		1.40	5.30					
s 2.50	4.45	s 9.20	s 1.20	s 5.15					
		905							
2.26	4.35	s 8.58	s 12.59	s 5.06					
2.18	4.25	s 8.38	s 12.40	s 4.55					
2.06	4.15	8.23	12.23	4.43					
1.55	4.05	f 8.16	s 12.15	s 4.34					
		752							
1.45	3.55	s 8.07	s 12.05 PM	4.24 PM					
1.35	3.45	7.42	11.49 AM						
1.25	3.35	s 7.32	s 11.39						
1.15	3.20	7.19	11.15						
	3.05								
1.00	2.50 AM	7.05 AM	11.01						
		650							
12.55 12.45 AM			10.55 10.45 AM						
Leave Daily	Leave Daily	Leave Daily	Leave Daily	Leave Daily					
21	377	11	101	51					

**RULE 5.** Suisun-Fairfield. Time applies for trains enroute to Schellville Branch at east switch of north siding.

ADDITIONAL STATIONS

Capacity and Direction of entry into Spurs	Mile Post	NAME	Station Number
		<b>Schellville Branch</b>	
39	P 54.2	Cordelia	23522
		<b>Calistoga Branch</b>	
35	66.8	Rocktram	23607
6E	74.2	Oak Knoll	23617
	78.0	Yountville (Spur)	23622
	81.5	Oakville	23627
	83.4	Rutherford	23629
9E	86.1	Thomann (Spur)	23632
15	87.6	St. Helena	23635
6	88.5	Krug	23637
		<b>Winters Branch</b>	
5E	63.7	Vacaville	23405
	67.5	Vaca Valley	23412
13	80.3	Norton	23424
7E	83.6	Citrona (Spur)	23431
31W	86.8	Madison (Spur)	23436
		<b>San Ramon Branch</b>	
26	P 41.0	Galindo	25020
17	42.5	Concord	25030
7	45.1	Hookston	25034
19	P 45.8	Las Juntas	25037
	48.2	Walnut Creek	25041
	52.6	Alamo	25047
	54.8	Danville	25051
	66.4	Asco	25070

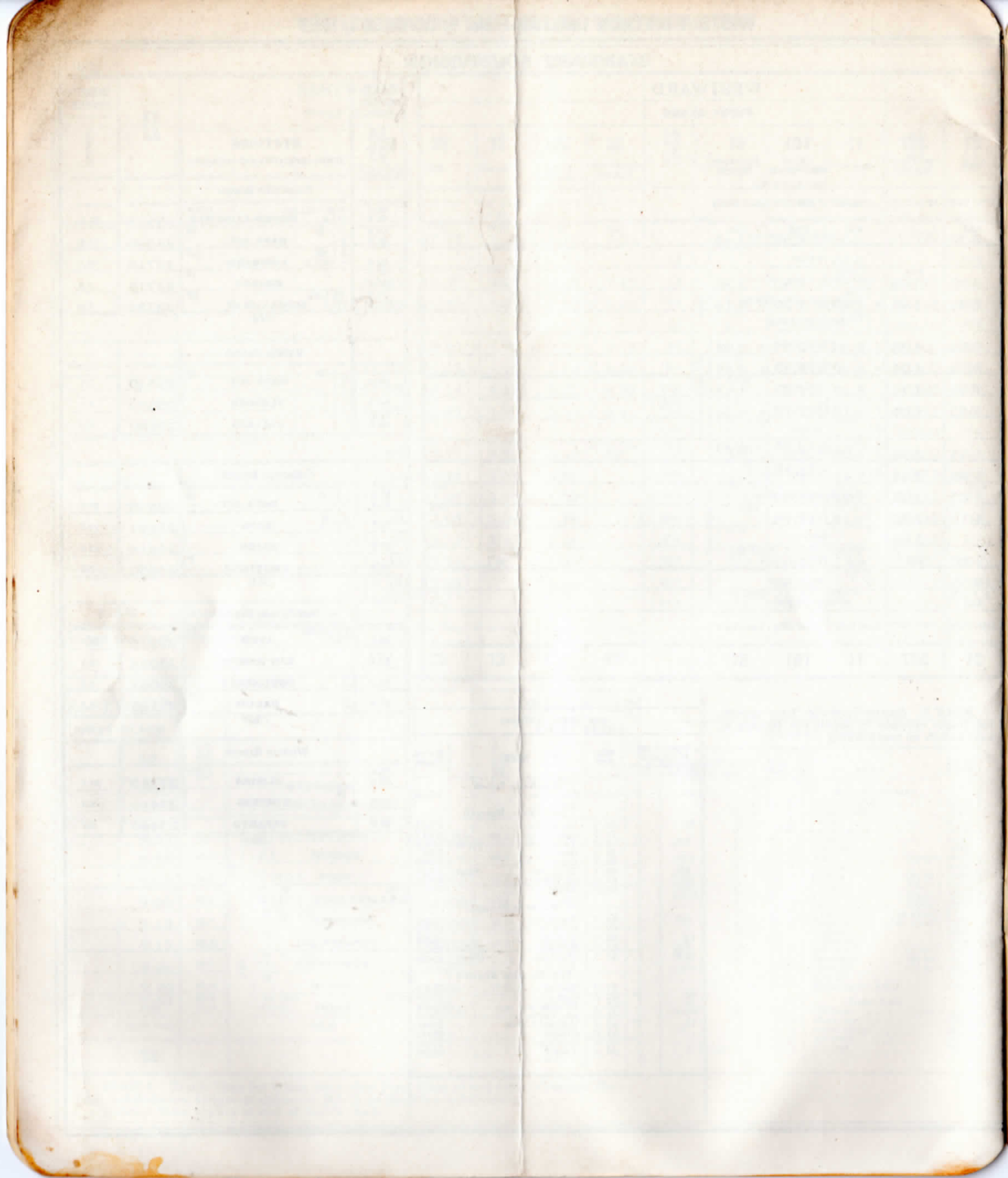
EAST- WARD Mile Post Location	STATIONS		Station Number	WEST- WARD Distance
	SIDING CAPACITIES AND FACILITIES			
	<b>Schellville Branch</b>			
48.9 48.5	N-92 Yd. Lmts. TO-R	BKDYP <b>SUISUN-FAIRFIELD</b>	23513	24.8
61.8 61.0	35 Yd. Lmts. TO-R	YP <b>NAPA JCT.</b>	23540	11.5
62.0	99 Yd. Lmts. TO-R	KP <b>LOMBARD</b>	23710	10.5
64.7		IP <b>BRAZOS</b>	23715	7.8
72.5 72.8	Yd. Lmts. TO-R	KY <b>SCHELLVILLE</b>	23730	0.0
	(24.8)			

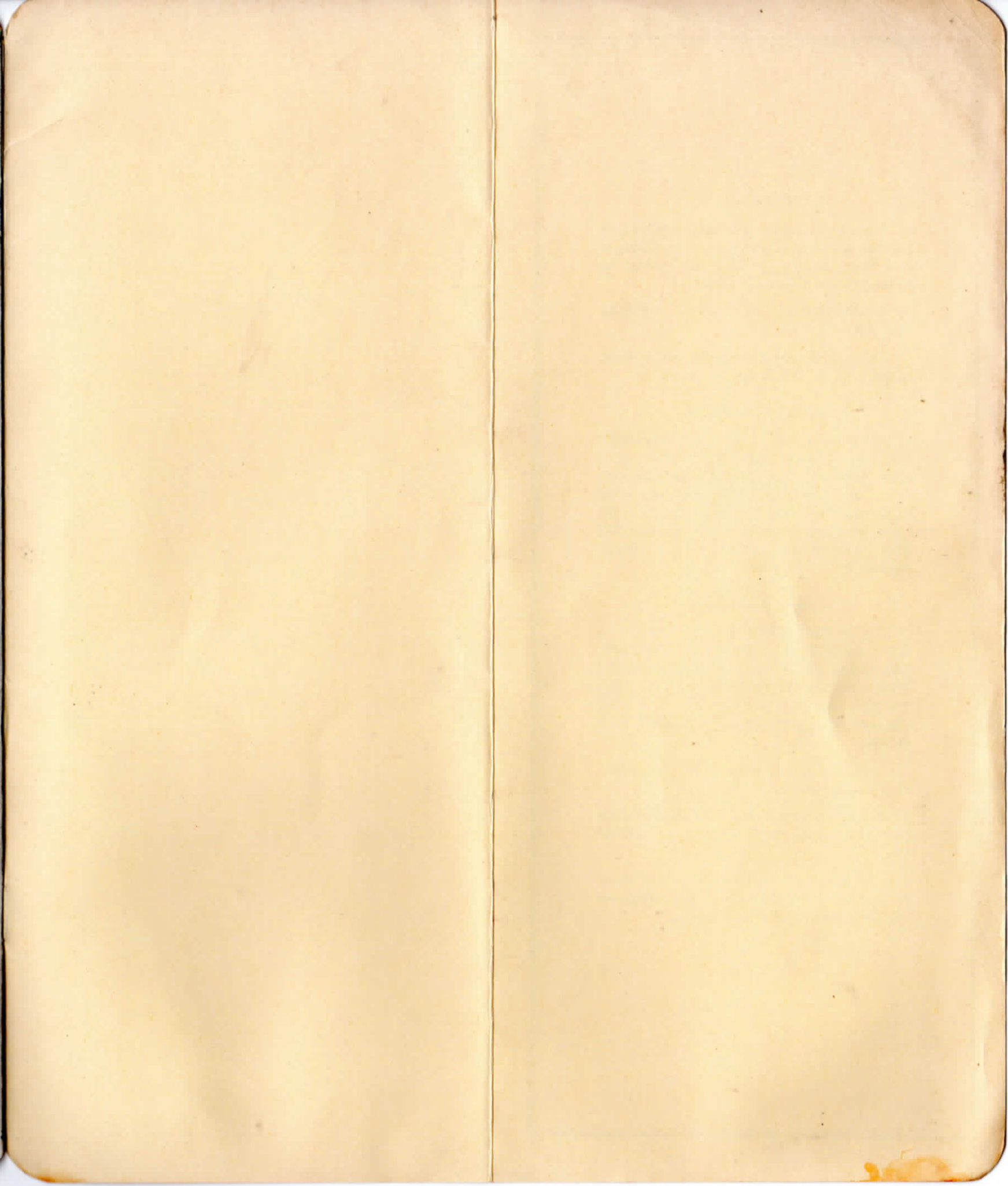
Vallejo Branch			
61.8	35 Yd. Lmts. TO-R	YP <b>NAPA JCT.</b>	23540
64.6	21 Yd. Lmts. TO-R	<b>FLOSDEN</b>	23660
68.9 68.8		<b>VALLEJO</b>	23680
	(7.1)		

Calistoga Branch			
61.8 61.2	35 Yd. Lmts. TO-R	YP <b>NAPA JCT.</b>	23540
69.5	50 Yd. Lmts. R	<b>NAPA</b>	23611
71.8		<b>UNION</b>	23614
95.7		T <b>CALISTOGA</b>	23650
	(34.5)		

San Ramon Branch			
38.1	Yard Limits TO-R	YP <b>AVON</b>	25010
57.7		<b>SAN RAMON</b>	25054
63.6	Yd. Lmts. TO-R	IYP <b>DOUGHERTY</b>	25061
67.8		<b>RADUM</b>	25124
	(29.7)		

Winters Branch			
59.4 59.6		YP <b>ELMIRA</b>	23345
76.0	20 Yd. Lmts. TO-R	<b>WINTERS</b>	23419
89.9		<b>ESPARTO</b>	23440
	(30.3)		





### RULE 10-I

Oral authorization and acknowledgments between Foremen and Engineers for trains to pass "Red Conditional Stop" signs must be worded in the following forms:

SP FOREMAN . . . . AT MP . . . . CALL-  
ING SP (Train No.) . . . .

(After train answers giving his identification): (i. e.) SP Train . . . .

#### Foreman's Response

"THIS IS SP FOREMAN . . . IN CHARGE  
OF THE WORK BETWEEN MP . . . .  
AND MP . . . . SP TRAIN ORDER NO.  
. . . . WE ARE IN THE CLEAR AND  
YOU MAY PROCEED PAST THE RED  
CONDITIONAL SIGN AND THROUGH  
THE LIMITS OF ORDER AT . . . MPH,  
REPEAT . . . . MPH"\*

#### Engineer's Response

"THIS IS ENGINEER SP TRAIN . . . . I  
MAY PROCEED PAST THE RED CON-  
DITIONAL STOP SIGN AND THROUGH  
THE LIMITS OF ORDER NO. . . . BE-  
TWEEN MP . . . . AND MP . . . . AT  
(Speed). REPEAT (Speed) MILES PER  
HOUR."

Foreman must acknowledge Engineer's response as follows:

SP TRAIN ORDER NO. . . . , BETWEEN  
MP . . . . AND MP . . . . . MPH\*  
OK."

\*When no speed restriction account above Form "Y" Train Order, tell train engineer "At Maximum Authorized Speed."