

STAGE AND BOAT CONNECTIONS

To points in Oregon and Washington reached from stations on the Spokane, Portland and Seattle Ry. east of Portland and on Oregon Trunk Ry.

Destination	From	Conveyance	Days	Time	Free Bge.lbs.
Oregon:					
*Arlington	Roosevelt	Ferry	Daily	9 A.M. to 9 P.M.	Hand
Ashwood	Madras	Stage	Ex. Sun.	8:00 AM	Hand
Burns	Bend	Stage	Daily	8:00 PM	100
Chiloquin	Bend	Stage	Daily	2:20 PM	100
Crescent	Bend	Stage	Daily	2:20 PM	100
Criterion	Maupin	Stage	Daily	7:20 PM	100
Ft. Klamath	Bend	Stage	Daily	10:55 AM	100
Fort Rook	Bend	Stage	Daily	4:10 PM	100
Grizzly	Madras	Stage	Ex. Sun.	2:20 PM	100
Hay Creek	Madras	Stage	Ex. Sun.	8:45 AM	100
Klamath Falls	Bend	Stage	Daily	8:00 AM	100
Lakeview	Bend	Stage	Ex. Sun.	2:20 PM	100
La Pine	Bend	Stage	Daily	8:45 AM	100
Millican	Bend	Stage	Ex. Sun.	8:45 AM	100
Mitchell	Redmond	Stage	Daily	8:00 PM	100
Paisley	Bend	Stage	Ex. Sun.	2:05 PM	100
Prineville	Redmond	Stage	Daily	8:45 AM	100
Riley	Bend	Stage	Ex. Sun.	11:35 AM	100
Silver Lake	Bend	Stage	Ex. Sun.	2:05 PM	100
Summer Lake	Bend	Stage	Ex. Sun.	7:05 PM	100
*The Dalles	Northdalles	Ferry	Continuous Service	8:45 AM	100
Tygh Valley	Maupin	Stage	Daily	8:45 AM	100
Wapinitia Jct.	Maupin	Stage	Daily	4:50 PM	100
Warm Springs	Madras	Stage	Ex. Sun.	4:55 PM	100
Washington:					
Amboy	Vancouver	Stage	Ex. Sun.	7:30 AM	Hand
			Sun.	4:30 PM	
			Sun.	10:00 AM	
			Sun.	7:00 PM	
Appleton	Lyle	Stage	Ex. Sun.	7:00 AM	Hand
Battle Ground	Vancouver	Stage	Daily	Frequent	Hand
Bickleton	Roosevelt	Stage	Daily	Meets 3 & 4	Hand
Brush Prairie	Vancouver	Stage	Daily	Frequent	Hand
Cheney	So. Cheney	Passengers	make own arrangement		Hand
Gilmer	Bing-Wh Sal	Stage	Ex. Sun.	12:30 PM	Hand
Glenwood	Bing-Wh Sal	Stage	Ex. Sun.	1:00 PM	Hand
Goldendale	Maryhill	Stage meets	No. 4 Daily		Hand
		Nos. 1 & 3 Daily	ily ex. Sun.		Trunks
					50c
Guler	Bing-Wh Sal	Stage	Ex. Sun.	12:30 PM	Hand
Hanford	Kennewick	Stage	Frequent		Hand
Hartland	Lyle	Stage	Tu, Th, Sat	1:30 PM	Hand
Husum	Bing-Wh Sal	Stage	Ex. Sun.	12:30 PM	Hand
LaCenter	Vancouver	Stage	Daily	See Note 1	Hand
Laurel	Bing-Wh Sal	Stage	Ex. Sun.	12:30 PM	Hand
Liberty Bond	Lyle	Stage	Ex. Sun.	7:00 AM	Hand
Longview	Rainier	Stage	Daily	8:20 AM	50
				2:20 PM	
				10:20 AM	
				12:20 PM	
				6:20 PM	
				7:40 PM	
Orchards	Vancouver	Stage	Daily	Frequent	Hand
Richland	Kennewick	Stage	Daily	Frequent	Hand
St. Martin's Springs	Carson	Auto	Daily	Trains 3 & 4	Hand
Snowdon	Bing-Wh Sal	Stage	Ex. Sun.	8:00 AM	Hand
Trout Lake	Bing-Wh Sal	Stage	Ex. Sun.	12:30 PM	Hand
White Bluffs	Kennewick	Stage	Frequent		Hand
Yacolt	Vancouver	Stage	Ex. Sun.	7:30 AM	Hand
			Sun.	4:30 PM	
			Sun.	10:00 AM	
			Sun.	7:00 PM	

Note 1—hourly 7:36 A.M. to 6:36 P.M., incl., 9:36 P.M., 12:36 A.M.

- ① Phone Main 1271 Cheney for special service.
- * Suspends only in case of heavy ice in river.
- ‡ 7:30 A.M. to 7:15 P.M.

The information shown above is prepared from the best data obtainable, but it is subject to change without notice and neither service nor rates are guaranteed.

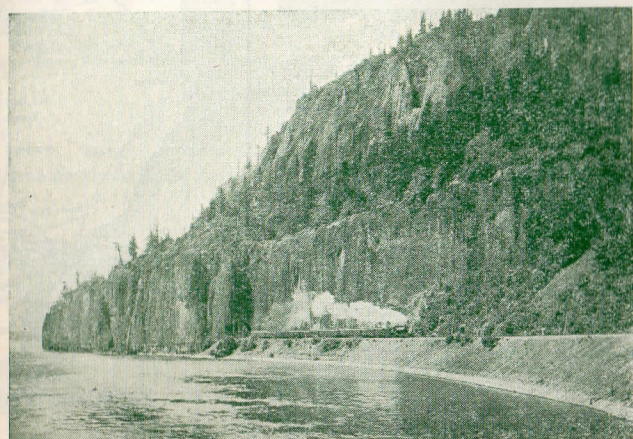
FEBRUARY 1, 1945

SUBJECT TO CHANGE WITHOUT NOTICE



Spokane, Portland & Seattle Ry.
Oregon Trunk Ry.

TIME TABLES



Cape Horn, Columbia River, S. P. & S. Ry.

SPOKANE, PORTLAND AND SEATTLE RAILWAY SYSTEM



TRANSCONTINENTAL TRAIN SERVICE—BETWEEN PORTLAND, SPOKANE AND THE EAST

VIA NORTHERN PACIFIC RY.						VIA GREAT NORTHERN RY.											
Eastbound, Read Down			Westbound, Read Up			Eastbound, Read Down			Westbound, Read Up								
Daily No. 4	Daily No. 2	One Day Example	Miles	Spokane, Portland and Seattle Railway	Daily No. 1	Daily No. 1	Daily No. 3	Daily No. 4	Daily No. 2	One Day Example	Miles	Spokane, Portland and Seattle Railway	Daily No. 1	Daily No. 1	Daily No. 3		
9:00	8:00	Su.	0	Lv. Portland, Union Station.. Ar.	7:35	7:35	5:08	9:00	8:00	8:00	Su.	0	Lv. Portland, Union Station.. Ar.	7:35	7:35	5:08	
9:35	8:30	Su.	10	Lv. Vancouver .. Ar.	7:05	7:05	4:35	9:35	8:30	8:30	Su.	10	Lv. Vancouver .. Ar.	7:05	7:05	4:35	
12:33	11:05	Su.	106	Lv. Wishram .. Ar.	4:25	4:25	1:45	12:33	11:05	11:05	Mo.	106	Lv. Wishram .. Ar.	4:25	4:25	1:45	
3:45	1:50	Mo.	231	Ar. Pasco .. Lv.	1:50	1:50	10:46	3:45	1:50	1:50	Mo.	231	Ar. Pasco .. Lv.	1:50	1:50	10:46	
Northern Pacific Ry.						No. 1	No. 3	Great Northern Ry.						No. 1	No. 27		
						4:35	3:59	Mo.	238	Lv. Pasco .. Ar.	12:38	10:30	10:42				
						8:20	7:10	Mo.	378	Ar. Spokane (N. P. Station) .. Lv.	9:18	6:35	7:00				
						No. 4 No. 2									No. 1 No. 3		
						9:25	7:35	Mo.	378	Lv. Spokane (N. P. Station) .. Ar.	8:53	6:15					
						10:50	8:28	"	418	Ar. Athol (Farragut Naval Training Sta.) Lv.	7:58	5:22					
						11:45	9:13	"	446	" Sand Point .. Lv.	7:15	4:17					
						7:00	3:19	"	687	" Missoula .. Lv.	5:04	11:10					
						11:25	6:40	"	759	" Helena .. Lv.	11:15	7:05					
						11:10	6:16	"	761	" Butte .. Lv.	12:05	7:40					
						2:55	9:55	"	857	" Bozeman .. Lv.	8:35	3:53					
						4:05	10:59	"	883	" Livingston .. Lv.	7:33	2:55					
						*10:25	*10:25	Tu.	937	Ar. Gardiner (Yel. Nat'l Pk.) .. Lv.	*11:30	*11:30					
						7:05	1:29	Tu.	998	Ar. Billings .. Lv.	4:41	11:45					
						11:02	4:53	"	1137	" Miles City .. Lv.	1:07	7:35					
						1:15	6:34	"	1216	" Glendive .. Lv.	11:25	5:27					
						12:01	9:04	"	1330	" Dickinson .. Lv.	8:54	2:35					
						5:15	12:50	"	1445	" Bismarck .. Lv.	7:02	11:53					
						8:10	2:45	"	1539	" Jamestown .. Lv.	4:43	8:58					
						11:15	4:56	"	1630	" Fargo .. Lv.	2:25	6:01					
						7:44	11:19	Tu.	1886	Ar. Superior .. Lv.	7:35	8:12					
						8:00	11:35	"	1890	" Duluth .. Lv.	7:20	8:00					
						7:10	10:12	Tu.	1890	Ar. Minneapolis (Hennepin Ave. Sta.) Lv.	9:10	11:05					
						7:45	10:45	"	1890	Ar. St. Paul (Union Station) .. Lv.	8:35	10:15					
						Zephr No. 24			Zephr No. 22			Zephr No. 21					
						4:30	8:25	No. 50	1890	Burlington Route			No. 51	Zephr No. 23	Zephr No. 21		
						11:00	2:55	Tu.	2321	Lv. St. Paul (Union Station) .. Ar.	8:00	10:30	3:15				
												10:45	4:00	9:00			
												Burlington Route					
												No. 43					
												7:10 Tu. 998 Lv. Billings .. Ar. 10:55					
												8:00 We. 1839 Ar. Lincoln .. Lv. 11:59					
												9:50 We. 1894 Ar. Omaha .. Lv. 9:30					
												6:15 " 2049 " Kansas City .. " 6:00					

x Bus. z Motor. e Connects with No. 3 at Minneapolis.
* Daily except Sunday by bus.

EQUIPMENT

EASTBOUND

No. 2. North Coast Limited—AIR CONDITIONED—(S.P. & S.-N.P.-C.B. & Q.)
3 compartment, 1 drawing room, buffet-lounge-standard sleeping car, Pasco to Chicago; 10 section, 1 drawing room, 1 compartment standard sleeping car, Portland to Chicago; 16 section tourist sleeping car, Portland to Chicago; coach, Portland to Chicago; dining car, Pasco to Chicago.

No. 4-4. Columbia River Express—Alaskan. Reserved seat coach, air conditioned, Portland to Pasco, Pasco to Spokane. Cafe car, air conditioned, Portland to Pasco, Pasco to St. Paul. Standard sleeping car, air conditioned, 10 sections, 1 compartment, 1 drawing room, Spokane to St. Paul. Coaches, non-air conditioned, Portland to Pasco; air conditioned, Pasco to St. Paul.

WESTBOUND

No. 1. North Coast Limited—AIR CONDITIONED—(C.B. & Q.-N.P.-S. P. & S.)
3 compartment, 1 drawing room, buffet-lounge-standard sleeping car, Chicago to Pasco; 10 section, 1 drawing room, 1 compartment, standard sleeping car, Chicago to Portland; 16 section tourist sleeping car, Chicago to Portland; coach, Chicago to Portland. Dining car, Chicago to Pasco, Wishram to Portland.

No. 3. Alaskan—AIR CONDITIONED. Connects with S. P. & S. No. 1 at Pasco. Standard sleeping car, 10 sections, 1 compartment, 1 drawing room, St. Paul to Spokane. Cafe car, St. Paul to Pasco. Coach, St. Paul to Pasco, Pasco to Portland.

EMPIRE BUILDER AND NORTH COAST LIMITED ARE COMPLETELY AIR CONDITIONED

N. A. C. Non air-conditioned Light face figures denote A. M. time Bold face figures denote P. M. time Ar. Arrive Lv. Leave f Stop on signal

EASTBOUND

No. 2. Empire Builder—AIR CONDITIONED—(S.P. & S.-G.N.-C.B. & Q.)
8 section buffet-lounge-observation-standard sleeping car, Portland to Spokane; 10 section observation-lounge-standard sleeping car, Spokane to Chicago; 8 section 1 drawing room, 2 compartment, standard sleeping car, Portland to Chicago; 16 section tourist sleeping car, Portland to Chicago; coaches, Portland to Spokane, Spokane to Chicago; dining car, Spokane to Chicago.

No. 2-28. Observation lounge car, with buffet, standard and latest type tourist sleeping car and coaches (all air conditioned), Portland to Spokane, and non-air conditioned coaches only, with light meal service, Spokane to St. Paul.

No. 4-4. Columbia River Express—Air conditioned reserved seat coach, cafe, and non-air conditioned coach, Portland to Pasco. Air conditioned reserved seat coach and air conditioned coach via Northern Pacific Railway, Pasco to Spokane.

WESTBOUND

No. 1. Empire Builder—AIR CONDITIONED—(C.B. & Q.-G.N.-S.P. & S.)
10 section observation-lounge-standard sleeping car, Chicago to Spokane; 8 section buffet lounge-observation-standard sleeping car, Spokane to Portland; 8 section, 1 drawing room, 2 compartment, standard sleeping car, Chicago to Portland; 16 section tourist sleeping car, Chicago to Portland; coach, Chicago to Spokane, Spokane to Portland; dining car, Chicago to Spokane, Wishram to Portland.

No. 27-1. Non-air conditioned coaches only, with light meal service, St. Paul to Spokane. Air-conditioned observation lounge car with buffet, and 8 standard sleeping car sections; 8 section, 2 compartment, 1 drawing room, standard sleeping car, latest type tourist sleeping car, and coaches, Spokane to Portland.

No. 5-3. Columbia River Express—Air conditioned reserved seat coach cafe, and air conditioned coach, Spokane to Pasco via Northern Pacific Ry. Air conditioned reserved seat coach and non-air conditioned coach, Pasco to Portland via S. P. & S. Ry.



SPOKANE, PORTLAND AND SEATTLE RAILWAY SYSTEM

OREGON TRUNK RY.

Pacific Time

PORTLAND - WISHRAM - PASCO - SPOKANE TRAINS

SPECIAL STOPS	Eastbound, Read Down				Westbound, Read Up			
	No. 2 Daily	1st No. 2 Daily	No. 4 Daily	Elva. Miles	No. 3 Daily	2nd No. 1 Daily	1st No. 1 Daily	
No. 1. At any station to discharge revenue passengers from east of Spokane.	8.00	8.00	9.00	32 0.0	Lv. 5.08	7.35	7.35	
At any station west of Pasco to discharge revenue passengers from Spokane.	8.21	8.21	9.17	46 8.6	Ar. 4.45	7.10	7.10	
At any station east of Pasco to receive revenue passengers for Vancouver and Portland.	10.04	10.04	11.31	101 75.6	Lv. 1.50	4.40	4.40	
At any station east of Pasco to discharge passengers from Portland or Vancouver.	2.05	4.35	3.58	358 230.7	Lv. 10.42	1.35	1.35	

PORTLAND - REDMOND - BEND TRAINS

Read Down		June 12, 1943		Read Up	
No. 2 Daily	Miles	Spokane, Portland and Seattle Railway	Elevation	No. 1 Daily	
8.00	0.0	Lv. Portland	32	7.35	
No. 102 Daily	106.1	Lv. Wishram	166	3.00	
	111.8	Moody	286	2.40	
	117.7	Kloan	328	2.25	
	124.1	Lockit	354	2.09	
	132.5	Dike	508	1.50	
	136.7	Sinamox	510	1.36	
	146.0	Oakbrook	606	1.15	
	153.8	Sherar	783	1.28	
	156.9	Tuskan	788	1.28	
	160.8	Maupin	852	1.27	
	169.9	Nena	960	1.21	
	173.6	Frieda	1012	1.15	
	179.7	Nathan	1074	1.16	
	181.5	North Jct.	1102	1.11	
	186.4	Kaskela	1203	1.18	
	191.9	South Jct.	1254	1.03	
	200.1	Gateway	1787	1.41	
	205.6	Paxton	2169	1.26	
	211.3	Madras	2458	1.10	
	216.3	Metolius	2517	0.55	
	221.0	Culver	2624	0.43	
	228.1	Opal City	2850	0.25	
	235.6	Terrebonne	2863	0.05	
	238.4	Prineville Jct.	2918	0.58	
	241.1	Redmond	2983	0.50	
	250.2	Deschutes	3572	0.15	
	257.6	Ar. Bend	3618	8.00	

EQUIPMENT BETWEEN PORTLAND and BEND
Trains Nos. 2-102 and 1-103. Coaches daily between Portland and Bend (N. A. C.); observation cars daily between Portland and Wishram, A. C. See page 3.

CONNECTION AT BEND FOR KLAMATH FALLS
See schedule of Great Northern Ry. on page 6.

LYLE - KLICKITAT - GOLDENDALE TRAINS

No. 120 Daily ex. Sat.	Miles	S. P. & S. Ry. June 12, 1943	Elevation	No. 121 Daily ex. Sat.
11.40	85.3	Lv. Lyle	101	8.10
12.05	91.7	Wrights	288	7.45
12.20	95.6	Pitt	370	7.30
12.30	97.8	Lv. Klickitat	440	7.20
12.45	102.2	Wahkiakus	500	7.05
1.40	115.6	Warwick	1546	6.10
2.00	120.6	Centerville	1586	5.50
2.25	126.9	Ar. Goldendale	1610	5.25

Ex. Sat. denotes daily except Saturdays.
Ex. Sun. denotes daily except Sunday.
Equipment, coaches.

SAFETY FIRST—friendliness too!

EQUIPMENT—BETWEEN PORTLAND AND SPOKANE

Over-Night Limited. Trains Nos. 1 and 2. All regularly assigned equipment is air-conditioned. Observation-club 8 section standard sleeping cars with lounge, buffet, etc., standard 1 drawing room and 8 section, 2 compartment, 1 drawing room sleeping cars, latest type tourist sleeping cars, and coaches with lounges for women and men, and individual, reclining seats. N. A. C. coach, between Portland and Bend.

Columbia River Express. Day Trains Nos. 3 and 4. Air-conditioned observation reserved seat coaches, cafe meal service between Portland and Pasco, and A. C. equipment of similar character on connecting trains of Nor. Pac. Ry. between Pasco and Spokane, with reserved seat tickets issued locally, and between points east and west of Pasco, seat fare Portland-Spokane, 50c, plus tax. Non air conditioned coaches between Portland and Spokane via Pasco and N. P.

For Special Stops on Nos. 1 and 2. See left column, page 3, and under "References" below.

References: a Will stop to discharge revenue passengers from Spokane.
b Will stop on signal to receive revenue passengers for Bingen-White Salmon, Vancouver and Portland.
c Will stop on signal to receive revenue passengers for Vancouver and Portland.
f Stop on signal.
g Will stop on signal to discharge revenue passengers from Portland and Vancouver.
h Will stop to discharge revenue passengers from Portland, Vancouver and Bingen-White Salmon.
k Stops daily except Sunday.
m Stops to receive or discharge revenue Passengers to or from Pasco and East. Telegraph stations. N.A.C. Non air-conditioned. A.C. Air conditioned.

SPOKANE, PORTLAND AND SEATTLE RAILWAY SYSTEM



PORTLAND - ST. HELENS RAINIER - ASTORIA - CLATSOP BEACH TRAINS

Westbound—Read Down		Pacific Time		Eastbound—Read Up	
No. 21 Daily	Miles	S. P. & S. Ry. Pacific Time May 28, 1944	No. 22 Daily	Miles	
8.00	0.0	Lv. PORTLAND, Union Sta.	7.05	0.0	10th & Hoyt St. Sta.
8.16	7.3	Linnton	6.44	7.3	Linnton
8.45	19.9	Scappoose	6.15		
8.54	24.3	Warren	6.05		
9.03	27.6	ST. HELENS (Station)	5.58		
9.09	30.0	Columbia City	5.51		
9.18	33.2	Deer Island	5.44		
9.31	39.4	Goble	5.31		
9.37	42.2	Prescott	5.25		
9.47	45.8	Ar. RAINIER	5.17		
10.35		Ar. Longview	4.00		
8.00		Lv. By Direct Bus 30c	6.40		
9.47	45.8	Lv. RAINIER	5.17		
10.12	55.8	Mayger	4.54		
10.16	58.0	Locoda	4.50		
10.20	59.3	Quincy	4.47		
10.28	62.3	CLATSOP BEACH	4.40		
10.38	66.6	Marshland	4.30		
10.40	68.5	Woodson	4.26		
10.49	71.2	Westport	4.20		
10.55	73.5	Wauna	4.14		
11.02	76.8	Bradwood	4.07		
11.07	78.4	Clifton	4.03		
11.18	83.3	Brownsmead	3.53		
11.24	84.9	Blind Slough	3.49		
11.28	86.5	Knappa	3.45		
11.33	88.5	Ivy	3.40		
11.37	90.2	Svensen	3.37		
11.50	95.4	Van Dusen	3.25		
12.05	99.7	Ar. ASTORIA	3.15		
12.10	99.7	Lv. ASTORIA	3.00		
12.11	100.3	11th Street, Astoria	2.59		
12.29	105.6	Warrenton	2.45		
3.8		FT. STEVENS Freight Service Only			
12.36	108.3	Camp Clatsop	2.38		
12.44	112.1	West Gearhart	2.29		
12.52	115.7	Ar. SEASIDE	2.20		
1.00	118.0		2.15		

TRAIN EQUIPMENT

Nos. 21 and 22, carry observation-reserved seat coaches and coaches between Portland, Astoria, Gearhart and Seaside. Cafe dining service in reserved seat coaches, seat fare 30c (plus tax) between Portland and Astoria, Gearhart and Seaside.



That is how RAILWAY EXPRESS keeps your shipments speeding, direct from door to door. Now, when time is more vital than ever, you can help us save time by packing them securely—addressing them clearly—starting them early.

RAILWAY EXPRESS
AGENCY INC.
NATION-WIDE SERVICE

Light face figures denote A. M. time. Bold face figures denote P. M. time. Ar. Arrive. Lv. Leave f Stop on signal. t Telegraph office.

UNITED RAILWAYS BRANCH FREIGHT SERVICE ONLY

Miles	Portland	10th & Hoyt St. Sta.	Linnton
0.0			
7.3			
11.7	Burlington		
15.5	Rockton		
17.1	Bowers Jct.		
17.6	Helvetia		
19.1	Cornell		
20.2	Lincoln		
21.9	North Plains		
25.5	Christie		
26.5	Wilkesboro		
27.5	Banks		
31.8	Manning		
34.6	Buxton		
38.8	Tophill		
46.7	McPherson		
48.6	Vernonia		
57.0	Keasey		

OREGON ELECTRIC RY. FREIGHT SERVICE ONLY

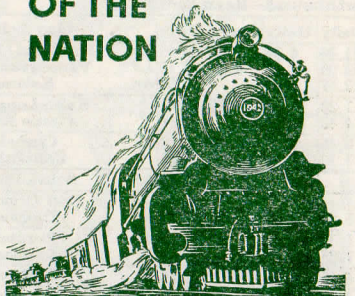
Miles	Portland	Beaverton	Tigard	Tualatin	Wilsonville	Donald	Broadacres	West Woodburn	St. Louis	Quinaby	Salem	Orville	Albany	Harrisburg	Junction City	Eugene
27.6																
32.1																
36.1																
43.0																
49.1																
51.9																
54.5																
57.4																
64.1																
71.2																
79.9																
97.8																
124.2																
128.7																
142.8																

GREAT NORTHERN RY. BEND, KLAMATH FALLS, BIEBER

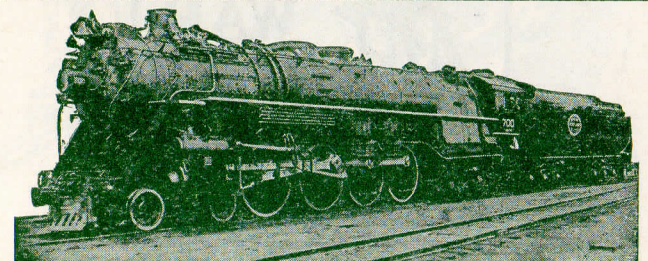
Miles	Lv. Bend	Ar. Lava Jct.	Ar. La Pine	Crescent	Chemult	Chiloquin	Algoma	Klamath Falls	Merrill	Seaside	Lookout	Ar. Bieber
0												
15												
32												
52												
68												
115												
133												
144												
159												
210												
222												
234												

Mixed train service on irregular schedule.

LIFE-LINE OF THE NATION



AMERICAN RAILROADS



Giants of the Rails on the Empire Builder and North Coast Limited

These great, fast, powerful locomotives handle the overnight limited trains of the Spokane, Portland and Seattle Railway between Portland and Spokane, in the through Portland-St. Paul-Chicago service of the famous Empire Builder via the Great Northern Railway and the North Coast Limited via the Northern Pacific Railway.

They embody every feature of superiority in motive power known to the famous Baldwin builder. A few dimensions will be of interest and show something of their size, elements for power and speed.

Length of engine and tender, 107 feet; weight 865,520 lbs.; diameter of driving wheels, 77 inches, boiler, 88 inches; steam pressure, 260 pounds per square inch; tractive power, 69,800 pounds; capacity of tender, 20,000 gallons of water, 6,000 of fuel oil; cylinders, 28 by 31 inches; all axles have roller bearings.

Light face figures denote A. M. time. Bold face figures denote P. M. time. Ar. Arrive. Lv. Leave f Stop on signal. t Telegraph office.




SPOKANE, PORTLAND AND SEATTLE RAILWAY SYSTEM
CONNECTIONS AT PORTLAND

PORTLAND - PUGET SOUND - BRITISH COLUMBIA
NORTHERN PACIFIC RY. - GREAT NORTHERN RY. - UNION PACIFIC R. R.

Northbound - Read Down				Southbound - Read Up				
Daily	Daily	Daily	Daily	Daily	Daily	Daily	Daily	
11.30	4.00	1.30	8.45	Lv. Portland, Un. Sta. Ar	2.20	5.05	9.40	6.45
12.05	4.25	1.52	9.15	Lv. Vancouver, Wn. Ar	1.45	4.36	9.06	6.15
12.57			10.03	Ar. Kalama. Lv	12.56			4.55
1.30	5.13	2.38	10.21	" Kelso-Longview " Ar	12.36	3.42	8.12	4.35
1.48			10.37	" Castle Rock " Ar	12.17			4.05
2.45	6.06	3.26	11.37	Ar. Chehalis " Ar	11.26	2.48	7.16	3.05
3.10	6.21	3.35	11.51	" Centralia " Ar	11.15	2.43	7.06	2.53
			12.08	Ar. South Bend " Ar			13.16	
			12.22	Ar. East Olympia " Ar	2.13	6.35	1.59	
5.00	7.40	4.48	1.30	Ar. Tacoma " Ar	9.40	1.24	5.45	1.00
† 1.36				Ar. Aberdeen " Ar			13.06	
† 1.55				Ar. Hoquiam " Ar			12.56	
k 6.45	k 9.00	k 5.50	u 2.55	Ar. Seattle. Lv	k 8.20	k 12.30	u 4.30	k 11.30
8.30	9.30	6.00		Lv. Seattle. Ar	8.00		2.30	9.35
9.18	10.44	6.56		Ar. Everett. Lv	6.55		1.10	8.38
11.40		9.10		Ar. Bellingham. Lv			11.27	6.37
2.15		11.15		Ar. Vancouver, B. C. Lv			9.00	4.16

† Daily except Sunday. b To and from Olympia by bus. k King Street Station. p Stops from Portland and beyond. u Union Station.

FOR VICTORY



BUY UNITED STATES WAR BONDS AND STAMPS

CLATSOP BEACH
SEASIDE - GEARHART PACIFIC OCEAN

ALL-YEAR SEASHORE RESORT

Surrounded by evergreen forests and a background of mountains, Clatsop Beach has every facility for visitors—golf courses, fishing, amusement places, sea foods, pure water, good hotels, restaurants, cottages, and camps. Along the expanding Columbia River, from Portland to Astoria. Train schedules page 5.

SOUTHERN PACIFIC COMPANY

Southbound, Read Down					Northbound, Read Up						
17	329	15	23	19	M	May, 1943	330	16	24	18	20
10.00	7.15	7.00	5.20	8.00	0	Lv. Portland. Ar	7.55	10.05	1.05	5.45	10.50
11.49	9.30	8.50	6.57	9.55	53	Ar. Salem. Lv	5.50	8.05		3.55	8.50
12.45	10.35	9.45	7.40	10.44	80	" Albany " Ar	4.50	7.18		3.10	8.05
	11.05	11.05	8.35	11.15	91	" b Corvallis b " Ar		6.35		2.25	6.50
1.45	11.42	10.45	8.38	11.55	124	" Eugene " Ar	3.30	6.05	9.48	2.05	6.43
	7.00				246	" Marshfield " Ar	7.00				
8.20		5.45	2.50	7.20	318	" Klamath Falls " Ar	11.10	4.15	7.55	12.10	
Oregonian	1.05	West Coast	Cascade	b 4.33	144	" Cottage Grove " Ar	2.20				
	3.35			b 6.45	196	" Roseburg " Ar	12.05				
	7.34			b 9.25	237	" Grants Pass " Ar	8.15				
	8.55			b 10.26	323	" Medford " Ar	7.15				
	9.25				342	" Ashland " Ar	6.30				
b 8.05	6.00	b 12.50	8.05	657		" Sacramento " Ar	10.20	5.10	7.40	10.30	
9.32	10.18	2.08	10.02	719		" Oakland, 16th St. " Ar	9.02	4.44	7.30	8.55	
9.40	10.25	2.15	10.10	721		" Oakland Pier " Ar	7.56	4.35	7.15	8.40	
10.20	10.50	2.50	10.50	724		" San Francisco " Ar	7.30	4.00	6.30	8.00	
	9.55		10.00	1106		" Los Angeles " Ar	5.30		8.00	8.00	

b—By Bus. All coach seats reserved except trains 329-330 and trains 18 and 19 between Portland and Eugene only.

EQUIPMENT OF TRAINS
Train 23-24. Cascade.—(Air Conditioned). Between Portland and San Francisco. Standard sleeping car with sections, drawing rooms, compartments, bedrooms. Dining car. First class tickets required.
Train 23-24. Beaver. (Air Conditioned). Between Portland and San Francisco. Tourist sleeping cars, reclining chair cars and dining car. Chair car seats reserved.
Train 15-16. West Coast.—(Air Conditioned). Between Portland and Los Angeles. Standard sleeping car, tourist sleeping car, reclining chair car and dining car.
Train 17-18. Oregonian.—(Air Conditioned). Between Portland and San Francisco. Standard sleeping car, tourist sleeping cars, dining car, reclining chair cars and coaches.
Train 19-20. Klamath.—(Air Conditioned). Between Portland and San Francisco. Standard sleeping cars, tourist sleeping cars, dining car, reclining chair cars and coaches.
Train 329-330. Rogue River.—Between Portland and Ashland. Standard A. C. sleeping car, sections and drawing room, lunch car, and coach. Between Portland and Marshfield, N. A. C. tourist sleeping car and coach.

SAN FRANCISCO—LOS ANGELES—COAST LINE

38	76	70	72	98	M	August, 1943	37	99	71	69	75
7.05	9.00	6.30	1.00	8.15	0	Lv. San Francisco. Ar	5.35	6.00	6.45	8.45	9.00
8.20	10.03	7.40	2.10	9.08	47	Ar. San Jose. Lv	4.25	5.03	5.20	7.05	7.45
3.10	3.02	1.20	9.15	1.16	248	" San Luis Obispo " Ar	10.30	12.55	9.55	1.10	2.40
	5.58	5.05	2.25	3.35	367	" Santa Barbara " Ar	10.35	6.10	9.50	11.44	
	9.00	8.35	6.45	6.00	471	" Los Angeles " Ar	8.15	1.00	6.30	8.00	

SAN FRANCISCO—LOS ANGELES—VALLEY LINE

56	26	52	M	September 5, 1943	51	25	55	
8.30	5.00	8.00	0	Lv. San Francisco. Ar	9.30		6.50	
9.05	5.35	8.30	4	" Oakland Pier " Ar	8.55		6.15	
	5.00	11.55	1.50	206	Ar. Fresno. Lv	3.40	2.45	10.15
	9.00	2.55	4.22	313	" Bakersfield " Ar	1.19	11.30	5.50
	6.15	9.30	10.00	484	" Los Angeles " Ar	8.00	5.00	8.25

All coach seats reserved except trains 37-38 and 56.

UNION PACIFIC RAILROAD

Read Down			Read Up		
No. 12	No. 18	No. 26	APRIL 25, 1943		
Daily	Daily	Daily	No. 25	No. 17	No. 11
8.00	6.30	9.00	Lv. Portland. Ar	6.30	7.30
9.43	8.09	10.53	Ar. Hood River. Lv	4.20	5.30
10.20	8.46	11.35	" The Dalles. Lv	3.40	4.50
	12.05	3.15	Ar. Pendleton. Ar	10.35	1.05
	4.56	8.07	" Baker. Ar	5.30	8.07
	8.52	12.14	" Payette. Ar	3.23	6.18
	9.07	12.26	" Ontario. Ar	3.10	6.08
	10.10	1.35	" Nampa. Ar	1.55	6.10
	10.50	2.15	Ar. Boise. Ar	1.10	4.35
	5.15	9.10	Ar. Pocatello. Ar	5.55	11.00
	9.55	1.40	Ar. Ogden. Ar	12.55	
	11.30	3.15	Ar. Salt Lake. Ar	11.05	
	7.35	1.50	Ar. Cheyenne. Lv	1.05	8.45
	11.15	5.54	Ar. Denver. Lv	8.45	5.10

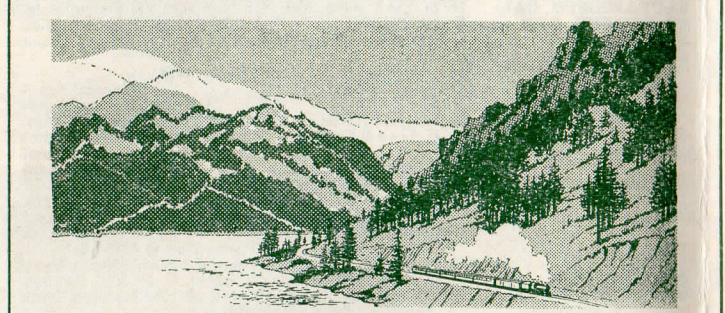
SPOKANE, PORTLAND AND SEATTLE RAILWAY SYSTEM
CONNECTIONS AT SPOKANE AND PASCO



GREAT NORTHERN RY.		SPOKANE INT'L.-CAN. PACIFIC					
Bus Daily	Bus Daily	Bus Daily	Bus Daily				
5.30	8.15	Lv. Spokane. Ar	3.12	7.17	2 Daily	Lv. Portland. Ar	7.35
6.18	9.03	" Deer Park. Ar	2.20	6.25	11.45	Lv. Spokane (S.I.Ry.) Ar	11.50
7.29	10.14	" Chewelah. Ar	1.13	5.18	4.22	Ar. Macleod (C.P.R.) Lv	11.00
8.15	11.00	" Colville. Ar	12.30	4.35	5.30	" Lethbridge. Lv	9.20
8.36	11.24	" Kettle Falls. Ar	12.05	4.05	10.30	Ar. Calgary. Lv	7.00
					6.25	Ar. Edmonton. Lv	12.10
ExSu.	11.35	" Marcus. Ar	3.51	9.30	Ar. Medicine Hat. Lv	4.50	
	12.26	" Northport. Ar	3.00	7.15	" Moose Jaw. Lv	8.25	
	1.21	Ar. Trail, B. C. Lv	2.00	8.40	" Regina. Lv	6.55	
	5.00	Ar. Nelson. Lv	11.30	6.15	Ar. Winnipeg. Lv	9.00	

NORTHERN PACIFIC East of Pasco		NORTHERN PAC. Walla Walla					
6 Daily	4 Daily	5 Daily	3 Daily				
8.00	9.00	Lv. Portland. Ar	5.08	7.35	347 Daily	Lv. Portland. Ar	7.35
3.00	4.35	Lv. Pasco. Ar	10.42	10.30	8.00	Lv. Pasco. Ar	9.55
	5.25	" Connell. Ar	9.53	9.39	4.35	" Attalia. Ar	9.13
	6.16	" Lind. Ar	9.09	8.53	5.04	" Eureka. Ar	8.32
	5.15	" Ritzville. Ar	8.42	8.24	5.48	Ar. Walla Walla. Lv	7.30
	5.51	" Sprague. Ar	8.07	7.46	6.33		
	6.33	Ar. Cheney. Lv	7.30	7.08			

NORTHERN PACIFIC West of Pasco		NORTHERN PACIFIC				
5 Daily	3 Daily	1 Daily	2 Daily			
8.00	9.00	9.00	Lv. Portland. Ar	5.08	5.08	7.35
10.52	10.40	12.45	Lv. Pasco. Ar	3.52	2.40	4.20
11.02	10.55		" Kennewick. Ar	1.29	2.29	4.08
12.06	11.59		" Prosser. Ar	1.23	2.23	3.11
12.53	12.49	2.55	" Toppenish. Ar	1.54	12.15	2.00
1.30	1.35	2.55	" Yakima. Ar	1.54	12.15	2.00
2.45	2.45	4.01	Ar. Ellensburg. Lv	12.42	10.56	12.37



Columbia River and Cascade Range
Between Portland and Spokane
Along the Columbia and Snake Rivers and through the Heart of the Cascade Range
BONNEVILLE DAM—BEACON ROCK
THE DALLES OF THE COLUMBIA—COLUMBIA RIVER GORGE

His Ticket
HOME



RIGHT OF WAY FOR THE U.S.A.

Railroads will sell a one-way coach ticket at 1¼ cents per mile to military personnel presenting proper credential following their discharge from the service. This 40% reduction is neither for the purpose of increasing train travel, nor for profit. It is just a bit of help from the railroads toward getting service men and women back home and into civilian life.

Association of **AMERICAN RAILROADS**



SPokane, PORTLAND AND SEATTLE RAILWAY SYSTEM

Sleeping, Parlor Car and Reserved Seat Fares

Federal Tax Extra

For information only. Subject to change without notice.

Table with columns for 'BETWEEN AND Effective April 1, 1942', 'PORTLAND' (Lower Berth, Tourist), 'SPOKANE' (Lower Berth, Tourist), and 'Table basis for determining charges for Standard Upper Berths, Drawing Rooms and Compartments' (Where Lower Berth rate is, Upper Berth rate will be, Drawing Room rate will be, Compartment rate will be).

The charge for upper berths in Tourist cars is approximately 76% of the charge made for lower Tourist berth. Applies for 2 or more passengers. When occupied by one passenger drawing room rate is 2 1/2 times Standard lower berth rate and compartment is two times Standard lower berth rates. Rate for section when lower berth only is occupied will be quoted by ticket agents. When both lower and upper berths are used, combination of fares will apply.

Through cars not operated in all trains; fare applies for continuous trip via direct connections. A compartment is a private room with lower and upper berths and toilet; a drawing room has a divan berth in addition. Occupancy of a drawing room requires 1 1/2 adult rail tickets, or their equivalent; requirement for compartment, one such ticket between S. P. & S. N. P.-G. N. and connections. 1/10 between certain other lines; requirement for section, one such ticket.

BAGGAGE IN SLEEPING CARS. - Hand baggage in sleeping cars is restricted to what may conveniently be placed in berth or at seat occupied by passengers. All baggage should be marked with name and permanent address of owner.

GENERAL OFFICES EXECUTIVE, TRAFFIC AND PURCHASING DEPARTMENTS American Bank Building 621 S. W. Morrison Street ACCOUNTING AND OPERATING DEPARTMENTS N. W. Eleventh Avenue and N. W. Hoyt Streets

- C. E. DENNEY, President. St. Paul 1, Minn. F. J. GAVIN, Vice-President. St. Paul 1, Minn. T. F. DIXON, Vice-President and General Manager, Portland 7, Oregon. ROBT. CROSBIE, Comptroller. Portland 7, Oregon. A. J. WITCHEL, Secretary and Chief Engineer. Portland 7, Oregon. T. L. PADDEN, Treasurer. Portland 7, Oregon. G. R. WILLIAMS, Purchasing Agent. Portland 7, Oregon. E. H. SHOWALTER, Superintendent. Portland 7, Oregon. J. C. MOORE, Traffic Manager. Portland 7, Oregon. H. W. SHIELDS, General Passenger Agent. Portland 7, Oregon. GEO. F. EHLEN, General Freight Agent. Portland 7, Oregon. E. H. BLOCK, Asst. to the Gen. Frt. & Pass. Agt. Portland 7, Oregon. KENNETH C. MILLER, General Industrial and Agricultural Agent. Portland 7, Oregon. J. C. DARIES, Right of Way and Tax Agent. Portland 7, Oregon.

- Representatives ALBANY, ORE. E. V. GRAHAM (Phone M. 291) Agt., O. E. Ry. Sta. ASTORIA, ORE. R. C. BAKER, 20th and Commercial (Phone 113) Agent H. W. LINDSAY, City Passenger and Ticket Agent BEND, ORE. R. P. JEFFREY (Phone 454) Agt., Passenger Sta. B. P. GILBERT (Phone 438) Trav. Frt. & Pass. Agt. S. A. SEXSMITH (Phone 107) Agt., O. E. Ry. Sta. EUGENE, ORE. E. B. NELSON, Traveling Freight Agent HILLSBORO, ORE. L. SHERMAN (Ph. M. 541) Agt., O. E. Ry. Frt. Depot JUNCTION CITY, ORE. L. W. MALLORY (Ph. M. 382) Agt., O. E. Ry. Frt. Depot LOS ANGELES 14, CALIF. Great Northern Railway, 919 Associated Realty Bldg., Phone Vandike 1201. W. E. MCCORMICK, General Agent S. L. WILLIAMS, District Passenger Agent H. D. HANSCOM, Trav. Freight & Pass. Agent Northern Pacific Railway, 401 Associated Realty Bldg., Phone Trinity 2322. J. C. SPRACKLIN, General Agent J. E. BEATY, City Freight & Pass. Agent T. A. MURPHY, Traveling Freight & Passenger Agent G. R. LALLY, Gen. Agt., Gt. Nor. Ry., 611 Central Bank Building, Phone Templebar 7672-73. D. F. WALKER, Gen. Agt., Nor. Pac. Ry., 815 Central Bank Building, Phone Glencourt 8717. PORTLAND, ORE. A. F. LEE, General Agent Consolidated Ticket Office, S. W. Broadway and Morrison St. Telephone BRy. 5631. J. L. MILLER, Ticket Agent, Union Station, Foot of N. W. 6th Avenue, Telephone Broadway 3421. R. E. HENDERSHOTT, General Agent R. A. LAWRENCE, Trav. Freight and Pass. Agent A. W. PHILLIPS, City Freight Agent W. Z. MYERS, City Freight Agent C. J. LIVINGSTON, District Passenger Agent P. H. BRINGMANN, Local Freight Agent, N. W. 11th and Hoyt, Phone ATwater 9111. REDMOND, ORE. G. W. SEXSMITH (Phone 13) Agt., Passenger Station SACRAMENTO, CALIF. H. D. DAY, Gen. Agt., Gt. Nor. Ry., 223 Forum Bldg. ST. HELENS, ORE. M. RUTHERFORD (Phone 58) Agt., S. P. & S. Station SALEM, ORE. J. CONDRA (Phone 4763) O. E. Ry. Freight Depot SAN FRANCISCO 5, CALIF. Northern Pacific Railway, 657 Market St. Phone Sutter 1078. DANIEL TINNEY, General Agent H. E. PETERSEN, Assistant General Agent W. CEDERBERG, Trav. Freight and Pass. Agt. C. H. GAARDSMOE, Trav. Freight and Pass. Agt. W. J. RIDDELL, City Freight and Pass. Agent Great Northern Railway, 679 Market Street. Phone Sutter 6051-52. A. J. SCOTT, General Agent, Passenger Dept. C. G. ALEXANDER, Traveling Passenger Agent JOSEPH L. TIERNEY, City Passenger Agent 878 Monadnock Bldg. Phone Yukon 1246-7-8. G. A. SORRELL, General Agent, Freight Dept. C. O. BUTLER (Phone 45), Agent, S. P. & S. Ry. Sta. SPOKANE 8, WASH. J. C. WRIGHT, General Agent, 925 Old National Bank Building, Phone Main 4238. R. C. MURPHY, General Agent, Passenger Dept. Davenport Hotel, Phone Main 5141. E. F. BAIRD, City Passenger and Ticket Agent, Sprague Ave. and Wall St. Phone Main 5321. H. W. GREEN, Ticket Agent, Gt. Nor. Ry. Sta. H. M. LABERTEW, Agent (Phone 2881) S. P. & S. Ry. Sta. R. I. THOMPSON (Phone 735) Passenger Station

- PORTLAND, ORE. A. F. LEE, General Agent Consolidated Ticket Office, S. W. Broadway and Morrison St. Telephone BRy. 5631. J. L. MILLER, Ticket Agent, Union Station, Foot of N. W. 6th Avenue, Telephone Broadway 3421. R. E. HENDERSHOTT, General Agent R. A. LAWRENCE, Trav. Freight and Pass. Agent A. W. PHILLIPS, City Freight Agent W. Z. MYERS, City Freight Agent C. J. LIVINGSTON, District Passenger Agent P. H. BRINGMANN, Local Freight Agent, N. W. 11th and Hoyt, Phone ATwater 9111. REDMOND, ORE. G. W. SEXSMITH (Phone 13) Agt., Passenger Station SACRAMENTO, CALIF. H. D. DAY, Gen. Agt., Gt. Nor. Ry., 223 Forum Bldg. ST. HELENS, ORE. M. RUTHERFORD (Phone 58) Agt., S. P. & S. Station SALEM, ORE. J. CONDRA (Phone 4763) O. E. Ry. Freight Depot SAN FRANCISCO 5, CALIF. Northern Pacific Railway, 657 Market St. Phone Sutter 1078. DANIEL TINNEY, General Agent H. E. PETERSEN, Assistant General Agent W. CEDERBERG, Trav. Freight and Pass. Agt. C. H. GAARDSMOE, Trav. Freight and Pass. Agt. W. J. RIDDELL, City Freight and Pass. Agent Great Northern Railway, 679 Market Street. Phone Sutter 6051-52. A. J. SCOTT, General Agent, Passenger Dept. C. G. ALEXANDER, Traveling Passenger Agent JOSEPH L. TIERNEY, City Passenger Agent 878 Monadnock Bldg. Phone Yukon 1246-7-8. G. A. SORRELL, General Agent, Freight Dept. C. O. BUTLER (Phone 45), Agent, S. P. & S. Ry. Sta. SPOKANE 8, WASH. J. C. WRIGHT, General Agent, 925 Old National Bank Building, Phone Main 4238. R. C. MURPHY, General Agent, Passenger Dept. Davenport Hotel, Phone Main 5141. E. F. BAIRD, City Passenger and Ticket Agent, Sprague Ave. and Wall St. Phone Main 5321. H. W. GREEN, Ticket Agent, Gt. Nor. Ry. Sta. H. M. LABERTEW, Agent (Phone 2881) S. P. & S. Ry. Sta. R. I. THOMPSON (Phone 735) Passenger Station

- PORTLAND, ORE. A. F. LEE, General Agent Consolidated Ticket Office, S. W. Broadway and Morrison St. Telephone BRy. 5631. J. L. MILLER, Ticket Agent, Union Station, Foot of N. W. 6th Avenue, Telephone Broadway 3421. R. E. HENDERSHOTT, General Agent R. A. LAWRENCE, Trav. Freight and Pass. Agent A. W. PHILLIPS, City Freight Agent W. Z. MYERS, City Freight Agent C. J. LIVINGSTON, District Passenger Agent P. H. BRINGMANN, Local Freight Agent, N. W. 11th and Hoyt, Phone ATwater 9111. REDMOND, ORE. G. W. SEXSMITH (Phone 13) Agt., Passenger Station SACRAMENTO, CALIF. H. D. DAY, Gen. Agt., Gt. Nor. Ry., 223 Forum Bldg. ST. HELENS, ORE. M. RUTHERFORD (Phone 58) Agt., S. P. & S. Station SALEM, ORE. J. CONDRA (Phone 4763) O. E. Ry. Freight Depot SAN FRANCISCO 5, CALIF. Northern Pacific Railway, 657 Market St. Phone Sutter 1078. DANIEL TINNEY, General Agent H. E. PETERSEN, Assistant General Agent W. CEDERBERG, Trav. Freight and Pass. Agt. C. H. GAARDSMOE, Trav. Freight and Pass. Agt. W. J. RIDDELL, City Freight and Pass. Agent Great Northern Railway, 679 Market Street. Phone Sutter 6051-52. A. J. SCOTT, General Agent, Passenger Dept. C. G. ALEXANDER, Traveling Passenger Agent JOSEPH L. TIERNEY, City Passenger Agent 878 Monadnock Bldg. Phone Yukon 1246-7-8. G. A. SORRELL, General Agent, Freight Dept. C. O. BUTLER (Phone 45), Agent, S. P. & S. Ry. Sta. SPOKANE 8, WASH. J. C. WRIGHT, General Agent, 925 Old National Bank Building, Phone Main 4238. R. C. MURPHY, General Agent, Passenger Dept. Davenport Hotel, Phone Main 5141. E. F. BAIRD, City Passenger and Ticket Agent, Sprague Ave. and Wall St. Phone Main 5321. H. W. GREEN, Ticket Agent, Gt. Nor. Ry. Sta. H. M. LABERTEW, Agent (Phone 2881) S. P. & S. Ry. Sta. R. I. THOMPSON (Phone 735) Passenger Station

- PORTLAND, ORE. A. F. LEE, General Agent Consolidated Ticket Office, S. W. Broadway and Morrison St. Telephone BRy. 5631. J. L. MILLER, Ticket Agent, Union Station, Foot of N. W. 6th Avenue, Telephone Broadway 3421. R. E. HENDERSHOTT, General Agent R. A. LAWRENCE, Trav. Freight and Pass. Agent A. W. PHILLIPS, City Freight Agent W. Z. MYERS, City Freight Agent C. J. LIVINGSTON, District Passenger Agent P. H. BRINGMANN, Local Freight Agent, N. W. 11th and Hoyt, Phone ATwater 9111. REDMOND, ORE. G. W. SEXSMITH (Phone 13) Agt., Passenger Station SACRAMENTO, CALIF. H. D. DAY, Gen. Agt., Gt. Nor. Ry., 223 Forum Bldg. ST. HELENS, ORE. M. RUTHERFORD (Phone 58) Agt., S. P. & S. Station SALEM, ORE. J. CONDRA (Phone 4763) O. E. Ry. Freight Depot SAN FRANCISCO 5, CALIF. Northern Pacific Railway, 657 Market St. Phone Sutter 1078. DANIEL TINNEY, General Agent H. E. PETERSEN, Assistant General Agent W. CEDERBERG, Trav. Freight and Pass. Agt. C. H. GAARDSMOE, Trav. Freight and Pass. Agt. W. J. RIDDELL, City Freight and Pass. Agent Great Northern Railway, 679 Market Street. Phone Sutter 6051-52. A. J. SCOTT, General Agent, Passenger Dept. C. G. ALEXANDER, Traveling Passenger Agent JOSEPH L. TIERNEY, City Passenger Agent 878 Monadnock Bldg. Phone Yukon 1246-7-8. G. A. SORRELL, General Agent, Freight Dept. C. O. BUTLER (Phone 45), Agent, S. P. & S. Ry. Sta. SPOKANE 8, WASH. J. C. WRIGHT, General Agent, 925 Old National Bank Building, Phone Main 4238. R. C. MURPHY, General Agent, Passenger Dept. Davenport Hotel, Phone Main 5141. E. F. BAIRD, City Passenger and Ticket Agent, Sprague Ave. and Wall St. Phone Main 5321. H. W. GREEN, Ticket Agent, Gt. Nor. Ry. Sta. H. M. LABERTEW, Agent (Phone 2881) S. P. & S. Ry. Sta. R. I. THOMPSON (Phone 735) Passenger Station

- PORTLAND, ORE. A. F. LEE, General Agent Consolidated Ticket Office, S. W. Broadway and Morrison St. Telephone BRy. 5631. J. L. MILLER, Ticket Agent, Union Station, Foot of N. W. 6th Avenue, Telephone Broadway 3421. R. E. HENDERSHOTT, General Agent R. A. LAWRENCE, Trav. Freight and Pass. Agent A. W. PHILLIPS, City Freight Agent W. Z. MYERS, City Freight Agent C. J. LIVINGSTON, District Passenger Agent P. H. BRINGMANN, Local Freight Agent, N. W. 11th and Hoyt, Phone ATwater 9111. REDMOND, ORE. G. W. SEXSMITH (Phone 13) Agt., Passenger Station SACRAMENTO, CALIF. H. D. DAY, Gen. Agt., Gt. Nor. Ry., 223 Forum Bldg. ST. HELENS, ORE. M. RUTHERFORD (Phone 58) Agt., S. P. & S. Station SALEM, ORE. J. CONDRA (Phone 4763) O. E. Ry. Freight Depot SAN FRANCISCO 5, CALIF. Northern Pacific Railway, 657 Market St. Phone Sutter 1078. DANIEL TINNEY, General Agent H. E. PETERSEN, Assistant General Agent W. CEDERBERG, Trav. Freight and Pass. Agt. C. H. GAARDSMOE, Trav. Freight and Pass. Agt. W. J. RIDDELL, City Freight and Pass. Agent Great Northern Railway, 679 Market Street. Phone Sutter 6051-52. A. J. SCOTT, General Agent, Passenger Dept. C. G. ALEXANDER, Traveling Passenger Agent JOSEPH L. TIERNEY, City Passenger Agent 878 Monadnock Bldg. Phone Yukon 1246-7-8. G. A. SORRELL, General Agent, Freight Dept. C. O. BUTLER (Phone 45), Agent, S. P. & S. Ry. Sta. SPOKANE 8, WASH. J. C. WRIGHT, General Agent, 925 Old National Bank Building, Phone Main 4238. R. C. MURPHY, General Agent, Passenger Dept. Davenport Hotel, Phone Main 5141. E. F. BAIRD, City Passenger and Ticket Agent, Sprague Ave. and Wall St. Phone Main 5321. H. W. GREEN, Ticket Agent, Gt. Nor. Ry. Sta. H. M. LABERTEW, Agent (Phone 2881) S. P. & S. Ry. Sta. R. I. THOMPSON (Phone 735) Passenger Station

- PORTLAND, ORE. A. F. LEE, General Agent Consolidated Ticket Office, S. W. Broadway and Morrison St. Telephone BRy. 5631. J. L. MILLER, Ticket Agent, Union Station, Foot of N. W. 6th Avenue, Telephone Broadway 3421. R. E. HENDERSHOTT, General Agent R. A. LAWRENCE, Trav. Freight and Pass. Agent A. W. PHILLIPS, City Freight Agent W. Z. MYERS, City Freight Agent C. J. LIVINGSTON, District Passenger Agent P. H. BRINGMANN, Local Freight Agent, N. W. 11th and Hoyt, Phone ATwater 9111. REDMOND, ORE. G. W. SEXSMITH (Phone 13) Agt., Passenger Station SACRAMENTO, CALIF. H. D. DAY, Gen. Agt., Gt. Nor. Ry., 223 Forum Bldg. ST. HELENS, ORE. M. RUTHERFORD (Phone 58) Agt., S. P. & S. Station SALEM, ORE. J. CONDRA (Phone 4763) O. E. Ry. Freight Depot SAN FRANCISCO 5, CALIF. Northern Pacific Railway, 657 Market St. Phone Sutter 1078. DANIEL TINNEY, General Agent H. E. PETERSEN, Assistant General Agent W. CEDERBERG, Trav. Freight and Pass. Agt. C. H. GAARDSMOE, Trav. Freight and Pass. Agt. W. J. RIDDELL, City Freight and Pass. Agent Great Northern Railway, 679 Market Street. Phone Sutter 6051-52. A. J. SCOTT, General Agent, Passenger Dept. C. G. ALEXANDER, Traveling Passenger Agent JOSEPH L. TIERNEY, City Passenger Agent 878 Monadnock Bldg. Phone Yukon 1246-7-8. G. A. SORRELL, General Agent, Freight Dept. C. O. BUTLER (Phone 45), Agent, S. P. & S. Ry. Sta. SPOKANE 8, WASH. J. C. WRIGHT, General Agent, 925 Old National Bank Building, Phone Main 4238. R. C. MURPHY, General Agent, Passenger Dept. Davenport Hotel, Phone Main 5141. E. F. BAIRD, City Passenger and Ticket Agent, Sprague Ave. and Wall St. Phone Main 5321. H. W. GREEN, Ticket Agent, Gt. Nor. Ry. Sta. H. M. LABERTEW, Agent (Phone 2881) S. P. & S. Ry. Sta. R. I. THOMPSON (Phone 735) Passenger Station

- PORTLAND, ORE. A. F. LEE, General Agent Consolidated Ticket Office, S. W. Broadway and Morrison St. Telephone BRy. 5631. J. L. MILLER, Ticket Agent, Union Station, Foot of N. W. 6th Avenue, Telephone Broadway 3421. R. E. HENDERSHOTT, General Agent R. A. LAWRENCE, Trav. Freight and Pass. Agent A. W. PHILLIPS, City Freight Agent W. Z. MYERS, City Freight Agent C. J. LIVINGSTON, District Passenger Agent P. H. BRINGMANN, Local Freight Agent, N. W. 11th and Hoyt, Phone ATwater 9111. REDMOND, ORE. G. W. SEXSMITH (Phone 13) Agt., Passenger Station SACRAMENTO, CALIF. H. D. DAY, Gen. Agt., Gt. Nor. Ry., 223 Forum Bldg. ST. HELENS, ORE. M. RUTHERFORD (Phone 58) Agt., S. P. & S. Station SALEM, ORE. J. CONDRA (Phone 4763) O. E. Ry. Freight Depot SAN FRANCISCO 5, CALIF. Northern Pacific Railway, 657 Market St. Phone Sutter 1078. DANIEL TINNEY, General Agent H. E. PETERSEN, Assistant General Agent W. CEDERBERG, Trav. Freight and Pass. Agt. C. H. GAARDSMOE, Trav. Freight and Pass. Agt. W. J. RIDDELL, City Freight and Pass. Agent Great Northern Railway, 679 Market Street. Phone Sutter 6051-52. A. J. SCOTT, General Agent, Passenger Dept. C. G. ALEXANDER, Traveling Passenger Agent JOSEPH L. TIERNEY, City Passenger Agent 878 Monadnock Bldg. Phone Yukon 1246-7-8. G. A. SORRELL, General Agent, Freight Dept. C. O. BUTLER (Phone 45), Agent, S. P. & S. Ry. Sta. SPOKANE 8, WASH. J. C. WRIGHT, General Agent, 925 Old National Bank Building, Phone Main 4238. R. C. MURPHY, General Agent, Passenger Dept. Davenport Hotel, Phone Main 5141. E. F. BAIRD, City Passenger and Ticket Agent, Sprague Ave. and Wall St. Phone Main 5321. H. W. GREEN, Ticket Agent, Gt. Nor. Ry. Sta. H. M. LABERTEW, Agent (Phone 2881) S. P. & S. Ry. Sta. R. I. THOMPSON (Phone 735) Passenger Station

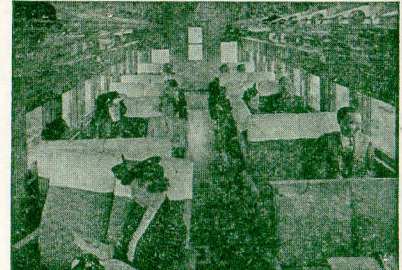
THE DAY TRIP

Between PORTLAND AND SPOKANE on the COLUMBIA RIVER EXPRESS

Between Portland and Pasco, via S. P. & S. Ry., and directly connecting trains between Pasco and Spokane via Northern Pacific Ry., with similar service.

AIR-CONDITIONED RESERVED SEAT COACHES WITH CAFE SERVICE

This is the day train service between these important cities through a fascinating country.



Reserved Seats

Reserved seats (50c plus tax) are of the latest individual, adjustable type, and passengers may enjoy many club features, including observatio n section, magazines, card table, writing desk, etc., with the dining room for sixteen guests, offering a generous range of menu at moderate prices.



Dining Room

Mt. Hood and others of the Cascade Range, the great Bonneville dam, two crossings of the Columbia river with 220 miles along its north bank, with forests, waterfalls, etc.



Observation Section

Schedules and equipment of these trains and of the night limited trains are shown on page 3, and fares on page 10.

