

STAGE AND BOAT CONNECTIONS

To points in Oregon and Washington reached from stations on the Spokane, Portland and Seattle Ry. east of Portland and on Oregon Trunk Ry.

Table with columns: Destination, From, Conveyance, Days, Time, Free Bge.lbs. Lists connections for Oregon and Washington routes.

Note 1—hourly 7:36 A.M. to 6:36 P.M., incl. 9:36 P.M., 12:36 A.M. # Phone Goldendale 1642 for special service for connections not shown. O Phone Main 1271 Cheney for special service. \* Suspends only in case of heavy ice in river. : 7:30 A.M. to 7:15 P.M. 7:30 A.M. and 4:30 P.M. Ex. Sun.—Except Sundays.

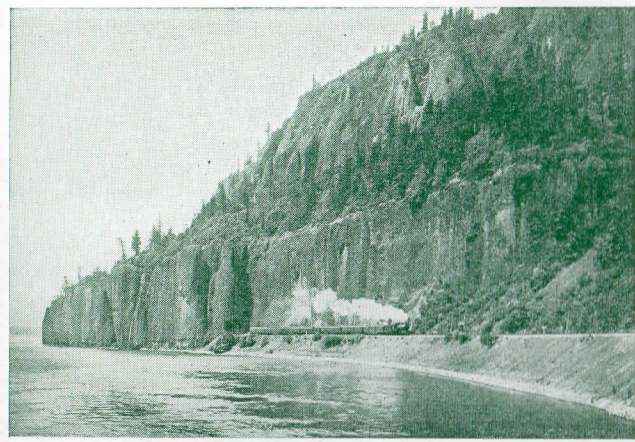
OCTOBER 1, 1943

SUBJECT TO CHANGE WITHOUT NOTICE



Spokane, Portland & Seattle Ry. Oregon Trunk Ry.

TIME TABLES



Cape Horn, Columbia River, S. P. & S. Ry.

SPOKANE, PORTLAND AND SEATTLE RAILWAY SYSTEM



TRANSCONTINENTAL TRAIN SERVICE—BETWEEN PORTLAND, SPOKANE AND THE EAST

VIA GREAT NORTHERN RY.

Table showing train schedules via Great Northern Ry. Columns: Daily No. 4, Daily No. 2, Daily No. 2, Miles, Spokane, Portland and Seattle Railway, Westbound, Read Up. Includes routes to Vancouver, Pasco, and Minneapolis.

m Stops to discharge passengers from Portland. q Daily except Monday. † Except Sunday.

EASTBOUND EQUIPMENT

No. 2. Empire Builder—AIR CONDITIONED—(S.P. & S.-G.N.-C.B. & Q.) 8 section buffet-lounge-observation-standard sleeping car, Portland to Spokane; 10 section observation-lounge-standard sleeping car, Spokane to Chicago; 8 section 1 drawing room, 2 compartment, standard sleeping car, Portland to Chicago; 16 section tourist sleeping car, Portland to Chicago; coaches, Portland to Spokane, Spokane to Chicago; dining car, Spokane to Chicago.

WESTBOUND

No. 1. Empire Builder—AIR CONDITIONED—(C.B. & Q.-G.N.-S.P. & S.) 10 section observation-lounge-standard sleeping car, Chicago to Spokane; 8 section buffet lounge-observation-standard sleeping car, Spokane to Portland; 8 section, 1 drawing room, 2 compartment, standard sleeping car, Chicago to Portland; 16 section tourist sleeping car, Chicago to Portland; coach, Chicago to Spokane, Spokane to Portland; dining car, Chicago to Spokane, Wishram to Portland. No. 27-1. Non-air conditioned coaches only, with light meal service, St. Paul to Spokane. Air-conditioned observation lounge car with buffet, and 8 standard sleeping car sections; 8 section, 2 compartment, 1 drawing room, standard sleeping car, latest type tourist sleeping car, and coaches, Spokane to Portland. No. 5-3. Columbia River Express.—Air conditioned reserved seat coach cafe, and air conditioned coach, Spokane to Pasco via Northern Pacific Ry. Air conditioned reserved seat coach and non-air conditioned coach, Pasco to Portland via S. P. & S. Ry.

VIA NORTHERN PACIFIC RY.

Table showing train schedules via Northern Pacific Ry. Columns: Daily No. 4, Daily No. 2, Daily No. 2, Miles, Spokane, Portland and Seattle Railway, Westbound, Read Up. Includes routes to Pasco, Spokane, and Fargo.

x Bus. z Motor. c Connects with No. 3 at Minneapolis. \* Daily except Sunday by bus. (a) Stops on flag to take to Billings and East where scheduled to stop. (b) Stops to leave from Billings and East where scheduled to stop.

EQUIPMENT

EASTBOUND No. 2. North Coast Limited—AIR CONDITIONED—(S.P. & S.-N.P.-C.B. & Q.) 8 section buffet-lounge-observation-standard sleeping car, Portland to Pasco; 3 compartment, 1 drawing room, buffet-lounge-standard sleeping car, Pasco to Chicago; 10 section, 1 drawing room, 1 compartment standard sleeping car, Portland to Chicago; 16 section tourist sleeping car, Portland to Chicago; coach, Portland to Chicago; dining car, Pasco to Chicago. No. 4-4. Columbia River Express—Alaskan. Reserved seat coach, air conditioned, Portland to Pasco, Pasco to Spokane. Cafe car, air conditioned, Portland to Pasco, Pasco to St. Paul. Standard sleeping car, air conditioned, 10 sections, 1 compartment, 1 drawing room, Spokane to St. Paul. Coaches, non-air conditioned, Portland to Pasco; air conditioned, Pasco to St. Paul.

WESTBOUND

No. 1. North Coast Limited—AIR CONDITIONED—(C.B. & Q.-N.P.-S. P. & S.) 3 compartment, 1 drawing room, buffet-lounge-standard sleeping car, Chicago to Pasco; 8 section buffet-lounge-observation-standard sleeping car, Pasco to Portland; 10 section, 1 drawing room, 1 compartment, standard sleeping car, Chicago to Portland; 16 section tourist sleeping car, Chicago to Portland; coach, Chicago to Portland. Dining car, Chicago to Pasco, Wishram to Portland. No. 3. Alaskan.—AIR CONDITIONED. Connects with S. P. & S. No. 1 at Pasco. Standard sleeping car, 10 sections, 1 compartment, 1 drawing room, St. Paul to Spokane. Cafe car, St. Paul to Pasco. Coach, St. Paul to Pasco, Pasco to Portland.

EMPIRE BUILDER AND NORTH COAST LIMITED ARE COMPLETELY AIR CONDITIONED

N. A. C. Non air-conditioned. Light face figures denote A. M. time. Bold face figures denote P. M. time. Ar. Arrive. Lv. Leave. f Stop on signal.



SPOKANE, PORTLAND AND SEATTLE RAILWAY SYSTEM

OREGON TRUNK RY.

Pacific Time

PORTLAND - WISHRAM - PASCO - SPOKANE TRAINS

Table with columns for train numbers (No. 1, 2, 3, 4), directions (Eastbound, Westbound), and stations (Spokane, Portland, Pasco, Wishram). Includes freight service details and equipment information.

PORTLAND - REDMOND - BEND TRAINS

Table with columns for train numbers (No. 102, 103), directions (Read Down, Read Up), and stations (Portland, Redmond, Bend, Wishram, etc.).

EQUIPMENT BETWEEN PORTLAND AND BEND Trains Nos. 2-102 and 1-103. Coaches daily between Portland and Bend (N. A. C.); observation cars daily between Portland and Wishram, A. C. See page 3.

CONNECTION AT BEND FOR KLAMATH FALLS See schedule of Great Northern Ry. on page 6.

LYLE - KLICKITAT - GOLDENDALE TRAINS

Table with columns for train numbers (No. 220, 221), directions, and stations (Lyle, Klickitat, Goldendale).

Ex. Sat. denotes daily except Saturdays. Ex. Sun. denotes daily except Sunday. Equipment, coaches.

For Special Stops on Nos. 1 and 2. See left column, page 3, and under "References" below. References: a Will stop to discharge revenue passengers from Spokane. b Will stop on signal to receive revenue passengers for Bingen-White Salmon, Vancouver and Portland. c Will stop on signal to receive revenue passengers for Vancouver and Portland. f Stop on signal. g Will stop on signal to discharge revenue passengers from Portland and Vancouver. h Will stop to discharge revenue passengers from Portland, Vancouver and Bingen-White Salmon. k Stops daily except Sunday. t Telegraph stations. N.A.C. Non air-conditioned. A.C. Air conditioned.

EQUIPMENT-BETWEEN PORTLAND AND SPOKANE

Over-Night Limited. Trains Nos. 1 and 2. All regularly assigned equipment is air-conditioned. Observation-club 8 section standard sleeping cars with lounge, buffet, etc., standard 1 drawing room and 8 section, 2 compartment, 1 drawing room sleeping cars, latest type tourist sleeping cars, and coaches with lounges for women and men, and individual, reclining seats. N. A. C. coach between Portland and Bend.

Columbia River Express. Day Trains Nos. 3 and 4. Air-conditioned observation reserved seat coaches, cafe meal service and non air-conditioned coaches between Portland and Pasco, and A. C. equipment of similar character on connecting trains of Nor. Pac. Ry. between Pasco and Spokane, with reserved seat tickets issued locally, and between points east and west of Pasco, seat fare Portland-Spokane, 50c, plus tax.

Light face figures denote A. M. time. Bold face figures denote P. M. time. Ar. Arrive. Lv. Leave. Stop on signal.

SPOKANE, PORTLAND AND SEATTLE RAILWAY SYSTEM



PORTLAND - ST. HELENS

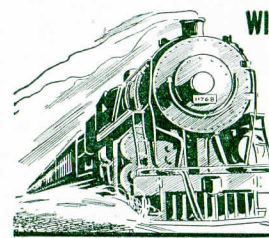
RAINIER - ASTORIA - CLATSOP BEACH TRAINS

Table with columns for train numbers (No. 21, 24), directions (Westbound, Eastbound), and stations (Portland, St. Helens, Rainier, Astoria, Clatsop Beach, etc.).

TRAIN EQUIPMENT

Nos. 21 and 24, carry observation-reserved seat coaches and coaches between Portland, Astoria and Seaside.

Cafe dining service in reserved seat coaches, seat fare 30c (plus tax) between Portland and Astoria, Gearhart and Seaside.



WINNING THE WAR IS ALL THAT MATTERS!

Today, when America's vast war effort demands that every muscle be strained in the interests of Victory, Railway Express is trying to do its part.

RAILWAY EXPRESS AGENCY INC. NATION-WIDE SERVICE

Light face figures denote A. M. time. Bold face figures denote P. M. time. Ar. Arrive. Lv. Leave. f Stop on signal. t Telegraph office.

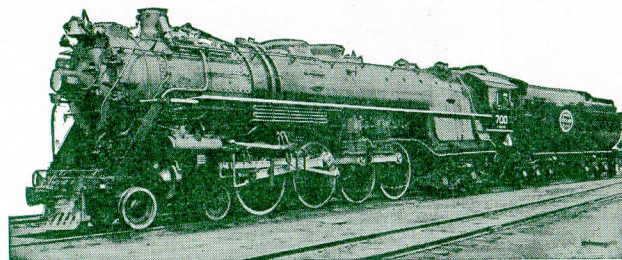
OREGON ELECTRIC RY.

PORTLAND-SALEM-ALBANY-EUGENE

Table with columns for miles, train numbers, and stations (Portland, Salem, Albany, Eugene).

GREAT NORTHERN RY. BEND, KLAMATH FALLS, BIEBER

Table with columns for daily mixed train service, miles, and stations (Bend, Klamath Falls, Bieber).



Giants of the Rails

on the Empire Builder and North Coast Limited

These great, fast, powerful locomotives have recently been placed on the runs of the overnight limited trains of the Spokane, Portland and Seattle Railway between Portland and Spokane, in the through Portland-St. Paul-Chicago service of the famous Empire Builder via the Great Northern Railway and the North Coast Limited via the Northern Pacific Railway.

They embody every feature of superiority in motive power known to the famous Baldwin builder. A few dimensions will be of interest and show something of their size, elements for power and speed.

Length of engine and tender, 107 feet; weight 865,520 lbs.; diameter of driving wheels, 77 inches, boiler, 88 inches; steam pressure, 260 pounds per square inch; tractive power, 69,800 pounds; capacity of tender, 20,000 gallons of water, 6,000 of fuel oil; cylinders, 28 by 31 inches; all axles have roller bearings.



SPOKANE, PORTLAND AND SEATTLE RAILWAY SYSTEM CONNECTIONS AT PORTLAND

Table with 12 columns showing train schedules for Portland - Puget Sound - British Columbia. Includes routes like Northern Pacific Ry., Great Northern Ry., and Union Pacific R.R. with departure and arrival times.

† Daily except Sunday. b To and from Olympia by bus. k King Street Station. p Stops from Portland and beyond. u Union Station.

FOR VICTORY BUY UNITED STATES WAR BONDS AND STAMPS. Illustration of a soldier with a rifle.

CLATSOP BEACH SEASIDE - GEARHART PACIFIC OCEAN. Illustration of a beach scene with people and a train.

ALL-YEAR SEASHORE RESORT

Surrounded by evergreen forests and a background of mountains, Clatsop Beach has every facility for visitors—golf courses, fishing, amusement places, sea foods, pure water, good hotels, restaurants, cottages, and camps. Along the expanding Columbia River, from Portland to Astoria. Train schedules page 5.

Light face figures denote A. M. time. Bold face figures denote P. M. time. Ar. Arrive. Lv. Leave. f Stop on Signal.

SOUTHERN PACIFIC COMPANY

Table with 12 columns showing train schedules for Southern Pacific Company. Includes routes like Oregonian, West Coast, Cascade, and Klamath Falls with departure and arrival times.

b—By Bus. All coach seats reserved except trains 329-330 and trains 18 and 19 between Portland and Eugene only.

EQUIPMENT OF TRAINS

Train 23-24. Cascade.—(Air Conditioned). Between Portland and San Francisco. Standard sleeping car with sections, drawing rooms, compartments, bedrooms. Dining car. First class tickets required.

SAN FRANCISCO—LOS ANGELES—COAST LINE

Table with 12 columns showing train schedules for San Francisco—Los Angeles—Coast Line. Includes routes like San Francisco, San Jose, San Luis Obispo, Santa Barbara, and Los Angeles.

SAN FRANCISCO—LOS ANGELES—VALLEY LINE

Table with 12 columns showing train schedules for San Francisco—Los Angeles—Valley Line. Includes routes like San Francisco, Oakland Pier, Fresno, Bakersfield, and Los Angeles.

All coach seats reserved except trains 37-38 and 56.

UNION PACIFIC RAILROAD

Table with 12 columns showing train schedules for Union Pacific Railroad. Includes routes like Read Down and Read Up with departure and arrival times.

SPOKANE, PORTLAND AND SEATTLE RAILWAY SYSTEM



CONNECTIONS AT SPOKANE AND PASCO

Table with 12 columns showing train schedules for Spokane and Pasco. Includes routes like Northern Pacific, Great Northern Ry., and Spokane Int'l—Can. Pacific.

Table with 12 columns showing train schedules for Northern Pacific West of Pasco. Includes routes like Portland, Pasco, Kennewick, Prosser, Toppenish, Yakima, and Ellensburg.

SAFETY FIRST—friendliness too!



To CALIFORNIA

The trains of the S. P. & S. Ry., Spokane to Portland connect with Southern Pacific Co. trains at Portland, with coaches, tourist and standard sleeping cars.

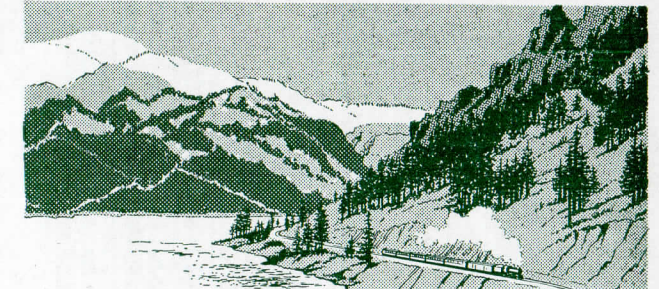
Trains leave Spokane 7:00 A.M. (N. P. Station) and 9:45 P.M. (G. N. Station); arriving Portland, Union Station, 5:08 P.M. and 7:35 A.M. Southern Pacific Co. trains for California schedules on page 8.

Agents will supply fares, limits of tickets and other details.

Coach tickets honored in coaches and reserved seat coaches only; tourist tickets in tourist sleeping cars, reserved seat coaches, or coaches; standard tickets in standard sleeping cars or other equipment.

Consult your home ticket agent for details.

Light face figures denote A. M. time. Bold face figures denote P. M. time. Ar. Arrive. Lv. Leave. f Stop on Signal.



Columbia River and Cascade Range

Between Portland and Spokane

Along the Columbia and Snake Rivers and Through the Heart of the Cascade Range



MILE POSTS ALONG THIS PATH OF THE PADRES

BONNEVILLE DAM

BEACON ROCK

THE DALLES OF THE COLUMBIA

COLUMBIA RIVER GORGE



