







# SPOKANE, PORTLAND AND SEATTLE RAILWAY SYSTEM

OREGON TRUNK RY.  
Pacific Time

## PORTLAND - WISHRAM - PASCO - SPOKANE TRAINS

Eastbound, Read Down

Westbound, Read Up

SPECIAL STOPS	Portland - Wishram - Pasco - Spokane Trains				Spokane, Portland and Seattle Railway		
	No. 2 Daily	No. 2 Daily	No. 4 Daily	Elva. Miles	No. 3 Daily	No. 1 Daily	No. 1 Daily
No. 1. At any station to discharge revenue passengers from east of Spokane.	8.00	8.00	9.00	32 0.0	Lv. PORTLAND ("City of Roses")	Ar. UNION STATION	Ar. EAST ST. JOHNS
At any station west of Pasco to discharge revenue passengers from Spokane.	8.30	8.30	9.30	46 10.0	Lv. VANCOUVER (founded 1825)	Ar. FISHER (World famous prune belt)	Ar. CAMAS (Large paper and pulp mills)
At any station east of Pasco to receive passengers for Vancouver and Portland.	10.09	10.09	11.22	101 75.6	Ar. HOOD (Mt. Hood, 11,225 ft. visible)	Ar. UNDERWOOD (Apple country)	Ar. BINGEN-WHITE SALMON (Mt. Hood)
At any station west of Pasco to receive passengers for Spokane.	10.55	10.55	12.08	166 106.1	Ar. WISHRAM (Mt. Hood visible)	Ar. MARYHILL	Ar. CLIFFS (Mt. Hood, 11,225 ft. visible)
At any station east of Pasco to discharge passengers from Portland or Vancouver.	2.05	4.35	3.58	230.7	Lv. PASCO	Ar. LEVEY	Ar. REDD
Stops to receive passengers made only upon advance arrangements through Agent.	4.01	4.35	5.25	291.4	Lv. PASCO	Ar. WASHUTCUNA	Ar. HOOPER
Stops to discharge passengers made upon application to conductor.	7.10	6.50	8.20	377.5	Lv. PASCO	Ar. SPOKANE	Ar. NOR. PAC. STATION

## PORTLAND - REDMOND - BEND TRAINS

Read Down June 12, 1943

No. 2 Daily	Miles	Spokane, Portland and Seattle Railway	Elevation	No. 1 Daily
8.00	0.0	Lv. PORTLAND	Ar. 32	7.35
No. 102 Daily		Oregon Trunk Ry.		No. 103 Daily
11.40	106.1	Lv. WISHRAM	Ar. 166	3.00
11.57	111.8	Moody	286	f 2.40
12.10	117.7	Kloan	328	f 2.25
12.25	124.1	Lockit	354	f 2.09
12.44	132.5	Dike	508	f 1.50
12.55	136.7	Sinamox	510	f 1.36
f 1.15	146.0	Oakbrook	606	f 1.15
f 1.33	153.8	Sherar	783	f 12.48
f 1.42	156.9	Tuskan	788	f 12.40
f 1.59	160.8	Maupin	852	f 12.29
f 2.20	169.9	Nena	960	f 12.01
f 2.30	173.6	Frieda	1012	f 11.51
f 2.46	179.7	Nathan	1074	f 11.36
f 2.50	181.5	North Jct.	1102	f 11.31
f 3.01	186.4	Kaskela	1203	f 11.18
f 3.16	191.9	South Jct.	1254	f 11.03
f 3.42	200.1	Gateway	1787	f 10.41
f 4.05	205.6	Paxton	2169	f 10.26
f 4.25	211.3	Madras	2458	f 10.10
f 4.42	216.3	Metolius	2517	f 9.55
f 4.57	221.0	Culver	2624	f 9.43
f 5.18	228.1	Opal City	2850	f 9.25
f 5.35	235.6	Terrebonne	2863	f 9.05
f 5.50	238.4	Prineville Jct.	2918	f 8.58
f 6.10	241.1	Redmond	2983	f 8.50
f 6.35	250.2	Deschutes	3572	f 8.15
f 7.00	257.6	Ar. BEND	3618	8.00

**EQUIPMENT BETWEEN PORTLAND and BEND**  
Trains Nos. 2-102 and 1-103. Coaches daily between Portland and Bend (N. A. C.); observation cars daily between Portland and Wishram, A. C. See page 3.

**CONNECTION AT BEND FOR KLAMATH FALLS**  
See schedule of Great Northern Ry. on page 6.

## LYLE - KLICKITAT - GOLDENDALE TRAINS

No. 220 Daily ex. Sat.	Miles	S. P. & S. Ry.	Elevation	No. 221 Daily ex. Sat.
11.40	85.3	Lv. Lyle	Ar. 101	8.10
f 12.05	91.7	Wrights	288	f 7.45
f 12.20	95.6	Pitt	370	f 7.30
12.30	97.8	Lv. Klickitat	Ar. 440	7.20
f 12.45	102.2	Wahkiakus	500	f 7.05
f 1.40	115.6	Warwick	1546	f 6.10
2.00	120.6	Centerville	1586	5.50
2.25	126.9	Ar. Goldendale	Ar. 1610	5.25

Ex. Sat. denotes daily except Saturdays.  
Ex. Sun. denotes daily except Sunday.  
Equipment, coaches.

**For Special Stops on Nos. 1 and 2.** See left column, page 3, and under "References" below.  
References: a Will stop to discharge revenue passengers from Spokane.  
b Will stop on signal to receive revenue passengers for Bingen-White Salmon, Vancouver and Portland.  
c Will stop on signal to receive revenue passengers for Vancouver and Portland.  
f Stop on signal.  
g Will stop on signal to discharge revenue passengers from Portland and Vancouver.  
h Will stop to discharge revenue passengers from Portland, Vancouver and Bingen-White Salmon.  
k Stops daily except Sunday.  
t Telegraph stations. N.A.C. Non air-conditioned. A.C. Air conditioned.

**EQUIPMENT—BETWEEN PORTLAND AND SPOKANE**  
**Over-Night Limited. Trains Nos. 1 and 2.** All regularly assigned equipment is air-conditioned. Observation-club 8 section standard sleeping cars with lounge, buffet, etc., standard 1 drawing room and 8 section, 2 compartment, 1 drawing room sleeping cars, latest type tourist sleeping cars, and coaches with lounges for women and men, and individual, reclining seats. N. A. C. coach between Portland and Bend.  
**Columbia River Express. Day Trains Nos. 3 and 4.** Air-conditioned observation reserved seat coaches, cafe meal service and non air-conditioned coaches between Portland and Pasco, and A. C. equipment of similar character on connecting trains of Nor. Pac. Ry. between Pasco and Spokane, with reserved seat tickets issued locally, and between points east and west of Pasco, seat fare Portland-Spokane, 50c, plus tax.

# SPOKANE, PORTLAND AND SEATTLE RAILWAY SYSTEM



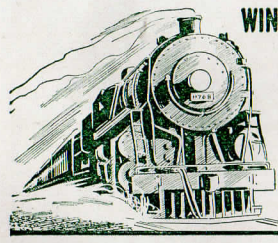
## PORTLAND - ST. HELENS RAINIER - ASTORIA - CLATSOP BEACH TRAINS

Westbound—Read Down

Eastbound—Read Up

No. 21 Daily	Miles	S. P. & S. Ry.	No. 24 Daily
8.00	0.0	Lv. PORTLAND, Union Sta.	Ar. 7.05
8.15	7.3	Linnton	f 6.44
8.38	19.9	Scappoose	f 6.22
f 8.46	24.3	Warren	f 6.14
8.53	27.6	Ar. ST. HELENS (Station)	f 6.09
f 8.57	30.0	Columbia City	f 6.02
f 9.04	33.2	Deer Island	f 5.57
f 9.15	39.4	Goble	f 5.47
f 9.20	42.2	Prescott	f 5.42
9.30	45.8	Ar. RAINIER	f 5.36
10.35		Ar. Longview	Lv. 4.00
8.00		Lv. By Direct Bus 30c	Ar. 6.40
9.30	45.8	Lv. RAINIER	Ar. 5.36
9.50	55.8	Mayger	f 5.18
f 9.54	58.0	Locoda	f 5.14
f 9.58	59.3	Quincy	f 5.11
10.05	62.2	Ar. CLATSKANIE	f 5.05
f 10.14	66.6	Marshland	f 4.55
10.25	71.2	Westport	f 4.46
10.30	73.5	Wauna	f 4.41
f 10.36	76.8	Bradwood	f 4.35
f 10.40	78.4	Clifton	f 4.31
f 10.46	81.7	Aldrich Point	f 4.24
f 10.50	83.3	Brownmead	f 4.20
f 10.55	84.9	Blind Slough	f 4.17
10.59	86.5	Knappa	f 4.15
f 11.05	88.5	Ivy	f 4.10
11.09	90.2	Svensen	f 4.07
f 11.20	95.4	Van Dusen	f 3.57
11.35	99.7	Ar. ASTORIA	Ar. 3.45
f 11.40	99.7	Lv. ASTORIA	Ar. 3.35
f 11.41	100.3	11th Street, Astoria	f 3.34
11.59	105.6	Warrenton	f 3.15
3.8		FT. STEVENS	Freight Service Only
f 12.06	108.3	Clatsop Beach	f 3.08
f 12.09	110.3	Pacific Ocean	f 3.03
f 12.14	112.1	Carnahan	f 2.59
f 12.22	115.7	Gearhart	f 2.50
f 12.24	116.7	Neawanna	f 2.48
12.30	118.0	Ar. SEASIDE	Ar. 2.45

**TRAIN EQUIPMENT**  
Nos. 21 and 24, carry observation-reserved seat coaches and coaches between Portland, Astoria and Seaside.  
Cafe dining service in reserved seat coaches, seat fare 30c between Portland and Astoria, Gearhart and Seaside.



## WINNING THE WAR IS ALL THAT MATTERS!

Today, when America's vast war effort demands that every muscle be strained in the interests of Victory, Railway Express is trying to do its part.



Light face figures denote A. M. time. Bold face figures denote P. M. time.

## OREGON ELECTRIC RY. PORTLAND-SALEM-ALBANY-EUGENE

Miles	Portland - Salem - Albany - Eugene
27.6	Portland
32.1	Beaverton
36.1	Tigard
43.0	Tualatin
49.1	Wilsonville
51.9	Donald
54.5	Broadacres
57.4	West Woodburn
64.1	St. Louis
71.2	Quincy
79.9	Salem
97.8	Orville
124.2	Albany
128.7	Harrisburg
142.8	Junction City
	Eugene

## GREAT NORTHERN RY. BEND, KLAMATH FALLS, BIEBER

Daily Mixed	M.	Gt. Northern Ry.	Daily Mixed
0	15	Lv. Bend	Ar.
5	32	Ar. Lava Jct.	Lv.
10	45	La Pine	Ar.
15	62	Fremont	Ar.
20	68	Crescent	Ar.
25	68	Chemult	Ar.
30	115	Chiloquin	Ar.
35	133	Albany	Ar.
40	144	Klamath Falls	Ar.
45	146	So. Klamath	Ar.
50	159	Merrill	Ar.
55	169	Malin	Ar.
60	210	Scarfaced	Ar.
65	222	Lookout	Ar.
70	234	Ar. Bieber	Lv.

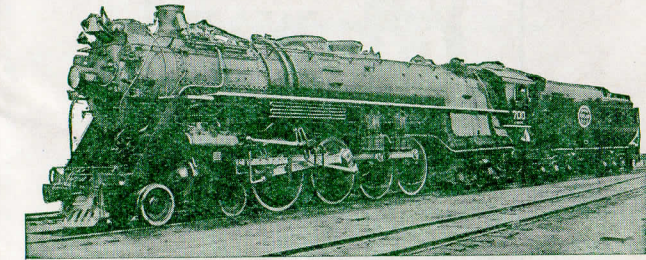
## UNITED RAILWAYS

PORTLAND-NORTH PLAINS-VERNONIA

Miles	Portland - North Plains - Vernonia
0.0	Portland
7.3	10th & Hoyt St. Sta.
11.7	Linnton
15.5	Burlington
17.1	Rockton
19.1	Bowers Jct.
19.1	Helvetia
20.2	Connell
21.9	Lincoln
25.5	North Plains
26.5	Christie
27.5	Wilkesboro
31.8	Banks
34.6	Manning
38.8	Buxton
46.4	Tophill
	McPherson
48.6	Vernonia
57.0	Keasey

## RESPONSIBILITY

Not Responsible—The Spokane, Portland and Seattle Railway Company is not responsible for errors in time tables, inconvenience or damage resulting from delayed trains or failure to make connections; schedules herein are subject to change without notice.



## Giants of the Rails

on the Empire Builder and North Coast Limited

These great, fast, powerful locomotives have recently been placed on the runs of the overnight limited trains of the Spokane, Portland and Seattle Railway between Portland and Spokane, in the through Portland-St. Paul-Chicago service of the famous Empire Builder via the Great Northern Railway and the North Coast Limited via the Northern Pacific Railway.

They embody every feature of superiority in motive power known to the famous Baldwin builder. A few dimensions will be of interest and show something of their size, elements for power and speed.

Length of engine and tender, 107 feet; weight 865,520 lbs.; diameter of driving wheels, 77 inches, boiler, 88 inches; steam pressure, 260 pounds per square inch; tractive power, 69,800 pounds; capacity of tender, 20,000 gallons of water, 6,000 of fuel oil; cylinders, 28 by 31 inches; all axles have roller bearings.

Light face figures denote A. M. time. Bold face figures denote P. M. time. Ar. Arrive. Lv. Leave f Stop on signal. t Telegraph office.

Light face figures denote A. M. time. Bold face figures denote P. M. time. Ar. Arrive. Lv. Leave f Stop on signal.






**SPOKANE, PORTLAND AND SEATTLE RAILWAY SYSTEM**  
CONNECTIONS AT PORTLAND

**PORTLAND - PUGET SOUND - BRITISH COLUMBIA**  
NORTHERN PACIFIC RY. - GREAT NORTHERN RY. - UNION PACIFIC R. R.

Northbound—Read Down				Southbound—Read Up				
Daily	Daily	Daily	Daily	Daily	Daily	Daily	Daily	
11.30	4.00	1.30	8.30	Lv. Portland, Un. Sta. Ar	2.20	5.05	9.30	6.45
12.05	4.25	1.52	9.00	Lv. Vancouver, Wn. Ar	1.50	4.36	9.01	6.15
12.57			9.48	Ar. Kalama Lv	12.56			4.55
1.30	5.13	2.38	10.06	" Kelso-Longview " " "	12.36	3.42	8.02	4.35
1.48			10.22	" Castle Rock " " "	12.17			4.05
2.45	6.06	3.26	11.17	Ar. Chehalis " " "	11.26	2.48	7.06	3.05
3.10	6.21	3.35	11.31	Ar. Centralia " " "	11.15	2.43	6.56	2.53
			12.02	Ar. South Bend " " "			13.15	
			12.02	Ar. East Olympia " " "		2.13	6.27	1.59
5.00	7.45	4.48	1.00	Ar. Tacoma " " "	9.40	1.24	5.40	1.00
† 1.36				Ar. Aberdeen " " "				13.06
† 1.53				Ar. Hoquiam " " "				12.55
k 6.45	k 9.00	k 5.50	u 2.20	Ar. Seattle Lv	k 8.20	k 12.30	u 4.30	k 11.30
8.15	9.30	6.00		Lv. Seattle Ar	8.00		2.15	10.35
9.18	10.44	6.56		Ar. Everett Lv	6.55		1.10	9.39
11.40		9.10		Ar. Bellingham Lv			11.13	7.25
2.05		11.15		Ar. Vancouver, B. C. Lv			9.00	5.15

† Daily except Sunday. b To and from Olympia by bus. k King Street Station. p Stops from Portland and beyond. u Union Station.

**FOR VICTORY**



**BUY UNITED STATES WAR BONDS AND STAMPS**

**SOUTHERN PACIFIC COMPANY**

Southbound, Read Down						Northbound, Read Up					
17	329	15	23	19	M	330	10	24	18	20	
10.00	7.15	7.00	5.20	8.00	0	Lv. Portland Ar	7.55	10.05	1.05	5.45	10.50
11.49	9.30	8.50	6.57	9.55	53	Ar. Salem Lv	5.50	8.05		3.55	8.50
12.45	10.35	9.45	7.40	10.44	80	" Albany " "	4.50	7.18		3.10	8.05
	11.05	11.05	8.35	11.15	91	" b Corvallis b "		6.45		2.35	7.00
1.45	11.42	10.45	8.38	11.55	124	" Eugene " "	3.30	6.05	9.48	2.05	6.43
	7.00				246	" Marshfield " "	7.00				
8.20		5.45	2.50	7.20	318	" Klamath Falls " "		11.10	4.15	7.55	12.10
Oregonian	1.05	West Coast	Cascade Beaver	b 4.58	144	" Cottage Grove " "	2.20				
	3.35			b 7.20	196	" Roseburg " "	12.05				
	7.34			b 10.22	297	" Grants Pass " "	8.15				
	8.55			b 11.27	329	" Medford " "	7.15				
	9.25				342	" Ashland " "	6.30				
b 8.05		6.00	b 12.50	8.05	657	" Sacramento " "	10.20	5.15	7.40	10.40	
9.32	10.18	2.08	10.02	719	" Oakland, 16th St. " "	8.01	4.44	7.30	8.55		
9.40	10.25	2.15	10.10	721	" Oakland Pier " "	7.56	4.35	7.15	8.40		
10.20	10.50	2.50	10.50	724	" San Francisco " "	7.30	4.00	6.30	8.00		
	9.55		9.30	1106	" Los Angeles " "	5.30		8.00	8.00		

b—By Bus. All coach seats reserved in trains 23 and 24 (Beaver) and 51 and 52.

**EQUIPMENT OF TRAINS**

**Train 23-24. Cascade.**—(Air Conditioned). Between Portland and San Francisco. Standard sleeping car with sections, drawing rooms, compartments, bedrooms. Dining car. First class tickets required.

**Train 23-24. Beaver.** (Air Conditioned). Between Portland and San Francisco. Tourist sleeping cars, reclining chair cars and dining car. Chair car seats reserved.

**Train 15-16. West Coast.**—(Air Conditioned). Between Portland and Los Angeles. Standard sleeping car, tourist sleeping car, reclining chair car and dining car.

**Train 17-18. Oregonian.**—(Air Conditioned). Between Portland and San Francisco. Standard sleeping car (sections, drawing rooms, compartments), tourist sleeping car, dining car and reclining chair car.

**Train 19-20. Klamath.**—(Air Conditioned). Between Portland and San Francisco. Standard sleeping cars, tourist sleeping cars, dining car, reclining chair cars and coaches.

**Train 329-330. Rogue River.**—Between Portland and Ashland. Standard A. C. sleeping car, sections and drawing room, lunch car, and coach. Between Portland and Marshfield, N. A. C. tourist sleeping car and coach.

**SAN FRANCISCO—LOS ANGELES—COAST LINE**

38	76	70	72	98	M	37	99	71	69	75	
7.05	9.00	6.30	1.00	8.15	0	Lv. San Francisco Ar	5.35	6.00	6.45	8.45	9.00
8.20	10.03	7.40	2.10	9.08	47	Ar. San Jose Lv	4.25	5.02	5.15	7.50	7.45
3.10	3.00	1.35	10.10	1.19	248	" San Luis Obispo " "	10.30	12.59	9.50	1.10	2.40
	5.58	5.05	2.25	3.35	367	" Santa Barbara " "		10.37	5.10	9.50	11.44
	9.00	8.35	6.45	6.00	471	" Los Angeles Lv	8.15	1.00	6.30	9.00	

**SAN FRANCISCO—LOS ANGELES—VALLEY LINE**


	26	52	58	M	51	57	25	
	5.00	7.30	6.00	0	Lv. San Francisco Ar	9.20	11.20	9.20
	5.55	8.00	6.35	4	" Oakland Pier " "	8.48	10.50	8.45
	11.55	1.30	2.35	206	Ar. Fresno Lv	3.50	4.00	2.45
	2.55	3.55		313	" Bakersfield " "	1.24	11.30	
	9.30	9.30		484	" Los Angeles Lv	8.00	5.00	

Advance reservation of coach seats in trains 98, 99, 51 and 52 necessary.

**UNION PACIFIC RAILROAD**

Read Down			Read Up				
No. 12 Daily	No. 18 Daily	No. 26 Daily	No. 25 Daily	No. 17 Daily	No. 11 Daily		
	8.00	6.30	9.00	Lv. Portland Ar	6.30	7.30	7.35
	9.43	8.09	10.53	Ar. Hood River Lv	4.10	5.30	5.40
	10.20	8.45	11.35	" The Dalles " "	3.25	4.50	5.00
		11.55	3.15	" Pendleton " "	10.30	1.15	
		4.45	7.57	" Baker " "	5.40	7.57	
		8.52	12.25	" Payette " "	3.52	6.18	
		9.07	12.38	" Ontario " "	3.40	6.08	
		10.10	1.45	" Nampa " "	2.30	5.10	
		10.50	2.25	Ar. Boise Lv	1.45	4.35	
		5.15	9.10	Ar. Pocatello Lv	6.40	11.00	
	9.55	1.40	Ar. Ogden Lv	1.10			
	11.30	3.15	Ar. Salt Lake Lv	11.15			
	7.35	2.50	Ar. Cheyenne Lv	1.45	8.45		
	11.15	6.00	Ar. Denver Lv	8.45	5.05		

**CLATSOP BEACH**



**SEASIDE—GEARHART PACIFIC OCEAN**

**ALL-YEAR SEASHORE RESORT**

Surrounded by evergreen forests and a background of mountains, Clatsop Beach has every facility for visitors—golf courses, fishing, amusement places, sea foods, pure water, good hotels, restaurants, cottages, and camps. Along the expanding Columbia River, from Portland to Astoria. Train schedules page 5.

Light face figures denote A. M. time. Bold face figures denote P. M. time. Ar. Arrive. Lv. Leave. f Stop on Signal.



**SPOKANE, PORTLAND AND SEATTLE RAILWAY SYSTEM**  
CONNECTIONS AT SPOKANE AND PASCO

313 Daily	311 Daily	NORTHERN PAC.	312 Daily	314 Daily	347 Daily	NORTHERN PACIFIC	348 Daily	Bus Daily	Bus Daily	GREAT NORTHERN RY.	Bus Daily	Bus Daily	2 Daily	SPOKANE INT'L—CAN. PACIFIC	1 Daily
9.00	8.00	Lv. Portland Ar	7.35	7.35		Walla Walla				Spokane Ar	3.12	7.17	9.00	Lv. Portland Ar	7.35
9.30	8.00	Lv. Spokane Ar	1.00	8.10		Portland Ar	7.35	5.30	8.15	Deer Park Ar	2.20	6.25	11.45	Lv. Spokane (S.I.Ry.) Ar	11.50
9.46	8.16	Marshall Lv	12.42	7.55	8.00	Portland Ar	7.35	6.18	9.03	Chewelah Ar	1.13	5.18	4.22	Ar. Macleod (C.P.R.) Lv	11.00
10.30	8.58	Rosalie Lv	11.55	7.12	4.05	Pasco Ar	9.55	7.29	10.14	Colville Ar	12.30	4.35	5.30	Ar. Lethbridge Lv	9.20
10.51	9.18	Oakdale Lv	11.35	6.54	4.34	Attalia Ar	9.13	8.15	11.00	Colville Ar	12.05	4.05	10.30	Ar. Calgary Lv	7.00
11.18	9.44	Garfield Lv	11.13	6.33	6.25	Walla Walla Lv	7.30	8.15	11.21	Kettle Falls Ar			6.25	Ar. Edmonton Lv	12.10
11.38	10.07	Palouse Lv	10.53	6.12				12.16	10.45	Pullman Lv			10.30	Ar. Medicine Hat Lv	5.35
12.42	11.06	Moscow Lv	10.20	5.40				11.38	11.06	Kendrick Lv			7.15	Ar. Moose Jaw Lv	8.25
1.40	11.58	Kendrick Lv	9.58	5.15				1.49	12.04	Julietta Lv			8.50	Ar. Regina Lv	6.55
2.35	12.55	Lewiston Lv	8.05	3.20				2.35	12.55	Lewiston Lv			6.15	Ar. Winnipeg Lv	9.00

6 Daily	4 Daily	NORTHERN PACIFIC	5 Daily	3 Daily	5 Daily	3 Daily	1 Daily	NORTHERN PACIFIC	2 Daily	6 Daily	4 Daily
8.00	9.00	Lv. Portland Ar	5.08	7.35	8.00	9.00	9.00	Lv. Portland Ar	5.08	5.08	7.35
3.00	4.35	Lv. Pasco Ar	10.42	10.15	10.52	10.25	12.28	Lv. Pasco Ar	3.55	2.40	4.25
	5.25	CConnell Lv	9.53	9.24	11.02	10.39		Kennewick Lv		2.29	4.14
	6.16	Lind Lv	9.09	8.38	12.06	11.41		Prosser Lv		1.32	3.21
5.25	6.44	Ritzville Lv	8.42	8.09	12.53	12.30		Toppenish Lv		12.48	2.37
f 6.01	7.14	Sprague Lv	8.07	7.31	1.30	1.10	2.50	Yakima Lv	1.50	12.15	2.00
6.43	7.50	Cheney Lv	7.30	6.52	2.45	2.30	3.56	Ellensburg Lv	12.42	10.56	12.37

**To CALIFORNIA**

The trains of the S. P. & S. Ry., Spokane to Portland connect with Southern Pacific Co. trains at Portland, with coaches, tourist and standard sleeping cars.

Trains leave Spokane 7:00 A.M. (N. P. Station) and 9:45 P.M. (G. N. Station); arriving Portland, Union Station, 5:08 P.M. and 7:35 A.M. Southern Pacific Co. trains for California schedules on page 8.

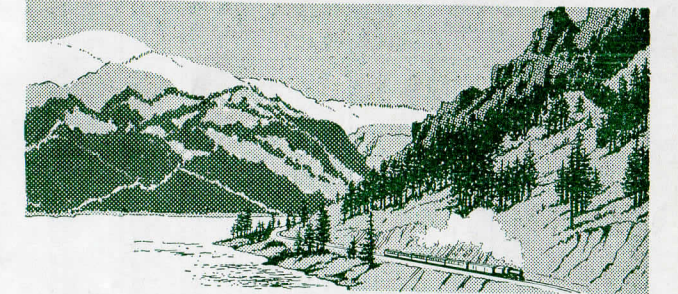
Agents will supply fares, limits of tickets and other details.

Coach tickets honored in coaches and reserved seat coaches only; tourist tickets in tourist sleeping cars, reserved seat coaches, or coaches; standard tickets in standard sleeping cars or other equipment.

Consult your home ticket agent for details.

Light face figures denote A. M. time. Bold face figures denote P. M. time. Ar. Arrive. Lv. Leave. f Stop on Signal.

**SAFETY FIRST—**  
*friendliness too!*



**Columbia River and Cascade Range**  
*Between Portland and Spokane*  
**Along the Columbia and Snake Rivers and Through the Heart of the Cascade Range**

- BONNEVILLE DAM
- BEACON ROCK
- THE DALLES OF THE COLUMBIA
- COLUMBIA RIVER GORGE







# SPOKANE, PORTLAND AND SEATTLE RAILWAY SYSTEM

## Sleeping, Parlor Car and Reserved Seat Fares

For information only. Subject to change without notice.

BETWEEN AND Effective April 1, 1942	PORTLAND		SPOKANE		Table basis for determining charges for Standard Upper Berths, Drawing Rooms and Compartments				
	Seat	Lower Berth Standard	Lower Berth Tourist	Lower Berth Standard	Lower Berth Tourist	Where Lower Berth rate is	Upper Berth rate will be	① Drawing Room rate will be	② Compartment rate will be
<b>Federal Tax Extra</b>									
Astoria..... Ore.	*30								
Bingins..... Mont.		\$ 8.45	\$ 5.65	\$ 5.25	\$ 3.55				
Bingen-W. Salmon Wn.	*20			2.95	2.00				
Boston..... Mass.		25.15	5.10	22.30	4.35	2.35	\$ 1.80	\$ 8.10	\$ 6.95
Bozeman..... Mont.		7.55	5.10	4.35	2.95				
Buffalo..... N. Y.		22.30		19.65		2.65	2.00	9.25	7.95
Butte..... Mont.		6.70	4.50	3.50	2.35	2.95	2.00	10.40	8.10
Camas..... Wash.	*15			3.20	2.15	3.20	2.45	11.55	9.25
Chicago..... Ill.		18.25	12.20	15.35	10.25	3.50	2.65	12.75	9.85
Cincinnati..... Ohio		20.25		17.35		4.35	3.30	16.20	12.20
Cleveland..... Ohio		20.80		18.25		4.65	3.55	16.20	13.35
Denver..... Colo.		12.20		11.30		4.95	3.75	17.35	13.90
Detroit..... Mich.		20.25		17.35		5.25	4.00	18.50	15.05
Duluth..... Minn.		15.35	10.25	12.75	8.50	5.80	4.40	20.80	16.20
Eugene..... Ore.	*80			4.65	3.10	4.65	3.10	21.95	17.35
Fargo..... N. D.		13.60	9.10	10.40	6.95	6.40	4.85	23.10	17.95
Gardiner..... Mont.		8.10		4.95		6.70	5.10	24.30	19.10
Glacier Park..... Mont.		6.40	4.30	3.20	2.15	7.55	5.75	26.60	21.40
Grants Pass..... Ore.		2.95	2.00	6.15	4.10	7.85	5.95	27.75	21.95
Great Falls..... Mont.		8.10		4.65		8.10	6.20	28.90	23.10
Havre..... Mont.		8.10	5.35	4.95	3.30	9.45	7.30	30.05	23.75
Helena..... Mont.		6.70	4.50	3.50	2.35	9.60	7.30	33.50	27.20
Kansas City..... Mo.		15.35		13.35		9.85	7.30	34.65	27.75
Klamath Falls..... Ore.	1.90			6.40	4.30	10.40	7.95	37.00	29.50
Livingston..... Mont.		7.85	5.25	4.65	3.10	11.30	8.60	40.45	31.80
Los Angeles..... Calif.		9.60	6.40	13.05	8.70	12.20	9.25	42.75	34.10
Louisville..... Ky.		20.25		17.35		12.75	9.70	45.05	35.85
Lyle..... Wash.	*20			2.95	2.00	13.05	9.90	46.20	36.45
Medford..... Ore.		2.95	2.00	6.40	4.30	13.35	10.15	47.40	37.60
Minneapolis..... Minn.		15.35	10.25	12.75	8.50	13.60	10.35	48.55	38.15
Missoula..... Mont.		5.80	3.85	2.95	2.00	14.75	11.25	52.00	41.60
New Orleans..... La.		21.95		20.25		15.35	11.70	54.30	43.35
New York..... N. Y.		25.15		22.30		17.35	13.20	61.25	48.55
Oakland..... Calif.		6.40	4.30	9.85	6.60	18.25	13.90	64.70	51.45
Omaha..... Neb.		15.35		12.75		18.85	14.30	65.85	52.60
Pasco..... Wash.	*35			2.35	1.55	19.65	15.00	69.30	55.40
Philadelphia..... Pa.		24.30		21.70		20.00	15.20	70.50	56.05
Pittsburgh..... Pa.		21.70		18.85		20.25	15.40	71.65	56.60
Portland..... Ore.				3.50	2.35	21.70	16.50	76.25	60.70
Roseburg..... Ore.		2.65	1.80	5.25	3.55	21.95	16.75	77.40	61.85
St. Louis..... Mo.		17.35		14.75		22.30	16.95	78.55	62.40
St. Paul..... Minn.		15.35	10.25	12.75	8.50	24.30	18.50	85.50	68.15
Sacramento..... Calif.		6.15	4.10	9.60	6.40	25.15	19.15	88.95	70.50
San Antonio..... Texas		20.00	13.35						
San Francisco..... Calif.		6.40	4.30	9.85	6.60				
Seaside..... Ore.	*30								
Seattle..... Wash.	1.20			2.95	2.00				
Spokane..... Wash.	*50			3.50	2.35				
Stevenson..... Wash.	*20			2.95	2.00				
Tacoma..... Wash.	*90			2.95	2.00				
Vancouver..... Wash.	*15			3.50	2.35				
Washington..... D. C.		24.30		21.70					
Wishram..... Wash.	*25					2.95	2.00		

\* Reserved Seat Coach fares on day trains.

The charge for upper berths in Tourist cars is approximately 76% of the charge made for lower Tourist berth.

① Applies for 2 or more passengers. When occupied by one passenger drawing room rate is 2 1/2 times Standard lower berth rate and compartment is two times Standard lower berth rate.

② Rate for section when lower berth only is occupied will be quoted by ticket agents.

When both lower and upper berths are used, combination of fares will apply.

Through cars not operated in all trains; fare applies for continuous trip via direct connections. A compartment is a private room with lower and upper berths and toilet; a drawing room has a divan berth in addition. Occupancy of a drawing room requires 1 1/2 adult rail tickets, or their equivalent; requirement for compartment, one such ticket between S. P. & S.-N. P.-G. N. and connections, 1 1/10 between certain other lines; requirement for section, one such ticket.

**BAGGAGE IN SLEEPING CARS.**—Hand baggage in sleeping cars is restricted to what may conveniently be placed in berth or at seat occupied by passengers. All baggage should be marked with name and permanent address of owner.

## GENERAL OFFICES

EXECUTIVE, TRAFFIC AND PURCHASING DEPARTMENTS  
American Bank Building  
621 S. W. Morrison Street

## ACCOUNTING AND OPERATING DEPARTMENTS

N. W. Eleventh Avenue and N. W. Hoyt Street  
PORTLAND, OREGON

- C. E. DENNEY**..... President  
**F. J. GAVIN**..... Vice-President  
**M. C. LABERTEW**..... Vice-President and General Manager  
**ROBT. CROSSIE**..... Comptroller  
**A. J. WITCHEL**..... Secretary and Chief Engineer  
**T. L. PADDEN**..... Treasurer  
**G. R. WILLIAMS**..... Purchasing Agent  
**E. H. SHOWALTER**..... Superintendent  
**J. C. MOORE**..... General Freight and Passenger Agent  
**EDWARD BRITTON**..... Assistant General Freight Agent  
**G. L. WILLIAMS**..... Assistant General Passenger Agent  
**KENNETH C. MILLER**..... Industrial, Agricultural and Livestock Agent  
**J. C. DARIES**..... Right of Way and Tax Agent

## Representatives

- ALBANY, ORE.**..... E. V. GRAHAM (Phone M. 291) ... Agt., O. E. Ry. Sta.  
**ASTORIA, ORE.**..... J. C. WRIGHT..... General Agent  
20th and Commercial (Phone 113)  
**BEND, ORE.**..... R. P. JEFFREY (Phone 454) ... Agent, Union Station  
R. A. LAWRENCE (Phone 438) ... Trav. Frt. & Pass. Agt.  
**EUGENE, ORE.**..... S. A. SEXSMITH (Phone 140) ... Agent, O. E. Ry. Sta.  
E. B. NELSON..... Traveling Freight Agent  
**HILLSBORO, ORE.**..... L. SHERMAN (Phone M. 541) ... Agt., O. E. Ry. Sta.  
**JUNCTION CITY, ORE.**..... L. W. MALLORY (Phone M. 382) ... Agt., O. E. Ry. Sta.  
**LOS ANGELES, CALIF.**.....

Great Northern Railway, 918 Associated Realty Bldg., Phone Vandike 1201.  
W. E. MCCORMICK..... General Agent  
S. L. WILLIAMS..... City Passenger Agent  
H. D. HANSCOM..... Trav. Freight & Pass. Agent  
Northern Pacific Railway, 401 Associated Realty Bldg., Phone Trinity 2322  
J. C. SPRACKLIN..... General Agent  
J. E. BEATTY..... City Freight & Pass. Agent  
D. F. WALKER..... Traveling Freight & Passenger Agent  
G. R. LALLY, Gen. Agt., Gt. Nor. Ry., 611 Central Bank Building, Phone Templebar 7672-73.  
T. A. MURPHY, Gen. Agt., Nor. Pac. Ry., 815 Central Bank Building, Phone Glencourt 8717.

**OAKLAND, CAL.**..... A. F. LEE..... General Agent  
Consolidated Ticket Office, S. W. Broadway and Morrison St. Telephone BRy. 5631.  
J. L. MILLER, Ticket Agent, Union Station, Foot of N. W. 6th Avenue, Telephone Broadway 3421.

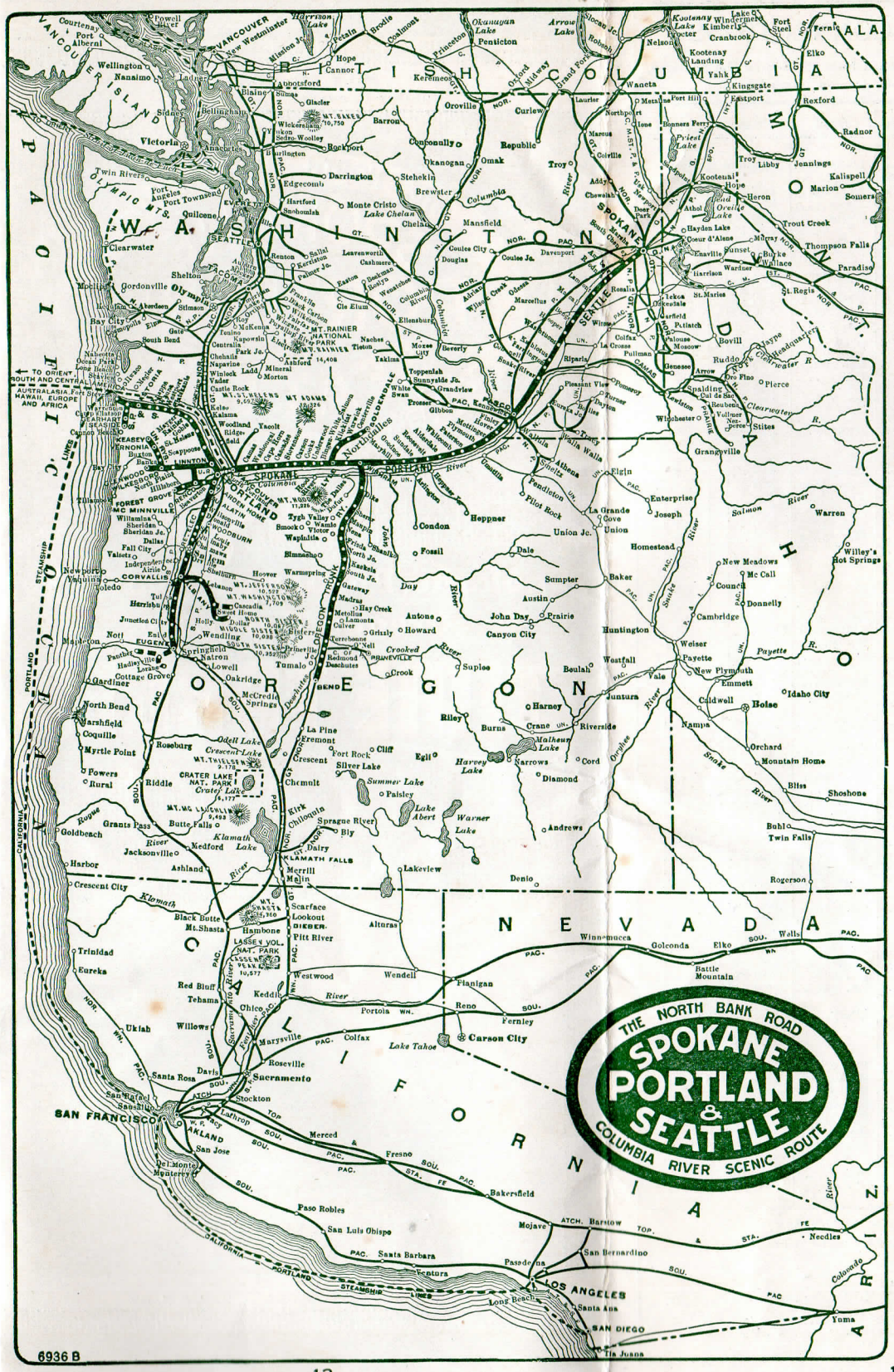
**PORTLAND, ORE.**..... G. F. EHLEN..... General Agent  
R. E. HENDERSHOTT, Trav. Freight and Pass. Agent  
J. T. HARDY..... City Freight Agent  
A. W. PHILLIPS..... City Freight Agent  
C. J. LIVINGSTON..... City Passenger Agent  
H. SHEEDY, Local Freight Agent, N. W. 11th and Hoyt, Phone ATwater 9111.

**REDMOND, ORE.**..... G. W. SEXSMITH (Phone 13) ... Agt., Union Station  
**SACRAMENTO, CAL.**..... H. D. DAY, Gen. Agt., Gt. Nor. Ry., 223 Forum Bldg.  
**ST. HELENS, ORE.**..... M. RUTHERFORD (Phone 58) Agt., S. P. & S. Station  
**SALEM, ORE.**..... J. CONDRA..... (Phone 4763) ... O. E. Ry. Freight Depot  
**SAN FRANCISCO, CAL.**.....

DANIEL TINNEY..... General Agent  
H. E. PETERSEN..... Assistant General Agent  
W. CEDERBERG..... Trav. Freight and Pass. Agt.  
I. T. ORCHARD..... City Ticket Agent  
C. H. GAARDSMOE..... Trav. Freight and Pass. Agent  
A. L. SCOTT..... General Agent, Passenger Dept.  
F. E. HOWELL..... Traveling Passenger Agent  
757-59 Monadnock Bldg. Phone Yukon 1246-7-8.  
G. F. HARDY..... General Freight Agent  
G. A. SORRELL..... General Agent, Freight Dept.  
C. O. BUTLER (Phone 45), Agent, S. P. & S. Ry. Sta.  
H. W. SHIELDS, General Agent, 925 Old National Bank Building, Phone Main 4238.  
R. C. MURPHY, General Agent Passenger Dept. Davenport Hotel, Phone Main 5141.  
E. F. BAIRD, City Passenger and Ticket Agent, Sprague Ave. and Wall St. Phone Main 5321.  
H. W. GREEN..... Ticket Agent, Gt. Nor. Ry. Station

**SEASIDE, ORE.**.....  
**SPOKANE, WASH.**..... H. M. LABERTEW, Agent (Phone 2881), S.P. & S. Ry. Sta.  
R. I. THOMPSON, (Phone 735) ... Passenger Station

**VANCOUVER, WASH.**..... S. P. & S. Ry., Union Station, Foot of Sixth Avenue.  
**PORTLAND, ORE.**..... Northern Pacific Station, Trains Nos. 1 and 2.  
**SPOKANE, WASH.**..... Northern Pacific Station, Nor. Pac. trains Nos. 5 and 4, connecting at Pasco with S. P. & S. trains Nos. 3 and 4.



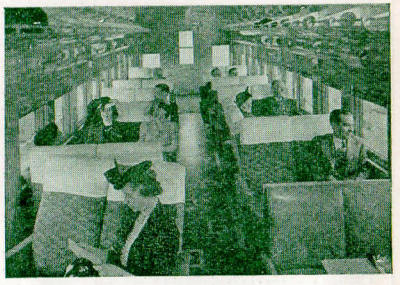
## THE DAY TRIP

Between  
**PORTLAND AND SPOKANE**  
on the  
**COLUMBIA RIVER EXPRESS**

Between Portland and Pasco, via S. P. & S. Ry., and directly connecting trains between Pasco and Spokane via Northern Pacific Ry., with similar service.

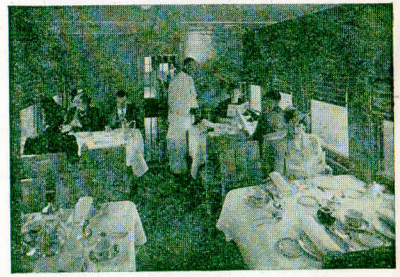
**AIR-CONDITIONED  
RESERVED SEAT COACHES  
WITH CAFE SERVICE**

This is the day train service between these important cities through a fascinating country.



**Reserved Seats**

Reserved seats (50c) are of the latest individual, adjustable type, and passengers may enjoy many club features, including observation section, magazines, card table, writing desk, etc., with the dining room for sixteen guests, offering a generous range of menu at moderate prices.



**Dining Room**

Mt. Hood and others of the Cascade Range, the great Bonneville dam, two crossings of the Columbia river with 220 miles along its north bank, with forests, waterfalls, etc.



**Observation Section**

Schedules and equipment of these trains and of the night limited trains are shown on page 8, and fares on page 10.