

STAGE AND BOAT CONNECTIONS

To points in Oregon and Washington reached from stations on the Spokane, Portland and Seattle Ry. east of Portland and on Oregon Trunk Ry.

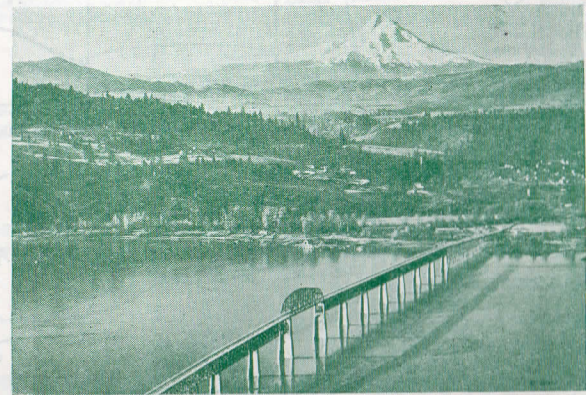
Table with columns: Destination, From, Conveyance, Days, Time, Fare, Free Baggage Lbs. Includes routes to Oregon (Arlington, Ashwood, Burns, etc.) and Washington (Appleton, Battle Ground, etc.).

Note 1-12:35, hourly 7:40 A. M. to 4:40 P. M. incl. 6:40, 9:35 P. M. * Suspends only in case of heavy ice in river. : 7:30 a.m. to 7:15 p.m. † 7:30 a.m. and 4:30 p.m. Ex. Sun.—Except Sundays. xStage driver may be called by passengers from Trains Nos. 1 and 2. Fare \$1.00. The information shown above is prepared from the best data obtainable, but it is subject to change without notice and neither service nor rates are guaranteed.



Spokane, Portland and Seattle Ry. Oregon Trunk Ry. Oregon Electric Ry. United Railways Co.

TIME TABLES



Columbia River and Mount Hood, 11,225 feet, from Bingen-White Salmon S. P. & S. Ry.

SUBJECT TO CHANGE WITHOUT NOTICE

SPOKANE, PORTLAND AND SEATTLE RAILWAY SYSTEM



TRAIN SERVICE—BETWEEN PORTLAND, SPOKANE AND THE EAST

VIA GREAT NORTHERN RY.

Table for VIA GREAT NORTHERN RY. with columns: Eastbound, Read Down and Westbound, Read Up. Includes train numbers, times, and distances for routes like Spokane, Portland and Seattle Railway and Great Northern Ry.

xStops June 15 to Sept. 15. †Except Sunday. h Stops to discharge passengers from west of Spokane.

VIA NORTHERN PACIFIC RY.

Table for VIA NORTHERN PACIFIC RY. with columns: Eastbound, Read Down and Westbound, Read Up. Includes train numbers, times, and distances for routes like Spokane, Portland and Seattle Railway and Northern Pacific Ry.

z Motor. *Service June 20-September 13.

EASTBOUND EQUIPMENT No. 2. Empire Builder.—AIR CONDITIONED. Observation club car service with barber, valet, bath, library, fountain, radio, etc., standard 8 section, 2 compartment, 1 drawing room, sleeping car, and latest type tourist sleeping car Portland to Chicago. Standard 12 section, 1 drawing room sleeping car Portland to Spokane; standard sleeping cars Shelby to Denver, Billings to Kansas City. Dining car service Spokane to Chicago and Billings to Kansas City and St. Louis. De luxe coach, Portland to Spokane (free pillows), Spokane to Chicago. Coach, Shelby to Billings, and reclining chair car Billings to Kansas City. Observation lounge car, sleeping car and coach St. Joseph to St. Louis. No. 2-28. Observation Club Car, with barber, valet, bath, library, fountain, radio, etc. Standard and latest type tourist sleeping car and coaches (all air conditioned) Portland to Spokane, and coaches Spokane to Havre. (No. 28 handles coach passengers only east of Spokane.) WESTBOUND No. 1. Empire Builder.—AIR CONDITIONED. Observation club car service with barber, valet, bath, library, fountain, radio, etc., standard 8 section, 2 compartment, 1 drawing room, sleeping car and latest type tourist sleeping car Chicago to Portland. Standard 12 section, 1 drawing room sleeping car Spokane to Portland. Dining car Chicago to Spokane. De luxe coaches Chicago to Spokane and Spokane to Portland. Standard sleeping cars Denver to Shelby, Kansas City to Billings, St. Louis to St. Joseph. Coach or reclining chair car St. Louis to St. Joseph, Kansas City to Billings. Coach Billings to Shelby. Dining car service St. Louis to Billings. No. 27-1. Coaches Havre to Spokane, and air conditioned observation club car with barber, valet, bath, library, fountain, radio, etc. Standard 12 section, 1 drawing room, sleeping car, latest type tourist sleeping car, and de luxe coaches, with free pillows, Spokane to Portland. (No. 27 handles coach passengers only east of Spokane.)

EASTBOUND EQUIPMENT No. 2. North Coast Limited.—AIR CONDITIONED. Observation club car service with barber, valet, bath, fountain, library, radio, etc., standard 10 section, 1 compartment, 1 drawing room sleeping car, and latest type tourist sleeping car Portland to Chicago via Pasco. De luxe coach Portland to St. Paul via Pasco, Spokane to Chicago, with porter service (free pillows Portland to Spokane). Standard sleeping cars Spokane to Kansas City, and Edgemont to Denver. Reclining chair car Billings to Kansas City; coach St. Joseph to St. Louis. Observation sleeping car Billings to Denver. Dining car service Spokane to Chicago, and Billings to Kansas City and St. Louis. No. 4-4. Columbia River Express.—Alaskan.—Observation, cafe, reserved seat coach (individual chairs, 50c) and coaches Portland to Spokane; tourist and standard sleeping cars, cafe car dining service and coaches Spokane to St. Paul. WESTBOUND No. 1. North Coast Limited.—AIR CONDITIONED. Observation club car service with barber, valet, bath, fountain, library, radio, etc., standard 10 section, 1 compartment, 1 drawing room sleeping car, latest type tourist sleeping car Chicago to Portland via Pasco. De luxe coach with porter service Chicago to Spokane, St. Paul to Portland via Pasco (free pillows Spokane to Chicago). Dining car Chicago to Spokane. Standard 10 section, 1 compartment, 1 drawing room sleeping car Kansas City to Spokane (on N. P. No. 3 Billings to Butte). Standard sleeping cars Denver to Edgemont. Lounge car St. Louis to St. Joseph. Chair cars and dining cars St. Louis to St. Joseph and Kansas City to Billings. No. 3-1. Alaskan.—Standard 10 section, 1 compartment, 1 drawing room sleeping car (air conditioned) Kansas City to Spokane (on N. P. No. 1 from Butte), reclining chair car (air conditioned) Kansas City to Billings. Cafe car, tourist and standard sleeping cars and coaches St. Paul to Spokane. Dining car (air conditioned) Kansas City to Billings. Observation lounge car St. Louis to St. Joseph. Connects with No. 1 at Spokane for Portland. See above.

Light face figures denote A. M. time. Dark face figures denote P. M. time. Ar. Arrive. Lv. Leave.



SPOKANE, PORTLAND AND SEATTLE RAILWAY SYSTEM OREGON TRUNK RY.

PORTLAND - WISHRAM - PASCO - SPOKANE TRAINS

Table with columns for train numbers (No. 4, No. 2, No. 1), direction (Eastbound, Westbound), and stations (Portland, Wishram, Pasco, Spokane). Includes times and mileages.

PORTLAND - REDMOND - BEND TRAINS

Table with columns for train numbers (No. 2, No. 102, No. 1), direction (Read Down, Read Up), and stations (Portland, Redmond, Bend). Includes times and mileages.

EQUIPMENT-BETWEEN PORTLAND AND SPOKANE. Over-Night Limited. Trains Nos. 1 and 2. Every regularly assigned car air-conditioned. Observation-club cars with barber, bath, valet, periodicals, fountain, radio, etc.

SPOKANE, PORTLAND AND SEATTLE RAILWAY SYSTEM



PORTLAND - ST. HELENS ASTORIA - CLATSOP BEACH TRAINS

Table with columns for train numbers (No. 23, No. 21, No. 22, No. 24), direction (Westbound, Eastbound), and stations (Portland, St. Helens, Astoria, Clatsop Beach). Includes times and mileages.

TRAIN EQUIPMENT. Nos. 21 and 24 carry observation-parlor-cafe cars, coaches and smoking cars between Portland, Astoria and Seaside. Nos. 23 and 22 carry coaches and smoking cars daily.

LOWER COLUMBIA RIVER MOTOR STAGES. Superior motor stage service is maintained along the wonderful, scenic Lower Columbia River Highway by the S. P. & S. Transportation Co. between Portland, St. Helens, Rainier, Astoria, Gearhart and Seaside.

OREGON ELECTRIC RY. PORTLAND-SALEM-ALBANY-EUGENE

Table with columns for miles, stations (Portland, Salem, Albany, Eugene), and freight service only.

GREAT NORTHERN RY. BEND, KLAMATH FALLS, BIBBER

Table with columns for daily mix, miles, stations (Bend, Klamath Falls, Bieber), and freight service only.

Low Round Trip Fares East All Winter

Table showing low round trip fares for Chicago, Milwaukee, St. Paul, New York, Atlanta, Boston, Cincinnati, New Orleans, Philadelphia, St. Louis, and Washington.

UNITED RAILWAYS PORTLAND-NORTH PLAINS-VERNONIA

Table with columns for miles, stations (Portland, North Plains, Vernonia), and freight service only.

