



Cape Horn on the Columbia River



OCTOBER 27, 1963  
Subject to change without notice



*The Northwest's Own Railway*

**THROUGH SERVICE**

VIA

NORTH COAST  
LIMITED

EMPIRE  
BUILDER



**TIME TABLES**

*Standard Time*

TRAVEL THE  
COLUMBIA RIVER  
SCENIC ROUTE  
THROUGH THE  
CASCADE RANGE

OCTOBER 27, 1963  
Subject to change without notice



*The Northwest's Own Railway*

**THROUGH SERVICE**

VIA

NORTH COAST  
LIMITED

EMPIRE  
BUILDER



**TIME TABLES**

*Standard Time*

TRAVEL THE  
COLUMBIA RIVER  
SCENIC ROUTE  
THROUGH THE  
CASCADE RANGE



# SPOKANE, PORTLAND AND SEATTLE RAILWAY SYSTEM

S. P. & S. RY.—OREGON TRUNK RY.—OREGON ELECTRIC RY.—(Subsidiaries of Northern Pacific and Great Northern Railways)

## TRANSCONTINENTAL TRAIN SERVICE—BETWEEN PORTLAND, PASCO AND EAST

### SPOKANE, PORTLAND AND SEATTLE, NORTHERN PACIFIC AND CHICAGO, BURLINGTON AND QUINCY RAILWAYS

West Bound, Read Down			Eastbound, Read Up		
Daily The Mainstreeter C.B. & Q. No. 47	Daily North Coast Ltd. No. 25	Chicago, Burlington and Quincy Railway (Central Time)	Mil. Coast f'm P't No. 26	Daily North Coast Ltd. No. 26	Daily The Mainstreeter C.B. & Q. No. 48
10:30	12:10	Lv Chicago (Union Station).....Ar	2327	2:00	7:55
11:11	12:47	Lv Aurora.....Ar	2289	1:15	7:09
1:21	2:20	Lv Savanna.....Ar	2182	11:39	4:45
4:22	4:35	" LaCrosse.....Ar	2030	9:21	1:59
6:55	6:55	Ar St. Paul (Union Station).....Lv	1900	7:15	11:15
<b>Vista-Dome North Coast Limited</b>					
<b>N.P. 1</b>			<b>N.P. 2</b>		
10:20	7:20	Lv St. Paul (Union Station).....Ar	1900	6:40	10:20
11:15	7:55	Lv Minneapolis (Hen. Av. Stn.)Ar	1890	6:10	9:47
<b>The Mainstreeter</b>					
6:05	6:05	Lv Duluth.....Ar	1881	7:05	10:40
6:16	6:16	" Superior.....Ar	1877	6:50	6:50
<b>Vista-Dome North Coast Limited</b>					
<b>N.P. 3</b>			<b>N.P. 4</b>		
2:16	11:53	Lv Staples.....Ar	1733	3:44	6:55
5:06	12:04	" Fargo.....Ar	1622	1:42	8:25
8:11	1:50	" Jamestown.....Ar	1530	12:06	2:22
10:59	3:25	" Bismarck.....Ar	1428	10:20	12:42
11:30	2:57	" Mandan (Mountain Time).....Ar	1423	9:04	11:12
	4:45	" Dickinson.....Ar	1322	7:16	8:35
	6:44	" Glendive.....Ar	1217	5:14	5:42
	8:03	" Miles City.....Ar	1138	3:48	4:09
	9:05	" Forsyth.....Ar	1093	2:56	3:03
	10:58	Lv Billings.....Ar	991	1:06	12:44
<b>The Mainstreeter</b>					
	1:07	Lv Livingston.....Ar	875	10:56	10:16
	1:54	" Bozeman.....Ar	851	10:11	9:24
	4:25	" Butte.....Ar	756	7:40	9:20
	4:40	" Helena.....Ar	753	7:35	6:30
	5:25	" Garrison.....Ar	704	6:29	4:35
	6:45	" Missoula.....Ar	636	5:08	2:55
	7:28	" Paradise (Pacific Time).....Ar	565	2:17	12:01
		" Sandpoint.....Ar	446		9:36
		" Athol.....Ar	418		78:57
		Ar Spokane (N.P. Station).....Lv	378	10:45	8:15
<b>BUS</b>					
	8:00				
	9:08				
	11:50				
	11:47				
	1:49				
	3:39				
	4:38				
	8:12				
	9:00				
	10:20				
<b>Vista-Dome North Coast Limited</b>					
	8:48	Lv Spokane (N.P. Station).....Ar	378	10:30	7:46
	11:51	Ar Pasco.....Ar	231	7:50	4:45
<b>Spokane, Portland and Seattle Railway</b>					
	12:55	Lv Pasco.....Ar	231	7:05	2:00
	3:05	Ar Wishram.....Ar	106	5:00	11:53
	5:05	" Vancouver.....Ar	10	3:22	10:10
	5:45	Ar Portland (Union Station).....Lv	0	3:00	9:45

3-21-43	29	C.B. & Q. Connections at Billings for Denver & Mo. River Points	30	42-20-12
8:45		Lv St. Louis (Wab.).....Ar		9:45
4:45		Lv Kansas City (CB & Q).....Ar		12:15
6:15		Lv St. Joseph.....Ar		10:48
10:55		Lv Omaha.....Ar		7:50
12:25		Lv Lincoln.....Ar		6:30
7:30		Ar Billings.....Lv		10:55
	9:40	Lv Denver.....Ar		7:35
	5:00	Ar Billings.....Lv		1:30

a—Passengers not carried locally between Aurora and Chicago.

① Arrive ② Leave daily except Sunday.

③ Leave St. Paul daily except Saturday.

④ Bus from Logan. ⑤ Bus from Garrison.

### EQUIPMENT

#### VISTA-DOME NORTH COAST LIMITED BETWEEN CHICAGO AND PORTLAND

All Lightweight Equipment

S. P. & S. 1-2, N. P. 25-26, C. B. & Q. 25-26

**STANDARD SLEEPER-CLUB-LOUNGE CAR**—With 6 roomettes, 3 double bedrooms. Between Pasco and Portland. (Car 10 westbound, Car 20 eastbound.)

**OBSERVATION LOUNGE-SLEEPING CAR**—Between Chicago and Pasco. Four double bedrooms, 1 compartment, spacious lounge, radio, library, writing desk. Buffet service. (259 westbound, 269 eastbound.)

**STANDARD SLEEPING CAR**—Between Chicago and Portland. Newest type all-room car. 4 double bedrooms, 6 roomettes, 8 duplex roomettes. (257 westbound, 267 eastbound.)

**VISTA-DOME COACH**—Between Chicago and Portland. Chaise lounge "sleepy hollow" seats with leg rests for reclining full length. (C252 westbound, C262 eastbound). Seats reserved in advance. No extra charge.

**LEWIS & CLARK TRAVELLER'S REST BUFFET-LOUNGE CAR**—Between Chicago and Pasco. Select and a la carte meals, snacks and beverages, magazines, lounge section.

**DINING CAR SERVICE**—Between Chicago and Portland. Club breakfasts, \$1.80 to \$2.35; Table d'hote dinner, \$3.40; Table d'hote luncheon, \$3.00. Special plate luncheons and dinners, \$2.60. Also a la carte service.

**STEWARDESS NURSE SERVICE**—A Stewardess, who is also a registered nurse, is a member of the train personnel between Chicago and Pasco.

**TICKETS**—All classes of regular and reduced rate rail tickets will be honored for passage on the North Coast Limited except during period June 1st through September 30th and December 1st through June 15th each year half rate tickets will not be honored.

### THE MAINSTREETER

#### BETWEEN CHICAGO AND PORTLAND

S. P. & S. 3-4, N. P. 1-2, C. B. & Q. 47-48

**STANDARD SLEEPING CAR**—Between Chicago and Spokane 8 Duplex Roomettes, 3 Double Bedrooms, 1 Compartment and 6 Roomettes. (105 westbound, 205 eastbound.)

**DINING CAR SERVICE**—Between St. Paul and Spokane.

**DELUXE RECLINING SEAT COACHES**—Between Chicago and Pasco. Between Pasco and Portland. Between Spokane and Portland.

# SPOKANE, PORTLAND AND SEATTLE RAILWAY SYSTEM

S. P. & S. RY.—OREGON TRUNK RY.—OREGON ELECTRIC RY.—(Subsidiaries of Northern Pacific and Great Northern Railways)

## TRANSCONTINENTAL TRAIN SERVICE—BETWEEN PORTLAND, SPOKANE AND EAST

### VIA CHICAGO, BURLINGTON & QUINCY AND GREAT NORTHERN SPOKANE, PORTLAND AND SEATTLE RAILWAYS

Westbound, Read Down			Eastbound, Read Up			
Daily Western Star No. 47	Daily Empire Builder No. 31	Chicago, Burlington and Quincy Railroad (Central Time)	Miles from Portland	Daily Empire Builder No. 32	Daily Western Star No. 24	Daily No. 48
10:30	2:30	Lv Chicago (Un. Stn.).....Ar	2260	2:00	10:40	7:55
11:11	③ 3:08	" Aurora.....Ar	2222	① 1:15	9:57	7:07
1:21	4:44	" Savanna.....Ar	2115	11:39	8:17	4:45
4:22	6:54	" LaCrosse.....Ar	1963	9:21	6:58	1:59
7:25	9:15	Ar St. Paul (Un. Stn.).....Lv	1833	7:15	4:00	11:15
<b>Great Northern Ry.</b>						
No. 3	No. 27	Lv St. Paul (Un. Stn.).....Ar	1833	6:45	3:30	8:30
8:15	9:30	" Minneapolis (GN Stn.).....Ar	1822	6:15	3:00	8:01
8:40	10:05	Lv Willmar.....Ar	1731	4:14		
	11:50	" Breckenridge.....Ar	1618	2:15		
	1:50	" St. Cloud.....Ar			1:28	6:40
9:53		" Fergus Falls.....Ar			11:18	4:29
11:42		" Fargo.....Ar	1571	1:15	10:12	3:10
12:55	2:55	" Grand Forks.....Ar	1447			1:35
2:15		" New Rockford.....Ar	1438	11:01	8:07	
	5:10	Ar Minot.....Lv	1338	9:15	6:15	9:30
	6:45	Ar Williston (Central Time) Lv	1218	6:40	3:30	
	9:25	Lv Williston (Mountain " )Ar	1218	5:30	2:20	
	8:05	" Glasgow.....Ar	1062	2:40	11:26	
	11:06	" Havre.....Ar	909	12:01	8:35	
	3:00					
	⑥ 6:20	Ar Great Falls.....Lv	903	⑧ 5:50	⑤ 5:10	
		Lv Great Falls.....Ar	903	④ 4:20		
		Lv Shelby.....Ar	804	9:55	6:28	
	5:16	" Cut Bank.....Ar	780	9:25	5:55	
	5:50	" Glacier Park.....Ar	733		4:47	
	6:55	" Belton.....Ar	676		2:55	
	8:40	" Columbia Falls.....Ar	661		2:30	
	9:08					
	⑧ 8:45	Lv Kalispell.....Ar	676	④ 6:50	② 5:50	
		Lv Whitefish.....Ar	653	6:05	2:05	
	9:30	" Libby.....Ar	537		11:32	
	11:58	Ar Troy (Mountain Time) Lv	519	3:25	11:05	
	12:20	Lv Troy (Pacific Time).....Ar	519	2:25	10:00	
	11:25	" Bonner's Ferry.....Ar	488		9:09	
	12:14	Lv Sandpoint.....Ar	454		8:31	
	1:00	Ar Spokane (GN Stn.).....Lv	379	11:10	6:45	
	2:45					
<b>Spokane, Portland and Seattle Railway</b>						
No. 3	No. 1	Lv Spokane (GN Stn.).....Ar	379	10:00	5:45	
9:40	11:50	" Pasco.....Lv	231	7:20	2:30	
12:55	2:40	" Wishram.....Lv	106	5:00	11:53	
3:05	4:45	" Vancouver.....Ar	10	3:22	10:10	
5:05	6:35	Ar Portland (Un. Stn.).....Lv	0	3:00	9:45	
5:45	7:00					

### THE WESTERN STAR (Lightweight Streamlined Equipment)

#### CHICAGO-PORTLAND NO EXTRA FARE

CB&Q, 47-48, GN 27-28, SP&S 3-4

#### ALL CLASSES OF TICKETS HONORED

**Standard Sleeping Cars** offering modern Pullman accommodations between Chicago, St. Paul and Spokane, one car containing 16 Duplex Roomettes and 4 Double Bedrooms. Double Bedrooms are connecting and may be sold ensuite.

**Streamlined Day-Nite Coaches** between Chicago and Spokane. Deluxe coaches between Spokane and Portland.

**Reserved Seat Coaches** (Daynite type with leg rests) between Chicago and Spokane, between Spokane and Portland June 12th thru September 12th for revenue passengers only.

**Coffee Shop Service** between St. Paul and Spokane.

① Passengers not carried locally between Aurora and Chicago. c—No. 31 stops at Glasgow to discharge revenue passengers from Minot and East and to receive revenue passengers for Spokane and West where No. 1 is scheduled to stop. d—No. 32 stops at Glasgow to discharge revenue passengers from Spokane and West and to receive revenue passengers for Minot and East where No. 2 is scheduled to stop. e—No. 31 stops at Cut Bank to discharge revenue passengers from Williston and East and to receive revenue passengers for scheduled stops Spokane and West. f—No. 32 stops at Cut Bank to discharge revenue passengers from Spokane and West and to receive revenue passengers for scheduled stops Williston and East. ④ Bus service, rail tickets honored. ⑤ Via train 3 from Havre. ⑥ Via train 4 to Havre.





# SPOKANE, PORTLAND AND SEATTLE RAILWAY SYSTEM

S. P. & S. RY. - OREGON TRUNK RY. - OREGON ELECTRIC RY. - (Subsidiaries of Northern Pacific and Great Northern Railways)

## PORTLAND - WISHRAM - PASCO - SPOKANE TRAINS

Westbound, Read Down

Eastbound, Read Up

Table with columns for SPS No. 3, NP 1, NP No. 25, SPS No. 1, Ele. vs., Spokane, Portland and Seattle Railway, Miles from Portland, SPS No. 2, NP No. 26, SPS 4, SPS No. 4, SPECIAL STOPS, and SPS No. 2, NP No. 26, SPS 4, SPS No. 4. Includes train numbers, times, and station names like Spokane, Portland, Wishram, Pasco, and Vancouver.

FOR THROUGH SERVICE AND CONSIST OF ALL TRAINS, SEE PRECEDING PAGES 2 and 3.

### A TRANS-CONTINENTAL SYSTEM OF RAILWAYS THROUGH AMERICA'S WONDERLAND

Traversing the northern states between the Pacific Northwest and Chicago presents a veritable wonderland offering passengers a splendid variety of ever-changing scenery. Over these lines, between Portland and Chicago, are operated four of America's famous trains, the Streamlined Empire Builder and the Streamlined Western Star, via S.P.&S. Spokane, G.N. St. Paul, C.B.&Q. Chicago, and the Streamlined Vista Dome North Coast Limited and The Streamlined Mainstreeter via S.P.&S. Pasco, N.P. St. Paul and C.B.&Q. Chicago where connections are made to all points east and south. These trains provide passengers with every feature of modern railway travel for their comfort, and pleasure.

STANDARD TIME Light face figures denote A.M. time. Bold face figures denote P.M. time. Ar. Arrive Lv. Leave. f Stop on Signal. t Telegraph Office.



# SPOKANE, PORTLAND AND SEATTLE RAILWAY SYSTEM

S. P. & S. RY. - OREGON TRUNK RY. - OREGON ELECTRIC RY. - (Subsidiaries of Northern Pacific and Great Northern Railways)

## PORTLAND - REDMOND - BEND TRAINS

Read Down

Read Up

Table with columns for No. 105, No. 103, Oregon Trunk Ry., Miles from Portland, No. 102, and No. 4. Lists train numbers, times, and stations like Bend, Deschutes, Redmond, Prineville, etc.

EQUIPMENT BETWEEN WISHRAM and BEND No Leg Rest - Non Air Conditioned Coach

RAIL TRAVEL CREDIT CARD PLAN permits purchase of Rail and Pullman tickets from any S. P. & S. Ry. Co. agent on Credit by securing a Credit Card from the Rail Travel Credit Agency, Room 436 Union Station, Chicago, Ill.

"DRIVURSELF" RAIL-AUTO SERVICE provides a new automobile at your destination or stop over point. Ask the agent for further details on any of the above plans.

### YOUR ROOM'S READY

... when you wire ahead!



Western Union Hotel Reservation Service is the fast, convenient, inexpensive way to make and confirm the accommodations you want... where you want them. WESTERN UNION

STANDARD TIME Light face figures denote A.M. time. Bold face figures denote P.M. time. Ar. Arrive. Lv. Leave. f Stop on Signal. t Telegraph Office.

### SAVE MONEY ON HALF-FARE FAMILY TRAVEL PLAN!

Take Advantage of Our Family Fares.

ONE-WAY TRAVEL—Head of family pays regular one-way fare, first class or coach, other parent and children, 12 through 21, each pay half fare. Children 5 through 11, pay one-quarter fare. Children under five are carried free.

ROUND-TRIP TRAVEL—Head of family pays regular round trip fare, first class or coach, other parent and children, 12 through 21, each pay one-way fare for the round trip. Children, 5 through 11, pay half of the one-way fare for round trip. Children under five are carried free.

For details consult any Spokane, Portland and Seattle Railway travel representative.

### PACIFIC TRAILWAYS

Table with columns for Read Down, Read Up, Dly, Dly., Lv, Ar, and times. Lists routes between Portland and Bend.

Rail tickets routed via OT - S. P. & S. Railways from or to Central Oregon points will be honored to or from Portland, Oregon by the Mt. Hood Stages (Pacific Trailways). Ask agent for details.

### FREIGHT SERVICE

Route your freight shipments via the Spokane, Portland and Seattle Railway for fast and dependable service—between Portland, Astoria, Pasco, Spokane, Yakima, Walla Walla, Lewiston, Eugene, Bend and all points east and south.

Let Us Handle Your Transportation Problems

### FREIGHT SERVICE ONLY Portland - St. Helens - Astoria

Table with columns for Miles, STATIONS, and times. Lists stations like Portland, Linnton, Scappoose, St. Helens, etc.

### HAMMOND BRANCH

Table with columns for Miles, STATIONS, and times. Lists stations like Warrenton, Flavel, Hammond.

### FREIGHT SERVICE ONLY

is operated on the following Branches S. P. & S. Railway

Table with columns for Miles, STATIONS. Lists stations like Lyle, Pitt, Klilckitat, etc.

### VERNONIA BRANCH

Table with columns for Miles, STATIONS. Lists stations like Portland, Linnton, Burlington, etc.

### Oregon Electric Railway

### PORTLAND-SALEM-ALBANY-EUGENE LINE

Table with columns for Miles, STATIONS. Lists stations like Portland, Forest Grove, Beaverton, etc.

### FOREST GROVE BRANCH

Table with columns for Miles, STATIONS. Lists stations like Forest Grove, Orenco, Hillsboro, etc.

### SANTIAM BRANCH

Table with columns for Miles, STATIONS. Lists stations like Albany Yard, Froman, Fry, etc.



SPOKANE, PORTLAND AND SEATTLE RAILWAY SYSTEM

CONNECTIONS AT PORTLAND

S. P. & S. RY. - OREGON TRUNK RY. - OREGON ELECTRIC RY. - (Subsidiaries of Northern Pacific and Great Northern Railways)

PORTLAND - PUGET SOUND - BRITISH COLUMBIA

Northern Pacific Ry. - Great Northern Ry. - Union Pacific R.R.

Table with columns for Northbound-Read Down and Southbound-Read Up, listing train numbers and times for routes to Seattle, Vancouver, and Tacoma.

b-To and from Olympia by bus. k-King Street Station. u-Union Station. v-No connecting bus service between East Olympia and Olympia.

EQUIPMENT OF TRAINS

Trains 9-10, Shasta Daylight-Streamlined Air Conditioned Train-Parlor Obs. Reclining Chair Cars between Portland and San Francisco. Vending machine car. All seats reserved. Train 58 will take transfers from No. 9 at Martinez. Train 57 will make transfers to No. 10 at Martinez.

SOUTHERN PACIFIC COMPANY

Table with columns for Southbound-Read Down and Northbound-Read Up, listing train numbers and times for routes to Eugene, Klamath Falls, Redding, and Los Angeles.

(a)-Via P.G. Lines Bus. From Davis. Operates on tri-weekly schedule southbound from Portland on Mondays, Thursdays and Saturdays; northbound from San Francisco on Sundays, Wednesdays and Fridays during period Sept. 14 through Dec. 15, thence daily through Jan. 12; tri-weekly through May 28, daily through Sept. 12.

Train 11-12, Cascade-Streamlined, Air Conditioned. Between Portland and San Francisco. Standard sleeping cars with drawing rooms, compartments, bedrooms, roomettes, lounge and dining car. Reserved seat chair car. Train 19-20, Passenger-(Air Conditioned). Between Portland and San Francisco. Chair car only. No meal service.

Table for Great Northern Ry. Bend, Klamath Falls Bieber. Lists freight service times and distances for various routes.

MARK YOUR BAGGAGE. All baggage, whether checked or carried with you, should be plainly marked with your name and permanent address. This will insure prompt recovery should it become lost or go astray. JEWELRY, CURRENCY, VALUABLE PAPERS and LIQUIDS should not be placed in baggage intended for checking.

Table for SAN FRANCISCO-LOS ANGELES-COAST LINE and SAN FRANCISCO-LOS ANGELES-VALLEY LINE, listing train numbers and times.

Table for UNION PACIFIC RAILROAD, listing train numbers and times for routes to Portland, Hood River, The Dalles, Pendleton, Baker, Payette, Ontario, Nampa, Boise, Pocatello, Ogden, Salt Lake, Cheyenne, and Denver.

STANDARD TIME. Light face figures denote A.M. time. Bold face figures denote P.M. time. Ar.-Arrive. Lv.-Leave. f-Stop on Signal.



SPOKANE, PORTLAND AND SEATTLE RAILWAY SYSTEM

S. P. & S. RY. - OREGON TRUNK RY. - OREGON ELECTRIC RY. - (Subsidiaries of Northern Pacific and Great Northern Railways)

Sleeping, Parlor Car and Reserved Seat Fares

Federal Tax Extra

For information only. Subject to change without notice.

Table showing fares between various cities (Portland, Spokane, Minneapolis, St. Paul, etc.) for Parlor Car, Lower Berth, and Standard fares.

© Railroad Owned Cars.

RATES FOR SLEEPING CAR ACCOMMODATIONS

Table showing rates for sleeping car accommodations including Duplex Single Room, Duplex Roomette, Bedroom, Bedroom Suite, Compartment, and Drawing Room.

INDUSTRIAL LOCATIONS

National concerns continue to come to the Pacific Northwest and are choosing the Portland area as a location for their distribution warehouses. This is not only because of the tremendous growth in population but because of the strategic location for distribution throughout the Pacific Northwest, Alaska, the Hawaiian Islands, and the Orient.

The SP&S RAILWAY SYSTEM owns and serves a great many industrial locations along the Columbia and Willamette Rivers as well as in the cities of both Oregon and Washington.

F. J. HARRIS General Industrial Agent American Bank Building P. O. Box 571 Portland 7, Oregon

Through sleeping cars not operated in all trains; fare applies for continuous trip via direct connections. A roomette or duplex roomette is a single private room with wash basin and toilet; a bedroom contains lower and upper berth, wardrobe and complete toilet facilities; a compartment is a private room with lower and upper berths, wash basin and toilet; a drawing room has a divan berth in addition.

Exclusive occupancy of two bedrooms en suite or a bedroom and compartment en suite requires 2 adult rail tickets, or their equivalent; for compartment, duplex roomette, single or double bedroom, one adult ticket between S. P. & S. - N. P. - G. N. and connections; 1-1/10 tickets between certain other lines; for section, one adult ticket for each berth.

STANDARD TIME

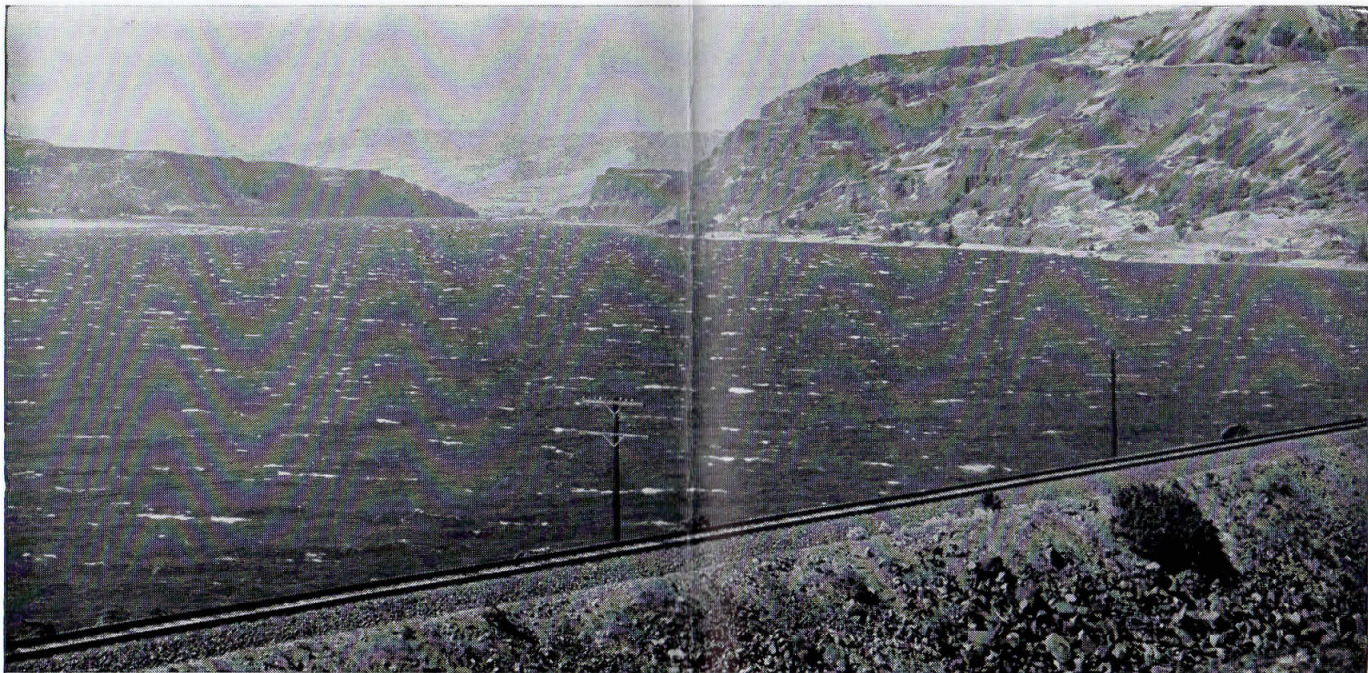


# SPOKANE, PORTLAND AND SEATTLE RAILWAY SYSTEM

S. P. & S. RY.—OREGON TRUNK RY.—OREGON ELECTRIC RY.—(Subsidiaries of Northern Pacific and Great Northern Railways)



S. P. & S. Ry. Near Bingen-White Salmon, Washington

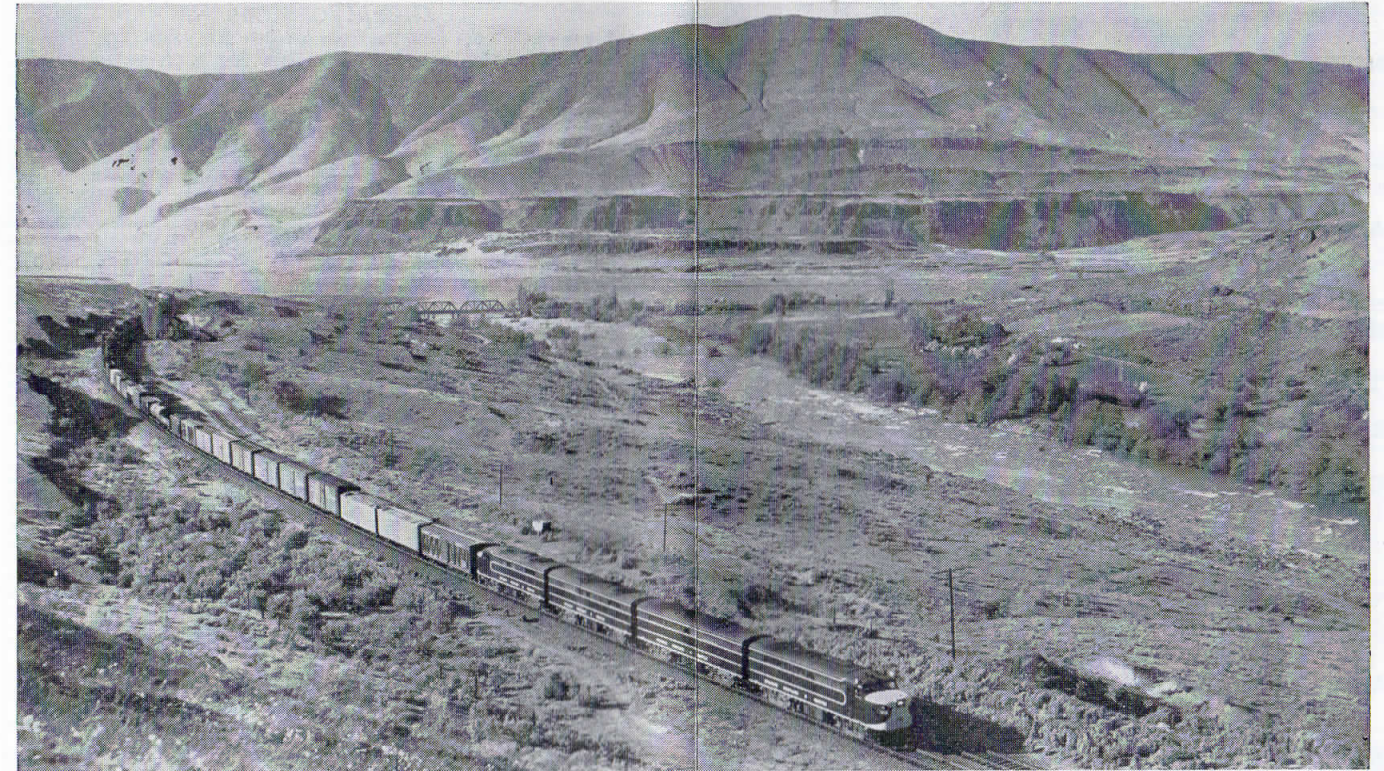


S. P. & S. Ry. Along The Columbia River Near Lyle, Washington



# SPOKANE, PORTLAND AND SEATTLE RAILWAY SYSTEM

S. P. & S. RY.—OREGON TRUNK RY.—OREGON ELECTRIC RY.—(Subsidiaries of Northern Pacific and Great Northern Railways)



Oregon Trunk Ry. Near Moody, Oregon



Portland—the Rose City

Your Choice of... Two Daily Trains  
Between PORTLAND and SPOKANE

See Page 4 For Detailed Schedules

**EASY** way  
to ship anything

Just phone Railway Express.  
Prompt pick-up and fast  
delivery within established  
vehicle limits.



... safe, swift, sure



# SPOKANE, PORTLAND AND SEATTLE RAILWAY SYSTEM

S. P. & S. RY.—OREGON TRUNK RY.—OREGON ELECTRIC RY.—(Subsidiaries of Northern Pacific and Great Northern Railways)

## GENERAL INFORMATION

**NOTE**—This folder has been compiled with care, but may contain errors. Furthermore, it is sometimes necessary to change schedules without notice, trains shown are sometimes unavoidably delayed and connections missed. We hope none of our patrons will be inconvenienced by any of these causes, but the Railway Company will not be liable therefor.

**ADJUSTMENT OF FARES.** In cases of dispute with conductors or agents, passengers should pay fare required, take receipt and communicate with Auditor Revenue Accounts, S. P. & S. Ry., Box 571, Portland 7, Ore.

**REDEMPTION OF TICKETS.** Wholly unused tickets will be redeemed by selling agent. Partly used tickets will be redeemed under tariff regulations on application to Auditor Revenue Accounts.

**STOPOVERS** will be allowed at all regular scheduled stops within limits, on application to Conductor.

**CHILDREN'S FARES.** Children under five years of age, when accompanied by parent or guardian, will be carried free of charge. Children five years of age and under twelve years of age will be charged one-half of the adult fares, if not mature enough to take care of themselves when traveling alone must not be ticketed unless accompanied by parent or guardian. Children twelve years of age and over will be charged the adult fare.

**MARK YOUR BAGGAGE.** All baggage should show name and permanent address of owner. Appropriate gummed labels may be secured from Ticket or Baggage Agent.

**HAND BAGGAGE** in Pullmans is restricted to what can be conveniently placed in berth or at seat occupied by passenger.

**CHECKING CHARGE.** 25c per suitcase, 50c per trunk or similar size carton.

**CHECKED BAGGAGE.** Baggage should be checked at least 30 minutes before departure of the train on which it is desired that it move. Every effort is made for prompt handling of baggage, but cannot guarantee forwarding on same train as passenger, nor can time of arrival be guaranteed.

**BAGGAGE MAXIMUMS.** Ordinarily 150 lbs. is free allowance for each adult ticket. No single piece of baggage exceeding 300 pounds in weight, or exceeding \$2500.00 in value will be checked. Free allowances are subject to tariff stipulation as to contents, weight, value and size.

**BAGGAGE INSURANCE.** A charge of only twenty-five cents is made for each hundred dollars value declared above \$100 for baggage checked for each adult passenger and above \$50 for each half-fare ticket. The maximum baggage valuation which may be insured on a single ticket is \$2500.

**LIMITED LIABILITY.** Excess value of baggage must be declared and paid for at time of checking.

**BICYCLES** (not motorcycles), baby carriages, dogs and guns are carried in baggage cars subject to tariff regulations.

**LOST ARTICLES** should be inquired for at the Baggage Office, Union Station, Portland, Oregon, or S. P. & S. Station, Spokane, Wash.

**RESPONSIBILITY.** No responsibility is assumed for unchecked articles left in stations or cars.

## GENERAL OFFICES

Amer. Bank Bldg., 621 S.W. Morrison St., Box 571, Portland 7, Oregon

**R. S. MACFARLANE**.....President.....St. Paul 1, Minn.  
**JOHN M. BUDD**.....Vice-President.....St. Paul 1, Minn.  
**N. S. WESTERGARD**.....Vice-President and General Manager.....Portland, Oregon

**R. A. LAWRENCE**.....Traffic Manager.....Portland, Oregon  
**E. H. BLOCK**.....Asst. Traffic Manager.....Portland, Oregon  
**W. J. CROSBIE**.....General Passenger Agent.....Portland, Oregon  
**L. S. DAVIS, JR.**.....General Freight Agent.....Portland, Oregon  
**F. J. HARRIS**.....Gen. Industrial Agent.....Portland, Oregon  
**C. S. JOHNSON**.....Asst. General Industrial Agent.....Portland, Oregon  
**J. L. MONAHAN**.....Superintendent.....Portland, Oregon  
**L. Z. DANIELS**.....General Mechanical Supt.....Vancouver, Wash.  
**H. F. MOY**.....Secretary and Chief Engineer.....Portland, Oregon  
**J. H. EARLENBAUGH**.....Treasurer.....Portland, Oregon  
**W. T. COWAN**.....Purchasing Agent.....Portland, Oregon  
**C. E. BROEDER**.....Comptroller.....Portland, Oregon  
**H. L. KENDALL**.....Auditor Disbursements.....Portland, Oregon  
**F. G. BURGARD**.....Auditor Revenue Accounts.....Portland, Oregon  
**L. F. LAWSON**.....Auditor Misc. Accounts.....Portland, Oregon  
**G. C. GRAHAM**.....Auditor Machine Section.....Portland, Oregon  
**W. J. SHEEHAN**.....Gen'l Claim Agent.....Portland, Oregon  
**W. P. GARRETT**.....Right of Way and Tax Agent.....Portland, Oregon  
**H. WENTZIEN**.....Superintendent Dining Cars.....Portland, Oregon

### Representatives

**ALBANY, ORE.**.....R. E. MILLER (Phone Wabash 6-1546 or 6-1547).....Agt., O. E. Ry. Sta.  
**ASTORIA, ORE.**.....R. C. BAKER, 20th & Marine Drive (Ph. Fairfax 5-6111).....Agt. Passenger Sta.  
**BEND, ORE.**.....E. A. KOSKELA (Ev. 2-3911).....Agt. Passenger Sta.  
**EUGENE, ORE.**.....G. E. SKINNER (Ev. 2-2901).....General Agent  
**EUGENE, ORE.**.....W. C. BODNO (Ph. DI 5-8757).....Agt., O.E.Ry.Sta.  
**EUGENE, ORE.**.....W. Z. MYERS (Ph. Diamond 5-8759).....General Agt.  
**EUGENE, ORE.**.....G. W. WRIGHT.....Traveling Frt. & Pass. Agent  
**HILLSBORO, ORE.**.....C. F. DUERR (Ph. Midway 8-4241).....Agt.  
**JUNCTION CITY, ORE.**.....C. L. JOHNSON (Ph. WYman 8-2121).....Agt., O.E.Ry.Frt.Dep.

**LOS ANGELES 14, CALIF.**  
 Great Northern Railway Room 517 510 W. 6th St. Bldg., Ph. Madison 9-1473  
 C. V. PAULSON.....Trav. Frt. & Pass. Agent  
 Northern Pacific Railway 610 South Main St., Phone Madison 7-2321  
 S. A. JEWELL.....General Agent

**OAKLAND 12, CAL.**  
 Great Northern Railway 811 Financial Center, Ph. Templebar 2-7672  
 C. G. ALEXANDER.....District Frt. & Pass. Agent  
 Northern Pacific Railway.....611 Central Building  
 Ph. Glencourt 1-8717

**PORTLAND 1, ORE.**.....J. V. KRISMAN.....General Agent  
 A. T. MERCER.....GAPD (SF&S-NP. Rys.)  
 439 S.W. 6th Ave., Telephone Capitol 2-1311  
 D. B. SCHULTZ.....GAPD (SF&S-GN. Rys.)  
 607 S.W. Washington St., Telephone CA 3-7273  
 F. M. SMITH, Ticket Agt., Union Station, Foot of N.W. 6th Ave., Telephone Capitol 7-3421

H. W. MILLER.....General Agent, Freight Dept.  
 T. J. MARTIN.....Trav. Frt. & Pass. Agent  
 F. J. KIRCHHOFF.....Trav. Frt. & Pass. Agent  
 C. S. POWELL.....City Freight Agent  
 P. W. JOHNSON.....City Freight Agent  
 L. L. COX.....City Freight Agent  
 J. D. SURLES, Local Freight Agent, N. W. 11th and Hoyt, Phone Capitol 8-9111.

**REDMOND, ORE.**.....MRS. L. J. MORTON (Ph. Lincoln 8-2217).....Agt., Passenger Sta.

**SACRAMENTO 14, CAL.**.....R. L. LAMB, Gen. Agt., G. N. Ry., 223 Forum Bldg.  
**ST. HELENS, ORE.**.....J. L. McGRAW (Phone 658).....Agt., S.P.&S. Station  
**SALEM, ORE.**.....P. J. MARTELL (Ph. 3-3129).....Agt., O.E.Ry. Fr. Dep.  
**SAN FRANCISCO 5, CAL.**

Northern Pacific Railway 681 Market St. Phone Sutter 1-1078  
**DANIEL TINNEY**.....General Agent  
 Great Northern Railway 681 Market St. Phone Sutter 1-6051; 1-6052  
**A. L. SCOTT**.....Ass't. Gen. Passenger Agent

**SEASIDE, ORE.**.....S. K. SORENSON (Ph. REDfield 8-5322).....Agt., S.P.&S. Ry. Sta.

**SPOKANE 8, WASH.**.....A. H. STUCKERT.....General Agent  
 D. W. MORRISON, Traveling Frt. & Pass. Agt.  
 925 Old National Bank Bldg., Ph. MADison 4-4238  
**RAY L. DUBOIS**, General Agent, Passenger Dept.,  
 Davenport Hotel, Phone MA 4-5141  
**W. J. RIDDELL**.....General Agent,  
 W. 221—First Avenue

**VANCOUVER, WASH.**.....L. M. CARROLL.....Ticket Agent, Gt. Nor. Ry. Sta.  
 T. S. BRACE, Agt. (Ph. Oxford 3-1491), SP&SR Sta.  
 C. M. WAGNER (Phone Oxford 4-5151).....Pass. Sta.

Agents of the Great Northern and Northern Pacific Rys. throughout the United States are the direct representatives of the Spokane, Portland and Seattle Railway Co., Oregon Trunk Railway and Oregon Electric Railway Co.

