

SP&S RY. GUILDS LAKE INDUSTRIAL AREA, PORTLAND, OREGON

Choice sites still available! The area is ideally suited for firms in need of rail service and desiring combined office, warehouse and distribution facilities. Requirements call for set-backs, off street parking, landscaping, with buildings of modern construction and design. Excellent switching service and only ten minutes driving time from downtown Portland via through arterials. Many firms distributing nationally advertised products have located on tract since its development began less than four years ago.

For additional information write to:

G. F. EHLEN, TRAFFIC MANAGER

or

R. A. LAWRENCE, GENERAL INDUSTRIAL AGENT

P.O. Box 571

Portland 7, Oregon



JULY 15, 1956
Subject to change without notice



The Northwest's Own Railway
THROUGH SERVICE
VIA

NORTH COAST
LIMITED

EMPIRE
BUILDER



TIME TABLES

Pacific Standard Time

**TRAVEL THE
COLUMBIA RIVER
SCENIC ROUTE
THROUGH THE
CASCADE RANGE**

JULY 15, 1956
Subject to change without notice



The Northwest's Own Railway
THROUGH SERVICE
VIA

NORTH COAST
LIMITED

EMPIRE
BUILDER



TIME TABLES

Pacific Standard Time

**TRAVEL THE
COLUMBIA RIVER
SCENIC ROUTE
THROUGH THE
CASCADE RANGE**



SPOKANE, PORTLAND AND SEATTLE RAILWAY SYSTEM

S. P. & S. RY. - OREGON TRUNK RY. - OREGON ELECTRIC RY. - (Subsidiaries of Northern Pacific and Great Northern Railways)

TRANSCONTINENTAL TRAIN SERVICE—BETWEEN PORTLAND, PASCO AND EAST

SPOKANE, PORTLAND AND SEATTLE, NORTHERN PACIFIC AND CHICAGO, BURLINGTON AND QUINCY RAILWAYS

West Bound, Read Down Eastbound, Read Up

Daily C. B. & Q. 31	Daily The Main-streeter C. B. & Q. 47	Daily North Coast Ltd. No. 25	Chicago, Burlington and Quincy Railway (Central Time)	Mil. f' m P't	Daily North Coast Ltd. No. 26	Daily The Main-streeter C. B. & Q. 48	Daily C. B. & Q. 22
2.00	11.10	11.30	Lv Chicago (Union Station).....Ar	2327	1.45	7.55	2.40
2.36	11.47	12.06	Lv Aurora.....Ar	2289	12.59	7.06	2.02
4.15	1.50	1.47	Lv Savanna.....Ar	2182	11.17	4.53	12.27
6.23	4.51	3.55	" LaCrosse.....Ar	2030	9.07	2.14	10.24
8.40	7.30	6.15	Ar St. Paul (Union Station).....Lv	1900	7.00	11.45	8.25
N.P. 3 N.P. 1							
9.30	8.40	6.40	Lv St. Paul (Union Station).....Ar	1900	6.40	7.25	10.30
10.15	9.15	7.10	Lv Minneapolis (Hen. Av. Stn.)Ar	1890	6.10	9.57	6.50
The Mainstreeter							
5.35	7.25	5.35	Lv Duluth.....Ar	1881	7.30	11.10	7.30
5.46	7.39	5.46	" Superior.....Ar	1877	7.14	10.49	7.14
Vista-Dome North Coast Limited							
1.35	11.51	9.26	Lv Staples.....Ar	1733	3.44	7.10	3.25
5.50	2.30	11.25	" Fargo.....Ar	1622	1.42	4.30	10.50
8.55	4.27	1.06	" Jamestown.....Ar	1530	12.02	2.35	7.35
11.48	6.30	2.49	" Bismarck.....Ar	1428	10.19	12.48	4.30
11.30	5.57	2.11	" Mandan (Mountain Time).....Ar	1423	9.02	11.28	2.50
2.25	8.10	4.00	" Dickinson.....Ar	1322	7.12	9.23	12.01
5.05	10.43	6.02	" Glendive.....Ar	1217	5.10	6.56	9.15
.....	1.48	7.27	" Miles City.....Ar	1138	3.44	5.00
.....	4.23	8.27	" Forsyth.....Ar	1093	2.49	3.48
.....	11.30	10.28	Lv Billings.....Ar	991	12.53	1.23
The Mainstreeter							
.....	7.25	12.33	Lv Livingston.....Ar	875	10.46	10.43
.....	8.27	1.19	" Bozeman.....Ar	851	10.06	9.45
.....	11.30	3.49	" Butte.....Ar	756	7.30
BUS							
.....	1.40	4.60	" Helena.....Ar	753	6.45
.....	3.45	6.15	" Garrison.....Ar	704	6.26	4.45
.....	5.00	7.10	" Missoula.....Ar	636	5.08	2.55
.....	6.58	" Paradise. (Pacific Time).....Ar	565	2.17	11.56	2.15
.....	7.32	" Sandpoint.....Ar	446	9.40	10.35
.....	8.25	10.45	" Athol.....Ar	418	9.40	9.40
.....	Ar Spokane (N.P. Station).....Lv	378	10.45	8.18	8.30
N.P. 6							
7.25	9.10	10.53	Lv Spokane (N.P. Station).....Ar	378	10.38	7.58	7.05
10.35	12.15	1.33	Ar Pasco.....Lv	231	7.50	4.50	3.50
S.P. & S. No. 5							
2.50	1.05	2.55	Lv Pasco.....Ar	231	7.10	2.15	2.00
5.25	3.25	5.00	Ar Wishram.....Lv	106	5.05	12.05	11.25
7.50	5.30	6.50	" Vancouver.....Ar	10	3.23	10.10	8.55
8.20	*6.00	7.15	Ar Portland (Union Station).....Lv	0	3.00	9.45	8.30

a—Stops to let off or pick up revenue passengers from or to Missoula and east or Pasco and west where scheduled to stop.
 * Passengers may remain in sleeping cars at Portland until 7:30 A.M.
 ① Arrive ② Leave Glendive daily except Sunday.
 ③ Leave St. Paul daily except Saturday.

EQUIPMENT

VISTA-DOME NORTH COAST LIMITED BETWEEN CHICAGO AND PORTLAND

All Lightweight Equipment

S. P. & S. 1-2, N. P. 25-26, C. B. & Q. 25-26

STANDARD SLEEPER-CLUB-LOUNGE CAR—With 6 roomettes, 3 double bedrooms. Between Pasco and Portland. (Car 10 westbound, Car 20 eastbound.)

OBSERVATION LOUNGE-SLEEPING CAR—Between Chicago and Pasco. Four bedrooms, 1 compartment, spacious lounge, radio, library, writing desk. Buffet service. (259 westbound, 269 eastbound.)

VISTA-DOME SLEEPING CAR—Between Chicago and Portland. Newest type all-room car. 4 Roomette, 4 Single and 4 Double Bedrooms. (258 westbound, 268 eastbound.)

STANDARD SLEEPING CAR—Between Chicago and Portland. Newest type all-room car. 3 bedrooms, 1 compartment, 6 roomettes, 8 duplex roomettes. (257 westbound, 267 eastbound.)

VISTA-DOME COACH—Between Chicago and Portland. Chaise lounge "sleepy hollow" seats with leg rests for reclining full length. (C252 westbound, C262 eastbound). Seats reserved in advance. No extra charge.

LEWIS & CLARK TRAVELLER'S REST BUFFET-LOUNGE CAR—Select and a la carte meals, snacks and beverages, magazines, lounge section.

DINING CAR SERVICE—Between Chicago and Portland. Club breakfasts, \$1.30 to \$2.00; Table d'hote dinner, \$2.95; Table d'hote luncheon, \$2.15. Special plate luncheons and dinners, \$1.85. Also a la carte service.

STEWARDESS NURSE SERVICE—A Stewardess, who is also a registered nurse, is a member of the train personnel between Chicago and Pasco.

TICKETS—All classes of regular and reduced rate rail tickets will be honored for passage on the North Coast Limited.

THE MAINSTREETER BETWEEN CHICAGO AND PORTLAND

S. P. & S. 3-4, N. P. 1-2, C. B. & Q. 47-48

OBSERVATION LOUNGE-BUFFET CAR—Between Spokane and Portland. Contains 8 Sections. (Car 30 westbound, car 40 eastbound.)

LOUNGE SLEEPING CAR—Between St. Paul and Pasco. 8 Sections. (Car 106 westbound, car 206 eastbound.)

STANDARD SLEEPING CARS—Between Chicago and Pasco 8 Duplex Roomettes, 3 Double Bedrooms, 1 Compartment and 6 Roomettes. (105 westbound, 205 eastbound.)

Passengers will make station taxicab transfer at Spokane at no additional cost to modern standard cars from and to Chicago.

DINING CAR SERVICE—Between St. Paul and Pasco.

RECLINING SEAT COACHES—Between Chicago and Pasco. Between St. Paul and Portland.

S. P. & S. No. 5 - 6, (Diesel Power), N. P. No. 5-6

COLUMBIA RIVER EXPRESS BETWEEN SPOKANE, PASCO AND PORTLAND

Deluxe reclining chair car, Pasco-Portland. Cafe car and deluxe coaches, Spokane and Pasco.

SPOKANE, PORTLAND AND SEATTLE RAILWAY SYSTEM

S. P. & S. RY. - OREGON TRUNK RY. - OREGON ELECTRIC RY. - (Subsidiaries of Northern Pacific and Great Northern Railways)

TRANSCONTINENTAL TRAIN SERVICE—BETWEEN PORTLAND, SPOKANE AND EAST

VIA CHICAGO, BURLINGTON & QUINCY AND GREAT NORTHERN SPOKANE, PORTLAND AND SEATTLE RAILWAYS

Westbound, Read Down Eastbound, Read Up

Daily Western Star No. 47	Daily Empire Builder No. 31	Chicago, Burlington and Quincy Railroad (Central Time)	Miles from Portland	Daily Empire Builder No. 32	Daily Western Star No. 48
11.10	2.00	Lv Chicago (Un. Stn.).....Ar	2260	2.00	7.55
11.51	2.36	" Aurora.....Ar	2222	1.18	7.06
2.09	4.15	" Savanna.....Ar	2115	11.36	4.53
4.51	6.23	" LaCrosse.....Ar	1963	9.21	2.14
7.30	8.40	Ar St. Paul (Un. Stn.).....Lv	1833	7.15	11.45
Great Northern Ry.					
Cch's only No. 27	No. 3				Cch's only No. 28
9.30	8.30	Lv St. Paul (Un. Stn.).....Ar	1833	7.00	10.15
10.03	9.00	" Minneapolis (GN Stn.).....Ar	1822	6.25	9.35
11.45	Lv Willmar.....Ar	1731	4.40	7.25
1.50	12.55	" Breckenridge.....Ar	1618	2.42	5.15
.....	" St. Cloud.....Ar
.....	" Fergus Falls.....Ar
.....	" Fargo.....Ar	1571	1.25	4.23
2.55	1.49	" Grand Forks.....Ar	1498	2.40
.....	3.25	" New Rockford.....Ar	1447	11.14	1.32
5.13	8.05	Lv Minot.....Ar	1338	9.17	10.20
7.10	10.30	Ar Williston (Central Time) Lv	1218	7.05	7.50
9.30	9.50	Lv Williston (Mountain ")Ar	1218	5.55	6.40
8.50	12.50	" Glasgow.....Ar	1062	3.00	3.45
11.57	4.10	" Havre.....Ar	909	12.05	11.50
3.20	Ar Great Falls.....Lv	903	9.15	9.30
.....	7.15	Lv Great Falls.....Ar	903	9.10
.....	7.40
6.05	10.20	Lv Shelby.....Ar	804	10.15	6.25
6.40	10.55	" Cut Bank.....Ar	780	9.45	5.55
7.50	12.20	" Glacier Park.....Ar	733	4.45
9.45	2.10	" Belton.....Ar	676	2.55
10.20	2.30	" Columbia Falls.....Ar	661	2.27
.....	Lv Kalispell.....Ar	676	7.10	3.15
.....	Lv Whitefish.....Ar	653	6.35	2.00
10.50	2.50	" Libby.....Ar	537	11.40
1.55	5.15	Ar Troy (Mountain Time) Lv	519	3.40	11.15
2.20	5.45	Lv Troy (Pacific Time).....Ar	519	2.40	10.10
1.25	4.50	" Bonner's Ferry.....Ar	488	9.24
2.20	5.40	Lv Sandpoint.....Ar	454	8.44
3.15	6.19	Ar Spokane (GN Stn.).....Lv	379	11.15	7.10
5.50	8.15	8.00
Spokane, Portland and Seattle Railway					
No. 3	No. 1			No. 2	No. 4
9.45	11.59	Lv Spokane, (GN Stn.).....Ar	379	10.25	6.10
1.05	2.55	" Pasco.....Lv	231	7.25	2.45
3.25	5.00	Ar Wishram.....Lv	106	5.05	12.05
5.30	6.50	" Vancouver.....Ar	10	3.23	10.10
*6.00	7.15	Ar Portland (Un. Stn.).....Lv	0	3.00	9.45

THE STREAMLINED WESTERN STAR (Lightweight Streamlined Equipment)

CHICAGO-PORTLAND NO EXTRA FARE

CB&Q 47-48, GN 3-4, SP&S 3-4

ALL CLASSES OF TICKETS HONORED

Observation-Lounge-Buffet Car between Spokane and Portland—contains 8 Sections (Car 30 Westbound, Car 40 Eastbound).
Standard Sleeping Cars offering modern Pullman accommodations between Chicago and Portland, one car containing 4 Sections, 8 Duplex Roomettes and 4 Double Bedrooms. Double Bedrooms are connecting and may be sold ensuite at drawing room rate (32 Westbound, 42 Eastbound).
Streamlined Day-Nite Coaches between Chicago and Spokane. Deluxe coaches between Spokane and Portland. (Seats reserved June 12 to Sept. 9 only).
Buffet Service between Spokane and Portland.
Coffee Shop Car between St. Paul and Spokane. Meal service and refreshments—lounge facilities.
Dining Car Service between St. Paul and Spokane. Traditional famous Great Northern meals. Club breakfasts, plate luncheons, table d'hote luncheons, plate dinners, table d'hote dinners. Also a la carte service for all meals.
Lounge-Observation Car between Chicago, St. Paul and Spokane.

* Passengers may remain in sleeping cars at Portland until 7:30 A. M.
 d—No. 2 stops at Glasgow to discharge revenue passengers from Minot and East and to receive revenue passengers for Spokane and West where No. 1 is scheduled to stop.
 e—No. 1 stops at Cut Bank to discharge revenue passengers from Williston and east and to receive revenue passengers for scheduled stops Spokane and West.
 g—No. 2 stops at Cut Bank to discharge revenue passengers from Spokane and West and to receive revenue passengers for scheduled stops Williston and East. ② Bus service, rail tickets honored.



SPOKANE, PORTLAND AND SEATTLE RAILWAY SYSTEM

S. P. & S. RY. - OREGON TRUNK RY. - OREGON ELECTRIC RY. - (Subsidiaries of Northern Pacific and Great Northern Railways)

PORTLAND - WISHRAM - PASCO - SPOKANE TRAINS

Westbound, Read Down				Eastbound, Read Up								
SPS No. 3 Daily	NP 1 SPS 3 Daily	NP 5 SPS 5 Daily	NP No. 25 SPS No. 1 Daily	SPS No. 1 Daily	Ele-va.	Spokane, Portland and Seattle Railway	Miles from Portland	SPS 6 No. 6 Daily	SPS No. 2 No. 26 Daily	SPS 4 NP 2 Daily	SPS No. 4 Daily	SPECIAL STOPS No's 1 & 2 Stops only as shown
9.45	8.50	7.25	10.55	*11.59	1871	Lv... Spokane (business capital of... t	379.5	10.25	10.38	7.58	6.10	No. 3. At any station to discharge revenue passengers from east of Spokane.
10.24	N.P. Ry. No. 1	N.P. Ry. No. 5	Vista-Dome North Coast Limited	Stream-lined Empire Builder	1920	Lv... Great No. Station Inland Empire Ar	377.5	10.38	7.58	6.10	No. 4. At any station to discharge revenue passengers from east of Spokane.	At any station east of Pasco to receive revenue passengers for Vancouver and Portland.
10.40	Spokane to Pasco Provisional Stops at Cheney Sprague Ritzville Lind Connell	Spokane to Pasco Stopping at Cheney Sprague Ritzville Lind Connell	Vista-Dome North Coast Limited Via N.P. Ry. Spokane to Pasco	Stream-lined Empire Builder	2292	Lv... Nor. Pac. Station	360.7	7.58	6.10	5.22	5.04	At any station west of Pasco to discharge revenue passengers from Spokane.
11.04	Spokane to Pasco Provisional Stops at Cheney Sprague Ritzville Lind Connell	Spokane to Pasco Stopping at Cheney Sprague Ritzville Lind Connell	Vista-Dome North Coast Limited Via N.P. Ry. Spokane to Pasco	Stream-lined Empire Builder	2292	Lv... South Cheney (Vast plateau of Ar	360.7	7.58	6.10	5.22	5.04	No. 4. At any station to discharge revenue passengers from east of Spokane.
11.27	Spokane to Pasco Provisional Stops at Cheney Sprague Ritzville Lind Connell	Spokane to Pasco Stopping at Cheney Sprague Ritzville Lind Connell	Vista-Dome North Coast Limited Via N.P. Ry. Spokane to Pasco	Stream-lined Empire Builder	1947	Lv... Amber (Eastern Wash. N.P. Ry. No. 6	349.5	7.58	6.10	5.22	5.04	At any station west of Pasco to discharge revenue passengers from Spokane.
11.42	Spokane to Pasco Provisional Stops at Cheney Sprague Ritzville Lind Connell	Spokane to Pasco Stopping at Cheney Sprague Ritzville Lind Connell	Vista-Dome North Coast Limited Via N.P. Ry. Spokane to Pasco	Stream-lined Empire Builder	1826	Lv... Rodna	343.3	7.58	6.10	5.22	5.04	No. 4. At any station to discharge revenue passengers from east of Spokane.
12.12	Spokane to Pasco Provisional Stops at Cheney Sprague Ritzville Lind Connell	Spokane to Pasco Stopping at Cheney Sprague Ritzville Lind Connell	Vista-Dome North Coast Limited Via N.P. Ry. Spokane to Pasco	Stream-lined Empire Builder	1706	Lv... Lamont (West edge great Palouse grain district)	334.7	7.58	6.10	5.22	5.04	At any station east of Pasco to discharge revenue passengers from Portland or Vancouver.
12.50	Spokane to Pasco Provisional Stops at Cheney Sprague Ritzville Lind Connell	Spokane to Pasco Stopping at Cheney Sprague Ritzville Lind Connell	Vista-Dome North Coast Limited Via N.P. Ry. Spokane to Pasco	Stream-lined Empire Builder	1590	Lv... Rockwell	329.4	7.58	6.10	5.22	5.04	Stops to receive passengers made only upon advance arrangements through Agent. Stops to discharge passengers made upon application to conductor.
1.05	Spokane to Pasco Provisional Stops at Cheney Sprague Ritzville Lind Connell	Spokane to Pasco Stopping at Cheney Sprague Ritzville Lind Connell	Vista-Dome North Coast Limited Via N.P. Ry. Spokane to Pasco	Stream-lined Empire Builder	1468	Lv... Lantz	317.4	7.58	6.10	5.22	5.04	References:
1.12	Spokane to Pasco Provisional Stops at Cheney Sprague Ritzville Lind Connell	Spokane to Pasco Stopping at Cheney Sprague Ritzville Lind Connell	Vista-Dome North Coast Limited Via N.P. Ry. Spokane to Pasco	Stream-lined Empire Builder	1267	Lv... Bange	299.5	7.58	6.10	5.22	5.04	a Stops to pick up revenue passengers for Pasco or beyond.
1.55	Spokane to Pasco Provisional Stops at Cheney Sprague Ritzville Lind Connell	Spokane to Pasco Stopping at Cheney Sprague Ritzville Lind Connell	Vista-Dome North Coast Limited Via N.P. Ry. Spokane to Pasco	Stream-lined Empire Builder	1067	Lv... Hooper	290.9	7.58	6.10	5.22	5.04	b Will stop on signal to receive revenue passengers for Vancouver and Portland.
2.50	Spokane to Pasco Provisional Stops at Cheney Sprague Ritzville Lind Connell	Spokane to Pasco Stopping at Cheney Sprague Ritzville Lind Connell	Vista-Dome North Coast Limited Via N.P. Ry. Spokane to Pasco	Stream-lined Empire Builder	964	Lv... Sperry	285.3	7.58	6.10	5.22	5.04	g Will stop on signal to discharge revenue passengers from Portland and Vancouver.
3.52	Spokane to Pasco Provisional Stops at Cheney Sprague Ritzville Lind Connell	Spokane to Pasco Stopping at Cheney Sprague Ritzville Lind Connell	Vista-Dome North Coast Limited Via N.P. Ry. Spokane to Pasco	Stream-lined Empire Builder	888	Lv... Kahlolus (Spectacular Devil's Canyon	277.8	7.58	6.10	5.22	5.04	m Stops to receive or discharge revenue passengers to or from Pasco and East.
4.02	Spokane to Pasco Provisional Stops at Cheney Sprague Ritzville Lind Connell	Spokane to Pasco Stopping at Cheney Sprague Ritzville Lind Connell	Vista-Dome North Coast Limited Via N.P. Ry. Spokane to Pasco	Stream-lined Empire Builder	864	Lv... Snake River	268.6	7.58	6.10	5.22	5.04	n to dispatch U.S. mail.
4.37	Spokane to Pasco Provisional Stops at Cheney Sprague Ritzville Lind Connell	Spokane to Pasco Stopping at Cheney Sprague Ritzville Lind Connell	Vista-Dome North Coast Limited Via N.P. Ry. Spokane to Pasco	Stream-lined Empire Builder	719	Lv... Snake River	256.3	7.58	6.10	5.22	5.04	* Passengers may remain in sleeping cars at Portland until 7:30 A.M.
4.49	Spokane to Pasco Provisional Stops at Cheney Sprague Ritzville Lind Connell	Spokane to Pasco Stopping at Cheney Sprague Ritzville Lind Connell	Vista-Dome North Coast Limited Via N.P. Ry. Spokane to Pasco	Stream-lined Empire Builder	496	Lv... Snake River	250.5	7.58	6.10	5.22	5.04	* Sleeping car ready for occupancy at 9:30 P.M.
5.02	Spokane to Pasco Provisional Stops at Cheney Sprague Ritzville Lind Connell	Spokane to Pasco Stopping at Cheney Sprague Ritzville Lind Connell	Vista-Dome North Coast Limited Via N.P. Ry. Spokane to Pasco	Stream-lined Empire Builder	466	Lv... Snake River	244.8	7.58	6.10	5.22	5.04	• Stops to entrain or de-train revenue passengers to or from points East of Spokane provided advance arrangements are made through agent.
5.14	Spokane to Pasco Provisional Stops at Cheney Sprague Ritzville Lind Connell	Spokane to Pasco Stopping at Cheney Sprague Ritzville Lind Connell	Vista-Dome North Coast Limited Via N.P. Ry. Spokane to Pasco	Stream-lined Empire Builder	454	Lv... Snake River	244.8	7.58	6.10	5.22	5.04	t Telegraph stations.
5.25	Spokane to Pasco Provisional Stops at Cheney Sprague Ritzville Lind Connell	Spokane to Pasco Stopping at Cheney Sprague Ritzville Lind Connell	Vista-Dome North Coast Limited Via N.P. Ry. Spokane to Pasco	Stream-lined Empire Builder	358	Lv... PASCO	231.3	7.58	6.10	5.22	5.04	
5.35	Spokane to Pasco Provisional Stops at Cheney Sprague Ritzville Lind Connell	Spokane to Pasco Stopping at Cheney Sprague Ritzville Lind Connell	Vista-Dome North Coast Limited Via N.P. Ry. Spokane to Pasco	Stream-lined Empire Builder	352	Lv... PASCO	231.3	7.58	6.10	5.22	5.04	
5.39	Spokane to Pasco Provisional Stops at Cheney Sprague Ritzville Lind Connell	Spokane to Pasco Stopping at Cheney Sprague Ritzville Lind Connell	Vista-Dome North Coast Limited Via N.P. Ry. Spokane to Pasco	Stream-lined Empire Builder	352	Lv... PASCO	231.3	7.58	6.10	5.22	5.04	
6.01	Spokane to Pasco Provisional Stops at Cheney Sprague Ritzville Lind Connell	Spokane to Pasco Stopping at Cheney Sprague Ritzville Lind Connell	Vista-Dome North Coast Limited Via N.P. Ry. Spokane to Pasco	Stream-lined Empire Builder	352	Lv... PASCO	231.3	7.58	6.10	5.22	5.04	
6.17	Spokane to Pasco Provisional Stops at Cheney Sprague Ritzville Lind Connell	Spokane to Pasco Stopping at Cheney Sprague Ritzville Lind Connell	Vista-Dome North Coast Limited Via N.P. Ry. Spokane to Pasco	Stream-lined Empire Builder	352	Lv... PASCO	231.3	7.58	6.10	5.22	5.04	
6.22	Spokane to Pasco Provisional Stops at Cheney Sprague Ritzville Lind Connell	Spokane to Pasco Stopping at Cheney Sprague Ritzville Lind Connell	Vista-Dome North Coast Limited Via N.P. Ry. Spokane to Pasco	Stream-lined Empire Builder	352	Lv... PASCO	231.3	7.58	6.10	5.22	5.04	
6.24	Spokane to Pasco Provisional Stops at Cheney Sprague Ritzville Lind Connell	Spokane to Pasco Stopping at Cheney Sprague Ritzville Lind Connell	Vista-Dome North Coast Limited Via N.P. Ry. Spokane to Pasco	Stream-lined Empire Builder	352	Lv... PASCO	231.3	7.58	6.10	5.22	5.04	
6.31	Spokane to Pasco Provisional Stops at Cheney Sprague Ritzville Lind Connell	Spokane to Pasco Stopping at Cheney Sprague Ritzville Lind Connell	Vista-Dome North Coast Limited Via N.P. Ry. Spokane to Pasco	Stream-lined Empire Builder	352	Lv... PASCO	231.3	7.58	6.10	5.22	5.04	
6.42	Spokane to Pasco Provisional Stops at Cheney Sprague Ritzville Lind Connell	Spokane to Pasco Stopping at Cheney Sprague Ritzville Lind Connell	Vista-Dome North Coast Limited Via N.P. Ry. Spokane to Pasco	Stream-lined Empire Builder	352	Lv... PASCO	231.3	7.58	6.10	5.22	5.04	
6.48	Spokane to Pasco Provisional Stops at Cheney Sprague Ritzville Lind Connell	Spokane to Pasco Stopping at Cheney Sprague Ritzville Lind Connell	Vista-Dome North Coast Limited Via N.P. Ry. Spokane to Pasco	Stream-lined Empire Builder	352	Lv... PASCO	231.3	7.58	6.10	5.22	5.04	
6.55	Spokane to Pasco Provisional Stops at Cheney Sprague Ritzville Lind Connell	Spokane to Pasco Stopping at Cheney Sprague Ritzville Lind Connell	Vista-Dome North Coast Limited Via N.P. Ry. Spokane to Pasco	Stream-lined Empire Builder	352	Lv... PASCO	231.3	7.58	6.10	5.22	5.04	
7.04	Spokane to Pasco Provisional Stops at Cheney Sprague Ritzville Lind Connell	Spokane to Pasco Stopping at Cheney Sprague Ritzville Lind Connell	Vista-Dome North Coast Limited Via N.P. Ry. Spokane to Pasco	Stream-lined Empire Builder	352	Lv... PASCO	231.3	7.58	6.10	5.22	5.04	
7.09	Spokane to Pasco Provisional Stops at Cheney Sprague Ritzville Lind Connell	Spokane to Pasco Stopping at Cheney Sprague Ritzville Lind Connell	Vista-Dome North Coast Limited Via N.P. Ry. Spokane to Pasco	Stream-lined Empire Builder	352	Lv... PASCO	231.3	7.58	6.10	5.22	5.04	
7.16	Spokane to Pasco Provisional Stops at Cheney Sprague Ritzville Lind Connell	Spokane to Pasco Stopping at Cheney Sprague Ritzville Lind Connell	Vista-Dome North Coast Limited Via N.P. Ry. Spokane to Pasco	Stream-lined Empire Builder	352	Lv... PASCO	231.3	7.58	6.10	5.22	5.04	
7.22	Spokane to Pasco Provisional Stops at Cheney Sprague Ritzville Lind Connell	Spokane to Pasco Stopping at Cheney Sprague Ritzville Lind Connell	Vista-Dome North Coast Limited Via N.P. Ry. Spokane to Pasco	Stream-lined Empire Builder	352	Lv... PASCO	231.3	7.58	6.10	5.22	5.04	
7.30	Spokane to Pasco Provisional Stops at Cheney Sprague Ritzville Lind Connell	Spokane to Pasco Stopping at Cheney Sprague Ritzville Lind Connell	Vista-Dome North Coast Limited Via N.P. Ry. Spokane to Pasco	Stream-lined Empire Builder	352	Lv... PASCO	231.3	7.58	6.10	5.22	5.04	
7.35	Spokane to Pasco Provisional Stops at Cheney Sprague Ritzville Lind Connell	Spokane to Pasco Stopping at Cheney Sprague Ritzville Lind Connell	Vista-Dome North Coast Limited Via N.P. Ry. Spokane to Pasco	Stream-lined Empire Builder	352	Lv... PASCO	231.3	7.58	6.10	5.22	5.04	
7.50	Spokane to Pasco Provisional Stops at Cheney Sprague Ritzville Lind Connell	Spokane to Pasco Stopping at Cheney Sprague Ritzville Lind Connell	Vista-Dome North Coast Limited Via N.P. Ry. Spokane to Pasco	Stream-lined Empire Builder	352	Lv... PASCO	231.3	7.58	6.10	5.22	5.04	
8.00	Spokane to Pasco Provisional Stops at Cheney Sprague Ritzville Lind Connell	Spokane to Pasco Stopping at Cheney Sprague Ritzville Lind Connell	Vista-Dome North Coast Limited Via N.P. Ry. Spokane to Pasco	Stream-lined Empire Builder	352	Lv... PASCO	231.3	7.58	6.10	5.22	5.04	
8.03	Spokane to Pasco Provisional Stops at Cheney Sprague Ritzville Lind Connell	Spokane to Pasco Stopping at Cheney Sprague Ritzville Lind Connell	Vista-Dome North Coast Limited Via N.P. Ry. Spokane to Pasco	Stream-lined Empire Builder	352	Lv... PASCO	231.3	7.58	6.10	5.22	5.04	
8.20	Spokane to Pasco Provisional Stops at Cheney Sprague Ritzville Lind Connell	Spokane to Pasco Stopping at Cheney Sprague Ritzville Lind Connell	Vista-Dome North Coast Limited Via N.P. Ry. Spokane to Pasco	Stream-lined Empire Builder	352	Lv... PASCO	231.3	7.58	6.10	5.22	5.04	

FOR THROUGH SERVICE AND CONSIST OF ALL TRAINS, SEE PRECEDING PAGES 2 and 3.

A TRANS-CONTINENTAL SYSTEM OF RAILWAYS THROUGH AMERICA'S WONDERLAND

Traversing the northern states between the Pacific Northwest and Chicago presents a veritable wonderland offering passengers a splendid variety of ever-changing scenery.

Over these lines, between Portland and Chicago, are operated four of America's famous trains, the Stream-lined Empire Builder and the Streamlined Western Star,

via S.P.&S. Spokane, G.N. St. Paul, C.B.&Q. Chicago, and the Streamlined Vista Dome North Coast Limited and The Mainstreeter via S.P.&S. Pasco, N.P. St. Paul and C.B.&Q. Chicago where connections are made to all points east and south.

These trains provide passengers with every feature of modern railway travel for their comfort, and pleasure.

Light face figures denote A.M. time. Bold face figures denote P.M. time. Ar. Arrive. Lv. Leave. /Stop on Signal.

SPOKANE, PORTLAND AND SEATTLE RAILWAY SYSTEM

S. P. & S. RY. - OREGON TRUNK RY. - OREGON ELECTRIC RY. - (Subsidiaries of Northern Pacific and Great Northern Railways)

PORTLAND - REDMOND - BEND TRAINS

Read Down			Read Up		
Eleva-tion	No. 105 Sat. Only	No. 103 Daily Ex. Sat. & Sun.	Oregon Trunk Ry.	Miles from P't'd	No. 102 Daily Ex. Sun.
3618	7.00	11.00	Lv Bend	257.6	7.00
3572	7.11	11.15	Dechutes	250.3	7.35
2983	7.30	11.40	Redmond	240.7	6.15
2918	7.35	11.46	Prineville Jet	238.4	5.50
2863	7.40	11.52	Terrebonne	235.6	5.45
2850	7.52	12.09	Opal City	227.7	5.31
2624	8.02	12.25	Culver	221.1	5.18
2517	8.12	12.35	Motolius	216.3	5.10
2458	8.25	12.55	Madras	211.1	5.00
2169	8.35	1.10	Paxton	205.9	4.34
1787	8.51	1.26	Gateway	200.1	4.18
1254	9.13	1.48	South Jet	191.9	3.56
1203	9.24	1.59	Axford	189.0	3.49
1074	9.40	2.15	Kaskela	186.2	3.45
1012	9.50	2.25	Hardy	179.7	3.31
960	9.57	2.32	Dant	173.6	3.19
852	10.20	3.01	Nena	169.9	3.11
788	10.28	3.09	Tuskan	160.7	2.53
783	10.35	3.16	Maupin	153.4	2.45
606	10.51	3.32	Sherar	156.9	2.39
510	11.10	3.51	Oakbrook	145.8	2.23
508	11.18	3.59	Sinamox	136.5	2.04
354	11.35	4.16	Dike	132.5	1.55
286	12.01	4.41	Lockit	124.4	1.38
166	12.15	5.00	Moody	112.0	1.13
			Ar Wishram	106.1	1.00

EQUIPMENT BETWEEN PORTLAND AND BEND
Trains Nos. 4-102 and 105-3. Coaches daily between Portland and Wishram and Daily except Sunday between Wishram and Bend. Observation Lounge Buffet cars daily between Portland and Wishram. See pages 2, 3 and 4.

RAIL TRAVEL CREDIT CARD PLAN
permits purchase of Rail and Pullman tickets from any S. P. & S. Ry. Co. agent on Credit by securing a Credit Card from the Rail Travel Credit Agency, Room 436 Union Station, Chicago, Ill.

"DRIVURSELF" RAIL-AUTO SERVICE
provides a new automobile at your destination or stop over point. Ask the agent for further details on any of the above plans.



You can **CHARGE TELEGRAMS** Anywhere

Simply write your message on a telegraph blank (available on all Trains) and include your own name and address. Give it to any of the Train's personnel for sending. The charges will be billed to you at home or business.

On any occasion it's wise to wire **WESTERN UNION**

Light face figures denote A.M. time. Bold face figures denote P.M. time. Ar. Arrive. Lv. Leave. /Stop on Signal. t Telegraph Office.

PACIFIC TRAILWAYS

Read Down			Read Up		
Dly.	Dly.	Dly.	Dly.	Dly.	Dly.
6.00	3.30	7.30	Lv PORTLAND	Ore	6.10
9.20	6.45	10.52	Ar Madras	Ore	1.15
9.32			Ar Metolius	Ore	9.55
9.39			Ar Culver	Ore	1.48
10.03	7.23	11.38	Ar Redmond	Ore	2.05
10.30	8.00	12.10	Ar BEND	Ore	9.10
					1.15
					12.45

Rail tickets routed via OT - S. P. & S. Railways from or to Central Oregon points will be honored to or from Portland, Oregon by the Mt. Hood Stages (Pacific Trailways). Ask agent for details. * Except Sundays and holidays.

FREIGHT SERVICE

Route your freight shipments via the Spokane, Portland and Seattle Railway for fast and dependable service-between Portland, Astoria, Pasco, Spokane, Yakima, Walla Walla, Pendleton, Lewiston, Bend and all points east and south.

Let Us Handle Your Transportation Problems

FREIGHT SERVICE ONLY

Portland - St. Helens - Astoria Line

Miles	STATIONS	Miles	STATIONS
0	Portland	71.2	Westport
4.5	Froman	73.5	Wauna
6.7	Fry	76.8	Bradwood
8.4	Goltra	86.5	Knappa
10.3	Tallman	99.7	Astoria
14.8	Lebanon	105.6	Warrenton
15.9	Weldwood	108.3	Camp Clatsop
20.2	Waterloo	118.0	Seaside
22.1	Nye		
28.8	Sweet Home		
31.9	Foster		



FREIGHT SERVICE ONLY

is operated on the following Branches

S. P. & S. Railway

Miles	STATIONS
0	Lyle
10.3	Pitt
13.4	Klickitat
16.9	Wahkiakus
30.2	Warwick
35.3	Centerville



SPOKANE, PORTLAND AND SEATTLE RAILWAY SYSTEM

CONNECTIONS AT PORTLAND
S. P. & S. RY. - OREGON TRUNK RY. - OREGON ELECTRIC RY. - (Subsidiaries of Northern Pacific and Great Northern Railways)

PORTLAND - PUGET SOUND - BRITISH COLUMBIA

Northern Pacific Ry. - Great Northern Ry. - Union Pacific R. R.

Northbound-Read Down Southbound-Read Up

U.P.	G.N.	N.P.	U.P.	G.N.	N.P.	U.P.	U.P.
401	469	407	457	460	408	458	402
Daily	Daily	Daily	Daily	Daily	Daily	Daily	Daily
11.45	1.30	5.30	9.00	12.20	4.30	9.15	5.45
12.09	1.49	5.49	9.21	11.58	4.09	8.51	5.15
f12.53				f11.25		f 4.33	
1.15	2.28	6.29	10.01	11.14	3.24	8.04	4.20
1.31				f11.02		3.55	
2.20	3.12	7.11	10.43	Ar. Chehalis	10.29	2.39	7.18
2.30	3.23	7.21	10.53	Ar. Centralia	10.22	2.32	7.11
	v 3.46	b 7.44	b11.16	Ar. East Olympia	b 9.58	b 2.08	v 6.47
4.10	4.31	8.29	12.01	Ar. Tacoma	9.16	1.26	6.02
u 6.15	k 5.30	k 9.30	u 1.00	Ar. Seattle	k 8.20	k12.30	u 5.00

358	362	360	GREAT NORTHERN RY.	357	359	361
8.05	6.25	2.00	Lv. Seattle	12.10	4.35	10.25
9.00	7.20	2.51	Lv. Everett	11.21	3.38	9.31
10.35	8.53	4.14	Lv. Bellingham	9.46	2.06	7.55
11.59	10.20	5.40	Ar. Vancouver, B.C.	8.00	12.40	6.30

b To and from Olympia by bus k King Street Station
p Stops from Portland and beyond u Union Station
v No connecting bus service between East Olympia and Olympia.

SOUTHERN PACIFIC COMPANY

Southbound-Read Down Northbound-Read Up

19	11	9	12	20	10	
10.15	4.45	7.45	Lv. Portland	8.20	7.25	11.30
11.57	5.57	8.57	Ar. Salem	7.03	5.30	10.10
12.43	6.28	9.28	Ar. Albany	6.34	4.47	9.41
2.42	8.18	11.20	Ar. (a) Corvallis (a)	6.20	4.30	7.27
1.40	7.09	10.09	Ar. Eugene	5.55	3.40	9.02
7.30	11.33	2.25	Ar. Klamath Falls	1.35	9.50	4.40
1.20	4.07	6.36	Ar. Redding	9.16	3.15	12.18
6.55	7.15	9.40	Ar. (a) Sacramento (a)	5.50	5.00	9.00
6.28	7.31	9.57	Ar. Martinez	5.42	9.14	8.50
7.30	8.26	10.43	Ar. Oakland, 16th St.	4.44	8.14	8.03
7.40	8.35	10.55	Ar. Oakland Pier	4.35	8.05	7.55
8.20	9.15	11.30	Ar. San Francisco	4.00	7.30	7.25
10.50	7.00	10.50	Ar. Los Angeles	6.25	6.25	6.05

a-via P G Lines Bus.

EQUIPMENT OF TRAINS

Trains 9-10, Shasta Daylight—Streamlined Air Conditioned Train-Radio Parlor Obs. Reclining Chair Cars, Diner, Coffee Shop and Tavern Car. Reserved seat Chair Car. Train 58 will take transfers from No. 9 at Martinez. Train 57 will make transfer to No. 10 at Oakland, 16th Street. Train 11-12, Cascade—(Streamlined, Air Conditioned). Between Portland and San Francisco. Standard sleeping cars with drawing rooms, compartments, bedrooms, roomettes, lounge and dining car. Reserved seat chair car. (Telephone service on Trains 11-12.) Train 19-20, Klamath—(Air Conditioned). Between Portland and San Francisco. Standard sleeping cars, diner, coaches and reclining chair cars.

SPOKANE, PORTLAND AND SEATTLE RAILWAY SYSTEM

S. P. & S. RY. - OREGON TRUNK RY. - OREGON ELECTRIC RY. - (Subsidiaries of Northern Pacific and Great Northern Railways)



Sleeping, Parlor Car and Reserved Seat Fares

Federal Tax Extra

For information only. Subject to change without notice.

BETWEEN	PORTLAND		SPOKANE	
	Parlor Car Seat	Lower Berth Standard	Parlor Car Seat	Lower Berth Standard
Billings - Mont.		\$11.45		\$7.40
Bingen-W. Salmon-W. Mont.				5.40
Boston - Mass.		31.05		27.55
Bozeman - Mont.		10.30		6.25
Buffalo - N.Y.		27.55		24.30
Butte - Mont.		9.30		5.40
Camas - Wn.				5.40
Chicago - Ill.		22.60		19.45
Cincinnati - Ohio		25.05		21.65
Cleveland - Ohio		25.70		22.60
Denver - Colo.		15.90		14.85
Detroit - Mich.		25.05		21.65
Duluth - Minn.		19.45		16.55
Eugene - Ore.	1.25	5.40		6.60
Fargo - N.D.		17.60		13.75
Gardiner - Mont.		11.00		7.05
Glacier Park - Mont.		8.90		5.40
Great Falls - Mont.		11.00		6.60
Havre - Mont.		11.00		7.05
Helena - Mont.		9.30		5.40
Kansas City - Mo. (Via St. Paul, Minn.)		20.75		17.85
Klamath Falls - Ore.	2.85	5.40		8.90
Livingston - Mont.		10.70		6.60
Los Angeles - Calif.		12.85		16.90
Louisville - Ky.		25.05		21.65
Lyle - Wn.				5.40

① Railroad Owned Cars.

INDUSTRIAL LOCATIONS

National concerns continue to come to the Pacific Northwest and are choosing the Portland area as a location for their distribution warehouses. This is not only because of the tremendous growth in population but because of the strategic location for distribution throughout the Pacific Northwest, Alaska, the Hawaiian Islands, and the Orient. In addition, industries requiring lower power costs, better labor, or climatic working conditions, continue to locate throughout the area.

The SP&S RAILWAY SYSTEM owns and serves a great many industrial locations along the Columbia and Willamette Rivers as well as in the cities of both Oregon and Washington. Contact the Industrial Department for information.

R. A. LAWRENCE
General Industrial Agent
American Bank Building
P. O. Box 571
Portland 7, Oregon

Through sleeping cars not operated in all trains; fare applies for continuous trip via direct connections. A duplex roomette is a single private room with wash basin and toilet; a bedroom contains lower and upper berth, wardrobe and complete toilet facilities; a compartment is a private room with lower and upper berths, wash basin and toilet; a drawing room has a divan berth in addition.

Exclusive occupancy of a drawing room, two bedrooms en suite or a bedroom and compartment en suite requires 1 1/4 adult rail tickets, or their equivalent; for compartment, duplex-roomette, single or double bedroom, one adult ticket between S. P. & S. - N. P. - G. N. and connections; 1-1/10 tickets between certain other lines; for section, one adult ticket for each berth.

CONNECTIONS AT SPOKANE AND PASCO

Bus Ex. Sun.	Bus Dly	Great Northern Ry.	Bus Dly	Bus Dly	
2.15	9.20	Lv. Spokane	Ar. Deer Park	1.20	7.30
2.50	9.52	Ar. Chewelah		12.45	6.55
3.50	10.45		Ar. Colville	11.50	6.00
4.25	11.40		Lv. Kettle Falls	11.15	5.30
4.40	11.52		Ar. Northport	11.00	4.55
	12.43		Ar. Trall, B.C.		4.10
	1.40		Ar. Nelson		3.20
	4.25				8.30

Great Northern Ry. Bend, Klamath Falls Bieber	SP&S 4	SP&S 2	SP&S 6	Northern Pacific Walla Walla	SP&S 3	SP&S 1	SP&S 5
	9.45	3.00	8.30	Lv. Portland	6.00	7.15	8.20
	2.15	7.10	2.00	Ar. Pasco	1.05	2.55	2.50
(Freight Service Only)	Bus	Bus	Bus		Bus	Bus	Bus
Miles	8.00	7.50	3.55	Lv. Pasco		9.55	9.40
0 Bend.....	8.20	8.10	4.15	Ar. Walla Walla		9.28	9.15
15 Lava Jct.....	9.05	8.55	5.00	Ar. Walla Walla		8.45	8.30
32 La Pine.....							
52 Crescent.....							
68 Chemult.....							
110 Chiloquin.....	9.45	9.10	8.30	Lv. Portland	8.20	6.00	6.00
133 Algoma.....	2.15	3.00	2.00	Ar. Pasco	2.50	1.05	1.05
144 Klamath Falls..	10.45	1.48	12.40	Lv. Pasco	4.45	4.30	7.35
159 Merrill.....	10.57		12.50	Ar. Kennewick	4.30	4.20	
210 Scarface.....	12.02		1.35	Ar. Prosser	3.40	3.33	
222 Lookout.....	12.46		2.12	Ar. Toppenish	3.04	2.54	
234 Bieber.....	1.30	3.37	2.40	Ar. Yakima	2.40	2.25	5.50
	2.37	4.41	3.59	Ar. Ellensburg	1.20	1.00	4.48

MARK YOUR BAGGAGE

All baggage, whether checked or carried with you, should be plainly marked with your name and permanent address. This will insure prompt recovery should it become lost or go astray. Remove all obsolete labels and addresses. JEWELRY, CURRENCY, VALUABLE PAPERS and LIQUIDS should not be placed in baggage intended for checking. The railway will not assume responsibility for loss of, or damage to such articles.

4-311 Daily	NORTHERN PACIFIC	314-3 Daily
9.45	Lv. Portland	6.00
8.10	Ar. Spokane	9.10
8.45	Lv. Spokane	8.30
f 9.14	Ar. Spangle	f 8.02
f 9.35	Ar. Rosalia	f 7.41
f 9.51	Ar. Oakesdale	f 7.25
f10.11	Ar. Garfield	f 7.05
10.31	Ar. Palouse	6.48
10.59	Ar. Pullman	6.22
11.18	Ar. Moscow	6.01
12.04	Ar. Kendrick	5.14
f12.11	Ar. Juliaetta	f 5.07
12.45	Ar. Lewiston	4.30

SAN FRANCISCO - LOS ANGELES - COAST LINE

90	76	94	98	M	95	75	91	99	
12.20	8.00	6.45	7.15	0	Lv. San Francisco	5.45	7.30	4.30	5.00
1.50	9.03	7.49	8.06	47	Ar. San Jose	4.35	6.13	3.20	4.05
9.27	2.22	12.37	12.28	248	Ar. San Luis Obispo	11.45	1.15	8.35	11.51
12.50	4.58	3.00	2.41	367	Ar. Santa Barbara	9.15	10.34	4.45	9.30
4.30	7.30	5.45	5.00	470	Ar. Los Angeles	6.45	8.00	12.01	7.15

SAN FRANCISCO - LOS ANGELES - VALLEY LINE

60	58	52	M	57	51	59	
	8.30	6.15	0	Lv. San Francisco	7.50	7.20	
	9.05	6.50	4	Lv. Oakland Pier	7.15	6.45	
7.15				Lv. Sacramento		7.20	
11.35	2.35	11.41	205	Lv. Fresno	2.15	1.45	3.10
1.57	5.05	1.55	313	Lv. Bakersfield	11.30	11.32	12.16
7.15	10.50	7.00	482	Ar. Los Angeles	6.05	6.25	6.35

UNION PACIFIC RAILROAD

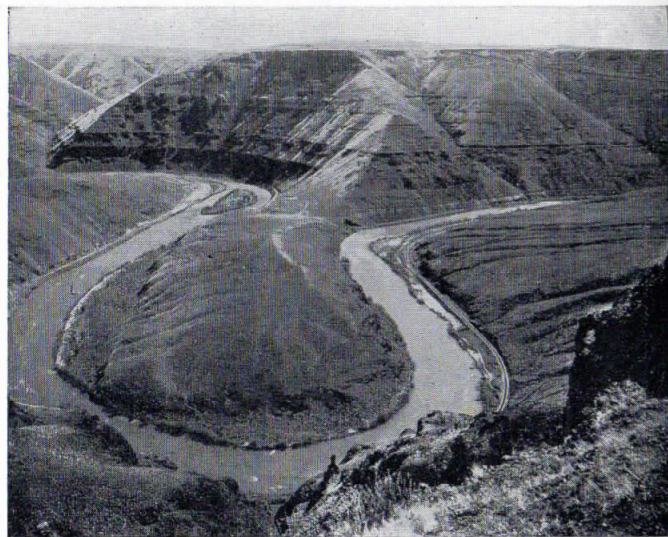
Read Down			Read Up			
18 Daily	106 Daily	12 Daily	17 Daily	105 Daily	11 Daily	
9.30	5.00	8.00	Lv. Portland	5.30	7.30	6.45
10.54	f 8.18	9.29	Ar. Hood River	3.45	f 6.01	4.44
11.30	6.50	10.00	Ar. The Dalles	3.10	5.30	4.10
3.00	9.08	12.55	Ar. Pendleton	11.05	3.10	12.50
6.45	12.10	4.25	Ar. Baker	7.07	11.53	9.09
10.06		7.41	Ar. Payette	5.43		7.37
10.18		7.56	Ar. Ontario	5.33		7.28
11.15	4.06	8.45	Ar. Nampa	4.25	10.08	6.25
11.50	4.30	9.25	Ar. Boise	3.45	9.40	5.45
4.55	8.20	2.50	Ar. Pocatello	10.35	5.55	12.15
8.50		6.55	Ar. Ogden	6.20		7.55
9.45		7.45	Ar. Salt Lake	5.30		7.00
			Ar. Cheyenne		7.45	
8.45		6.05	Ar. Denver	7.00		8.35

Light face figures denote A.M. time. Bold face figures denote P.M. time. Ar. Arrive. Lv. Leave. /Stop on Signal.



SPOKANE, PORTLAND AND SEATTLE RAILWAY SYSTEM

S. P. & S. RY. - OREGON TRUNK RY. - OREGON ELECTRIC RY. - (Subsidiaries of Northern Pacific and Great Northern Railways)



Horseshoe curve near Sinamox on the Oregon Trunk Railway



S. P. & S. Ry. passenger train passing Weather Bureau Rock 56 miles east of Portland, Oregon

Your Choice of... Three Daily Trains

Between PORTLAND and SPOKANE

See Page 4 For Detailed Schedules



WHATEVER
you're shipping
specify

safe, swift, sure



Toll Bridge over the Columbia River near Bingen-White Salmon on the S. P. & S. Ry. with Mt. Hood in the background.

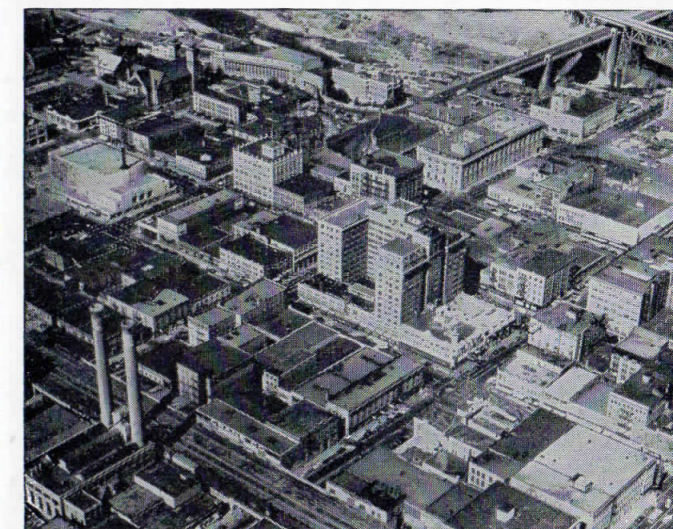


SPOKANE, PORTLAND AND SEATTLE RAILWAY SYSTEM

S. P. & S. RY. - OREGON TRUNK RY. - OREGON ELECTRIC RY. - (Subsidiaries of Northern Pacific and Great Northern Railways)

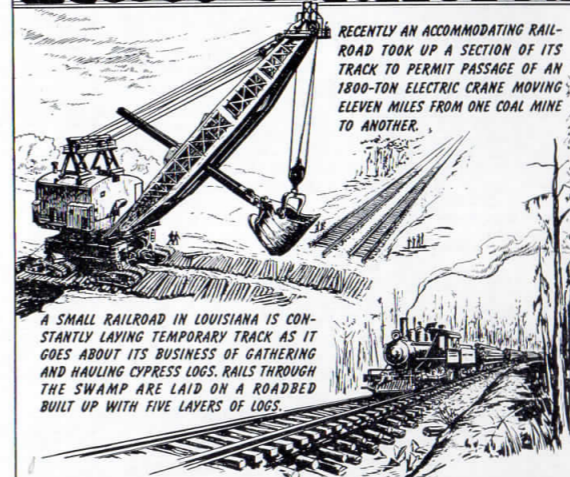


Airplane view of Vancouver, Washington and S. P. & S. bridge across Columbia River



Spokane - Queen City of the Inland Empire

Rail oddities



RECENTLY AN ACCOMMODATING RAILROAD TOOK UP A SECTION OF ITS TRACK TO PERMIT PASSAGE OF AN 1800-TON ELECTRIC CRANE MOVING ELEVEN MILES FROM ONE COAL MINE TO ANOTHER.

A SMALL RAILROAD IN LOUISIANA IS CONSTANTLY LAYING TEMPORARY TRACK AS IT GOES ABOUT ITS BUSINESS OF GATHERING AND HAULING CYPRESS LOGS. RAILS THROUGH THE SWAMP ARE LAID ON A ROADBED BUILT UP WITH FIVE LAYERS OF LOGS.

	1900	2¢ PER MILE
	1925	2.94¢ PER MILE
	1950	2.56¢ PER MILE

IN 1950 RAILROADS RECEIVED AN AVERAGE OF 2.56 CENTS PER MILE FOR CARRYING PASSENGERS, COMPARED WITH 2.94 CENTS IN 1925 AND 2 CENTS IN 1900.

ASSOCIATION OF AMERICAN RAILROADS 1151



Vital Link Between
SPOKANE, PORTLAND & CALIFORNIA
Portland, Pasco, Spokane and East



Portland - the Rose City



SPOKANE, PORTLAND AND SEATTLE RAILWAY SYSTEM

S. P. & S. RY.—OREGON TRUNK RY.—OREGON ELECTRIC RY.—(Subsidiaries of Northern Pacific and Great Northern Railways)

GENERAL INFORMATION

NOTE—This folder has been compiled with care, but may contain errors. Furthermore, it is sometimes necessary to change schedules without notice, trains shown are sometimes unavoidably delayed and connections missed. We hope none of our patrons will be inconvenienced by any of these causes, but the Railway Company will not be liable therefor.

ADJUSTMENT OF FARES. In cases of dispute with conductors or agents, passengers should pay fare required, take receipt and communicate with Auditor Revenue Accounts, S. P. & S. Ry., Box 571, Portland 7, Ore.

REDEMPTION OF TICKETS. Wholly unused tickets will be redeemed by selling agent. Partly used tickets will be redeemed under tariff regulations on application to Auditor Revenue Accounts.

TICKET LIMITS. Tickets will be honored for continuous passage to destination when presented not later than 4:00 a.m. standard time of the day following date of expiration as punched or otherwise shown on ticket. One-way tickets will be honored for passage within 30 days, round-trip tickets 6 months, in addition to date of sale.

FEDERAL TAX. Fares quoted in this folder do not include 10% Federal tax.

STOPOVERS will be allowed at all regular scheduled stops within limits, on application to Conductor.

CHILDREN'S FARES. Children under five years of age, when accompanied by parent or guardian, will be carried free of charge. Children five years of age and under twelve years of age will be charged one-half of the adult fares. Children of five and under twelve years of age who are not mature enough to take care of themselves when traveling alone must not be ticketed unless accompanied by parent or guardian. Children twelve years of age and over will be charged the adult fare.

MARK YOUR BAGGAGE. All baggage should show name and permanent address of owner. Appropriate gummed labels may be secured from Ticket or Baggage Agent.

HAND BAGGAGE in Pullmans is restricted to what can be conveniently placed in berth or at seat occupied by passenger.

BAGGAGE MAXIMUMS. Ordinarily 150 lbs. is free allowance for each adult ticket. No single piece of baggage exceeding 300 pounds in weight, or 72 inches in greatest dimension, or exceeding \$2500.00 in value will be checked. Free allowances are subject to tariff stipulation as to contents, weight, value and size.

BAGGAGE INSURANCE. A charge of only twenty cents is made for each hundred dollars value declared above \$100 for baggage checked for each adult passenger and above \$50 for each half-fare ticket. The maximum baggage valuation which may be insured on a single ticket is \$2500.

LIMITED LIABILITY. Excess value of baggage must be declared and paid for at time of checking.

BICYCLES (not motorcycles), baby carriages, dogs and guns are carried in baggage cars subject to tariff regulations.

LOST ARTICLES should be inquired for at the Baggage Office, Union Station, Portland, Oregon, or S. P. & S. Station, Spokane, Wash.

RESPONSIBILITY. No responsibility is assumed for unchecked articles left in stations or cars.

GENERAL OFFICES

Amer. Bank Bldg., 621 S.W. Morrison St., Box 571, Portland 7, Oregon

JOHN M. BUDD..... President St. Paul 1, Minn.
R. S. MACFARLANE..... Vice-President St. Paul 1, Minn.
A. C. MOORE..... Vice-President Portland, Oregon
J. J. HUNT..... Asst. Vice-President Portland, Oregon
GEO. F. EHLEN..... Traffic Manager Portland, Oregon
H. W. SHIELDS..... Asst. Traffic Manager Portland, Oregon
W. J. CROSBIE..... General Passenger Agent Portland, Oregon
E. H. BLOCK..... General Freight Agent Portland, Oregon
R. A. LAWRENCE..... Gen. Industrial Agent Portland, Oregon
A. H. STUCKERT..... Asst. General Industrial Agent Portland, Oregon
E. H. SHOWALTER..... General Manager Portland, Oregon
N. S. WESTERGARD..... Asst. to Gen. Mgr. Portland, Oregon
J. L. MONAHAN..... Superintendent Portland, Oregon
D. J. RITCHIE..... Gen'l Supt. Motive Power Vancouver, Wash.
C. F. THOMAS..... Secretary and Chief Engineer Portland, Oregon
T. L. PADDEN..... Treasurer Portland, Oregon
W. T. COWAN..... Purchasing Agent Portland, Oregon
L. W. ALBERTSON..... Comptroller Portland, Oregon
H. L. KENDALL..... Auditor Disbursements Portland, Oregon
E. C. MICHELSEN..... Auditor Revenue Accounts Portland, Oregon
C. E. BROEDER..... Auditor Misc. Accounts Portland, Oregon
G. C. GRAHAM..... Auditor Machine Section Portland, Oregon
W. J. SHEEHAN..... Gen'l Claim Agent Portland, Oregon
W. P. GARRETT..... Right of Way and Tax Agent Portland, Oregon
H. WENTZIEN..... Superintendent Dining Cars Portland, Oregon

Representatives

ALBANY, ORE...... T. S. BRACE (Phone Wabash 61546 or 61547)..... Agt., O. E. Ry. Sta.

ASTORIA, ORE...... R. C. BAKER, 20th & Commercial (Phone 113) Agt.

BEND, ORE...... E. A. KOSKELA (Phone 1360) Agt. Passenger Sta.
 G. A. SILKWORTH (Phone 438)..... General Agent

EUGENE, ORE...... W. C. BODNO (Ph. 5-8757, 5-8758)..... Agt., O.E.Ry.Sta.
 W. Z. MYERS (Phone 5-8750, 5-8759)..... General Agt.
 J. H. TAYLOR..... Traveling Frt. & Pass. Agent

HILLSBORO, ORE...... H. SWENSON (Ph. 1944)..... Agt., O.E.Ry.Frt. Depot

JUNCTION CITY, ORE...... L. W. MALLORY (Ph. M. 382) Agt., O.E.Ry.Frt. Depot

LOS ANGELES 14, CALIF.
 Great Northern Railway Room 317 510 West Sixth St., Ph. Madison 9-1473
 S. L. WILLIAMS..... District Passenger Agent
 Northern Pacific Railway 510 West Sixth St., Phone Trinity 2321
 D. F. WALKER..... General Agent

OAKLAND 12, CAL.
 Great Northern Railway 807 Financial Center, Ph. Templebar 2-7672
 C. G. ALEXANDER..... District Passenger Agent
 Northern Pacific Railway..... 611 First Western Bank Bldg.
 Ph. Glencourt 1-8717

PORTLAND 7, ORE...... SPENCER A. JEWELL..... General Agent
 A. C. STICKLEY..... GAPD (SP&S-NP. Rys.)
 439 S.W. 6th Ave., Telephone CAPITOL 2-1311
 A. W. GUSEY..... GAPD (SP&S-GN. Rys.)
 607 S.W. Washington St., Telephone CA 3-7273
 F. M. SMITH, Ticket Agt., Union Station, Foot of N.W. 6th Ave., Telephone Capitol 7-3421

H. K. HALLGREN..... District Passenger Agent
 H. F. ERZ..... General Agent, Freight Dept.
 CLARENCE JOHNSON..... Trav. Frt. & Pass. Agent
 J. W. JONES..... City Freight Agent
 G. E. SKINNER..... City Freight Agent
 H. W. MILLER..... City Freight Agent
 P. H. BRINGMANN, Local Freight Agent, N. W. 11th and Hoyt, Phone Capitol 8-9111

REDMOND, ORE...... P. V. McMAHON (Phone 13)..... Agt., Passenger Sta.

SACRAMENTO 14, CAL...... R. L. LAMB, Gen. Agt., G. N. Ry., 223 Forum Bldg.

ST. HELENS, ORE...... J. L. McGRAW (Phone 658)..... Agt., S.P.&S. Station

SALEM, ORE...... J. D. SURLS (Ph. 3-3129) Agt., O.E.Ry. Frt. Depot

SAN FRANCISCO 5, CAL.
 Northern Pacific Railway 681 Market St. Phone Sutter 1-1078
 DANIEL TINNEY..... General Agent
 Great Northern Railway 679 Market St. Phone Sutter 1-6051; 1-6052
 A. L. SCOTT..... Ass't. Gen. Passenger Agent
 J. E. ROWE (Ph. 45)..... Agent, S.P.&S. Ry. Sta.

SEASIDE, ORE...... R. E. HENDERSHOTT..... General Agent
 D. W. MORRISON, Traveling Frt. & Pass. Agt.
 925 Old National Bank Building, Ph. Main 4238
 RAY L. DUBOIS, General Agent, Passenger Dept.,
 Davenport Hotel, Phone Main 5141
 C. G. SHEFFIELD, City Passenger & Ticket Agt.,
 Sprague Ave. & Wall St. Phone Main 5321
 B. B. McCANNON..... Ticket Agent, Gt. Nor. Ry. Sta.

VANCOUVER, WASH...... J. CONDRA, Agt. (Ph. Oxford 3-1491), S.P.&S.R.Sta.
 C. M. WAGNER (Phone Oxford 5-2941)..... Pass. Sta.

Agents of the Great Northern and Northern Pacific Rys. throughout the United States are the direct representatives of the Spokane, Portland and Seattle Railway Co., Oregon Trunk Railway and Oregon Electric Railway Co.

