

Along the Columbia River on the S. P. & S. Railway near Cooks, Washington



MAY 1, 1955  
Subject to change without notice



*The Northwest's Own Railway*  
**THROUGH SERVICE**  
VIA

NORTH COAST  
LIMITED

EMPIRE  
BUILDER



# TIME TABLES

*Pacific Standard Time*

TRAVEL THE  
**COLUMBIA RIVER**  
**SCENIC ROUTE**  
THROUGH THE  
**CASCADE RANGE**

MAY 1, 1955  
Subject to change without notice



*The Northwest's Own Railway*  
**THROUGH SERVICE**  
VIA

NORTH COAST  
LIMITED

EMPIRE  
BUILDER



# TIME TABLES

*Pacific Standard Time*

TRAVEL THE  
**COLUMBIA RIVER**  
**SCENIC ROUTE**  
THROUGH THE  
**CASCADE RANGE**



SPOKANE, PORTLAND AND SEATTLE RAILWAY SYSTEM

S. P. & S. RY. - OREGON TRUNK RY. - OREGON ELECTRIC RY. - (Subsidiaries of Northern Pacific and Great Northern Railways)

TRANSCONTINENTAL TRAIN SERVICE - BETWEEN PORTLAND, PASCO AND EAST

SPOKANE, PORTLAND AND SEATTLE, NORTHERN PACIFIC AND CHICAGO, BURLINGTON AND QUINCY RAILWAYS

West Bound, Read Down Eastbound, Read Up

Table with multiple columns for train numbers, routes, and times. Includes sections for Chicago, Burlington and Quincy Railway, Northern Pacific Railway, and Spokane, Portland and Seattle Railway.

Table titled 'C.B. & Q. Connections at Billings for Denver & Mo. River Points' showing routes to St. Louis, Kansas City, St. Joseph, Omaha, Lincoln, and Denver.

Notes and instructions for passengers, including stop-off points and bus services.

EQUIPMENT

VISTA-DOME NORTH COAST LIMITED BETWEEN CHICAGO AND PORTLAND All Lightweight Equipment S. P. & S. 1-2, N. P. 25-26, C. B. & Q. 25-26

OBSERVATION LOUNGE-BUFFET CAR - Between Pasco and Portland. (Car 10 westbound, Car 20 eastbound.)

OBSERVATION LOUNGE-SLEEPING CAR - Between Chicago and Pasco. Four bedrooms, 1 compartment, spacious lounge, radio, library, writing desk. Buffet service. (259 westbound, 269 eastbound.)

VISTA-DOME SLEEPING CAR - Between Chicago and Portland. Newest type all-room car. 4 Roomette, 4 Single and 4 Double Bedrooms. (258 westbound, 268 eastbound.)

STANDARD SLEEPING CAR - Between Chicago and Portland. Newest type all-room car. 3 bedrooms, 1 compartment, 6 roomettes, 8 duplex roomettes. (257 westbound, 267 eastbound.)

VISTA-DOME COACH - Between Chicago and Portland. Chaise lounge "sleepy hollow" seats with leg rests for reclining full length. (C252 westbound, C262 eastbound). Seats reserved in advance. No extra charge.

COACH-BUFFET-LOUNGE - Between Chicago and Pasco. De Luxe accommodations expressly for coach passengers. Writing desk, radio, magazines. Sandwiches and beverages.

DINING CAR SERVICE - Between Chicago and Portland. Club breakfasts, \$1.25 to \$1.95; Table d'hote dinner, \$2.90; Table d'hote luncheon, \$2.10. Special plate luncheons and dinners, \$1.80. Also a la carte service.

TICKETS - All classes of regular and reduced rate rail tickets will be honored for passage on the North Coast Limited.

THE MAINSTREETER

BETWEEN CHICAGO AND PORTLAND S. P. & S. 3-4, N. P. 1-2, C. B. & Q. 47-48

OBSERVATION LOUNGE-BUFFET CAR - Between Spokane and Portland. (Car 30 westbound, Car 40 eastbound.)

OBSERVATION LOUNGE-BUFFET CAR - Between St. Paul and Pasco. 8 Sections. (Car 106 westbound, car 206 eastbound.)

STANDARD SLEEPING CARS - Between Chicago and Pasco 8 Duplex Roomettes, 3 Double Bedrooms, 1 Compartment and 6 Roomettes. (105 westbound, 205 eastbound.) Passengers will make station taxicab transfer at Spokane at no additional cost to modern standard cars from and to Chicago.

DINING CAR SERVICE - Between St. Paul and Pasco.

RECLINING SEAT COACHES - Between Chicago and Pasco. Between Spokane and Portland.

S. P. & S. No. 5-6, (Diesel Power), N. P. No. 5-6 COLUMBIA RIVER EXPRESS BETWEEN SPOKANE, PASCO AND PORTLAND

Deluxe reclining chair car, Pasco-Portland. Cafe car and deluxe coaches, Spokane and Pasco.



SPOKANE, PORTLAND AND SEATTLE RAILWAY SYSTEM

S. P. & S. RY. - OREGON TRUNK RY. - OREGON ELECTRIC RY. - (Subsidiaries of Northern Pacific and Great Northern Railways)

TRANSCONTINENTAL TRAIN SERVICE - BETWEEN PORTLAND, SPOKANE AND EAST

VIA CHICAGO, BURLINGTON & QUINCY AND GREAT NORTHERN, SPOKANE, PORTLAND AND SEATTLE RAILWAYS

EQUIPMENT

THE STREAMLINED EMPIRE BUILDER (Lightweight Streamlined Equipment Only) CHICAGO-PORTLAND NO EXTRA FARE CB&Q 49-44, GN 1-2, SP&S 1-2

Standard Sleeper-Club-Lounge car with 6 Roomettes, 3 Double Bedrooms, 25 lounge seats between Spokane and Portland. (Car 10 Westbound, Car 20 Eastbound.)

Observation-Lounge car between Chicago and Spokane. Buffet service and radio reception.

Standard Sleepers offering seven latest types of Pullman accommodations. Drawing Rooms, Compartments, Double Bedrooms, Roomettes, Duplex-Roomettes, Lower and Upper Berths. Between Chicago and Portland, two sleepers (11-12 Westbound, 21-22 Eastbound). Advance reservations of Pullman accommodations may be made at any time prior to scheduled departure except as follows: Pullman space on the "Empire Builder" for intermediate travel between any two stations west of Havre or between any two stations east of Havre may not be reserved until 24 hours prior to train departure time eastbound from Portland or westbound from Chicago.

Streamlined Day-Nite Coaches. Reclining seats with leg rests forming a couch for sleeping. Individual reading lights. Commodious lounge and dressing rooms—two lounges for women with curtain dressing alcoves. Radio reception. Between Chicago and Portland one 48-seat coach (103 Westbound, 203 Eastbound). Advance coach seat reservations should be made so that definite coach seat assignment may be obtained before departure. All seats reserved in advance (including seats for children under 5 years of age) at no extra charge.

DeLuxe Coach between Spokane and Portland, 56 reclining seats. (Seats not reserved.)

Buffet service between Spokane and Portland.

The Ranch Coffee Shop-Lounge Car - Between Chicago and Spokane. Lounge facilities for all passengers including coach passengers. Radio reception. Coffee shop with counter and table service at economical meal prices. Club breakfasts: fruits and fruit juices, cereals, eggs, toast, rolls, doughnuts and beverages. Plate luncheons and dinners. Soups, sandwiches, salads, desserts and beverages available throughout the day.

Dining car with the most modern furnishings, decor and semi-private dining sections between Chicago and Portland. Radio reception. Traditional famous Great Northern meals. Club breakfasts, plate luncheons, table d'hote luncheons, plate dinners, table d'hote dinners. Also a la carte service for all meals.

To avoid standing in line for dinner, passengers have the choice of one hour dining periods beginning at 5 P.M. Passenger Representatives on the train arrange dinner reservations.

Tickets. Tickets endorsed Clergy, Charity, Employee, D.V.S., V.A.H., Blind and Attendant, Blind and Guide Dog, Circus, Show, Banana Messenger, Drover's or Caretaker's tickets and Livestock Contracts will not be honored.

Baggage. Limited amount of checked baggage will be handled.

Westbound, Read Down Eastbound, Read Up

Table with multiple columns for train numbers, routes, and times. Includes sections for Chicago, Burlington and Quincy Railway, Great Northern Ry., Spokane, Portland and Seattle Railway, and Streamlined Western Star.

THE STREAMLINED WESTERN STAR (Lightweight Streamlined Equipment) CHICAGO-PORTLAND NO EXTRA FARE CB&Q 47-48, GN 3-4, SP&S 3-4 ALL CLASSES OF TICKETS HONORED

Observation-Lounge-Buffet Car between Spokane and Portland—contains 8 Sections (Car 30 Westbound, Car 40 Eastbound).

Observation-Lounge Car between Chicago and Spokane—Buffet service and radio reception. Also contains 1 Drawing Room and 2 Double Bedrooms (39 Westbound, 49 Eastbound).

Standard Sleeping Cars offering modern Pullman accommodations between Chicago and Portland, one car containing 4 Sections, 8 Duplex Roomettes and 4 Double Bedrooms. Double Bedrooms are connecting and may be sold ensuite at drawing room rate (32 Westbound, 42 Eastbound).

Streamliner Day-Nite Coaches between Chicago and Spokane. Reclining seats with leg rests forming a couch for sleeping. Wide windows and individual reading lights, modern lounge and dressing rooms. Radio reception. Deluxe coaches between Spokane and Portland. (Seats reserved June 14 to Sept. 9 only.)

Buffet Service between Spokane and Portland.

Coffee Shop Car between St. Paul and Spokane. Selling beer, liquor, fruit, candy bars and magazines throughout the day.

Dining Car Service between St. Paul and Spokane. Traditional famous Great Northern meals. Club breakfasts, plate luncheons, table d'hote luncheons, plate dinners, table d'hote dinners. Also a la carte service for all meals.

Notes and instructions for passengers, including stop-off points and bus services.



SPOKANE, PORTLAND AND SEATTLE RAILWAY SYSTEM

S. P. & S. RY.—OREGON TRUNK RY.—OREGON ELECTRIC RY.—(Subsidiaries of Northern Pacific and Great Northern Railways)

PORTLAND — WISHRAM — PASCO — SPOKANE TRAINS

Table with columns for Westbound, Read Down and Eastbound, Read Up. Includes train numbers, times, and station names like Spokane, Portland, and Seattle.

FOR THROUGH SERVICE AND CONSIST OF ALL TRAINS, SEE PRECEDING PAGES 2 and 3.

A TRANS-CONTINENTAL SYSTEM OF RAILWAYS THROUGH AMERICA'S WONDERLAND

Traversing the northern states between the Pacific Northwest and Chicago presents a veritable wonderland offering passengers a splendid variety of ever-changing scenery.

Over these lines, between Portland and Chicago, are operated four of America's famous trains, the Streamlined

Empire Builder and the Streamlined Western Star, via S.P.&S. Spokane, G.N. St. Paul, C.B. & Q. Chicago, and the Streamlined North Coast Limited and The Mainstreeter via S. P. & S. Pasco, N. P. St. Paul and C. B. & Q. Chicago where connections are made to all points east and south.

These trains provide passengers with every feature of modern railway travel for their comfort, and pleasure.

Light face figures denote A.M. time. Bold face figures denote P.M. time. Ar. Arrive. Lv. Leave. /Stop on Signal.



SPOKANE, PORTLAND AND SEATTLE RAILWAY SYSTEM

S. P. & S. RY.—OREGON TRUNK RY.—OREGON ELECTRIC RY.—(Subsidiaries of Northern Pacific and Great Northern Railways)

PORTLAND - REDMOND - BEND TRAINS

Table with columns for Read Down and Read Up. Includes train numbers, times, and station names like Bend, Deschutes, Redmond, etc.

PORTLAND — ST. HELENS

RAINIER—ASTORIA—CLATSOP BEACH PASSENGER SERVICE

Table with columns for Westbound—Read Down and Eastbound—Read Up. Includes times and station names like Portland, Astoria, Clatskanie, etc.

S. P. & S. Ry. Local tickets will not be issued or honored on Pacific Greyhound Lines between above stations. Interline tickets routed S. P. & S. Ry. between above stations and stations east of Portland on or via S. P. & S. Ry. will be honored on Pacific Greyhound Lines.

FREIGHT SERVICE ONLY

is operated on the following Branches S. P. & S. Railway

GOLDENDALE BR.

Table with columns for Miles and Stations. Lists stations like Lyle, Pitt, Klickitat, etc.

KEASEY BRANCH

Table with columns for Miles and Stations. Lists stations like Portland, Linnton, Burlington, etc.

HAMMOND BRANCH

Table with columns for Miles and Stations. Lists stations like Warrenton, Flavel, Hammond.

Oregon Electric Railway

PORTLAND-SALEM-ALBANY-EUGENE LINE

Table with columns for Miles and Stations. Lists stations like Portland, Forest Grove, Beaverton, etc.

FOREST GROVE BRANCH

Table with columns for Miles and Stations. Lists stations like Forest Grove, Orenco, Hillsboro, etc.

SANTIAM BRANCH

Table with columns for Miles and Stations. Lists stations like Albany, Froman, Fry, etc.

EQUIPMENT BETWEEN PORTLAND and BEND

Trains Nos. 4-102 and 105-3. Coaches daily between Portland and Wishram and Daily except Sunday between Wishram and Bend. Observation Lounge Buffet cars daily between Portland and Wishram. See pages 2, 3 and 4.

RAIL TRAVEL CREDIT CARD PLAN

permits purchase of Rail and Pullman tickets from any S. P. & S. Ry. Co. agent on Credit by securing a Credit Card from the Rail Travel Credit Agency, Room 436 Union Station, Chicago, Ill.

"DRIVURSELF" RAIL-AUTO SERVICE

provides a new automobile at your destination or stop over point. Ask the agent for further details on any of the above plans.

Western Union advertisement featuring a rooster logo and the text 'Wherever you're headed always Telegraph'.

Light face figures denote A.M. time. Bold face figures denote P.M. time. Ar. Arrive. Lv. Leave. /Stop on Signal. t Telegraph Office.

PACIFIC TRAILWAYS

Table with columns for Read Down and Read Up. Includes times and station names like Portland, Bend, Astoria, etc.

Rail tickets routed via OT — S. P. & S. Railways from or to Central Oregon points will be honored to or from Portland, Oregon by the Mt. Hood Stages (Pacific Trailways). Ask agent for details. \* Except Sundays and holidays.

FREIGHT SERVICE

Route your freight shipments via the Spokane, Portland and Seattle Railway for fast and dependable service—between Portland, Astoria, Pasco, Spokane, Yakima, Walla Walla, Pendleton, Lewiston, Bend and all points east and south.

Let Us Handle Your Transportation Problems

FREIGHT SERVICE ONLY

Portland — St. Helens — Astoria Line

Table with columns for Miles and Stations. Lists stations like Portland, Linnton, Scappoose, etc.

PASSENGER SERVICE

Operated by PACIFIC GREYHOUND LINES

SEE SCHEDULES ABOVE

Light face figures denote A.M. time. Bold face figures denote P.M. time. Ar. Arrive. Lv. Leave. /Stop on Signal. t Telegraph Office.



# SPOKANE, PORTLAND AND SEATTLE RAILWAY SYSTEM

S. P. & S. RY.—OREGON TRUNK RY.—OREGON ELECTRIC RY.—(Subsidiaries of Northern Pacific and Great Northern Railways)

## PORTLAND - PUGET SOUND - BRITISH COLUMBIA

Northern Pacific Ry. - Great Northern Ry. - Union Pacific R. R.

Table with columns for Northbound-Read Down and Southbound-Read Up, listing stations like Portland, Un. Sta, Vancouver, Wn., Kalama, Kelso-Longview, Castle Rock, Chehalis, Centralia, East Olympia, Tacoma, Seattle, Everett, Bellingham, and Vancouver, B.C.

## SOUTHERN PACIFIC COMPANY

Southbound—Read Down Northbound—Read Up

Table with columns for Southbound-Read Down and Northbound-Read Up, listing stations like Portland, Albany, Corvallis, Eugene, Klamath Falls, Cottage Grove, Roseburg, Grants Pass, Medford, Ashland, Redding, and Sacramento.

a—via P G Lines Bus from and to Albany.

### EQUIPMENT OF TRAINS

Trains 9-10, Shasta Daylight—Streamlined Air Conditioned Train—Radio Parlor Obs. Reclining Chair Cars, Diner, Coffee Shop and Tavern Car. Reserved seat Chair Car. Train 58 will take transfers from No. 9 at Martinez. Train 57 will make transfer to No. 10 at Oakland, 16th Street. Train 11-12, Cascade—(Streamlined, Air Conditioned). Between Portland and San Francisco. Standard sleeping cars with drawing rooms, compartments, bedrooms, roomettes, lounge and dining car. Reserved seat chair car. (Telephone service on Trains 11-12.) Train 19-20, Klamath—(Air Conditioned). Between Portland and San Francisco. Standard sleeping cars, diner, coaches and reclining chair cars. Train 329-330, Rogue River—Between Portland and Ashland. Standard Air Conditioned sleeping car, sections, compartments and drawing room and chair car.

## CONNECTIONS AT SPOKANE AND PASCO

Table showing bus connections between Spokane and Pasco, listing bus numbers and destinations like Deer Park, Chewelah, Colville, Kettle Falls, Northport, Trail, B.C., and Nelson.

Table showing freight service rates for Great Northern Ry., SP&S, and Northern Pacific, listing stations like Bend, Klamath Falls, Bieber, Walla Walla, Pasco, Attalia, Eureka, and Walla Walla.

## MARK YOUR BAGGAGE

All baggage, whether checked or carried with you, should be plainly marked with your name and permanent address. This will insure prompt recovery should it become lost or go astray. Remove all obsolete labels and addresses.

JEWELRY, CURRENCY, VALUABLE PAPERS and LIQUIDS should not be placed in baggage intended for checking. The railway will not assume responsibility for loss of, or damage to such articles.

Table showing baggage rates for Northern Pacific, listing stations like Portland, Spokane, Spangle, Rosalia, Oakesdale, Garfield, Palouse, Pullman, Moscow, Kendrick, Juliaetta, and Lewiston.

Table showing rates for the San Francisco - Los Angeles - Coast Line and San Francisco - Los Angeles - Valley Line, listing stations like San Francisco, San Jose, San Luis Obispo, Santa Barbara, Los Angeles, and Sacramento.

## UNION PACIFIC RAILROAD

Table showing rates for the Union Pacific Railroad, listing stations like Portland, Hood River, The Dalles, Pendleton, Baker, Payette, Ontario, Nampa, Boise, Pocatello, Ogden, Salt Lake, Cheyenne, and Denver.

# SPOKANE, PORTLAND AND SEATTLE RAILWAY SYSTEM

S. P. & S. RY.—OREGON TRUNK RY.—OREGON ELECTRIC RY.—(Subsidiaries of Northern Pacific and Great Northern Railways)



## Sleeping, Parlor Car and Reserved Seat Fares

Federal Tax Extra

For information only. Subject to change without notice.

Table showing sleeping, parlor car, and reserved seat fares between various cities including Billings, Bingen-Wa., Boston, Bozeman, Buffalo, Butte, Camas, Chicago, Cincinnati, Cleveland, Denver, Detroit, Duluth, Eugene, Fargo, Gardiner, Glacier Park, Grants Pass, Great Falls, Havre, Helena, Kansas City, Klamath Falls, Livingston, Los Angeles, Louisville, and Lyle.

### RATES FOR SLEEPING CAR ACCOMODATIONS

Table showing rates for sleeping car accommodations, including Roomette, Duplex Single Room, Bedroom, Bedroom Suite, Compartment, and Drawing Room, with rates for one and two persons.

## INDUSTRIAL LOCATIONS

National concerns continue to come to the Pacific Northwest and are choosing the Portland area as a location for their distribution warehouses. This is not only because of the tremendous growth in population but because of the strategic location for distribution throughout the Pacific Northwest, Alaska, the Hawaiian Islands, and the Orient. In addition, industries requiring lower power costs, better labor, or climatic working conditions, continue to locate throughout the area.

The SP&S RAILWAY SYSTEM owns and serves a great many industrial locations along the Columbia and Willamette Rivers as well as in the cities of both Oregon and Washington. Contact the Industrial Department for information.

R. W. WEST  
General Industrial Agent  
American Bank Building  
P. O. Box 571  
Portland 7, Oregon

Through sleeping cars not operated in all trains; fare applies for continuous trip via direct connections. A duplex roomette is a single private room with wash basin and toilet; a bedroom contains lower and upper berth, wardrobe and complete toilet facilities; a compartment is a private room with lower and upper berths, wash basin and toilet; a drawing room has a divan berth in addition.

Exclusive occupancy of a drawing room, two bedrooms in suite or a bedroom and compartment en suite requires 1 1/4 adult rail tickets, or their equivalent; for compartment, duplex-roomette, single or double bedroom, one adult ticket between S. P. & S. - N. P. - G. N. and connections; 1-1/10 tickets between certain other lines; for section, one adult ticket for each berth.



# SPOKANE, PORTLAND AND SEATTLE RAILWAY SYSTEM

S. P. & S. RY. - OREGON TRUNK RY. - OREGON ELECTRIC RY. - (Subsidiaries of Northern Pacific and Great Northern Railways)



Horseshoe curve near Sinamox on the Oregon Trunk Railway



Astor Column, Astoria, Oregon



Toll Bridge over the Columbia River near Bingen-White Salmon on the S. P. & S. Ry. with Mt. Hood in the background.

Your Choice of... Three Daily Trains

Between PORTLAND and SPOKANE

See Page 4 For Detailed Schedules

**FAST DELIVERY**

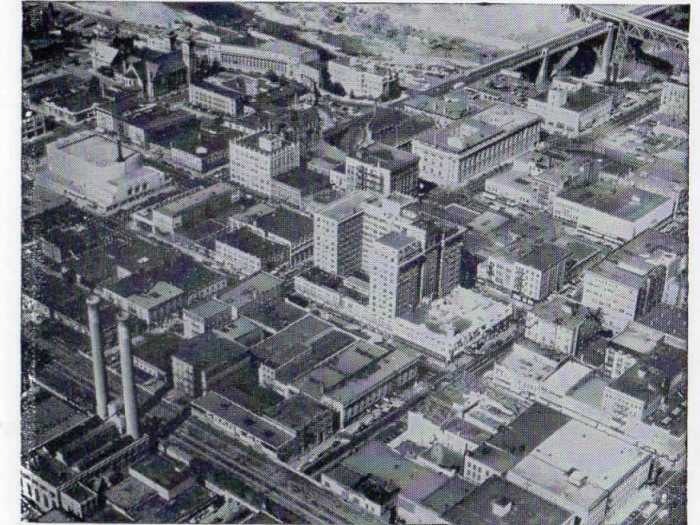
For prompt pickup and fast delivery (within established vehicle limits everywhere) specify Railway Express

# SPOKANE, PORTLAND AND SEATTLE RAILWAY SYSTEM

S. P. & S. RY. - OREGON TRUNK RY. - OREGON ELECTRIC RY. - (Subsidiaries of Northern Pacific and Great Northern Railways)



Airplane view of Vancouver, Washington and S. P. & S. bridge across Columbia River

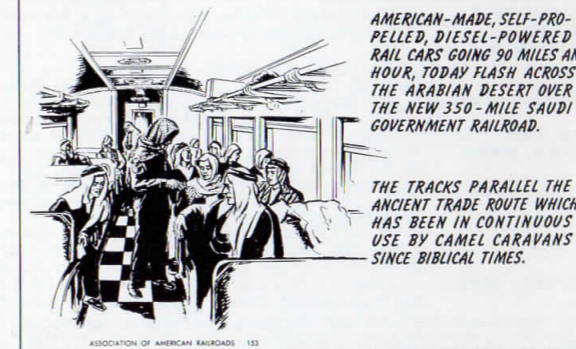


Spokane - Queen City of the Inland Empire

## Rail oddities



ALADDIN - WITH A SPECIAL RUB OF HIS MAGIC LAMP - COULD HARDLY HAVE CONJURED UP ANYTHING LIKE THIS.



AMERICAN-MADE, SELF-PROPELLED, DIESEL-POWERED RAIL CARS GOING 90 MILES AN HOUR, TODAY FLASH ACROSS THE ARABIAN DESERT OVER THE NEW 350-MILE SAUDI GOVERNMENT RAILROAD.

THE TRACKS PARALLEL THE ANCIENT TRADE ROUTE WHICH HAS BEEN IN CONTINUOUS USE BY CAMEL CARAVANS SINCE BIBLICAL TIMES.



Vital Link Between SPOKANE, PORTLAND & CALIFORNIA  
Portland, Pasco, Spokane and East



Portland - the Rose City



# SPOKANE, PORTLAND AND SEATTLE RAILWAY SYSTEM

S. P. & S. RY.—OREGON TRUNK RY.—OREGON ELECTRIC RY.—(Subsidiaries of Northern Pacific and Great Northern Railways)

## GENERAL INFORMATION

**NOTE**—This folder has been compiled with care, but may contain errors. Furthermore, it is sometimes necessary to change schedules without notice, trains shown are sometimes unavoidably delayed and connections missed. We hope none of our patrons will be inconvenienced by any of these causes, but the Railway Company will not be liable therefor.

**ADJUSTMENT OF FARES.** In cases of dispute with conductors or agents, passengers should pay fare required, take receipt and communicate with Auditor Revenue Accounts, S. P. & S. Ry., Box 571, Portland 7, Ore.

**REDEMPTION OF TICKETS.** Wholly unused tickets will be redeemed by selling agent. Partly used tickets will be redeemed under tariff regulations on application to Auditor Revenue Accounts.

**TICKET LIMITS.** Tickets will be honored for continuous passage to destination when presented not later than 4:00 a.m. standard time of the day following date of expiration as punched or otherwise shown on ticket. One-way tickets will be honored for passage within 30 days, round-trip tickets 6 months, in addition to date of sale.

**FEDERAL TAX.** Fares quoted in this folder do not include 10% Federal tax.

**STOPOVERS** will be allowed at all regular scheduled stops within limits, on application to Conductor.

**CHILDREN'S FARES.** Children under five years of age, when accompanied by parent or guardian, will be carried free of charge. Children five years of age and under twelve years of age will be charged one-half of the adult fares. Children of five and under twelve years of age who are not mature enough to take care of themselves when traveling alone must not be ticketed unless accompanied by parent or guardian. Children twelve years of age and over will be charged the adult fare.

**MARK YOUR BAGGAGE.** All baggage should show name and permanent address of owner. Appropriate gummed labels may be secured from Ticket or Baggage Agent.

**HAND BAGGAGE** in Pullmans is restricted to what can be conveniently placed in berth or at seat occupied by passenger.

**BAGGAGE MAXIMUMS.** Ordinarily 150 lbs. is free allowance for each adult ticket. No single piece of baggage exceeding 300 pounds in weight, or 72 inches in greatest dimension, or exceeding \$2500.00 in value will be checked. Free allowances are subject to tariff stipulation as to contents, weight, value and size.

**BAGGAGE INSURANCE.** A charge of only twenty cents is made for each hundred dollars value declared above \$100 for baggage checked for each adult passenger and above \$50 for each half-fare ticket. The maximum baggage valuation which may be insured on a single ticket is \$2500.

**LIMITED LIABILITY.** Excess value of baggage must be declared and paid for at time of checking.

**BICYCLES** (not motorcycles), baby carriages, dogs and guns are carried in baggage cars subject to tariff regulations.

**LOST ARTICLES** should be inquired for at the Baggage Office, Union Station, Portland, Oregon, or S. P. & S. Station, Spokane, Wash.

**RESPONSIBILITY.** No responsibility is assumed for unchecked articles left in stations or cars.

## GENERAL OFFICES

Amer. Bank Bldg., 621 S.W. Morrison St., Box 571, Portland 7, Oregon

R. S. MACFARLANE	President	St. Paul 1, Minn.
JOHN M. BUDD	Vice-President	St. Paul 1, Minn.
A. J. HUNT	Vice-President	Portland, Oregon
GEO. F. EHLEN	Asst. to Vice-Pres. & Gen. Mgr.	Portland, Oregon
H. W. SHIELDS	Asst. Traffic Manager	Portland, Oregon
W. J. CROSBIE	General Passenger Agent	Portland, Oregon
E. H. BLOCK	General Freight Agent	Portland, Oregon
R. W. WEST	Gen. Industrial Agent	Portland, Oregon
F. J. HARRIS	Asst. General Industrial Agent	Portland, Oregon
E. H. SHOWALTER	General Manager	Portland, Oregon
N. S. WESTERGARD	Asst. to Gen. Mgr.	Portland, Oregon
J. L. MONAHAN	Superintendent	Portland, Oregon
C. E. BARNES	Gen'l Supt. Motive Power	Vancouver, Wash.
C. F. THOMAS	Secretary and Chief Engineer	Portland, Oregon
T. L. PADDEN	Treasurer	Portland, Oregon
G. R. WILLIAMS	Purchasing Agent	Portland, Oregon
L. W. ALBERTSON	Comptroller	Portland, Oregon
H. L. KENDALL	Auditor Disbursements	Portland, Oregon
E. C. MICHELSEN	Auditor Revenue Accounts	Portland, Oregon
C. E. BROEDER	Auditor Misl. Accounts	Portland, Oregon
G. C. GRAHAM	Auditor Machine Section	Portland, Oregon
W. J. SHEEHAN	Gen'l Claim Agent	Portland, Oregon
W. P. GARRETT	Right of Way and Tax Agent	Portland, Oregon
W. T. COWAN	Superintendent Dining Cars	Portland, Oregon

## Representatives

ALBANY, ORE. .... T. S. BRACE (Phone Wabash 61546 or 61547) . . . . . Agt., O. E. Ry. Sta.

ASTORIA, ORE. .... R. C. BAKER, 20th & Commercial (Phone 113) . Agt.

BEND, ORE. .... E. A. KOSKELA (Phone 1360) Agt. Passenger Sta.  
G. A. SILKWORTH (Phone 438) . . . . . General Agent

EUGENE, ORE. .... W. C. BODNO (Ph. 5-8757, 5-8758) . . . . . Agt., O.E.Ry.Sta.  
W. Z. MYERS (Phone 5-8750, 5-8759) . . . . . General Agt.  
J. H. TAYLOR . . . . . Traveling Frt. & Pass. Agent

HILLSBORO, ORE. .... H. SWENSON (Ph. 1944) . . . . . Agt., O.E.Ry.Frt. Depot

JUNCTION CITY, ORE. .... L. W. MALLORY (Ph. M. 382) . Agt., O.E.Ry.Frt. Depot

LOS ANGELES 14, CALIF.  
Great Northern Railway Room 317 510 West Sixth St., Ph. Madison 9-1473  
S. L. WILLIAMS . . . . . District Passenger Agent  
Northern Pacific Railway 510 West Sixth St., Phone Trinity 2321  
D. F. WALKER . . . . . General Agent

OAKLAND 12, CAL.  
Great Northern Railway 807 Financial Center, Ph. Templebar 2-7672  
C. G. ALEXANDER . . . . . District Passenger Agent  
Northern Pacific Railway 815 Central Bank Bldg., Ph. Glencourt 1-8717  
SPENCER A. JEWELL . . . . . General Agent

PORTLAND 7, ORE. .... A. C. STICKLEY . . . . . GAPD (SP&S-NP. Rys.)  
439 S.W. 6th Ave., Telephone Capitol 1311  
A. W. GUSEY . . . . . GAPD (SP&S-GN. Rys.)  
607 S.W. Washington St., Telephone BE. 7273  
J. L. MILLER, Ticket Agt., Union Station, Foot of N.W. 6th Ave., Telephone Broadway 3421

1101 American Bank Building  
Phone ATwater 9111  
H. K. HALLGREN . . . . . District Passenger Agent  
R. A. LAWRENCE . . . . . General Agent, Freight Dept.  
CLARENCE JOHNSON . . . . . Trav. Frt. & Pass. Agent  
ALEX H. STUCKERT . . . . . City Freight Agent  
J. W. JONES . . . . . City Freight Agent  
G. E. SKINNER . . . . . City Freight Agent  
P. H. BRINGMANN, Local Freight Agent, N. W. 11th and Hoyt, Phone ATwater 9111

REDMOND, ORE. .... L. J. MORTON (Phone 13) . . . . . Agt., Passenger Sta.

SACRAMENTO 14, CAL. .... R. L. LAMB, Gen. Agt., G. N. Ry., 223 Forum Bldg.

ST. HELENS, ORE. .... J. L. MCGRAW (Phone 658) . . . . . Agt., S.P.&S. Station

SALEM, ORE. .... J. D. SURLES (Ph. 3-3129) . Agt., O.E.Ry. Frt. Depot

SAN FRANCISCO 5, CAL.  
Northern Pacific Railway 681 Market St. Phone Sutter 1-1078  
DANIEL TINNEY . . . . . General Agent  
Great Northern Railway 679 Market St. Phone Sutter 1-6051; 1-6052  
A. L. SCOTT . . . . . General Agent, Passenger Dept.  
P. J. MARTELL (Ph. 45) . . . . . Agent, S.P.&S. Ry. Sta.

SEASIDE, ORE. .... R. E. HENDERSHOTT . . . . . General Agent

SPOKANE 8, WASH. .... D. W. MORRISON, Traveling Frt. & Pass. Agt.  
925 Old National Bank Building, Ph. Main 4238  
RAY L. DUBOIS, General Agent, Passenger Dept.,  
Davenport Hotel, Phone Main 5141  
C. G. SHEFFIELD, City Passenger & Ticket Agt.,  
Sprague Ave. & Wall St. Phone Main 5321  
B. B. McCANNON, Ticket Agent, Gt. Nor. Ry. Sta.

VANCOUVER, WASH. .... J. CONDRA, Agt. (Ph. Oxford 3-1491), S.P.&S.R.Sta.  
C. M. WAGNER (Phone Oxford 5-2941) . . . . . Pass. Sta.

Agents of the Great Northern and Northern Pacific Rys. throughout the United States are the direct representatives of the Spokane, Portland and Seattle Railway Co., Oregon Trunk Railway and Oregon Electric Railway Co.

