

Spokane, Washington known as the Queen City of the Inland Empire is the Eastern Terminus of the S. P. & S. Railway. It is the second largest city in the State of Washington and is the center of a vast agricultural and industrial empire.



FEBRUARY 3, 1955
Subject to change without notice



The Northwest's Own Railway
THROUGH SERVICE
VIA

NORTH COAST
LIMITED

EMPIRE
BUILDER



TIME TABLES

Pacific Standard Time

TRAVEL THE
COLUMBIA RIVER
SCENIC ROUTE
THROUGH THE
CASCADE RANGE

FEBRUARY 3, 1955
Subject to change without notice



The Northwest's Own Railway
THROUGH SERVICE
VIA

NORTH COAST
LIMITED

EMPIRE
BUILDER



TIME TABLES

Pacific Standard Time

TRAVEL THE
COLUMBIA RIVER
SCENIC ROUTE
THROUGH THE
CASCADE RANGE



SPOKANE, PORTLAND AND SEATTLE RAILWAY SYSTEM

S. P. & S. RY.—OREGON TRUNK RY.—OREGON ELECTRIC RY.—(Subsidiaries of Northern Pacific and Great Northern Railways)

TRANSCONTINENTAL TRAIN SERVICE—BETWEEN PORTLAND, PASCO AND EAST

SPOKANE, PORTLAND AND SEATTLE, NORTHERN PACIFIC AND CHICAGO, BURLINGTON AND QUINCY RAILWAYS

Table with columns for West Bound, Read Down and Eastbound, Read Up. Includes routes like Chicago, Burlington and Quincy Railway, Northern Pacific Railway, and Spokane, Portland and Seattle Railway. Lists stations and times.

EQUIPMENT

VISTA-DOME NORTH COAST LIMITED BETWEEN CHICAGO AND PORTLAND All Lightweight Equipment S. P. & S. 1-2, N. P. 25-26, C. B. & Q. 25-26

OBSERVATION LOUNGE-BUFFET CAR—Between Pasco and Portland. (Car 10 westbound, Car 20 eastbound.)

OBSERVATION LOUNGE-SLEEPING CAR—Between Chicago and Pasco. Four bedrooms, 1 compartment, spacious lounge, radio, library, writing desk. Buffet service. (259 westbound, 269 eastbound.)

VISTA-DOME SLEEPING CAR—Between Chicago and Portland. Newest type all-room car. 4 Roomette, 4 Single and 4 Double Bedrooms. (258 westbound, 268 eastbound.)

STANDARD SLEEPING CAR—Between Chicago and Portland. Newest type all-room car. 3 bedrooms, 1 compartment, 6 roomettes, 8 duplex roomettes. (257 westbound, 267 eastbound.)

VISTA-DOME COACH—Between Chicago and Portland. Chaise lounge "sleepy hollow" seats with leg rests for reclining full length. (C253 westbound, C263 eastbound). Seats reserved in advance. No extra charge.

COACH-BUFFET-LOUNGE—Between Chicago and Pasco. De Luxe accommodations expressly for coach passengers. Writing desk, radio, magazines. Sandwiches and beverages.

DINING CAR SERVICE—Between Chicago and Portland. Club breakfasts, \$1.25 to \$1.95; Table d'hote dinner, \$2.90; Table d'hote luncheon, \$2.10. Special plate luncheons and dinners, \$1.80. Also a la carte service.

TICKETS—All classes of regular and reduced rate rail tickets will be honored for passage on the North Coast Limited.

THE MAINSTREETER

BETWEEN CHICAGO AND PORTLAND S. P. & S. 3-4, N. P. 1-2, C. B. & Q. 47-48

OBSERVATION LOUNGE-BUFFET CAR—Between Spokane and Portland. (Car 30 westbound, Car 40 eastbound.)

OBSERVATION LOUNGE-BUFFET CAR—Between St. Paul and Pasco. 8 Sections. (Car 106 westbound, car 206 eastbound.)

STANDARD SLEEPING CARS—Between Chicago and Pasco 8 Duplex Roomettes, 3 Double Bedrooms, 1 Compartment and 6 Roomettes. (105 westbound, 205 eastbound.)

Passengers will make station taxicab transfer at Spokane at no additional cost to modern standard cars from and to Chicago.

DINING CAR SERVICE—Between St. Paul and Pasco.

RECLINING SEAT COACHES—Between Chicago and Pasco. Between Spokane and Portland.

S. P. & S. No. 5 - 6, (Diesel Power), N. P. No. 5-6

COLUMBIA RIVER EXPRESS BETWEEN SPOKANE, PASCO AND PORTLAND

Deluxe reclining chair car, Pasco-Portland. Reserved seat coach, Cafe car and deluxe coaches, Spokane and Pasco.

SPOKANE, PORTLAND AND SEATTLE RAILWAY SYSTEM

S. P. & S. RY.—OREGON TRUNK RY.—OREGON ELECTRIC RY.—(Subsidiaries of Northern Pacific and Great Northern Railways)

TRANSCONTINENTAL TRAIN SERVICE—BETWEEN PORTLAND, SPOKANE AND EAST

VIA CHICAGO, BURLINGTON & QUINCY AND GREAT NORTHERN, SPOKANE, PORTLAND AND SEATTLE RAILWAYS

Table with columns for Westbound, Read Down and Eastbound, Read Up. Includes routes like Chicago, Burlington and Quincy Railway, Great Northern Ry., and Spokane, Portland and Seattle Railway. Lists stations and times.

THE STREAMLINED WESTERN STAR (Lightweight Streamlined Equipment)

CHICAGO-PORTLAND NO EXTRA FARE CB&Q 47-48, GN 3-4, SP&S 3-4

ALL CLASSES OF TICKETS HONORED

Observation-Lounge-Buffet Car between Spokane and Portland—contains 8 Sections (Car 30 Westbound, Car 40 Eastbound).

Observation-Lounge Car between Chicago and Spokane—Buffet service and radio reception. Also contains 1 Drawing Room and 2 Double Bedrooms (39 Westbound, 49 Eastbound).

Standard Sleeping Cars offering modern Pullman accommodations between Chicago and Portland, one car containing 4 Sections, 8 Duplex Roomettes and 4 Double Bedrooms. Double Bedrooms are connecting and may be sold ensuite at drawing room rate (32 Westbound, 42 Eastbound).

Streamliner Day-Nite Coaches between Chicago and Spokane. Reclining seats with leg rests forming a couch for sleeping. Wide windows and individual reading lights, modern lounge and dressing rooms. Radio reception. Deluxe coaches between Spokane and Portland. (Seats reserved June 14 to Sept. 9 only.)

Buffet Service between Spokane and Portland.

Coffee Shop Car between St. Paul and Spokane. Selling beer, liquor, fruit, candy bars and magazines throughout the day.

Dining Car Service between St. Paul and Spokane. Traditional famous Great Northern meals. Club breakfasts, plate luncheons, table d'hote luncheons, plate dinners, table d'hote dinners. Also a la carte service for all meals.

† Except Sunday. * Passengers may remain in sleeping cars at Portland until 7:30 A.M. c—No. 1 stops at Glasgow to discharge revenue passengers from Minot and East and to receive revenue passengers for Spokane and West where No. 1 is scheduled to stop. d—No. 2 stops at Glasgow to discharge revenue passengers from Spokane and West and to receive revenue passengers for Minot and East where No. 2 is scheduled to stop. e—No. 1 stops at Cut Bank to discharge revenue passengers from Williston and east and to receive revenue passengers for scheduled stops Spokane and West. f—No. 2 stops at Cut Bank to discharge revenue passengers from Spokane and West and to receive revenue passengers for scheduled stops Williston and East. g—No. 3 stops at Glacier Park and Belton to receive revenue passengers for Spokane and West where No. 3 is scheduled to stop and to discharge revenue passengers from Great Falls and East. h—No. 4 stops at Belton and Glacier Park to discharge revenue passengers from Spokane and West and to receive revenue passengers for Great Falls and East where No. 4 is scheduled to stop. i—Bus service, rail tickets honored.



EQUIPMENT

THE STREAMLINED EMPIRE BUILDER (Lightweight Streamlined Equipment Only)

CHICAGO-PORTLAND NO EXTRA FARE CB&Q 49-44, GN 1-2, SP&S 1-2

Standard Sleeper-Club-Lounge car with 6 Roomettes, 3 Double Bedrooms, 25 lounge seats between Spokane and Portland. (Car 10 Westbound, Car 20 Eastbound.)

Observation-Lounge car between Chicago and Spokane. Buffet service and radio reception.

Standard Sleepers offering seven latest types of Pullman accommodations. Drawing Rooms, Compartments, Double Bedrooms, Roomettes, Duplex Roomettes, Lower and Upper Berths. Between Chicago and Portland, two sleepers (11-12 Westbound, 21-22 Eastbound). Advance reservations of Pullman accommodations may be made at any time prior to scheduled departure except as follows: Pullman space on the "Empire Builder" for intermediate travel between any two stations west of Havre or between any two stations east of Havre may not be reserved until 24 hours prior to train departure time eastbound from Portland or westbound from Chicago.

Streamlined Day-Nite Coaches. Reclining seats with leg rests forming a couch for sleeping. Individual reading lights. Commodious lounge and dressing rooms—two lounges for women with curtain dressing alcoves. Radio reception. Between Chicago and Portland one 48-seat coach (03 Westbound, 203 Eastbound). Advance coach seat reservations should be made so that definite coach seat assignment may be obtained before departure. All seats reserved in advance (including seats for children under 5 years of age) at no extra charge.

DeLuxe Coach between Spokane and Portland, 56 reclining seats. (Seats not reserved.)

Buffet service between Spokane and Portland.

The Ranch Coffee Shop-Lounge Car—Between Chicago and Spokane. Lounge facilities for all passengers including coach passengers. Radio reception. Coffee shop with counter and table service at economical meal prices. Club breakfasts: fruits and fruit juices, cereals, eggs, toast, rolls, doughnuts and beverages. Plate luncheons and dinners. Soups, sandwiches, salads, desserts and beverages available throughout the day.

Dining car with the most modern furnishings, decor and semi-private dining sections between Chicago and Portland. Radio reception. Traditional famous Great Northern meals. Club breakfasts, plate luncheons, table d'hote luncheons, plate dinners, table d'hote dinners. Also a la carte service for all meals.

To avoid standing in line for dinner, passengers have the choice of one hour dining periods beginning at 5 P.M. Passenger Representatives on the train arrange dinner reservations.

Tickets. Tickets endorsed Clergy, Charity, Employee, D.V.S., V.A.H., Blind and Attendant, Blind and Guide Dog, Circus, Show, Banana Messenger, Drover's or Caretaker's tickets and Livestock Contracts will not be honored.

Baggage. Limited amount of checked baggage will be handled.



Spokane, Portland and Seattle Railway System

S. P. & S. Ry. - Oregon Trunk Ry. - Oregon Electric Ry. - (Subsidiaries of Northern Pacific and Great Northern Railways)

Portland - Wishram - Pasco - Spokane Trains

Table of train schedules for Portland - Wishram - Pasco - Spokane Trains, including Westbound and Eastbound services, station names, and arrival/departure times.

FOR THROUGH SERVICE AND CONSIST OF ALL TRAINS, SEE PRECEDING PAGES 2 and 3.

A TRANS-CONTINENTAL SYSTEM OF RAILWAYS THROUGH AMERICA'S WONDERLAND

Traversing the northern states between the Pacific Northwest and Chicago presents a veritable wonderland offering passengers a splendid variety of ever-changing scenery.

Over these lines, between Portland and Chicago, are operated four of America's famous trains, the Streamlined Empire Builder and the Streamlined Western Star, via S.P.&S. Spokane, G.N. St. Paul, C.B. & Q. Chicago, and the Streamlined North Coast Limited and The Mainstreeter via S.P. & S. Pasco, N.P. St. Paul and C.B. & Q. Chicago where connections are made to all points east and south.

These trains provide passengers with every feature of modern railway travel for their comfort, and pleasure.

Light face figures denote A.M. time. Bold face figures denote P.M. time. Ar. Arrive. Lv. Leave. /Stop on Signal.



Spokane, Portland and Seattle Railway System

S. P. & S. Ry. - Oregon Trunk Ry. - Oregon Electric Ry. - (Subsidiaries of Northern Pacific and Great Northern Railways)

Portland - Redmond - Bend Trains

Table of train schedules for Portland - Redmond - Bend Trains, including Read Down and Read Up services, station names, and arrival/departure times.

EQUIPMENT BETWEEN PORTLAND AND BEND

Trains Nos. 4-102 and 103-3. Coaches daily between Portland and Wishram and Daily except Sunday between Wishram and Bend. Observation Lounge Buffet cars daily between Portland and Wishram. See pages 2, 3 and 4.

RAIL TRAVEL CREDIT CARD PLAN

permits purchase of Rail and Pullman tickets from any S. P. & S. Ry. Co. agent on Credit by securing a Credit Card from the Rail Travel Credit Agency, Room 436 Union Station, Chicago, Ill.

"DRIVURSELF" RAIL-AUTO SERVICE

provides a new automobile at your destination or stop over point. Ask the agent for further details on any of the above plans.

Western Union advertisement featuring a rooster logo and the text 'Wherever you're headed always Telegraph'.

Light face figures denote A.M. time. Bold face figures denote P.M. time. Ar. Arrive. Lv. Leave. /Stop on Signal. t Telegraph Office.

Portland - St. Helens

Rainier - Astoria - Clatsop Beach Passenger Service

Table of train schedules for Portland - St. Helens, Rainier - Astoria - Clatsop Beach Passenger Service, including Read Down and Read Up services, station names, and arrival/departure times.

S. P. & S. Ry. Local tickets will not be issued or honored on Pacific Greyhound Lines between above stations. Interline tickets routed S. P. & S. Ry. between above stations and stations east of Portland or via S. P. & S. Ry. will be honored on Pacific Greyhound Lines.

PACIFIC TRAILWAYS

Table of train schedules for Pacific Trailways, including Read Down and Read Up services, station names, and arrival/departure times.

Freight Service Only: Route your freight shipments via the Spokane, Portland and Seattle Railway for fast and dependable service-between Portland, Astoria, Pasco, Spokane, Yakima, Walla Walla, Pendleton, Lewiston, Bend and all points east and south.

Let Us Handle Your Transportation Problems

Freight Service Only

Table of freight service routes for Portland - St. Helens - Astoria Line, including station names and distances.

Passenger Service

Operated by PACIFIC GREYHOUND LINES. SEE SCHEDULES ABOVE

Freight Service Only

is operated on the following Branches

S. P. & S. Railway

Table of stations for Goldendale Branch, including station names and distances.

Table of stations for Keasey Branch, including station names and distances.

Table of stations for Hammond Branch, including station names and distances.

Oregon Electric Railway

Table of stations for Portland-Salem-Albany-Eugene Line, including station names and distances.

Forest Grove Branch

Table of stations for Forest Grove Branch, including station names and distances.

Santiam Branch

Table of stations for Santiam Branch, including station names and distances.



SPokane, Portland and Seattle Railway System

S. P. & S. Ry. - Oregon Trunk Ry. - Oregon Electric Ry. - (Subsidiaries of Northern Pacific and Great Northern Railways)

Portland - Puget Sound - British Columbia

Northern Pacific Ry. - Great Northern Ry. - Union Pacific R. R.

Table with columns for Northbound-Read Down and Southbound-Read Up, listing stations like Portland, Un. Sta., Vancouver, Wn., Kalama, Kelso-Longview, Castle Rock, Chehalis, Centralia, East Olympia, Tacoma, Seattle, Everett, Bellingham, and Vancouver, B.C. with associated times.

†Daily except Sunday b To and from Olympia by bus k King Street Station p Stops from Portland and beyond u Union Station

Connections at Spokane and Pasco

Table showing bus connections between Spokane and Pasco, listing bus numbers and times for various routes.

Southern Pacific Company

Table with columns for Southbound-Read Down and Northbound-Read Up, listing stations like Portland, Salem, Albany, Corvallis, Eugene, Klamath Falls, Redding, Sacramento, Martinez, Oakland, San Francisco, and Los Angeles with times.

a-via P G Lines Bus from and to Albany.

Equipment of Trains

Trains 9-10, Shasta Daylight—Streamlined Air Conditioned Train-Radio Parlor Obs. Reclining Chair Cars, Diner, Coffee Shop and Tavern Car. Reserved seat Chair Car. Train 58 will take transfers from No. 9 at Martinez. Train 57 will make transfer to No. 10 at Oakland, 16th Street. Train 11-12, Cascade—(Streamlined, Air Conditioned). Between Portland and San Francisco. Standard sleeping cars with drawing rooms, compartments, bedrooms, roomettes, lounge and dining car. Reserved seat chair car. (Telephone service on Trains 11-12.) Train 19-20, Klamath—(Air Conditioned). Between Portland and San Francisco. Standard sleeping cars, diner, coaches and reclining chair cars. Train 329-330, Rogue River—Between Portland and Ashland. Standard Air Conditioned sleeping car, sections, compartments and drawing room and chair car.

Spokane, Portland and Seattle Railway System

S. P. & S. Ry. - Oregon Trunk Ry. - Oregon Electric Ry. - (Subsidiaries of Northern Pacific and Great Northern Railways)



Sleeping, Parlor Car and Reserved Seat Fares

Federal Tax Extra

For information only. Subject to change without notice.

Table showing fares between various cities including Billings, Boston, Bozeman, Buffalo, Butte, Camas, Chicago, Cincinnati, Cleveland, Denver, Detroit, Duluth, Eugene, Fargo, Gardiner, Glacier Park, Grants Pass, Great Falls, Havre, Helena, Kansas City, Klamath Falls, Livingston, Los Angeles, Louisville, and Lyle. Columns include Parlor Car Seat, Lower Berth, and Standard Berth.

Ⓛ Railroad Owned Cars.

Rates for Sleeping Car Accommodations

Table showing rates for different accommodations: Roomette, Bedroom, Bedroom Suite, Compartment, and Drawing Room. Columns include Upper Berth, Duplex-Roomette, and rates for one or two persons.

Industrial Locations

National concerns continue to come to the Pacific Northwest and are choosing the Portland area as a location for their distribution warehouses. This is not only because of the tremendous growth in population but because of the strategic location for distribution throughout the Pacific Northwest, Alaska, the Hawaiian Islands, and the Orient. In addition, industries requiring lower power costs, better labor, or climatic working conditions, continue to locate throughout the area.

The SP&S RAILWAY SYSTEM owns and serves a great many industrial locations along the Columbia and Willamette Rivers as well as in the cities of both Oregon and Washington. Contact the Industrial Department for information.

R. W. WEST
General Industrial Agent
American Bank Building
P. O. Box 571
Portland 7, Oregon

Through sleeping cars not operated in all trains; fare applies for continuous trip via direct connections. A duplex roomette is a single private room with wash basin and toilet; a bedroom contains lower and upper berth, wardrobe and complete toilet facilities; a compartment is a private room with lower and upper berths, wash basin and toilet; a drawing room has a divan berth in addition.

Exclusive occupancy of a drawing room, two bedrooms en suite or a bedroom and compartment en suite requires 1 1/4 adult rail tickets, or their equivalent; for compartment, duplex-roomette, single or double bedroom, one adult ticket between S. P. & S. - N. P. - G. N. and connections; 1-1/10 tickets between certain other lines; for section, one adult ticket for each berth.

Table showing distances and fares between various locations including Bend, Klamath Falls, Bieber, Pasco, Walla Walla, Portland, and Seattle. Columns include miles and fares for different services.

Table showing routes and fares for San Francisco - Los Angeles - Coast Line and San Francisco - Los Angeles - Valley Line. Columns include stations and fares.

Table showing routes and fares for Union Pacific Railroad, including stations like Portland, Hood River, The Dalles, Pendleton, Baker, Payette, Ontario, Nampa, Boise, Pocatello, Ogden, Salt Lake, Cheyenne, and Denver.

MARK YOUR BAGGAGE

All baggage, whether checked or carried with you, should be plainly marked with your name and permanent address. This will insure prompt recovery should it become lost or go astray. Remove all obsolete labels and addresses. JEWELRY, CURRENCY, VALUABLE PAPERS and LIQUIDS should not be placed in baggage intended for checking. The railway will not assume responsibility for loss of, or damage to such articles.

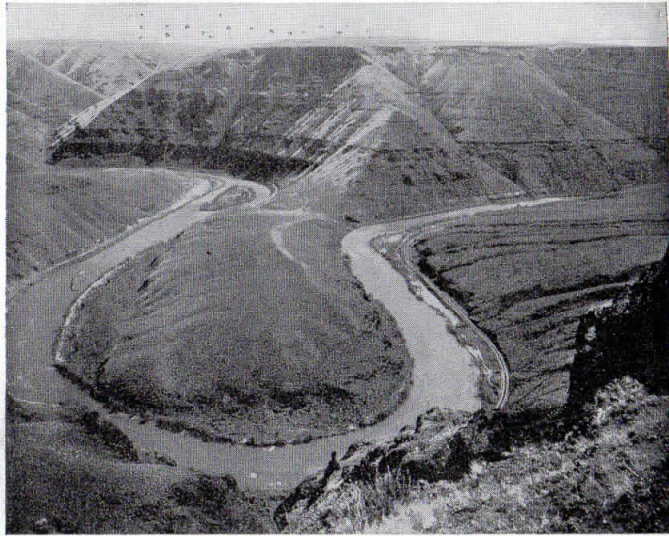
Table showing fares for Northern Pacific routes, including stations like Portland, Spokane, Spangle, Rosalia, Oakesdale, Garfield, Palouse, Pullman, Moscow, Kendrick, Juliaetta, and Lewiston.

Light face figures denote A.M. time. Bold face figures denote P.M. time. Ar. Arrive. Lv. Leave. f/Stop on Signal.



SPOKANE, PORTLAND AND SEATTLE RAILWAY SYSTEM

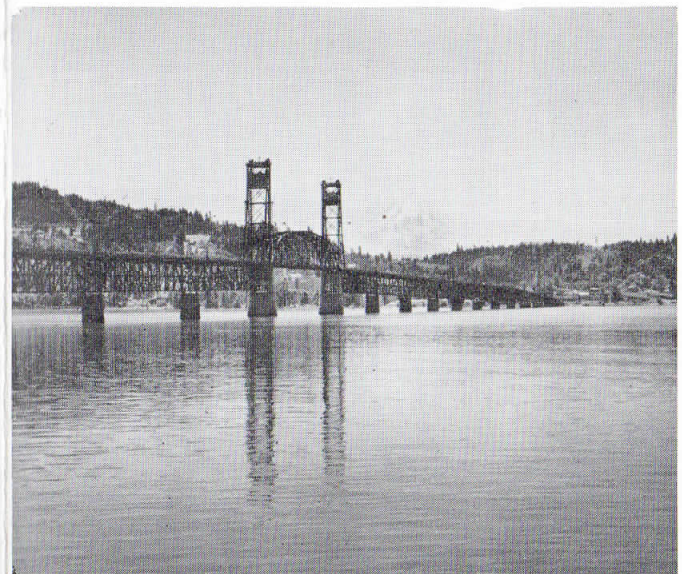
S. P. & S. RY. — OREGON TRUNK RY. — OREGON ELECTRIC RY. — (Subsidiaries of Northern Pacific and Great Northern Railways)



Horseshoe curve near Sinamox on the Oregon Trunk Railway



Astor Column, Astoria, Oregon



Toll Bridge over the Columbia River near Bingen-White Salmon on the S. P. & S. Ry. with Mt. Hood in the background.

Your Choice of... Three Daily Trains

Between PORTLAND and SPOKANE

See Page 4 For Detailed Schedules

FAST DELIVERY

For prompt pickup and fast delivery (within established vehicle limits everywhere) specify Railway Express

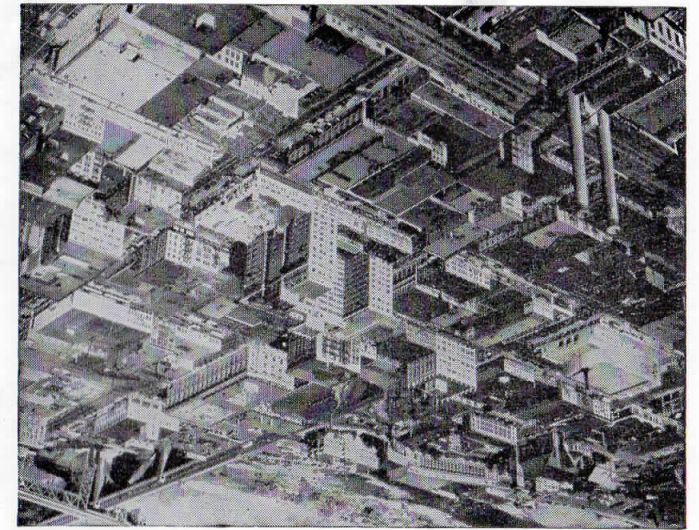


SPOKANE, PORTLAND AND SEATTLE RAILWAY SYSTEM

S. P. & S. RY. — OREGON TRUNK RY. — OREGON ELECTRIC RY. — (Subsidiaries of Northern Pacific and Great Northern Railways)



Airplane view of Vancouver, Washington and S. P. & S. bridge across Columbia River

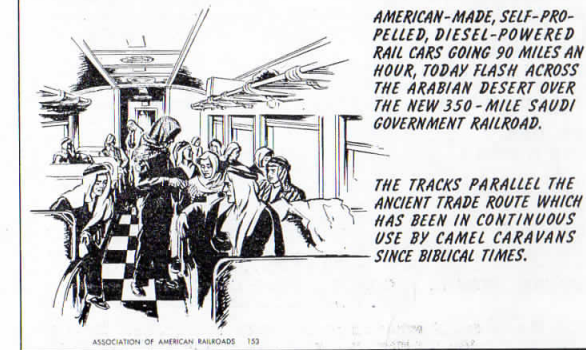


Spokane — Queen City of the Inland Empire

Rail oddities



ALADDIN — WITH A SPECIAL RUB OF HIS MAGIC LAMP — COULD HARDLY HAVE CONJURED UP ANYTHING LIKE THIS.



AMERICAN-MADE, SELF-PROPELLED, DIESEL-POWERED RAIL CARS GOING 90 MILES AN HOUR, TODAY FLASH ACROSS THE ARABIAN DESERT OVER THE NEW 350-MILE SAUDI GOVERNMENT RAILROAD.

THE TRACKS PARALLEL THE ANCIENT TRADE ROUTE WHICH HAS BEEN IN CONTINUOUS USE BY CAMEL CARAVANS SINCE BIBLICAL TIMES.

ASSOCIATION OF AMERICAN RAILROADS 153



Vital Link Between
SPOKANE, PORTLAND & CALIFORNIA
Portland, Pasco, Spokane and East



Portland — the Rose City



SPOKANE, PORTLAND AND SEATTLE RAILWAY SYSTEM

S. P. & S. RY. - OREGON TRUNK RY. - OREGON ELECTRIC RY. - (Subsidiaries of Northern Pacific and Great Northern Railways)

GENERAL INFORMATION

NOTE—This folder has been compiled with care, but may contain errors. Furthermore, it is sometimes necessary to change schedules without notice, trains shown are sometimes unavoidably delayed and connections missed. We hope none of our patrons will be inconvenienced by any of these causes, but the Railway Company will not be liable therefor.

ADJUSTMENT OF FARES. In cases of dispute with conductors or agents, passengers should pay fare required, take receipt and communicate with Auditor Revenue Accounts, S. P. & S. Ry., Box 571, Portland 7, Ore.

REDEMPTION OF TICKETS. Wholly unused tickets will be redeemed by selling agent. Partly used tickets will be redeemed under tariff regulations on application to Auditor Revenue Accounts.

TICKET LIMITS. Tickets will be honored for continuous passage to destination when presented not later than 4:00 a.m. standard time of the day following date of expiration as punched or otherwise shown on ticket. One-way tickets will be honored for passage within 30 days, round-trip tickets 6 months, in addition to date of sale.

FEDERAL TAX. Fares quoted in this folder do not include 10% Federal tax.

STOPOVERS will be allowed at all regular scheduled stops within limits, on application to Conductor.

CHILDREN'S FARES. Children under five years of age, when accompanied by parent or guardian, will be carried free of charge. Children five years of age and under twelve years of age will be charged one-half of the adult fares. Children of five and under twelve years of age who are not mature enough to take care of themselves when traveling alone must not be ticketed unless accompanied by parent or guardian. Children twelve years of age and over will be charged the adult fare.

MARK YOUR BAGGAGE. All baggage should show name and permanent address of owner. Appropriate gummed labels may be secured from Ticket or Baggage Agent.

HAND BAGGAGE in Pullmans is restricted to what can be conveniently placed in berth or at seat occupied by passenger.

BAGGAGE MAXIMUMS. Ordinarily 150 lbs. is free allowance for each adult ticket. No single piece of baggage exceeding 300 pounds in weight, or 72 inches in greatest dimension, or exceeding \$2500.00 in value will be checked. Free allowances are subject to tariff stipulation as to contents, weight, value and size.

BAGGAGE INSURANCE. A charge of only twenty cents is made for each hundred dollars value declared above \$100 for baggage checked for each adult passenger and above \$50 for each half-fare ticket. The maximum baggage valuation which may be insured on a single ticket is \$2500.

LIMITED LIABILITY. Excess value of baggage must be declared and paid for at time of checking.

BICYCLES (not motorcycles), baby carriages, dogs and guns are carried in baggage cars subject to tariff regulations.

LOST ARTICLES should be inquired for at the Baggage Office, Union Station, Portland, Oregon, or S. P. & S. Station, Spokane, Wash.

RESPONSIBILITY. No responsibility is assumed for unchecked articles left in stations or cars.

GENERAL OFFICES

Amer. Bank Bldg., 621 S.W. Morrison St., Box 571, Portland 7, Oregon

R. S. MACFARLANE... President... St. Paul 1, Minn.
 JOHN M. BUDD... Vice-President... St. Paul 1, Minn.
 J. C. MOORE... Vice-President... Portland, Oregon
 A. J. HUNT... Asst. to Vice-Pres. & Gen. Mgr... Portland, Oregon
 GEO. F. EHLEN... Traffic Manager... Portland, Oregon
 H. W. SHIELDS... Asst. Traffic Manager... Portland, Oregon
 W. J. CHROBIE... General Passenger Agent... Portland, Oregon
 E. H. BLOCK... General Freight Agent... Portland, Oregon
 R. W. WEST... Gen. Industrial Agent... Portland, Oregon
 F. J. HARRIS... Asst. General Industrial Agent... Portland, Oregon
 E. J. SHOWALTER... General Manager... Portland, Oregon
 N. S. WESTERGARD... Asst. to Gen. Mgr... Portland, Oregon
 J. L. MONAHAN... Superintendent... Portland, Oregon
 C. E. BARNES... Gen'l Supt. Motive Power... Vancouver, Wash.
 C. F. THOMAS... Secretary and Chief Engineer... Portland, Oregon
 T. L. PADDEN... Treasurer... Portland, Oregon
 G. R. WILLIAMS... Purchasing Agent... Portland, Oregon
 L. W. ALBERTSON... Comptroller... Portland, Oregon
 H. L. KENDALL... Auditor Disbursements... Portland, Oregon
 E. C. MICHELSEN... Auditor Revenue Accounts... Portland, Oregon
 C. E. BROEDER... Auditor Miscl. Accounts... Portland, Oregon
 G. C. GRAHAM... Auditor Machine Section... Portland, Oregon
 W. J. SHEEHAN... Gen'l Claim Agent... Portland, Oregon
 W. P. GARRETT... Right of Way and Tax Agent... Portland, Oregon
 W. T. COWAN... Superintendent Dining Cars... Portland, Oregon

Representatives

ALBANY, ORE. T. S. BRACE (Phone M. 291)... Agt., O. E. Ry. Sta.
 ASTORIA, ORE. R. C. BAKER, 20th & Commercial (Phone 113). Agt.
 BEND, ORE. E. A. KOSKELA (Phone 1360) Agt. Passenger Sta.
 G. A. SILKWORTH (Phone 438)... General Agent
 EUGENE, ORE. W. C. BODNO (Ph. 5-8757, 5-8758)... Agt., O.E.Ry. Sta.
 W. Z. MYERS (Phone 5-8750, 5-8759)... General Agt.
 J. H. TAYLOR... Traveling Frt. & Pass. Agent
 HILLSBORO, ORE. H. SWENSON (Ph. 1944)... Agt., O.E.Ry. Frt. Depot
 JUNCTION CITY, ORE. L. W. MALLORY (Ph. M. 382). Agt., O.E.Ry. Frt. Depot
 LOS ANGELES 14, CALIF.
 Great Northern Railway Room 317 510 West Sixth St., Ph. Madison 9-1473
 S. L. WILLIAMS... District Passenger Agent
 Northern Pacific Railway 510 West Sixth St., Phone Trinity 2321
 D. F. WALKER... General Agent
 OAKLAND 12, CAL.
 Great Northern Railway 807 Financial Center, Ph. Templebar 2-7672
 C. G. ALEXANDER... District Passenger Agent
 Northern Pacific Railway 815 Central Bank Bldg., Ph. Glencourt 1-8717
 SPENCER A. JEWELL... General Agent
 PORTLAND 7, ORE. A. C. STICKLEY... GAPD (SP&S-NP. Rys.)
 439 S.W. 6th Ave., Telephone Capitol 1311
 A. W. GUSEY... GAPD (SP&S-GN. Rys.)
 607 S.W. Washington St., Telephone BE. 7273
 J. L. MILLER, Ticket Agt., Union Station, Foot of N.W. 6th Ave., Telephone Broadway 3421
 H. K. HALLGREN... District Passenger Agent
 R. A. LAWRENCE... General Agent, Freight Dept.
 CLARENCE JOHNSON... Trav. Frt. & Pass. Agent
 ALEX H. STUCKERT... City Freight Agent
 J. W. JONES... City Freight Agent
 G. E. SKINNER... City Freight Agent
 P. H. BRINGMANN, Local Freight Agent, N. W. 11th and Hoyt, Phone ATwater 9111
 REDMOND, ORE. A. F. SHUGERT (Phone 13)... Agt., Passenger Sta.
 SACRAMENTO 14, CAL. R. L. LAMB, Gen. Agt., G. N. Ry., 223 Forum Bldg.
 ST. HELENS, ORE. J. L. MCGRAW (Phone 658)... Agt., S.P.&S. Station
 SALEM, ORE. J. D. SURLLES (Ph. 3-3129). Agt., O.E.Ry. Frt. Depot
 SAN FRANCISCO 5, CAL.
 Northern Pacific Railway 681 Market St. Phone Sutter 1-1078
 DANIEL TINNEY... General Agent
 Great Northern Railway 679 Market St. Phone Sutter 1-6051; 1-6052
 A. L. SCOTT... General Agent, Passenger Dept.
 P. J. MARTELL (Ph. 45)... Agent, S.P.&S. Ry. Sta.
 SEASIDE, ORE. R. E. HENDERSHOTT... General Agent
 D. W. MORRISON, Traveling Frt. & Pass. Agt.
 925 Old National Bank Building, Ph. Main 4238
 RAY L. DUBOIS, General Agent, Passenger Dept.,
 Davenport Hotel, Phone Main 5141
 C. G. SHEFFIELD, City Passenger & Ticket Agt.,
 Sprague Ave. & Wall St. Phone Main 5321
 B. B. McCANNON, Ticket Agent, Gt. Nor. Ry. Sta.
 VANCOUVER, WASH. J. CONDRA, Agt. (Ph. Oxford 3-1491), S.P.&S.R. Sta.
 C. M. WAGNER (Phone Oxford 5-2941)... Pass. Sta.

Agents of the Great Northern and Northern Pacific Rys. throughout the United States are the direct representatives of the Spokane, Portland and Seattle Railway Co., Oregon Trunk Railway and Oregon Electric Railway Co.

