



Spokane, Washington known as the Queen City of the Inland Empire is the Eastern Terminus of the S. P. & S. Railway. It is the second largest city in the State of Washington and is the center of a vast agricultural and industrial empire.



OCTOBER 18, 1953
Subject to change without notice



The Northwest's Own Railway
THROUGH SERVICE

VIA

NORTH COAST
LIMITED

EMPIRE
BUILDER



TIME TABLES

Pacific Standard Time

TRAVEL THE
**COLUMBIA RIVER
SCENIC ROUTE
THROUGH THE
CASCADE RANGE**

OCTOBER 18, 1953
Subject to change without notice



The Northwest's Own Railway
THROUGH SERVICE

VIA

NORTH COAST
LIMITED

EMPIRE
BUILDER



TIME TABLES

Pacific Standard Time

TRAVEL THE
**COLUMBIA RIVER
SCENIC ROUTE
THROUGH THE
CASCADE RANGE**



SPOKANE, PORTLAND AND SEATTLE RAILWAY SYSTEM

S. P. & S. RY.—OREGON TRUNK RY.—OREGON ELECTRIC RY.—(Subsidiaries of Northern Pacific and Great Northern Railways)

TRANSCONTINENTAL TRAIN SERVICE—BETWEEN PORTLAND, PASCO AND EAST

SPOKANE, PORTLAND AND SEATTLE, NORTHERN PACIFIC AND CHICAGO, BURLINGTON AND QUINCY RAILWAYS

Table with columns for West Bound, Read Down and Eastbound, Read Up. Includes train numbers, routes, and times.

Table titled 'C.B. & Q. Connections at Billings for Denver & Mo. River Points' showing arrival and departure times.

a—Stops to let off or pick up revenue passengers from or to Missoula and east or Pasco and west where scheduled to stop. x Bus, Winter Season. * Passengers may remain in sleeping cars at Portland until 7:30 A.M. (Arrive) (Leave)

EQUIPMENT

STREAMLINED NORTH COAST LIMITED BETWEEN CHICAGO AND PORTLAND All Lightweight Equipment S. P. & S. 1-2, N. P. 25-26, C. B. & Q. 25-26

OBSERVATION LOUNGE-BUFFET CAR—Between Pasco and Portland. (Car 10 westbound, Car 20 eastbound.)

OBSERVATION LOUNGE-SLEEPING CAR—Between Chicago and Pasco. Four bedrooms, 1 compartment, spacious lounge, radio, library, writing desk. Buffet service. (258 westbound, 268 eastbound.)

STANDARD SLEEPING CAR—Between Chicago and Portland. Newest type all-room car. 3 bedrooms, 1 compartment, 6 roomettes, 8 duplex roomettes. (257 westbound, 267 eastbound.)

LUXURY "DAY-NITE" COACH—Between Chicago and Portland. Chaise lounge "sleepy hollow" seats with leg rests for reclining full length. (C253 westbound, C263 eastbound.) Seats reserved in advance. No extra charge.

COACH-BUFFET-LOUNGE—Between Chicago and Pasco. De Luxe accommodations expressly for coach passengers. Writing desk, radio, magazines. Sandwiches and beverages.

DINING CAR SERVICE—Between Chicago and Portland. Club breakfasts, \$1.15 to \$1.75; Table d'hote dinner, \$2.50; Table d'hote luncheon, \$1.90. Special plate luncheons and dinners, \$1.50. Also a la carte service. At Lunch Counter between Chicago and Pasco: Tasty hot plates, 75c to \$1.05. Soups, sandwiches, salads, desserts, beverages. Breakfast—Fruits and juices, cereals, eggs, toast, rolls, doughnuts, beverages. Combination breakfasts, 75c to \$1.00.

TICKETS—All classes of regular and reduced rate rail tickets will be honored for passage on the North Coast Limited.

THE MAINSTREETER BETWEEN CHICAGO AND PORTLAND S. P. & S. 3-4, N. P. 1-2, C. B. & Q. 47-48

OBSERVATION LOUNGE-BUFFET CAR—Between Spokane and Portland. (Car 30 westbound, Car 40 eastbound.)

OBSERVATION LOUNGE-BUFFET CAR—Between Chicago and Pasco. 8 Sections. (Car 106 westbound, car 206 eastbound.)

STANDARD SLEEPING CARS—Between Chicago and Pasco 6 Sections, 6 Double bedrooms. (105 westbound, 205 eastbound.)

Passengers will make station taxicab transfer at Spokane at no additional cost to modern standard cars from and to Chicago.

DINING CAR SERVICE—Between St. Paul and Pasco.

RECLINING SEAT COACHES—Between Chicago and Pasco. Between Spokane and Portland.

S. P. & S. No. 5-6, (Diesel Power), N. P. No. 5-6 COLUMBIA RIVER EXPRESS BETWEEN SPOKANE, PASCO AND PORTLAND

Deluxe reclining chair car, Pasco-Portland. Reserved seat coach, Cafe car and deluxe coaches, Spokane and Pasco.

Seats in reserved seat coach, Spokane-Pasco, must be reserved in advance.

Light face figures denote A.M. time. Bold face figures denote P.M. time. Ar. Arrive. Lv. Leave. /Stop on Signal.

SPOKANE, PORTLAND AND SEATTLE RAILWAY SYSTEM

S. P. & S. RY.—OREGON TRUNK RY.—OREGON ELECTRIC RY.—(Subsidiaries of Northern Pacific and Great Northern Railways)

TRANSCONTINENTAL TRAIN SERVICE—BETWEEN PORTLAND, SPOKANE AND EAST

VIA CHICAGO, BURLINGTON & QUINCY AND GREAT NORTHERN, SPOKANE, PORTLAND AND SEATTLE RAILWAYS

Table with columns for Westbound, Read Down and Eastbound, Read Up. Includes train numbers, routes, and times.

EQUIPMENT

THE STREAMLINED EMPIRE BUILDER (Lightweight Streamlined Equipment Only) CHICAGO-PORTLAND NO EXTRA FARE CB&Q 49-44, GN 1-2, SP&S 1-2

Standard Sleeper-Club-Lounge car with 6 Roomettes, 3 Double Bedrooms, 25 lounge seats between Spokane and Portland. (Car 10 Westbound, Car 20 Eastbound.)

Observation-Lounge car between Chicago and Spokane. Buffet service and radio reception.

Standard Sleepers offering seven latest types of Pullman accommodations. Drawing Rooms, Compartments, Double Bedrooms, Roomettes, Duplex-Roomettes, Lower and Upper Berths. Between Chicago and Portland, two sleepers (11-12 Westbound, 21-22 Eastbound). Advance reservations of Pullman accommodations may be made at any time prior to scheduled departure except as follows: Pullman space on the "Empire Builder" for intermediate travel between any two stations west of Havre or between any two stations east of Havre may not be reserved until 24 hours prior to train departure time eastbound from Portland or westbound from Chicago.

Streamlined Day-Nite Coaches. Reclining seats with leg rests forming a couch for sleeping. Individual reading lights. Commodious lounge and dressing rooms—two lounges for women with curtain dressing alcoves. Radio reception. Between Chicago and Portland one 48-seat coach (103 Westbound, 203 Eastbound). Advance coach seat reservations should be made so that definite coach seat assignment may be obtained before departure. All seats reserved in advance (including seats for children under 5 years of age) at no extra charge.

DeLuxe Coach between Spokane and Portland, 60 reclining seats. (Seats not reserved.)

Buffet service between Spokane and Portland.

The Ranch Coffee Shop-Lounge Car—Between Chicago and Spokane. Lounge facilities for all passengers including coach passengers. Radio reception. Coffee shop with counter and table service at economical meal prices. Club breakfasts: fruits and fruit juices, cereals, eggs, toast, rolls, doughnuts and beverages. Plate luncheons and dinners. Soups, sandwiches, salads, desserts and beverages available throughout the day.

Dining car with the most modern furnishings, decor and semi-private dining sections between Chicago and Portland. Radio reception. Traditional famous Great Northern meals. Club breakfasts, plate luncheons, table d'hote luncheons, plate dinners, table d'hote dinners. Also a la carte service for all meals.

To avoid standing in line for dinner, passengers have the choice of one hour dining periods beginning at 5 P.M. Passenger Representatives on the train arrange dinner reservations.

Tickets. Tickets endorsed Clergy, Charity, Employee, D.V.S., V.A.H., Blind and Attendant, Blind and Guide Dog, Circus, Show, Banana Messenger, Drover's or Caretaker's tickets and Livestock Contracts will not be honored.

Baggage. Limited amount of checked baggage will be handled.

THE STREAMLINED WESTERN STAR (Lightweight Streamlined Equipment) CHICAGO-PORTLAND NO EXTRA FARE CB&Q 53-54, GN 3-4, SP&S 3-4 ALL CLASSES OF TICKETS HONORED

Observation-Lounge-Buffet Car between Spokane and Portland—contains 8 Sections (Car 30 Westbound, Car 40 Eastbound).

Observation-Lounge Car between Chicago and Spokane—Buffet service and radio reception. Also contains 1 Drawing Room and 2 Double Bedrooms (39 Westbound, 49 Eastbound).

Standard Sleeping Cars offering modern Pullman accommodations between Chicago and Portland, one car containing 4 Sections, 8 Duplex Roomettes and 4 Double Bedrooms. Double Bedrooms are connecting and may be sold en suite at drawing room rate (32 Westbound, 42 Eastbound).

Streamliner Day-Nite Coaches between Chicago and Spokane. Reclining seats with leg rests forming a couch for sleeping. Wide windows and individual reading lights, modern lounge and dressing rooms. Radio reception. Deluxe coaches between Spokane and Portland.

Buffet Service between Spokane and Portland.

Coffee Shop Car between St. Paul and Spokane. Selling beer, liquor, fruit, candy bars and magazines throughout the day.

Dining Car Service between St. Paul and Spokane. Traditional famous Great Northern meals. Club breakfasts, plate luncheons, table d'hote luncheons, plate dinners, table d'hote dinners. Also a la carte service for all meals.

† Except Sunday. * Passengers may remain in sleeping cars at Portland until 7:30 A.M. c—No. 1 stops at Glasgow to discharge revenue passengers from Minot and East and to receive revenue passengers for Spokane and West where No. 1 is scheduled to stop. d—No. 2 stops at Glasgow to discharge revenue passengers from Spokane and West and to receive revenue passengers for Minot and East where No. 2 is scheduled to stop. e—No. 1 stops at Cut Bank to discharge revenue passengers from Williston and east and to receive revenue passengers for scheduled stops Spokane and West. g—No. 2 stops at Cut Bank to discharge revenue passengers from Spokane and West and to receive revenue passengers for scheduled stops Williston and East. k—No. 3 stops at Glacier Park and Belton to receive revenue passengers for Spokane and West where No. 3 is scheduled to stop and to discharge revenue passengers from Great Falls and East. l—No. 4 stops at Belton and Glacier Park to discharge revenue passengers from Spokane and West and to receive revenue passengers for Great Falls and East where No. 4 is scheduled to stop. (Arrive) (Leave) (Bus service, rail tickets honored)

Light face figures denote A.M. time. Bold face figures denote P.M. time. Ar. Arrive. Lv. Leave. /Stop on Signal.



SPOKANE, PORTLAND AND SEATTLE RAILWAY SYSTEM

S. P. & S. RY. - OREGON TRUNK RY. - OREGON ELECTRIC RY. - (Subsidiaries of Northern Pacific and Great Northern Railways)

PORTLAND - WISHRAM - PASCO - SPOKANE TRAINS

Table with multiple columns for train routes, including Westbound, Read Down and Eastbound, Read Up. Lists stations like Spokane, Portland, Pasco, Wishram, and various branch points with associated times and train numbers.

FOR THROUGH SERVICE AND CONSIST OF ALL TRAINS, SEE PRECEDING PAGES 2 and 3.

A TRANS-CONTINENTAL SYSTEM OF RAILWAYS THROUGH AMERICA'S WONDERLAND

Traversing the northern states between the Pacific Northwest and Chicago presents a veritable wonderland offering passengers a splendid variety of ever-changing scenery. Over these lines, between Portland and Chicago, are operated four of America's famous trains, the Streamlined Empire Builder and the Streamlined Western Star, via S.P. & S. Spokane, G.N. St. Paul, C.B. & Q. Chicago, and the Streamlined North Coast Limited and The Mainstreeter via S. P. & S. Pasco, N. P. St. Paul and C. B. & Q. Chicago where connections are made to all points east and south. These trains provide passengers with every feature of modern railway travel for their comfort, and pleasure.

Light face figures denote A.M. time. Bold face figures denote P.M. time. Ar. Arrive. Lv. Leave. f/Stop on Signal.



SPOKANE, PORTLAND AND SEATTLE RAILWAY SYSTEM

S. P. & S. RY. - OREGON TRUNK RY. - OREGON ELECTRIC RY. - (Subsidiaries of Northern Pacific and Great Northern Railways)

PORTLAND - REDMOND - BEND TRAINS

Table showing train schedules between Portland, Redmond, and Bend, including departure and arrival times for various routes.

EQUIPMENT BETWEEN PORTLAND and BEND
Trains Nos. 4-102 and 103-3. Coaches daily between Portland and Wishram and Daily except Sunday between Wishram and Bend. Observation Lounge Buffet cars daily between Portland and Wishram. See pages 2, 3 and 4.

RAIL TRAVEL CREDIT CARD PLAN

permits purchase of Rail and Pullman tickets from any S. P. & S. Ry. Co. agent on Credit by securing a Credit Card from the Rail Travel Credit Agency, Room 436 Union Station, Chicago, Ill.

RAIL-TRAVEL-OAN-SERVICE

for individual trips may be arranged on application to ticket agent and proper approval of credit.

"DRIVURSELF" RAIL-AUTO SERVICE

provides a new automobile at your destination or stop over point. Ask the agent for further details on any of the above plans.

CLATSOP BEACH SEASIDE - GEARHART PACIFIC OCEAN ALL-YEAR SEASHORE RESORT. Includes an illustration of a beach scene and text describing the resort's amenities.

Surrounded by evergreen forests and a background of mountains, Clatsop Beach has every facility for visitors - golf courses, fishing, amusement places, sea foods, pure water, good hotels, restaurants, cottages, and camps. Along the expanding Columbia River, from Portland to Astoria.

Light face figures denote A.M. time. Bold face figures denote P.M. time. Ar. Arrive. Lv. Leave. f/Stop on Signal. t Telegraph Office.

PORTLAND - ST. HELENS

RAINIER - ASTORIA - CLATSOP BEACH PASSENGER SERVICE

handled by the PACIFIC GREYHOUND LINES

Table showing passenger service routes between Portland, St. Helens, Rainier, Astoria, and Clatsop Beach, including train numbers and times.

S. P. & S. Ry. Local tickets will not be issued or honored on Pacific Greyhound Lines between above stations.

Interline tickets routed S. P. & S. Ry. between above stations and stations east of Portland on or via S. P. & S. Ry. will be honored on Pacific Greyhound Lines.

PACIFIC TRAILWAYS

Table showing Pacific Trailways routes between Portland and Bend, including train numbers and times.

Rail tickets routed via OT - S. P. & S. Railways from or to Central Oregon points will be honored to or from Portland, Oregon by the Mt. Hood Stages (Pacific Trailways). Ask agent for details. * Except Sundays and holidays.

FREIGHT SERVICE

Route your freight shipments via the Spokane, Portland and Seattle Railway for fast and dependable service - between Portland, Astoria, Pasco, Spokane, Yakima, Walla Walla, Pendleton, Lewiston, Bend and all points east and south.

Let Us Handle Your Transportation Problems

FREIGHT SERVICE ONLY

Table showing freight service routes between Portland, St. Helens, and Astoria, including train numbers and times.

PASSENGER SERVICE Operated by PACIFIC GREYHOUND LINES SEE SCHEDULES ABOVE

FREIGHT SERVICE ONLY

is operated on the following Branches S. P. & S. Railway

Table listing freight service branches and stations, including Goldendale Br., Keasey Branch, and Hammond Branch.

Oregon Electric Railway

PORTLAND-SALEM-ALBANY-EUGENE LINE

Table listing stations along the Oregon Electric Railway route between Portland, Salem, Albany, and Eugene.

FOREST GROVE BRANCH

Table listing stations along the Forest Grove Branch route.

SANTIAM BRANCH

Table listing stations along the Santiam Branch route.

Light face figures denote A.M. time. Bold face figures denote P.M. time. Ar. Arrive. Lv. Leave. f/Stop on Signal. t Telegraph Office.



SPOKANE, PORTLAND AND SEATTLE RAILWAY SYSTEM

S. P. & S. RY.—OREGON TRUNK RY.—OREGON ELECTRIC RY.—(Subsidiaries of Northern Pacific and Great Northern Railways)

PORTLAND - PUGET SOUND - BRITISH COLUMBIA

Northern Pacific Ry. - Great Northern Ry. - Union Pacific R. R.
Northbound—Read Down Southbound—Read Up

Table with columns for route (U.P., G.N., N.P.), time, and station names (Portland, Un. Sta., Vancouver, Wn., Kalama, Kelso-Longview, Castle Rock, Chehalis, Centralia, South Bend, East Olympia, Aberdeen, Hoquiam, Seattle, Everett, Bellingham, Vancouver, B.C.).

† Daily except Sunday b To and from Olympia by bus k King Street Station p Stops from Portland and beyond u Union Station

CONNECTIONS AT SPOKANE AND PASCO

Table showing bus connections between Spokane and Pasco, including routes like Great Northern Ry., SPOKANE INT'L.-CAN. PACIFIC, and various bus lines.

Table showing bus connections from Bend, Klamath Falls, and Bieber to various destinations (Portland, Pasco, Walla Walla, etc.) via Northern Pacific and other lines.

MARK YOUR BAGGAGE
All baggage, whether checked or carried with you, should be plainly marked with your name and permanent address. This will insure prompt recovery should it become lost or go astray. Remove all obsolete labels and addresses.
JEWELRY, CURRENCY, VALUABLE PAPERS and LIQUIDS should not be placed in baggage intended for checking. The railway will not assume responsibility for loss of, or damage to such articles.

SOUTHERN PACIFIC COMPANY

Southbound—Read Down Northbound—Read Up

Table with columns for route (329, 19, 11, 9, 12, 20, 10, 330) and station names (Portland, Albany, Corvallis, Eugene, Klamath Falls, Cottage Grove, Roseburg, Grants Pass, Medford, Ashland, Redding, Sacramento, Martinez, Oakland, San Francisco, Los Angeles).

a—via P G Lines Bus from and to Albany.

EQUIPMENT OF TRAINS

Trains 9-10, Shasta Daylight—Streamlined Air Conditioned Train-Radio Parlor Obs. Reclining Chair Cars, Diner, Coffee Shop and Tavern Car. Reserved seat Chair Car. Train 58 will take transfers from No. 9 at Martinez. Train 57 will make transfer to No. 10 at Oakland, 16th Street. Train 11-12, Cascade—(Streamlined, Air Conditioned). Between Portland and San Francisco. Standard sleeping cars with drawing rooms, compartments, bedrooms, roomettes, lounge and dining car. Reserved seat chair car. (Telephone service on Trains 11-12.) Train 19-20, Klamath—(Air Conditioned). Between Portland and San Francisco. Standard sleeping cars, diner, coaches and reclining chair cars. Train 329-330, Rogue River—Between Portland and Ashland. Standard Air Conditioned sleeping car, sections, compartments and drawing room and chair car.

SPOKANE, PORTLAND AND SEATTLE RAILWAY SYSTEM

S. P. & S. RY.—OREGON TRUNK RY.—OREGON ELECTRIC RY.—(Subsidiaries of Northern Pacific and Great Northern Railways)



Sleeping, Parlor Car and Reserved Seat Fares

Federal Tax Extra
For information only. Subject to change without notice.

Table showing fares between various cities (Billings, Bingen, Boston, Bozeman, Buffalo, Butte, Camas, Chicago, Cincinnati, Cleveland, Denver, Detroit, Duluth, Eugene, Fargo, Gardiner, Glacier Park, Grants Pass, Great Falls, Havre, Helena, Kansas City, Klamath Falls, Livingston, Los Angeles, Louisville, Lyle) for Parlor Car, Standard, and Lower Berth.

Ⓞ Railroad Owned Cars.

RATES FOR SLEEPING CAR ACCOMMODATIONS

Table showing rates for accommodations: ROOMETTE, BEDROOM, Bedroom Suite, Compartment, and Drawing Room, categorized by berth type (Upper, Duplex, For One Person, For Two Persons).

INDUSTRIAL LOCATIONS

National concerns continue to come to the Pacific Northwest and are choosing the Portland area as a location for their distribution warehouses. This is not only because of the tremendous growth in population but because of the strategic location for distribution throughout the Pacific Northwest, Alaska, the Hawaiian Islands, and the Orient. In addition, industries requiring lower power costs, better labor, or climatic working conditions, continue to locate throughout the area.

The SP&S RAILWAY SYSTEM owns and serves a great many industrial locations along the Columbia and Willamette Rivers as well as in the cities of both Oregon and Washington. Contact the Industrial Department for information.

R. W. WEST
General Industrial Agent
American Bank Building
P. O. Box 571
Portland 7, Oregon

Through sleeping cars not operated in all trains; fare applies for continuous trip via direct connections. A duplex roomette is a single private room with wash basin and toilet; a bedroom contains lower and upper berth, wardrobe and complete toilet facilities; a compartment is a private room with lower and upper berths, wash basin and toilet; a drawing room has a divan berth in addition.

Exclusive occupancy of a drawing room requires 1/4 adult rail tickets, or their equivalent; for 2 bedrooms en suite 2 such tickets; for compartment, duplex-roomette, single or double bedroom, one such ticket between S. P. & S.-N. P.-G. N. and connections; 1-1/10 tickets between certain other lines; for section, one such ticket for each berth.



SPOKANE, PORTLAND AND SEATTLE RAILWAY SYSTEM

S. P. & S. RY.—OREGON TRUNK RY.—OREGON ELECTRIC RY.—(Subsidiaries of Northern Pacific and Great Northern Railways)



Mt. Hood (11,245 ft.) and Timberline Lodge at the 6000 foot level. Reached by short motor trip or by sight seeing buses from Portland, Oregon. Ski-lift showing above center of lodge extends one mile to 7000 foot level.



Amber Lake—thirty miles west of Spokane on S.P. & S.Ry. main line.



Columbia River—near Wishram, Wash. on S.P. & S.Ry. main line.

SHIP and TRAVEL by TRAIN

for

- fast
- friendly
- convenient
- dependable
- economical

service

ALWAYS ASK THE EXPRESS MAN!

RAILWAY EXPRESS AGENCY

Your Choice of Three Daily Trains

Between

PORTLAND and SPOKANE

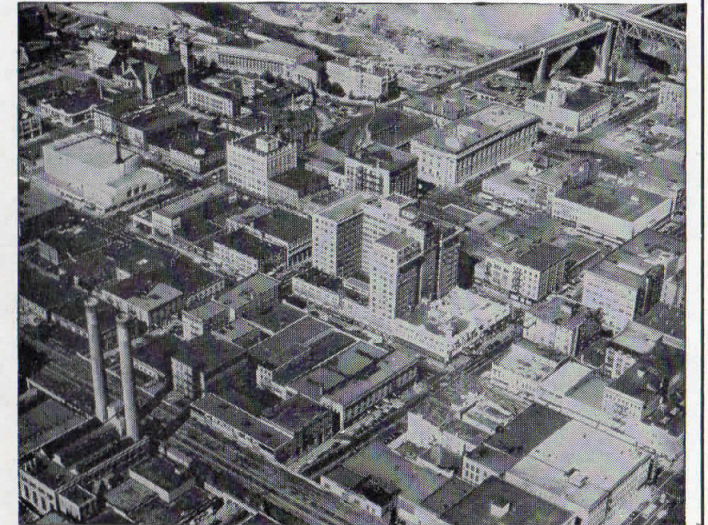
SEE PAGE 4 FOR DETAILED SCHEDULES

SPOKANE, PORTLAND AND SEATTLE RAILWAY SYSTEM

S. P. & S. RY.—OREGON TRUNK RY.—OREGON ELECTRIC RY.—(Subsidiaries of Northern Pacific and Great Northern Railways)



Airplane view of Vancouver, Washington and S.P. & S. bridge across Columbia River



Spokane—Queen City of the Inland Empire

NEED A HOTEL RESERVATION?

Use WESTERN UNION HOTEL ROOM FINDER SERVICE

To make and confirm reservations for the type of accommodations you want at any distant city.

CONVENIENT! FAST! INEXPENSIVE!



Telegram tolls and small service cost may be charged to your Western Union charge account or credit card—or billed direct to you at home or office.



Vital Link Between SPOKANE, PORTLAND & CALIFORNIA
Portland, Pasco, Spokane and East

The AMERICAN RAILROADS Present

The RAILROAD HOUR Famous Musical Shows

NBC NETWORK Every Monday Night

GORDON MacRAE and Guest Stars from Stage, Screen & Radio

NBC Network

Monday Nights

8 to 8:30 P.M. Eastern Standard Time

7 to 7:30 P.M. Central Standard Time

9:30 to 10 P.M. Mountain Standard Time

8:30 to 9 P.M. Pacific Standard Time



Portland—the Rose City



SPOKANE, PORTLAND AND SEATTLE RAILWAY SYSTEM

S. P. & S. RY.—OREGON TRUNK RY.—OREGON ELECTRIC RY.—(Subsidiaries of Northern Pacific and Great Northern Railways)

GENERAL INFORMATION

NOTE—This folder has been compiled with care, but may contain errors. Furthermore, it is sometimes necessary to change schedules without notice, trains shown are sometimes unavoidably delayed and connections missed. We hope none of our patrons will be inconvenienced by any of these causes, but the Railway Company will not be liable therefor.

ADJUSTMENT OF FARES. In cases of dispute with conductors or agents, passengers should pay fare required, take receipt and communicate with Auditor Revenue Accounts, S. P. & S. Ry., Box 571, Portland 7, Ore.

REDEMPTION OF TICKETS. Wholly unused tickets will be redeemed by selling agent. Partly used tickets will be redeemed under tariff regulations on application to Auditor Revenue Accounts.

TICKET LIMITS. Tickets will be honored for continuous passage to destination when presented not later than 4:00 a.m. standard time of the day following date of expiration as punched or otherwise shown on ticket. One-way tickets will be honored for passage within 30 days, round-trip tickets 6 months, in addition to date of sale.

FEDERAL TAX. Fares quoted in this folder do not include 15% Federal tax.

STOPOVERS will be allowed at all regular scheduled stops within limits, on application to Conductor.

CHILDREN'S FARES. Children under five years of age, when accompanied by parent or guardian, will be carried free of charge. Children five years of age and under twelve years of age will be charged one-half of the adult fares. Children of five and under twelve years of age who are not mature enough to take care of themselves when traveling alone must not be ticketed unless accompanied by parent or guardian. Children twelve years of age and over will be charged the adult fare.

MARK YOUR BAGGAGE. All baggage should show name and permanent address of owner. Appropriate gummed labels may be secured from Ticket or Baggage Agent.

HAND BAGGAGE in Pullmans is restricted to what can be conveniently placed in berth or at seat occupied by passenger.

BAGGAGE MAXIMUMS. Ordinarily 150 lbs. is free allowance for each adult ticket. No single piece of baggage exceeding 300 pounds in weight, or 72 inches in greatest dimension, or exceeding \$2500.00 in value will be checked. Free allowances are subject to tariff stipulation as to contents, weight, value and size.

BAGGAGE INSURANCE. A charge of only fifteen cents is made for each hundred dollars value declared above \$100 for baggage checked for each adult passenger and above \$50 for each half-fare ticket. The maximum baggage valuation which may be insured on a single ticket is \$2500.

LIMITED LIABILITY. Excess value of baggage must be declared and paid for at time of checking.

BICYCLES (not motorcycles), baby carriages, dogs and guns are carried in baggage cars subject to tariff regulations.

LOST ARTICLES should be inquired for at the Baggage Office, Union Station, Portland, Oregon, or S. P. & S. Station, Spokane, Wash.

RESPONSIBILITY. No responsibility is assumed for unchecked articles left in stations or cars.

GENERAL OFFICES

Amer. Bank Bldg., 621 S.W. Morrison St., Box 571, Portland 7, Oregon

ROBT. S. MACFARLANE President St. Paul 1, Minn.
JOHN M. BUDD Vice-President St. Paul 1, Minn.
J. C. MOORE Vice-President Portland, Oregon
A. J. HUNT Asst. to Vice-Pres. & Gen. Mgr. Portland, Oregon
GEO. F. EHLEN Traffic Manager Portland, Oregon
H. W. SHIELDS Asst. Traffic Manager Portland, Oregon
W. J. CROSBIE General Passenger Agent Portland, Oregon
E. H. BLOCK General Freight Agent Portland, Oregon
R. W. WEST Gen. Industrial Agent Portland, Oregon
F. J. HARRIS Asst. General Industrial Agent Portland, Oregon
E. H. SHOWALTER General Manager Portland, Oregon
N. S. WESTERGARD Asst. to Gen. Mgr. Portland, Oregon
J. L. MONAHAN Superintendent Portland, Oregon
C. E. BARNES Gen'l Supt. Motive Power Vancouver, Wash.
C. F. THOMAS Secretary and Chief Engineer Portland, Oregon
T. L. PADDEN Treasurer Portland, Oregon
G. R. WILLIAMS Purchasing Agent Portland, Oregon
L. W. ALBERTSON Comptroller Portland, Oregon
H. L. KENDALL Auditor Disbursements Portland, Oregon
E. C. MICHELSEN Auditor Revenue Accounts Portland, Oregon
C. E. BROEDER Auditor Misl. Accounts Portland, Oregon
G. C. GRAHAM Auditor Machine Section Portland, Oregon
W. J. SHEEHAN Gen'l Claim Agent Portland, Oregon
W. P. GARRETT Right of Way and Tax Agent Portland, Oregon
W. T. COWAN Superintendent Dining Cars Portland, Oregon

Representatives

ALBANY, ORE. WM. BODNO (Phone M. 291) ... Agt., O. E. Ry. Sta.
ASTORIA, ORE. R. C. BAKER, 20th & Commercial (Phone 113) Agt.
BEND, ORE. ALBERT ALLEN (Phone 1360) Agt. Passenger Sta.
 G. A. SILK WORTH (Phone 438) ... General Agent
EUGENE, ORE. S. A. SEXSMITH (Ph. 5-8757, 5-8758) Agt. O.E.Ry. Sta.
 W. Z. MYERS (Phone 5-8750, 5-8759) ... General Agt.
 J. H. TAYLOR Traveling Frt. & Pass. Agent
HILLSBORO, ORE. H. SWENSON (Ph. 1944) ... Agt., O.E.Ry. Frt. Depot
JUNCTION CITY, ORE. L. W. MALLORY (Ph. M. 382) Agt., O.E.Ry. Frt. Dep.
LOS ANGELES 14, CALIF.
 Great Northern Railway 510 West Sixth St., Phone Vandike 1201
 S. L. WILLIAMS District Passenger Agent
 Northern Pacific Railway 510 West Sixth St., Phone Trinity 2321
 D. F. WALKER General Agent
OAKLAND 12, CAL.
 Great Northern Railway 611-612 Cen. Bk. Bl., Ph. Templebar 2-7672; 2-7673
 A. F. NIKOLAI General Agent
 Northern Pacific Railway 815 Central Bank Bldg., Ph. Glencourt 1-8717
 J. C. SPRACKLIN General Agent
PORTLAND 7, ORE. A. C. STICKLEY GAPD (SP&S-NP. Rys.)
 439 S.W. 6th Ave., Telephone Capitol 1311
 A. W. GUSEY GAPD (SP&S-GN. Rys.)
 607 S.W. Washington St., Telephone BE. 7273
 J. L. MILLER, Ticket Agt., Union Station, Foot of N.W. 6th Ave., Telephone Broadway 3421
 C. J. LIVINGSTON District Passenger Agent
 H. K. HALLGREN Traffic Representative
 R. A. LAWRENCE General Agent, Freight Dept.
 CLARENCE JOCKSON Trav. Frt. & Pass. Agent
 ALEX H. STUCKERT City Freight Agent
 J. W. JONES City Freight Agent
 G. E. SKINNER City Freight Agent
 P. H. BRINGMANN, Local Freight Agent, N. W. 11th and Hoyt, Phone ATwater 9111
1101 American Bank Building Phone ATwater 9111
REDMOND, ORE. A. F. SHUGERT (Phone 13) ... Agt., Passenger Sta.
SACRAMENTO 14, CAL. T. L. MAY, Gen. Agt., G. N. Ry., 223 Forum Bldg.
ST. HELENS, ORE. J. L. MCGRAW (Phone 658) ... Agt., S.P.&S. Station
SALEM, ORE. J. D. SURLLES (Ph. 4763) Agt., O. E. Ry. Frt. Depot
SAN FRANCISCO 5, CAL.
 Northern Pacific Railway 681 Market St. Phone Sutter 1-1078
 DANIEL TINNEY General Agent
 Great Northern Railway 679 Market St. Phone Sutter 1-6051; 1-6052
 A. L. SCOTT General Agent, Passenger Dept.
SEASIDE, ORE. P. J. MARTELL (Ph. 45) ... Agent, S.P.&S. Ry. Sta.
SPOKANE 8, WASH. R. E. HENDERSHOT General Agent
 D. W. MORRISON, Traveling Frt. & Pass. Agt.
 925 Old National Bank Building, Ph. Main 4238
 RAY L. DUBOIS, General Agent, Passenger Dept.,
 Davenport Hotel, Phone Main 5141
 LEONARD HOLMSTROM, City Passenger & Ticket
 Agt., Sprague Ave. & Wall St. Phone Main 5321
 B. B. McCANNON, Ticket Agent, Gt. Nor. Ry. Sta.
VANCOUVER, WASH. J. CONDRA, Agt. (Ph. Oxford 3-1491), S.P.&S.Ry. Sta.
 K. M. ELLER (Phone Oxford 5-2941) ... Pass. Sta.

Agents of the Great Northern and Northern Pacific Rys. throughout the United States are the direct representatives of the Spokane, Portland and Seattle Railway Co., Oregon Trunk Railway and Oregon Electric Railway Co.

