



Bonneville Dam, adjacent to North Bonneville, Washington, 49 miles east of Portland, Oregon on the main line of the Spokane, Portland and Seattle Railway.

This dam, which is one of the government's greatest power-navigation projects, was built at a cost exceeding \$81,386,000.00. A wonderful view of this great work of engineering and the surrounding mountains ranging in altitude from 2,000 to 5,000 feet, may be seen from the trains of the S. P. & S. Railway.



SEPTEMBER 18, 1949  
Subject to change without notice



THROUGH SERVICE  
VIA

NORTH COAST  
LIMITED



EMPIRE  
BUILDER



TIME TABLES

TRAVEL THE  
COLUMBIA RIVER  
SCENIC ROUTE  
THROUGH THE  
CASCADE RANGE

SEPTEMBER 18, 1949  
Subject to change without notice



THROUGH SERVICE  
VIA

NORTH COAST  
LIMITED



EMPIRE  
BUILDER



TIME TABLES

TRAVEL THE  
COLUMBIA RIVER  
SCENIC ROUTE  
THROUGH THE  
CASCADE RANGE





SPOKANE, PORTLAND AND SEATTLE RAILWAY SYSTEM

S. P. & S. RY. - OREGON TRUNK RY. - OREGON ELECTRIC RY. - (Subsidiaries of Northern Pacific and Great Northern Railways)

TRANSCONTINENTAL TRAIN SERVICE - BETWEEN PORTLAND, PASCO AND EAST

SPOKANE, PORTLAND AND SEATTLE, NORTHERN PACIFIC AND CHICAGO, BURLINGTON AND QUINCY RAILWAYS

Table showing train schedules for West Bound, Read Down and Eastbound, Read Up services between Spokane, Portland, and Seattle, including routes like Northern Pacific Railway and Streamlined North Coast Limited.

Table showing connecting lines for various routes including Spokane, Portland and Seattle Railway, and Spokane, Portland and Seattle Railway.

Table showing connecting lines for routes like Kansas City (C.B. & Q. RR.), St. Joseph, Omaha, Lincoln, Denver, and Billings.

a-Stops to let off or pick up revenue passengers from or to Missoula and east or Pasco and west where scheduled to stop. x Bus. A During park season via Bus. \* Passengers may remain in sleeping cars at Portland until 7:30 A.M.

EQUIPMENT

STREAMLINED NORTH COAST LIMITED BETWEEN PORTLAND AND CHICAGO S. P. & S. 3-4, N. P. 1-2, C. B. & Q. 51-53

OBSERVATION LOUNGE-BUFFET CAR - Between Portland and Spokane.

OBSERVATION LOUNGE-SLEEPING CAR - Between Pasco and Chicago. Four bedrooms, 1 compartment, spacious lounge, radio, library, writing desk. Buffet service.

STANDARD SLEEPING CAR - Between Portland and Chicago. Newest type all-room car. 3 bedrooms, 1 compartment, 6 roomettes, 8 duplex roomettes. (261 eastbound, 251 westbound.)

TOURIST SLEEPING CAR - Between Portland and Spokane. 14 section (PN Eastbound, BR Westbound). Direct car-to-car transfer to modern tourist car to and from Chicago.

LUXURY "DAY-NITE" COACH - Between Portland and Chicago. Chaise longue "sleepy hollow" seats with leg rests for reclining full length.

COACH-BUFFET-LOUNGE - Between Pasco and St. Paul. De Luxe accommodations expressly for coach and tourist car passengers. Seats for 19, tables, writing desk, radio, magazines. Sandwiches and beverages.

DINING CAR SERVICE - Between Pasco and Chicago. New diner-lunch car, with dining section and lunch counter. In dining section: club breakfasts, \$1.00 to \$1.50; Table d'hote dinner, \$2.25; Table d'hote luncheon, \$1.65. Special plate luncheons and dinners, \$1.35. Also a la carte service. At Lunch Counter: Tasty hot plates, 65c to 95c. Soups, sandwiches, salads, desserts, beverages. Breakfast - Fruits and juices, cereals, eggs, toast, rolls, doughnuts, beverages. Combination breakfasts, 65c to 85c.

N. P. 3-4 - ALASKAN (air conditioned)

STANDARD SLEEPING CAR: Spokane-St. Paul: 10 section, 1 compartment, 1 drawing room (Car No. 8 Eastbound, No. 9 Westbound).

CAFE CAR AND RECLINING SEAT COACH: Pasco-St. Paul. A la carte service; also club breakfasts, \$1.00 to \$1.25. Special plate luncheons and dinners, \$1.35.

S. P. & S. No. 5 - 6, (Diesel Power), N. P. No. 4 - 5 - COLUMBIA RIVER EXPRESS - ALASKAN BETWEEN PORTLAND, PASCO AND SPOKANE

Reserved seat buffet coach & Deluxe reclining chair car, (a.c.) Portland-Pasco.

Reserved seat coach, Cafe car and deluxe coaches (a.c.), Pasco and Spokane.

Seats in buffet coach and reserved seat coach must be reserved in advance.

Seat 75c plus tax, Portland-Spokane. (Proportionate fares between intermediate stations-see page 7)

SPOKANE, PORTLAND AND SEATTLE RAILWAY SYSTEM

S. P. & S. RY. - OREGON TRUNK RY. - OREGON ELECTRIC RY. - (Subsidiaries of Northern Pacific and Great Northern Railways)

TRANSCONTINENTAL TRAIN SERVICE - BETWEEN PORTLAND, SPOKANE AND EAST

VIA SPOKANE, PORTLAND AND SEATTLE, GREAT NORTHERN AND CHICAGO, BURLINGTON & QUINCY RAILWAYS

Large table showing train schedules for Westbound, Read Down and Eastbound, Read Up services, including routes like Chicago, Burlington and Quincy Railroad, Great Northern Ry., and Spokane, Portland and Seattle Railway.

† Except Sunday. \* Passengers may remain in sleeping cars at Portland until 7:30 A. M. a-To discharge revenue passengers from Spokane and West and pick up revenue passengers for Minot and East. b-Stops to discharge revenue passengers from Spokane and West, and to receive revenue passengers for scheduled stops East of Havre or South of Shelby. c-Stops to receive revenue passengers for scheduled stops Spokane and West and to discharge revenue passengers from points South of Shelby and East of Williston.



EQUIPMENT

THE STREAMLINED EMPIRE BUILDER PORTLAND-CHICAGO. NO EXTRA FARE. SP&S 1-2, GN 1-2, CB&Q 49-44

OBSERVATION-LOUNGE-CAFE CAR between Portland and Spokane.

OBSERVATION-LOUNGE CAR, (also contains 2 Double Bedrooms and 1 Drawing Room) between Spokane and Chicago (Car 29 eastbound, Car 19 westbound).

STANDARD SLEEPING CAR between Portland and Chicago, 8 Duplex Roomettes, 4 Double Bedrooms and 4 Sections (Car P-28 eastbound, Car P-18 westbound).

LUXURY DAY-NITE COACH, between Portland and Chicago, 48 famed sleepy hollow reclining seats with individual leg rests, controlled reading lights, modern lounge and dressing room (Car P-202 eastbound, Car P-102 westbound). All seats reserved in advance (including seats for children under 5 years of age) at no extra cost.

DE LUXE COACH, between Portland and Spokane, 60 reclining seats. (Seats not reserved.)

BUFFET SERVICE between Portland and Spokane.

LOUNGE-COFFEE SHOP CAR between Spokane and Chicago. Lounge section for accommodation of coach passengers. Club breakfasts \$0.60, \$0.85, and \$1.10, fruits and fruit juices, cereals, eggs, toast, rolls, doughnuts, and beverages. Plate luncheons and dinners \$1.10. Soups, sandwiches, salads, desserts, and beverages, available throughout the day.

DINING CAR SERVICE between Portland and Chicago. Club breakfasts \$1.00, \$1.15, and \$1.35. Plate luncheons \$1.25, table d'hote luncheons \$1.65. Plate dinners \$1.25, table d'hote dinners \$2.25. Also a la carte service for all meals.

RADIO in all cars except sleepers.

TICKETS. All one-way and round-trip tickets will be honored except as follows: tickets endorsed Clergy, Charity, Furlough, Employee, D.V.S., V.A.H., Blind and Attendant, Circus, Show, Banana Messenger, Driver's or Caretaker's tickets and Live Stock Contracts will not be honored.

BAGGAGE. Limited amount of checked baggage will be handled. Remains will not be handled.

THE ORIENTAL LIMITED - PORTLAND-CHICAGO SP&S 3-4, GN 3-4, CB&Q 53-54

All Classes of Tickets Honored.

OBSERVATION-BUFFET-LOUNGE CAR, between Portland and Spokane, also contains 8 sections (Car 10).

OBSERVATION - LOUNGE - CLUB CAR, between Spokane and Chicago, radio, buffet service, women's dressing room and shower bath, barber shop and men's shower bath, valet service.

STANDARD SLEEPING CAR, between Portland and Chicago, 8 sections, 2 Compartments, 1 Drawing Room (Car P-6 eastbound, Car B-6 westbound).

TOURIST SLEEPING CAR, 16 sections, between Portland and Spokane. (Car PJ eastbound, Car BJ westbound.) Direct car to car transfer to Modern Tourist Car to and from Chicago.

DE LUXE RECLINING SEAT COACHES between Portland-Spokane-Chicago.

BUFFET SERVICE between Portland and Spokane.

DINING CAR SERVICE between Spokane and Chicago. Club breakfasts \$1.00, \$1.15, and \$1.35. Plate luncheons \$1.25, table d'hote luncheons \$1.65. Plate dinners \$1.25, table d'hote dinners \$2.25. Also a la carte service for all meals.

d-Stops to discharge revenue passengers from Spokane and West and pickup revenue passengers for Williston and East. e-Stops to discharge revenue passengers from Williston and East and to pick up revenue passengers for Spokane and West. g-To discharge revenue passengers from Minot and East and pick up revenue passengers for Spokane and West.





# SPOKANE, PORTLAND AND SEATTLE RAILWAY SYSTEM

S. P. & S. RY.—OREGON TRUNK RY.—OREGON ELECTRIC RY.—(Subsidiaries of Great Northern and Northern Pacific Railways)

## PORTLAND - WISHRAM - PASCO - SPOKANE TRAINS

Westbound, Read Down					Eastbound, Read Up					
SPS No. 3 Daily	NP 1 SPS 3 Daily	NP 5 SPS 5 Daily	SPS No. 1 Daily	Eleva. ft.	Spokane, Portland and Seattle Railway	Miles from Portland	SPS 6 No. 2 Daily	SPS 4 NP 6 Daily	N. P. No. 2 Daily	SPS No. 4 Daily
9.30	8.55	7.15	12.06	1871 Lv.	Spokane (business capital of...)	379.5		6.35	8.25	6.50
10.26				1920 Lv.	Great No. Station Inland Empire Ar	377.5	7.30	10.55		
10.43	N.P. Ry. No. 1 Operates East of Pasco via N.P. Ry.	N.P. Ry. No. 5 Stops at Cheney Sprague		2292	Nor. Pac. Station Ar	360.3				
11.11				2090	South Cheney (East plateau of...)	349.7				
11.24				1947	Amber (Eastern Wash...)	343.9	N.P. Ry. No. 4	NP Ry. No. 6		
11.34				1826	Rodna	343.9				
11.50				1706	Lamont (West edge great Palouse grain district) Ar	335.4				
12.21				1590	Rockwell	329.4				
1.00	12.01	10.30	3.00	1468	Macall	329.4				
1.15	1.15	10.40	3.05	1468	Lantz	317.4				
f 1.22	f 1.22	f 10.48		1246	Benge	311.2				
		f 10.55		1067	Hooper	299.8				
		f 11.01		964	Washtucna	291.4				
		f 11.07		888	Sperry	285.1				
		f 11.13		719	Kahlotus (Spectacular Devil's Canyon) Ar	277.5				
		f 11.19		496	Farrington	269.1				
		f 11.25		496	Snake River	256.7				
		f 11.31		466	Reed	251.0				
		f 11.37		454	Levey (Canyon)	244.6				
		f 11.43		358	PASCO	231.3				
		f 11.49		358	PASCO	231.3	4.05	7.40	5.25	3.15
		f 11.55		352	Kennewick (Columbia River Crossing) Ar	229.2				
		f 12.01		348	Finley	224.1				
		f 12.07		340	Hover	219.9				
		f 12.13		323	Yellepit (Named after Indian Chief) Ar	213.4				
		f 12.19		303	Berrian (met by Lewis & Clark, 1805-6) Ar	198.2				
		f 12.25		284	No. McNary (McNary Dam) Ar	195.3				
		f 12.31		266	Plymouth (Opp. Old Oregon Trail) Ar	192.9				
		f 12.37		259	King	188.9				
		f 12.43		241	Paterson	180.5				
		f 12.49		242	Whitcomb	170.7				
		f 12.55		230	Alderdale	162.3				
		f 13.01		230	McCredie	157.9				
		f 13.07		216	Roosevelt	146.7				
		f 13.13		203	Sundale	140.8				
		f 13.19		179	Goodnoe	130.6				
		f 13.25		175	Cliffs (Mt. Hood, 11,225 ft. visible) Ar	118.9				
		f 13.31		166	Maryhill	114.3				
		f 13.37		166	WISHRAM (Mt. Hood visible) Ar	106.1				
		f 13.43		161	WISHRAM (Celilo Falls) Ar	106.1	5.15	12.05	12.05	12.05
		f 13.49		123	Avery	102.8				
		f 13.55		101	Northdallas (Mt. Hood visible) Ar	94.0				
		f 14.01		101	LYLE (Memalouse Indian burying t) Ar	85.3				
		f 14.07		101	Bingen-White Salmon (Ht. Hood) Ar	75.6				
		f 14.13		101	Underwood (Apple country) Ar	72.7				
		f 14.19		101	Hood (Mt. Hood, 11,225 ft. visible) Ar	70.9				
		f 14.25		99	Cooks (Mitchell Point to south) Ar	65.8				
		f 14.31		98	Carson	57.7				
		f 14.37		98	Stevenson (Cascades of Columbia) Ar	53.8				
		f 14.43		74	North Bonneville (Bonneville Dam) Ar	48.8				
		f 14.49		51	Skamania (Beacon Rock, alt. 700 ft.) Ar	42.8				
		f 14.55		51	Prindle (Columbia River) Ar	37.8				
		f 15.01		48	Mount Pleasant (Mt. Hood, 11,225 ft.) Ar	32.2				
		f 15.07		48	Washougal (Large woolen mills) Ar	27.6				
		f 15.13		48	Camas (Large paper and pulp mills) Ar	24.4				
		f 15.19		48	Fisher	19.3				
		f 15.25		46	VANCOUVER (founded 1825) Ar	10.0				
		f 15.31		46	VANCOUVER	10.0	9.21	9.21	9.21	9.21
		f 15.37		46	North Portland (Pac. Int. Lvstck. Exp.) Ar	8.6				
		f 15.43		56	East St. Johns (Snow mts.) Ar	7.0				
		f 15.49		32	Union Station	0.0				
		f 15.55		32	PORTLAND (City of Roses) Ar	0.0	3.00	9.00	9.00	9.00

FOR THROUGH SERVICE AND CONSIST OF ALL TRAINS, SEE PRECEDING PAGES 2 and 3.

### A TRANS-CONTINENTAL SYSTEM OF RAILWAYS THROUGH AMERICA'S WONDERLAND

Traversing the northern states between the Pacific Northwest and Chicago presents a veritable wonderland offering passengers a splendid variety of ever-changing scenery.

Over these lines, between Portland and Chicago, are operated four of America's famous trains, the Streamlined Empire Builder and the Oriental Limited, via S. P. & S. Spokane, G. N. St. Paul, C. B. & Q. Chicago, and the Streamlined North Coast Limited and the Alaskan via S. P. & S. Pasco, N. P. St. Paul and C. B. & Q. Chicago where connections are made to all points east and south.

These trains provide passengers with every feature of modern railway travel for their comfort, and pleasure.

Empire Builder and the Oriental Limited, via S. P. & S. Spokane, G. N. St. Paul, C. B. & Q. Chicago, and the Streamlined North Coast Limited and the Alaskan via S. P. & S. Pasco, N. P. St. Paul and C. B. & Q. Chicago where connections are made to all points east and south.

Light face figures denote A. M. time. Bold face figures denote P. M. time. Ar. Arrive. Lv. Leave. / Stop on signal.

# SPOKANE, PORTLAND AND SEATTLE RAILWAY SYSTEM

S. P. & S. RY.—OREGON TRUNK RY.—OREGON ELECTRIC RY.—(Subsidiaries of Northern Pacific and Great Northern Railways)

## PORTLAND - REDMOND - BEND TRAINS

Read Down			Read Up		
Eleva. ft.	No. 103 Daily	Oregon Trunk Ry.	Miles from Portland	No. 102 Daily	Eleva. ft.
3618	8.00	Lv Bend	257.6	6.30	
3572	f 8.18	Deschutes	250.2	f 6.05	
2983	8.50	Redmond	241.1	5.45	
2918	f 8.58	Prineville Jet.	238.4	f 5.20	
2863	f 9.05	Terrebonne	235.6	f 5.15	
2850	f 9.25	Opal City	228.1	f 5.01	
2624	f 9.43	Culver	221.0	4.48	
2517	f 9.55	Metolius	216.3	4.40	
2458	10.10	Madras	211.3	4.30	
2169	10.26	Paxton	205.6	4.04	
1787	10.41	Gateway	200.1	3.48	
1254	11.03	South Jet.	191.9	f 3.26	
1203	f 11.18	Kaskela	186.4	f 3.15	
1102	f 11.31	Davidson	181.5	f 3.05	
1074	f 11.36	Dant	179.7	f 3.01	
1012	f 11.51	Frieda	173.6	f 2.49	
960	f 12.01	Nena	169.9	f 2.41	
852	12.27	Maupin	160.8	2.23	
788	f 12.36	Tuskan	156.9	f 2.15	
783	f 12.44	Sherar	153.8	f 2.09	
606	f 1.10	Oakbrook	146.0	f 1.53	
510	f 1.34	Sinamox	136.7	f 1.34	
508	f 1.50	Dike	132.4	f 1.25	
354	f 2.09	Lookit	124.1	f 1.08	
328	f 2.25	Kloan	117.7	f 1.05	
286	f 2.40	Moody	111.8	f 1.05	
166	3.00	Ar Wishram	106.1	12.30	

**EQUIPMENT BETWEEN PORTLAND and BEND**  
Trains Nos. 4-102 and 103-3 (N.A.C.). Coaches daily between Portland and Wishram and Bend, A.C. observation cars daily between Portland and Wishram, See pages 2, 3 and 4.

## LYLE - KLICKITAT - GOLDENDALE TRAINS

No. 120 Daily ex. Sat.	Miles	S. P. & S. Ry.	Eleva. ft.	No. 121 Daily ex. Sat.
11.55	85.3	Lv Lyle	101	8.40
/12.20	91.7	Wrights	288	f 8.20
/12.35	95.6	Pitt	370	f 8.08
12.45	97.7	Lv Klickitat	440	f 7.58
f 1.00	102.2	Wahkiakus	500	f 7.47
f 1.55	115.5	Warwick	1546	f 7.06
2.15	120.6	Centerville	1586	6.50
2.40	126.9	Ar Goldendale	1610	6.30

Ex. Sat.—Daily except Saturdays.  
Ex. Sun.—Daily except Sundays.

## PACIFIC TRAILWAYS

Read Down					Read Up				
Run 6	Run 4	Run 14	Run 2		Run 1	Run 3	Run 5	Run 13	
12.31	6.30	2.15	7.15	Lv PORTLAND	12.15	6.30	11.40	5.30	
3.45	9.35	5.25	10.30	Ar Maupin	9.00	3.15	8.25	2.20	
5.10	11.10	7.20	12.05	Ar Madras	7.30	1.45	6.55	12.55	
		7.31	12.16	Ar Metolius	7.20	1.34	6.45		
		7.40	12.25	Ar Culver	7.12	1.26	6.37		
6.20	11.53	8.11	12.57	Ar Redmond	6.45	1.00	6.10	11.30	
6.50	12.20	8.40	1.30	Ar BEND	6.15	12.30	5.40	11.00	

Rail tickets routed via OT -- S. P. & S. Railways from or to Central Oregon points will be honored to or from Portland, Oregon by the Mt. Hood Stages (Pacific Trailways). Ask agent for details.

## FREIGHT SERVICE

Route your freight shipments via the Spokane, Portland and Seattle Railway for fast and dependable service—between Portland, Astoria, Spokane, Yakima, Walla Walla, Pendleton, Lewiston, Bend and all points east and south.

Let Us Handle Your Transportation Problems

## PORTLAND - ST. HELENS

Westbound—Read Down			Eastbound—Read Up		
No. 21 Daily	Miles	S. P. & S. Ry.	No. 22 Daily	Miles	S. P. & S. Ry.
8.10	0.0	Lv. PORTLAND, Union Sta. t Ar	6.50	0.0	Ar. ST. HELENS (Station) t
f 8.26	7.3	Linnton	f 6.30	7.3	Linnton
8.49	19.9	Scappoose	6.08	19.9	Scappoose
f 8.56	24.3	Warren	f 6.00	24.3	Warren
9.04	27.6	ST. HELENS (Station) t	5.54	27.6	ST. HELENS (Station) t
f 9.09	30.0	Columbia City	f 5.46	30.0	Columbia City
f 9.14	33.2	Deer Island	f 5.41	33.2	Deer Island
f 9.25	39.4	Goble	f 5.31	39.4	Goble
f 9.30	41.9	Prescott	f 5.26	41.9	Prescott
9.40	45.8	Ar. RAINIER	5.20	45.8	Ar. RAINIER
10.35		Ar. Longview	4.00		Ar. Longview
8.00		Lv. By Direct Bus 30c Ar	6.40		Lv. By Direct Bus 30c Ar
9.40	45.8	Lv. RAINIER	5.20	45.8	Lv. RAINIER
10.02	55.8	Mayger	f 4.59	55.8	Mayger
f 10.06	58.0	Locoda	f 4.55	58.0	Locoda
10.09	59.3	Quincy	f 4.53	59.3	Quincy
10.18	62.2	CLATSKANIE	4.47	62.2	CLATSKANIE
f 10.28	66.6	Marshland	f 4.37	66.6	Marshland
f 10.30	68.5	Woodson	f 4.35	68.5	Woodson
10.39	71.2	Westport	4.29	71.2	Westport
10.44	73.5	Wauna	4.24	73.5	Wauna
f 10.51	76.8	Bradwood	f 4.18	76.8	Bradwood
f 10.56	78.4	Clifton	f 4.14	78.4	Clifton
f 11.05	83.3	Brownmead	f 4.05	83.3	Brownmead
f 11.10	84.9	Blind Slough	f 4.01	84.9	Blind Slough





SPOKANE, PORTLAND AND SEATTLE RAILWAY SYSTEM

S. P. & S. RY. - OREGON TRUNK RY. - OREGON ELECTRIC RY. - (Subsidiaries of Great Northern and Northern Pacific Railways)

PORTLAND - PUGET SOUND - BRITISH COLUMBIA

Table of train schedules for the Portland - Puget Sound - British Columbia route, including Southbound and Northbound services.

Northbound - Read Down, Southbound - Read Up

401 Daily, 459 Daily, 407 Daily, 457 Daily, 460 Daily, 408 Daily, 458 Daily, 402 Daily

11-30, 11-57, 12-49, 1-22, 1-40, 2-43, 2-55, 5-00, 7-10, 7-30, 8-15, 9-17, 10-58, 12-45

Ar. Portland, Un. Sta., Vancouver, Wn., Kalama, Kelso-Longview, Castle Rock, Chehalis, Centralia, South Bend, (b) East Olympia, Tacoma, Aberdeen, Hoquiam, Seattle, Everett, Bellingham, Vancouver, B.C.

Ar. Seattle, Ar. Everett, Ar. Bellingham, Ar. Vancouver, B.C.

Daily except Sunday. a Bus daily b To and from Olympia by bus. King Street Station. p Stops from Portland and beyond. u Union Sta.

CONNECTIONS AT SPOKANE AND PASCO

Table showing connections at Spokane and Pasco, including bus and train services.

Table showing connections at Spokane and Pasco, including bus and train services.

Table showing connections at Spokane and Pasco, including bus and train services.

GREAT NORTHERN RY. BEND, KLAMATH FALLS, BIEBER

Table of train schedules for the Great Northern Ry. route, including Bend, Klamath Falls, and Bieber.

Light face figures denote A.M. time. Bold face figures denote P.M. time. Ar. Arrive. Lv. Leave. / Stop on Signal.

SOUTHERN PACIFIC COMPANY

Southbound - Read Down, Northbound - Read Up

Table of train schedules for the Southern Pacific Company, including Southbound and Northbound services.

a - By Bus

EQUIPMENT OF TRAINS

Trains 9-10 Shasta Daylight - Streamlined Air Conditioned Train- Radio Parlor Obs. Reclining Chair Cars, Diner, Coffee Shop and Tavern Car. All seats reserved.

Train 11-12 Cascade - (Air Conditioned). Between Portland and San Francisco. Standard sleeping cars with sections, drawing rooms, compartments, bedrooms. Lounge and dining car. Reclining Chair Car - Seats Reserved - No Extra Charge.

Train 19-20 Klamath - (Air Conditioned). Between Portland and San Francisco. Standard sleeping cars, cafe lounge car, and coaches and reclining chair cars.

Train 329-330 Rogue River - Between Portland and Ashland. Standard Air Conditioned sleeping car, sections and drawing room and coach. Between Portland and Coos Bay, standard sleeping car and coach.

SAN FRANCISCO - LOS ANGELES - COAST LINE

Table of train schedules for the San Francisco - Los Angeles - Coast Line.

SAN FRANCISCO - LOS ANGELES - VALLEY LINE

Table of train schedules for the San Francisco - Los Angeles - Valley Line.

UNION PACIFIC RAILROAD

Table of train schedules for the Union Pacific Railroad, including Read Down and Read Up services.

SPOKANE, PORTLAND AND SEATTLE RAILWAY SYSTEM

S. P. & S. RY. - OREGON TRUNK RY. - OREGON ELECTRIC RY. - (Subsidiaries of Northern Pacific and Great Northern Railways)



Sleeping, Parlor Car and Reserved Seat Fares

Federal Tax Extra

For information only. Subject to change without notice.

Table of sleeping, parlor car, and reserved seat fares between various cities including Portland and Spokane.

\*Reserved Seat Coach fares on day trains.

RATES FOR SLEEPING CAR ACCOMODATIONS

Table of rates for sleeping car accommodations, including Roomette, Bedroom, and Drawing Room options.

INDUSTRIAL LOCATIONS

Served by the SP&S RAILWAY SYSTEM in Oregon and Washington are many excellent industrial and warehouse sites for those seeking new locations. Abundant raw materials are available for many types of manufacturing and processing.

Contact our Industrial Department for information covering your requirements.

KENNETH C. MILLER

General Industrial and Agricultural Agent

American Bank Building

Portland 7, Oregon

Through sleeping cars not operated in all trains; fare applies for continuous trip via direct connections. A duplex roomette is a single private room with wash basin and toilet; a bedroom contains lower and upper berth, wardrobe and complete toilet facilities; a compartment is a private room with lower and upper berths, wash basin and toilet; a drawing room has a divan berth in addition.

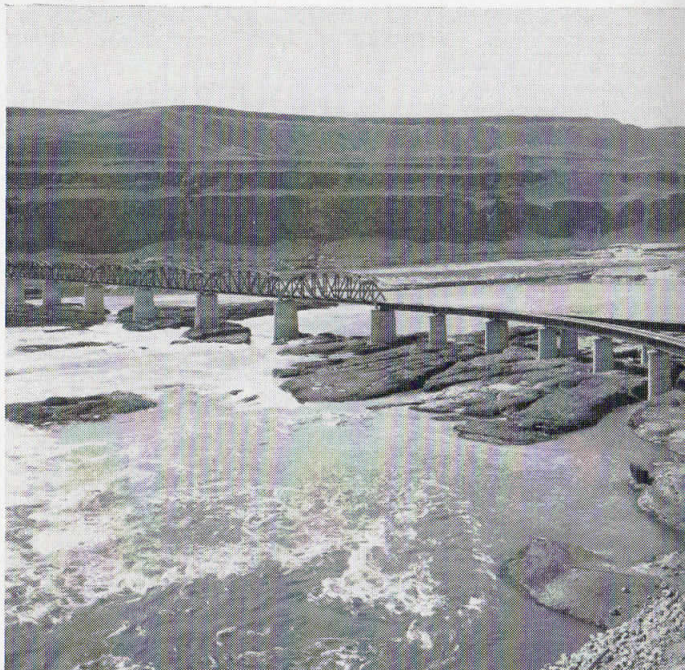
Exclusive occupancy of a drawing room requires 1/4 adult rail tickets, or their equivalent; for compartment, duplex-roomette, single or double bedroom, one such ticket between S. P. & S.-N. P.-G. N. and connections; 1-1/10 tickets between certain other lines; for section, one such ticket for each berth.





# SPOKANE, PORTLAND AND SEATTLE RAILWAY SYSTEM

S. P. & S. RY.—OREGON TRUNK RY.—OREGON ELECTRIC RY.—(Subsidiaries of Northern Pacific and Great Northern Railways)



Railway Bridge across Columbia River, Wishram, Washington, connecting S. P. & S. and O. T. Railways.



Multnomah Falls and Columbia River, East of Portland, Oregon, seen from S. P. & S. Railway Trains.

## The RAILROAD HOUR

WORLD'S GREAT MUSICAL COMEDIES  
by Radio

Every Monday night—set your dial for the Railroad Show Train. It's loaded with celebrities of the stage, screen and radio bringing you the entertaining dialogue and hit songs of Broadway's most popular musical shows.



NBC Network — Monday Nights

8 to 8:30 P.M. Eastern Standard Time | 9:30 to 10 P.M. Mt. Standard Time  
7 to 7:30 P.M. Central Standard Time | 8:30 to 9 P.M. Pacific Standard Time

FOR FAST, NATION-WIDE TRANSPORTATION

Ship it Via  
RAILWAY EXPRESS!



Specify this convenient way for complete, dependable, all-in-one-charge shipping.

NATION-WIDE SERVICE



YOUR CHOICE OF  
*Three Daily Trains*  
Between  
PORTLAND and SPOKANE

(See page 4 for detailed schedules)



# SPOKANE, PORTLAND AND SEATTLE RAILWAY SYSTEM

S. P. & S. RY.—OREGON TRUNK RY.—OREGON ELECTRIC RY.—(Subsidiaries of Northern Pacific and Great Northern Railways)

For the convenience of our patrons, the Spokane, Portland and Seattle Railway Company, in conjunction with other leading railroads, offers three additional travel services as follows:

## RAIL TRAVEL CREDIT CARD PLAN

Travelers using this plan carry just one card, issued by the Rail Travel Credit Agency. Ticket offices of all participating railroads will honor these cards for any travel originating on their lines—for rail, parlor or sleeping car tickets, meal service in dining cars, as well as for baggage charges.

Any company or individual with proper credit rating can use this plan. No deposit, no service charge.

For further information, write

E. B. Padrick, Chairman

RAIL TRAVEL CREDIT AGENCY

Room 436 Union Station

Chicago 6, Illinois

or

H. W. SHIELDS

General Passenger Agent

S. P. & S. RY. CO.

## RAIL-TRAVELOAN-SERVICE

Under this plan, the passenger makes application to ticket agent for transportation desired, filling in information called for on blank provided. If same is approved tickets will be furnished at once and payments made as per contract at nominal interest rate.

## "DRIVURSELF" RAIL-AUTO SERVICE

Enjoy the restfulness of train travel to your destination where you may secure a new automobile for your personal use as long as you wish. Try this plan for business or pleasure trips.

Ask agent or representative for further details on any of the above arrangements.

## SHIP and TRAVEL BY TRAIN



28 passengers can be accommodated in the coach section of the new buffet-lounge coach and 48 passengers in the other post-war coaches now in service on the S. P. & S.-N. P. Streamlined North Coast Limited. These are the comfortable "Sleepy Hollow" seats with leg rest for reclining position.



A leg rest adds to the travel ease of coach passengers on the Empire Builder, new S. P. & S.-G. N. streamlined train.





# SPOKANE, PORTLAND AND SEATTLE RAILWAY SYSTEM

S. P. & S. RY.—OREGON TRUNK RY.—OREGON ELECTRIC RY.—(Subsidiaries of Great Northern and Northern Pacific Railways)

## GENERAL INFORMATION

**NOTE**—This folder has been compiled with care, but may contain errors. Furthermore, it is sometimes necessary to change schedules without notice, trains shown are sometimes unavoidably delayed and connections missed. We hope none of our patrons will be inconvenienced by any of these causes, but the Railway Company will not be liable therefor.

**ADJUSTMENT OF FARES.** In cases of dispute with conductors or agents, passengers should pay fare required, take receipt and communicate with Auditor Revenue Accounts, S. P. & S. Ry., Box 571, Portland 7, Ore.

**REDEMPTION OF TICKETS.** Wholly unused tickets will be redeemed by selling agent. Unused or partly used tickets will be redeemed under tariff regulations on application to Auditor Revenue Accounts.

**USE TICKETS WITHIN LIMIT.** Passengers must reach destination not later than midnight of date punched in margin of tickets, or otherwise indicated. One-way tickets will be honored for passage within 30 days, round-trip tickets 3 months, in addition to date of sale.

**FEDERAL TAX.** Fares quoted in this folder do not include 15% Federal tax.

**STOPOVERS** will be allowed at all stations within limit, on application to Conductor.

**CHILDREN'S FARES.** Children under five years of age, when accompanied by parent or guardian, will be carried free of charge. Children five years of age and under twelve years of age will be charged one-half of the adult fares. Children of five and under twelve years of age who are not mature enough to take care of themselves when traveling alone must not be ticketed unless accompanied by parent or guardian. Children twelve years of age and over will be charged the adult fare.

**MARK YOUR BAGGAGE.** All baggage should show name and permanent address of owner. Appropriate gummed labels may be secured from Ticket or Baggage Agent.

**HAND BAGGAGE** in Pullmans is restricted to what can be conveniently placed in berth or at seat occupied by passenger.

**BAGGAGE MAXIMUMS.** Ordinarily 150 lbs. is free allowance for each adult ticket. No single piece of baggage exceeding 300 pounds in weight, or 72 inches in greatest dimension, or exceeding \$2500.00 in value will be checked. Free allowances are subject to tariff stipulation as to contents, weight, value and size.

**BAGGAGE INSURANCE.** A charge of only fifteen cents is made for each hundred dollars value declared above \$100 for baggage checked for each adult passenger and above \$50 for each half-fare ticket. The maximum baggage valuation which may be insured on a single ticket is \$2500.

**LIMITED LIABILITY.** Excess value of baggage must be declared and paid for at time of checking.

**BICYCLES** (not motorcycles), baby carriages, dogs and guns are carried in baggage cars subject to tariff regulations.

**LOST ARTICLES** should be inquired for at the Baggage Office, Union Station, Portland, Oregon, or S. P. & S. Station, Spokane, Wash.

**RESPONSIBILITY.** No responsibility is assumed for unchecked articles left in stations or cars.

## GENERAL OFFICES EXECUTIVE, TRAFFIC AND PURCHASING DEPARTMENTS American Bank Building, 621 S. W. Morrison Street ACCOUNTING AND OPERATING DEPARTMENTS N. W. Eleventh Avenue and N. W. Hoyt Streets PORTLAND, OREGON

C. E. DENNEY	President	St. Paul 1, Minn.
F. J. GAVIN	Vice-President	St. Paul 1, Minn.
E. B. STANTON	Vice-President and General Manager	Portland 7, Oregon
A. J. HUNT	Asst. to Vice-Pres. and Gen. Mgr.	Portland 7, Oregon
J. C. MOORE	Traffic Manager	Portland 7, Oregon
H. W. SHIELDS	General Passenger Agent	Portland 7, Oregon
GEO. F. HELEN	General Freight Agent	Portland 7, Oregon
KENNETH C. MILLER	Gen. Industrial and Agricultural Agt.	Portland 7, Oregon
E. A. LAWRENCE	Asst. General Industrial Agent	Portland 7, Oregon
E. H. BLOCK	Asst. to the Gen. Frt. Agent	Portland 7, Oregon
E. H. SHAWALTER	Superintendent	Portland 7, Oregon
T. L. THOMAS	Secretary and Chief Engineer	Portland 7, Oregon
G. R. WILLIAMS	Purchasing Agent	Portland 7, Oregon
L. W. ALBERTSON	Comptroller	Portland 7, Oregon
H. L. KENDALL	Auditor Disbursements	Portland 7, Oregon
E. C. BROEDER	Auditor Revenue Accounts	Portland 7, Oregon
C. E. SHEEHAN	Auditor Miscel. Accounts	Portland 7, Oregon
W. J. SHEEHAN	Gen'l. Claim Agent	Portland 7, Oregon
W. P. GARRETT	Right of Way and Tax Agent	Portland 7, Oregon
W. T. COWAN	Superintendent Dining Cars	Portland 7, Oregon

**Representatives**  
**ALBANY, ORE.** WM. BODNO, (Phone M. 291) Agt., O. E. Ry. Sta.  
**ASTORIA, ORE.** R. C. BAKER, 20th and Commercial (Phone 113) Agent  
**BEND, ORE.** ALBERT ALLEN (Phone 1360), Agent Passenger Sta.  
**EUGENE, ORE.** G. A. SILK WORTH (Phone 438) Trav. Frt. & Pass. Agt.  
 S. A. SEXSMITH (Phone 107) Agt., O. E. Ry. Sta.  
 W. Z. MYERS, General Agent  
 W. H. TAYLOR, Traveling Frt. & Pass. Agent  
 L. SHERMAN, (Ph. 1944), Agt., O. E. Ry. Frt. Depot

**HILLSBORO, ORE.** L. W. MALLORY (Ph. M. 382) Agt., O. E. Ry. Frt. Depot  
**LOS ANGELES 14, CALIF.** Great Northern Railway 1016-17 Associated Realty Bldg., Phone Vandike 1201  
 S. L. WILLIAMS, District Passenger Agent  
 G. M. FRENCH, Trav. Pass. Agent  
 Northern Pacific Railway, 519 Associated Realty Bldg., Phone Trinity 2321  
 D. F. WALKER, General Agent  
 J. E. BEATTY, District Pass. Agent  
 G. R. LALLY, Gen. Agt., Gt. Nor. Ry.  
 C. G. ALEXANDER, Dist. Pass. Agt.  
 811-812 Central Bk. Bldg., Ph. Templebar 2-7672; 2-7673  
 J. C. SPRACKLIN, Gen. Agt., Nor. Pac. Ry., 815 Central Bank Building, Phone Glencourt 1-8717.

**PORTLAND 7, ORE.** W. H. DYER, City Pass. Agent  
 A. C. STICKLEY, GAPD (SP&S - NP. Rys.)  
 439 S.W. 6th Avenue, Telephone Capitol 1311  
 A. W. GUSEY, GAPD (SP&S - GN. Rys.)  
 607 S.W. Washington Street Telephone BE. 7273  
 J. L. MILLER, Ticket Agent, Union Station, Foot of N. W. 6th Avenue, Telephone Broadway 3421.  
 C. J. LIVINGSTON, District Passenger Agent  
 H. K. HALLGREN, Traffic Representative  
 R. W. WEST, General Agent, Freight Dept.  
 F. J. HARRIS, Trav. Freight and Pass. Agent  
 T. J. MARTIN, City Freight Agent  
 HAROLD F. ERZ, City Freight Agent  
 P. H. BRINGMANN, Local Freight Agent, N. W. 11th and Hoyt, Phone ATwater 9111

**1101 American Bank Building Phone ATwater 9111**  
**REDMOND, ORE.** R. L. HOUGH, (Phone 13) Agt., Passenger Station  
**SACRAMENTO 14, CAL.** T. L. MAY, Gen. Agt., Gt. Nor. Ry., 223 Forum Bldg.  
**ST. HELENS, ORE.** J. L. MCGRAW (Phone 658), Agt., S.P.&S. Station  
**SALEM, ORE.** J. B. HENSHAW (Phone 4763) Agt., O.E.Ry.Frt. Depot  
**SAN FRANCISCO 5, CAL.** Northern Pacific Railway, 657 Market St. Phone Sutter 1-1078.  
 DANIEL TINNEY, General Agent  
 R. L. PREFONTAINE, City Pass. Agt.  
 Great Northern Railway, 679 Market Street, Phone Sutter 1-6051; 1-6052.  
 A. L. SCOTT, General Agent, Passenger Dept.  
 R. W. GREENMAN, City Passenger Agent  
**SEASIDE, ORE.** A. W. CANNON (Phone 45), Agent, S.P. & S. Ry. Sta.  
 R. E. HENDERSHOTT, General Agent  
**SPOKANE 3, WASH.** D. W. MORRISON, City Frt. and Pass. Agt.  
 925 Old National Bank Building, Phone Main 4238.  
 R. C. MURPHY, General Agent, Passenger Dept.  
 Davenport Hotel, Phone Main 5141.  
 E. F. BAIRD, City Passenger and Ticket Agt., Sprague Ave. and Wall St. Phone Main 5321.  
 H. W. GREEN, Ticket Agent, Gt. Nor. Ry. Sta.  
 J. CONDR, Agt. (Phone 2881), S.P.&S. Ry. Sta.  
 R. I. THOMPSON (Phone 735), Passenger Station

**VANCOUVER, WASH.** Agents of the Great Northern and Northern Pacific Railways throughout the United States are the direct representatives of the Spokane, Portland and Seattle Railway Company, Oregon Trunk Railway and Oregon Electric Railway Company.

