

Bonneville Dam, adjacent to North Bonneville, Washington, 49 miles east of Portland, Oregon on the main line of the Spokane, Portland and Seattle Railway.

This dam, which is one of the government's greatest power-navigation projects, was built at a cost exceeding \$81,386,000.00. A wonderful view of this great work of engineering and the surrounding mountains ranging in altitude from 2,000 to 5,000 feet, may be seen from the trains of the S. P. & S. Railway.



AUGUST 7, 1949  
Subject to change without notice



**THROUGH SERVICE  
VIA**

NORTH COAST  
LIMITED



EMPIRE  
BUILDER



# TIME TABLES

**TRAVEL THE  
COLUMBIA RIVER  
SCENIC ROUTE  
THROUGH THE  
CASCADE RANGE**

AUGUST 7, 1949  
Subject to change without notice



**THROUGH SERVICE  
VIA**

NORTH COAST  
LIMITED



EMPIRE  
BUILDER



# TIME TABLES

**TRAVEL THE  
COLUMBIA RIVER  
SCENIC ROUTE  
THROUGH THE  
CASCADE RANGE**





# SPOKANE, PORTLAND AND SEATTLE RAILWAY SYSTEM

S. P. & S. RY.—OREGON TRUNK RY.—OREGON ELECTRIC RY.—(Subsidiaries of Northern Pacific and Great Northern Railways)

## TRANSCONTINENTAL TRAIN SERVICE—BETWEEN PORTLAND, PASCO AND EAST

### SPOKANE, PORTLAND AND SEATTLE, NORTHERN PACIFIC AND CHICAGO, BURLINGTON AND QUINCY RAILWAYS

West Bound, Read Down

Eastbound, Read Up

Daily North Coast Ltd. No. 51	Daily Alaska No. 4J	Chicago, Burlington and Quincy Railway (Central Time)	Miles from Portland	Daily Alaska Zephyr No. 22	Daily North Coast Ltd. No. 50
11.00	1.00	Lv Chicago (Union Station).....Ar	2327	2.40	7.45
11.48	1.35	Lv Aurora.....Ar	2239	2.02	6.54
2.04	3.17	Lv Savanna.....Ar	2182	12.28	4.23
2.20	3.40	" Dubuque.....Ar	2145	12.05	3.55
4.54	5.21	" LaCrosse.....Ar	2030	10.20	1.21
5.25	5.49	" Winona.....Ar	2006	10.00	12.45
8.00	7.45	Ar St. Paul (Union Station).....Lv	1900	8.25	10.45
No. 1	No. 3	Northern Pacific Railway		No. 4	No. 2
9.00	9.10	Lv St. Paul (Union Station).....Ar	1900	7.45	10.00
9.35	9.55	Lv Minneapolis (Hen. Av. Stn.)Ar	1890	7.10	9.27
7.35	7.40	Lv Duluth.....Ar	1881	8.00	10.50
7.50	7.52	" Superior.....Ar	1877	7.44	10.34
12.11	1.25	Lv Staples.....Ar	1733	3.00	6.40
2.55	5.45	" Fargo.....Ar	1622	10.50	4.00
5.04	8.55	" Jamestown.....Ar	1530	7.30	2.00
7.15	12.10	" Bismarck.....Ar	1428	4.35	12.10
6.40	11.45	" Mandan. (Mountain Time).....Ar	1423	2.55	10.40
9.02	2.43	" Dickinson.....Ar	1322	11.45	8.30
11.40	5.43	" Glendive.....Ar	1217	1.10	6.00
1.27	7.33	" Miles City.....Ar	1138	10.55	4.18
2.40	8.53	" Forsyth.....Ar	1093	9.40	3.10
5.10	11.35	Lv Billings.....Ar	991	7.00	12.50
A 7.30	A 7.30	Lv Gardiner (Yel. Nat'l Park).....Ar	929	A 10.15	A 10.15
8.00	3.00	Lv Livingston.....Ar	875	4.00	10.25
8.58	4.02	" Bozeman.....Ar	851	3.05	9.30
12.25	7.45	" Butte.....Ar	756	11.10	6.20
1.15	7.30	" Helena.....Ar	753	11.25	5.40
1.40	9.35	" Garrison.....Ar	704	7.00	5.00
3.15	11.35	" Missoula.....Ar	636	7.00	3.35
4.15	1.20	" Paradise. (Pacific Time).....Ar	565	3.35	12.30
6.52	4.33	" Sand Point.....Ar	446	11.53	10.12
7.31	5.13	" Athol.....Ar	418	10.55	a 9.35
8.25	6.20	Ar Spokane (N.P. Station).....Lv	378	9.45	8.50

### Connecting Lines

No. 5	No. 3	No. 3	Spokane, Portland and Seattle Railway	No. 6	No. 4	No. 4
10.40	1.30	1.30	Lv Pasco.....Ar	231	3.45	2.55
1.20	4.05	4.05	Ar Wishram.....Lv	106	12.32	12.20
3.55	6.40	6.40	" Vancouver.....Ar	10	9.30	9.30
4.25	7.15	7.15	Ar Portland. (Union Station).....Lv	0	9.00	9.00

a—Stops to let off or pick up revenue passengers from or to Missoula and east or Pasco and west where scheduled to stop.

x Bus. A During park season via Bus.

## EQUIPMENT

### STREAMLINED NORTH COAST LIMITED BETWEEN PORTLAND AND CHICAGO S. P. & S. 3-4, N. P. 1-2, C. B. & Q. 51-50

**OBSERVATION LOUNGE-BUFFET CAR** — Between Portland and Spokane.

**OBSERVATION LOUNGE-SLEEPING CAR** — Between Pasco and Chicago.

Four bedrooms, 1 compartment, spacious lounge, radio, library, writing desk. Buffet service.

**STANDARD SLEEPING CAR** — Between Portland and Chicago. Newest type all-room car. 3 bedrooms, 1 compartment, 6 roomettes, 8 duplex roomettes. (261 eastbound, 251 westbound.)

**TOURIST SLEEPING CAR** — Between Portland and Spokane. 14 section (PN Eastbound, BR Westbound). Direct car-to-car transfer to modern tourist car to and from Chicago.

**LUXURY "DAY-NITE" COACH** — Between Portland and Chicago. Chaise lounge "sleepy hollow" seats with leg rests for reclining full length.

**COACH-BUFFET-LOUNGE** — Between Pasco and St. Paul. De Luxe accommodations expressly for coach and tourist car passengers. Seats for 19, tables, writing desk, radio, magazines. Sandwiches and beverages.

**DINING CAR SERVICE** — Between Pasco and Chicago. New diner-lunch car, with dining section and lunch counter. In dining section: club breakfasts, \$1.00 to \$1.50; Table d'hote dinner, \$2.25; Table d'hote luncheon, \$1.65. Special plate luncheons and dinners, \$1.35. Also a la carte service. At Lunch Counter: Tasty hot plates, 65c to 95c. Soups, sandwiches, salads, desserts, beverages.

Breakfast — Fruits and juices, cereals, eggs, toast, rolls, doughnuts, beverages. Combination breakfasts, 65c to 85c.

### N. P. 3-4—ALASKAN (air conditioned)

#### STANDARD SLEEPING CAR:

Spokane-St. Paul: 10 section, 1 compartment, 1 drawing room (Car No. 8 Eastbound, No. 9 Westbound).

#### CAFE CAR AND RECLINING SEAT COACH:

Pasco-St. Paul. A la carte service; also club breakfasts, \$1.00 to \$1.25. Special plate luncheons and dinners, \$1.35.

### S. P. & S. No. 5 - 6, (Diesel Power), N. P. No. 4 - 5 — COLUMBIA RIVER EXPRESS—ALASKAN BETWEEN PORTLAND, PASCO AND SPOKANE

Reserved seat buffet coach & Deluxe reclining chair car, (a.c.)Portland-Pasco.

Reserved seat coach, Cafe car and deluxe coaches (a.c.), Pasco and Spokane.

Seats in buffet coach and reserved seat coach must be reserved in advance.

Seat 75c plus tax, Portland—Spokane. (Proportionate fares between intermediate stations—see page 7)

N.A.C. Non-air Conditioned. Light face figures denote A.M. time. Bold face figures denote P.M. time. Ar. Arrive. Lv. Leave. / Stop on Signal. A.C. Air Conditioned

# SPOKANE, PORTLAND AND SEATTLE RAILWAY SYSTEM

S. P. & S. RY.—OREGON TRUNK RY.—OREGON ELECTRIC RY.—(Subsidiaries of Northern Pacific and Great Northern Railways)

## TRANSCONTINENTAL TRAIN SERVICE—BETWEEN PORTLAND, SPOKANE AND EAST

### VIA SPOKANE, PORTLAND AND SEATTLE, GREAT NORTHERN AND CHICAGO, BURLINGTON & QUINCY RAILWAYS

Westbound, Read Down			Eastbound, Read Up				
Daily No. 53	Daily Oriental Ltd. No. 53	Daily Empire Builder No. 49	Chicago, Burlington and Quincy Railroad (Central Time)	Miles from Portland	Daily Oriental Ltd. No. 54	Daily Empire Builder No. 44	Daily No. 22
11.15	11.15	1.00	Lv Chicago (Un. Stn.).....Ar	2260	8.15	2.00	2.40
12.03	12.03	1.36	" Aurora.....Ar	2222	7.23	1.18	2.02
2.31	2.31	3.17	" Savanna.....Ar	2115	4.34	11.30	12.28
3.15	3.15	3.55	" East Dubuque.....Ar	2076	3.40	10.50	11.48
5.23	5.23	5.21	" LaCrosse.....Ar	1963	1.43	9.17	10.20
5.55	5.55	5.40	" Winona.....Ar	1933	1.10	8.55	10.00
8.15	8.15	7.45	Ar St. Paul (Un. Stn.).....Lv	1833	11.15	7.15	8.25

C'ch's only No. 27	No. 3	No. 1	Great Northern Ry.	No. 4	No. 2	C'ch's only No. 28
9.30	9.10	8.15	Lv St. Paul (Un. Stn.).....Ar	1833	10.30	7.00
10.03	9.40	8.45	" Minneapolis (GN Stn.).....Ar	1822	10.00	6.30
11.45	11.30	10.16	Lv Willmar.....Ar	1731	7.33	4.47
1.52	2.03	12.05	" Breckenridge.....Ar	1618	5.25	3.02
3.10	3.25	1.06	" Fargo.....Ar	1571	3.55	1.59
5.33	5.25	3.06	" Grand Forks.....Ar	1493	1.45	.....
7.35	10.50	4.55	" New Rockford.....Ar	1447	.....	11.48
10.20	1.50	7.20	Lv Minot.....Ar	1338	8.45	10.05
9.25	12.55	6.20	Ar Williston (Central Time).....Lv	1218	6.10	7.40
12.25	4.30	9.10	Lv Williston (Mountain " ).....Ar	1218	5.05	6.40
3.30	8.10	12.05	" Glasgow.....Ar	1062	1.45	3.45
7.00	11.30	4.00	" Havre.....Ar	909	10.25	12.55
11.30	7.05	9.00	Ar Great Falls.....Lv	903	6.50	9.00
6.35	10.30	2.10	Lv Shelby.....Ar	804	8.10	10.45
7.15	11.05	e 2.45	" Cut Bank.....Ar	780	7.38	d 10.16
f 8.39	c 12.35	Streamlined	" Glacier Park.....Ar	733	b 6.30	d 9.59
f 10.37	c 2.15	Empire	" Belton.....Ar	676	b 4.40	f 8.01
9.35	2.38	Builder	" Columbia Falls.....Ar	661	4.15	.....
11.20	3.05	6.15	Lv Kalispell.....Ar	676	4.35	Empire
2.30	f 5.57	6.15	Lv Whitefish.....Ar	653	3.45	6.55
3.00	6.25	9.15	" Libby.....Ar	537	f 1.05	3.25
2.05	5.30	8.15	Ar Troy (Mountain Time).....Lv	519	12.40	3.55
3.05	f 6.30	.....	Lv Troy (Pacific Time).....Ar	519	11.35	2.55
4.00	f 7.15	11.30	" Bonner's Ferry.....Ar	488	f 10.37	12.30
6.20	9.15	.....	Lv Sand Point.....Ar	454	f 9.54	11.30
.....	.....	.....	Ar Spokane (GN Stn.).....Lv	379	8.05	11.30

No. 3	No. 3	No. 1	Spokane, Portland and Seattle Railway	No. 4	No. 2	No. 4
9.45	9.45	12.06	Lv Spokane, GN Stn.....Ar	379	6.50	10.55
1.30	1.30	3.05	" Pasco.....Lv	231	3.15	7.40
4.05	4.05	5.20	Ar Wishram.....Lv	106	12.20	5.15
6.40	6.40	7.05	" Vancouver.....Ar	10	9.30	3.23
7.15	7.15	7.30	Ar Portland, Un. Stn.....Lv	0	9.00	3.00

Connecting Trains						
.....	.....	4.30	Lv Duluth.....(GN).....Ar	.....	.....	11.58
.....	.....	4.45	" Superior.....Ar	.....	.....	11.43
.....	.....	7.30	" Minneapolis.....Ar	.....	.....	8.27
.....	.....	8.00	Ar St. Paul.....Lv	.....	.....	8.00
.....	.....	.....	Lv Duluth.....Ar	.....	7.15	.....
.....	.....	.....	Ar Grand Forks.....Lv	.....	10.45	.....

No. 3	No. 3	No. 1	Spokane, Portland and Seattle Railway	No. 4	No. 2	No. 4
6.30	.....	.....	Lv Kansas City (CB & Q).....Ar	2090	1.20	.....
8.17	.....	.....	" St. Joseph.....Ar	2026	11.45	.....
10.20	.....	.....	Lv Omaha.....Ar	1935	8.55	.....
12.05	.....	.....	Lv Lincoln.....Ar	1880	7.00	.....
9.00	.....	.....	Lv Denver.....Ar	1709	6.30	.....
8.45	.....	.....	Ar Billings.....Lv	1039	8.00	.....
11.30	.....	.....	Lv Billings.....(GN).....Ar	1039	6.30	.....
7.05	.....	.....	Lv Great Falls.....Ar	903	11.15	.....
10.05	.....	.....	Ar Shelby.....Lv	804	8.30	.....

† Except Sunday. ‡ Daily except Monday. a—To discharge revenue passengers from Spokane and West and pick up revenue passengers for Minot and East. b—Stops to discharge revenue passengers from Spokane and West, and to receive revenue passengers for scheduled stops East of Havre or South of Shelby. c—Stops to receive revenue passengers for scheduled stops Spokane and West and to discharge revenue passengers from points South of Shelby and East of Williston.

N.A.C. Non-air Conditioned. Light face figures denote A.M. time. Bold face figures denote P.M. time. Ar. Arrive. Lv. Leave. / Stop on Signal.



## EQUIPMENT

### THE STREAMLINED EMPIRE BUILDER PORTLAND-CHICAGO. NO EXTRA FARE. SP&S 1-2, GN 1-2, CB&Q 49-44

**OBSERVATION-LOUNGE-CAFE CAR** between Portland and Spokane.

**OBSERVATION-LOUNGE CAR**, (also contains 2 Double Bedrooms and 1 Drawing Room) between Spokane and Chicago (Car 29 eastbound, Car 19 westbound).

**STANDARD SLEEPING CAR** between Portland and Chicago, 8 Duplex Roomettes, 4 Double Bedrooms and 4 Sections (Car P-28 eastbound, Car P-18 westbound).

**LUXURY DAY-NITE COACH**, between Portland and Chicago, 48 famed sleepy hollow reclining seats with individual leg rests, controlled reading lights, modern lounge and dressing room (Car P-202 eastbound, Car P-102 westbound). All seats reserved in advance (including seats for children under 5 years of age) at no extra cost.

**DE LUXE COACH**, between Portland and Spokane, 60 reclining seats. (Seats not reserved.)

**BUFFET SERVICE** between Portland and Spokane.

**LOUNGE-COFFEE SHOP CAR** between Spokane and Chicago. Lounge section for accommodation of coach passengers. Club breakfasts \$0.60, \$0.85, and \$1.10, fruits and fruit juices, cereals, eggs, toast, rolls, doughnuts, and beverages. Plate luncheons and dinners \$1.10. Soups, sandwiches, salads, desserts, and beverages, available throughout the day.

**DINING CAR SERVICE** between Spokane and Chicago. Club breakfasts \$1.00, \$1.15, and \$1.35. Plate luncheons \$1.25, table d'hote luncheons \$1.65. Plate dinners \$1.25, table d'hote dinners \$2.25. Also a la carte service for all meals.

**RADIO** in all cars except sleepers.

**TICKETS.** All one-way and round-trip tickets will be honored except as follows: tickets endorsed Clergy, Charity, Furlough, Employee, D.V.S., V.A.H., Blind and Attendant, Blind and Guide Dog, will not be honored. Circus, Show Banana Messenger, Drover's or Caretaker's tickets and Live Stock Contracts will not be honored.

**BAGGAGE.** Limited amount of checked baggage will be handled. Remains will not be handled.

### THE ORIENTAL LIMITED — PORTLAND-CHICAGO SP&S 3-4, GN 3-4, CB&Q 53-54 All Classes of Tickets Honored.

**OBSERVATION-BUFFET-LOUNGE CAR**, between Portland and Spokane, also contains 8 sections (Car 10).

**OBSERVATION-LOUNGE-CLUB CAR**, equipped with radio, between Spokane and Chicago.

**STANDARD SLEEPING CAR**, between Portland and Chicago, 8 sections, 2 Compartments, 1 Drawing Room (Car P-6 eastbound, Car B-6 westbound).

**TOURIST SLEEPING CAR**, 16 sections, between Portland and Spokane. (Car PJ eastbound, Car BJ westbound.) Direct car to car transfer to Modern Tourist Car to and from Chicago.

**DE LUXE RECLINING SEAT COACHES** between Portland-Spokane-Chicago.

**BUFFET SERVICE** between Portland and Spokane.

**DINING CAR SERVICE** between Spokane and Chicago. Club breakfasts \$1.00, \$1.15, and \$1.35. Plate luncheons \$1.25, table d'hote luncheons \$1.65. Plate dinners \$1.25, table d'hote dinners \$2.25. Also a la carte service for all meals.

d—Stops to discharge revenue passengers from Spokane and West and pickup revenue passengers for Williston and East. e—Stops to discharge revenue passengers from Williston and East and to pick up revenue passengers for Spokane and West. g—To discharge revenue passengers from Minot and East and pick up revenue passengers for Spokane and West.





# SPOKANE, PORTLAND AND SEATTLE RAILWAY SYSTEM

S. P. & S. RY.—OREGON TRUNK RY.—OREGON ELECTRIC RY.—(Subsidiaries of Great Northern and Northern Pacific Railways)

## PORTLAND - WISHRAM - PASCO - SPOKANE TRAINS

Westbound, Read Down				Eastbound, Read Up				SPECIAL STOPS						
No. 3 Daily	No. 3 Daily	No. 5 Daily	No. 1 Daily	Ele-va.	Spokane, Portland and Seattle Railway	Miles from Port-land	No. 6 Daily	No. 2 Daily	No. 4 Daily	No. 4 Daily	No's 1 & 2 Stops only as shown			
9.45	8.55	7.15	12.06	1871	Spokane (business capital of...)	379.5		10.55		6.50	No. 3. At any station to discharge revenue passengers from east of Spokane.			
10.39	N.P. Ry. Train No. 1 Operates East of Pasco	N.P. Ry. No. 5 East of Pasco		1920	Great No. Station Inland Empire Ar	377.5	N.P. Ry No. 4			6.02				
10.56				2292	Nor. Pac. Station	375.0	East of Pasco	Oper-ates east of Pasco		5.44	At any station east of Pasco to receive revenue passengers for Vancouver and Portland.			
				2215	South Cheney (Vast plateaus of Eastern Wash.)	360.3	Cheney	Stream-Lined Empire Builder		5.12				
				2090	Amber	349.7	Cheney			4.58	At any station west of Pasco to receive revenue passengers for Spokane.			
				1947	Rodna	343.9	Cheney			4.29				
				1826	Lamont (West edge great Palouse grain district)	335.4	Cheney			3.57	Stops to receive passengers made only upon advance arrangements through Agent. Stops to discharge passengers made upon application to conductor.			
				1706	Rockwell	329.4	Cheney			3.49				
				1590	Macall	323.4	Cheney			3.15	b Will stop on signal to receive revenue passengers for Bingen-White Salmon, Vancouver and Portland.			
				1468	Lantz	317.4	Cheney			2.55				
				1246	Benge	311.2	Cheney			2.07	f Stop on signal.			
				1067	Hooper	299.8	Cheney			1.58				
				964	Washtucna	291.4	Cheney			1.20	h Will stop to discharge revenue passengers from Portland, Vancouver and Bingen-White Salmon.			
				719	Sperry	285.1	Cheney			0.90				
				496	Kahlotus (Spectacular Devil's Canyon)	277.5	Cheney			0.00	m Stops to receive or discharge revenue passengers to or from Pasco and East.			
				466	Farrington	269.1	Cheney			0.00				
				454	Snake River	256.7	Cheney			0.00				
				454	Redd	251.0	Cheney			0.00				
				358	Levey	244.6	Cheney			0.00				
				358	PASCO	231.3	Cheney			0.00				
				358	PASCO	231.3	Cheney			0.00				
				352	Kennewick (Columbia River Crossing)	229.2	Cheney			0.00				
				348	Finley	224.1	Cheney			0.00				
				340	Hover	219.9	Cheney			0.00				
				323	Yellepit (Named after Indian Chief Berrian met by Lewis & Clark, 1805-6)	213.4	Cheney			0.00				
				303	No. McNary (McNary Dam)	198.2	Cheney			0.00				
				284	Plymouth (Opp. Old Oregon Trail)	195.3	Cheney			0.00				
				266	King	188.9	Cheney			0.00				
				259	Paterson	180.5	Cheney			0.00				
				241	Whitcomb	170.7	Cheney			0.00				
				242	Alderdale	162.3	Cheney			0.00				
				242	McCredie	157.9	Cheney			0.00				
				230	Roosevelt	146.7	Cheney			0.00				
				203	Sundale	140.8	Cheney			0.00				
				179	Goodie	130.6	Cheney			0.00				
				175	Cliffs (Mt. Hood, 11,225 ft. visible)	118.9	Cheney			0.00				
				166	Maryhill	114.3	Cheney			0.00				
				166	WISHRAM (Mt. Hood visible) t Lv	106.1	Cheney			0.00				
				161	Along the North Bank of Columbia River	106.1	Cheney			0.00				
				123	Northdalles (Mt. Hood visible)	102.8	Cheney			0.00				
				101	BYLE (Memalosee Indian burying)	85.3	Cheney			0.00				
				101	Bingen-White Salmon (Mt. Hood)	75.6	Cheney			0.00				
				101	Underwood (Apple country)	72.7	Cheney			0.00				
				101	Hook (Mt. Hood, 11,225 ft. visible)	70.9	Cheney			0.00				
				99	Goods (Mitchell Point to south)	65.8	Cheney			0.00				
				98	Carson	57.7	Cheney			0.00				
				98	Stevenson (Cascades of Columbia)	53.8	Cheney			0.00				
				74	North Bonneville (Bonneville Dam)	48.8	Cheney			0.00				
				51	Skamania (Beacon Rock, alt. 700 ft.)	42.8	Cheney			0.00				
				48	Prindie (Columbia River)	37.2	Cheney			0.00				
				48	Mount Pleasant (Mt. Hood, 11,225 ft.)	32.6	Cheney			0.00				
				48	Washnoug (Large woolen mills)	27.6	Cheney			0.00				
				48	Chamas (Large paper and pulp mills)	24.4	Cheney			0.00				
				48	Fisher	19.3	Cheney			0.00				
				48	1805-6 VANCOUVER (founded 1825) t Lv	10.0	Cheney			0.00				
				46	LV... VANCOUVER	10.0	Cheney			0.00				
				46	North Portland (Pac. Int. Lvstck. Exp.)	8.6	Cheney			0.00				
				46	East St. Johns	7.0	Cheney			0.00				
				46	Union Station	0.0	Cheney			0.00				
				32	Ar... PORTLAND (City of Roses) t Lv	0.0	Cheney			0.00				

FOR CONSIST OF ALL TRAINS, SEE PRECEDING PAGES 2 and 3.

### A TRANS-CONTINENTAL SYSTEM OF RAILWAYS THROUGH AMERICA'S WONDERLAND

Traversing the northern states between the Pacific Northwest and Chicago presents a veritable wonderland offering passengers a splendid variety of ever-changing scenery.

Over these lines, between Portland and Chicago, are operated four of America's famous trains, the Streamlined

Empire Builder and the Oriental Limited, via S. P. & S. Spokane, G. N. St. Paul, C. B. & Q. Chicago, and the Streamlined North Coast Limited and the Alaskan via S. P. & S. Pasco, N. P. St. Paul and C. B. & Q. Chicago where connections are made to all points east and south.

These trains provide passengers with every feature of modern railway travel for their comfort and pleasure.

Light face figures denote A. M. time. Bold face figures denote P. M. time. Ar. Arrive. Lv. Leave. f Stop on signal.

# SPOKANE, PORTLAND AND SEATTLE RAILWAY SYSTEM

S. P. & S. RY.—OREGON TRUNK RY.—OREGON ELECTRIC RY.—(Subsidiaries of Northern Pacific and Great Northern Railways)



## PORTLAND - REDMOND - BEND TRAINS

Read Down		Read Up	
Ele-va-tion	No. 103 Daily	Miles from Port'd	No. 102 Daily
3618	8.00	Lv Bend	6.30
3572	f 8.18	Lv Deschutes	f 6.05
2983	8.50	Redmond	5.45
2918	f 8.58	Prineville Jct.	f 5.20
2863	f 9.05	Terrebonne	f 5.15
2850	f 9.25	Opal City	f 5.01
2624	9.43	Culver	4.48
2517	9.55	Metolius	4.40
2458	10.10	Madras	4.30
2169	f 10.26	Paxton	f 4.04
1787	10.41	Gateway	3.48
1254	f 11.03	South Jct.	f 3.26
1203	f 11.18	Kaskela	f 3.15
1102	f 11.31	Davidson	f 3.05
1074	f 11.36	Dant	f 3.01
1012	f 11.51	Frieda	f 2.49
960	f 12.01	Nena	f 2.41
852	12.27	Maupin	2.23
788	f 12.36	Tuskan	f 2.15
783	f 12.44	Sherar	f 2.09
606	f 1.10	Oakbrook	1.53
510	f 1.34	Sinamox	1.34
508	f 1.50	Dike	1.25
354	f 2.09	Lockit	1.24
328	f 2.25	Kloan	1.17
286	f 2.40	Moody	1.11
166	3.00	Ar Wishram	12.30

### EQUIPMENT BETWEEN PORTLAND and BEND

Trains Nos. 4-102 and 103-3 (N.A.C.). Coaches daily between Portland and Wishram and Wishram and Bend, A.C. observation cars daily between Portland and Wishram, See pages 2, 3 and 4.

## LYLE - KLICKITAT - GOLDENDALE TRAINS

No. 120 Daily ex. Sat.	Miles	S. P. & S. Ry.	Ele-va-tion	No. 121 Daily ex. Sat.
11.55	85.3	Lv Lyle	101	8.40
f 12.20	91.7	Wrights	288	f 8.20
f 12.35	95.6	Pitt	370	f 8.08
12.45	97.7	Lv Klickitat	440	7.58
f 1.00	102.2	Wahkiakus	500	f 7.47
f 1.55	115.5	Warwick	1546	f 7.06
2.15	120.6	Centerville	1586	6.50
2.40	126.9	Ar Goldendale	1610	6.30

Ex. Sat.—Daily except Saturdays. Ex. Sun.—Daily except Sundays.

## PACIFIC TRAILWAYS PORTLAND - BEND

Read Down				Read Up			
Run 6	Run 4	Run 14	Run 2	Run 1	Run 3	Run 5	Run 13
12.31	6.30	2.15	7.15	Lv PORTLAND	12.15	6.30	11.40
3.45	9.35	5.25	10.30	Ar Maupin	9.00	3.15	8.25
5.10	11.10	7.20	12.05	Ar Madras	7.30	1.45	6.55
		7.31	12.16	Ar Metolius	7.20	1.34	6.45
		7.40	12.25	Ar Culver	7.12	1.26	6.37
6.20	11.53	8.11	12.57	Ar Redmond	6.45	1.00	6.10
6.50	12.20	8.40	1.30	Ar BEND	6.15	12.30	5.40

Rail tickets routed via OT—S. P. & S. Railways from or to Central Oregon points will be honored to or from Portland, Oregon by the Mt. Hood Stages (Pacific Trailways). Ask agent for details.

### FREIGHT SERVICE

Route your freight shipments via the Spokane, Portland and Seattle Railway for fast and dependable service—between Portland, Astoria, Spokane, Yakima, Walla Walla, Pendleton, Lewiston, Bend and all points east and south.

Let Us Handle Your Transportation Problems

Light face figures denotes A.M. time. Bold face figures denotes P.M. time. Ar. Arrive. Lv. Leave. f Stop on Signal. t Telegraph office.

## PORTLAND - ST. HELENS RAINIER-ASTORIA-CLATSOP BEACH TRAINS

Westbound—Read Down		Eastbound—Read Up	
No. 21 Daily	Miles	S. P. & S. Ry. Pacific Time	No. 22 Daily
8.10	0.0	Lv. PORTLAND, Union Sta. t Ar	6.50
f 8.26	7.3	Linnton	f 6.30
8.49	19.9	Seapooose	6.08
f 8.56	24.3	Warren	f 6.00
9.04	27.6	ST. HELENS (Station) t	5.54
f 9.09	30.0	Columbia City	f 5.46
f 9.14	33.2	Deer Island	f 5.41
f 9.25	39.4	Goble	f 5.31
f 9.30	41.9	Prescott	f 5.26
9.40	45.8	Ar RAINIER	5.20
10.35		Ar Longview	4.00
8.00		Lv By Direct Bus 30c	6.40
9.40	45.8	Lv RAINIER	5.20
10.02	55.8	Ar Mayger	f 4.59
f 10.06	58.0	Locoda	f 4.55
10.09	59.3	Quincy	f 4.53
10.18	62.2	CLATSOP	4.47
f 10.28	66.6	Marshland	f 4.37
f 10.30	68.5	Woodson	f 4.35
10.39	71.2	Westport	4.29
10.44	73.5	Waua	4.24
f 10.51	76.8	Bradwood	f 4.18
f 10.56	78.4	Clifton	f 4.14
f 11.05	83.3	Brownmead	f 4.05
f 11.10	84.9	Blind Slough	f 4.01
f 11.14	86.5	Knappa	f 3.58
f 11.19	88.5	Ivy	f 3.55
f 11.22	90.2	Svensen	f 3.50
11.55	99.7	Lv ASTORIA	3.30
f 11.56	100.3	11th Street, Ast	









# SPOKANE, PORTLAND AND SEATTLE RAILWAY SYSTEM

S. P. & S. RY.—OREGON TRUNK RY.—OREGON ELECTRIC RY.—(Subsidiaries of Northern Pacific and Great Northern Railways)



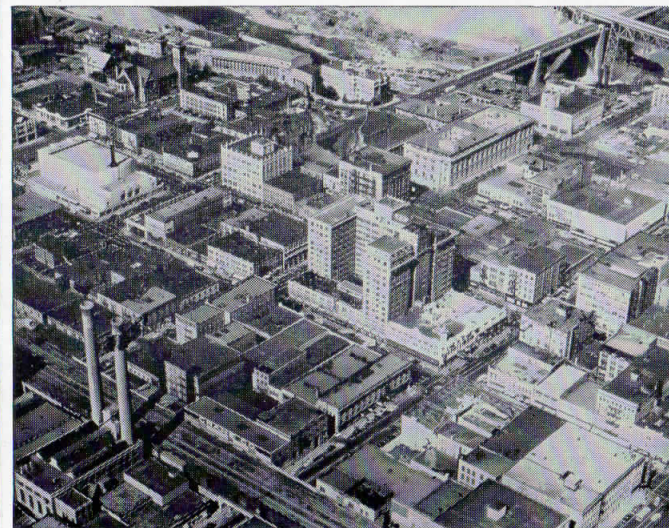
"Mt. Hood, Oregon" seen from S. P. & S. Railway Co. trains.



Portland—the Rose City



**Vital Link Between  
SPOKANE, PORTLAND & CALIFORNIA  
Portland, Pasco, Spokane and East**



Spokane—Queen City of the Inland Empire



28 passengers can be accommodated in the coach section of the new buffet-lounge coach and 48 passengers in the other post-war coaches now in service on the S. P. & S.-N. P. Streamlined North Coast Limited. These are the comfortable "Sleepy Hollow" seats with leg rest for reclining position.



# SPOKANE, PORTLAND AND SEATTLE RAILWAY SYSTEM

S. P. & S. RY.—OREGON TRUNK RY.—OREGON ELECTRIC RY.—(Subsidiaries of Northern Pacific and Great Northern Railways)

For the convenience of our patrons, the Spokane, Portland and Seattle Railway Company, in conjunction with other leading railroads, offers three additional travel services as follows:

## RAIL TRAVEL CREDIT CARD PLAN

Travelers using this plan carry just one card, issued by the Rail Travel Credit Agency. Ticket offices of all participating railroads will honor these cards for any travel originating on their lines—for rail, parlor or sleeping car tickets, meal service in dining cars, as well as for baggage charges.

Any company or individual with proper credit rating can use this plan. No deposit, no service charge.

*For further information, write*

E. B. Padrick, Chairman

**RAIL TRAVEL CREDIT AGENCY**

Room 436 Union Station  
Chicago 6, Illinois

or

H. W. SHIELDS

*General Passenger Agent*

S. P. & S. RY. CO.

## RAIL-TRAVEL-LOAN-SERVICE

Under this plan, the passenger makes application to ticket agent for transportation desired, filling in information called for on blank provided. If same is approved tickets will be furnished at once and payments made as per contract at nominal interest rate.

## "DRIVURSELF" RAIL-AUTO SERVICE

Enjoy the restfulness of train travel to your destination where you may secure a new automobile for your personal use as long as you wish. Try this plan for business or pleasure trips.

Ask agent or representative for further details on any of the above arrangements.

## SHIP and TRAVEL BY TRAIN



"Columbia River" near Wishram, Washington on line of S. P. & S. Railway.



A leg rest adds to the travel ease of coach passengers on the Empire Builder, new S. P. & S.-G. N. streamlined train.





# SPOKANE, PORTLAND AND SEATTLE RAILWAY SYSTEM

S. P. & S. RY.—OREGON TRUNK RY.—OREGON ELECTRIC RY.—(Subsidiaries of Great Northern and Northern Pacific Railways)

## GENERAL INFORMATION

**NOTE**—This folder has been compiled with care, but may contain errors. Furthermore, it is sometimes necessary to change schedules without notice, trains shown are sometimes unavoidably delayed and connections missed. We hope none of our patrons will be inconvenienced by any of these causes, but the Railway Company will not be liable therefor.

**ADJUSTMENT OF FARES.** In cases of dispute with conductors or agents, passengers should pay fare required, take receipt and communicate with Auditor Revenue Accounts, S. P. & S. Ry., Box 571, Portland 7, Ore.

**REDEMPTION OF TICKETS.** Wholly unused tickets will be redeemed by selling agent. Unused or partly used tickets will be redeemed under tariff regulations on application to Auditor Revenue Accounts.

**USE TICKETS WITHIN LIMIT.** Passengers must reach destination not later than midnight of date punched in margin of tickets, or otherwise indicated. One-way tickets will be honored for passage within 30 days, round-trip tickets 3 months, in addition to date of sale.

**FEDERAL TAX.** Fares quoted in this folder do not include 15% Federal tax.

**STOPOVERS** will be allowed at all stations within limit, on application to Conductor.

**CHILDREN'S FARES.** Children under five years of age, when accompanied by parent or guardian, will be carried free of charge. Children five years of age and under twelve years of age will be charged one-half of the adult fares. Children of five and under twelve years of age who are not mature enough to take care of themselves when traveling alone must not be ticketed unless accompanied by parent or guardian. Children twelve years of age and over will be charged the adult fare.

**MARK YOUR BAGGAGE.** All baggage should show name and permanent address of owner. Appropriate gummed labels may be secured from Ticket or Baggage Agent.

**HAND BAGGAGE** in Pullmans is restricted to what can be conveniently placed in berth or at seat occupied by passenger.

**BAGGAGE MAXIMUMS.** Ordinarily 150 lbs. is free allowance for each adult ticket. No single piece of baggage exceeding 300 pounds in weight, or 72 inches in greatest dimension, or exceeding \$2500.00 in value will be checked. Free allowances are subject to tariff stipulation as to contents, weight, value and size.

**BAGGAGE INSURANCE.** A charge of only fifteen cents is made for each hundred dollars value declared above \$100 for baggage checked for each adult passenger and above \$50 for each half-fare ticket. The maximum baggage valuation which may be insured on a single ticket is \$2500.

**LIMITED LIABILITY.** Excess value of baggage must be declared and paid for at time of checking.

**BICYCLES** (not motorcycles), baby carriages, dogs and guns are carried in baggage cars subject to tariff regulations.

**LOST ARTICLES** should be inquired for at the Baggage Office, Union Station, Portland, Oregon, or S. P. & S. Station, Spokane, Wash.

**RESPONSIBILITY.** No responsibility is assumed for unchecked articles left in stations or cars.

## GENERAL OFFICES

**EXECUTIVE, TRAFFIC AND PURCHASING DEPARTMENTS**  
American Bank Building, 621 S. W. Morrison Street  
**ACCOUNTING AND OPERATING DEPARTMENTS**  
N. W. Eleventh Avenue and N. W. Hoyt Streets  
**PORTLAND, OREGON**

- C. E. DENNEY..... President..... St. Paul 1, Minn.
- F. J. GAVIN..... Vice-President..... St. Paul 1, Minn.
- E. B. STANTON..... Vice-President and General Manager..... Portland 7, Oregon
- A. J. HUNT..... Asst. to Vice-Pres. and Gen. Mgr..... Portland 7, Oregon
- J. C. MOORE..... Traffic Manager..... Portland 7, Oregon
- H. W. SHIELDS..... General Passenger Agent..... Portland 7, Oregon
- GEO. F. EHLEN..... General Freight Agent..... Portland 7, Oregon
- KENNETH C. MILLER..... Gen. Industrial and Agricultural Agt..... Portland 7, Oregon
- R. A. LAWRENCE..... Asst. General Industrial Agent..... Portland 7, Oregon
- E. H. BLOCK..... Asst. to the Gen. Frt. Agent..... Portland 7, Oregon
- E. H. SHOWALTER..... Superintendent..... Portland 7, Oregon
- C. F. THOMAS..... Secretary and Chief Engineer..... Portland 7, Oregon
- T. L. PADDEN..... Treasurer..... Portland 7, Oregon
- G. R. WILLIAMS..... Purchasing Agent..... Portland 7, Oregon
- L. W. ALBERTSON..... Comptroller..... Portland 7, Oregon
- H. L. KENDALL..... Auditor Disbursements..... Portland 7, Oregon
- E. C. MICHELSEN..... Auditor Revenue Accounts..... Portland 7, Oregon
- C. E. BREIDER..... Auditor Miscel. Accounts..... Portland 7, Oregon
- W. J. SHEEHAN..... Gen'l. Claim Agent..... Portland 7, Oregon
- W. P. GARRETT..... Right of Way and Tax Agent..... Portland 7, Oregon
- W. T. COWAN..... Superintendent Dining Cars..... Portland 7, Oregon

- Representatives**
- ALBANY, ORE..... WM. BODNO..... (Phone M. 291) Agt., O. E. Ry. Sta.
  - ASTORIA, ORE..... R. C. BAKER 20th and Commercial (Phone 113) Agent
  - BEND, ORE..... ALBERT ALLEN (Phone 454) Agt. Passenger Sta.
  - EUGENE, ORE..... G. A. SILK WORTH (Phone 438) Trav. Frt. & Pass. Agt.
  - HILLSBORO, ORE..... S. A. SEXSMITH (Phone 107) Agt., O. E. Ry. Sta.
  - JUNCTION CITY, ORE..... W. Z. MYERS..... General Agent
  - LOS ANGELES 14, CALIF..... J. H. TAYLOR..... Traveling Frt. & Pass. Agent
  - LOS ANGELES 14, CALIF..... L. SHERMAN..... (Ph. 1944) Agt., O. E. Ry. Frt. Depot
  - LOS ANGELES 14, CALIF..... L. W. MALLORY (Ph. M. 382) Agt., O. E. Ry. Frt. Depot

- Great Northern Railway 1016-17 Associated Realty Bldg., Phone Vandike 1201
- S. L. WILLIAMS..... District Passenger Agent
- G. M. FRENCH..... Trav. Pass. Agent
- Northern Pacific Railway, 519 Associated Realty Bldg., Phone Trinity 2321
- D. F. WALKER..... General Agent
- J. E. BEATTY..... District Pass. Agent

- OAKLAND 12, CALIF..... G. R. LALLY..... Gen. Agt., Gt. Nor. Ry.
- C. G. ALEXANDER..... Dist. Pass. Agt.
- 611-612 Central Bk. Bldg., Ph. Templebar 2-7672; 2-7673
- J. C. SPRACKLIN, Gen. Agt., Nor. Pac. Ry., 815 Central Bank Building, Phone Glencourt 1-8717.

- PORTLAND 7, ORE..... W. H. DYER..... City Pass. Agent
- A. C. STICKLEY..... GAPD (SP&S - NP. Rys.)
- 439 S.W. 6th Avenue, Telephone Capitol 1311
- A. W. GUSEY..... GAPD (SP&S - GN. Rys.)
- 607 S.W. Washington Street Telephone BE. 7273
- J. L. MILLER, Ticket Agent, Union Station, Foot of N. W. 6th Avenue, Telephone Broadway 3421.

- 1101 American Bank Building Phone ATwater 9111
- C. J. LIVINGSTON..... District Passenger Agent
- H. K. HALLGREN..... Traffic Representative
- R. W. WEST..... General Agent, Freight Dept.
- F. J. HARRIS..... Trav. Freight and Pass. Agent
- T. J. MARTIN..... City Freight Agent
- HAROLD F. ERZ..... City Freight Agent
- P. H. BRINGMANN, Local Freight Agent, N. W. 11th and Hoyt, Phone ATwater 9111

- REDMOND, ORE..... R. L. HOUGH..... (Phone 13) Agt., Passenger Station
- SACRAMENTO 14, CALIF..... T. L. MAY, Gen. Agt., Gt. Nor. Ry., 223 Forum Bldg.
- ST. HELENS, ORE..... J. L. MCGRAW (Phone 658) Agt., S.P.&S. Station
- SALEM, ORE..... J. B. HENSHAW (Phone 4763) Agt., O.E.Ry.Frt.Depot
- SAN FRANCISCO 5, CALIF..... Northern Pacific Railway, 657 Market St. Phone Sutter 1-1078.

- DANIEL TINNEY..... General Agent
- R. L. PREFONTAINE..... City Pass. Agt.
- Great Northern Railway, 679 Market Street, Phone Sutter 1-6051; 1-6052.
- A. L. SCOTT..... General Agent, Passenger Dept.
- R. W. GREENMAN..... City Passenger Agent

- SEASIDE, ORE..... A. W. CANNON (Phone 45), Agent, S.P.&S. Ry. Sta.
- SPOKANE 8, WASH..... R. E. HENDERSHOTT..... General Agent
- D. W. MORRISON, City Frt. and Pass. Agt.
- 925 Old National Bank Building, Phone Main 4238.
- R. C. MURPHY, General Agent, Passenger Dept.
- Davenport Hotel, Phone Main 5141.
- E. F. BAIRD, City Passenger and Ticket Agt., Sprague Ave. and Wall St. Phone Main 5321.

- H. W. GREEN..... Ticket Agent, Gt. Nor. Ry. Sta.
- VANCOUVER, WASH..... J. CONDRA..... Agt. (Phone 2881), S.P.&S. Ry. Sta.
- R. I. THOMPSON (Phone 735)..... Passenger Station

Agents of the Great Northern and Northern Pacific Railways throughout the United States are the direct representatives of the Spokane, Portland and Seattle Railway Company, Oregon Trunk Railway and Oregon Electric Railway Company.

