

Bonneville Dam, adjacent to North Bonneville, Washington, 49 miles east of Portland, Oregon on the main line of the Spokane, Portland and Seattle Railway.

This dam, which is one of the government's greatest power-navigation projects, was built at a cost exceeding \$81,386,000.00. A wonderful view of this great work of engineering and the surrounding mountains ranging in altitude from 2,000 to 5,000 feet, may be seen from the trains of the S. P. & S. Railway.



**THROUGH SERVICE
VIA**

NORTH COAST
LIMITED



EMPIRE
BUILDER



TIME TABLES

OCTOBER 10, 1947

Subject to change without notice

**TRAVEL THE
COLUMBIA RIVER
SCENIC ROUTE
THROUGH THE
CASCADE RANGE**



**THROUGH SERVICE
VIA**

NORTH COAST
LIMITED



EMPIRE
BUILDER



TIME TABLES

OCTOBER 10, 1947

Subject to change without notice

**TRAVEL THE
COLUMBIA RIVER
SCENIC ROUTE
THROUGH THE
CASCADE RANGE**



SPOKANE, PORTLAND AND SEATTLE RAILWAY SYSTEM

S. P. & S. RY.—OREGON TRUNK RY.—OREGON ELECTRIC RY.—(Subsidiaries of Northern Pacific and Great Northern Railways)

TRANSCONTINENTAL TRAIN SERVICE—BETWEEN PORTLAND, PASCO AND EAST

SPOKANE, PORTLAND AND SEATTLE, NORTHERN PACIFIC AND CHICAGO, BURLINGTON AND QUINCY RAILWAYS

Eastbound, Read Down

Westbound, Read Up

Table of train schedules for Spokane, Portland and Seattle, Northern Pacific and Chicago, Burlington and Quincy railways. Includes columns for train numbers, arrival/departure times, and routes like Northern Pacific Ry. and Burlington Route.

Key for train services: x Bus, z Motor, A During park season, * Daily except Sunday by bus, c Connects with No. 3 at Minneapolis, † Central Time, ‡ Mountain Time, • N.P. Train 5 Lv. Spokane 7:00 a.m., Ar. Pasco 10:30 a.m.

EQUIPMENT

S. P. & S. 3-4, N. P. 1-2—NORTH COAST LIMITED BETWEEN PORTLAND AND CHICAGO VIA S. P. & S.-N. P.-C. B. & Q.

Completely air conditioned. Buffet Lounge Car: Portland-Chicago. Standard Sleeping Car: Portland-Chicago: 10 section, 1 compartment, 1 drawing room (P-40 Eastbound, B-19 Westbound). Tourist Sleeping Car: Portland-Chicago, 14 section (PN Eastbound, BR Westbound). Luxury Day-Nite Chair Car (chair car chaise lounge seats with leg rests for reclining full length; seats not reserved). Buffet and Dining Car Service: Portland-Chicago. (New streamlined diner—lunch car, with dining section and lunch counter, Pasco-Chicago.) DeLuxe Reclining Chair Car (seats not reserved): Portland-Spokane.

N. P. 3-4—ALASKAN (air conditioned)

Standard Sleeping Car: Spokane-St. Paul: 10 section, 1 compartment, 1 drawing room (Car No. 8 Eastbound, No. 9 Westbound).

Cafe Car and Reclining Seat Coach: Pasco-St. Paul.

S. P. & S. No. 5-6, N. P. No. 4-5—COLUMBIA RIVER EXPRESS—ALASKAN

Between Portland, Pasco and Spokane. Reserved seat buffet coach (a.c.) & coaches, Portland-Pasco. Reserved seat coach, Cafe car and deluxe coaches (a.c.), Pasco and Spokane. Seats must be reserved in advance. Seat 50c plus tax, Portland to Spokane.

A TRANS-CONTINENTAL SYSTEM OF RAILWAYS THROUGH AMERICA'S WONDERLAND

Traversing the northern states between the Pacific Northwest and Chicago presents a veritable wonderland offering passengers a splendid variety of ever-changing scenery.

Over these lines, between Portland, Pasco, Spokane, Minneapolis, St. Paul and Chicago, are run two of America's finest trains (the North Coast Limited and the Alaskan), providing passengers every feature of modern railway travel for their comfort, pleasure and economy.



SPOKANE, PORTLAND AND SEATTLE RAILWAY SYSTEM

S. P. & S. RY.—OREGON TRUNK RY.—OREGON ELECTRIC RY.—(Subsidiaries of Northern Pacific and Great Northern Railways)

TRANSCONTINENTAL TRAIN SERVICE—BETWEEN PORTLAND, SPOKANE AND EAST

VIA SPOKANE, PORTLAND AND SEATTLE, GREAT NORTHERN AND CHICAGO, BURLINGTON & QUINCY RAILWAYS

Detailed table of train schedules between Portland, Spokane and East. Columns include train numbers (No. 6, 4, 2, 1, 3, 5-5), routes (Spokane, Portland and Seattle Railway, Great Northern Ry., Burlington Route), and arrival/departure times.

Stops to discharge passengers from Portland. † Except Sunday. * Central time. q Daily except Monday. ‡ Mountain time.

G. N. No. 2—Stops at Cut Bank to discharge revenue passengers from Spokane and West and pickup passengers for Williston and East. a—To discharge revenue passengers from Spokane and West and pick up for Minot and East. G. N. No. 1—Stops at Cut Bank to discharge revenue passengers from Williston and East and to pick up passengers for Spokane and West. a—To discharge revenue passengers from Minot and East and pick up for Spokane and West.

S. P. & S. 1-2, G. N. 1-2, STREAMLINED EMPIRE BUILDER Between PORTLAND and CHICAGO Via S. P. & S., G. N., C. B. & Q.

Completely air conditioned. No extra fare. Radio.

Observation-Lounge-Cafe Car: Portland-Spokane.

Observation-Lounge-Sleeping Car:

Spokane-Chicago: 2 double bedrooms, 1 drawing room, (29 Eastbound, 19 Westbound).

Standard Sleeping Car:

Portland-Chicago: 8 duplex roomettes, 4 double bedrooms, 4 sections (P-28 Eastbound, P-18 Westbound).

Day-Nite Coach:

Portland-Chicago: 48 reserved seats, reserved in advance, no extra cost. (P-202 Eastbound, P-102 Westbound).

Deluxe Chair Car:

Portland-Spokane: 60 reclining seats not reserved.

Buffet Dining Car Service

Portland-Spokane-Chicago.

Note: The following reduced fare tickets will not be honored on the new Empire Builder: Clergy, Charity, Employee, D.V.S., V.A.H., Blind and Attendant, Blind and Guide Dog, Furlough, Dischargee, Circus, Show, Banana Messengers, Drover's or Caretaker's and Live Stock Contracts.

S. P. & S. 3-4, G. N. 3-4, THE ORIENTAL LIMITED

All regularly assigned equipment is air conditioned. All classes of tickets honored.

Standard Sleeping Car

Portland-Chicago: 8 sections, 2 compartments, 1 drawing room (Car P-6 Eastbound, Car B-6 Westbound). This car in service June 18 to October 1 only.

Observation-Buffet-Lounge:

Portland-Spokane-Chicago: 8 sections (Car 10 Eastbound, Car 10 Westbound).

Standard Sleeping Cars, Observation Club Cars:

Portland-Spokane, Spokane-Chicago. Radio.

Tourist Sleeping Car:

Portland-Chicago: 16 section (P-J Eastbound, B-J Westbound).

Deluxe Reclining Chair Cars (seats not reserved):

Portland-Spokane-Chicago.

Buffet-Dining Car Service:

Portland-Spokane-Chicago.

A TRANS-CONTINENTAL SYSTEM OF RAILWAYS THROUGH AMERICA'S WONDERLAND

Traversing the northern states between the Pacific Northwest and Chicago presents a veritable wonderland offering passengers a splendid variety of ever-changing scenery.

Over these lines, between Portland, Spokane, Minneapolis, St. Paul and Chicago, are run two of America's finest trains (the Empire Builder and the Oriental Limited), providing passengers every feature of modern railway travel for their comfort, pleasure and economy.



SPOKANE, PORTLAND AND SEATTLE RAILWAY SYSTEM

S. P. & S. RY.—OREGON TRUNK RY.—OREGON ELECTRIC RY.—(Subsidiaries of Great Northern and Northern Pacific Railways)

PORTLAND - WISHRAM - PASCO - SPOKANE TRAINS

Table with columns for No. 4 Daily, No. 6 Daily, No. 2 Daily, Elva., Miles, Spokane, Portland and Seattle Railway, No. 1 Daily, No. 5 Daily, No. 3 Daily, No. 3 Daily, SPECIAL STOPS, and various train numbers and times.

FOR EQUIPMENT—BETWEEN PORTLAND, PASCO AND SPOKANE—SEE PRECEDING PAGE 2.



S. P. & S. RAILWAY BRIDGE ACROSS WILLAMETTE RIVER, PORTLAND, OREGON

Light face figures denote A. M. time. Bold face figures denote P. M. time. Ar. Arrive. Lv. Leave. / Stop on signal.



SPOKANE, PORTLAND AND SEATTLE RAILWAY SYSTEM

S. P. & S. RY.—OREGON TRUNK RY.—OREGON ELECTRIC RY.—(Subsidiaries of Northern Pacific and Great Northern Railways)

PORTLAND - REDMOND - BEND TRAINS

Table with columns for No. 4 Daily, Miles, Spokane, Portland and Seattle Railway, Elva-tion, No. 3 Daily, No. 102 Daily, and No. 103 Daily, listing train routes and times.

PORTLAND - ST. HELENS

Table with columns for No. 21 Daily, Miles, S. P. & S. RY. Pacific Time, No. 22 Daily, and RAINIER-ASTORIA-CLATSOP BEACH TRAINS, listing train routes and times.

ONLY FREIGHT SERVICE is operated on the following Branches of the Spokane, Portland and Seattle Railway and the Oregon Electric Railway.

Table listing freight service branches: KEASLEY BRANCH, GLENWOOD BRANCH, PORT STEVENS BRANCH, and Oregon Electric Railway.

EQUIPMENT BETWEEN PORTLAND AND BEND

Trains Nos. 4-102 and 103-3 (N.A.C.). Coaches daily between Portland and Wishram and Bend, A.C. observation cars daily between Portland and Wishram, See pages 2 and 3.

CONNECTION AT BEND FOR KLAMATH FALLS

See schedule of Great Northern Railway on page 6.

LYLE - KLICKITAT - GOLDENDALE TRAINS

Table with columns for No. 120 Daily ex. Sat., Miles, S. P. & S. Ry., Elva-tion, No. 121 Daily ex. Sat., and Lyle, Klickitat, Goldendale trains.

Ex. Sat.—Daily except Saturdays. Ex. Sun.—Daily except Sundays.

RESPONSIBILITY

Not Responsible—The Spokane, Portland and Seattle Railway Company is not responsible for errors in time tables, inconvenience or damage resulting from delayed trains or failure to make connections; schedules herein are subject to change without notice.

PACIFIC TRAILWAYS (Mt. Hood Stages, Inc.) (7-25-47)

Table with columns for 6, 4, 14, 2, 1, 3, 5, 13, listing train routes and times.

FREIGHT SERVICE

Route your freight shipments via the Spokane, Portland and Seattle Railway for fast and dependable service—between Portland, Astoria, Spokane, Yakima, Walla Walla, Pendleton, Lewiston, Bend and all points east and south.

Let Us Handle Your Transportation Problems

Light face figures denotes A.M. time. Bold face figures denotes P.M. time. Ar. Arrive. Lv. Leave. / Stop on Signal. t Telegraph office.

SHIP BY RAIL

SAFETY FIRST—friendliness too!



CLATSOP BEACH SEASIDE—GEARHART PACIFIC OCEAN

ALL-YEAR SEASHORE RESORT

Surrounded by evergreen forests and a background of mountains, Clatsop Beach has every facility for visitors—golf courses, fishing, amusement places, sea foods, pure water, good hotels, restaurants, cottages, and camps. Along the expanding Columbia River, from Portland to Astoria. Train schedules above.



SPOKANE, PORTLAND AND SEATTLE RAILWAY SYSTEM

CONNECTIONS AT PORTLAND

S. P. & S. RY.—OREGON TRUNK RY.—OREGON ELECTRIC RY.—(Subsidiaries of Great Northern and Northern Pacific Railways)

PORTLAND - PUGET SOUND - BRITISH COLUMBIA

NORTHERN PAC. RY. - GREAT NORTHERN RY. - UNION PAC. R. R.

Table with columns for Northbound-Read Down and Southbound-Read Up, listing train numbers, dates, and fares for routes like Portland to Vancouver, Kelso-Longview, and Seattle.

† Daily except Sunday. a Bus daily. b To and from Olympia by bus. k King Street Station. p Stops from Spokane and beyond. u Union Sta.

CONNECTIONS AT SPOKANE AND PASCO

Table showing bus and train connections between Spokane and Pasco, including routes to Portland, Vancouver, and Seattle.

Table for Northern Pacific routes, including connections to Walla Walla, Pocatello, and other regional stations.

Table for Great Northern Ry. routes, including connections to Bend, Klamath Falls, and Bieber.

Table for Northern Pacific routes, including connections to Portland, Spokane, and other regional stations.

Light face figures denote A.M. time. Bold face figures denote P.M. time. Ar. Arrive. Lv. Leave. f Stop on Signal.

SOUTHERN PACIFIC COMPANY

Southbound—Read Down Northbound—Read Up

Table showing train schedules and fares for Southern Pacific routes between Portland and San Francisco, including Cascade, Beaver, and Klamath Falls.

b—By Bus. c—Except Sun. & Hol. On Sun. & Hol. ar. Oak. 16th St. 10.17 Oak. pier 10.25 San Francisco 10.50

EQUIPMENT OF TRAINS

Train 11-12. Cascade.—(Air Conditioned). Between Portland and San Francisco. Standard sleeping cars with sections, drawing rooms, compartments, bedrooms. Lounge and dining car. First class tickets required.

SAN FRANCISCO—LOS ANGELES—COAST LINE

Table showing train schedules and fares for the San Francisco-Los Angeles-Coast Line.

SAN FRANCISCO—LOS ANGELES—VALLEY LINE

Table showing train schedules and fares for the San Francisco-Los Angeles-Valley Line.

UNION PACIFIC RAILROAD

Table showing train schedules and fares for Union Pacific routes between Portland and Denver.

SPOKANE, PORTLAND AND SEATTLE RAILWAY SYSTEM

S. P. & S. RY.—OREGON TRUNK RY.—OREGON ELECTRIC RY.—(Subsidiaries of Northern Pacific and Great Northern Railways)



Sleeping, Parlor Car and Reserved Seat Fares

Federal Tax Extra

For information only. Subject to change without notice.

Large table showing fares for various routes between Portland, Spokane, and other cities, including rates for sleeping cars, parlor cars, and reserved seats.

RATES FOR UPPER BERTH, DUPLEX ROOMETTE, BEDROOM, COMPARTMENT AND DRAWING ROOM IN STANDARD SLEEPING CARS

Table showing rates for different types of sleeping car accommodations, including upper berths, duplex roomettes, bedrooms, compartments, and drawing rooms.

INDUSTRIAL LOCATIONS

Served by the SP&S RAILWAY SYSTEM in Oregon and Washington are many excellent industrial and warehouse sites for those seeking new locations. Abundant raw materials are available for many types of manufacturing and processing. Ocean going ships dock at many locations for a distance of 100 miles along the Columbia and Willamette rivers which are paralleled by rails of the SP&S Railway System.

Contact our Industrial Department for information covering your requirements.

KENNETH C. MILLER
General Industrial and Agricultural Agent
American Bank Building
Portland 7, Oregon

Through sleeping cars not operated in all trains; fare applies for continuous trip via direct connections. A compartment is a private room with lower and upper berths and toilet; a drawing room has a divan berth in addition.

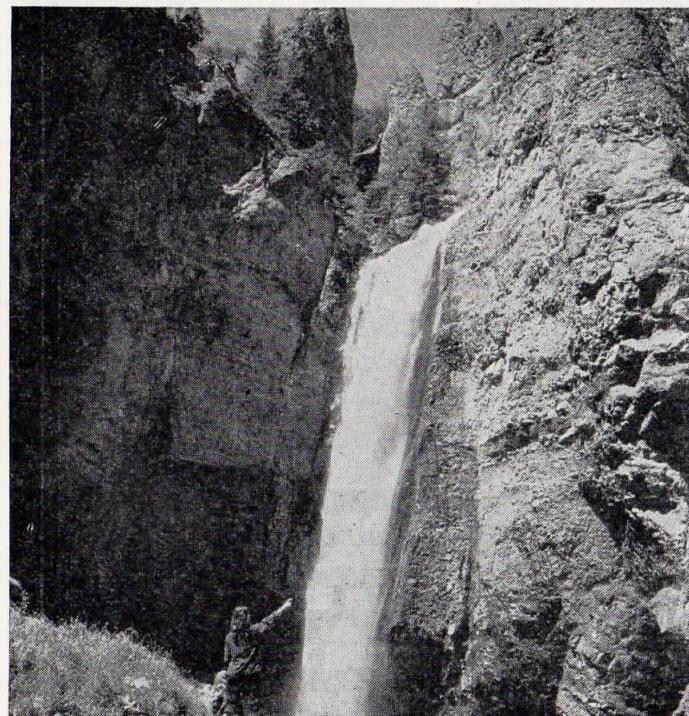
Exclusive occupancy of a drawing room requires 1 1/2 adult rail tickets, or their equivalent; for compartment, duplex-roomette, single or double bedroom, one such ticket between S. P. & S.-N. P.-G. N. and connections; 1-1/10 tickets between certain other lines; for section, one such ticket for each berth.

BAGGAGE IN SLEEPING CARS.—Hand baggage in sleeping cars is restricted to what may conveniently be placed in berth or at seat occupied by passengers. All baggage should be marked with name and permanent address of owner. Ask ticket or baggage agent for address pasteur.



SPOKANE, PORTLAND AND SEATTLE RAILWAY SYSTEM

S. P. & S. RY.—OREGON TRUNK RY.—OREGON ELECTRIC RY.—(Subsidiaries of Northern Pacific and Great Northern Railways)



Tower Falls, near the lower end of the Grand Canyon, drop from a spectacular group of rocky needles. Yellowstone National Park.—Northern Pacific Railway.



28 passengers can be accommodated in the coach section of the new buffet-lounge coach and 48 passengers in the other post-war coaches now in service on the North Coast Limited. These are the comfortable "Sleepy Hollow" seats with leg rest for reclining position.—Northern Pacific Railway.

Protect Your Luggage

Ask for Identification Label at Ticket Offices or Baggage Counters and paste in or outside your baggage.

Help us help you in locating your baggage if it becomes misplaced.

WESTERN UNION TELEGRAMS

may be sent from any telegraph station. Domestic Service: Full Rate Telegrams (fast service at reasonable rates). Day letters (inexpensive deferred service). Night letters (overnight service at reduced rates). The porter will send your telegram or cablegram from the next Western Union Station.

THE WESTERN UNION TELEGRAPH COMPANY HANDLES MESSAGES AT PUBLIC TELEGRAPH OFFICES ON THIS RAILROAD

SHIP and TRAVEL BY TRAIN



SEND YOUR SHIPMENTS

THE RAILROAD WAY!

Railway Express moves swiftly on America's finest trains. For prompt, efficient shipping service, specify "Via Railway Express!"

RAILWAY EXPRESS
AGENCY INC.
NATION-WIDE SERVICE



SPOKANE, PORTLAND AND SEATTLE RAILWAY SYSTEM

S. P. & S. RY.—OREGON TRUNK RY.—OREGON ELECTRIC RY.—(Subsidiaries of Northern Pacific and Great Northern Railways)



A leg rest adds to the travel ease of coach passengers on the Empire Builder, new Great Northern streamlined train.—Great Northern Railway.



Upper end of St. Mary's Lake, Glacier National Park.—Great Northern Railway.

For the convenience of our patrons, the Spokane, Portland and Seattle Railway Company, in conjunction with other leading railroads, now offers three additional travel services as follows:

RAIL TRAVEL CREDIT CARD PLAN

Travelers using this plan carry just one card, issued by the Rail Travel Credit Agency. Ticket offices of all participating railroads will honor these cards for any travel originating on their lines—for rail, parlor or sleeping car tickets, meal service in dining cars, as well as for baggage charges.

Any company or individual with proper credit rating can use this plan. No deposit, no service charge.

For further information, write

H. W. SIDDALL, Chairman
RAIL TRAVEL CREDIT AGENCY
Room 436 Union Station
Chicago 6, Illinois

or

H. W. SHIELDS
General Passenger Agent
S. P. & S. RY. CO.

RAIL-TRAVEL-LOAN-SERVICE

Under this plan, the passenger makes application to ticket agent for transportation desired, filling in information called for on blank provided. If same is approved tickets will be furnished at once and payments made as per contract at nominal interest rate.

"DRIVURSELF" RAIL-AUTO SERVICE

Enjoy the restfulness of train travel to your destination where you may secure a new automobile for your personal use as long as you wish. Try this plan for business or pleasure trips.

Ask agent or representative for further details on any of the above arrangements.



SPOKANE, PORTLAND AND SEATTLE RAILWAY SYSTEM

S. P. & S. RY.—OREGON TRUNK RY.—OREGON ELECTRIC RY.—(Subsidiaries of Great Northern and Northern Pacific Railways)



Portland—the Rose City

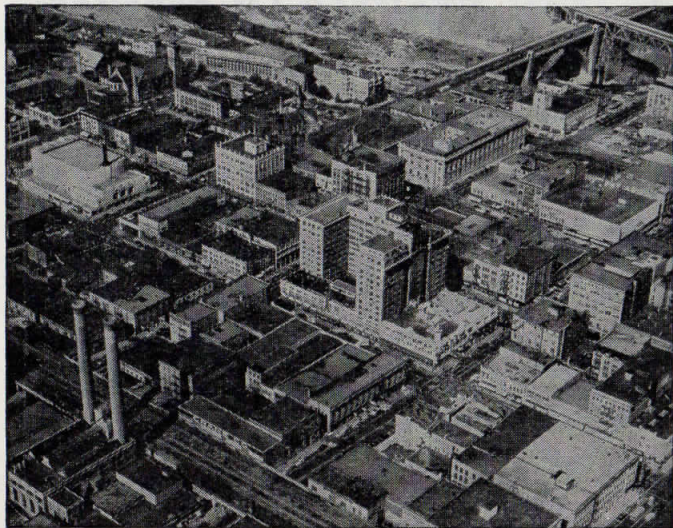


SPOKANE, PORTLAND & SEATTLE RAILWAY CO.

Vital Link Between

SPOKANE, PORTLAND & CALIFORNIA

Portland, Pasco, Spokane and East



Spokane—Queen City of the Inland Empire

GENERAL OFFICES

EXECUTIVE, TRAFFIC AND PURCHASING DEPARTMENTS

American Bank Building, 621 S. W. Morrison Street
ACCOUNTING AND OPERATING DEPARTMENTS
N. W. Eleventh Avenue and N. W. Hoyt Streets
PORTLAND, OREGON

C. E. DENNEY	President	St. Paul 1, Minn.
F. J. GAVIN	Vice-President	St. Paul 1, Minn.
E. B. STANTON	Vice-President and General Manager	Portland 7, Oregon
A. J. HUNT	Asst. to the Gen. Mgr.	Portland 7, Oregon
E. H. SHOWALTER	Superintendent	Portland 7, Oregon
J. C. MOORE	Traffic Manager	Portland 7, Oregon
H. W. SHIELDS	General Passenger Agent	Portland 7, Oregon
GEO. F. EHLEN	General Freight Agent	Portland 7, Oregon
KENNETH C. MILLER	Gen. Industrial and Agricultural Agt.	Portland 7, Oregon
L. S. DAVIS	Asst. to the Gen. Frt. & Pass. Agt.	Portland 7, Oregon
ROBT. CROSSIE	Comptroller	Portland 7, Oregon
L. W. ALBERTSON	Assistant Comptroller	Portland 7, Oregon
C. D. PHILLIPS	Auditor Disbursements	Portland 7, Oregon
E. C. MICHELSEN	Auditor Revenue Accounts	Portland 7, Oregon
C. F. THOMAS	Secretary and Chief Engineer	Portland 7, Oregon
T. L. PADDEN	Treasurer	Portland 7, Oregon
G. E. WILLIAMS	Purchasing Agent	Portland 7, Oregon
W. P. GARRETT	Right of Way and Tax Agent	Portland 7, Oregon

Representatives

ALBANY, ORE.	WM. BODNO	(Phone M. 291)	Agnt., O. E. Ry. Sta.
ASTORIA, ORE.	R. C. BAKER	20th and Commercial (Phone 113)	Agent
	H. W. LINDSAY	City Passenger and Ticket Agent	
BEND, ORE.	ALBERT ALLEN	(Phone 454)	Agent Passenger Sta.
	G. A. SILK WORTH	(Phone 438)	Trav. Frt. & Pass. Agt.
	S. A. SEXSMITH	(Phone 107)	Agent, O. E. Ry. Sta.
EUGENE, ORE.	W. Z. MYERS	Traveling Frt. & Pass. Agt.	
HILLSBORO, ORE.	L. SHERMAN	(Ph. M. 541)	Agnt., O. E. Ry. Frt. Depot
JUNCTION CITY, ORE.	L. W. MALLORY	(Ph. M. 382)	Agnt., O. E. Ry. Frt. Depot
LOS ANGELES 14, CALIF.	Great Northern Railway	918-919 Associated Realty Bldg., Phone Vandike 1201	
	W. E. McCORMICK	General Agent	
	S. I. WILLIAMS	District Passenger Agent	
	G. M. FRENCH	Trav. Pass. Agent	
	D. F. WALKER	General Agent	
	J. E. BEATTY	District Pass. Agent	
	R. A. KOELBLEN, J. D. DRISCOLL, City Frt. & Pass. Agt.		
	J. V. KRISMAN, Traveling Freight & Passenger Agent		
OAKLAND 12, CAL.	G. R. LALLY	Gen. Agt., Gt. Nor. Ry.	
	C. G. ALEXANDER	Dist. Pass. Agt.	
	611-612 Central Bank Bldg., Ph. Templebar 7672-73		
	J. C. SPRACKLIN, Gen. Agt., Nor. Pac. Ry., 815 Central Bank Building, Phone Glencourt 1-8717.		
PORTLAND 7, ORE.	A. F. LEB	General Agent	
	Consolidated Ticket Office, S. W. Broadway and Morrison St. Telephone BRY. 5631.		
	J. L. MILLER, Ticket Agent, Union Station, Foot of N. W. 8th Avenue, Telephone Broadway 3421.		
	R. E. HENDERSHOTT, General Agent		
	R. A. LAWRENCE, Trav. Freight and Pass. Agent		
	F. J. HARRIS, City Freight Agent		
	T. J. MARTIN, City Freight Agent		
	C. J. LIVINGSTON, District Passenger Agent		
	HAROLD F. ERZ, District Representative		
	P. H. BRINGMANN, Local Freight Agent, N. W. 11th and Hoyt, Phone ATwater 9111.		
REDMOND, ORE.	G. W. SEXSMITH	(Phone 13) Agt., Passenger Station	
SACRAMENTO 14, CAL.	T. L. MAY	Gen. Agt., Gt. Nor. Ry., 223 Forum Bldg.	
ST. HELENS, ORE.	J. L. McGRAY	(Phone 58) Agt., S.P.&S. Station	
SALEM, ORE.	J. B. HENSHAW	(Phone 4763) Agt., O.E. Ry. Frt. Depot	
SAN FRANCISCO 5, CAL.	Northern Pacific Railway	657 Market St. Phone Sutter 1-1078.	
	DANIEL TINNEY	General Agent	
	W. CEDERBERG	Trav. Freight and Pass. Agt.	
	W. J. RIDDELL	City Freight and Pass. Agent	
	G. F. HILLMAN	City Freight and Pass. Agent	
	Great Northern Railway	679 Market Street, Phone Sutter 6051-52.	
	A. L. SCOTT	General Agent, Passenger Dept.	
	JOSEPH L. TIERNEY	City Passenger Agent	
SEASIDE, ORE.	A. W. CANNON	(Phone 45), Agent, S.P. & S. Ry. Sta.	
SPOKANE 8, WASH.	J. C. WRIGHT	General Agent	
	J. H. TAYLOR, City Frt. and Pass. Agt.		
	925 Old National Bank Building, Phone Main 4238.		
	R. C. MURPHY, General Agent, Passenger Dept.		
	Davenport Hotel, Phone Main 5141.		
	E. F. BAIRD, City Passenger and Ticket Agt., Sprague Ave. and Wall St. Phone Main 5321.		
	H. W. GREEN	Ticket Agent, Gt. Nor. Ry. Sta.	
VANCOUVER, WASH.	J. CONDRA	Agnt. (Phone 2881), S.P.&S. Ry. Sta.	
	R. I. THOMPSON	(Phone 735) Passenger Station	

Agents of the Great Northern and Northern Pacific Railways are the direct representatives of the Spokane, Portland and Seattle Railway Company, Oregon Trunk Railway and Oregon Electric Railway Company in California, and throughout the United States.

