

STAGE AND BOAT CONNECTIONS

To points in Oregon and Washington reached from stations on the Spokane, Portland and Seattle Ry. east of Portland and on Oregon Trunk Ry.

NOTE: The information shown below is prepared from the best data obtainable and is subject to change without notice and neither service nor rates are guaranteed.

Destination	From	Conveyance	Days	Time	Free Bkg.lbs.
Oregon:					
*Arlington	Roosevelt	Ferry	Daily	8 A.M. to 9 P.M.	Hand
Ashwood	Madras	Stage	Ex. Sun.	8:00 AM	100
Burns	Bend	Stage	Daily	8:00 PM	100
Chiloquin	Bend	Stage	Daily	2:20 PM	100
Crescent	Bend	Stage	Daily	7:20 PM	100
Criterion	Maupin	Stage	Daily	2:20 PM	100
Ft. Klamath	Bend	Stage	Daily	10:55 AM	100
Fort Rock	Bend	Stage	Daily	4:10 PM	100
Grizzly	Bend	Stage	Daily	2:20 PM	100
Hay Creek	Madras	Stage	Ex. Sun.	8:45 AM	100
Klamath Falls	Bend	Stage	Ex. Sun.	8:00 AM	100
Lakeview	Bend	Stage	Daily	2:20 PM	100
La Pine	Bend	Stage	Ex. Sun.	8:45 AM	100
Millican	Bend	Stage	Daily	8:00 PM	100
Mitchell	Redmond	Stage	Sun., Tue., Thu., Sat.	2:05 PM	100
Paisley	Bend	Stage	Ex. Sun.	8:45 AM	100
Prineville	Redmond	Stage	Daily	11:35 AM	100
Riley	Bend	Stage	Ex. Sun.	7:05 PM	100
Silver Lake	Bend	Stage	Ex. Sun.	8:45 AM	100
Summer Lake	Bend	Stage	Ex. Sun.	8:45 AM	100
*The Dalles	Northdales	Ferry	Continuous Service	4:50 PM	100
Tygh Valley	Maupin	Stage	Daily	10:40 AM	100
Wapinitia Jet	Maupin	Stage	Daily	4:55 PM	100
Warm Springs	Madras	Stage	Ex. Sun.	8:00 AM	100
Washington:					
Amboy	Vancouver	Stage	Ex. Sun.	7:30 AM	Hand
			Sun.	4:30 PM	Hand
			Sun.	10:00 AM	Hand
			Sun.	7:00 PM	Hand
Appleton	Lyle	Stage	Ex. Sun.	7:00 AM	Hand
Battle Ground	Vancouver	Stage	Daily	Frequent	Hand
Bickleton	Roosevelt	Stage	Daily	Meets 3 & 4	Hand
Brush Prairie	Vancouver	Stage	Daily	Frequent	Hand
Cheney	So. Cheney	Passengers	make own arrangement		Hand
Gilmer	Bing-Wh Sal	Stage	Ex. Sun.	12:30 PM	Hand
Glenwood	Bing-Wh Sal	Stage	Ex. Sun.	12:30 PM	Hand
Goldendale	Maryhill	Stage meets	No. 4 Daily, ily ex. Sun.		Hand
			Nos. 1 & 3 Daily		Trunks
					50c
Guler	Bing-Wh Sal	Stage	Ex. Sun.	12:30 PM	Hand
Hanford	Kennewick	Stage	Frequent		Hand
Hartland	Lyle	Stage	Tu. Th. Sat	1:30 PM	Hand
Husum	Bing-Wh Sal	Stage	Ex. Sun.	12:30 PM	Hand
LaCenter	Vancouver	Stage	Daily	See Note 1	Hand
Laurel	Bing-Wh Sal	Stage	Ex. Sun.	12:30 PM	Hand
Liberty Bond	Lyle	Stage	Ex. Sun.	7:00 AM	Hand
Longview	Rainier	Stage	Daily	8:20 2:20 10:20 4:20 12:20 6:20 7:40	50
Orochards	Vancouver	Stage	Daily	Frequent	Hand
Richland	Kennewick	Stage	Daily	Frequent	Hand
St. Martin's Springs	Carson	Auto	Daily	Trains 3 & 4	Hand
Snowdon	Bing-Wh Sal	Stage	Ex. Sun.	8:00 AM	Hand
Trout Lake	Bing-Wh Sal	Stage	Ex. Sun.	12:30 PM	Hand
White Bluffs	Kennewick	Stage	Frequent		Hand
Yacolt	Vancouver	Stage	Ex. Sun.	7:30 AM 4:30 PM 10:00 AM 7:00 PM	Hand

Note 1—hourly 7:36 A.M. to 6:36 P.M., incl., 9:36 P.M., 12:36 A.M.
 © Phone Main 1271 Cheney for special service.
 © Weather permitting. Ask conductor.
 : 7:30 A.M. to 7:15 P.M.

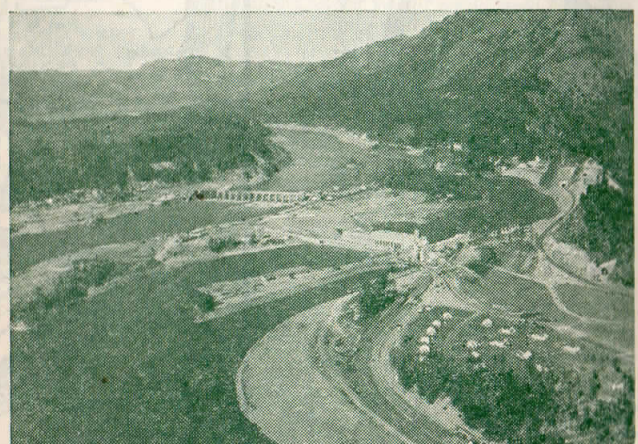
MAY 26, 1946

SUBJECT TO CHANGE WITHOUT NOTICE



Spokane, Portland & Seattle Ry.
Oregon Trunk Ry.

TIME TABLES



New Bonneville Dam

SPOKANE, PORTLAND AND SEATTLE RAILWAY SYSTEM



TRANSCONTINENTAL TRAIN SERVICE—BETWEEN PORTLAND, PASCO, SPOKANE AND EAST

VIA NORTHERN PACIFIC RY.

Eastbound, Read Down					Westbound, Read Up				
Daily No. 4	Daily No. 2	One Day Examp	Miles	Spokane, Portland and Seattle Railway	Daily No. 1	Daily No. 1	Daily No. 5-3		
9:00	8:45	Su.	* 0	Lv Portland, Union Station... Ar	7:35	7:35	4:40		
9:35	9:15	"	"	Lv Vancouver... Ar	7:05	7:05	4:10		
12:37	12:01	Su.	106	Lv Wishram... Ar	4:25	4:25	1:20		
3:45	2:40	Mo.	231	Ar Pasco... Lv	1:50	1:50	10:40		
No. 4	No. 2			Northern Pacific Ry.	No. 1	No. 3			
4:35	4:12	Mo.	231	Lv Pasco... Ar	12:38	10:20	10:30		
8:20	7:25	"	378	Ar Spokane (N.P. Station)... Lv	9:18	6:25	7:00		
No. 4	No. 2				No. 1	No. 3			
9:25	7:50	Mo.	378	Lv Spokane (N.P. Station)... Ar	8:53	6:05			
10:50	8:37	"	418	Ar Athol (Farragut Nav. Hosp.)... Lv	7:58	4:54			
11:45	9:18	"	446	" Sand Point... Ar	7:15	4:10			
7:00	3:15	"	687	" Missoula... Ar	3:04	11:00			
11:25	6:40	"	759	" Helena... Ar	x11.15	6:45			
11:10	6:05	"	761	" Butte... Ar	12:05	7:20			
2:55	9:25	"	857	" Bozeman... Ar	8:35	3:22			
4:05	10:20	"	883	" Livingston... Ar	7:33	2:20			
10:30	10:30	Tu.	937	Ar Gardiner (Yel. Nat'l Pk.)... Lv	* 7:45	* 7:45			
7:05	12:50	Tu.	998	Ar Billings... Lv	4:41	11:10			
11:02	4:10	"	1137	" Miles City... Ar	1:07	7:05			
1:15	5:50	"	1216	" Glendive... Lv	11:25	5:08			
11:35	8:18	"	1330	" Dickinson... Ar	8:54	2:13			
4:35	12:05	"	1445	" Bismarck... Ar	7:02	11:28			
7:30	2:00	"	1539	" Jamestown... Ar	4:43	8:30			
10:50	4:06	"	1630	" Fargo... Ar	2:25	5:40			
7:44	10:34	Tu.	1886	Ar Superior... Lv	z 7:35	z 8:02			
8:00	10:50	"	1890	" Duluth... Lv	z 7:20	z 7:50			
7:10	9:27	Tu.	1880	Ar Minneapolis (Hemp. Av. Sta.) Lv	9:10	11:05			
7:45	10:00	"	1890	Ar St. Paul (Union Station)... Lv	8:35	10:20			
Zephr No. 24	Zephr No. 22	No. 50		Burlington Route	No. 51	Zephr No. 23	Zephr No. 21		
4:30	8:25	10:30	Tu.	Lv St. Paul (Union Station)... Ar	8:15	10:30	3:15		
11:00	2:55	8:18	We.	Ar Chicago (Union Station)... Lv	11:00	4:00	9:00		
		No. 42		Burlington Route	No. 43				
	9:45	Tu.	998	Lv Billings... Ar		9:35			
	9:30	We.	1839	Ar Lincoln... Lv		11:40			
	9:50	We.	1894	Ar Omaha... Lv		9:30			
	6:15	"	2049	" Kansas City... Ar		6:00			

x Bus. z Motor. c Connects with No. 3 at Minneapolis.
 * Daily except Sunday by bus.

EASTBOUND EQUIPMENT

No. 2 North Coast Limited.—AIR CONDITIONED—(S.P. & S.-N.P.-C.B. & Q.) 8 section, buffet lounge (Car 10), Portland to Pasco; 3 compartment, 1 drawing room, buffet-lounge (N-67), Pasco to Chicago; 10 section, 1 drawing room, 1 compartment (P-40), 16 section tourist sleeping car (PN), reclining chair car, Portland to Chicago; dining car, Pasco to Chicago.

No. 4-4. Columbia River Express—Alaskan. Reserved seat coach, air conditioned, Portland to Pasco, Pasco to Spokane. Cafe car, air conditioned, Portland to Pasco, Pasco to St. Paul. Standard sleeping car, air conditioned, 10 sections, 1 compartment, 1 drawing room (Car 8), Spokane to St. Paul. Coaches, non-air conditioned, Portland to Pasco; air conditioned, Pasco to St. Paul.

WESTBOUND EQUIPMENT

No. 1. North Coast Limited.—AIR CONDITIONED—(C.B. & Q.-N.P.-S.P. & S.) 8 section, buffet lounge (Car 10), Pasco to Portland; 3 compartment, 1 drawing room, buffet-lounge (B-22), Chicago to Pasco; 10 section, 1 drawing room, 1 compartment (B-19), 16 section tourist sleeping car (BR); reclining chair car, Chicago to Portland. Dining car, Chicago to Pasco, Wishram to Portland.

No. 3 Alaskan.—AIR CONDITIONED. Connects with S.P. & S. No. 1 at Pasco. Standard sleeping car, 10 sections, 1 compartment, 1 drawing room (Car 9), St. Paul to Spokane. Cafe car, St. Paul to Pasco. Coach, St. Paul to Pasco, Pasco to Portland.

EMPIRE BUILDER AND NORTH COAST LIMITED ARE COMPLETELY AIR CONDITIONED

VIA GREAT NORTHERN RY.

Eastbound, Read Down					Westbound, Read Up					
Daily No. 4	Daily No. 2	Daily No. 2	One Day Examp	Miles	Spokane, Portland and Seattle Railway	Daily No. 1	Daily No. 1	Daily No. 5-3		
9:00	8:45	8:45	Su.	0	Lv Portland, Union Station... Ar	7:35	7:35	4:40		
9:35	9:15	9:15	"	10	Lv Vancouver... Ar	7:05	7:05	4:10		
12:37	12:01	12:01	Mo.	106	Lv Wishram... Ar	4:25	4:25	1:20		
3:45	2:40	2:40	"	231	Ar Pasco... Lv	1:50	1:50	10:40		
8:20			"	378	Ar Spokane, N.P. Station... Lv			7:00		
	6:50	6:50	"	380	Ar Spokane, G.N. Station... Lv	9:45	9:45			
No. 28	No. 2				Great Northern Ry.	No. 1	No. 27			
12:01	7:30	Mo.	380	Lv Spokane, G.N. Station... Ar	9:30	6:20				
2:25	9:30	"	455	Ar Sand Point... Lv		3:55				
3:25	10:12	"	488	" Bonner's Ferry... Ar	6:35	3:05				
8:55	3:15	"	676	" Kalispell... Ar	3:05	11:40				
10:25	4:35	"	673	" Belton... Ar	2:14	10:24				
12:34	6:40	"	734	" Glacier Park... Ar	12:33	8:40				
2:35	8:30	"	806	" Shelby... Ar	10:30	6:30				
	11:30	"	905	Lv Great Falls... Ar	7:00					
	6:55	Tu.	1128	Ar Billings... Lv	11:30					
5:35	11:05	Mo.	910	Ar Havre... Ar	8:10	3:30				
9:25	2:40	Tu.	1064	" Glasgow... Ar	4:30	12:15				
5:00	10:10	"	1340	" Minot... Ar	10:50	7:20				
	8:50	"	1548	" Grand Forks... Ar	5:25	9:10				
	11:10	"	1573	" Fargo... Ar	3:20	2:40				
	q 6:45	We.	1838	Ar Superior... Lv	† 9:45					
	q 7:00	"	1843	" Duluth... Lv	† 9:30					
5:55	9:15	Tu.	1804	Ar Minneapolis (Hemp. Av. Sta.) Lv	9:25	9:18				
6:30	9:45	"	1814	Ar St. Paul (Union Station)... Lv	8:50	8:45				
Zephr No. 24	Zephr No. 22	No. 44		Burlington Route	No. 49	Zephr No. 23				
4:30	8:25	10:15	Tu.	Lv St. Paul (Union Station)... Ar	8:30	8:30	10:30			
11:00	2:55	8:10	We.	Ar Chicago (Union Station)... Lv	11:15	11:15	4:00			
		No. 42		Burlington Route	No. 43					
	9:45	Tu.	1128	Lv Billings... Ar	9:35					
	9:30	We.	1969	Ar Lincoln... Lv	11:40					
	9:50	We.	2024	Ar Omaha... Lv	9:30					
	6:15	"	2179	" Kansas City... Ar	6:00					

‡ Stops to discharge passengers from Portland q Daily except Monday.
 † Except Sunday. ■ Stops June 15th to Sept. 15th

EQUIPMENT

No. 2. Empire Builder.—AIR CONDITIONED—(S.P. & S.-G.N.-C.B. & Q.) 8 section, buffet lounge (Car 10), Portland to Spokane; observation club car with sun room, observation room, lounge, buffet, shower bath, barber and valet service. Spokane to Chicago; 8 section, 1 drawing room, 2 compartment (P-6), 16 section tourist sleeping car (P-J), Portland to Chicago; coaches, Portland to Spokane, Spokane to Chicago; dining car, Spokane to Chicago.

No. 2-28. 8 section, buffet lounge (Car 10), 16 section tourist sleeping car (P-J), and coaches (all air conditioned), Portland to Spokane, and non-air conditioned coaches only, with light meal service, Spokane to St. Paul.

No. 4-4. Columbia River Express.—Air conditioned reserved seat coach, cafe, and non-air conditioned coach, Portland to Pasco. Air conditioned reserved seat coach and air conditioned coach via Northern Pacific Railway, Pasco to Spokane.

WESTBOUND EQUIPMENT

No. 1. Empire Builder.—AIR CONDITIONED—(C. B. & Q.-G. N.-S. P. & S.) Observation club car with sun room, observation room, lounge, buffet, shower bath, barber and valet service, Chicago to Spokane; 8 section, buffet lounge (Car 10), Spokane to Portland; 8 section, 1 drawing room, 2 compartment (B-6); 16 section tourist sleeping car (B-J), Chicago to Portland; coach, Chicago to Spokane, Spokane to Portland; dining car, Chicago to Spokane, Wishram to Portland.

No. 27-1. Non-air conditioned coaches only, with light meal service, St. Paul to Spokane. 8 section buffet lounge (Car 10), 8 section, 1 drawing room, 2 compartments (B-6), 16 section, tourist sleeping car (B-J), and coaches, Spokane to Portland.

No. 5-3. Columbia River Express.—Air conditioned reserved seat coach cafe, and air conditioned coach, Spokane to Pasco via Northern Pacific Ry. Air conditioned reserved seat coach and non-air conditioned coach, Pasco to Portland via S.P. & S. Railway.

N.A.C. Non-air conditioned Light face figures denote A.M. time Bold face figures denote P.M. time Ar. Arrive Lv. Leave / Stop on signal



SPOKANE, PORTLAND AND SEATTLE RAILWAY SYSTEM

OREGON TRUNK RY.

Pacific Standard Time

PORTLAND - WISHRAM - PASCO - SPOKANE TRAINS

Table with columns for train numbers, directions (Eastbound/Read Down, Westbound/Read Up), and stations (Spokane, Portland, Pasco, Wishram, Vancouver). Includes special stops and equipment details.

PORTLAND - REDMOND - BEND TRAINS

Table with columns for train numbers, directions (Read Down, Read Up), and stations (Portland, Redmond, Bend, Wishram, Vancouver). Includes special stops and equipment details.

EQUIPMENT BETWEEN PORTLAND and BEND Trains Nos. 2-102 and 1-103. Coaches daily between Portland and Wishram and Bend (N.A.C.); observation cars daily between Portland and Wishram, A.C. See page 3.

CONNECTION AT BEND FOR KLAMATH FALLS See schedule of Great Northern Railway on page 9.

LYLE - KLICKITAT - GOLDENDALE TRAINS

Table with columns for train numbers, directions, and stations (Lyle, Klickitat, Goldendale, Pasco, Vancouver). Includes special stops and equipment details.

SAFETY FIRST - friendliness too!

EQUIPMENT-BETWEEN PORTLAND, PASCO AND SPOKANE

Over-Night Limited. Trains Nos. 1 and 2. All regularly assigned equipment is air-conditioned. 8 section, Buffet Lounge S P & S-(Car-10); 8 section, 1 drawing room, 2 compartments (G N, P-6); 10 section, 1 drawing room, 1 compartment, (N P, P-40); 16 Section (P-N and P-J) tourist sleeping cars and coaches with lounges for women and men, and individual, reclining seats. N. A. C. coach between Portland and Wishram and Wishram and Bend. Dining car Wishram to Portland.

For Special Stops on Nos. 1 and 2. See left column, page 3, and under "References" below.

References: a Will stop to discharge revenue passengers from Spokane. b Will stop on signal to receive revenue passengers for Bingen-White Salmon, Vancouver and Portland. c Will stop on signal to receive revenue passengers for Vancouver and Portland. f Stop on signal. g Will stop on signal to discharge revenue passengers from Portland and Vancouver. h Will stop to discharge revenue passengers from Portland, Vancouver and Bingen-White Salmon. k Stops daily except Sunday. m Stops to receive or discharge revenue passengers to or from Pasco and East. t Telegraph stations. N.A.C. Non air-conditioned. A.C. Air conditioned.

Light face figures denote A. M. time. Bold face figures denote P. M. time. Arr. Arrive. Lv. Leave. / Stop on signal.



SPOKANE, PORTLAND AND SEATTLE RAILWAY SYSTEM

PORTLAND - ST. HELENS RAINIER - ASTORIA - CLATSOP BEACH TRAINS

Table with columns for train numbers, directions (Westbound-Read Down, Eastbound-Read Up), and stations (Portland, St. Helens, Rainier, Astoria, Clatsop Beach, Seaside). Includes special stops and equipment details.

ONLY FREIGHT SERVICE is operated on the following Branches of the Spokane, Portland and Seattle Railway and the Oregon Electric Railway.

Tables for S. P. & S. Railway, Oregon Electric Railway, and Forest Grove Branch. Includes station names and distances.

RESPONSIBILITY

Not Responsible-The Spokane, Portland and Seattle Railway Company is not responsible for errors in time tables, inconvenience or damage resulting from delayed trains or failure to make connections; schedules herein are subject to change without notice.

TRAIN EQUIPMENT

Nos 21 and 22, carry coaches and observation-reserved seat coach; seat fare 30c (plus tax). Also meal service between Portland, Astoria, Gearhart and Seaside.

PACIFIC TRAILWAYS (Mt. Hood Stages, Inc.)

Table with columns for train numbers, directions, and stations (Portland, Maupin, Madras, Metolius, Culver, Redmond, Bend). Includes special stops and equipment details.

CLATSOP BEACH SEASIDE - GEARHART PACIFIC OCEAN ALL-YEAR SEASHORE RESORT. Surrounded by evergreen forests and a background of mountains, Clatsop Beach has every facility for visitors—golf courses, fishing, amusement places, sea foods, pure water, good hotels, restaurants, cottages, and camps. Along the expanding Columbia River, from Portland to Astoria. Train schedules page 5.

Light face figures denotes A. M. time. Bold face figures denote P. M. time. Arr. Arrive. Lv. Leave. / Stop on signal. t Telegraph office.

Be Wise ECONOMIZE Buy ROUND TRIP TICKETS Choice of DAY or NIGHT SERVICE BETWEEN Portland & Spokane

LIVE SAFELY to LIVE LONGER



"For you a Rose in Portland Grows"

FREIGHT SERVICE

Route your freight shipments via the Spokane, Portland and Seattle Railway for fast and dependable service—between Portland, Astoria, Spokane, Yakima, Walla Walla, Pendleton, Lewis-ton, Bend and all points east and south.

Let Us Handle Your Transportation Problems

Light face figures denote A. M. time. Bold face figures denote P. M. time. Arr. Arrive. Lv. Leave. / Stop on signal. t Telegraph office.



SPOKANE, PORTLAND AND SEATTLE RAILWAY SYSTEM

Sleeping, Parlor Car and Reserved Seat Fares

Federal Tax Extra

For information only. Subject to change without notice.

BETWEEN AND Effective April 1, 1942	PORTLAND		SPOKANE		Table basis for determining charges for Standard Upper Berths, Drawing Rooms and Compartments				
	Seat	Lower Berth Stand-ard	Tour-ist	Lower Berth Stand-ard	Tour-ist	Where Lower Berth rate is	Upper berth rate will be	Drawing Room rate will be	Compart-ment rate will be
Astoria, Ore.	*30	\$ 8.45	\$ 5.65	\$ 5.25	\$ 3.55				
Billings, Mont.	*20	25.15	22.30	22.30	2.00				
Bingen-Wb. Salmon, Wn.		7.55	5.10	4.35	2.95	\$ 2.35	\$ 1.80	\$ 8.10	\$ 6.95
Boston, Mass.		22.30	19.65	19.65	2.65	2.00	9.25	7.55	
Boseman, Mont.		6.70	4.50	3.50	2.35	2.20	10.40	8.10	
Buffalo, N. Y.				3.20	2.15	3.20	2.45	11.55	9.25
Butte, Mont.	*15								
Camas, Wash.									
Chicago, Ill.		18.25	12.20	15.35	10.25	3.50	2.65	12.75	9.85
Cincinnati, Ohio		20.25		17.35		4.35	3.30	16.20	12.20
Cleveland, Ohio		20.80		18.25		4.65	3.55	16.20	13.35
Denver, Colo.		12.20		11.30		4.95	3.75	17.35	13.90
Detroit, Mich.		20.25		17.35		5.25	4.00	18.50	15.05
Duluth, Minn.		15.35	10.25	12.75	8.50	5.80	4.40	20.80	16.20
Eugene, Ore.	.80	2.35	1.55	4.65	3.10	1.65	4.65	21.95	17.35
Fargo, N. D.		13.60	9.10	10.40	6.95	6.40	4.85	23.10	17.95
Gardiner, Mont.		8.10		4.95		6.70	5.10	24.30	19.10
Glacier Park, Mont.		6.40	4.30	3.20	2.15	7.55	5.75	26.60	21.40
Grants Pass, Ore.		2.95	2.00	6.15	4.10	7.85	5.95	27.75	21.95
Great Falls, Mont.		8.10		4.65		8.10	6.20	28.90	23.10
Havre, Mont.		8.10	5.35	4.95	3.30	8.45	6.40	30.05	23.75
Helena, Mont.		6.70	4.50	3.50	2.35	9.60	7.30	33.50	27.20
Kansas City, Mo.		15.35		13.35		9.85	7.50	34.65	27.75
Klamath Falls, Ore.	1.90	2.95	2.00	6.40	4.30	10.40	7.95	37.00	29.50
Livingston, Mont.		7.85	5.25	4.65	3.10	11.30	8.60	40.45	31.80
Los Angeles, Calif.		9.60	6.40	13.05	8.70	12.20	9.25	42.75	34.10
Louisville, Ky.		20.25		17.35		12.75	9.70	45.05	35.85
Lyle, Wash.	*20			2.95	2.00	13.05	9.90	46.20	36.45
Medford, Ore.		2.95	2.00	6.40	4.30	13.35	10.15	47.40	37.60
Minneapolis, Minn.		15.35	10.25	12.75	8.50	13.60	10.35	48.55	38.15
Missoula, Mont.		5.80	3.85	2.95	2.00	14.75	11.25	52.00	41.60
New Orleans, La.		21.95		20.25		15.35	11.70	54.30	43.35
New York, N. Y.		25.15		22.30		17.35	13.20	61.25	48.55
Oakland, Calif.		6.40	4.30	9.85	6.60	18.25	13.90	64.70	51.45
Omaha, Neb.		15.35		12.75		18.85	14.30	65.85	52.60
Pasco, Wash.	*35	2.95	2.00	2.35	1.55	19.65	15.00	69.30	55.45
Philadelphia, Pa.		24.30		21.70		20.00	15.20	70.50	56.05
Pittsburgh, Pa.		21.70		18.85		20.25	15.40	71.65	56.60
Portland, Ore.				3.50	2.35	21.70	16.50	76.25	60.70
Roseburg, Ore.		2.65	1.80	5.25	3.55	21.95	16.75	77.40	61.85
St. Louis, Mo.		17.35		14.75		22.30	16.95	78.55	62.40
St. Paul, Minn.		15.35	10.25	12.75	8.50	24.30	18.50	85.50	68.15
Sacramento, Calif.		6.15	4.10	9.60	6.40	25.15	19.15	88.95	70.50
San Antonio, Texas		20.00	13.35						
San Francisco, Calif.		6.40	4.30	9.85	6.60				
Seaside, Ore.	*30								
Seattle, Wash.	1.20	2.95	2.00	3.50	2.35				
Spokane, Wash.	*50	3.50	2.35						
Stevenson, Wash.	*20			2.95	2.00				
Tacoma, Wash.	.90	2.95	2.00	3.50	2.35				
Vancouver, Wash.	*15			3.50	2.35				
Washington, D. C.		24.30		21.70					
Wishram, Wash.	*25			2.95	2.00				

The charge for upper berths in Tourist cars is approximately 76% of the charge made for lower Tourist berth.

Applies for 2 or more passengers. When occupied by one passenger drawing room rate is 2 1/2 times Standard lower berth rate and compartment is two times Standard lower berth rates.

Rate for section when lower berth only is occupied will be quoted by ticket agents.

When both lower and upper berths are used, combination of fares will apply.

* Reserved Seat Coach fares on day trains.

Through cars not operated in all trains; fare applies for continuous trip via direct connections. A compartment is a private room with lower and upper berths and toilet; a drawing room has a divan berth in addition. Occupancy of a drawing room requires 1 1/2 adult rail tickets, or their equivalent; requirement for compartment, one such ticket between S. P. & S. N. P.-G. N. and connections, 1 1/4 between certain other lines; requirement for section, one such ticket.

BAGGAGE IN SLEEPING CARS.—Hand baggage in sleeping cars is restricted to what may conveniently be placed in berth or at seat occupied by passengers. All baggage should be marked with name and permanent address of owner.

GENERAL OFFICES

EXECUTIVE, TRAFFIC AND PURCHASING DEPARTMENTS

American Bank Building, 621 S. W. Morrison Street

ACCOUNTING AND OPERATING DEPARTMENTS

N. W. Eleventh Avenue and N. W. Hoyt Streets

PORTLAND, OREGON

- | | | |
|------------------------|--|--------------------|
| F. J. GAVIN..... | President..... | St. Paul 1, Minn. |
| C. E. DENNEY..... | Vice-President..... | St. Paul 1, Minn. |
| T. F. DIXON..... | Vice-President and General Manager, Portland 7, Oregon | |
| ROBT. CROSBIE..... | Comptroller..... | Portland 7, Oregon |
| L. W. ALBERTSON..... | Assistant Comptroller..... | Portland 7, Oregon |
| C. D. PHELIPS..... | Auditor Disbursements..... | Portland 7, Oregon |
| E. C. MICHELSEN..... | Auditor Revenue Accounts..... | Portland 7, Oregon |
| A. J. WITCHEL..... | Secretary and Chief Engineer..... | Portland 7, Oregon |
| T. L. PADDEN..... | Treasurer..... | Portland 7, Oregon |
| G. R. WILLIAMS..... | Purchasing Agent..... | Portland 7, Oregon |
| E. H. SHOWALTER..... | Superintendent..... | Portland 7, Oregon |
| J. C. MOORE..... | Traffic Manager..... | Portland 7, Oregon |
| H. W. SHIELDS..... | General Passenger Agent..... | Portland 7, Oregon |
| GEO. F. EHLEN..... | General Freight Agent..... | Portland 7, Oregon |
| L. S. DAVIS..... | Asst. to the Gen. Frt. & Pass. Agt. | Portland 7, Oregon |
| KENNETH C. MILLER..... | General Industrial and Agricultural Agent..... | Portland 7, Oregon |
| W. P. GARRETT..... | Right of Way and Tax Agent..... | Portland 7, Oregon |

Representatives

- | | | | |
|---|---|-------------------------------------|---------------------------------|
| ALBANY, ORE. | WM. BODNO..... | (Phone M. 291) Agt., O. E. Ry. Sta. | |
| ASTORIA, ORE. | R. C. BAKER, 20th and Commercial (Phone 113) Agent | H. W. LINDSAY..... | City Passenger and Ticket Agent |
| BEND, ORE. | ALBERT ALLEN (Phone 454)..... | Agent, Passenger Sta. | |
| | B. P. GILBERT (Phone 438)..... | Trav. Frt. & Pass. Agt. | |
| | S. A. SEXSMITH (Phone 107)..... | Agent, O. E. Ry. Sta. | |
| EUGENE, ORE. | E. B. NELSON..... | Traveling Freight Agent | |
| HILLSBORO, ORE. | L. SHERMAN (Ph. M. 541)..... | Agnt., O. E. Ry. Frt. Depot | |
| JUNCTION CITY, ORE. | M. A. McDANIEL (Ph. M. 382)..... | Agnt., O. E. Ry. Frt. Depot | |
| LOS ANGELES 14, CALIF. | Great Northern Railway, 918-919 Associated Realty Bldg., Phone Vandike 1201. | | |
| | W. E. MCCORMICK..... | General Agent | |
| | S. L. WILLIAMS..... | District Passenger Agent | |
| | H. D. HANSCOM..... | Trav. Freight & Pass. Agent | |
| Northern Pacific Railway, 519 Associated Realty Bldg., Phone Trinity 2322. | | | |
| | J. C. SPRACKLIN..... | General Agent | |
| | J. E. BEATTY..... | City Freight & Pass. Agent | |
| | J. V. KRISMAN, Traveling Freight & Passenger Agent | | |
| OAKLAND 12, CAL. | G. R. LALLY, Gen. Agt., Gt. Nor. Ry., 611-612 Central Bank Building, Phone Templebar 7672-73. | | |
| | D. F. WALKER, Gen. Agt., Nor. Pac. Ry., 815 Central Bank Building, Phone Glencourt 8717. | | |
| PORTLAND, ORE. | A. F. LEE..... | General Agent | |
| | Consolidated Ticket Office, S. W. Broadway and Morrison St. Telephone BRy. 5631. | | |
| | J. L. MILLER, Ticket Agent, Union Station, Foot of N. W. 6th Avenue, Telephone Broadway 3421. | | |
| | R. E. HENDERSHOTT..... | General Agent | |
| | R. A. LAWRENCE..... | Trav. Freight and Pass. Agent | |
| | W. Z. MYERS..... | City Freight Agent | |
| | G. A. SILK WORTH..... | City Freight Agent | |
| | C. J. LIVINGSTON..... | District Passenger Agent | |
| | T. J. MARTIN..... | Traffic Representative | |
| | P. H. BRINGMANN, Local Freight Agent, N. W. 11th and Hoyt, Phone ATwater 9111. | | |
| REDMOND, ORE. | G. W. SEXSMITH (Phone 13) Agt., Passenger Station | | |
| SACRAMENTO, CAL. | H. D. DAY, Gen. Agt., Gt. Nor. Ry., 223 Forum Bldg. | | |
| ST. HELENS, ORE. | M. RUTHERFORD (Phone 58) Agt., S. P. & S. Station | | |
| SALEM, ORE. | J. CONDRA (Phone 4763)..... | O. E. Ry. Freight Depot | |
| SAN FRANCISCO 5, CAL. | Northern Pacific Railway, 657 Market St. Phone Sutter 1078. | | |
| | DANIEL TINNEY..... | General Agent | |
| | W. C. BERBERG..... | Trav. Freight and Pass. Agt. | |
| | C. H. GAARBERG..... | Trav. Freight and Pass. Agent | |
| | W. J. HILDRELL..... | City Freight and Pass. Agent | |
| Great Northern Railway, 679 Market Street, Phone Sutter 6051-52. | | | |
| | A. J. SCOTT..... | General Agent, Passenger Dept. | |
| | C. G. ALEXANDER..... | Traveling Passenger Agent | |
| | JOSEPH L. TIERNEY..... | City Passenger Agent | |
| SEASIDE, ORE. | C. O. BUTLER (Phone 45) Agt., S. P. & S. Ry. Sta. | | |
| SPOKANE 8, WASH. | J. C. WRIGHT, General Agent. | | |
| | HAROLD F. ERZ, City Frt. & Pass. Agt., 925 Old National Bank Building, Phone Main 4238. | | |
| | R. C. MURPHY, General Agent, Passenger Dept., Davenport Hotel, Phone Main 5141. | | |
| | E. F. BAIRD, City Passenger and Ticket Agent, Sprague Ave. and Wall St. Phone Main 5321. | | |
| | H. W. GREEN..... | Ticket Agent, Gt. Nor. Ry. Sta. | |
| VANCOUVER, WASH. | H. M. LARTEW, Agent (Phone 2881), S. P. & S. Ry. Sta. | | |
| | R. I. THOMPSON (Phone 735)..... | Passenger Station | |

Agents of the Great Northern and Northern Pacific Railways are the direct representatives of the Spokane, Portland, and Seattle Railway Company, Oregon Trunk Railway and Oregon Electric Railway Company in California, and throughout the United States.

THE DAY TRIP

Between
PORTLAND AND SPOKANE
on the
COLUMBIA RIVER EXPRESS

Between Portland and Pasco, via S. P. & S. Ry., and directly connecting trains between Pasco and Spokane via Northern Pacific Ry., with similar service.

AIR-CONDITIONED RESERVED SEAT COACHES WITH CAFE SERVICE

This is the day train service between these important cities through a fascinating country.

Reserved Seats

Reserved seats (50c plus tax) are of the latest individual, adjustable type, and passengers may enjoy many club features, including observation section, magazines, card table, writing desk, etc., with the dining room for sixteen guests, offering a generous range of menu at moderate prices.

Dining Room

Mt. Hood and others of the Cascade Range, the great Bonneville dam, two crossings of the Columbia river with 220 miles along its north bank, with forests, waterfalls, etc.

Observation Section

Schedules and equipment of these trains and of the night limited trains are shown on page 8.



ENJOY YOUR VACATION

AT

CLATSOP BEACH
GO-BY-TRAIN

