



**STEWARDESS-NURSE SERVICE**—A registered nurse is always in attendance. She is friendly, competent, and ready to minister to the needs of all passengers within the limits of her profession.

**ATTENDANTS**—The staff, throughout the entire train, has been carefully chosen for outstanding ability. They are courteous and helpful, leaving nothing to be desired in dignified service.

**AIR-CONDITIONING**—Every car of these fine trains is completely air-conditioned with latest type equipment, assuring a constant change of clean, cooled air at all times.



## SCHEDULES

Corrected to April 27, 1941

CHICAGO—DES MOINES—OMAHA—LINCOLN—  
DENVER—COLORADO SPRINGS

No. 7 DAILY			No. 8		
1:55 pm Lv.	Chicago (La Salle St. Station)	Ar.	8:50 am		
2:04 pm Lv.	Englewood (63rd Street)	Ar.	8:37 am		
3:43 pm Ar.	Bureau	Lv. ①	6:57 am		
4:42 pm Ar.	Moline	Lv.	6:03 am		
4:53 pm Ar.	Rock Island	Lv.	5:58 am		
4:59 pm Ar.	Davenport	Lv.	5:46 am		
5:50 pm Ar.	Iowa City	Lv.	4:53 am		
6:45 pm Ar.	Grinnell	Lv. ①	3:55 am		
7:07 pm Ar.	Newton	Lv. ①	3:36 am		
7:50 pm Ar.	Des Moines	Lv.	2:55 am		
9:25 pm Ar.	Atlantic	Lv.	1:21 am		
10:27 pm Ar.	Council Bluffs	Lv.	12:20 am		
10:55 pm Ar.	Omaha	Lv.	12:06 am		
12:15 am Ar.	Lincoln	Lv.	10:49 pm		
1:11 am Ar.	Fairbury	Lv.	9:50 pm		
2:03 am Ar.	Bellevue	Lv.	9:10 pm		
2:40 am Ar.	Mankato	Lv.	8:19 pm		
3:12 am Ar.	Smith Center	Lv.	7:49 pm		
3:40 am Ar.	Phillipsburg (Cent. Time)	Lv.	7:20 pm		
2:42 am Lv.	Phillipsburg (Mt. Time)	Ar.	6:17 pm		
3:18 am Ar.	Norton	Lv.	5:46 pm		
4:18 am Ar.	Colby	Lv.	4:49 pm		
4:50 am Ar.	Goodland	Lv.	4:19 pm		
5:23 am Ar.	Burlington	Lv. ①	3:49 pm		
6:39 am Ar.	Limon	Lv.	2:40 pm		
8:25 am Ar.	Denver	Lv.	1:00 pm		
8:35 am Ar.	Colorado Springs	Lv.	12:45 pm		

### KANSAS CITY, TOPEKA and DENVER—COLORADO SPRINGS

No. 107-7 DAILY			No. 8-108		
10:00 pm Lv.	Kansas City, Mo.	Ar.	12:55 am		
F 10:04 pm Lv.	Kansas City, Kan.				
11:08 pm Ar.	Topeka	Lv.	11:45 pm		
12:12 am Ar.	Manhattan	Lv.	10:46 pm		
12:54 am Ar.	Clay Center	Lv.	10:05 pm		
1:21 am Ar.	Clyde	Lv.	9:39 pm		
1:50 am Ar.	Belleville	Lv.	9:10 pm		
2:40 am Ar.	Mankato	Lv.	8:19 pm		
3:12 am Ar.	Smith Center	Lv.	7:49 pm		
3:40 am Ar.	Phillipsburg (Cent. Time)	Lv.	7:20 pm		
2:42 am Lv.	Phillipsburg (Mt. Time)	Ar.	6:17 pm		
3:18 am Ar.	Norton	Lv.	5:46 pm		
4:18 am Ar.	Colby	Lv.	4:49 pm		
4:50 am Ar.	Goodland	Lv.	4:19 pm		
5:23 am Ar.	Burlington	Lv. ①	3:49 pm		
6:39 am Ar.	Limon	Lv.	2:40 pm		
8:25 am Ar.	Denver	Lv.	1:00 pm		
8:35 am Ar.	Colorado Springs	Lv.	12:45 pm		

① Conditional Stop. Schedules subject to change without notice.

### EQUIPMENT

Baggage Car—Chicago-Denver  
 Chair Car-Mail—Chicago-Colorado Springs  
 Chair Car—Chicago-Denver  
 Chair Car—Kansas City-Denver  
 Pullman—8 Sections—5 Double Bedrooms—Kansas City-Denver  
 Diner—Chicago-Denver  
 Pullman—8 Sections—2 Double Bedrooms—2 Compartments—Chicago-Colorado Springs  
 Pullman—10 Sections—4 Roomettes—Chicago-Denver  
 Observation—Buffet Lounge, Radio—5 Double Bedrooms—Chicago-Denver

P. W. JOHNSTON, General Passenger Agent  
 KANSAS CITY, MISSOURI

T. W. BOWDRY, General Passenger Agent  
 FORT WORTH, TEXAS

A. D. MARTIN, Passenger Traffic Manager  
 CHICAGO, ILLINOIS

# THE ROCKY MOUNTAIN ROCKET

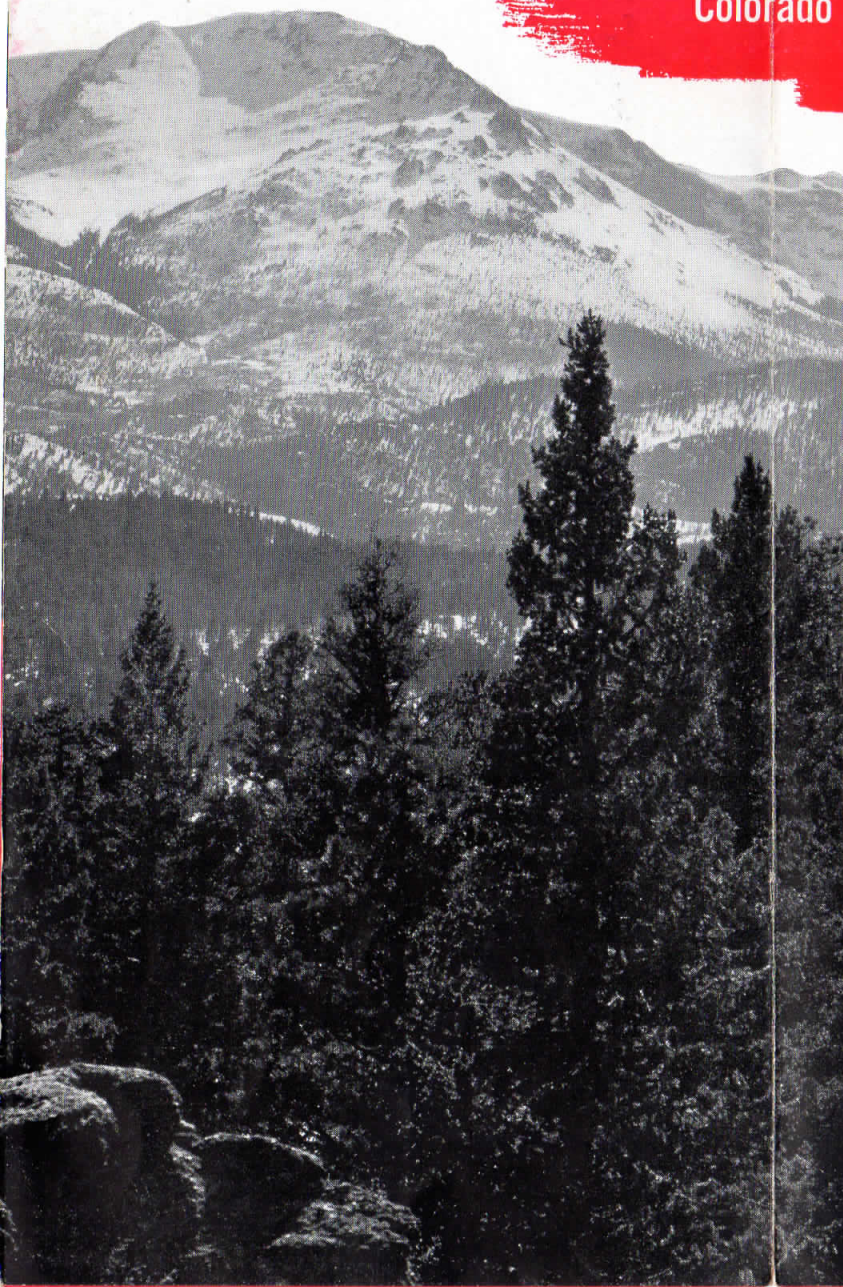


BETWEEN  
**CHICAGO AND DENVER-  
 COLORADO SPRINGS**  
 AND BETWEEN  
**KANSAS CITY  
 AND COLORADO**

**ROCK ISLAND LINES**

# MAP YOUR TRIP

THE STREAMLINED LUXURY WAY TO COLORADO VACATIONLANDS



COLORADO—THE ROCKY MOUNTAIN PLAYGROUND. No more glorious vacationland than Colorado can be found on the entire American continent. Here is such a variety of scenic wonders—majestic snow-capped mountains, clear rippling streams, fragrant evergreen forests and strange, mysterious caverns. Add to these an exhilarating climate and convenient facilities for every summer sports activity—this is COLORADO-Vacationland Supreme.

The two gateways to this Rocky Mountain Region are *Denver* and *Colorado Springs*.

DENVER, Colorado's mile-high capital, is the gateway to such inspiring sights as Big Thompson Canyon, Estes Park, Rocky Mountain National Park, Long's Peak, Grand Lake, Mount Evans and Echo Lake.

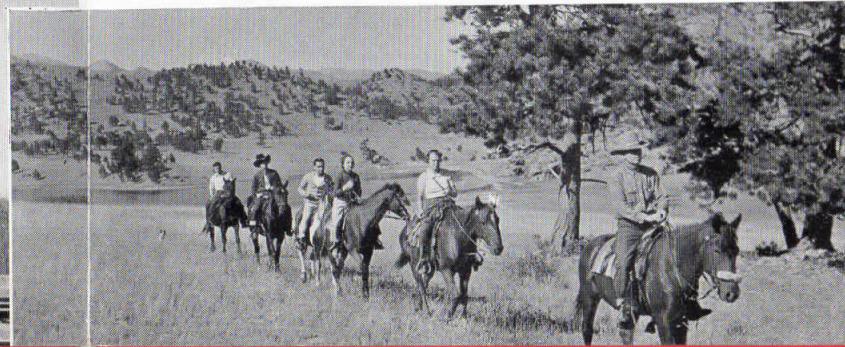


COLORADO SPRINGS is more than a gateway to a vacation area, it is a vacationland in itself. Near-by are Pikes Peak, the Garden of the Gods, Manitou, South Cheyenne Canyon and Seven Falls.

The ROCKY MOUNTAIN ROCKET operates over the only route affording separate, direct lines and independent through service from Chicago to both these gateways. Excellent service from Chicago through Des Moines, Omaha and Lincoln, and from Kansas City via Topeka to Belleville, where the trains consolidate. From Limon, where the train divides, both coach and sleeping car facilities are available to both Denver and Colorado Springs.

These fine trains have been built for speed, safety and comfort. They serve a highly developed intermediate territory.

Diesel-powered and roller bearing equipped, they operate smoothly at a cruising speed in excess of 90 miles per hour.





# EXTRA REFINEMENTS AT NO EXTRA FARE

No expense has been spared, no detail overlooked, to make the ROCKY MOUNTAIN ROCKETS outstanding in every respect. Brilliantly colorful in red, maroon and stainless steel, the exteriors present an unrivalled appearance of flashing beauty. The interiors of all cars are harmoniously decorative with unity of color throughout. The same general fabrics have been used, but by allocating their colors and uses, a pleasing effect has been maintained. The walls, carpets and curtains are of blending shades but with sufficient contrast to assure pleasant variety. Windows are unusually wide and are shatter-proof. Illumination is subdued, yet brilliant in effect, and reaches its climax in the fluorescent lighting of the dining car.



(upper left) Writing desk in observation lounge.



(above) View of the comfortable chair cars with reclining seats.



(left) Note the club-like atmosphere of the luxurious observation lounge.

**OBSERVATION AND SLEEPING CARS**—There are four distinct types of sleeping accommodations—the roomette, the double bedroom, the compartment and the section (upper and lower berths), each catering to the individual desires of discriminating travelers. In the last car is the observation section with radio, library, writing desk and buffet lounge. Twenty-five inviting chairs, companionably grouped and attractively upholstered, provide complete relaxation.

A competent buffet attendant caters to refreshment desires. A musical chime announces the meal hours.

**A FINER DINER**—The luxurious atmosphere and roomy comfort of the dining car are enough to whet the most jaded appetite. There are seating accommodations for forty-eight persons and the carefully designed table service is especially attractive.

Chefs and waiters are master craftsmen, and fulfill every service desire. They silently and swiftly serve the "Best Meals On Wheels" at reasonable prices. Menus are varied and wholesome, with perfectly prepared staple foods and out-of-season delicacies.

Tray service from the dining car is available to coach passengers at their seats.

**RECLINING SEAT CHAIR CARS**—Chair car equipment is available to patrons traveling at coach fares. These roomy cars have chairs with adjustable, reclining backs which may be faced forward or swung to face the windows. They lower to a desirable position for restful sleep. The cushions, scientifically contoured and luxuriously padded, give maximum comfort. Upholstery is in soft tones blending with the interiors of the cars.

Large, well-lighted, spotlessly clean, smoking and rest rooms are available for both men and women. Ample seating space is provided. Built-in dressing tables are conveniently placed in the women's rooms. Latest type drinking fountains assure a constant supply of cooled drinking water.

Floors are covered with resilient rubber tiling, which is sound-deadening, and gives firm footing. Luggage racks are streamlined, are ample for all luggage and packages, and complement the interior beauty of the cars. Lighting is improved to closely resemble daylight, and is so subdued at night that it does not interfere with sound slumber. Pillows are furnished free to overnight patrons.

The artistic decorations throughout, and the general air of luxurious comfort, assure a completely delightful journey.



Observation Lounge



Chair Car  
Diner



**THE NEW COMPARTMENT . . .** Gone are section seats by the window, replaced by a transverse sofa affording ample lounging space. The upper berth remains above the window, and is at right angles to the convertible sofa-bed. Within the compartment is a comfortable lounge chair. At night the chair is placed under the upper berth where it is still available for lounging and reading. Occupants are therefore provided during the day with a comfortable sofa, on which they may sit or recline, and also an easy chair. Each compartment has complete toilet facilities, a locker for clothes, shoebox, and the latest designs in lighting fixtures. There is ample space for luggage.

**THE ROOMETTE . . .** A completely enclosed private room for one person. Conveniences include individual regulation of ventilation, heat and lighting; private toilet facilities; a mirrored cabinet for toilet articles; a clothes locker and large rack for luggage; vacuum water bottle; a box from which porter can remove shoes for shining without disturbing the occupant. The door can be locked at night or left open and a curtain with a "zipper" drawn across the aperture. By day, the bed folds into the wall and the occupant has a sofa-seat of the latest and most comfortable design. There is ample space for lounging or undressing before the bed is lowered. This is a simple operation.

**THE DOUBLE BEDROOM . . .** An enclosed private room with a wide comfortable sofa. At night this sofa becomes a roomy bed, above which is an upper berth that also makes into a bed. Conveniences include private toilet facilities, a hinged table, individually controlled heat, light and ventilation, vacuum water bottle, clothes hooks, full length mirror and ample luggage space.

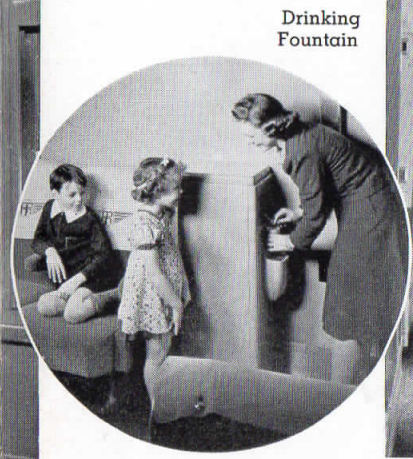
**THE SECTION . . .** May be reserved for one or two persons. In the former case it is called a single occupancy section; in the latter, a double occupancy section. In either case the upper is raised to give full head room. Upper and lower berths may also be occupied as individual units.

**The Lower Berth . . .** Includes electric lights, adjustable shelf for luggage, hanger for clothes, and will accommodate one or two adults. The spring mattress is of finest hair-type and two pillows are provided. For daytime use, the passenger holding the lower berth has the seat facing forward.

**The Upper Berth . . .** Pullman's most modest accommodation, includes a window, electric lights, and hangers for clothes. May be occupied by one or two adults.



Double Bedroom



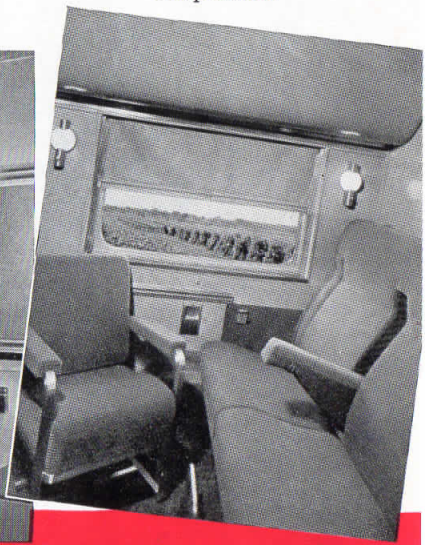
Drinking Fountain



Sections



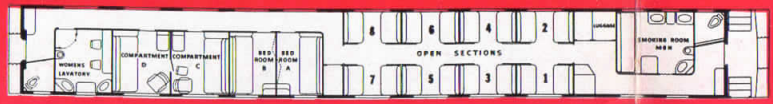
Roomette



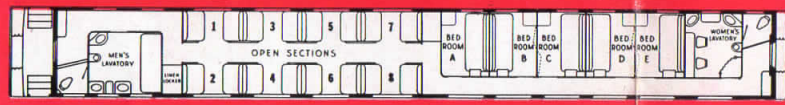
Compartment



10 SECTION—4 ROOMETTE PULLMAN—CHICAGO—DENVER



8 SECTION—2 DOUBLE BEDROOM—2 COMPT. PULLMAN—CHICAGO—COLORADO SPRINGS



8 SECTION—5 DOUBLE BEDROOM PULLMAN—KANSAS CITY—DENVER

**DIAGRAMS OF EQUIPMENT ON THE ROCKY MOUNTAIN ROCKET**



DINING CAR—48 SEATS—CHICAGO—DENVER



RECLINING SEAT CHAIR CAR—44 SEATS—CHICAGO—COLORADO SPRINGS



RECLINING SEAT CHAIR CAR—52 SEATS—CHICAGO—DENVER  
RECLINING SEAT CHAIR CAR—52 SEATS—KANSAS CITY—DENVER



OBSERVATION—5 DOUBLE BEDROOM PULLMAN—CHICAGO—DENVER

Ask About "Train Auto Service" and "Travel on Credit"

Reservations: All seats in reclining seat chair cars as well as Pullman accommodations are reserved and individually assigned in advance, except in Kansas City-Denver chair car.