

Principal cities and areas in Indiana, Illinois and Kentucky served on the Monon Railroad's 540-mile system.

PASSENGER & FREIGHT
FREIGHT ONLY



GENERAL OFFICES: McCORMICK BUILDING
332 S. MICHIGAN AVENUE, CHICAGO, ILLINOIS (60604) HARRISON 7-3303

W. C. COLEMAN, President, Chicago
 J. J. STEIN, Vice President, Operations, Chicago
 W. C. COLEMAN, JR., Vice President-Traffic and Marketing, Chicago

SALES AND MARKETING DEPARTMENT
 P. T. di LUSTRO, National Sales Manager, Chicago
 WM. R. JONES, General Manager Coal Sales, Chicago
 O. W. EISEMON, Assistant General Manager Coal Sales, Chicago
 H. L. HOFFMAN, Eastern Sales Manager, New York
 J. R. MCCARTHY, Southern Sales Manager, Atlanta
 W. T. FLINN, Western Sales Manager, Chicago

FREIGHT TRAFFIC DEPARTMENT
 C. A. PFISTER, Freight-Traffic Manager (Rates)

PASSENGER TRAFFIC DEPARTMENT
 C. G. SHOULTY, District Passenger Sales Manager, Chicago, Ill.

FREIGHT SALES AGENCIES

	Telephone
Atlanta, Ga. (30303) — 710 Hartford Building	522-9462
A. L. COUEY, District Sales Manager	
Birmingham, Ala. (35203) — 1610 First National Building	322-0687
EZRA C. BEASON, District Sales Manager	
Boston, Mass. (02116) —	
441 Statler Office Building, 20 Providence Street	482-9450
T. W. O'ROURKE, District Sales Manager	
Charlotte, N. C. (28202) — 1115 Baugh Building	376-6637
FRANK E. REDMON, District Sales Manager	
Chicago, Ill. (60604) — 322 South Michigan Avenue	427-3303
A. R. (BUZZ) VOISS, District Sales Manager	
L. E. EICH, Assistant District Sales Manager	
E. N. MEADERS, Assistant District Sales Manager	
R. P. FISHER, Sales Representative	
G. HARVEY KITSON, Sales Representative	
Cincinnati, O. (45203)	
Room S-105, Cincinnati Union Terminal Building	621-5040
CHARLES E. KOEHLER, District Sales Manager	
Cleveland, O. (44115) — 715 E. Prospect Ave.	621-3430
R. A. O'BRIEN, District Sales Manager	
Detroit, Mich. (48226) — 1352 Book Building	965-0323
ROBERT J. MILLER, District Sales Manager	965-0324
Indianapolis, Ind. (46205) — 1103 East 28th Street	923-2511
M. G. PRUETT, District Sales Manager	
T. R. WING, Sales Representative	
Milwaukee, Wis. (53203) — 231 West Wisconsin Ave.	271-6792
A. J. (GUS) SCHUMACHER, District Sales Manager	
KENNETH C. SCHAEFER, Sales Representative	
Minneapolis, Minn. (55402) — 1025 Soo Line Building	336-3575
MARVIN D. HUNSAKER, JR., District Sales Manager	
J. DON RICHARDSON, Sales Representative	
Nashville, Tenn. (37203) — Room 1310, 1808 West End Ave.	255-4917
H. K. COLEMAN, District Sales Manager	
New Albany, Ind. (47150) — 201 Culbertson Ave.	585-3389
GENE P. ALOISIO, District Sales Manager	
L. L. CRAWFORD, Assistant District Sales Manager	
New York, N. Y. (10036) — 516 Fifth Avenue	697-8058
ARTHUR VON TOBEL, District Sales Manager	697-8059
J. G. TIERNEY, Sales Representative	
Orlando, Fla. (32801) — 313 Rutland Building	422-4720
ALBERT L. BONE, District Sales Manager	
Pittsburgh, Pa. (15222) — 801 Arrott Building	281-2496
J. A. MARTIN, District Sales Manager	
F. A. LENTZ, Sales Representative	
Stevens Point, Wis. (54481) —	
JAMES BOSTICK, Sales Representative	

MONON SERVICE BETWEEN CHICAGO and LOUISVILLE



DAILY SERVICE TO INDIANA'S FINE UNIVERSITIES

In order to provide the best transportation service possible, Monon had the marketing department of the graduate school of one of the Midwest's leading universities conduct a survey on our passenger service. Continuing to comply with the survey results, we have maintained our schedule for the utmost convenience of our passengers.

EFFECTIVE APRIL 25, 1965

Passenger Train Schedules

Schedules herein are subject to change without notice. The Monon Railroad will not be responsible for inconvenience, delay or damage resulting from delayed trains or failure to make connections. Schedules shown are STANDARD TIME.

MONON FREIGHT SERVICE

INDIANAPOLIS LINE (freight only)

Miles	Stations	Miles	Stations
6.6	Chicago, Ill.	98.6	Monticello
20.7	Englewood	107.9	Pittsburgh
25.5	Hammond, Ind.	111.0	Delphi
29.0	Maynard	115.8	Harley
33.5	Dyer	120.1	Ockley
39.5	St. John	125.6	Rossville
44.8	Cedar Lake	136.0	Frankfort
52.6	Lowell	142.2	Cyclone
54.1	Shelby	146.9	Kirklin
55.5	Thayer	151.5	Terhune
62.2	Rose Lawn	155.4	Sheridan
65.8	Fair Oaks	159.9	Horton
68.1	Parr	163.4	Westfield
73.0	Surrey	167.8	Carmel
77.0	Rensselaer	172.4	Nora
88.4	Pleasant Ridge	175.3	Broad Ripple
93.8	Monon	178.5	Boulevard Station
	Guernsey	183.5	Indianapolis, Ind.

MIDLAND BRANCH (freight only)

Miles	Stations	Miles	Stations
0	Wallace Junction	27.7	Clay City
12.9	Jordan	37.5	Tamplin
16.0	Hoffman Spur	42.0	Midland
19.1	Patrickburg	43.1	Vicksburg
		47.1	Victoria

MICHIGAN CITY BRANCH (freight only)

Miles	Stations	Miles	Stations
59.6	Michigan City	37.7	So. Wanatah
56.0	Coleman	31.6	La Crosse
51.1	Otis	28.1	Wilders
47.1	Westville	23.3	San Pierre
45.0	Alida	15.2	Medaryville
43.1	Haskells	8.6	Francesville
39.4	Wanatah	0.	Monon

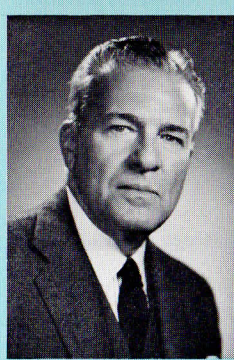
FRENCH LICK BRANCH (freight only)

Miles	Stations	Miles	Stations
0	Orleans	16.6	West Baden
7.6	Paoli	17.7	French Lick

FOR FAST, DEPENDABLE FREIGHT SERVICE SHIP **MONON**

Modernization, up-grading of equipment and property promises lower shipping and handling costs. Modern service includes:

- Fleet of New ALCO DIESEL LOCOMOTIVES — 2,750 H.P. Each — Biggest motive power in U.S.A. High speed, fast turnaround, "Unitized" trains.
- New IBM COMPUTER SYSTEM . . . Complete programming and tracing reports on every shipment.
- Fleet of New "BIG JOHN" HOPPER CARS . . . Each carries 100-plus tons of bulk payload. Extra capacity pays off in substantial savings to shippers.
- Fastest, shortest, strongest link between traffic-rich Ohio River and booming industrial complex at foot of Lake Michigan.



TO OUR CUSTOMERS:

Today you will find in effect the schedules, service and modernized equipment that you requested on the train. This is just another step of a long range plan to serve you, our customer, and to make your trip the most comfortable, enjoyable transportation available between the points served by the Monon.

Look to the new Monon for further innovations in the future.

W. C. Colman
Chairman of the Board and President

NEW MONON PASSENGER SPECIALS

Sandwiches, coffee and soft drinks served between Bloomington and Chicago.

Our faster schedule will allow you 4½ hours in Chicago for business, sports events or sightseeing.

The "Thoroughbred" (northbound) will make more convenient connections with transcontinental trains at Chicago to the West Coast.

Passengers will have a better choice of trains returning to Chicago for connections with Monon No. 5 (southbound) to Indiana points and Louisville.

The "Thoroughbred" (southbound) connects with L & N No. 1 at Louisville for following Southern Points: Nashville, Birmingham, Montgomery and connections for Mobile, Biloxi, and New Orleans.

INDUSTRIAL SERVICE

The Monon serves many communities in the heart of Indiana that offer exceptional opportunities for industrial expansion. Our Industrial Department

is ready at all times to assist in such matters. Address inquiries to: Manager, Real Estate and Industrial Development, Lafayette, Indiana.

SAVE TRAVEL DOLLARS WITH MONON FAMILY PLAN AND GROUP ECONOMY PLAN FARES

FAMILY FARE PLAN

Family tickets for COACH, round-trip— Example: One parent pays regular round-trip fare, the other parent and all family members age 12 thru 21 pay only one-way fare. Children under 12 pay ½ of one-way fare. Children under five free.

GROUP ECONOMY PLAN

3 or more adults traveling together in Coaches for round-trip can save 25% under regular fares, where distance of one-way travel is 100 miles or more.

SPECIAL PARTY EXCURSION FARES CAN BE ARRANGED VISIT BEAUTIFUL FRENCH LICK VIA MONON

for further information
PLEASE CONSULT TICKET AGENT OR PASSENGER DEPT.



between
CHICAGO
LAFAYETTE
BLOOMINGTON and LOUISVILLE

Read Down		Read Up	
The Thorough-Bred 5 Daily	Distance from Chicago	STATIONS All Schedules are CENTRAL STANDARD TIME (except New Albany, Ind. and Louisville, Ky.)	The Thorough-Bred 6 Daily
PM			PM
5:25		Lv Chicago, Ill., Dearborn Station	Ar 1:05
5:40	6.6	Lv Englewood .63rd & Wallace Sts.	Lv 12:50
6:08	20.7	Lv Hammond, Ind. Calumet River	Lv 12:20
	29.0	Lv Dyer	Lv
	33.5	Lv St. John	Lv
	39.5	Lv Cedar Lake . . . Cedar Lake	Lv
6:38	44.8	Lv Lowell . . . Cedar Creek	Lv 11:44
	52.6	Lv Shelby . . . Kankakee River	Lv
	54.1	Lv Thayer	Lv
	56.5	Lv Rose Lawn	Lv
	62.2	Lv Fair Oaks	Lv
	65.8	Lv Parr . . . Little Iroquois	Lv
7:07	73.0	Lv Rensselaer . . . Iroquois River	Lv 11:15
7:26	88.4	Lv Monon . . . Monon Creek	Lv 11:00
	95.8	Lv Reynolds	Lv
	102.1	Lv Chalmers	Lv
	106.2	Lv Brookston	Lv
	112.9	Lv Battle Ground	Lv
8:13	120.0	Lv . . . Tippecanoe Battlefield	Lv
	129.5	Lv Lafayette . . . Wabash River	Lv 10:20
	132.9	Lv South Raubs	Lv
	137.0	Lv Romney . . . Wea Creek	Lv
	143.5	Lv Linden	Lv
8:48	147.3	Lv Manchester	Lv
		Lv Crawfordsville	Lv 9:43
		Lv . . . Turkey Run State Park	Lv
	148.4	Lv Ames . . . Sugar Creek	Lv
	157.8	Lv Ladoga . . . Raccoon Creek	Lv
	162.2	Lv Roachdale	Lv
	168.7	Lv Bainbridge	Lv
9:21	177.8	Lv Greencastle . . . Walnut Creek	Lv 9:05
	180.0	Lv Limesdale	Lv
	183.0	Lv Putnamville	Lv
	189.2	Lv Cloverdale	Lv
	194.0	Lv Wallace Junction . . . Eel River	Lv
	203.9	Lv Gosport	Lv
	213.1	Lv Ellettsville	Lv
10:15	220.5	Lv . . . McCormick Creek State Park	Lv
		Lv Bloomington	Lv 8:13
		Lv . . . Brown County State Park	Lv
	235.4	Lv Guthrie	Lv
10:56	245.8	Lv Bedford . . . White River	Lv 7:31
11:09	255.3	Lv Mitchell . Spring Mill State Park	Lv 7:15
11:20	261.5	Ar Orleans	Lv 7:05
		French Lick (See Note)	
	271.8	Lv Campbellsburg	Lv
11:42	282.1	Lv Salem . . . Blue River	Lv 6:41
	290.2	Lv Farrabee	Lv
	293.4	Lv Pekin . . . Blue River	Lv
	299.5	Lv Borden . . . Silver Creek	Lv
	315.6	Lv Vernia	Lv
1:30	317.5	Lv New Albany, Ind., (E.S.T.)	Lv 6:58
		Lv . . . Ohio River	Lv
2:10	324.1	Ar Louisville, Ky., (E.S.T.)	Lv 6:30
		Union Station	Lv
AM			AM

Note — Taxi Service Available between Orleans and French Lick. Notify Conductor. Reclining Seats and Air-Conditioned Coaches Regularly Assigned To All Trains.