

# *The Challenger*

CHICAGO · SAN FRANCISCO



Popular Economy Train  
of the West



NORTH WESTERN  
UNION PACIFIC  
SOUTHERN PACIFIC

# *The Challenger*

CHICAGO · SAN FRANCISCO



Popular Economy Train  
of the West



NORTH WESTERN  
UNION PACIFIC  
SOUTHERN PACIFIC



*There's comfort - Real Comfort in a Challenger Sleeping Car*

The air is clean and fresh in the air-conditioned, smooth-riding Challenger Sleeping Cars. Berths are roomy and are "made up" with crisp linens, warm blankets, and comfortable mattresses. In the daytime, passengers relax while reading, playing cards, or just watching the passing panoramas. Accommodations on the Challenger Sleeping Cars cost about half Standard Pullman rates, and there is a big saving in rail fare.

# A Little buys a Lot - on the Challenger

**P**EOPLE are quick to recognize real value. The great popularity of Challenger train service is due to the fact that it offers so much at so little cost.

Patrons of the Challenger appreciate its many unusual comforts and services and are enthusiastic in their praise. They have found the Challenger offers the ideal way to travel in comfort and safety at small cost.



"Especially do I wish to compliment the pleasant young nurse who cared for the needs and wants of everyone on the train, paying particular attention to mothers with young children, and to elderly persons."

Mexico, Missouri

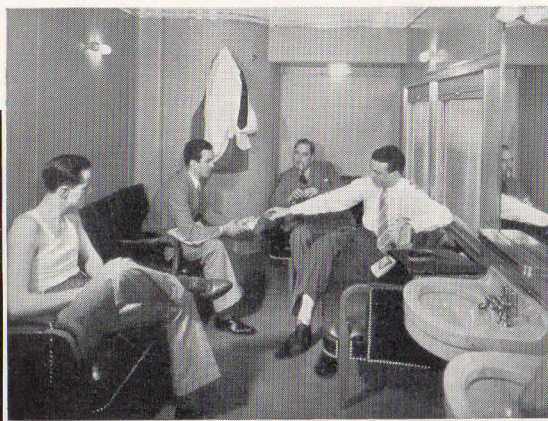
"Anyone has to travel on The Challenger to appreciate the wonderful service that is rendered to the patrons of the Union Pacific Railroad, not only the low priced meals, but the stewardess service . . . services that are not soon forgotten."

Hazelton, Idaho

Each Registered Nurse-Stewardess is a hospital graduate.

Preparing food formulas for babies is one of the many services performed by the Stewardess.

Women appreciate the roominess and modern fittings in Challenger Rest Rooms.



The Men's Wash Rooms are spacious and completely appointed.

"The porters kept the coaches and dressing rooms immaculately clean . . . The train men were courteous and concerned with the welfare of each individual under their supervision . . . The food was delicious; and courteous, attentive waiters made a most happy occasion each meal time."

Denver, Colorado



"The meals were as delicious as any I have ever eaten. They were well-cooked, well seasoned and served by such expert waiters that each meal was more than thoroughly enjoyed."

Bar Harbor, Maine

"To see a smoothly functioning organization is a joy to me—I was thrilled by the Union Pacific . . . And, may I compliment you on your wise program of the use of thoroughly modern equipment."

Tacoma, Washington



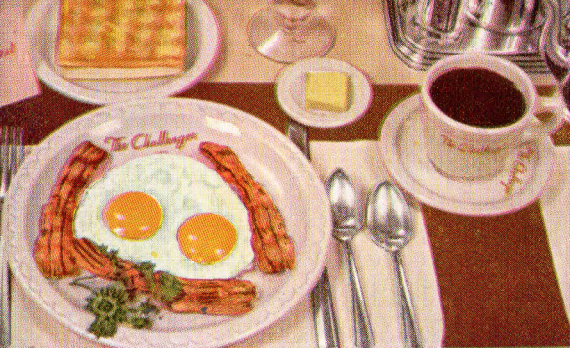
*The hours pass pleasantly in the **Challenger** Lounge Car*

Here, in a smart Lounge Car with the furnishings of a city club, is the social center for Sleeping Car passengers on the Challenger. It is a place where travelers from far-distant points mingle, and conversation, card playing or reading can be enjoyed under delightful conditions. From deep-cushioned seats and divans, passengers view the dramatic scenic show that is unfolded as the Challenger speeds through the West.



*For real economy - the Challenger coaches*

Here's the biggest bargain in transcontinental train travel. Money-saving rail fare plus enjoyable comfort. Challenger Coaches are air-conditioned and modern in all appointments. Their equipment includes deep-cushioned seats that can be reclined for sleeping, and soft, blue night lights. Pillows are free. A porter is at your beck and call, and a Registered Nurse-Stewardess looks after the well-being of all passengers. Rest rooms are unusually spacious. Women and children may, if they wish, ride in Coaches provided for their exclusive use.



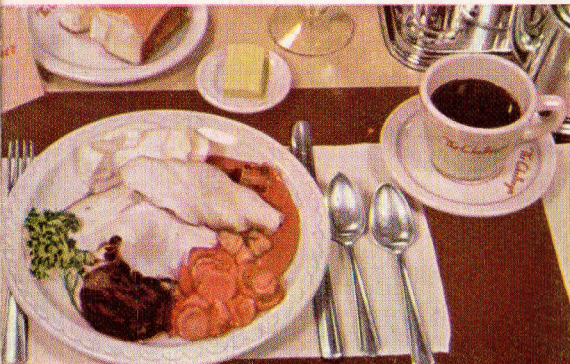
## Breakfast • 25¢

A popular 25c Challenger breakfast includes orange juice, bacon and eggs (fried, boiled or scrambled)—toast—coffee.



## Luncheon • 30¢

A typical luncheon, includes meat loaf with tomato sauce, browned potato, creamed celery, hot rolls, milk and chocolate pudding.



## Dinner • 35¢

How's this for a dinner? Turkey with cranberry jelly, candied sweet potato—corn en casserole—hot rolls—coffee, and ice cream.



A corner of the attractive Dining Car.

# The Challenger offers Smart Comfort plus Low Cost

This famous train makes it possible for you to save money while enjoying the speed, safety and air-conditioned comfort of modern rail travel.

You'll be pleasantly surprised at the homelike comfort of the Challenger . . . and amazed at its economies. In addition to the many other money-saving features, you can enjoy three wholesome meals a day for only 90c. Typical meal selections from the Challenger menu are shown on this page . . . It's smart to travel "the Challenger way."

Westbound  
Read Down  
10:30 PM  
10:40 AM  
8:25 AM

### SCHEDULE — DAILY

		Eastbound
		Read Up
Lv. . . . . Chicago (C. & N. W.) . . . . .	Ar.	8:45 AM
Lv. . . . . Omaha (Un. Pac.) . . . . .	Ar.	8:00 PM
Ar. . . . . San Francisco (Sou. Pac.) . . . . .	Lv.	8:00 PM

*How Little  
it Costs*

BETWEEN  
CHICAGO

AND

SAN FRANCISCO

ONE WAY  
IN COACHES ..... \$39.50

3 MEALS  
FIRST DAY ..... .90

3 MEALS  
SECOND DAY ..... .90

BREAKFAST  
THIRD DAY ..... .25

*Total Cost* \$41.55

**NORTH WESTERN • UNION PACIFIC  
SOUTHERN PACIFIC**

The Direct Route to the San Francisco World's Fair

Effective April 1, 1941 Challenger meal prices are breakfast 35c, luncheon 40c, dinner 50c.