

### LOW ROUND TRIP FARES EAST—DAILY

Agents of the S. P. & S. Ry. will sell round trip tickets at very low figures, arrange itineraries, sleeping car accommodations, etc., for travel east on the fast, air conditioned, premier trains Empire Builder and North Coast Limited Portland to Spokane, St. Paul and Chicago. Please consult them for details.

### SEASIDE—TILLAMOOK LINE

Round Trip	One Way	Daily	Miles	OREGON MOTOR STAGES	Daily
		10.45	0	Lv. Seaside.....Ar	2.50
\$1.25	\$.80	11.50	31	Ar. Nehalem.....Lv	1.55
1.35	.85	11.55	33	Ar. Wheeler.....Lv	1.50
1.60	1.00	12.07	39	Ar. Manhattan.....Lv	1.35
1.65	1.05	12.13	41	Ar. Rockaway.....Lv	1.33
1.85	1.15	12.23	46	Ar. Garibaldi.....Lv	1.23
2.00	1.25	12.31	50	Ar. Bay City.....Lv	1.15
2.30	1.45	12.45	57	Ar. Tillamook.....Lv	1.15
3.10	1.95	2.10	78	Ar. Hebo.....Lv	1.35
4.30	2.70	2.55	103	Ar. Valley Jet.....Lv	10.50

### JAMIESON STAGES

Tuesday, Thursday and Saturday			Monday and Friday		
2.30	Lv. Portland.....Ar	10.15			
3.05	Lv. Scappoose.....Lv	9.40	8.15	Lv. Elsie.....Ar	x4.00
3.30	Lv. Chapman.....Lv	9.20			
3.55	Lv. Wilark, Camp 8.....Lv	9.00	8.00	Lv. Van Vleet Camp.....Ar	x3.45
4.05	Ar. Pittsburg.....Lv	8.50			
4.25	Ar. Mist.....Lv	8.30	8.22	Lv. Valley Tavern.....Ar	x3.20
4.35	Ar. Birkenfield.....Lv	8.20	8.27	Lv. Vinemapple.....Ar	3.15
4.55	Ar. Jewell.....Lv	8.00	8.32	Lv. Tidport Cmp.....Ar	3.10
			8.45	Lv. Jewell.....Ar	2.55
25 10	Ar. Tidport Camp.....Lv	7.47	9.00	Lv. Tidewater Cmp.....Ar	2.40
25 20	Ar. Valley Tavern.....Lv	7.37	9.15	Lv. Olney.....Ar	2.20
25 30	Ar. Van Vleet Camp.....Lv	7.15	9.35	Ar. Astoria.....Lv	2.00
25 30	Lv. Elsie.....Lv	7.30			

z When there are passengers from Jewell or points east.  
x When there are passengers from Jewell or points west.

**Terminals:** Portland, Glenwood Hotel, 7 N.W. 6th Ave.; Astoria, Astoria Hotel.

Read left hand columns down      Read right hand columns up  
Light face figures A.M., Dark face figures P.M. time.

### North Beach Stage Schedule

Ferry connecting at Megler for Chinook, Ilwaco, Seaview and Long Beach leaves 14th Street, Astoria, daily at 7:30 a.m., \*noon Sun. \*1:30 p.m. week days and 5:00 p.m. Arrives at 14th Street, Astoria, from same points daily at 8:20 a.m., \*11:25 a.m., and 5:55 p.m. \*Bus meets Train No. 21 at S. P. & S. Ry. Station. On all other trips transfer between Bus and Ferry is made at Megler.

Ocean Park trips made on call.

Fares: McGowan, A35c, B70c; Chinook, A45c, B85c; Ilwaco, A65c, B\$1.15; Seaview and Long Beach, A75c, B\$1.25.

A, one way; B, round trip.

### CANNON BEACH

This wonderful and beautiful ocean resort lies just south of Tillamook Head, 10 miles from Seaside, over an unusually interesting highway, with regular stage service. Hotels and restaurants are open at all seasons. A visit will reward you. Stage connections on page 10.

### STAGE STATIONS

**Portland,** Central Stage Terminal, S.W. Taylor St., between 5th and 6th Aves. Phone ATwater 5171.

**Astoria,** 14th and Duane Sts., Astoria Hotel. Phone 550. Portland stages when signaled also stop on Commercial Street adjacent to S. P. & S. Ry. Station, 20th and Commercial Streets. Phone 113.

**Clatskanie,** Tourist Restaurant. Phone 1163.

**Forest Grove,** Eastwood's Confectionery, First Ave. and Main St. Phone 63J.

**Hillsboro,** Oregon Electric Ry. Station, 3rd and Washington. Phone 1941Y.

**Houlton,** S. P. & S. Ry. Station. Phone 58.

**Rainier,** S. P. & S. Ry. Station. Phone 342.

**Scappoose,** Imperial Restaurant. Phone 42.

**Seaside,** S. P. & S. Stage Station—Benny's Cafe, Broadway. Phone 88.

**St. Helens,** S. P. & S. T. Co. Station, Columbia Street. Phone 246.

**Vernonia,** Cozy Confectionery, 717 Bridge Street. Phone 582.

**Warrenton,** Wilson's Drug Store. Phone 113.

**Westport,** R. J. Cowan Store. Phone 23.

## STAGE AND BOAT CONNECTIONS

To Points reached from S. P. & S. Rail and Stage Stations

This list is prepared from best data obtainable, but neither service nor fares are guaranteed.

**Altoona Wash.,** via Astoria, 10 miles, boats 8:00 a.m. and 2:00 p.m. daily except Sundays, fare 50c.

**Arch Cape, Cannon Beach, Ore.,** auto stage, via Seaside, \$2.00; round-trip \$3.50. Daily on the tide, 17 miles.

**Bay City, Ore.,** via Seaside, see Schedule, page 9.

**Brookfield, Wash.,** via Astoria, 15 miles, boats, 8:00 a.m. and 2:00 p.m. daily except Sundays; fare 50c.

**Cannon Beach, Ore.,** via Seaside, 10 miles, stage leaves Seaside 12:30 p.m. daily (Meets other trains and buses for 2 or more passengers upon advance notice). Leave Cannon Beach 11:00 a.m., daily. Fare 80c, round-trip \$1.50.

**Cathlamet, Wash.,** via Westport, leave Cathlamet 7:00, 8:45, 10:30 a.m., 1:15, 4:00, 6:00 p.m. daily. Leave Westport 8:00, 9:30 and 11:15 a.m., 2:00 and 5:00 p.m. daily. Time either way, 35 mins.; fare 50c. Via Astoria, boat leaves 2:00 p.m., except Sundays and holidays; fare 50c.

**Chinook, Wash.,** via Astoria, ferry, stage; see Schedule, page 9.

**Deep River, Wash.,** via Astoria, 10 miles, ferry to Knappton.

**Elk Creek, Ore.,** via Seaside; see Cannon Beach above.

**Fort Canby, Wash.,** via Astoria, ferry and stage to Ilwaco, Wash.

**Fort Stevens, Ore.,** via Warrenton, 4 miles, special auto; stages, page 3.

**Frankfort, Wash.,** via Astoria, 10 miles, boats, no regular schedule; fare 75c.

**Garibaldi, Ore.,** via Seaside, see Schedule, page 9.

**Grays River, Wash.,** via Astoria, 12 miles, ferry to Knappton.

**Hamlet, Ore.,** via Seaside, 22 miles, 8:30 a.m., auto daily except Sunday; fare \$1.00, round-trip \$2.00.

**Ilwaco, Wash.,** via Astoria, ferry and stage; see Schedule, page 9.

**Jewell, Ore.** Stage schedules, pages 2 and 9.

**Kalama, Wash.,** ferry leaves Goble, 10:20 a.m. and 7:55 p.m.

**Kelso, Wash.,** via Rainier, Longview, City Bus every 2 hours, 8:20 a.m. to 7:45 p.m.

**Knappton, Wash.,** via Astoria, 7 miles, ferry, 7:00 a.m., 10:30 a.m., 2:00 p.m. and 4:00 p.m., daily; fare 25c.

**La Dee Logging Co., Ore.,** via Seaside. No stage service.

**Long Beach, Wash.,** via Astoria, ferry and stage; see Schedule, page 9.

**Longview, Wash.,** via Rainier, Bus 30c. Leave Rainier every two hours from 8:20 a.m. to 7:40 p.m.

**Manhattan, Ore.,** via Seaside, see Schedule, page 9.

**Markum's Camp, Ore.,** see Schedule, page 9.

**McGowan, Wash.,** via Astoria and ferry; see Schedule, page 9.

**Megler, Wash.,** via Astoria and ferry; see page 9.

**Naselle, Wash.,** via Astoria, 14 miles, ferry to Knappton.

**Nehalem, Ore.,** via Seaside, see Schedule, page 9.

**Ocean Park, Wash.,** via Astoria, ferry and stage; see Schedule, page 9.

**Olney, Ore.,** via Astoria, 10 miles. Jamieson Stages, page 9.

**Oneida, Wash.,** via Astoria, 13 miles, ferry to Knappton.

**Pillar Rock, Wash.,** via Astoria, 18 miles, boat 8:00 a.m. daily except Sundays, fare 50c!

**Rockaway, Ore.,** via Seaside, see Schedule, page 9.

**Rosburg, Wash.,** via Astoria, 16 miles, ferry to Knappton.

**Ryderwood, Wash.,** via bus, Rainier to Longview, thence by motor stages of the Northwest Transit Co.

**Seaview, Wash.,** via Astoria, ferry and stage; see Schedule, page 9.

**Tidewater, Ore.,** via Astoria, 21 miles. Jamieson Stages, page 9.

**Tideport Camp, Ore.,** Jamieson Stages, page 9.

**Tillamook, Ore.,** via Seaside, see Schedule, page 9.

**Van Vleet Camp, Ore.,** Jamieson Stages, page 9.

‡ Ferry leaves Astoria 7:00 and 10:30 a.m., 2:00 and 4:00 p.m. Leaves Knappton 8:00 and 11:30 a.m., 3:00 and 5:00 p.m. No stage service beyond Knappton.

### FAST EXPRESS BY STAGE

The S.P. & S. Transportation Co. handles package express shipments on its stages scheduled on the reverse side, providing quick, frequent, convenient service at reduced rates. See page 3.

### TICKETS INTERCHANGEABLE

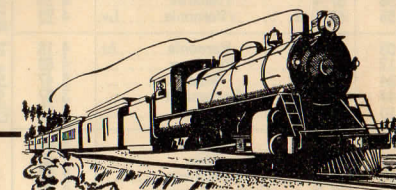
One-way, and regular local round-trip tickets will be honored in the direction in which they read on trains or stages between points common to both, on Portland-Astoria-Seaside Line.

REISSUE, MAY 20, 1939

## PORTLAND · ASTORIA · SEASIDE LINES

### STAGES AND TRAINS

Along the lower Columbia River

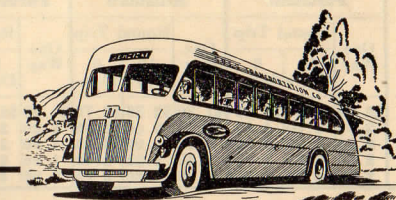


## Train and Stage SCHEDULES

BETWEEN

**PORTLAND, ST. HELENS, RAINIER  
ASTORIA, GEARHART, SEASIDE**

**TRAVEL IN COMFORT**  
Standard Trains • Fast, Comfortable Stages



### STATIONS

**Portland** TRAINS—Union Station, Foot of Sixth Ave. Telephone BRdwy 3421. STAGES, Central Bus Terminal S.W. Taylor St., 5th & 6th Aves. Phone ATwater 5171.

**Astoria** TRAINS—Station, 20th and Commercial Streets (Stages stop on Commercial Street), Phone 113. STAGES—14th and Duane Sts., Astoria Hotel, Phone 550. Train Rail Baggage checked only at Railway Station.

**Seaside** TRAINS—Railway Station, Phone 45. STAGES—Benny's Cafe, Broadway, Phone 88.

All time shown in these tables is Pacific Standard Time.

The issuing carriers are not responsible for errors in time tables, inconvenience or damage from delayed trains or stages, or failure to make connections. Schedules are subject to change without notice. Former issues should be destroyed.

MOTOR STAGE SERVICE

Between PORTLAND and SEASIDE Via

FOREST GROVE, VERNONIA, BIRKENFELD, MIST and JEWELL

Table with columns for Westbound From Portland, Spokane, Portland & Seattle Transportation Co., Eastbound To Portland, Read Up, Miles, Pacific Time, and various stage names like No. 81, No. 80, No. 106, No. 105.

Note—Restricted Sale of Tickets Tickets will not be sold or express carried locally between any points in the zone Portland to Sunset; or between Portland, Sylvan and Beaverton on the one hand and Irreharne, Vernonia and Pittsburg on the other hand; or between any points Elsie to Seaside.

Choice of Routes on Round-trip Tickets Round trip tickets between Portland and Seaside will be honored at option of passengers in both directions, either via the route through Vernonia or via the Columbia River route through Astoria, or in one direction via one route and the opposite direction via the other route; such tickets will be honored on stages or trains, via the Columbia River route.



SPOKANE, PORTLAND & SEATTLE TRANSPORTATION CO.

MOTOR STAGES

WESTBOUND—From Portland, Read Down

Light face figures denote A. M. time. Dark Face P. M. time.

EASTBOUND—To Portland, Read Up

Main table with columns for No. 59 Daily, No. 61 Sun, No. 57 Daily, No. 9 Daily, No. 53 Daily, No. 5 Daily, No. 51 ExSun, No. 3 Daily, Miles, Pacific Time, and various stage names like Portland, Astoria, Seaside, etc.

FAST STAGE EXPRESS RATES table showing rates for 1 to 15, 16 to 30, 31 to 45, 46 to 60, 61 to 100 pounds.

C.O.D. Charges for collecting and remitting—25c for sums not over \$10.00, and 5c for each additional \$10.00 or fraction thereof.

Express shipments may be left and called for at stations shown at bottom of page 9; at other points handled directly with stage drivers



No passengers handled locally, Portland to Linnton, or Linnton to Portland (Stages). Bus Connection from Longview made at highway junction for points west. Ex. Sun.—Except Sunday. Sun.—Sunday. Regular intrastate tickets between common points are honored on stages or trains at option of passenger.

STAGE TICKET FARES

Table showing fare details between Portland, Hillboro, Forest Grove, Vernonia, Jewell, and Seaside, including one way, round trip, and multi-day options.

BETWEEN ASTORIA, WARRENTON AND FT. STEVENS

Table showing fares between Astoria, Warrenton, and Ft. Stevens, including routes and times.

DAILY ROUND TRIP TRAIN AND STAGE FARES

Table showing daily round trip fares between Portland, Astoria, St. Helens, Rainier, and Seaside.

Stop-overs may be made at intermediate points on round trip tickets.

"Sat." Saturday; "Sun." Sunday, "Ex." Except. Light face figures denote A.M. time; bold face, P.M. time.

x, z—Fares shown are for city center St. Helens; fares at St. Helens railway station and Houlton stage station are lower—x, 5 cents; z, 10 cents. Stop-overs are allowed at intermediate stations. Tickets will be honored on stages or trains at option of passengers, between points which are common to both stage and train lines.



TRAINS

Westbound—Read Down

Eastbound Read Up

No. 23 Daily	No. 21 Daily	Miles	May 20, 1939 Pacific Time	No. 22 Daily	No. 24 Daily
<b>UNION STATION</b>					
6 10	8 00	0 0	Lv. . . . . Portland . . . . . tAr.	11 30	9 10
f 6 27	8 20	7 3	Linnton . . . . . t	11 10	f 8 49
f 6 38	f 8 30	12 6	Holbrook . . . . .	f 11 01	f 8 38
f 6 53	8 43	19 9	Seapoose . . . . . t	10 48	f 8 27
f 7 02	f 8 58	24 3	Warren . . . . .	f 10 41	f 8 19
7 10	8 57	27 6	St. Helens (Sta.) . . . . . t	10 36	8 12
f 7 14	f 9 01	30 0	Columbia City . . . . .	f 10 30	f 8 07
f 7 19	f 9 09	33 2	Deer Island . . . . .	f 10 26	f 8 02
f 7 25	f 9 16	37 2	Charlton . . . . .	f 10 19	f 7 56
f 7 29	9 20	39 4	Goble . . . . .	10 15	f 7 52
f 7 33	f 9 26	42 2	Prescott . . . . .	f 10 09	f 7 48
7 40	9 34	45 8	Ar. . . . . Rainier . . . . . tLv.	10 04	7 43
8 00	10 35		Ar. . . . . Longview . . . . . Lv.	8 00	7 20
7 20	8 00		Lv. . . . . By Direct Bus 30c . . . . . Ar.	10 35	8 00
7 40	9 34	45 8	Lv. . . . . Rainier . . . . . tAr.	10 04	7 43
f 7 42	f 9 36	47 2	West Rainier . . . . .	f 10 00	f 7 38
f 8 03	9 55	55 8	Mayer . . . . .	9 45	f 7 23
f 8 07	/10 00	58 0	Loooda . . . . .	f 9 40	f 7 18
f 8 12	10 04	59 3	Quincy . . . . .	9 38	f 7 16
8 20	10 10	62 2	Clatskanie . . . . . t	9 32	7 10
f 8 30	/10 19	66 6	Marshland . . . . .	f 9 27	f 7 00
	/10 22	68 5	Woodson . . . . .		
f 8 36	/10 25	69 8	Kerry . . . . .	f 9 17	f 6 54
f 8 39	10 29	71 2	Westport . . . . .	9 13	f 6 51
8 43	10 34	73 5	Wauna . . . . .	9 08	f 6 46
f 8 48	/10 40	76 8	Bradwood . . . . .	f 9 01	f 6 39
f 8 52	/10 45	78 4	Clifton . . . . .	f 8 58	f 6 36
	/10 50	81 7	Aldrich Point . . . . .		
f 8 59	/10 53	83 3	Brownsmead . . . . .	f 8 46	f 6 26
	/10 59	84 9	Blind Slough . . . . .	f 8 43	f 6 23
f 9 06	11 04	86 5	Knappa . . . . .	8 40	f 6 20
	/11 07	88 5	Ivy . . . . .	f 8 35	
f 9 13	11 12	90 2	Svensen . . . . .	8 32	f 6 12
f 9 23	/11 23	95 4	Van Dusen . . . . .	f 8 22	f 6 02
f 9 26	/11 26	96 9	Tongue Point . . . . .	f 8 16	f 5 56
f 9 35	11 35	99 7	Ar. . . . . Astoria . . . . . tLv.	8 10	5 50
9 40	11 40	99 7	Lv. . . . . Astoria . . . . . tAr.	8 05	5 40
		100 3	11th Street, Astoria . . . . .		
/10 00	11 59	105 6	Warrenton . . . . .	f 7 45	5 20
	/12 02	107 0	Skipanon . . . . .		
/10 07	/12 06	108 3	Camp Clatsop . . . . .	f 7 38	f 5 13
		109 7	Huston . . . . .		
/10 10	/12 09	110 3	Carnahan . . . . .	f 7 32	f 5 08
		111 4	Allendale . . . . .		
/10 15	/12 14	112 1	West . . . . .	f 7 29	f 5 04
		113 2	Dellmoor . . . . .		
/10 24	/12 22	115 7	Gearhart . . . . .	f 7 21	f 4 55
		116 7	Newanna . . . . .		
/10 27	/12 26	117 4	Surf . . . . .	f 7 16	f 4 51
10 30	12 30	118 0	Ar. . . . . Seaside . . . . . tLv.	7 15	4 50

REFERENCES

Light face figures denote A.M. time; bold face, P.M. time  
 f—Stops on signal. t—Telegraph office.  
 Ar.—Arrive. Lv.—Leave.



TRAIN EQUIPMENT

Trains Nos. 21, and 24, carry observation parlor cars and coaches between Portland, Astoria and Clatsop Beach points.

Train No. 23 carries parlor observation car Fridays, Saturdays and Sundays; No. 22, parlor observation car Saturdays, Sundays and Mondays; both trains, coaches daily.

**Meal Service:** Breakfast, Luncheon and Dinner are served daily in parlor cars of Trains 21 and 24. Dinner and Breakfast in parlor cars of Trains 23 and 22 on days operated. Club and a la carte prices are moderate. Coach passengers may use this meal service without paying parlor car seat charges during time of dining.

RESERVE SEAT COACH CHARGES  
 ON AND AFTER MAY 27, 1939

Between	Port-land	St. Helens	Rainier	Clats-kanie	Astoria
St. Helens . . . . .	\$ .15				
Rainier . . . . .	.15	\$ .15			
Clatskanie . . . . .	.20	.15	\$ .15		
Astoria . . . . .	.30	.25	.20	\$ .15	
Warrenton . . . . .	.30	.25	.20	.15	\$ .15
Gearhart . . . . .	.30	.30	.25	.20	.15
Seaside . . . . .	.30	.30	.25	.20	.15



SUMMER AT THE OCEAN

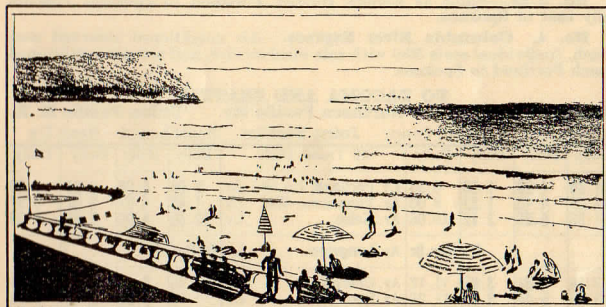
This is the premier Summer ocean beach resort of the Northwest.

After all, there is nothing quite so fine, refreshing and restful as the seashore. Here is a Pacific Ocean resort with convenient train and motor stage service, giving delightful, short trips along the shore of the wonderful Lower Columbia River via historic Astoria, with splendid scenery of mountains, forests and expanding waters.

Surrounded by evergreen forests and a background of mountains, Clatsop Beach has every facility to assure the pleasure and recreation of visitors—golf courses, fishing, mountain climbing, amusement places, sea foods, pure water, good hotels, restaurants, cottages and camps. Low round trip fares from Portland in effect on S. P. & S. trains and stages, shown on pages 2, 4 and 6; and schedules on pages 2, 3, 4 and 5.

Those who can spend a week-end or longer in its salt air are among the most fortunate. And this can be done at Clatsop Beach with little expense, for train and stage fares, lodgings, meals, amusements, etc.

Ten miles south of Seaside lies Cannon Beach, a wonderfully beautiful shore, skirted by forest, reached by regular stage service from Seaside on an unusually interesting highway. Here also are hotels, restaurants, camps and splendid bathing beach. For stage connections see pages 9 and 10.



ROUND TRIP FARES

PORTLAND To ASTORIA—CLATSOP BEACH  
 Pacific Ocean—Seaside—Gearhart

**WEEK END TICKETS, (Daily until Sept. 24) To Seaside, Gearhart Astoria, \$3.50, (1½¢ per mile) go Friday, Saturday or Sunday. Return by following Monday (and Wednesdays, May 31 and July 5). No stopovers.**

**TEN-DAY TICKETS, Gearhart \$4.65, Seaside \$4.75, Astoria \$4.00; on sale daily; return limit 10 days. Stopovers allowed.**

**FAMILY COMMUTATION TEN-RIDE TICKET \$17.50, (1½¢ per mile) on sale daily, limit three months. Good for purchaser and for members of family. No stopovers.**

**CIRCLE STAGE TRIP \$4.75, Portland to Seaside, going via Lower Columbia River route through Astoria, and returning via Wolf Creek Highway, Nehalem Valley, Forest Grove, etc., or the reverse. It offers a delightful tour, with a variety of river, mountain and pastoral scenery, and a visit at the ocean. Tickets on sale daily, good for 10 days, and stop-overs at all points**

**LOOP STAGE TRIPS to Seaside, on sale daily. Returning via Tillamook, \$5.70 ten day, and \$6.30 sixty day limit.**

These tickets honored on S.P. & S. trains or stages as desired by passengers

