

# CENTRAL VERMONT RAILWAY, INC.

(General Offices—St. Albans, Vt.)

R. C. Vaughan..... Chairman and President..... Montreal, Que.  
 J. A. Rogers..... General Manager..... St. Albans, Vt.  
 M. E. Barnes..... Assistant General Manager..... St. Albans, Vt.  
 S. C. Vaughan..... General Passenger Agent..... St. Albans, Vt.  
 W. J. Regan..... District Passenger Agent..... St. Albans, Vt.  
 W. A. Kember..... General Freight Agent..... Boston, Mass.  
 A. W. Manchester..... Asst. General Freight Agent..... St. Albans, Vt.

### PASSENGER AND FREIGHT REPRESENTATIVES

**Boston, (16) Mass.**  
 Passenger Department, 497 Boylston St., Phone Commonwealth 6-7300.  
 S. C. Vaughan, General Passenger Agent.  
 (10) Freight Department, 80 Federal St., Phone Hubbard 2-3810.  
 W. A. Kember, General Freight Agent.  
 M. P. Cunningham, General Agent.

**Buffalo, (3) N. Y.**  
 Passenger Department, 22 North Division St.  
 C. V. Howick, General Agent Passenger Dept.

**Burlington, Vt.**  
 Passenger Department, 137 St. Paul St., Phone 3610.  
 R. F. Thompson, City Ticket Agent.

**Chicago, (3) Ill.**  
 Passenger Department, 103 West Adams St.  
 A. M. Nolan, General Western Passenger Agent.

**Detroit, (26) Mich.**  
 Passenger Department, 1239 Washington Blvd.  
 R. C. Evans, General Agent.  
 Freight Department, 5-209 General Motors Bldg.  
 M. W. Simpson, General Agent, Phone Madison 7777.

**Montreal, Que.**  
 Passenger Dept., 384 St. James St. West, Phone Marquette 4731  
 P. Tanguay, General Agent  
 Freight Department, 301 Central Station, Phone Harbour 7626  
 W. P. O'Brien, General Agent

**New Haven, Conn.**  
 Freight Department, 39 Church St., Phone 8-1707  
 J. C. Burns, General Agent.

**New York, (20) N. Y. (Canadian National Railways)**  
 Passenger Department, 630 Fifth Avenue, Phone Circle 6-5620  
 A. P. Lait, General Eastern Passenger Agent.  
 (7) Freight Department, 233 Broadway, Phone Rector 2-2700.  
 H. H. Wilson, General Eastern Freight Agent.  
 C. H. Kent, Foreign Freight Agent.

**Philadelphia, (7) Pa.**  
 Passenger Dept., Suite 1142, Lincoln-Liberty Bldg., Broad & Chestnut Sta.  
 F. K. Moore, General Agent.  
 (2) Freight Department, 1420-1426 South Penn Square.  
 H. R. Fish, General Agent.

**Pittsburgh, (22) Pa.**  
 Passenger and Freight Department, 355 Fifth Ave.  
 J. E. Myers, General Agent, Passenger Dept.  
 O. K. Daly, General Agent, Freight Dept.

**St. Albans, Vt.**  
 Passenger Department, Phone 1120.  
 W. J. Regan, District Passenger Agent.

**Washington, (5) D. C.**  
 R. C. Curley, General Agent, 922, 15th St. N. W.

**Woonsocket, R. I.**  
 C. P. Nadeau, Traveling Passenger Agent, 60 Greene St.

### INFORMATION

Time-tables herein are subject to change without notice. They show the times trains and motor coaches should arrive at and depart from stations but their arrivals, departures, or connections at the times stated, are not guaranteed.

Time. Eastern Standard unless otherwise marked. Light-faced type denotes time from 12.01 a.m. (midnight) to 12.00 a.m. (noon). Heavy-faced type denotes time from 12.01 p.m. (noon) to 12.00 p.m. (midnight).

Stop overs will be allowed on regular ticket on notice to conductor at all stations where train on which passenger is traveling is scheduled to make regular stop.

Lost Articles inquire of Passenger Traffic Dept., St. Albans, Vt.

Customs. The law provides that residents of the United States taking back dutiable merchandise of any nature up to \$100.00 will not be granted free entry unless the trip outside the United States has been of forty-eight hours duration, or longer, also that only one exemption will be allowed within a period of thirty days, an additional \$300.00 exemption will be allowed when residents have been outside of the United States at least 12 days and a similar exemption has not been claimed within six months.

Immigration. Passengers enroute to Canada who intend to return to the United States, should be careful to carry with them documentary evidence of citizenship, such as birth certificates, naturalization certificates, etc., if American citizens. Non-citizen residents of the United States must be in possession of reentry permits to return. Otherwise they will be required to obtain passports and visas before being readmitted to this country.

### CUSTOMS AND IMMIGRATION

United States Customs Officers will examine all passengers and their hand baggage, and United States Immigration Officers will examine all passengers, entering the United States.

The Canadian Immigration and Customs Officers conduct similar examinations of all Passengers and baggage entering Canada.

To avoid delay and inconvenience, passengers are requested to co-operate by having their identification papers and hand baggage ready for inspection. It is necessary that passengers be with their baggage when it is examined.

This examination does not apply to checked baggage carried in the baggage car.

### NO PASSPORTS REQUIRED TO VISIT CANADA

Insofar as citizens of the United States are concerned they may enter and leave Canada as heretofore, without passports. Regulations do not require passports for United States citizens visiting Canada, although it is desirable that United States citizens have with them means of identification, such as birth certificates, naturalization papers, poll tax receipts or certificates from public officials who can certify American citizenship of the traveler.

# WHERE YOU CAN GO BY TRANS-CANADA AIR LINES Daily Service

### In Canada:

Sydney - Halifax - Yarmouth - Moncton - Saint John -  
 Montreal - Ottawa - Toronto - London - Windsor - North  
 Bay - Porquis - Kapuskasing - Sault Ste. Marie - Port  
 Arthur - Fort William - Winnipeg - Regina - Saskatoon -  
 Swift Current - Medicine Hat - Lethbridge - Calgary -  
 Edmonton - Vancouver - Victoria

### In United States:

New York - Boston - Cleveland - Detroit (Windsor) -  
 Chicago - Duluth - Sault Ste. Marie - Seattle

### Atlantic Services:

Hamilton, Bermuda - St. John's, Nfld. - Shannon, Ireland -  
 Glasgow (Prestwick), Scotland - London, England

For Information as to fares and schedules consult  
 Trans-Canada Air Lines or any Passenger  
 Representative of  
**CENTRAL VERMONT or CANADIAN NATIONAL RAILWAYS**

## CANADIAN NATIONAL HOTELS of Distinction

<b>CHATEAU LAURIER</b> Ottawa, Ontario	<b>The MACDONALD</b> Edmonton, Alberta
<b>The NOVA SCOTIAN</b> Halifax, Nova Scotia	<b>The BESSBOROUGH</b> Saskatoon, Saskatchewan
<b>PRINCE EDWARD HOTEL</b> Brandon, Manitoba	<b>PRINCE ARTHUR HOTEL</b> Port Arthur, Ontario
<b>The CHARLOTTETOWN</b> Charlottetown, P. E. I.	<b>The FORT GARRY</b> Winnipeg, Manitoba

### HOTEL VANCOUVER\*

Vancouver, British Columbia  
 \*Operated under the joint management of  
 CANADIAN NATIONAL RAILWAYS  
 and the  
 CANADIAN PACIFIC RAILWAY COMPANY

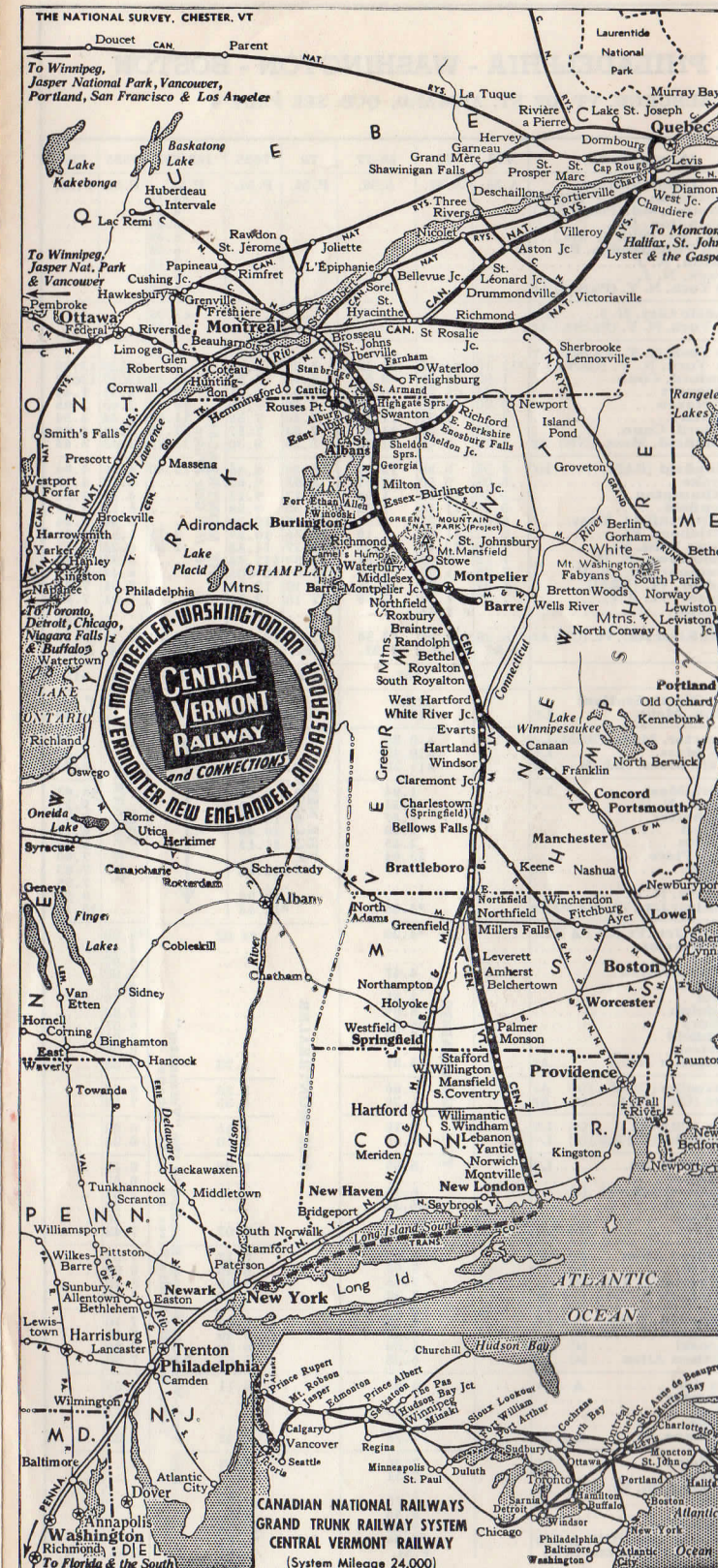
## SPEED YOUR PACKAGES

### by RAILWAY EXPRESS

Convenient, dependable through service from sender to receiver is provided by the Railway Express Agency, operating over the lines of this and other principal railroads of the United States.

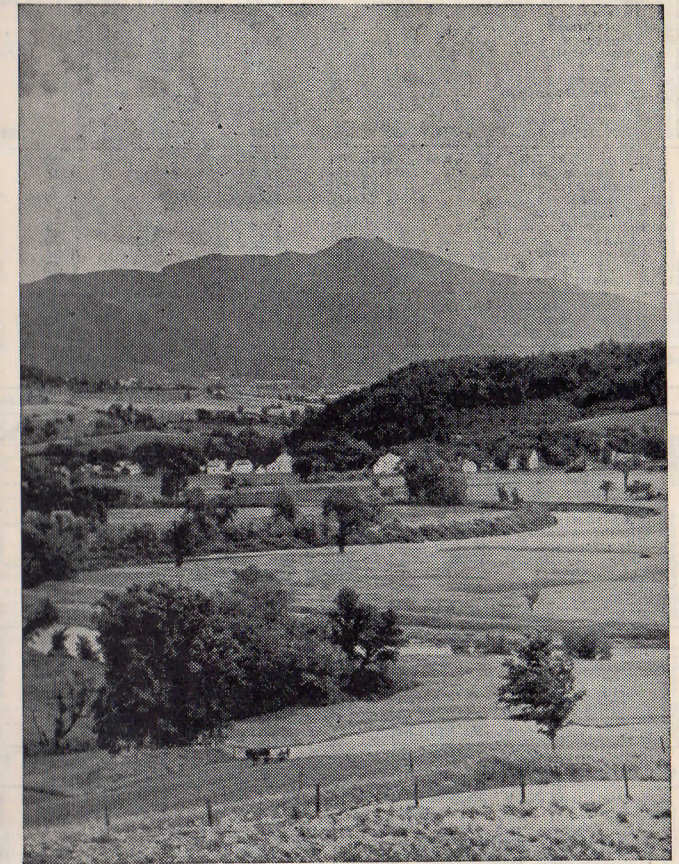
## WESTERN UNION TELEGRAMS

May be sent from any telegraph station. Domestic Service: Full Rate Telegrams (fast service at reasonable rates) Day Letters (inexpensive deferred service) Night Letters (Over-night service at reduced rates) The porter will send your telegram or cablegram from the next station.



# CENTRAL VERMONT RAILWAY

In connection with  
 Canadian National Grand Trunk Railways



VERMONT - VACATIONLAND

CENTRAL VERMONT RAILWAY

MONTREAL - VERMONT POINTS - NEW YORK - PHILADELPHIA - WASHINGTON - BOSTON

EQUIPMENT - REFERENCES - OPTIONAL ROUTE VIA EAST ALBURGH, VT. OR ST. ARMAND, QUE. SEE PAGE 4

Miles	(Southbound)	320	332	304	404	20-302	(Northbound)	703	73	66-77	79	7059	168-733	7055	717
0.0	(Can. Nat'l Central Sta.)	P.M.	A.M.	P.M.	P.M.	P.M.	(Union Station)	A.M.	A.M.	A.M.	P.M.	P.M.	P.M.	P.M.	P.M.
4.0	Montreal, Que. (CN) ▲	∅	*9.20			*8.35	Washington, D. C. (PRR) Lv								
23.2	St. Johns		09.41			08.52	Baltimore, Md. (Penna. Sta.)								
40.3	Cantic, Que.		10.31			09.20	Wilmington, Del.								
50.1	East Alburgh, Vt. (CV)					9.46	Phila., Pa. (30th St. Sta.)								
56.7	Swanton		11.03				North Philadelphia, Pa.								
65.7	St. Albans ▲	∅	11.21			10.39	Trenton, N. J.								
65.7	St. Albans	Lv		18.30	\$9.00	10.44	Newark, N. J.								
75.4	Georgia						New York, N. Y. (Pa. Sta.) Ar								
78.6	Milton		11.46	8.51	9.20		Atlantic City, N. J. Lv								
85.8	Colchester			9.00	9.20		New York, N. Y. (Pa. Sta.) Ar								
89.5	Essex Jct.	∅	12.01	9.06	9.35	11.15	New York, N. Y. (Pa. Sta.) Lv								
91.4	Ft. Ethan Allen (A) Ar		12.10	9.17	9.47	11.25	New York, N. Y. (GCT) Lv								
94.4	Winooski (A) Ar		12.17	9.25	9.54	11.32	Stamford, Conn.								
97.5	Burlington (C. Term.) Ar		12.25	9.35	10.02	11.40	Bridgeport								
96.1	Burlington (U. Sta.) (A-1) Ar		12.30	9.40	10.07	11.45	New Haven								
0.0	Burlington (U. Sta.) (A-1) Lv		11.25	8.35	9.00	10.45	Meriden								
0.0	Burlington (C. Term.) (A) Lv		11.30	8.40	9.05	10.50	Hartford, Conn.								
2.9	Winooski (A) Lv		11.40	8.50	9.15	11.00	Springfield, Mass. (NH) Ar								
5.7	Ft. Ethan Allen (A) Lv		11.50	8.55	9.20	11.05									
89.5	Essex Jct. ▲	Lv	12.06	9.22	9.40	11.18	Springfield (B&M) Lv								
93.5	Williston			9.29	9.47		Holyoke								
98.6	Richmond		12.20	9.38	9.56		Northampton								
111.8	Waterbury (Stowe) (J)		12.40	9.59	10.16		Greenfield								
116.6	Middlesex			10.09	10.25		East Northfield, Mass.								
121.4	Montpelier Jct.	Ar	12.54	10.16	10.32	11.59	Battleboro, Vt.								
122.9	Montpelier (City Sta.) (A) Ar		1.05	10.30	10.45	12.10	Bellows Falls, Vt.								
129.4	Barre (City Sta.) (A) Ar		1.25	10.50	11.05	12.20	Charlestown, N. H.								
0.0	Barre (City Sta.) (A) Lv		12.15	9.40	9.55	11.30	Claremont Jct., N. H.								
6.0	Montpelier (City Sta.) (A) Lv		12.40	10.05	10.20	11.45	Windsor, Vt. (B&M)								
121.4	Montpelier Jct.	Lv	1.00	10.31	10.37	12.04	Windsor, Vt. (CV)								
126.1	Riverton		1.16	10.39	10.45		Evarts								
130.0	Northfield			10.48	10.53		White River Jct., Vt. (CV) Ar								
137.2	Roxbury		1.48	11.01	11.07										
151.4	Randolph		1.59	11.25	11.30		(North Station)								
158.4	Bethel			11.38	11.41		Boston, Mass. Lv								
163.4	Royalton		2.12	11.49	11.51		Worcester, Mass. (B&M) Lv								
165.2	South Royalton			11.56	11.58		Ayer, Mass. Lv								
170.1	Sharon			12.07	12.07		Lowell, Mass. (B&M) Ar								
175.6	West Hartford			12.18	12.18		Lowell, Mass. Lv								
182.9	Wh. River Jct., Vt. (CV) Ar		*2.40	12.30	12.30	*1.30	Nashua, N. H. Lv								
0.0	Wh. River Jct., Vt. (B&M) Lv		12.05	*2.50			Manchester								
4.1	Lebanon, N. H. Ar		12.18	3.05			Concord								
11.3	Enfield		12.27	3.19			Franklin								
18.1	Canaan		12.45	3.42			Potter Place								
38.6	Potter Place		1.17	4.10			Canaan								
50.9	Franklin		1.40	4.30			Enfield								
69.6	Concord		2.05	4.53			Lebanon, N. H. Lv								
87.2	Manchester		2.42	5.22			Wh. River Jct., Vt. (B&M) Ar								
104.0	Nashua, N. H. Ar		3.06	5.47			Wh. Riv. Jct., Vt. (CV) ▲								
117.4	Lowell, Mass.		3.28	6.11			West Hartford								
117.4	Lowell, Mass. (B&M) Lv		A4.40	1A6.40			Sharon								
133.6	Ayer, Mass. Ar		A5.20	A7.20			South Royalton								
161.6	Worcester, Mass. (B&M) Ar		A6.24	A8.28			Royalton								
142.9	Boston, Mass. (B&M) Ar		P4.05	P6.50			Randolph								
							Roxbury								
							Northfield								
							Riverton								
							Montpelier Jct.								
182.9	White River Jct., Vt. (CV) Lv		A.8.20	P.12.15	P.2.50	A.1.45	Montpelier (City Sta.) (A) Ar								
187.2	Evarts		8.29				Barre (City Sta.) (A) Ar								
191.9	Hartland						Barre (City Sta.) (A) Lv								
197.6	Windsor, Vt. (CV) Ar		8.45	*12.41	*3.12		Montpelier (City Sta.) (A) Lv								
0.0	Windsor, Vt. (B&M) Ar		9.00	*12.44	*3.12										
7.0	Claremont Jct., N. H.		9.45	*12.55	*3.32		Montpelier Jct.								
18.0	Charlestown, N. H.		9.18	*1.11	*3.46		Middlesex								
25.1	Bellows Falls, Vt.		9.29	*1.22	*3.57		Waterbury (Stowe) (J)								
48.8	Battleboro, Vt.		10.16	*2.05	*4.35		Richmond								
59.4	East Northfield, Mass.		10.42	*2.25	*4.54		Williston								
73.1	Greenfield		11.17	*2.48	*5.17		Essex Jct.								
92.1	Northampton		11.58	*3.29	*5.50										
101.2	Holyoke		12.12	*3.46	*6.05		Ft. Ethan Allen (A) Ar								
109.1	Springfield, Mass. (B&M) Ar		12.30	*4.10	*6.23		Winooski (A) Ar								
0.0	Springfield, Mass. (NH) Lv		12.55	*4.32	*6.45		Burlington (C. Trm.) (A) Ar								
25.4	Hartford, Conn.		1.27	*5.08	*7.17		Burlington (U. Sta.) (A-1) Ar								
43.3	Meriden		1.57	*5.36	*7.54		Burlington (U. Sta.) (A-1) Lv								
62.0	New Haven		2.25	*6.07	*8.20		Winooski (A) Ar								
78.6	Bridgeport		2.50	*6.38	*8.44		Ft. Ethan Allen (A) Lv								
101.2	Stamford, Conn.		3.22	*7.14	*9.19										
134.3	New York, N. Y. (GCT) Ar		4.10	*8.00	*10.08		Essex Jct.								
137.2	New York, N. Y. (Pa. Sta.) Ar						Colchester								
0.0	New York, N. Y. (Pa. Sta.) Lv						Milton								
143.9	Atlantic City, N. J. Ar						Georgia								
0.0	New York, N. Y. (Pa. Sta.) Lv						St. Albans, Vt. ▲								
10.0	Newark, N. J. Ar														
58.1	Trenton, N. J. Ar						St. Albans								
85.9	North Philadelphia, Pa.						Swanton								
91.4	Philadelphia, Pa. (30th St. Sta.)						East Alburgh, Vt. (CN) Lv								
118.1	Wilmington, Del.						Cantic, Que.								
186.5	Baltimore, Md. (Penna. Sta.)						St. Johns								
226.6	Washington, D. C. (PRR) Ar						St. Lambert								
	(Union Station)						Montreal, Que. (CN) ▲								

SCHEDULES SHOWN HEREIN ARE SUBJECT TO CHANGE WITHOUT NOTICE

KEENE - WINCHENDON - FITCHBURG - AYER - VIA BELLOWS FALLS

P.M.	A.M.	P.M.	A.M.	P.M.	A.M.	P.M.	A.M.
8.35	9.20	12.15	1.15	8.20	9.30	9.00	<9.00
1.45	2.50	12.15	1.15	8.20	9.30	9.00	<9.00
2.42	3.57	1.22	Ar Bellows Falls (B&M) Lv	7.12	8.20	12.45	12.45
5.20	4.05	1.35	Lv Bellows Falls	6.45	12.10	11.05	11.10
5.57	4.47	2.12	Ar Keene, N. H. Lv	6.03	11.32	10.25	10.30
6.55	5.31	2.58	Winchendon, Mass. Lv	5.10	10.50	9.40	9.50
7.22	*5.59	3.28	Fitchburg, Mass. Lv	3.56	10.17	9.05	9.20
*7.51	*6.22	*3.57	Ar Ayer, Mass. Lv	3.23	*9.53	*8.40	*8.58

BRATTLEBORO, VT. - NEW LONDON, CONN. - Freight Service Only

ST. ALBANS, VT. - RICHFORD, VT. - Freight Service Only

NORTHERN BUS LINES (Railroad tickets not accepted)

ST. ALBANS, VT. AND