

Travel to  
and from

# FLORIDA

On any one of the following

## FAST THROUGH TRAINS

*The Southland  
Dixie Flyer  
Dixie Limited  
The Flamingo  
The Seminole  
The City of Miami*

AIR  
CONDITIONED  
COACHES  
SLEEPERS  
LOUNGE  
OBSERVATION  
DINERS

SAFER  
•  
MORE  
COMFORTABLE  
•  
MORE  
ECONOMICAL  
•  
MORE  
LUXURIOUS

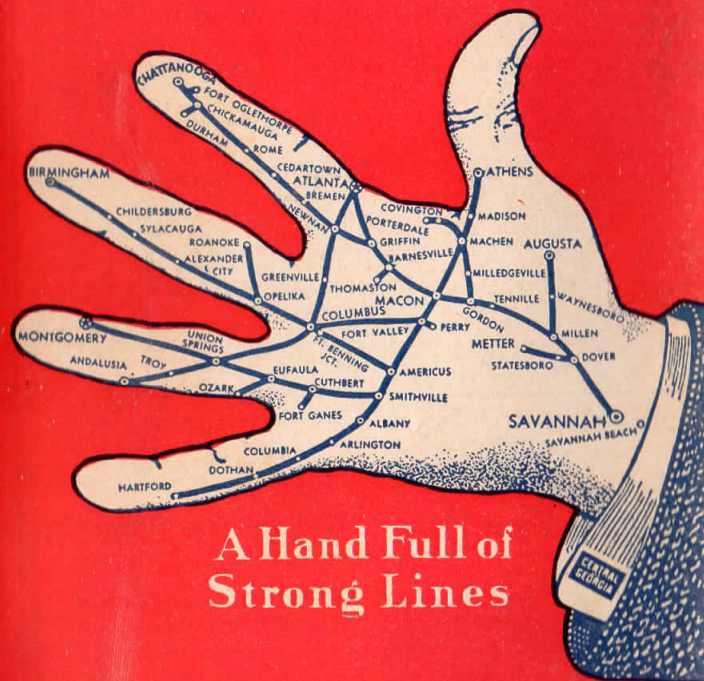
### — LOW FARES —

For Schedules, Routes and Equipment See Preceding Pages

# CENTRAL OF GEORGIA RY.

# CENTRAL OF GEORGIA

## THE RIGHT WAY



A Hand Full of  
Strong Lines

# GEORGIA ALABAMA FLORIDA

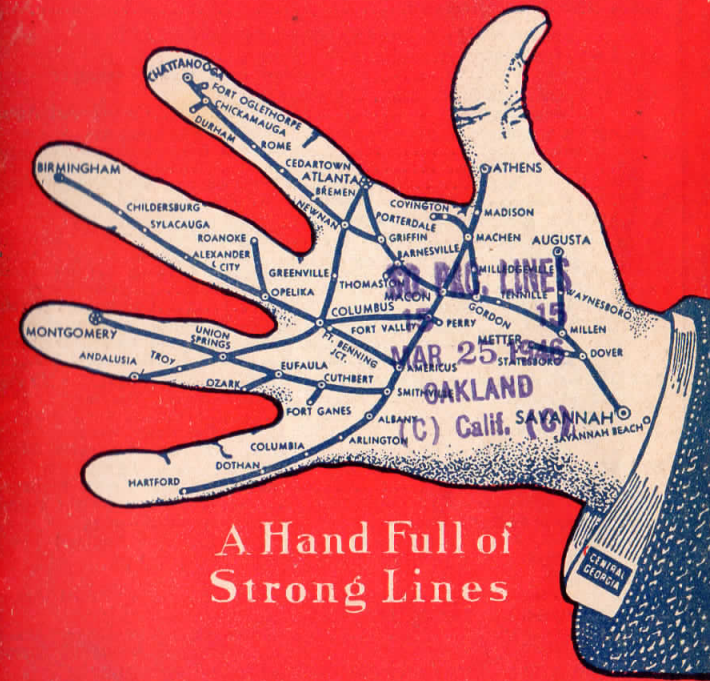
T. J. STEWART  
Passenger Traffic Manager

SAVANNAH, GA.  
No. 83

GEO. W. STRADTMAN  
General Passenger Agent

# CENTRAL OF GEORGIA

## THE RIGHT WAY



A Hand Full of  
Strong Lines

# GEORGIA ALABAMA FLORIDA

T. J. STEWART  
Passenger Traffic Manager

SAVANNAH, GA.  
No. 83

GEO. W. STRADTMAN  
General Passenger Agent

CENTRAL OF GEORGIA RAILWAY COMPANY

M. P. CALLAWAY, Trustee

TRAFFIC

W. MCN. KNAPP, Vice-President.....Savannah, Ga.

PASSENGER

T. J. STEWART, Passenger Traffic Manager.....Savannah, Ga.
GEO. W. STRADTMAN, General Passenger Agent.....Savannah, Ga.

FREIGHT

W. E. STEWART, General Freight Traffic Manager.....Savannah, Ga.
C. D. CHANCELLOR, Freight Traffic Manager.....Savannah, Ga.
S. A. SMITH, Assistant to Freight Traffic Manager.....Savannah, Ga.
M. W. THOMAS, Assistant Freight Traffic Manager.....Savannah, Ga.
A. W. SANDERS, Assistant Freight Traffic Manager.....Savannah, Ga.
H. C. WHITE, General Freight Agent.....Savannah, Ga.
E. J. MCCAFFREY, General Freight Agent.....Savannah, Ga.
K. R. BRAGG, Assistant General Freight Agent.....Savannah, Ga.
H. M. CROGHAN, Commerce Agent.....Savannah, Ga.

DEVELOPMENT

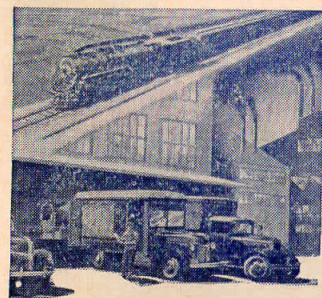
MARION J. WISE, Vice-President.....Savannah, Ga.
HARRELL L. PERKINS, General Industrial Agent.....Atlanta, Ga.
C. LANIER DEAL, Industrial Agent.....Atlanta, Ga.
B. A. NORTON, Industrial Agent.....Atlanta, Ga.
F. A. BATES, Engineer, Bureau of Research.....Atlanta, Ga.
W. T. BENNETT, Director of Agricultural Development.....Savannah, Ga.
H. L. BOWYER, Asst. to Dir. of Agric. Dev.....Savannah, Ga.
J. F. SPIERS, Forester.....Savannah, Ga.
JAMES H. NUNN, Agronomist.....Auburn, Ala.

FREIGHT AND PASSENGER REPRESENTATIVES

ALBANY, GA., 500 N. Washington St., Telephone 25
ATHENS, GA., 115 Mitchell St., Telephone 640
ATLANTA 3, GA., 95 Forsyth St., N. W., Telephone Walnut 8181
ATLANTA 3, GA., 181 Alabama St., S. W., Telephone Walnut 1201
AUGUSTA, GA., Campbell Building, 102 8th St., Telephone 2-5802
BIRMINGHAM 3, ALA., 104 North 20th St., Telephones 3-6231, 3-6232
BIRMINGHAM 3, ALA., 612-617 Empire Bldg., Telephone 3-5295
BOSTON 8, MASS., 929 Old South Bldg., Telephone Liberty 4836
CHARLESTON 3, S. C., 501 Peoples Office Bldg., 18 Broad St., Telephone 3-5617
CHATTANOOGA 2, TENN., 1400 Market St., Telephone 6-1021
CHICAGO 3, ILL., 1842 Bankers Bldg., Telephones State 6531-32
CINCINNATI 2, OHIO, 509 Gwynne Bldg., Telephone Main 0636
COLUMBUS, GA., 12th St. & 6th Ave., Telephones 3-5658, 6211
COLUMBUS, GA., 12th St. & 7th Ave., Telephone 2-0645
DENVER 2, COLO., 612 Denham Bldg., Telephone Main 2345
DETROIT 26, MICH., 912 Transportation Bldg., Telephone Cadillac 7484
JACKSONVILLE 1, FLA., 1013-14-15 Graham Bldg., Telephone 5-3450

KANSAS CITY 6, MO., 810 Fairfax Bldg., Telephone Victor 3937
MACON, GA., 101 Terminal Station, Telephone 305
MACON, GA., 109 Terminal Station, Telephone 4724
MEMPHIS 3, TENN., 1620-21 Exchange Bldg., Telephone 8-8033
MIAMI 3, FLA., 1100 Ingraham Bldg., Telephone 2-6997
MONTGOMERY 4, ALA., 923-925 First National Bank Building, Telephone 5498
NASHVILLE 3, TENN., 335 Third National Bank Bldg., Telephone 6-8313
NEW ORLEANS 12, LA., 1832 Canal Bldg., Telephone Raymond 2974
NEW YORK 7, N. Y., 1580 Woolworth Building, 233 Broadway, Telephone Worth 2-3581
ORLANDO, FLA., 1001 Florida Bank Bldg., Telephone 6557
PITTSBURGH 19, PA., 742 Gulf Bldg., 439 7th Ave., Telephone Atlantic 2055
ROME, GA., 17 East 2nd Ave., Telephone 4978
ST. LOUIS 2, MO., 852-53 Cotton Belt Bldg., Telephone Chestnut 7868
SAN FRANCISCO 5, CAL., 850 Monadnock Bldg., Telephone Douglas 7124
SAVANNAH, GA., Central Passenger Station, Telephone 5517
SAVANNAH, GA., 227 W. Broad St., Telephone 6159
TAMPA 2, FLA., 511 First Nat'l Bk. Bldg., Telephone 4898
WASHINGTON 4, D. C., 402-406 Kellogg Bldg., 1422 F Street, N. W., Telephone Executive 8202
WINSTON-SALEM 3, N. C., 311 Reynolds Bldg., Telephone 3-3450

TRAINS and VEHICLES Geared For Your Shipping Needs



Railway Express service is organized and administered to save America time and effort. Express Trains, motorized delivery vehicles, and skilled personnel keep the nation's goods moving. You can help the even flow of shipments by secure packing, clear addressing and an early start on their way.

RAILWAY EXPRESS AGENCY INC.

NATION-WIDE SERVICE

INDEX TO STATIONS ON CENTRAL OF GEORGIA RAILWAY

On the line indicated but not shown on Time Tables. \* Indicates coupon agency.

Table with multiple columns listing station names and their corresponding table numbers. Includes stations like Adgateville, Albany, Alexander City, etc.

GENERAL INFORMATION

TOTAL MILEAGE, 1,815.65

This Railway is not responsible for errors in time tables, inconvenience or damage resulting from delayed trains or failure to make connections; schedules herein are subject to change without notice.
Time from 12:01 a. m. to 12:00 o'clock, noon, inclusive, is indicated by light-face type; from 12:01 p. m. to 12:00 o'clock midnight, inclusive, by dark-face type.
Redemption of Tickets: Tickets unused, or partly used, will be redeemed under tariff regulations at proper value.
Children under five years of age free, when accompanied by parent or guardian; five years and under twelve, one-half fare; twelve years of age or over, full fare.
Minimum Number of Railroad Tickets Required for Exclusive Occupancy of Sections, Compartments, or Drawing Rooms (Berth or seat service) in addition to proper sleeping or parlor car ticket is as follows:
Drawing Room—Two adult railroad tickets.
Bed Room—One adult railroad ticket.
Compartment—One and one-half railroad tickets.
Section—One adult railroad ticket.
Baggage Maxima: No single piece of baggage exceeding 300 pounds in weight, or 72 inches in greatest dimension, or single shipment exceeding \$2,500.00 in value will be checked. Free allowances subject to tariff stipulations as to contents, weight, value and size.

Baggage Liability Limited: Excess value to be declared and paid for at time of checking.
Insure Your Baggage and Personal Effects, including jewelry, furs and other valuables. Policies on sale at important Ticket Offices. Charge for Unauthorized Articles in Baggage. When passengers fail to disclose nature of articles offered for checking and it develops en route or at destination that the transportation of such articles as baggage is not authorized, collection will be made based on single excess baggage rate for gross weight of such articles, minimum charge thirty (30) cents.
Bicycles (not Motorcycles), Baby Carriages, Dogs and Guns are transported in baggage cars subject to tariff regulations.
Every effort will be made to facilitate the handling of baggage, but the railway cannot guarantee to forward baggage on same train with owner; nor can time of arrival at destination to which checked be guaranteed. To facilitate prompt receipt of their baggage at destination passengers are advised, whenever it is possible to do so, to check it in advance in order that same may be forwarded on a preceding train.
Lost Articles to be inquired for at offices of Division Superintendents, Savannah, Macon and Columbus, and at office Superintendent Terminal Station, Atlanta.
No responsibility assumed for unchecked articles left in stations or cars.

DAILY SLEEPING CAR SERVICE

Table with 2 columns: Train Name/Route and Time. Includes Atlanta-Jacksonville-Miami and Atlanta-Tampa-St. Petersburg.

Table with 2 columns: Train Name/Route and Time. Includes Atlanta-Tampa-St. Petersburg and Atlanta-Tampa-St. Petersburg.

Table with 2 columns: Train Name/Route and Time. Includes Atlanta-Tampa-St. Petersburg and Atlanta-Tampa-St. Petersburg.

Table with 2 columns: Train Name/Route and Time. Includes Savannah-Columbus-Birmingham, St. Louis and Chicago.

Table with 2 columns: Train Name/Route and Time. Includes Savannah-Columbus-Birmingham, St. Louis and Chicago.

Table with 2 columns: Train Name/Route and Time. Includes Savannah-Columbus-Birmingham, St. Louis and Chicago.

Table with 2 columns: Train Name/Route and Time. Includes Savannah-Columbus-Birmingham, St. Louis and Chicago.

Table with 2 columns: Train Name/Route and Time. Includes Savannah-Columbus-Birmingham, St. Louis and Chicago.

Table with 2 columns: Train Name/Route and Time. Includes Savannah-Columbus-Birmingham, St. Louis and Chicago.

Table with 2 columns: Train Name/Route and Time. Includes Savannah-Columbus-Birmingham, St. Louis and Chicago.

TABLE 1—ATLANTA, MACON, SAVANNAH

Main table for Table 1 showing train routes between Atlanta, Macon, and Savannah with times and air-conditioning status.

TABLE 2—EUFULA, OZARK

Table showing train routes between Eufaula and Ozark with times.

TABLE 3—THOMASTON, BARNESVILLE

Table showing train routes between Thomaston and Barnesville with times.

TABLE 4—SAVANNAH, MILLEN, AUGUSTA

Main table for Table 4 showing train routes between Savannah, Millen, and Augusta with times.

TABLE 5—SAVANNAH, MACON, COLUMBUS, AND BIRMINGHAM

Main table for Table 5 showing train routes between Savannah, Macon, Columbus, and Birmingham with times.

TABLE 6—BIRMINGHAM, COLUMBUS, AMERICUS, ALBANY AND JACKSONVILLE

Main table for Table 6 showing train routes between Birmingham, Columbus, Americus, Albany, and Jacksonville with times.

TABLE 7—MACON, SMITHVILLE, ALBANY, HARTFORD

Main table for Table 7 showing train routes between Macon, Smithville, Albany, and Hartford with times.

TABLE 8—MACON, GORDON, PORTERDALE

Table showing train routes between Macon, Gordon, and Porterdale with times.

TABLE 9—MACON, ATHENS

Table showing train routes between Macon and Athens with times.

TABLE 10—COLUMBUS, ATLANTA

Table with columns: 19, 17, Miles, EASTERN TIME, 20, 18. Rows list stations like Columbus, Portson, Canata, Kingsboro, Hamilton, Chipley, Durand, Harris, Warm Spgs., Greenville, Luthersville, Bexton, Raymond, Newnan, Ft. McPherson, Atlanta.

Air-Conditioned Coaches between Columbus and Atlanta.
a-Stops to let off passengers from Columbus.
b-Stops to take passengers for Columbus.

TABLE 11—SMITHVILLE, EUFAULA, MONTGOMERY

Table with columns: 49, 15, Miles, EASTERN TIME, 16, 50. Rows list stations like Smithville, Bronwood, Dawson, Graves, Shellman, Cuthbert, Springvale, Morris, Hatcher, Georgetown, Eufaula, Lugo, Batesville, Comer, Midway, Three-Notch, Union Springs, Thompson, Fitzpatrick, Mitchell, Mathews, Pike Road, Perry's Mill, Barachias, Montgomery.

For schedules between Montgomery, Ala., and Columbus, Ga., see table 12.
\*-Daily. †-Daily, except Sunday. §-Sunday only.
•Covington District trains are held at Machen thirty minutes for Athens District trains.

TABLE 12—COLUMBUS, MONTGOMERY, TROY, ANDALUSIA

Table with columns: 7, 75, Miles, EASTERN TIME, 76, 8. Rows list stations like Columbus (ET), Girard (CT), Brick Yard, Fort Mitchell, Lato, Seale, Hatcheechubbee, Hurtsboro, Guerryton, Suspension, Peachburg, Union Springs, Troy, Alred, Goshen, Glenwood, Brantley, Dozier, Searight, Gant, Andalusia.

\*-Daily. †-Daily, except Sunday. §-Sunday only.
f-Flag stop. CT-Central Time. ET-Eastern Time.

TABLE 13 GRIFFIN, CHATTANOOGA

Table with columns: 1, Miles, EASTERN TIME, 2. Rows list stations like Griffin, Flint River, Brooks, Senoia, Turin, Sharpsboro, Raymond, Newnan, Sargent, Chattahoochee River, Whitesburg, Banning, Clem, Carrollton, Little Tallapoosa River, Mandeville, Bowdon Jet, Bremen, Buchanan, Big Tallapoosa River, Felton, Dugdown, Youngs, Cedartown, Lake, Relay, Silver Creek, Lindale, Etowah River, Rome, Morrison, Lavender, Holland, Chattooga River, Lyerly, Berryton, Summerville, Chattooga River, Trion, LaFayette, Noble, Rock Springs, Chickamauga, Lytle, Missionary Ridge, Rossville (ET), Chattanooga (CT).

Switching service performed between Rome and Mount Berry, Ga. distance 3.6 miles. Cars may be parked at Mount Berry.

TABLE 14 CHICKAMAUGA, DURHAM

Table with columns: 73, Miles, EASTERN TIME, 74. Rows list stations like Chickamauga, Durham.

Chickamauga and Durham, 17.4 miles. Freight service only.

TABLE 15 CUTHBERT, FORT GAINES

Table with columns: 73, Miles, EASTERN TIME, 74. Rows list stations like Cuthbert, Coleman, Pecan, Killens, Fort Gaines.

\*-Daily. †-Daily, except Sunday. §-Sunday only.
f-Flag stop. CT-Central Time. ET-Eastern Time.

TABLE 16—DOVER, METTER

Table with columns: Miles, EASTERN TIME. Rows list stations like Dover, Opechee River, Clito, Statesboro, Jimps, Register, Palaski, Parish, Metter.

TABLE 17—OPELIKA, ROANOKE

Table with columns: 73, Miles, CENTRAL TIME, 74. Rows list stations like Opelika, Roanoke Jet, Danway, Boyd's, LaFayette, Buffalo, Five Points, Strouds, Welch, Roanoke.

TABLE 18—FORT VALLEY, PERRY

Fort Valley and Perry 12.5 miles. Freight, express and mail service only.

TABLE 19—WADLEY SOUTHERN RY.

B. H. LORD, Pres. and G. M., Dublin, Ga.

Table with columns: 1, Miles, EASTERN TIME, 2. Rows list stations like Wadley, Greenway, Blundale, Delwood, Swainsboro.

TABLE 20 THE SYLVANIA CENTRAL RY. CO.

R. R. Cummins, President, Savannah, Ga.

Train leaves Sylvania 8 00 A.M., arriving Rocky Ford (14.7 miles) 8 45 A.M. Returning, leaves Rocky Ford 9 45 A.M., arriving Sylvania 11 00 A.M.

WRIGHTSVILLE & TENNILLE R. R.

B. H. LORD, Pres. and G. M., Dublin, Ga.

Table with columns: 1, Miles, EASTERN TIME, 4. Rows list stations like Tennille, Peacocks, Harrison, Donovan, Wrightsville, Meadows, Lovett, Manning, Brewton, Condor, Dublin.

TABLE 22—LOUISVILLE & WADLEY R. R.

B. H. LORD, Pres. and G. M., Dublin, Ga. Leave Wadley 2 10 p.m. arrive Louisville 2 45 p.m. Leave Louisville 3 30 p.m. arrive Wadley 4 00 p.m. (10 miles) Eastern Time. Daily, except Sunday.

"CITY OF MIAMI"—CHICAGO-MIAMI COACH STREAMLINER Every Third Day

Table with columns: Southbound, Schedule, Northbound. Rows list departure times and equipment for routes to Chicago, St. Louis, Birmingham, Jacksonville, Tampa, etc.

\*-Connecting train service.
a-Stops to discharge from beyond Birmingham and pick up for beyond Albany.
b-Stops to discharge from beyond Albany and pick up for beyond Birmingham.

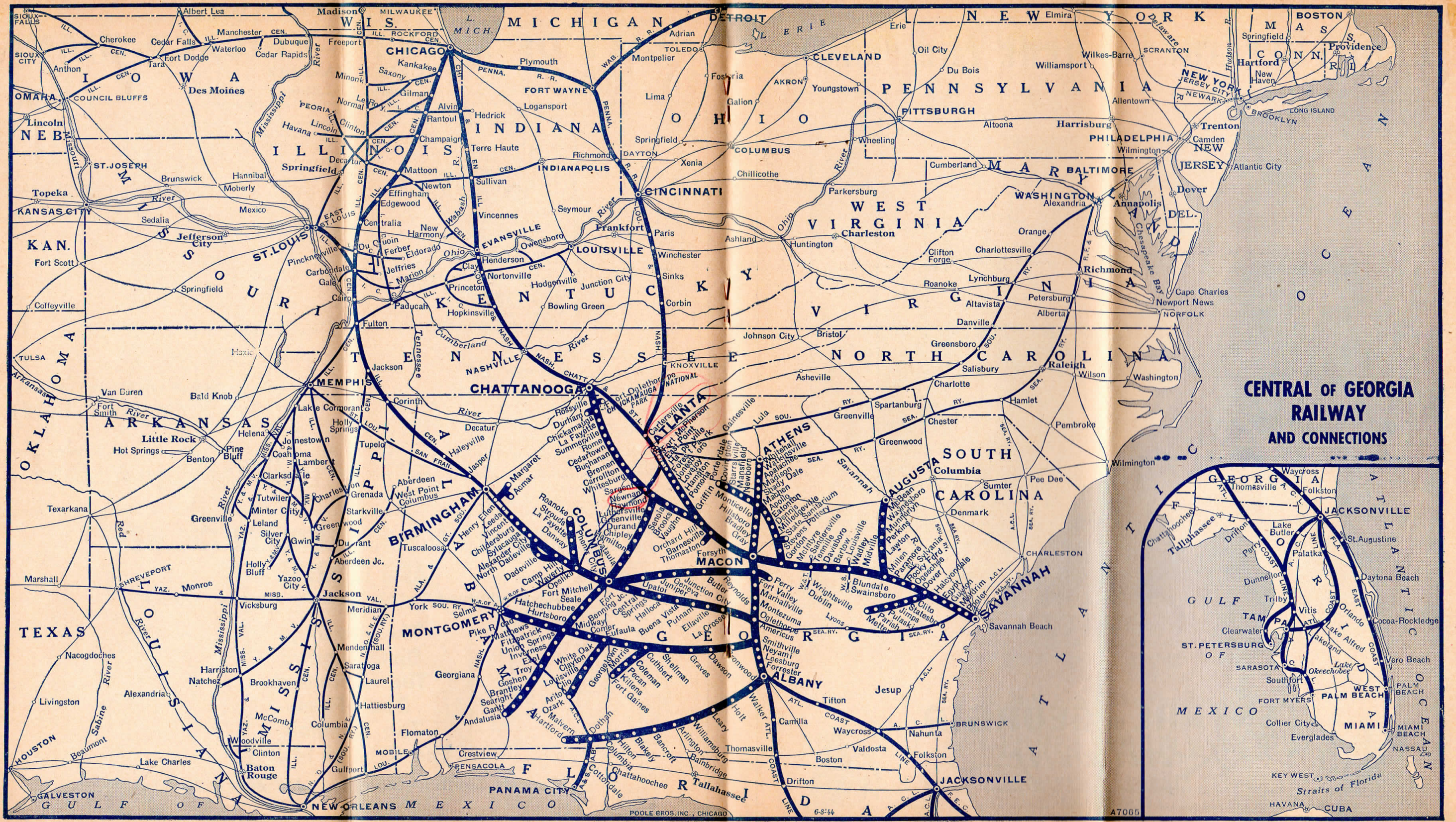
EQUIPMENT DeLuxe Coaches—All Seats Reserved

Table with columns: Between, Chicago-Miami. Rows list equipment types: 22 Reclining Seats, 60 Reclining Seats, 52 Reclining Seats, Dining Car, 60 Reclining Seats, Observation-Buffer-Coach.

Dates of departure from Chicago, St. Louis, Birmingham and intermediate points.
December 16, 19, 22, 25, 28, 31. January 3, 6, 9, 12, 15, 18, 21, 24, 27, 30. February 2, 5, 8, 11, 14, 17, 20, 23, 26. March 1, 4, 7, 10, 13, 16, 19, 22, 25, 28. April 1, 4, 7, 10, 13, 16, 19, 22, 25, 28.

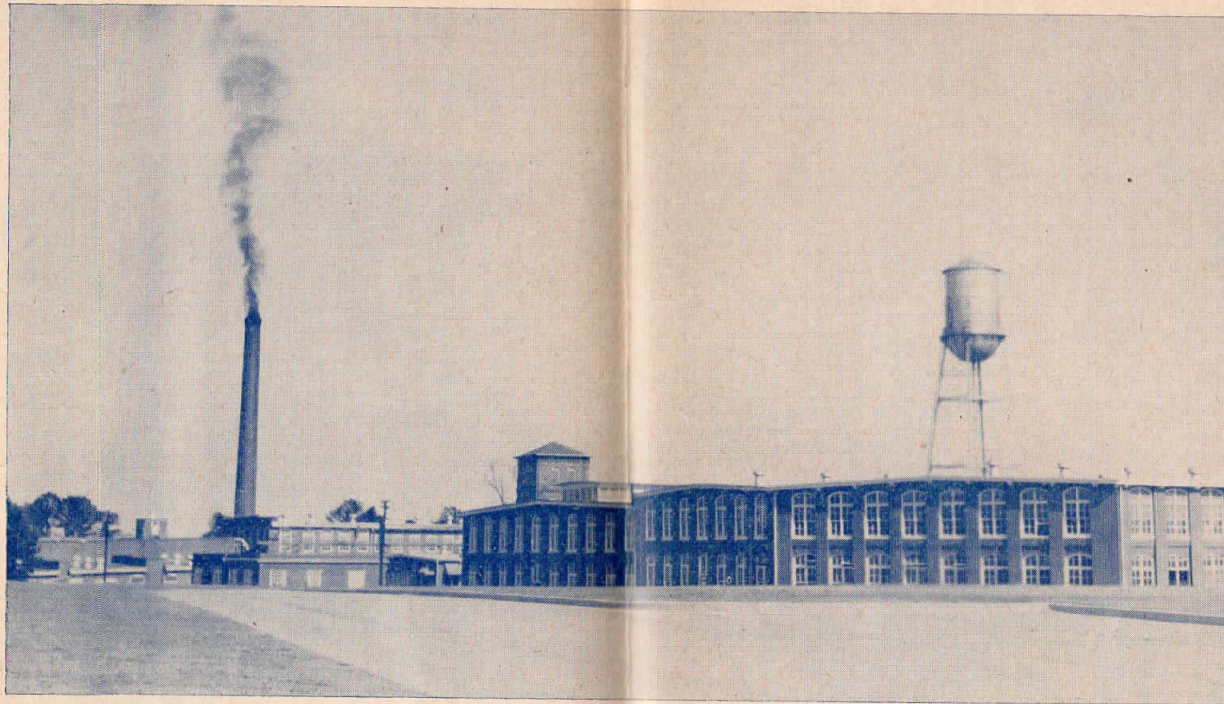
Dates of departure from Miami, West Palm Beach, St. Petersburg, Tampa, Orlando, and intermediate points.
December 17, 20, 23, 26, 29. January 1, 4, 7, 10, 13, 16, 19, 22, 25, 28, 31. February 3, 6, 9, 12, 15, 18, 21, 24, 27. March 2, 5, 8, 11, 14, 17, 20, 23, 26, 29. April 2, 5, 8, 11, 14, 17, 20, 23, 26, 29.

DEPENDABLE SERVICE BETWEEN THE WEST AND FLORIDA
Air-Conditioned Reclining Seat Coaches and Pullmans
The Flamingo
Dixie Limited
The Southland
Dixie Flyer
The Seminole
The City of Miami
Serving South Georgia and All Points in Florida



**CENTRAL OF GEORGIA  
RAILWAY  
AND CONNECTIONS**

## HERE THEY ARE and HERE THEY COME



Opportunities abound in the two great states of Alabama and Georgia—opportunities for progress and prosperity that are being utilized through the expansion of existing business and industry, and through the location of new industries.

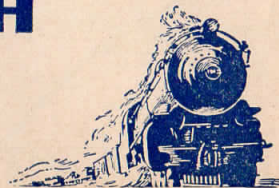
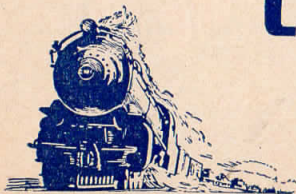
Since V-E Day more industries, large and small, have located in this territory than in any other similar period of time. **Three-fourths** of the enterprises of national importance so locating chose sites on the Central of Georgia Railway.

### THERE ARE REASONS

The Development Department of the Central of Georgia will be only too glad to tell you of them. Its services are available to all interested in agricultural, commercial and industrial progress.

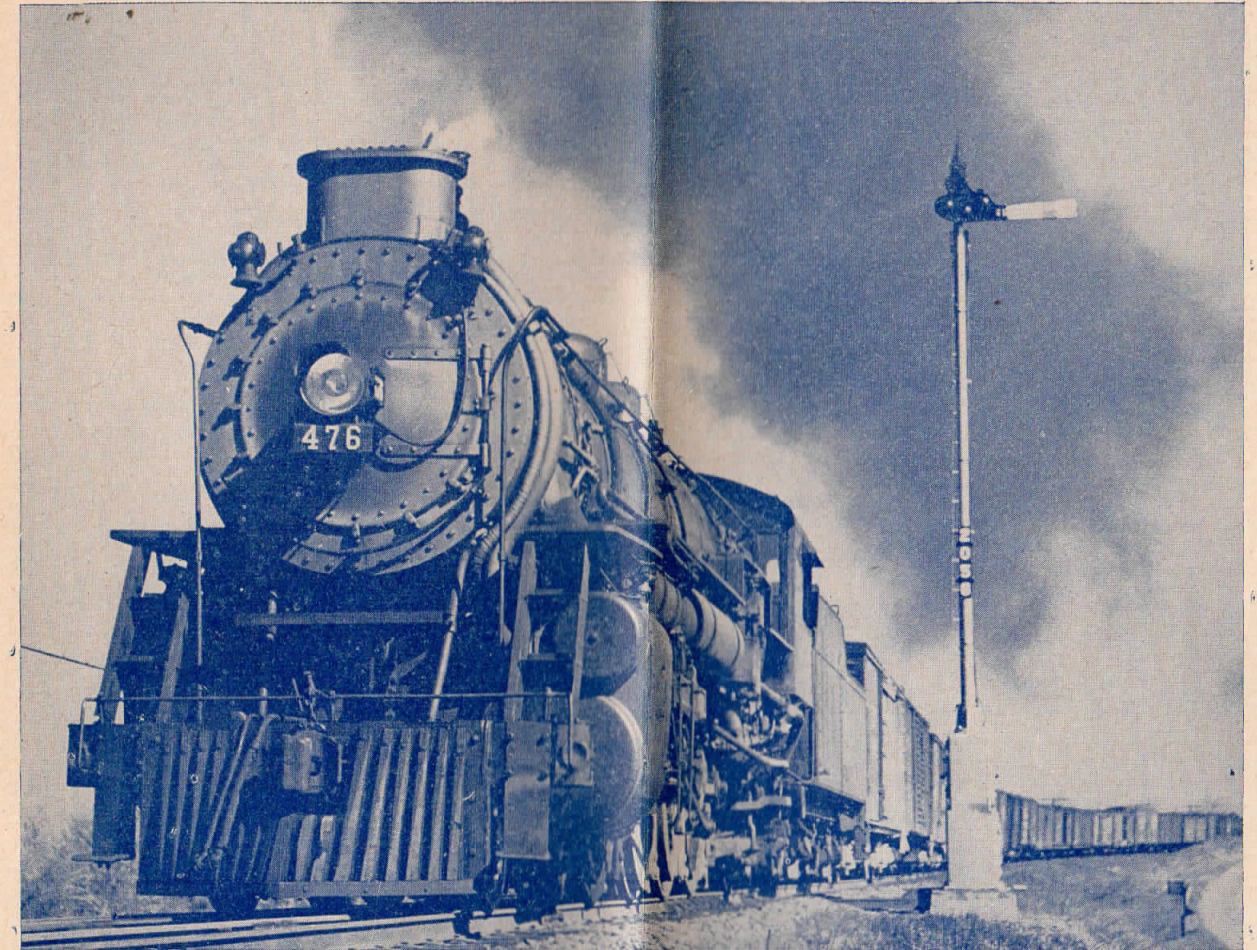
**CENTRAL OF GEORGIA**  
*Railway*

M. J. WISE, VICE-PRESIDENT, DEVELOPMENT,  
SAVANNAH, GA.



## Safe and Efficient Pathway for Freight

You will like the way our agents and representatives serve. Moving freight from City to City, across the State, across the Nation or even the Ocean is no longer a problem. It is as simple as calling our representative into consultation with you about such matters.



This Railway serves the Southeast, including the Port of Savannah where it owns and operates commodious water front terminals. We also intermediately serve other South Atlantic Ports. We believe low cost of transportation to be fundamental to prosperity.

W. McN. Knapp, Vice President

**CENTRAL OF GEORGIA RAILWAY COMPANY**

SAVANNAH, GEORGIA

CONNECTING LINES TRAIN SERVICE

AT ATLANTA, GA.

Table with columns for AM and PM times, stations (Atlanta, Marietta, Cartersville, Dalton, Chattanooga, Knoxville, Tullahoma, Nashville) and train types (N. C. & ST. L. RY., L. & N. R. R.).

Table for L. & N. R. R. showing connections between Atlanta, Knoxville, Cincinnati and Louisville.

Table for SEABOARD AIR LINE RY. showing Eastern Time connections for Atlanta, Athens, Monroe, Raleigh, Portsmouth, Norfolk.

Table for SEABOARD AIR LINE RY. showing Eastern Time connections for Richmond, Washington R. F. & P., Baltimore P. R. R., Philadelphia 30th St., North Philadelphia, New York (Penna. Sta.).

Table for SEABOARD AIR LINE RY. showing Eastern Time connections for Norfolk.

Table for SEABOARD AIR LINE RY. showing Eastern Time connections for Richmond, Washington R. F. & P., Baltimore P. R. R., Philadelphia 30th St., North Philadelphia, New York (Penna. Sta.).

Table for SOUTHERN RY. SYS. showing Eastern Time connections for Atlanta, Rome, Chattanooga.

Table for SOUTHERN RY. SYS. showing Eastern Time connections for Atlanta, Rome, Chattanooga.

\*Coach Stream Liner. All seats reserved without additional charge.

Table for GA. NORTHERN RY. showing Eastern Time connections for Albany, Moultrie, Boston.

Table for SEABOARD AIR LINE RY. showing Eastern Time connections for Athens, Portsmouth, Norfolk.

Table for SEABOARD AIR LINE RY. showing Eastern Time connections for Richmond, Washington R. F. & P., Baltimore P. R. R., Philadelphia 30th St., New York (Penna. Sta.).

\*-Daily, †-Daily, except Sunday. C. T.-Central Time. E. T.-Eastern Time.

AT AUGUSTA, GA.

Table for A. C. L. R. R. showing Eastern Time connections for Augusta, Sumter, Florence, Fayetteville, Wilmington, N. C.

Table for C. & W. C. RY. showing Eastern Time connections for Augusta, Yemassee, Charleston (A. C. L.), Beaufort, S. C., Port Royal, S. C.

Table for SOUTHERN RY. SYS. showing Eastern Time connections for Augusta, Columbia, Charlotte.

Table for SOUTHERN RY. SYS. showing Eastern Time connections for Augusta, Aiken, Denmark, Charleston.

Table for SOUTHERN RY. SYS. showing Eastern Time connections for Augusta, Aiken, Denmark, Charleston.

AT BIRMINGHAM, ALA.

Table for FRISCO LINES showing Central Time connections for Birmingham, Memphis, Kansas City, Tulsa, Oklahoma City.

Table for FRISCO LINES showing Central Time connections for Birmingham, Memphis, Kansas City, Tulsa, Oklahoma City.

Table for L. & N. R. R. showing Central Time connections for Birmingham, Decatur, Nashville, Louisville, Cincinnati, St. Louis, C.T.

Table for SOUTHERN RY. SYS. showing Central Time connections for Birmingham, Tuscaloosa, Meridian, Hattiesburg, New Orleans.

\*Coach Streamliner. All seats reserved without additional charge.

Table for Y. & M. V. R. R. showing Central Time connections for Meridian, Jackson, Vicksburg, Shreveport.

Table for SOUTHERN RY. SYS. showing Central Time connections for Birmingham, Columbus, Miss.

Table for BOWDON RY. showing Eastern Time connections for Bowdon, Bowdon Junction.

Table for BOWDON RY. showing Eastern Time connections for Bowdon, Bowdon Junction.

CONNECTING LINES TRAIN SERVICE

AT CEDARTOWN, GA.

Table for SEABOARD AIR LINE RY. showing Eastern Time connections for Atlanta, Cedartown, Birmingham.

Table for SEABOARD AIR LINE RY. showing Eastern Time connections for Cedartown, Arlington, Colquitt, Bainbridge, Tallahassee.

Table for SEABOARD AIR LINE RY. showing Eastern Time connections for Cedartown, Arlington, Colquitt, Bainbridge, Tallahassee.

Table for A. & ST. A. B. RY. showing Central Time connections for Dothan, Cottondale, Panama City.

Table for TALBOTTON R. R. showing Eastern Time connections for Junction City, Talbotton.

Table for M. D. & S. R. R. showing Eastern Time connections for Macon, Dublin, Vidalia.

Table for L. & N. R. R. showing Central Time connections for Montgomery, Pensacola, Mobile, New Orleans.

Table for W. RY. OF ALA. showing Central Time connections for Montgomery, Tuscaloosa, Selma, St. Louis.

Table for G. M. & O. R. R. showing Central Time connections for Montgomery, Tuscaloosa, St. Louis.

Table for G. M. & O. R. R. showing Central Time connections for Montgomery, Tuscaloosa, St. Louis.

Table for A. C. L. R. R. showing Eastern Time connections for Savannah, Charleston, Union Sta., North Sta., Richmond, Washington R. F. & P., Baltimore, P. R. R., Philadelphia 30th St., New York (Penna. Sta.).

Table for A. C. L. R. R. showing Eastern Time connections for Savannah, Charleston, Union Sta., North Sta., Richmond, Washington R. F. & P., Baltimore, P. R. R., Philadelphia 30th St., New York (Penna. Sta.).

Table for A. C. L. R. R. showing Eastern Time connections for Savannah, Charleston, Union Sta., North Sta., Richmond, Washington R. F. & P., Baltimore, P. R. R., Philadelphia 30th St., New York (Penna. Sta.).

AT SAVANNAH, GA.

Table for A. C. L. R. R. showing Eastern Time connections for Savannah, Jacksonville, Savannah, Jacksonville.

Table for SEABOARD AIR LINE RY. showing Eastern Time connections for Savannah, Jacksonville, Savannah, Jacksonville.

Table for SEABOARD AIR LINE RY. showing Eastern Time connections for Savannah, Jacksonville, Savannah, Jacksonville.

Table for SEABOARD AIR LINE RY. showing Eastern Time connections for Savannah, Jacksonville, Savannah, Jacksonville.

Table for L. & N. R. R. showing Central Time connections for Attalla, Anniston, Sylacauga, Calera.

Table for L. & N. R. R. showing Central Time connections for Attalla, Anniston, Sylacauga, Calera.

CONDENSED THROUGH SCHEDULES AND SERVICE BETWEEN SAVANNAH, MACON AND COLUMBUS, GA., AND MOBILE AND NEW ORLEANS, VIA OPELIKA, AND VIA MONTGOMERY

Table showing connections between Savannah, Macon, Columbus, Opelika, Montgomery, Mobile, New Orleans.

Table showing connections between Savannah, Macon, Columbus, Opelika, Montgomery, Mobile, New Orleans.

Table showing connections between Savannah, Macon, Columbus, Opelika, Montgomery, Mobile, New Orleans.

Table showing connections between Savannah, Macon, Columbus, Opelika, Montgomery, Mobile, New Orleans.

Table showing connections between Savannah, Macon, Columbus, Opelika, Montgomery, Mobile, New Orleans.

Western Union Telegrams may be sent from any telegraph station. Domestic Service: Full Rate Telegrams (Fast service at reasonable rates) Day Letters (inexpensive deferred service) Night Letters (overnight service at reduced rates). The porter will send your telegram or cablegram from the next Western Union Station. The Western Union Telegraph Company handles messages at public telegraph offices on this railroad.

FAMOUS FAST THROUGH TRAINS BETWEEN

DIXIE FLYER AND DIXIE LIMITED—Air-Conditioned

Table with columns for train names (Dixie Limited, Dixie Flyer), effective dates, and departure/arrival times for various routes like C. & E. I. Ry. (CT), L. & N. R. Ry. (CT), N. C. & St. L. Ry. (CT), and Cen. of Ga. Ry. (ET).

ROUTE OF DIXIE FLYER-DIXIE LIMITED



THE FLAMINGO—Air-Conditioned

Table with columns for South Daily and North Daily, effective dates, and departure/arrival times for routes like Penn. R. R., N. Y. C. System (ET), L. & N., and Cent. of Ga. Ry. (ET).

ROUTE OF THE FLAMINGO



THE FLAMINGO EQUIPMENT—Daily COMPLETELY AIR-CONDITIONED

- DeLuxe Coaches... Through between Cincinnati and Jacksonville. Dining Car... Serving all meals enroute. Sleeping Car... Cincinnati and Atlanta, (12 Sec., 1 D. R.)

DIXIE LIMITED EQUIPMENT—DAILY COMPLETELY AIR-CONDITIONED

- DeLuxe Coaches... Between Chicago and Jacksonville. Dining Car... Serving all meals enroute. Sleeping Car... Between Chicago and Jacksonville, (8 Sec., 2 Compt., 1 D. R.)

DIXIE FLYER EQUIPMENT—Daily COMPLETELY AIR-CONDITIONED

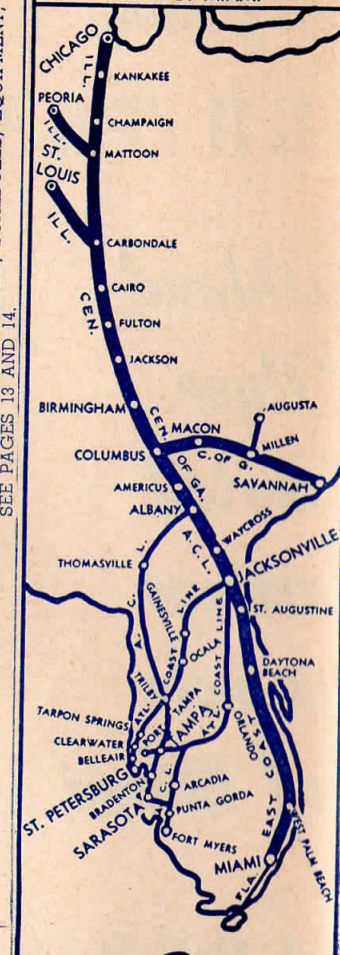
- Coaches... Through between Chicago, Cincinnati and Jacksonville. Dining Car... Serving all meals enroute. Sleeping Car... Between Chicago and Jacksonville (8-2-1).

THE NORTH AND THE SOUTH

THE SEMINOLE—Air-Conditioned

Table with columns for Daily, Effective Dec. 15, 1945, and Daily, departure/arrival times for routes like Ill. Cent. (CT), Cent. of Ga. Ry. (CT), A. C. L. R. R. (ET), and F. E. C. Ry. (ET).

ROUTE OF THE SEMINOLE CITY OF MIAMI



"CITY OF MIAMI"—EVERY THIRD DAY. FOR DATES OPERATED, SCHEDULES, EQUIPMENT, ETC., SEE PAGES 13 AND 14.

"CITY OF MIAMI"—EVERY THIRD DAY. FOR DATES OPERATED, SCHEDULES, EQUIPMENT, ETC., SEE PAGES 13 AND 14.

BUY VICTORY BONDS

- f—Flag stop. h—Sleeper open 10 00 PM (E.T.) Note 1—Connecting motor service between North Cairo and Cairo. m—Sleeper open for occupancy 9 30 PM (E.T.)

THE SEMINOLE EQUIPMENT—DAILY

- DeLuxe Coaches... Through between Chicago and Jacksonville. Dining Car... Serving all meals enroute. Sleeping Car... Between Chicago and Jacksonville (10-2-1).

THE SOUTHLAND—Air-Conditioned

Table with columns for Daily, Effective Dec. 15, 1945, and Daily, departure/arrival times for routes like Penn. R. R. (CT), Wabash Ry. (ET), and Cent. of Ga. Ry. (ET).

ROUTE OF THE SOUTHLAND



THE SOUTHLAND EQUIPMENT—Daily

- DeLuxe Coaches... Through between Cincinnati and Tampa, St. Petersburg, Jacksonville. Dining car... Serving all meals enroute. Sleeping Car... Atlanta—Tampa (12-1); (via Perry).