

FLORIDA EAST COAST RAILWAY



THE ST. AUGUSTINE ROUTE

AIR-CONDITIONED TRAINS

Only Double Track Line
Through Florida

TIME TABLES

SUMMER SERVICE
EFFECTIVE MAY 9, 1938

SUBJECT TO CHANGE WITHOUT NOTICE

W. R. KENAN, Jr., and S. M. LOFTIN
Receivers

J. D. RAHNER
General Passenger Agent

FLORIDA EAST COAST RAILWAY



THE ST. AUGUSTINE ROUTE

AIR-CONDITIONED TRAINS

Only Double Track Line
Through Florida

PAGES
15-18

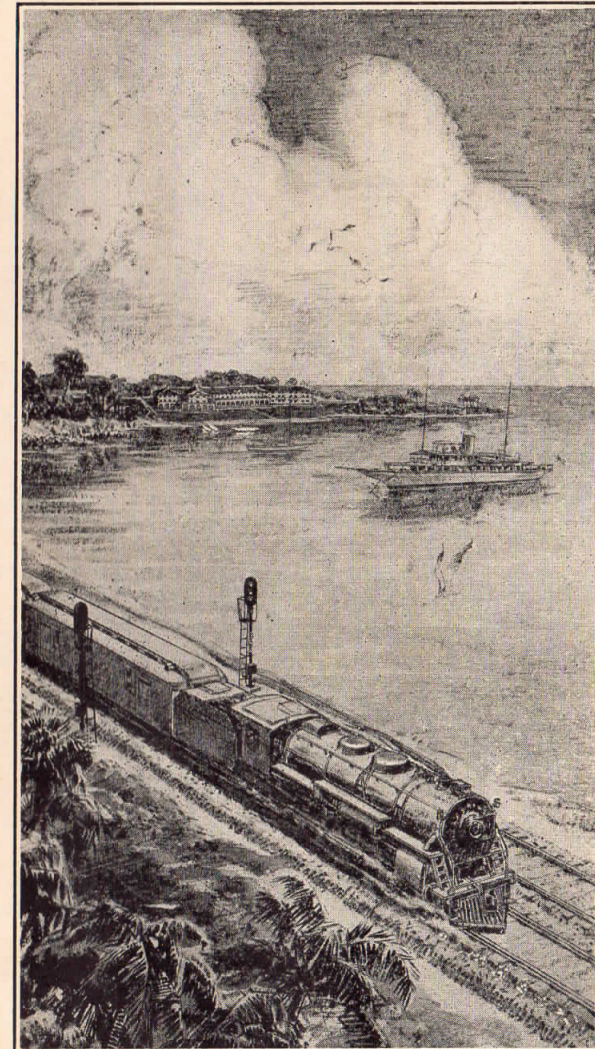
TIME TABLES

SUMMER SERVICE
EFFECTIVE MAY 9, 1938

SUBJECT TO CHANGE WITHOUT NOTICE

W. R. KENAN, Jr., and S. M. LOFTIN
Receivers

J. D. RAHNER
General Passenger Agent



COOL

Air-conditioned
SUMMER TRAINS



Along the Florida Seashore

Florida East Coast Railway summer trains, "The Tamiami" and "Havana Special", are completely air-conditioned,—cool, clean, quiet, and as refreshing as an ocean breeze.

They provide quick through service to and from Washington, New York and the East, direct connection at Jacksonville with air-conditioned trains to and from the Mid-West.

A through air-conditioned sleeper operates daily between Miami, ASHEVILLE and the Carolina Mountains.

Both "The Tamiami" and "Havana Special" have de luxe, individual reclining seats, air-conditioned coaches in addition to air-conditioned Pullman equipment.

FASTEST

The ONLY double track line through Florida, miles shorter between northern and southern sections of the state.

Florida East Coast Railway saves hours in travel time. Its trains provide the FASTEST available mode of transport between Jacksonville and Miami, and to certain through-car destinations.

GEO. L. OLIVER
Asst. Gen. Passenger Agent
16 East 44th Street
New York, N. Y.

J. D. INGRAHAM
Asst. Gen. Passenger Agent
239 West Forsyth St.
Jacksonville, Fla.

F. B. MAY
District Passenger Agent
309 Datura St.
West Palm Beach, Fla.

L. J. IRVIN
Asst. Gen. Passenger Agent
201 S. E. First St.
Miami, Fla.

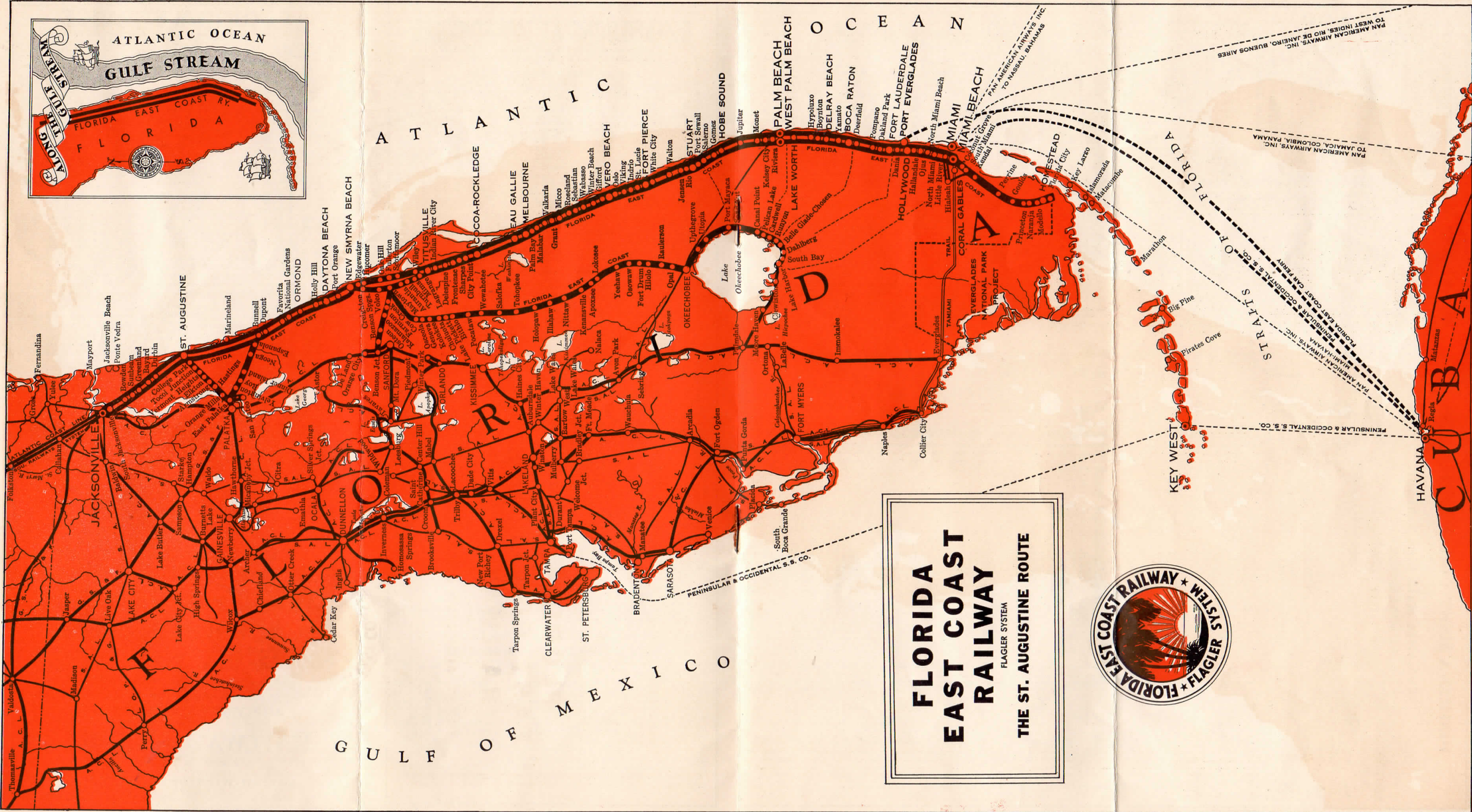
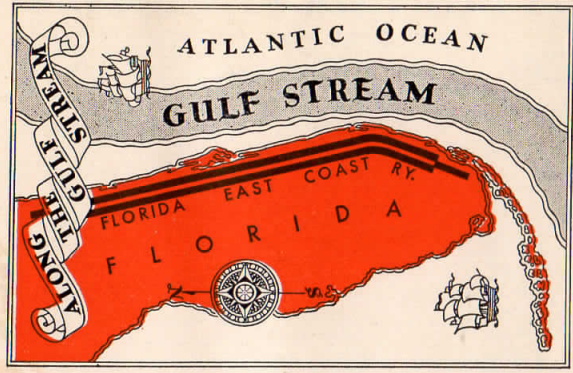
FLORIDA EAST COAST RAILWAY

GENERAL OFFICES:
ST. AUGUSTINE, FLA.

FLAGLER SYSTEM

The St. Augustine Route

NEW YORK OFFICE:
16 East 44th Street



**FLORIDA
EAST COAST
RAILWAY**
FLAGLER SYSTEM
THE ST. AUGUSTINE ROUTE



PAN AMERICAN AIRWAYS, INC. BUENOS AIRES
TO WEST INDIES, RIO DE JANEIRO, PANAMA
TO JAMAICA, COLOMBIA, PANAMA

PAN AMERICAN AIRWAYS, INC.
FLORIDA EAST COAST CAN FERRY
TO MIAMI, HAVANA & OCCIDENTAL S. S. CO.

PENINSULAR & OCCIDENTAL S. S. CO.

HAVANA Regla Matanzas

CUBA

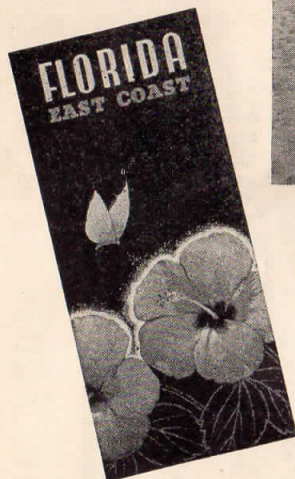
KEY WEST
Pirates Cove
Big Pine
Marathon

FLORIDA

OCEAN

ATLANTIC

GULF OF MEXICO



A good place for **SUMMER FUN**

WHERE COOLING TRADE WINDS BLOW

Down the East Coast of Florida extends a long chain of seashore towns and resorts in a fascinating subtropical setting. All have marvelous nearby or adjacent beaches, unequalled facilities for boating, bathing, fishing and other forms of healthful summer recreation. Cooling trade winds from the sea make the climate delightful.

Famed as a winter resort section, this ocean shore of Florida is gradually being discovered as a most desirable summer playground. It is free from extremes of heat and actually cooler than many northern localities. In addition to these natural advantages, summer hotel rates and other living costs on the East Coast of Florida are reasonable. It offers excellent facilities for a summer pleasure trip or extended vacation.

Any point on this entire ocean shore may be quickly and comfortably reached by Florida East Coast Railway fast, air-conditioned trains.

**Illustrated Booklet
Free on Request**

A beautiful 36-page booklet, describing the East Coast of Florida, illustrated by many maps and photographs, will be mailed on request. Address: J. D. Rahner, General Passenger Agent, Florida East Coast Railway, St. Augustine, Fla.

FLORIDA EAST COAST RAILWAY
FLAGLER SYSTEM
The St. Augustine Route

COOL
AIR-CONDITIONED COMFORT
at **LOW FARES**

Coaches on practically all principal trains in the United States are now air-conditioned, cool, clean and comfortable regardless of outside weather. No other form of transportation affords this luxury and at such low fares.

Coach travel also ranks far superior in roominess, speed, safety, dependability and general convenience. Free from highway hazards you can relax en route, arrive rested and refreshed rather than worn out by your trip. The sample fares quoted below indicate the moderate cost.

EXAMPLES

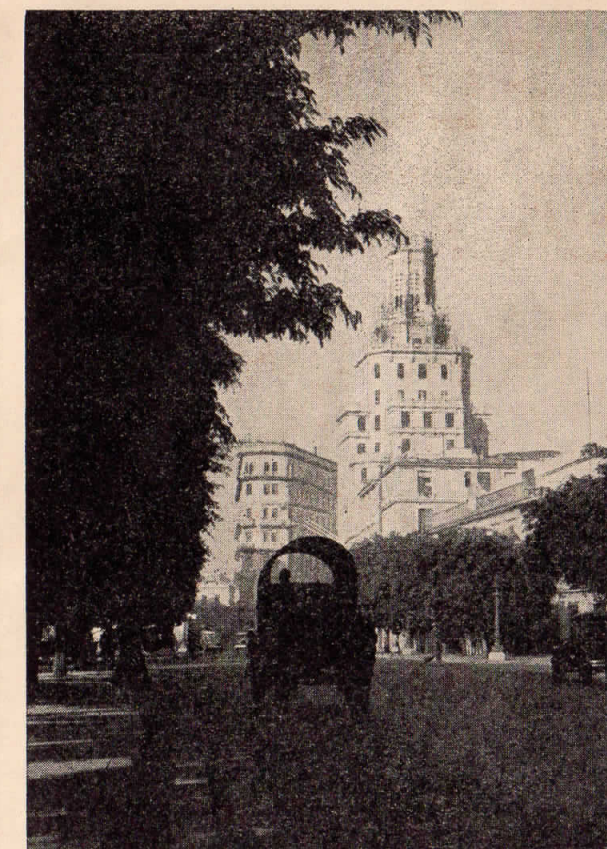
BETWEEN IN COACHES	Miami	Hollywood	Fort Lauderdale	West Palm Beach	Daytona Beach	St. Augustine
Asheville N. C.	\$16.90	\$16.50	\$16.40	\$15.55	\$11.75	\$ 9.55
Atlanta Ga.	14.15	13.80	13.70	12.80	9.05	6.85
Birmingham Ala.	15.90	15.60	15.45	14.60	11.00	8.80
Chattanooga Tenn.	16.90	16.50	16.40	15.55	11.75	9.55
Chicago Ill.	28.97	28.62	28.48	27.63	23.85	21.65
Cincinnati Ohio	23.75	23.40	23.25	22.40	18.60	16.40
Louisville Ky.	23.20	22.80	22.70	21.85	18.05	15.85
Macon Ga.	12.40	12.05	11.90	11.05	7.30	5.10
Memphis Tenn.	21.00	20.65	20.50	19.65	16.10	13.90
Nashville Tenn.	19.95	19.60	19.45	18.60	14.80	12.60
New Orleans La.	19.60	19.25	19.10	18.30	14.50	12.30
New York N. Y.	27.60	27.25	27.11	26.27	22.49	20.29
Philadelphia Pa.	25.80	25.45	25.31	24.47	20.69	18.49
Richmond Va.	20.80	20.45	20.30	19.45	15.70	13.50
St. Louis Mo.	25.87	25.52	25.39	24.54	20.96	18.76
Washington D. C.	23.10	22.80	22.65	21.80	18.00	15.80

LOCAL DESTINATIONS

BETWEEN IN COACHES	Miami	Hollywood	Fort Lauderdale	West Palm Beach	Daytona Beach	Jacksonville
Jacksonville Fla.	\$ 7.35	\$ 7.00	\$ 6.85	\$ 6.00	\$ 2.20
St. Augustine Fla.	6.60	6.25	6.10	5.25	1.50
Daytona Beach Fla.	5.15	4.80	4.65	3.80	2.20
New Smyrna Beach Fla.	4.85	4.50	4.35	3.50	2.50
Titusville Fla.	4.25	3.90	3.75	2.90	3.10
Cocoa-Rockledge Fla.	3.85	3.50	3.35	2.55	1.30	3.50
Eau Gallie Fla.	3.55	3.20	3.05	2.20	1.65	3.80
Melbourne Fla.	3.45	3.10	2.95	2.10	1.70	3.90
Vero Beach Fla.	2.80	2.45	2.30	1.45	2.40	4.60
Fort Pierce Fla.	2.50	2.15	2.00	1.15	2.65	4.85
Stuart Fla.	2.10	1.75	1.60	.80	3.05	5.25
West Palm Beach Fla.	1.35	1.00	.85	3.80	6.00
Fort Lauderdale Fla.	.50	.1585	4.65	6.85
Hollywood Fla.	.3515	1.00	4.80	7.00
Miami Fla.35	.50	1.35	5.15	7.35

Correspondingly low fares to all points in Florida and throughout the Southeast. Also greatly reduced round-trip fares, good for travel in Pullman cars with a limit of 15 days or six months. Consult Agents for fares and information.

FLORIDA EAST COAST RAILWAY
FLAGLER SYSTEM



HAVANA

OVERNIGHT FROM MIAMI

PALATIAL S. S. FLORIDA

SUMMER SAILINGS

Lv. Miami Tuesday and Friday 7:00 pm
Ar. Havana Wednesday and Saturday 9:00 am
Lv. Havana Sunday and Thursday 7:00 pm
Ar. Miami Monday and Friday 8:00 am

\$27.50 ROUND-TRIP MIAMI-HAVANA
TEN-DAY EXCURSION

6-month Excursion, round-trip \$32.00
Includes meals and stateroom berth on ship at sea

FLORIDA EAST COAST RAILWAY
in connection with
PENINSULAR & OCCIDENTAL S.S. CO.