



SERVING

TEXAS
MISSOURI
OKLAHOMA
KANSAS
ARKANSAS
TENNESSEE
MISSISSIPPI
ALABAMA
FLORIDA

THE WILL ROGERS

NEW FAST FRISCO PASSENGER TRAIN BETWEEN
ST. LOUIS—TULSA
and **OKLAHOMA CITY**

FRISCO FASTER FREIGHT
Schedules page 22-23

Nov., 1936

SERVING

TEXAS
MISSOURI
OKLAHOMA
KANSAS
ARKANSAS
TENNESSEE
MISSISSIPPI
ALABAMA
FLORIDA

THE WILL ROGERS

NEW FAST FRISCO PASSENGER TRAIN BETWEEN
ST. LOUIS—TULSA
and **OKLAHOMA CITY**

FRISCO FASTER FREIGHT
Schedules page 22-23

Nov., 1936

**IMPROVED SERVICE
BETWEEN ST. LOUIS AND**

OKLAHOMA

TWO FINE, FAST TRAINS

The Will Rogers

*Sleeping Cars—De Luxe Lounge—
Diner—Chair Cars*

*11:59 pm Lv. St. Louis Ar. 12:15 am
10:10 am Ar. Tulsa Lv. 2:10 pm
12:59 pm Ar. Oklahoma City Lv. 11:30 am

*Sleeping car passengers may retire at 9:30 pm

THRU SLEEPING CAR FROM OKLAHOMA CITY ARRIVING CHICAGO 7:45 am VIA ALTON RAILROAD

THE METEOR

*1 Hour 55 Minutes Earlier at
Oklahoma City!*

6:30 pm Lv. St. Louis Ar. 8:00 am
*5:25 am Ar. Tulsa Lv. 7:50 pm
8:15 am Ar. Oklahoma City Lv. 4:50 pm

*Passengers may remain in sleeping cars until 8:00 am

THRU SLEEPING CAR TO OKLAHOMA CITY LEAVING CHICAGO 11:40 am VIA ALTON RAILROAD

**AIR-CONDITIONED COMFORT
ON ALL FRISCO TRAINS**



FASTER to FLORIDA

On The
KANSAS CITY-FLORIDA SPECIAL
(Commencing early in December)

Early afternoon arrival at Miami

Lv. Kansas City .. (Frisco Lines) .. 7:00 pm
Lv. Memphis " .. 8:00 am
Ar. Birmingham .. " .. 2:35 pm
Ar. Jacksonville .. (Southern Ry.) .. 5:35 am
Ar. Miami (F. E. C. Ry.) .. 1:40 pm

Through Sleeping Cars
KANSAS CITY to
JACKSONVILLE & MIAMI



**CONVENIENT CONNECTIONS
AT JACKSONVILLE**

for St. Petersburg, Tampa and
other points in central and
western Florida.

ST. LOUIS-SAN FRANCISCO RAILWAY COMPANY

J. M. KURN AND JOHN G. LONSDALE, TRUSTEES

General Offices—Frisco Building, St. Louis, Mo.

New York Office, 120 Broadway

TRAFFIC DEPARTMENT DIRECTORY

J. R. KOONTZ, CHIEF TRAFFIC OFFICER, ST. LOUIS, MO.

S. S. BUTLER, Assistant Chief Traffic Officer..St. Louis, Mo.

J. R. COULTER, General Traffic Manager...St. Louis, Mo.

A. L. KREAMELMEYER, Assistant to General Traffic Manager..St. Louis, Mo.

FREIGHT

B. H. STANAGE, Freight Traffic Manager.....St. Louis, Mo.
J. M. STRUPPER, Assistant Freight Traffic Manager.....St. Louis, Mo.
G. L. OLIVER, Assistant Freight Traffic Manager.....St. Louis, Mo.
H. P. NORDEN, Assistant Freight Traffic Manager.....St. Louis, Mo.
C. H. ROMBACH, Assistant General Freight Agent.....St. Louis, Mo.
C. A. REDDEN, Assistant General Freight Agent.....St. Louis, Mo.
S. C. INKLEY, Assistant General Freight Agent.....St. Louis, Mo.
W. E. BERNTHAL, Assistant General Freight Agent.....St. Louis, Mo.
L. P. NASH, Assistant General Freight Agent.....Atlanta, Ga.
E. F. TILLMAN, General Live Stock Agent.....Springfield, Mo.

PASSENGER

J. W. NOURSE, Passenger Traffic Manager.....St. Louis, Mo.
E. G. BAKER, Assistant General Passenger Agent.....St. Louis, Mo.
M. D. RIGGS, Assistant General Passenger Agent.....St. Louis, Mo.
O. T. HALL, Superintendent, Dining Car Service.....Springfield, Mo.

DEVELOPMENT

W. L. ENGLISH, Assistant to Chief Traffic Officer.....Springfield, Mo.
C. B. MICHELSON, Perishable Freight Agent.....St. Louis, Mo.
R. E. BAGENT, Refrigerator Service Agent.....Springfield, Mo.
M. L. AUSTIN, Industrial Agent.....St. Louis, Mo.

ST. LOUIS, SAN FRANCISCO & TEXAS RAILWAY COMPANY FORT WORTH & RIO GRANDE RAILWAY COMPANY

General Offices—Transportation Building, Fort Worth, Texas

J. M. KURN, PRESIDENT, ST. LOUIS, MO.

J. R. KOONTZ, Vice-President.....St. Louis, Mo.
J. H. PEARLSTONE, Vice-President (St. L.-S. F. & T. Ry.).....Dallas, Tex.
C. J. STEPHENSON, Vice-President and Gen. Supt.....Fort Worth, Tex.

J. E. STEELE, General Freight and Passenger Agent.....Fort Worth, Tex.
W. T. MINOR, Assistant General Freight Agent.....Fort Worth, Tex.

TRAFFIC REPRESENTATIVES

Atlanta, Ga.—627 Healey Bldg.—Walnut 4731
J. B. MORROW, General Agent

Birmingham, Ala.—1001-10 Empire Bldg.—Phone 3-9157
J. N. CORNATZAR, Special Traffic Representative
T. H. BANISTER, Traffic Manager
L. M. CANNON, Passenger Representative

102 N. 20th St.—Phone 3-9297
CITY TICKET OFFICE

Blytheville, Ark.—Passenger Station—Phone 823
J. R. HOLLAND, General Agent

Chicago, Ill.—310 S. Michigan Ave.—HARRISON 6784
W. S. MERCHANT, Traffic Manager
W. B. WELLS, Special Representative—Traffic
H. L. MORRISON, General Agent
CHAS. WALPOLE, Passenger Representative

Cincinnati, Ohio—610 Gwynne Building—Main 4627
C. S. HALL, General Agent

Cleveland, Ohio—1140 Terminal Tower—Main 1535
ROY E. PIERCE, General Agent
A. C. BRINGLESON, Traveling Passenger Agent

Dallas, Tex.—
1011-12 Athletic Club Building—Phone 2-7121
ELMER MITCHELL, General Agent
1303 Commerce Street—Phone 2-1401
CITY TICKET OFFICE

Denver, Colo.—624 Cooper Building—Tabor 6716
O. H. REID, General Agent

Detroit, Mich.—7-136 General Motors Building—
J. E. HENDERSON, General Agent—MADISON 3836

East St. Louis, Ill.—508 Spivey Bldg.—Bridge 2546
F. P. FARRELL, General Agent

Fort Smith, Ark.—100 Garrison Avenue—Phone 6271
C. O. McCAIN, Division Freight and Pass'r Agent

Fort Worth, Tex.—700 Transportation Bldg.—Phone 2-4111
J. E. STEELE, Gen. Freight and Pass. Agt.
W. T. MINOR, Assistant General Freight Agent

Houston, Tex.—305 Scanlan Bldg.—Capitol 7830
J. T. FREEMAN, General Agent

Jacksonville, Fla.—713 Graham Building—Phone 5-2038
D. F. McDONOUGH, General Agent

Joplin, Mo.—Frisco Building—Phone 66
J. E. SPRINGER, Division Freight and Pass'r Agent

Kansas City, Mo.—
101 W. 11th St. (Fairfax Bldg.)—Victor 7220
W. L. HUGGINS, Jr., Traffic Manager
F. R. NEWMAN, General Agent
103 West 11th St.—Victor 7220
P. W. WILSON, Division Passenger Agent
CITY TICKET OFFICE

Los Angeles, Cal.—1018-19 Central Bldg.—TUcker 2397
E. F. LEFAIVRE, General Agent

Memphis, Tenn.—
1424 Exchange Building—Phone 6-4020
R. E. BUCHANAN, Traffic Manager
M. W. DUNKIN, General Agent
J. K. OLIVER, Division Passenger Agent
74 Monroe Avenue—Phone 6-0101
CITY TICKET OFFICE

Milwaukee, Wis.—1200-01 Warner Bldg.—
MARquette 3254
E. K. YAEGER, General Agent

Minneapolis, Minn.—919 Metropolitan Life Building—
CHAS. THORBURN, General Agent—GENEVA 1837

New Orleans, La.—609 United Fruit Co. Building—
F. A. EDMONDSON, General Agent—RAYMOND 0968

New York, N. Y.—2142-46 Woolworth Building—
Cortlandt 7-4477
W. L. McDONALD, General Eastern Agent
A. S. OWEN, District Passenger Agent

Oklahoma City, Okla.—
1361 First National Bank Bldg.—Phone 2-1177
J. G. WEAVER, Traffic Manager
R. O. HOPKINS, Division Passenger Agent
4 S. Robinson Street—Phone 3-4457
CITY TICKET OFFICE

Omaha, Neb.—
649 Grain Exchange Building—Atlantic 6858
P. J. ROSE, General Agent

Paris, Tex.—Scott Title & Trust Co. Bldg.—Phone 132
S. L. BEDFORD, General Agent

Pensacola, Fla.—San Carlos Hotel—Phone 4131
W. H. CROW, General Agent

Philadelphia, Pa.—1514 Girard Trust Co. Building—
W. O. DODGE, General Agent—LOcust 4191

Pittsburgh, Pa.—2043-44 Oliver Bldg.—Atlantic 2214
T. W. BENNETT, General Agent
A. C. BRINGLESON, Traveling Passenger Agent

San Antonio, Tex.—713 Majestic Bldg.—Fannin 3841
WM. G. SMITH, General Agent

San Francisco, Cal.—932 Monadnock Building—
C. D. SEMPLE, General Agent—DOUGLAS 1128

Seattle, Wash.—1154 White-Henry-Stuart Building—
W. H. BREWER, General Agent—SENECA 0811

St. Louis, Mo.—923 Frisco Building—CHEstnut 7800
F. J. LAWLER, Asst. Gen. Freight and Pass'r Agent
L. C. HOFMAN, General Agent
HARRISON WILL, Division Passenger Agent
322 North Broadway—CHEstnut 7800
CITY TICKET OFFICE

Springfield, Mo.—Phone 2780
G. M. FORRESTER, General Agent

Tulsa, Okla.—Philcade Building—Phone 3-3151
J. E. PAYNE, Traffic Manager
P. F. ATKINSON, Division Passenger Agent
CITY TICKET OFFICE

Wichita, Kan.—102 Union Station—Phone 3-7221
C. S. UNDERWOOD, Div. Freight and Pass'r Agent
H. A. BAKER, General Agent

Winston-Salem, N. C.—612 Reynolds Bldg.—
D. E. MCKEITHEN, General Agent—Phone 7255

INDEX TO STATIONS

Find in the index the Table in which your station is located. For example: Rolla, Mo., is carried in Table No. 1 and Parsons, Kan., in Table No. 30. Where no time is shown at a station the train does not stop. The numbers opposite a station refer to other tables in which that station appears. Note all reference marks carefully. *Indicates coupon station. ■Indicates stations on other lines.

Table of station indices for page 18, organized by letter (A, B, C, D, E, F, G, H, I, J, K, L, M, N, O, P, Q, R, S, T, U, V, W, X, Y) and Table No. columns.

▲ INCLUDED IN SUPPLEMENTARY INDEX ON PAGE 18.

INDEX TO STATIONS—Continued

Continuation of station index for page 18, organized by letter (A, B, C, D, E, F, G, H, I, J, K, L, M, N, O, P, Q, R, S, T, U, V, W, X, Y) and Table No. columns.

▲ INCLUDED IN SUPPLEMENTARY INDEX ON PAGE 18.

CONDENSED SCHEDULES AND EQUIPMENT

CHICAGO—ST. LOUIS—OKLAHOMA

METEOR			THE WILL ROGERS		
9 Daily	SEE TABLE 1	10 Daily	3 Daily	SEE TABLE 1	4 Daily
Alton No. 1 11.40AM 5.10PM	Lv. Chicago Ar. St. Louis	See Note A below	See Note B below	Lv. Chicago Ar. St. Louis	Alton No. 10 7.45AM 12.30AM
Air-Conditioned Sleeping Cars: Chicago to Oklahoma City via St. Louis and Alton R. R. No. 1 (12-sec., D. R.). Provides car-to-car change after leaving St. Louis to Tulsa car. Returns on Frisco No. 4 and Alton No. 10. Between St. Louis and Tulsa (10-sec., 1-D. R., 2-Compt.); may be occupied at Tulsa until 8.00 a. m. Between St. Louis and Oklahoma City (12-sec. D. R.) Springfield to St. Louis (16-sec.); may be occupied at 9.30 p.m. Westbound on No. 3. Not air-conditioned. Air-Conditioned Lounge Cars: Between St. Louis and Oklahoma City Between Chicago and St. Louis Air-Conditioned Chair Cars (Seats Free): Between St. Louis and Oklahoma City Between Chicago and St. Louis Air-Conditioned Dining Car Service			Air-Conditioned Sleeping Cars: St. Louis to Oklahoma City (12 Sec., D. R.); may be occupied at 9.30 p.m. Eastbound on No. 10 St. Louis to Springfield. May be occupied at St. Louis 9.30 p.m. and at Springfield until 8.00 a.m. (16-sec.). Eastbound on No. 10. Not air-conditioned Oklahoma City and Tulsa to Chicago via St. Louis and Alton R. R. No. 10 (12-sec. D. R.) Returns on Alton No. 1 and Frisco No. 9 Air-Conditioned Lounge Car: Between St. Louis and Oklahoma City Between Chicago and St. Louis Air-Conditioned Chair Cars: Between St. Louis and Oklahoma City Between Chicago and St. Louis Air-Conditioned Dining Car Service		
NOTE A: Connects in St. Louis Union Station with trains arriving Chicago 1.45 p.m. via Wabash Ry; 1.50 p.m. via Illinois Central R. R., and 1.53 p.m. via Alton R. R.			NOTE B: Leave Chicago 4.30 p.m. via Alton or Wabash or 5.00 p.m. via I. C. R. R.		

ST. LOUIS—TEXAS

THE BLUEBONNET			TEXAS SPECIAL		
7 Daily	SEE TABLES 1 AND 2	8 Daily	1 Daily	SEE TABLES 1 AND 2	2 Daily
Air-Conditioned Lounge Car: Between St. Louis and Monett Air-Conditioned Sleeping Cars: Between St. Louis and Ft. Worth (12-sec., D. R.) Between St. Louis and Dallas (10-sec., 1-D. R., 2-Compt.) May be occupied at Dallas and Ft. Worth until 7.30 a. m. Air-Conditioned Chair Cars (Seats Free): Between St. Louis and Dallas. COACH SERVICE ALL THE WAY Air-Conditioned Dining Car Service			Air-Conditioned Lounge Car: (Soda Fountain-Radio-Valet-Shower.) Between St. Louis and San Antonio Air-Conditioned Sleeping Cars: Between St. Louis and Fort Worth (12-sec. D. R.) Dallas to St. Louis (10-sec., 1-D. R., 2-Compt.) Southbound on No. 9 Between St. Louis and San Antonio (14-sec., 1-D. R., 2-Compt.) Between San Antonio and Mexico City (10-sec., 1-D. R., 2-Compt.) Air-Conditioned Chair Cars (Seats Free): Between St. Louis, Dallas and San Antonio. COACH SERVICE ALL THE WAY Air-Conditioned Dining Car Service		
VIA FRISCO—M.-K.-T. LINES 1.30PM Lv. St. Louis 5.53PM Lv. Lebanon 7.25PM Lv. Springfield 8.35PM Lv. Monett 6.35AM Ar. Dallas (Highland Pk.) 6.45AM Ar. Dallas (Union Station) 6.40AM Ar. Fort Worth			VIA FRISCO—M.-K.-T. LINES 5.30PM Lv. St. Louis 9.18AM Ar. Dallas (Highland Pk.) 9.30AM Ar. Dallas (Union Station) 9.30AM Ar. Fort Worth 9.35AM Lv. Dallas 2.28PM Ar. Austin 4.30PM Ar. San Antonio VIA SOUTHERN PACIFIC 9.45PM Lv. San Antonio 8.00AM Ar. Brownsville VIA MO. PAC. LINES 4.45PM Lv. San Antonio VIA N. RYS. OF M. 10.35PM Ar. Mexico City		

TEXAS LIMITED

TEXAS LIMITED			ST. LOUIS—FT. SMITH—JOPLIN—WICHITA		
9 Daily	SEE TABLES 1 AND 2	For Thru Service	3-703 Daily	SEE TABLES 1, 5 AND 6	710-10 Daily
Air-Conditioned Lounge Car: St. Louis to Monett Air-Conditioned Sleeping Cars: St. Louis to Dallas (10-sec., 1-D. R., 2-Compt.) Northbound on No. 2 (Ft. Worth passengers make car to car change at Denison) Dallas to San Antonio (12-sec., D. R.) COACH SERVICE ALL THE WAY Air-Conditioned Dining Car Service			Sleeping Cars: Between St. Louis and Fort Smith (16-sec.). Air-conditioned Between St. Louis and Joplin (12-sec., D. R.). Not air-conditioned Air-Conditioned Lounge Car: Between St. Louis and Monett Air-Conditioned Chair Car: Between St. Louis and Monett Air-Conditioned Dining Car: Between St. Louis and Monett Air-Conditioned Coaches: ("Snack" car providing luncheon service) Between Monett and Paris Between Monett and Wichita		
VIA FRISCO—M.-K.-T. LINES 6.30PM Lv. St. Louis 12.05PM Ar. Dallas (Highland Pk.) 12.15PM Ar. Dallas (Union Station) 12.30PM Ar. Fort Worth 12.40PM Lv. Dallas 6.50PM Ar. Austin 9.15PM Ar. San Antonio			11.59PM Lv. St. Louis 6.50AM Ar. Monett 7.15AM Lv. Monett 11.35AM Ar. Ft. Smith 4.50PM Ar. Paris 303 7.20AM Lv. Monett 8.50AM Ar. Joplin 2.35PM Ar. Wichita		

KANSAS CITY—MEMPHIS—BIRMINGHAM AND THE SOUTHEAST

KANSAS CITY—FLORIDA SPECIAL			THE SUNNYLAND		
105 Daily	SEE TABLE 3	106 Daily	107 Daily	SEE TABLE 3	108 Daily
Air-Conditioned Sleeping Cars: Between Kansas City and Jacksonville (10-sec., 1-D. R., 2-Compt.) Between Jacksonville and Miami Between Kansas City and Birmingham (12-sec., D. R.) Between Atlanta and Brunswick (10-sec., 2-D. R.) Air-Conditioned Lounge Car: Between Kansas City and Birmingham Air-Conditioned Chair Cars: Between Kansas City and Birmingham COACH SERVICE ALL THE WAY Air-Conditioned Dining Car Service			Air-Conditioned Sleeping Cars: Between Kansas City and Atlanta via Birmingham and Southern Ry. (12-sec., D. R.) Between Memphis and Atlanta via Birmingham and S. A. L. Ry. (12-sec., D. R.) Eastbound cars may be occupied at Memphis at 9.30 p.m.; westbound, passengers may remain in cars at Memphis until 7.30 a.m. Air-Conditioned Lounge Car: Between Kansas City and Memphis Air-Conditioned Coaches: Between Kansas City and Birmingham COACH SERVICE ALL THE WAY Air-Conditioned Dining Car Service		
VIA FRISCO LINES 7.30PM Lv. Kansas City 9.45PM Ar. Fort Scott 12.25AM Ar. Springfield 8.30AM Ar. Memphis 8.55AM Lv. Memphis 3.35PM Ar. Birmingham VIA SOUTHERN RY. 4.00PM Lv. Birmingham 8.40PM Ar. Atlanta (C.T.) 6.15AM Ar. Brunswick (E.T.) 6.35AM Ar. Jacksonville (E.T.) VIA F. E. C. RY. 8.00AM Lv. Jacksonville (E.T.) 4.00PM Ar. Miami			VIA FRISCO LINES 8.20AM Lv. Kansas City 10.35AM Ar. Fort Scott 1.10PM Ar. Springfield 9.10PM Ar. Memphis 11.15PM Ar. Birmingham VIA SOUTHERN RY. 7.15AM Lv. Birmingham 11.50AM Ar. Atlanta VIA SEABOARD AIRLINE RY. 7.55AM Lv. Birmingham 12.20PM Ar. Atlanta		

CONDENSED SCHEDULES AND EQUIPMENT

ST. LOUIS—MEMPHIS AND THE SOUTHEAST

THE SUNNYLAND			MEMPHIAN		
807-107 Daily	SEE TABLES 3, 4 AND 21	108-808 Daily	805-105 Daily	SEE TABLES 3 AND 4	106-806 Daily
Air-Conditioned Sleeping Cars: Between Memphis and Birmingham (12-sec. D. R.) Trains 107 and 108 Eastbound cars may be occupied at Memphis at 9.30 p.m.; Westbound, passengers may remain in cars at Memphis until 7.30 a.m. Between Memphis and Pensacola (Trains 223-207 and 208-108) may be occupied at Memphis until 7.30 a.m. Air-Conditioned Coaches: ("Snack" car providing luncheon service) Between St. Louis and Memphis Air-Conditioned Coaches: Between Memphis and Birmingham Between Memphis and Pensacola			Air-Conditioned Sleeping Cars: Between St. Louis and Memphis (16-sec.); open for occupancy at St. Louis and Memphis at 9.30 p.m.; southbound, passengers may remain in car at Memphis until 8.00 a.m. Between Memphis and Jacksonville (10-sec., 1 D. R., 2-Compt.) Air-Conditioned Lounge Cars: Between St. Louis and Memphis Between Memphis and Birmingham Air-Conditioned Coach - Lounge Car (Seats Free): Between St. Louis and Memphis Air-Conditioned Chair Cars: Between Memphis and Birmingham COACH SERVICE ALL THE WAY Air-Conditioned Dining Car Service		
8.45AM Lv. St. Louis 12.22PM Ar. Cape Girardeau 1.28PM Lv. Sikeston 3.02PM Lv. Caruthersville 3.55PM Lv. Blytheville 5.50PM Ar. Memphis 11.15PM Ar. Birmingham 223-207 6.25PM Lv. Memphis 7.59AM Ar. Pensacola			5.10PM Lv. Cape Girardeau 1.25PM Ar. Sikeston 12.10PM Lv. Caruthersville 9.38AM Lv. Blytheville 7.45AM Ar. Memphis 6.50AM Ar. Birmingham 208-108 6.50AM Lv. Memphis 5.05PM Ar. Pensacola		

ST. LOUIS—SPRINGFIELD—MONETT

ST. LOUIS—SPRINGFIELD—MONETT			MEMPHIS—OKLAHOMA CITY		
5 Daily	SEE TABLE 1	6 Daily	106-3	SEE TABLES 1 AND 3	10-105
Air-Conditioned "Snack" Car: (Providing luncheon service) Between St. Louis and Springfield Air-Conditioned Coaches: Between St. Louis and Monett			Air-Conditioned Sleeping Cars: Between Memphis and Oklahoma City (12-sec., D. R.) Air-Conditioned Lounge Cars: Between Memphis and Oklahoma City Air-Conditioned Chair Cars: Between Memphis and Springfield Between Springfield and Oklahoma City Air-Conditioned Coaches: ("Snack" car providing luncheon service) Between Monett and Wichita Air-Conditioned Dining Car Service		
7.30AM Lv. St. Louis 10.45AM Ar. Rolla 1.02PM Ar. Lebanon 2.40PM Ar. Springfield 3.57PM Ar. Aurora 4.25PM Ar. Monett			8.30AM Lv. Memphis 1.15AM Ar. Springfield 11.45PM Ar. Monett 7.50PM Ar. Tulsa 4.50PM Ar. Oklahoma City 310 7.20AM Lv. Monett 8.50AM Ar. Joplin 2.35PM Ar. Wichita		

KANSAS CITY—OKLAHOMA

OIL FIELDS SPECIAL			OKLAHOMAN		
107-117 Daily	SEE TABLE 8	118-108 Daily	111-3 Daily	SEE TABLE 8	112 Daily
Air-Conditioned Lounge-Diner: Between Kansas City and Oklahoma City Air-Conditioned Coach - Lounge Car (Seats Free): Between Kansas City and Oklahoma City			Air-Conditioned Sleeping Cars: Between Kansas City and Tulsa; (12-sec., D.R.) may be occupied until 8.00 a.m. Open for occupancy at Kansas City 10.00 p.m.; at Tulsa 9.30 p.m. Air-Conditioned Chair Cars: Between Kansas City and Tulsa Tulsa to Oklahoma City Air-Conditioned Dining Car: Tulsa to Oklahoma City		
8.20AM Lv. Kansas City 11.43AM Ar. Pittsburg 12.42PM Ar. Joplin 1.44PM Ar. Miami 3.59PM Ar. Tulsa 5.30PM Lv. Tulsa 8.40PM Ar. Oklahoma City			8.25PM Ar. Pittsburg 4.50PM Ar. Joplin 3.45PM Ar. Miami 12.30PM Ar. Tulsa 11.25AM Ar. Tulsa 8.25AM Ar. Oklahoma City		

THE TULSA TEXAN

THE TULSA TEXAN			MEMPHIS—PENSACOLA		
507 Daily	SEE TABLE 10	504 Daily	223-207 Daily	SEE TABLE 21	208-108 Daily
Air-Conditioned Sleeping Cars: Between Tulsa and Dallas (12-sec., D. R.) Between Tulsa and Fort Worth (12-sec., D. R.) Southbound, may be occupied at Dallas and Ft. Worth until 7.30 a.m.; Northbound at 9.30 p.m. Air-Conditioned Chair Cars: Between Tulsa, Denison and Sherman Denison to Dallas COACH SERVICE ALL THE WAY			Air-Conditioned Frisco Sleeping Car: Between Memphis and Pensacola; may be occupied at Memphis until 7.30 a.m. Air-Conditioned Coaches: Between Memphis, Amory and Pensacola Supper Service on the Train		
9.45PM Lv. Tulsa 10.55PM Ar. Okmulgee 1.12AM Ar. Ada 3.55AM Ar. Denison 4.30AM Ar. Sherman 4.12AM Lv. Denison 6.45AM Ar. Dallas 4.10AM Lv. Denison 6.40AM Ar. Fort Worth			7.45AM Lv. Tulsa 6.42AM Ar. Okmulgee 4.26AM Ar. Ada 2.05AM Ar. Denison 12.40AM Ar. Sherman 1.45AM Lv. Denison 11.00PM Ar. Dallas 1.35AM Lv. Denison 11.00PM Ar. Fort Worth		

OIL-BURNING LOCOMOTIVES ON ALL FRISCO PASSENGER TRAINS

ST. LOUIS, SPRINGFIELD, TULSA, OKLAHOMA CITY

7 The Bluebonnet Daily	1 Texas Special Daily	9 Meteor Daily	9 Texas Limited Daily	3 The Will Rogers Daily	5 South-West Limited Daily	Miles	TABLE 1	6 The Will Rogers Daily	4 Meteor Daily	10 Texas Special Daily	2 The Bluebonnet Daily	8 The Bluebonnet Daily																
PM 1.30	PM 5.30	PM 6.30	PM 6.30	PM 11.59	AM 7.30	0.0	Lv (St. Louis, Mo., 2, 4, 5, 6, 12, 14, 16, 21, 26, 27, Tower Grove, 2, 4, 5, Webster Groves, 2 Kirkwood Valley Park Pacific Catawissa Robertsville Moselle St. Clair Sullivan Bourbon Leasburg Cuba, 34 St. James Rolla Newburg Newburg Alhambra Grotto Arlington Jerome Dixon Crocker Swedeberg Richland Stoutland Lebanon Phillipsburg Conway Niangua Marshallfield Strafford Springfield 3, 5, 6, 21 Springfield 29, 30 Brookline Republic Billings Logan Marionville Aurora, 37 Verona Monett, 5, 6 Monett, 5, 6 Pierce City, 6 Berwick Ritchey Granby Neosho Belfast Racine Seneca, Mo. Wyandotte, Okla. Ogeechee Fairland Afton, 8 Afton, 8 Vinita, 2, 8 White Oak, 8 Chelsea, 8 Foyil, 8 Claremore, 8 Verdigris, 8 Catoosa, 8 Dawson, 8 Tulsa, 3, 8, 10, 18 Tulsa, 3, 8, 10, 18 Sapulpa, 8, 10 Kellyville, 8 Bristow, 8 Dewey, 8, 43 Milfay, 8 Stroud, 8 Davenport, 8 Chandler, 8 Warwick, 8 Wellston, 8 Luther, 8 Jones, 8 Spencer, 8 Oklahoma City, Okla., 3, 8, 11, 11	PM 5.55	AM 12.15	AM 8.00	AM 8.30	AM 11.30	PM 5.30	PM 6.30	PM 1.30	Lv (St. Louis, Mo., 1, 4, 5, 6, 12, 14, 16, 21, 26, 27, Tower Grove, 1, 4, 5 Webster Groves, 1 Vinita, 1, 8 Muskogee, 23 McAlester Atoka Durant, Okla., 28 Denison, Tex., 10 Denison, Tex., 10 Greenville Dallas (Highland Park) Dallas (Union Sta.), 5, 10, 32 Dallas (Union Sta.), 5, 10, 32 Waco, 5 Waco, 5 Denton Fort Worth, 5, 10, 31, 32 Fort Worth, 5, 10, 31, 32 Hillsboro Waco, 5 Temple Granger Georgetown Austin, 5 San Marcos New Braunfels San Antonio (So. Pac.) Brownsville, Tex.	PM 5.30	PM 6.40	PM 1.40	Lv (St. Louis, Mo., 1, 4, 5, 6, 12, 14, 16, 21, 26, 27, Tower Grove, 1, 4, 5 Webster Groves, 1 Vinita, 1, 8 Muskogee, 23 McAlester Atoka Durant, Okla., 28 Denison, Tex., 10 Denison, Tex., 10 Greenville Dallas (Highland Park) Dallas (Union Sta.), 5, 10, 32 Dallas (Union Sta.), 5, 10, 32 Waco, 5 Waco, 5 Denton Fort Worth, 5, 10, 31, 32 Fort Worth, 5, 10, 31, 32 Hillsboro Waco, 5 Temple Granger Georgetown Austin, 5 San Marcos New Braunfels San Antonio (So. Pac.) Brownsville, Tex.	PM 5.30	PM 6.40	PM 1.40	Lv (St. Louis, Mo., 1, 4, 5, 6, 12, 14, 16, 21, 26, 27, Tower Grove, 1, 4, 5 Webster Groves, 1 Vinita, 1, 8 Muskogee, 23 McAlester Atoka Durant, Okla., 28 Denison, Tex., 10 Denison, Tex., 10 Greenville Dallas (Highland Park) Dallas (Union Sta.), 5, 10, 32 Dallas (Union Sta.), 5, 10, 32 Waco, 5 Waco, 5 Denton Fort Worth, 5, 10, 31, 32 Fort Worth, 5, 10, 31, 32 Hillsboro Waco, 5 Temple Granger Georgetown Austin, 5 San Marcos New Braunfels San Antonio (So. Pac.) Brownsville, Tex.	PM 5.30	PM 6.40	PM 1.40	Lv (St. Louis, Mo., 1, 4, 5, 6, 12, 14, 16, 21, 26, 27, Tower Grove, 1, 4, 5 Webster Groves, 1 Vinita, 1, 8 Muskogee, 23 McAlester Atoka Durant, Okla., 28 Denison, Tex., 10 Denison, Tex., 10 Greenville Dallas (Highland Park) Dallas (Union Sta.), 5, 10, 32 Dallas (Union Sta.), 5, 10, 32 Waco, 5 Waco, 5 Denton Fort Worth, 5, 10, 31, 32 Fort Worth, 5, 10, 31, 32 Hillsboro Waco, 5 Temple Granger Georgetown Austin, 5 San Marcos New Braunfels San Antonio (So. Pac.) Brownsville, Tex.

ST. LOUIS AND TEXAS

1 Texas Special Daily	9 Texas Limited Daily	7 The Bluebonnet Daily	TABLE 2	2 Texas Special Daily	8 The Bluebonnet Daily
PM 5.30	PM 6.40	PM 1.40	Issue Tickets Reading: FRISCO—M.-K.-T. LINES TEXAS SPECIAL ROUTE OR BLUEBONNET ROUTE	AM 8.30	AM 11.30

Reference Notes for Tables 1, 2 and 3

a Stops to let off revenue passengers from Texas.

b Stops to let off revenue passengers from Springfield and beyond.

c Stops to let off revenue passengers from St. Louis, and to take on revenue passengers for Oklahoma City.

d Stops Fridays and Saturdays only to let off passengers from St. Louis.

e Stops to take on revenue passengers for St. Louis, and to let off revenue passengers for Oklahoma City.

f Stops on signal to take on or let off passengers.

g Stops to let off passengers from Texas.

h Stops on signal to take on passengers for Springfield or beyond.

j Stops on signal to take on passengers for St. Louis and beyond.

k Stops only to let off revenue passengers.

m Stops on signal for revenue passengers.

n Stops to let off revenue passengers from St. Louis, and to take on revenue passengers for Bristow and Oklahoma City.

p Stops on signal to take on revenue passengers for Texas.

t Stops to let off passengers from St. Louis.

u Stops to let off passengers from points south of Springfield.

w Stops to let off passengers for points north of Turrell on the St. Louis Line (see Table 4).

x Stops to let off revenue passengers from Oklahoma City or to take on revenue passengers for Tulsa and beyond.

KANSAS CITY, MEMPHIS, PENSACOLA, BIRMINGHAM AND THE SOUTHEAST

111-103 Daily	105 Kansas City-Fla. Special Daily	107 The Sunnyland Daily	Miles	TABLE 3	108 The Sunnyland Daily	106 Kansas City-Fla. Special Daily	104-112 Daily
PM 10.58	PM 7.30	AM 8.20	0.0	(Kansas City, Mo., 8, 12, 21, 29 Olathe Bonita Ocheltree Spring Hill Hillsdale Paola Henson Fontana LaCygne Boicourt Pleasanton Prescott Fulton Hammond Fort Scott, 8 Fort Scott, 8 Garland Arcadia, Kan., 30 Ardath, Mo. Liberal Iantha Lamar Kenoma Golden City Lockwood South Greenfield Pilgrim Everton Emmet Ash Grove, 46 Bois d'Arc Elwood Nichols, 1 Springfield Springfield (1, 5, 6, 21, 29, 36) Rogersville Fordland Seymour Cedar Gap Mansfield Macomb Norwood Mountain Grove Dunn Cabool Sargent Sterling Willow Springs, 18 Burnham Pomona Olden West Plains Chapin Brandeville Koshkonong Thayer, Mo. Thayer, Mo. Mammoth Sprg., Ark. Hardy Williford Ravenden Imboden Black Rock Portia Hoxie, 16 Sedgwick Bono Jonesboro, 17 Nettleton, 17 Bay Truman Marked Tree, 22 Tyronza Deckerville Gilmore Turrell, 4 Clarkdale, 4 Marion, 4 Bridge Jct., Ark., 4 Memphis, Tenn. Illinois Central R. R. Memphis, Tenn. New Orleans, La.	PM 8.25	AM 7.45	AM 7.12

223 Daily	105 Kansas City-Fla. Special Daily	107 The Sunnyland Daily	201 Daily	Miles	TABLE 3 Continued	108 The Sunnyland Daily	106 Kansas City-Fla. Special Daily	224 Daily	202 Daily
PM 6.25	PM 8.30	AM 9.10	AM 11.15	0.0	(Kansas City, Mo., 8, 12, 21, 29 Springfield, Mo., 1, 5, 6, 21, 29, 30 Oklahoma City, 1, 3, 11 Tulsa, 1, 3, 10, 12 Memphis, Tenn., 4, 21 Memphis, Tenn., 4, 21 Forsythe Capleville, Tenn. Mineral Wells, Miss. Olive Branch Miller Byhalia Victoria Red Banks Mahon Holly Springs Waites Potts Camp Winborn Hickory Flat Myrtle New Albany Wallerville Blue Springs Sherman Belden Tupelo Plantersville Nettleton Amory, Miss., 21 Amory, Miss., 21 Amory, Miss., 21 Quincy Greenwood Springs Gatman, Miss. Sulligent, Ala. Winfield Glen Allen Carbon Hill Pocahontas Jasper Cordova Dora, 45 Quinton Lindbergh Pratt City, 44 Birmingham, Ala., 4 Birmingham (Sou. Ry.) Atlanta, Ga. (CT) Atlanta, Ga. (CT) Macon (E. T.) Jesup, Ga. Brunswick, Ga. Jacksonville, Fla. Jacksonville (S. A. L.) Atlanta, Ga. (CT) Jacksonville (F. E. C.) Miami Jacksonville (S. A. L.) Miami Jacksonville (S. A. L.) Tampa St. Petersburg Sarasota Jacksonville (A. C. L.) Tampa Sarasota Jacksonville St. Petersburg	PM 8.25	AM 7.45	AM 7.05	AM 6.30

MIAMI-HAVANA SERVICE
Via P. & O. S. S. Co.

S. S. Florida

Lv Miami Tue.-Fri. 7.00 PM Tue.-Fri. 9.00 AM Wed.-Sat. 7.00 PM Sun.-Thur. 8.00 AM Mon.-Fri. 7.00 AM

For reference notes to Table 3, see page 6.

TULSA, DALLAS AND FORT WORTH

Table 10: Tulsa, Dallas and Fort Worth. Columns include route numbers (509, 507, 504, 510), direction (Daily, PM, AM), miles, and station names with arrival/departure times.

OKLAHOMA CITY AND QUANAH

Table 11: Oklahoma City and Quanah. Columns include route numbers (409, 410), direction (Daily, PM, AM), miles, and station names with arrival/departure times.

TULSA, ENID AND VERNON

Table 12: Tulsa, Enid and Vernon. Columns include route numbers (9-609, 610-10), direction (Daily, PM, AM), miles, and station names with arrival/departure times.

BEAUMONT AND ENID

Table 13: Beaumont and Enid. Columns include route numbers (635, 630), direction (Daily, PM, AM), miles, and station names with arrival/departure times.

ST. LOUIS, CAPE GIRARDEAU, KENNETT AND CARUTHERSVILLE

Table 14: St. Louis, Cape Girardeau, Kennett and Caruthersville. Columns include route numbers (807-881, 882-808), direction (Daily, PM, AM), miles, and station names with arrival/departure times.

KENNETT AND LEACHVILLE

Table 15: Kennett and Leachville. Columns include route numbers (811, 812), direction (Daily, PM, AM), miles, and station names with arrival/departure times.

Reference Notes for Tables 14, 15, 16 and 17.

f Stops on signal v Motor Car m Mixed Train

CAPE GIRARDEAU AND HOXIE

Table 16: Cape Girardeau and Hoxie. Columns include route numbers (805, 806, 873, 875), direction (Daily, PM, AM, Ex. Sun.), miles, and station names with arrival/departure times.

BLYTHEVILLE AND JONESBORO

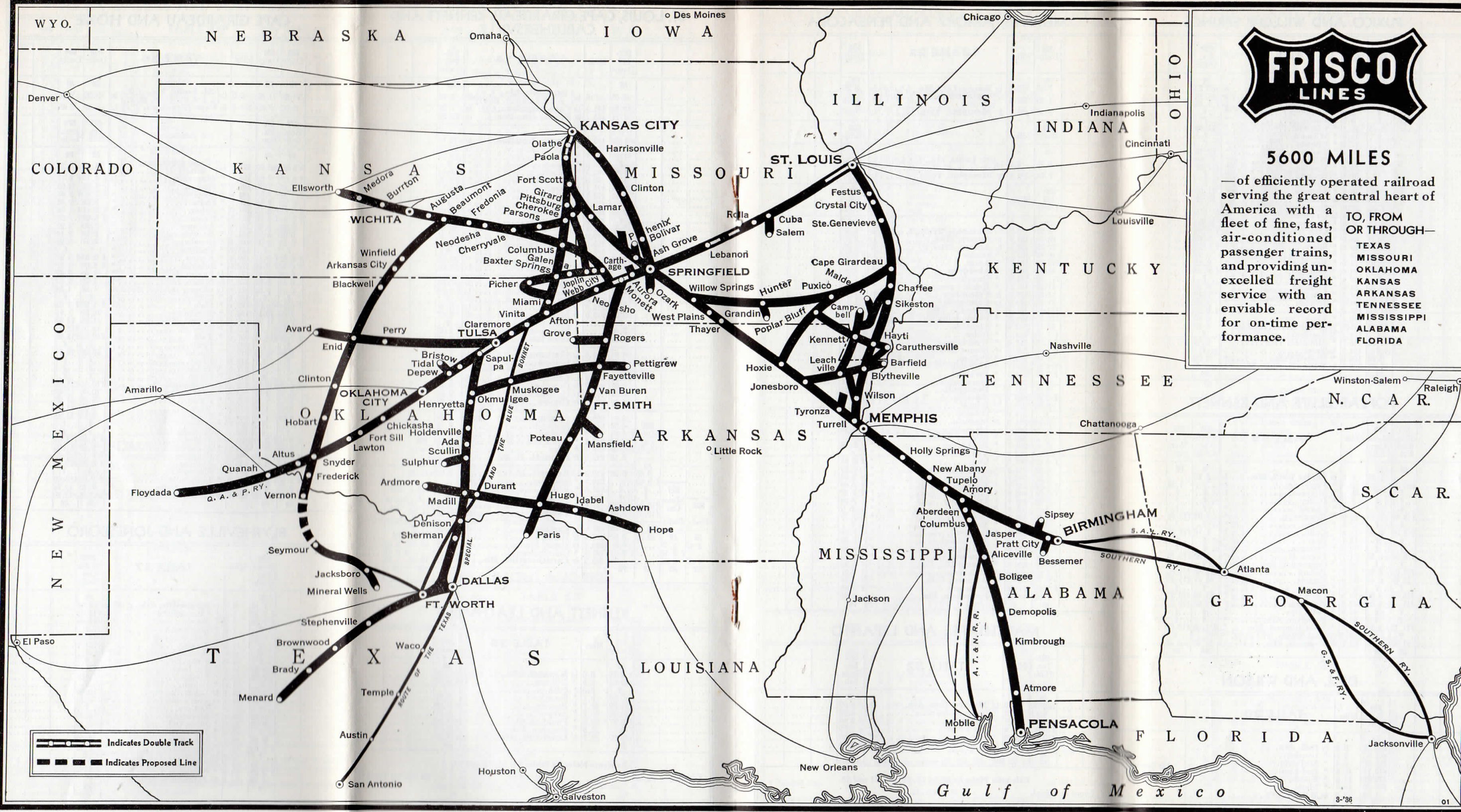
Table 17: Blytheville and Jonesboro. Columns include route numbers (899, 898), direction (Motor Car Daily, PM, AM), miles, and station names with arrival/departure times.



5600 MILES

—of efficiently operated railroad serving the great central heart of America with a fleet of fine, fast, air-conditioned passenger trains, and providing unexcelled freight service with an enviable record for on-time performance.

TO, FROM OR THROUGH—
 TEXAS
 MISSOURI
 OKLAHOMA
 KANSAS
 ARKANSAS
 TENNESSEE
 MISSISSIPPI
 ALABAMA
 FLORIDA



— — — — — Indicates Double Track
 - - - - - Indicates Proposed Line

PUXICO AND WILLOW SPRINGS

Table 18: Puxico, Mo., 16. Table with columns for Ex. Sun., Miles, and Ex. Sun. containing train schedules.

POPLAR BLUFF AND KENNETT

Table 19: Poplar Bluff, Mo., 16. Table with columns for Mon. Wed. Fri., Motor Car Daily, Miles, and Tue. Thur. Sat. containing train schedules.

DELL AND WILSON

Table 20: Dell, Ark., 17. Table with columns for Ex. Sun., Miles, and Ex. Sun. containing train schedules.

No Service Northbound

MEMPHIS, AMORY AND PENSACOLA

Table 21: Memphis, Tenn., 3, 4. Table with columns for Daily, Miles, and Daily containing train schedules.

MARKED TREE AND LEPANTO

Table 22: Marked Tree, Ark., 3. Table with columns for Tue. Thurs. Sat., Miles, and Tue. Thurs. Sat. containing train schedules.

Reference Notes for tables 18, 19, 20, 21 and 22.

f Stops on signal. m Mixed train.

FAYETTEVILLE, MUSKOGEE AND OKMULGEE

Table 23: Fayetteville, Ark., 5, 24. Table with columns for Motor Car Daily, Miles, and Motor Car Daily containing train schedules.

FAYETTEVILLE AND PETTIGREW

Table 24: Fayetteville, Ark., 5, 23. Table with columns for Mon. Wed. Fri., Miles, and Mon. Wed. Fri. containing train schedules.

ROGERS AND GROVE

Table 25: Rogers, Ark., 5. Table with columns for Tue. Thurs. Sat., Miles, and Tue. Thurs. Sat. containing train schedules.

Reference Notes for tables 23, 24, 25, 26, 27 and 28.

v Motor Car. f Stops on signal. m Mixed train.

HUGO AND ARDMORE

Table 26: Hugo, Okla., 5, 27. Table with columns for Daily, Miles, and Daily containing train schedules.

HUGO AND HOPE

Table 27: Hugo, Okla., 5, 26. Table with columns for Daily, Miles, and Daily containing train schedules.

FORT SMITH AND MANSFIELD

Table 28: Ft. Smith, Ark., (Garrison Ave.). Table with columns for Mon. Wed. Fri., Miles, and Mon. Wed. Fri. containing train schedules.

KANSAS CITY AND SPRINGFIELD, VIA BELTON AND BOLIVAR

Table 29: Kansas City and Springfield, via Belton and Bolivar. Includes columns for Motor Car Daily, Miles, and times for various stations like Centropolis, Dodson, Holmes, etc.

ARCADIA AND CHERRYVALE

Table 30: Arcadia and Cherryvale. Includes columns for Motor Car Daily, Miles, and times for stations like Coalvale, Howe, Barber, etc.

Reference Notes for Tables 29, 30, 31, 32 and 33.

f Stop on signal. v Motor Car. || Stops for meals. z Stops to take on and let off passengers.

FORT WORTH, BROWNWOOD AND MENARD

Table 31: Fort Worth, Brownwood and Menard. Includes columns for Daily, Miles, and times for stations like Ft. Worth, Primrose, Plover, etc.

SEYMOUR, MINERAL WELLS AND DALLAS

Table 32: Seymour, Mineral Wells and Dallas. Includes columns for Daily, Miles, and times for stations like Seymour, Rendham, Westover, etc.

QUANAH-FLOYDADA

Table 33: Quanah-Floydada. Includes columns for Daily, Miles, and times for stations like Quanah, Acme, Lazare, etc.

CUBA AND SALEM

Table 34: Cuba and Salem. Includes columns for Ex. Sun., Miles, and times for stations like Cuba Mo., Birds Nest, Steelville, etc.

CHERRY VALLEY JUNCTION AND CHERRY VALLEY

Table 35: Cherry Valley Junction and Cherry Valley. Includes columns for Miles, and times for stations like Cherry Valley Jct., Elayer, etc.

SPRINGFIELD AND OZARK

Table 36: Springfield and Ozark. Includes columns for Miles, and times for stations like Springfield, Langston, Galloway, etc.

AURORA AND MT. VERNON

Table 37: Aurora and Mt. Vernon. Includes columns for Miles, and times for stations like Aurora, Mount Vernon, Miller, etc.

Note.—Local freight train, carrying passengers, Aurora to Mount Vernon and return, leaves Aurora, daily except Sunday, between 12.00 noon and 1.00 p. m.

GREENFIELD AND SOUTH GREENFIELD

Table 38: Greenfield and South Greenfield. Includes columns for Miles, and times for stations like Greenfield, So. Greenfield, etc.

BLYTHEVILLE AND BARFIELD

Table 40: Blytheville and Barfield. Includes columns for Miles, and times for stations like Blytheville, Armored, Barfield, etc.

QUAPAW AND BAXTER SPRINGS

Table 41: Quapaw and Baxter Springs. Includes columns for Miles, and times for stations like Quapaw, Century, Cardin, etc.

SHERMAN AND IRVING

Table 42: Sherman and Irving. Includes columns for Miles, and times for stations like Sherman, Hilton, Dorchester, etc.

DEPEW AND TIDAL

Table 43: Depew and Tidal. Includes columns for Miles, and times for stations like Depew, Mercer, Simmons, etc.

PRATT CITY AND BESSEMER

Table 44: Pratt City and Bessemer. Includes columns for Miles, and times for stations like Pratt City, Ensley, Woodward, etc.

DORA AND SIPSEY

Table 45: Dora and Sipsey. Includes columns for Miles, and times for stations like Dora, Bergens, Lorton, etc.

ASH GROVE AND PHENIX

Table 46: Ash Grove and Phenix. Includes columns for Miles, and times for stations like Ash Grove, Phenix, etc.

SELIGMAN, EUREKA SPRINGS AND HARRISON (Missouri and Arkansas Ry.)

Table 47: Seligman, Eureka Springs and Harrison. Includes columns for Daily, Miles, and times for stations like Seligman, Eureka Springs, Harrison, etc.

Reference Notes for Tables 34 to 47, inclusive. f Stops on signal. m Mixed train. All a.m. time is shown in light figures; p.m. time in heavy figures.

AIR LINE CONNECTIONS

AT ST. LOUIS, KANSAS CITY, MEMPHIS,
DALLAS, FT. WORTH, OKLAHOMA CITY AND WICHITA

For information as to service, inquire of any Frisco Lines representative listed on page 1 of this folder

FROM:	To:	COMPANY:
ST. LOUIS	Springfield..... Ill.	American Airlines
	Peoria..... " "	"
	Chicago..... " "	"
	Detroit..... Mich.	"
	Buffalo..... N. Y.	"
	New York..... " "	"
	Boston..... Mass.	"
	Springfield..... Ill.	Chicago and Southern Air Lines
	Peoria..... " "	"
	Chicago..... " "	"
KANSAS CITY	Burlington..... Iowa	Braniff Airways
	Chicago..... Ill.	"
	Wichita..... Kan.	T W A Inc.
	Amarillo..... Tex.	"
	Albuquerque..... N. M.	"
	Winslow..... Ariz.	"
	Los Angeles..... Calif.	"
MEMPHIS	Greenwood..... Miss.	Chicago and Southern Air Lines
	Jackson..... " "	"
	New Orleans..... La.	"
DALLAS FT. WORTH	Abilene..... Texas	American Airlines
	Big Springs..... " "	"
	El Paso..... " "	"
	Douglas..... Ariz.	"
	Tucson..... " "	"
	Phoenix..... " "	"
DALLAS FT. WORTH	Waco..... Texas	Braniff Airways
	Austin..... " "	"
	Houston..... " "	"
	Galveston..... " "	"
	San Antonio..... " "	"
	Corpus Christi..... " "	"
OKLAHOMA CITY WICHITA	Waco..... Texas	Braniff Airways
	Austin..... " "	"
	Houston..... " "	"
	Galveston..... " "	"
	San Antonio..... " "	"
	Corpus Christi..... " "	"

... ANOTHER ... RAILROAD CONVENIENCE

● It is now possible to secure American Express Travelers Cheques at the same time you purchase your railroad ticket. This convenience for travelers has become a part of the service at many of our ticket offices. Travelers Cheques may be spent on dining cars, at hotels and stores, as you would spend ordinary currency.

● The advantage of carrying Travelers Cheques rather than cash lies in the fact that if the Cheques are lost or stolen before the second identifying signature is affixed, the amount involved is refunded. They can be secured in denominations of \$10, \$20, \$50 and \$100, at the nominal charge of 75¢ for each \$100 purchased.

SUPPLEMENTARY INDEX TO STATIONS

The following stations are on the line indicated, but are not listed in the table; the distance shown is from starting point of table.

STATION	Distance From Starting Point	Table Number	Stop Made by Train Number
Adamsville, Ala.	723.2	3	201-202
Allenton, Mo.	29.8	1	5
Anaconda, Mo.	57.2	1	5
Bazemore, Ala.	664.2	3	201-202
Beaverton, Ala.	642.9	3	201-202
Benoit, Ala.	704.6	3	201-202
Bessie Junction, Ala.	716.9	3	201-202
Brush Creek, Mo.	187.5	1	5
Cedrom, Ala.	681.0	3	201-202
Chisen, Ala.	676.9	3	201-202
Clarke, Ala.	671.5	3	201-202
Crescent, Mo.	24.9	1	5-6
Crews, Ala.	639.2	3	201-202
Diggins, Mo.	230.9	3	103-104
Dillon, Mo.	105.7	1	5
Edward, Kan.	102.0	3	103
Eldridge, Ala.	669.9	3	201-202
Eureka, Mo.	27.2	1	5
Fanning, Mo.	91.4	1	5
Franka, Mo.	129.0	1	5
Hancock, Mo.	140.1	1	5
Hillard, Ala.	688.2	3	201-202
Hineckley, Tex.	580.5	5	709
Jericho, Ark.	467.7	3	107-108
Lenexa, Kan.	13.1	3	x
McCullum, Ala.	691.6	3	201-202
Many Islands, Ark.	350.9	3	107-108
Merriam, Kan.	7.6	3	x
Morey, Okla.	336.4	1	5-6
Northview, Mo.	220.1	1	5-6
Oakwood, Ala.	726.0	3	201-202
Old Orchard, Mo.	8.7	1	5
Palos, Ala.	716.0	3	201-202
Ronati, Mo.	95.2	1	5-6
Rosedale, Kan.	3.2	3	x
Samonet, Ala.	705.7	3	201-202
Selma, Mo.	42.7	4	807-808
Sleeper, Mo.	174.3	1	5-6
Stanton, Mo.	62.3	1	5-6
Surles, Okla.	344.4	1	5
Townley, Ala.	683.8	3	201-202
Tulot, Ark.	440.2	3	103-104
Turner, Mo.	211.1	3	201-202
Walden, Miss.	617.1	3	201-202
Wise Gap, Miss.	622.3	3	201-202
Wyatt, Ala.	711.0	3	201-202

X—No. 111 stops on signal for passengers to Olathe and stations south.



Pickup

En Route

Delivery

FAST SERVICE FOR PACKAGES

DEPENDABLE through service from sender to receiver, with pick-up and delivery in principal cities and towns, is available at the nearest Express Agency on this Railroad.

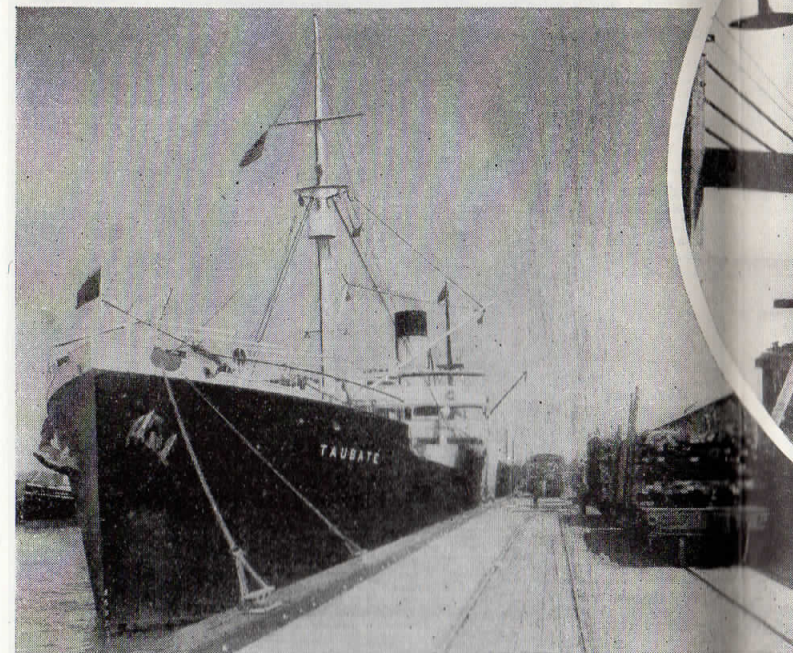
We give a receipt on collection and take a receipt on delivery. Ask our representative about this fast, convenient way of sending packages.

RAILWAY EXPRESS AGENCY

As an added convenience, express packages may be left with Western Union or will be called for by their messengers without extra charge.

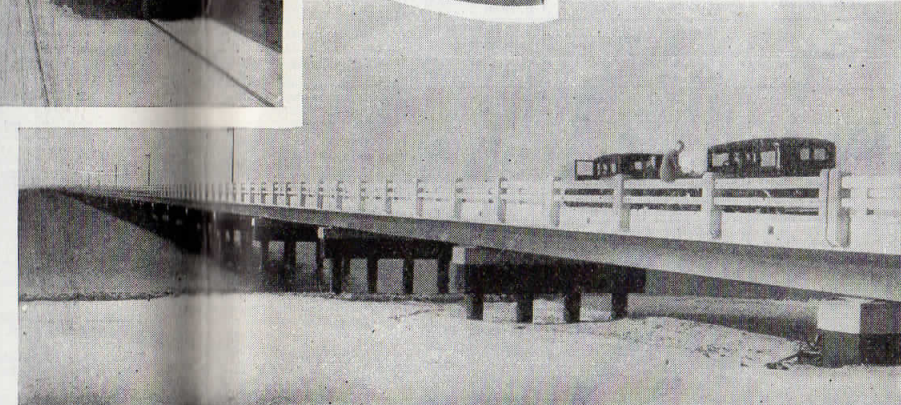


● Pensacola's famous white sand beach sloping gently into the warm, blue waters of the Gulf of Mexico.



● Frisco tracks run to the very water's edge at Pensacola. Here we see the loading of lumber for export.

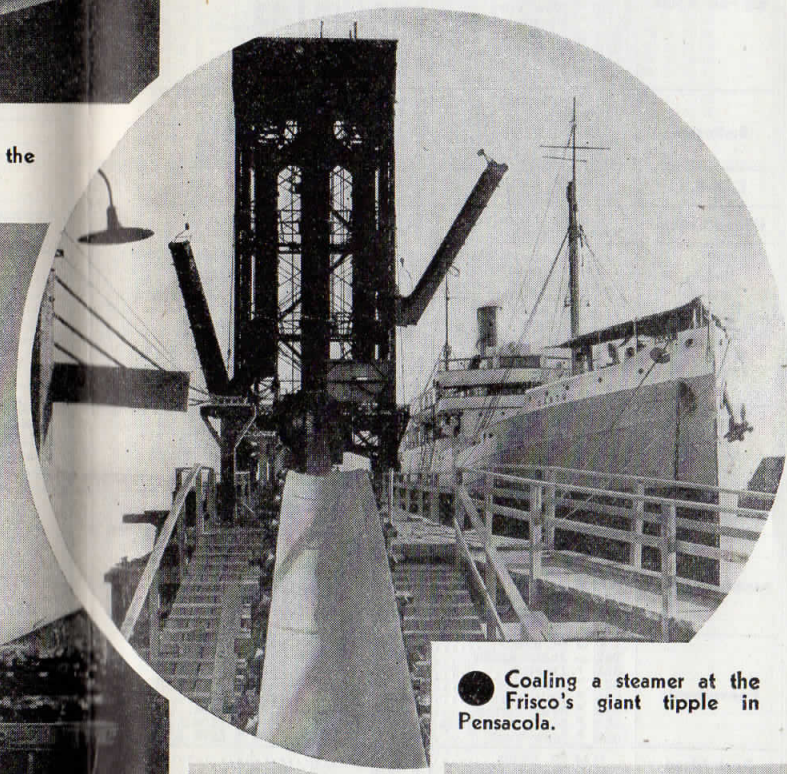
● New concrete causeway across Pensacola Bay connects Pensacola with beautiful Santa Rosa Island.



PENSACOLA

—on the Florida Gulf Coast

● —where the Frisco meets the sea. Through Pensacola's deep water harbor passes merchandise to and from all parts of the world. Pensacola is also a glorious play-ground for the vacationist, with refreshing sea air and semi-tropical warmth the year 'round.



● Coaling a steamer at the Frisco's giant trolley in Pensacola.

CONNECTIONS AT ST. LOUIS (Union Station)

All Roads use Union Station except Illinois Terminal R. R. System. Union Station and Illinois Terminal R. R. Station are one mile apart.

The Alton R. R.	0 Lv St. Louis	*8.58 AM	*1205 PM	*4.00 PM	*1145 PM	*1230 AM
	283 Ar Chicago	1.53 PM	6.15 PM	9.45 PM	6.45 AM	7.45 AM
Baltimore & Ohio	0 Lv St. Louis	*9.15 AM	*1250 PM	*1128 PM		
	324 Ar Louisville	9.15 PM	6.55 AM			
Big Four Route	0 Lv St. Louis	*9.15 AM	*1200 PM	*6.00 PM	*9.30 PM	*1132 PM
	181 Ar Terre Haute	12.24 PM	3.25 PM	9.27 PM	2.25 AM	2.55 AM
Burlington	0 Lv St. Louis	*8.45 AM	*8.50 PM	*1159 PM		
	279 Ar Kansas City	7.50 PM	7.50 AM	7.45 AM		
C. & E. I.	0 Lv St. Louis	*1232 PM	*1200 PM			
	200 Ar Chicago	5.32 PM	6.55 AM			
Illinois Central	0 Lv St. Louis	*1215 PM	*1205 AM	*8.55 AM		
	293 Ar Chicago	5.45 PM	7.30 AM	1.50 PM		
Illinois Terminal Railroad System Depot, 710 North 12th Blvd.	0 Lv St. Louis	1205 AM	4.10 AM	8.40 AM	1.10 PM	6.35 PM
	Ar Staunton	1.41 AM	5.35 AM	9.43 AM	2.14 PM	6.33 PM
L. & N.	0 Lv St. Louis	*8.15 AM	*4.15 PM	*9.35 PM	*1040 PM	
	165 Ar Evansville	12.60 PM	8.35 PM	2.15 AM	2.40 AM	
Missouri Pacific	0 Lv St. Louis	*9.00 AM	*3.25 PM	*5.15 PM	*1159 PM	
	282 Ar Kansas City	4.05 PM	9.25 PM	11.56 PM	7.15 AM	
Mobile & Ohio	0 Lv St. Louis	*8.50 AM	*1000 PM			
	3 Ar East St. Louis	9.05 AM	10.19 PM			
Pennsylvania	0 Lv St. Louis	*9.10 AM	*1200 PM	*3.00 PM	*6.00 PM	*1203 AM
	242 Ar Indianapolis	1.40 PM	4.23 PM	8.22 PM	10.45 PM	5.00 AM
Rock Island	0 Lv St. Louis	*8.00 AM				
	298 Ar Kansas City	5.10 PM				
Southern	0 Lv St. Louis	*8.40 AM	*1030 PM			
	87 Ar Mt. Vernon	11.20 AM	1.00 AM			
N. Y. C. & St. L. Nickel Plate Road	0 Lv St. Louis (C.T.)	*6.10 PM				
	134 Ar Charleston	9.17 PM				
Wabash	0 Lv St. Louis	8.50 AM	*1200 PM	*1155 PM		
	280 Ar Chicago	1.45 PM	6.30 PM	7.20 AM		

CONNECTIONS AT KANSAS CITY (Union Station)

The Alton R. R.	0 Lv Kansas City	*8.55 PM				
	483 Ar Chicago	8.25 AM				
Chicago Great Western	0 Lv Kansas City	*5.30 PM	*1130 PM			
	220 Ar Des Moines	11.05 PM	6.30 AM			
Burlington	0 Lv Kansas City	*1100 AM	*8.15 PM	*1159 PM		
	279 Ar St. Louis	9.15 PM	7.05 AM	7.45 AM		
Atchison, Topeka & Santa Fe	0 Lv Kansas City	*8.15 AM	*2.30 PM	*1158 PM		
	196 Ar Omaha	1.50 PM	6.20 PM	7.00 AM		
Wabash	0 Lv Kansas City	*8.50 AM	*4.00 PM	*1155 PM		
	131 Ar Moberly	12.10 PM	6.39 PM	3.20 AM		
Chicago, Milwaukee, St. Paul and Pacific	0 Lv Kansas City	*7.15 PM	*8.30 AM			
	33 Ar Excelsior Springs	8.10 PM	9.40 AM			
Rock Island	0 Lv Kansas City	*5.45 PM	*9.00 PM	*9.20 AM		
	515 Ar Chicago	8.45 AM	9.00 AM	9.45 PM		
Missouri Pacific	0 Lv Kansas City	*9.40 PM				
	622 Ar Pueblo	11.40 AM				
Union Pacific	0 Lv Kansas City	*5.30 PM	*1010 PM			
	640 Ar Denver	7.30 PM	1.15 PM			

Reference Notes

* Daily. † Daily except Sunday. C.T. Central Time.
 A Sleeping cars only. D Extra fare. Sunday only.
 B Extra fare. (Sleeping cars only.) E.T. Eastern Time.
 F Leave Kansas City and Albuquerque on Wednesdays only; arrive Los Angeles Thursdays only.

CONNECTIONS AT MEMPHIS

Grand Central Station and Union Station are two blocks apart. Frisco trains use the Grand Central Station.

Illinois Central Grand Central Station	0 Lv Memphis	*9.00 AM	*6.50 PM	*1045 PM	*1220 AM
	213 Ar Jackson	2.52 PM	1.30 AM	4.10 AM	5.00 AM
Yazoo & Mississippi Valley Grand Central Station	0 Lv Memphis	*5.15 PM	*8.40 AM		
	221 Ar Vicksburg	1.30 AM	4.35 PM		
Louisville & Nashville Union Station	0 Lv Memphis	*7.50 AM	*1255 PM	*9.15 PM	
	380 Ar Louisville	4.50 PM	2.00 AM	7.10 AM	
Missouri Pacific Union Station	0 Lv Memphis	*8.00 AM	*6.40 PM	*1030 PM	
	148 Ar Little Rock	9.20 PM	7.05 AM	11.55 AM	
N. C. & St. L. Union Station	0 Lv Memphis	*1130 PM	*2.25 PM	*7.30 AM	
	238 Ar Nashville	6.20 PM	9.40 PM	1.40 PM	
Rock Island Grand Central Station	0 Lv Memphis	*8.30 AM	*5.00 PM	*1015 PM	
	133 Ar Little Rock	11.15 AM	8.25 PM	1.10 AM	
St. L. S. W. Union Station	0 Lv Memphis	*7.55 AM	*1035 PM		
	104 Ar Stuttgart	10.43 AM	1.09 AM		
Southern Union Station	0 Lv Memphis	*9.25 PM	*8.40 AM		
	311 Ar Chattanooga	5.55 AM	6.00 PM		

CONNECTIONS AT DALLAS (Union Station)

Southern Pacific Lines	0 Lv Dallas	*1235 PM	*9.45 PM	*1145 PM
	34 Ar Ennis	1.26 PM	10.30 PM	12.45 AM
Burlington—Rock Island R. R.	0 Lv Dallas	*7.55 AM	*7.00 PM	
	91 Ar Teague	10.30 AM	8.45 PM	
Missouri-Kansas-Texas	0 Lv Dallas	*9.35 AM	*1230 PM	*1100 PM
	100 Ar Waco	11.50 AM	3.20 PM	1.25 AM
St. L. S. W. Cotton Belt Route	0 Lv Dallas	*8.00 AM	*6.00 PM	
	60 Ar Greenville	9.35 AM	7.17 PM	2.43 AM
Texas & Pacific	0 Lv Dallas	*1220 PM	*8.55 PM	
	646 Ar El Paso	7.30 AM	5.30 PM	

CONNECTIONS AT BIRMINGHAM

L. & N. Station and Terminal Station are about one mile apart. A. B. C. Station and Terminal Station are about three miles apart. Frisco trains use the Terminal Station.

A. B. & C. A. B. C. Station	0 Lv Birmingham	*3.25 PM			
	76 Ar Talladega	6.13 PM			
Central of Georgia Terminal Station	0 Lv Birmingham	*7.40 AM		4.30 PM	4.40 PM
	49 Ar Childersburg	8.53 AM		5.55 PM	5.55 PM
Louisville & Nashville L. & N. Station	0 Lv Birmingham	*7.50 AM	*3.05 PM	*9.25 PM	*6.30 AM
	97 Ar Montgomery	10.05 AM	4.00 PM	11.28 PM	9.45 AM
Seaboard Air Line Terminal Station	0 Lv Birmingham	*1201 PM	*4.00 PM	*1155 PM	*7.15 AM
	167 Ar Atlanta (C.T.)	5.20 PM	8.40 PM	5.55 AM	11.50 AM

CONNECTIONS AT FORT WORTH

Union Station and T. & P. Station are four blocks apart. Joint Frisco-Katy trains "Texas Special", "Bluebonnet" and "Texas Limited" between St. Louis and Texas and "Oil Fields Special" between Tulsa, Dallas and Ft. Worth use the T. & P. Station. Other Frisco trains use the Union Station.

Southern Pacific Lines Union Station	0 Lv Fort Worth	*1125 AM	*1100 PM
	58 Ar Ennis	1.10 PM	12.40 AM
Gulf, Colorado & Santa Fe Union Station	0 Lv Fort Worth	*8.00 AM	*1055 PM
	172 Ar Milano	12.44 PM	3.25 AM
Chicago, Rock Island & Gulf Union Station	0 Lv Fort Worth	*2.30 PM	*1120 PM
	99 Ar Graham	11.50 AM	16.00 AM
Fort Worth & Denver City T. & P. Station	0 Lv Fort Worth	*1030 AM	*1105 PM
	114 Ar Wichita Falls	1.30 PM	3.40 PM
Missouri Pacific Lines T. & P. Station	0 Lv Fort Worth	*1130 PM	8.00 AM
	295 Ar Houston	7.05 AM	5.10 PM
Missouri-Kansas-Texas T. & P. Station	0 Lv Fort Worth	*9.30 AM	*1115 PM
	89 Ar Waco	11.50 AM	1.20 AM
Texas & Pacific T. & P. Station	0 Lv Fort Worth	*8.30 AM	*1.45 PM
	202 Ar Sweetwater	2.30 PM	7.20 PM

Reference Notes

* Daily. † Daily, except Sunday. ☉ All-Pullman. ⊕ Flag stop.
 A All Pullman, extra fare train. ⊕ Interurban. ● Bus.
 B On Sundays arrive 9.25 am. E.T. Eastern Time.

FOR **All 'round**



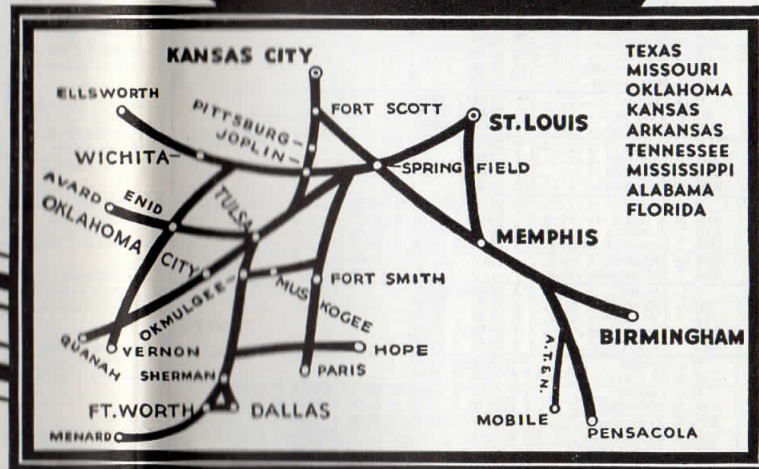
FREIGHT SERVICE
FRISCO FIRST

FREE PICK-UP & DELIVERY
AT ALL STATIONS

THE **FLASH**

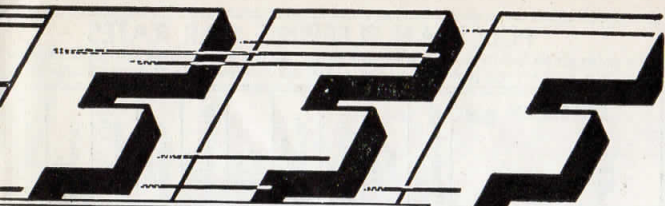
FASTEST
MERCHANDISE
SERVICE—
ST. LOUIS to OKLAHOMA

Lv ST. LOUIS 7:30 P. M.
Ar TULSA (Next Day) 8:30 A. M.
Ar OKLAHOMA CITY 12:30 P. M.



NO SHIPMENT TOO LARGE
NO PACKAGE TOO SMALL

for **FRISCO FASTER FREIGHT**



SAINT LOUIS
TO AND FROM WEST AND SOUTHWEST

No. 35 and connections	No. 33 and connections	No. 31 and connections	ALL TRAINS SHOWN RUN DAILY	No. 32 and connections	No. 30 and connections	No. 38 and connections
1.15AM Mon. 5.00PM Mon. 9.00PM Mon.	11.30PM Mon. 8.30AM Tue. 11.45AM Tue.	8.30PM Mon. 4.20AM Tue. 6.40AM Tue.	Lv. St. Louis Ar. Springfield Ar. Monett Ar. Joplin Ar. Tulsa Ar. Tulsa Ar. Sherman Ar. Dallas Ar. Ft. Worth Ar. Oklahoma City Ar. Quanah Ar. Tulsa Ar. Enid Ar. Avard Ar. Monett Ar. Ft. Smith Ar. Paris Ar. Hope Ar. Monett Ar. Cherryvale Ar. Neodesha Ar. Wichita Ar. Ellsworth	9.00PM Tue. 11.35AM Tue. 9.30AM Tue.	4.00AM Wed. 4.15PM Tue. 2.00PM Tue.	4.00PM Wed. 11.55PM Tue. 10.00PM Tue.
11.15PM Mon. 7.00AM Tue. 7.00PM Tue.	6.15PM Tue. 7.15PM Tue. 3.45AM Wed. 7.45AM Wed. 9.15AM Wed. 3.00AM Wed.	11.00AM Tue. 11.15AM Tue. 12.01PM Tue. 10.30PM Tue. 4.30AM Wed. 5.30AM Wed.		4.00AM Tue. 3.00AM Tue. 6.30PM Mon.		11.20AM Tue. 10.30AM Tue. 3.00AM Tue. 7.45PM Mon. 10.00PM Mon.
10.15PM Mon. 6.00AM Tue. 7.30AM Tue. 1.35PM Tue.	10.30PM Tue. 5.45AM Wed. 11.20AM Wed.	8.15PM Tue. 3.00AM Wed. 11.20AM Wed.		9.15PM Mon. 1.30AM Tue. 6.30PM Mon. 11.40AM Mon.		12.30PM Tue. 4.15AM Tue. 3.15AM Tue. 9.00PM Mon. 1.35PM Mon.

+ Connects with train 32 out of Tulsa.

KANSAS CITY
TO AND FROM SOUTHWEST

No. 137 and connections	No. 139 and connections	No. 133 and connections	ALL TRAINS SHOWN RUN DAILY	No. 130 and connections	No. 132 and connections	No. 138 and connections
7.35PM Mon. 10.30PM Mon. 3.00AM Tue.	7.45PM Mon. 10.45PM Mon. 6.05AM Tue. 8.30AM Tue.	9.00AM Mon. 11.59AM Mon.	Lv. Kansas City Ar. Ft. Scott Ar. Joplin Ar. Tulsa Ar. Sherman Ar. Dallas Ar. Ft. Worth Ar. Oklahoma City Ar. Quanah Ar. Neodesha Ar. Wichita Ar. Ellsworth Ar. Ft. Smith	8.00AM Tue. 4.50AM Tue.	5.30PM Tue. 1.30PM Tue. 12.15AM Tue.	1.00AM Wed. 7.45PM Tue.
	10.30PM Tue. 4.30AM Wed. 5.30AM Wed.	6.15PM Mon. 3.45AM Tue. 7.45AM Tue. 9.15AM Tue.		9.00PM Mon. 12.30PM Mon. 7.00AM Mon. 8.00AM Mon.		11.20AM Tue. 3.00AM Tue. 7.45PM Mon. 10.00PM Mon.
	5.45PM Tue. 8.00AM Wed.	3.00AM Tue. 9.00PM Mon. 1.35PM Tue.		11.00AM Mon. 6.45PM Sun.	9.15PM Mon.	11.59AM Tue. 4.30AM Tue. 1.35PM Mon.
	3.30PM Tue. 3.00AM Wed. 9.00AM Wed.	7.00AM Tue.			11.40AM Tue. 9.00PM Mon. 1.35PM Mon.	7.30PM Sun.

o Connects with train 136 at Ft. Scott, arriving Kansas City 11.59 AM.
★ Connects with train 134 at Ft. Scott, arriving Kansas City 4.00 AM.

BIRMINGHAM
TO AND FROM KANSAS CITY, ST. LOUIS AND SOUTHWEST

No. 232 and connections	No. 134 and connections	No. 136 and connections	ALL TRAINS SHOWN RUN DAILY	No. 135 and connections	No. 131 and connections	No. 237 and connections
6.00PM Sun. 6.10PM Mon.	7.00PM Mon. 5.00AM Tue.	3.00PM Mon. 12.30AM Tue.	Lv. Birmingham Ar. Pensacola Ar. Memphis Ar. Memphis Ar. Springfield Ar. Kansas City Ar. Memphis Ar. St. Louis Ar. Springfield Ar. Joplin Ar. Wichita Ar. Tulsa Ar. Oklahoma City Ar. Dallas Ar. Ft. Worth	8.30PM Wed. 3.00AM Wed.	3.00AM Wed. 4.30PM Tue.	11.30AM Wed. 11.00PM Wed. 10.00PM Tue.
1.00AM Mon. 1.00PM Tue.	6.00AM Tue. 8.00PM Tue. 4.00AM Wed.	8.30PM Mon. 8.00AM Tue. 5.30PM Tue.		7.00AM Wed. 6.00PM Tue. 9.30AM Tue.	7.30AM Wed. 7.30PM Tue.	
	4.40AM Wed. 7.20AM Wed. 1.40AM Thur. 11.15AM Wed.	9.30AM Tue. 3.00AM Wed. 7.15PM Tue.		11.35AM Tue. 6.05AM Tue.	11.55PM Mon.	
	1.40AM Thur. 11.15AM Wed. 5.45PM Wed. 4.30AM Thur. 5.30AM Thur.	1.00PM Tue. 1.00PM Tue. 9.30AM Tue. 3.00AM Wed. 7.15PM Tue. 3.00AM Wed. 7.45AM Wed. 9.15AM Wed.		9.00PM Mon. 4.00AM Tue. 9.15PM Mon. 7.00AM Mon. 8.00AM Mon.	11.20AM Mon.	7.45PM Sun. 10.00PM Sun.



CONDENSED
FREIGHT
SCHEDULES

