

SUMMER—1961

# L&N

THE DIXIE LINE

## PASSENGER TRAIN TIME TABLES

### LOUISVILLE AND NASHVILLE RAILROAD

JULY 23, 1961

SUMMER—1961

# L&N

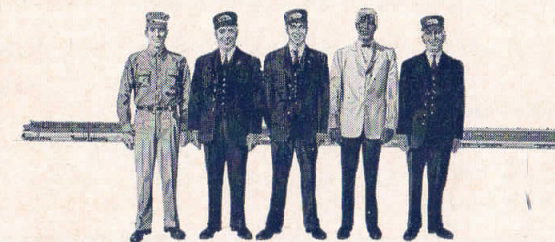
THE DIXIE LINE

## PASSENGER TRAIN TIME TABLES

### LOUISVILLE AND NASHVILLE RAILROAD

JULY 23, 1961

## ON THE L&N, WE ARE PROUD TO RECEIVE LETTERS LIKE THESE



I am sure more of us would go by train if we could look forward to the type treatment we had on The Humming Bird.

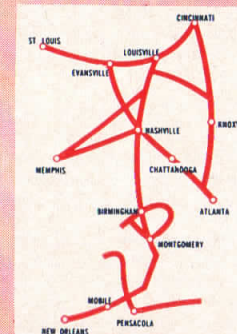
*The food in the diners was excellent, and that complimentary cup of coffee the waiter served me in my roomette was absolutely "the meet!"*

*We enjoyed our trips very much. Thanks for sending us on The Pan; we were about to drive.*

*I have not at any time before received the special attention that was accorded me on The Pan-American.*

*May I tell you how much I enjoyed my rail trip to Cincinnati? My trip was highlighted by the courtesy of everyone on The Pan-American.*

The accommodations on both The Georgian and The South Wind were excellent, and your red-carpet treatment for the return trip was both unexpected and gratifying.



*You too can expect this kind of service!*  
LOUISVILLE AND NASHVILLE RAILROAD

# L&N

THE DIXIE LINE







# CINCINNATI and NEW ORLEANS CINCINNATI and MEMPHIS

SOUTHBOUND—Read down

| Piedmont Limited    | The Crescent        | The South Wind      | The Humming Bird | The Pan-American | Miles          |
|---------------------|---------------------|---------------------|------------------|------------------|----------------|
| 33 Daily<br>PM 8.30 | 37 Daily<br>PM 2.00 | 15 See Note 1<br>PM | 1 Daily<br>PM    | 5 Daily<br>AM    | 99 Daily<br>PM |
|                     |                     |                     |                  |                  | 0              |
|                     |                     |                     |                  |                  | 86             |
|                     |                     |                     |                  |                  | 439            |
|                     |                     |                     |                  |                  | 755            |
|                     |                     |                     |                  |                  | 11.45          |
|                     |                     |                     |                  |                  | 10.30          |
|                     |                     |                     |                  |                  | 1.12           |
|                     |                     |                     |                  |                  | 7.15           |
|                     |                     |                     |                  |                  | 9.00           |
|                     |                     |                     |                  |                  | 11.15          |
|                     |                     |                     |                  |                  | 2.45           |
|                     |                     |                     |                  |                  | 10.00          |
|                     |                     |                     |                  |                  | 12.10          |
|                     |                     |                     |                  |                  | 3.45           |
|                     |                     |                     |                  |                  | 4.10           |
|                     |                     |                     |                  |                  | 3.45           |
|                     |                     |                     |                  |                  | 2.45           |
|                     |                     |                     |                  |                  | 4.05           |
|                     |                     |                     |                  |                  | 12.57          |
|                     |                     |                     |                  |                  | 4.40           |
|                     |                     |                     |                  |                  | 11.24          |
|                     |                     |                     |                  |                  | 1.25           |
|                     |                     |                     |                  |                  | 12.01          |
|                     |                     |                     |                  |                  | 1.55           |
|                     |                     |                     |                  |                  | 7.10           |
|                     |                     |                     |                  |                  | 8.00           |
|                     |                     |                     |                  |                  | 4.55           |
|                     |                     |                     |                  |                  | 11.40          |
|                     |                     |                     |                  |                  | 1.15           |
|                     |                     |                     |                  |                  | 3.20           |
|                     |                     |                     |                  |                  | 10.30          |
|                     |                     |                     |                  |                  | 2.00           |
|                     |                     |                     |                  |                  | 3.40           |
|                     |                     |                     |                  |                  | 4.20           |
|                     |                     |                     |                  |                  | 5.59           |
|                     |                     |                     |                  |                  | 6.05           |
|                     |                     |                     |                  |                  | 7.55           |
|                     |                     |                     |                  |                  | 8.20           |
|                     |                     |                     |                  |                  | 6.04           |
|                     |                     |                     |                  |                  | 10.20          |
|                     |                     |                     |                  |                  | 8.50           |
|                     |                     |                     |                  |                  | 11.15          |
|                     |                     |                     |                  |                  | 6.04           |
|                     |                     |                     |                  |                  | 10.55          |
|                     |                     |                     |                  |                  | 1.50           |
|                     |                     |                     |                  |                  | 4.15           |
|                     |                     |                     |                  |                  | 11.05          |
|                     |                     |                     |                  |                  | 4.15           |
|                     |                     |                     |                  |                  | 12.15          |
|                     |                     |                     |                  |                  | 2.20           |
|                     |                     |                     |                  |                  | 7.22           |
|                     |                     |                     |                  |                  | 4.05           |
|                     |                     |                     |                  |                  | 7.82           |
|                     |                     |                     |                  |                  | 9.30           |
|                     |                     |                     |                  |                  | 11.20          |
|                     |                     |                     |                  |                  | 4.35           |
|                     |                     |                     |                  |                  | 12.30          |
|                     |                     |                     |                  |                  | 4.35           |
|                     |                     |                     |                  |                  | 7.82           |
|                     |                     |                     |                  |                  | 6.15           |
|                     |                     |                     |                  |                  | 1.46           |
|                     |                     |                     |                  |                  | 2.42           |
|                     |                     |                     |                  |                  | 6.38           |
|                     |                     |                     |                  |                  | 8.55           |
|                     |                     |                     |                  |                  | 7.14           |
|                     |                     |                     |                  |                  | 2.25           |
|                     |                     |                     |                  |                  | 7.14           |
|                     |                     |                     |                  |                  | 8.55           |
|                     |                     |                     |                  |                  | 9.27           |

**EQUIPMENT—THE HUMMING BIRD**

|                    |  |                                   |  |
|--------------------|--|-----------------------------------|--|
| <b>Sleepers</b>    | Cincinnati<br>Cincinnati<br>Cincinnati | New Orleans<br>Memphis<br>Atlanta | 6 Sections, 6 Roomettes, 4 Double Bedrooms<br>6 Sections, 4 Roomettes, 4 Double Bedrooms<br>6 Sections, 6 Roomettes, 4 Double Bedrooms |
| <b>Coaches</b>     | Cincinnati<br>Cincinnati               | New Orleans<br>Memphis            | Reclining Seats<br>Reclining Seats   |
| <b>Club-Lounge</b> | Cincinnati                             | Mobile                            |  |
| <b>Dining Car</b>  | Nashville                              | New Orleans                       |  |

**TRAINS 1 AND 4**

|                |            |            |                 |
|----------------|------------|------------|-----------------|
| <b>Coaches</b> | Cincinnati | Montgomery | Reclining Seats |
|----------------|------------|------------|-----------------|

## Table AA NEW ORLEANS-DETROIT

6 Section, 6 Roomette, 4 Double Bedroom Sleeper

| L.&N. 98-<br>B.&O. 58 | Daily          | B.&O. 57-<br>L.&N. 99 |
|-----------------------|----------------|-----------------------|
| PM                    |                | AM                    |
| 9.00                  | Lv New Orleans | 8.55                  |
| 8.15                  | Lv Birmingham  | 7.55                  |
| 12.50                 | Lv Nashville   | 3.20                  |
| 6.15                  | Lv Louisville  | 12.10                 |
| 9.30                  | Ar Cincinnati  | 9.00                  |
| 10.55                 | Lv Cincinnati  | 7.15                  |
| 5.35                  | Ar Toledo      | 12.30                 |
| 7.20                  | Ar Detroit     | 10.30                 |
| AM                    |                | PM                    |

**REFERENCE NOTES**  
 C.T. Central Standard Time. E.T. Eastern Standard Time.  
 NOTE 1: See page 6 for dates of operation.  
 ⊕ Cave City is Railroad Station for Mammoth Cave; taxi service from Cave City \$3.00 one way, \$5.50 round trip.  
 ○ Operates on trains 81 and 80 between Nashville and Atlanta. See Table 4a, page 13.

AIR-CONDITIONED CARS ARE REGULARLY ASSIGNED THE ABOVE TRAINS

NORTHBOUND—Read up

**Table A**  
See pages 8, 9, 13 for local schedules Cincinnati to New Orleans and Memphis

| The Pan-American | The Humming Bird | The South Wind | The Crescent           | Piedmont Limited |
|------------------|------------------|----------------|------------------------|------------------|
| 98 Daily<br>PM   | 6 Daily<br>PM    | 4 Daily<br>AM  | 16 See Note 1<br>Daily | 38 Daily<br>AM   |
|                  |                  |                |                        | 34 Daily<br>AM   |
|                  |                  |                |                        | 8.00             |
|                  |                  |                |                        | 6.25             |
|                  |                  |                |                        | 5.05             |
|                  |                  |                |                        | 3.30             |
|                  |                  |                |                        | 7.55             |
|                  |                  |                |                        | 11.23            |
|                  |                  |                |                        | 4.00             |
|                  |                  |                |                        | 7.20             |
|                  |                  |                |                        | 3.00             |
|                  |                  |                |                        | 1.30             |
|                  |                  |                |                        | 8.50             |
|                  |                  |                |                        | 9.30             |
|                  |                  |                |                        | 8.00             |
|                  |                  |                |                        | 12.10            |
|                  |                  |                |                        | 8.50             |
|                  |                  |                |                        | 5.00             |
|                  |                  |                |                        | 4.40             |
|                  |                  |                |                        | 7.36             |
|                  |                  |                |                        | 6.36             |
|                  |                  |                |                        | 5.14             |
|                  |                  |                |                        | 2.59             |
|                  |                  |                |                        | 2.30             |
|                  |                  |                |                        | 1.30             |
|                  |                  |                |                        | 4.40             |
|                  |                  |                |                        | 10.04            |
|                  |                  |                |                        | 2.10             |
|                  |                  |                |                        | 1.10             |
|                  |                  |                |                        | 6.45             |
|                  |                  |                |                        | 6.45             |
|                  |                  |                |                        | 2.18             |
|                  |                  |                |                        | 1.18             |
|                  |                  |                |                        | 4.15             |
|                  |                  |                |                        | 2.35             |
|                  |                  |                |                        | 8.42             |
|                  |                  |                |                        | 11.05            |
|                  |                  |                |                        | 2.10             |
|                  |                  |                |                        | 8.35             |
|                  |                  |                |                        | 8.40             |
|                  |                  |                |                        | 10.35            |
|                  |                  |                |                        | 6.18             |
|                  |                  |                |                        | 8.15             |
|                  |                  |                |                        | 6.50             |
|                  |                  |                |                        | 8.05             |
|                  |                  |                |                        | 4.32             |
|                  |                  |                |                        | 6.35             |
|                  |                  |                |                        | 7.40             |
|                  |                  |                |                        | 4.25             |
|                  |                  |                |                        | 4.40             |
|                  |                  |                |                        | 4.55             |
|                  |                  |                |                        | 2.35             |
|                  |                  |                |                        | 1.50             |
|                  |                  |                |                        | 4.15             |
|                  |                  |                |                        | 1.50             |
|                  |                  |                |                        | 1.40             |
|                  |                  |                |                        | 12.35            |
|                  |                  |                |                        | 1.40             |
|                  |                  |                |                        | 12.35            |
|                  |                  |                |                        | 1.40             |
|                  |                  |                |                        | 9.45             |
|                  |                  |                |                        | 8.30             |
|                  |                  |                |                        | 2.35             |
|                  |                  |                |                        | 10.50            |
|                  |                  |                |                        | 1.05             |
|                  |                  |                |                        | 9.25             |
|                  |                  |                |                        | 2.55             |
|                  |                  |                |                        | 1.40             |
|                  |                  |                |                        | 12.25            |
|                  |                  |                |                        | 1.40             |
|                  |                  |                |                        | 12.20            |
|                  |                  |                |                        | 11.03            |
|                  |                  |                |                        | 10.51            |
|                  |                  |                |                        | 10.47            |
|                  |                  |                |                        | 10.25            |
|                  |                  |                |                        | 9.15             |
|                  |                  |                |                        | 9.00             |
|                  |                  |                |                        | 12.40            |
|                  |                  |                |                        | 9.10             |
|                  |                  |                |                        | 11.15            |
|                  |                  |                |                        | 7.53             |
|                  |                  |                |                        | 10.51            |
|                  |                  |                |                        | 7.36             |
|                  |                  |                |                        | 10.25            |
|                  |                  |                |                        | 7.12             |
|                  |                  |                |                        | 9.00             |
|                  |                  |                |                        | 5.50             |
|                  |                  |                |                        | 2.00             |
|                  |                  |                |                        | 11.15            |

**EQUIPMENT—THE PAN AMERICAN**

|                     |  |  |   |
|---------------------|--|--|---|
| <b>Sleepers</b>     | Detroit<br>New York<br>Cincinnati<br>Cincinnati<br>Mobile<br>Bowling Green | New Orleans<br>Nashville<br>New Orleans<br>Memphis<br>Montgomery<br>New Orleans<br>Memphis | 6 Sections, 6 Roomettes, 4 Double Bedrooms<br>10 Roomettes, 6 Double Bedrooms<br>Reclining Seats<br>Reclining Seats<br>(Rolling Buffet: Sandwiches, coffee, donuts) |
| <b>Coaches</b>      |  |  |   |
| <b>Diner-Lounge</b> |  |  |   |
| <b>Dining Car</b>   |  |  |   |

**TRAINS 15-16—THE SOUTH WIND  
BETWEEN CHICAGO AND MIAMI**  
See page 6 for complete schedules, equipment and dates of operation

□ Tickets may be exchanged at Railroad Ticket Office for tickets to be honored on Greyhound Buses between Railroad Stations.  
 ⊕ Tickets may be exchanged at Railroad Ticket Office for tickets to be honored on Greyhound Buses between Bus Stations.  
 A Stops to leave pay passengers from New Orleans, and to take pay passengers for Mobile or beyond.  
 B Tickets may be exchanged at Railroad Ticket Office for tickets to be honored from Railroad Station, Flomaton, to Bus Station, Pensacola.  
 C Stops to receive or discharge revenue passengers to or from Chicago, Ill., or to or from points beyond Montgomery, Ala.  
 f Stops on signal.  
 J Stops to leave or take pay passengers.  
 K Stops to leave or take pay passengers from or to Mobile or beyond, and to take or leave pay passengers to or from New Orleans or beyond.  
 M Stops to take or leave pay passengers from or to Louisville or beyond, and to or from points beyond Bowling Green.  
 P Stops to leave pay passengers from Mobile and beyond and to take pay passengers for New Orleans.

# CHICAGO—ST. LOUIS—NEW ORLEANS, VIA EVANSVILLE AND NASHVILLE

SOUTHBOUND—Read down

**Table B**

| The Humming Bird | Miles | The Humming Bird |
|------------------|-------|------------------|
| 93-5 Daily<br>PM |       | 6-54 Daily<br>AM |
| 3.45             | 0     | 9.45             |
| 6.05             | 123   | 7.05             |
| 7.06             | 178   | 5.50             |
| 8.03             | 235   | 4.50             |
| 9.25             | 287   | 3.40             |
| 4.50             | 0     | 7.45             |
| 9.00             | 165   | 3.45             |
| 10.20            | 287   | 3.00             |
| G 11.15          | 339   | J 1.39           |
| G 11.57          | 374   | J 12.56          |
| 1.40             | 446   | K 11.30          |
| 2.00             | 446   | 11.05            |
| 4.20             | 556   | 8.40             |
| 6.05             | 651   | 6.50             |
| 6.20             | 651   | 6.35             |
| 8.30             | 749   | 4.40             |
| 8.50             | 749   | 4.15             |
| 10.55            | 867   | 1.50             |
| Δ 12.15          |       | 12.25            |
| 10.55            | 867   | 1.50             |
| 12.15            | 927   | 12.35            |
| 9.30             |       | 2.55             |
| 11.20            |       | 12.50            |
| 12.30            | 927   | 12.20            |
| E 1.16           | 967   | E 11.30          |
| 1.46             | 987   | E 11.03          |
| C 2.02           | 1000  | E 10.47          |
| E 2.25           | 1015  | E 10.29          |
| 3.55             | 1072  | 9.15             |
| PM               | AM    | AM               |

# CHICAGO—ST. LOUIS—ATLANTA CHICAGO—ATLANTA—FLORIDA

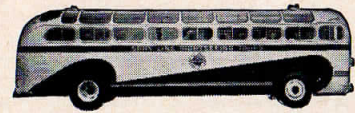
VIA EVANSVILLE AND NASHVILLE

**Table C**

| The Georgian         | Dixie Flyer    | Miles | Dixie Flyer    | The Georgian      |
|----------------------|----------------|-------|----------------|-------------------|
| 93-53-81 Daily<br>PM | 95 Daily<br>PM |       | 94 Daily<br>AM | 80-54 Daily<br>AM |
| 3.45                 | A 10.45        | 0     | 4.25           | 9.45              |
| 6.05                 | 1.15           | 123   | 1.42           | 7.05              |
| 7.06                 | 2.30           | 178   | 11.55          | 5.50              |
| 8.03                 | 3.45           | 235   | 10.15          | 4.50              |
| 9.25                 | 5.10           | 287   | 8.35           | 3.40              |
| 4.50                 |                | 0     | 7.45           | 7.45              |
| 9.00                 |                | 165   | B 3.45         | B 3.45            |
| 9.55                 | 5.55           | 287   | 7.50           | 3.00              |
| D 10.47              | 7.05           | 339   | 6.25           | J 1.39            |
| D 11.30              | 8.06           | 374   | 5.30           | J 12.56           |
| 1.10                 | 10.10          | 446   | 3.50           | K 11.30           |
| 1.40                 | 10.50          | 446   | 3.05           | 10.53             |
| 5.50                 | 3.55           | 598   | 12.10          | 8.50              |
| 8.55                 | 7.30           | 731   | 8.35           | 5.45              |
| AM                   | 9.30           | 731   | V 6.30         | PM                |
|                      | V 6.30         | 1086  | 9.30           |                   |
|                      | 8.25           | 1086  | 7.15           |                   |
|                      | 8.59           | 1123  | 6.32           |                   |
|                      | 9.57           | 1196  | 5.34           |                   |
|                      | 1.53           | 1385  | 1.40           |                   |
|                      | 3.02           | 1427  | 12.30          |                   |
|                      | 3.17           | 1434  | 12.07          |                   |
|                      | 3.55           | 1452  | 11.30          |                   |
|                      | 10.25          | 0     | 5.30           |                   |
|                      | 4.30           | 256   | 11.03          |                   |
|                      | 5.15           | 274   | 10.30          |                   |
|                      | 10.30          | 0     | 5.35           |                   |
|                      | 12.22          | 107   | 3.00           |                   |
|                      | 12.45          | 124   | 2.35           |                   |
|                      | 1.30           | 147   | 1.50           |                   |
|                      | 8.10           | 310   | 8.00           |                   |
|                      | 9.05           | 357   |                |                   |
|                      | 3.00           | 207   | 12.38          |                   |
|                      | 3.50           | 238   | 12.01          |                   |
|                      | 5.35           | 291   | 10.05          |                   |
|                      | PM             |       | AM             |                   |

AIR-CONDITIONED CARS ARE REGULARLY ASSIGNED THE ABOVE TRAINS

**SEE AMERICA**  
 "FRONT ROW CENTER"  
 There's no surer way to make your vacation or business trip a complete and memorable success than to see the glorious sights of famous cities and resort areas the popular Gray Line way.



Ask your Louisville & Nashville Railroad Ticket or Passenger Agent for information and free folder.

**EQUIPMENT—THE HUMMING BIRD**

|                 |  |                             |
|-----------------|--|-----------------------------|
| <b>Sleepers</b> | Chicago-Mobile<br>Chicago-Montgomery<br>St. Louis-Montgomery | 6 Sec., 6 Rmte., 4 DBR.<br> |
|-----------------|--|-----------------------------|



# CHICAGO, LOUISVILLE and FLORIDA THE SOUTH WIND VIA MONTGOMERY

CONNECTING SERVICE FROM CINCINNATI  
VIA LOUISVILLE TO FLORIDA

SOUTHBOUND—Read down NORTHBOUND—Read up

| The South Wind                                    |       | Table D            |                | The South Wind |    |
|---|-------|--------------------|----------------|----------------|----|
| 15 Note 1   | Miles |                    |                | 16 Note 1      |    |
| AM 8.40   | 0     | Lv Chicago         | CT Penna. R.R. | PM 6.45        | Ar |
| 1.40  | 202   | Lv Indianapolis    | ET "           | 3.45           | Ar |
| 4.00  | 313   | Ar Louisville      | ET "           | 1.20           | Lv |
| 9.00  | 0     | Lv Cincinnati      | ET L.&N. R.R.  | 9.30           | Ar |
| 12.11   | 114   | Ar Louisville      | ET "           | 6.15           | Lv |
| 4.10  | 0     | Lv Louisville      | ET L.&N. R.R.  | 1.10           | Ar |
| E 5.05  | 114   | Lv Bowling Green   | CT "           | E 10.04        | Ar |
| 6.25  | 187   | Ar Nashville       | CT "           | 8.42           | Lv |
| 6.32  | 187   | Lv Nashville       | CT "           | Ar 8.35        | Ar |
| E 8.40  | 307   | Lv Decatur         | CT "           | E 6.18         | Ar |
| 10.25   | 392   | Ar Birmingham      | CT "           | Lv 4.32        | Ar |
| 10.32   | 392   | Lv Birmingham      | CT "           | Ar 4.25        | Ar |
| 12.30   | 490   | Ar Montgomery      | CT "           | Lv 2.35        | Ar |
| 12.35   | 490   | Lv Montgomery      | CT A.C.L. R.R. | Ar 2.30        | Ar |
| V 5.55  | 700   | Ar Thomasville     | ET "           | V 11.09        | Ar |
| 7.55  | 805   | Ar Waycross        | ET "           | V 9.00         | Ar |
| 9.25  | 880   | Ar Jacksonville    | ET "           | 7.40           | Lv |
| <b>EAST FLORIDA POINTS VIA JACKSONVILLE, FLA.</b> |       |                    |                |                |    |
| 9.55  | 0     | Lv Jacksonville    | ET F.E.C. Ry.  | 7.15           | Ar |
| 10.31   | 37    | Ar St. Augustine   | ET "           | 6.32           | Lv |
| 11.25   | 110   | Ar Daytona Beach   | ET "           | 5.34           | Lv |
| 3.23  | 299   | Ar West Palm Beach | ET "           | 1.40           | Lv |
| 4.44  | 341   | Ar Fort Lauderdale | ET "           | 12.30          | Lv |
| 5.00  | 348   | Ar Hollywood       | ET "           | 12.07          | Lv |
| 5.40  | 366   | Ar Miami           | ET "           | 11.30          | Lv |
| <b>WEST FLORIDA POINTS VIA JACKSONVILLE, FLA.</b> |       |                    |                |                |    |
| 10.30   | 0     | Lv Jacksonville    | ET A.C.L. R.R. | 5.35           | Ar |
| 1.30  | 147   | Ar Orlando         | ET "           | 1.50           | Lv |
| 8.10  | 310   | Ar Fort Myers      | ET "           | 8.00           | Lv |
| 9.05  | 357   | Ar Naples          | ET "           | 12.38          | Lv |
| 3.00  | 207   | Ar Lakeland        | ET "           | 12.01          | Lv |
| 3.50  | 238   | Ar Tampa           | ET "           | 10.05          | Lv |
| 5.35  | 291   | Ar Sarasota        | ET "           | 5.30           | Lv |
| 10.25   | 0     | Lv Jacksonville    | ET "           | 11.03          | Ar |
| 4.30  | 256   | Ar Clearwater      | ET "           | 10.30          | Ar |
| 5.15  | 274   | Ar St. Petersburg  | ET "           | AM             |    |

### REFERENCE NOTES:

**NOTE 1**—Operates every other day; see column on right for dates.

E Stops to receive or discharge revenue passengers to or from Indianapolis, Ind. or to or from points beyond Montgomery, Ala.

V Oklahoma Ave.

□ Connecting train.

● Via Tamiami Trail Tours bus (connection made at Sarasota). Railroad tickets honored.

● Via Tamiami Trail Tours bus (connection made at Lakeland). Railroad tickets honored.

## FABULOUS FLORIDA

Why not plan now for a wonderful vacation in Florida this summer? Ask our representative about package tours to Florida Resorts. Don't miss this opportunity to swim in a palm-shaded pool, lounge on a famous beach, or romp in the

invigorating surf, and at a surprisingly low cost! And remember, much of the fun in a vacation is the travel connected with it. Our experienced travel representatives will be happy to arrange your trip for you.

AIR-CONDITIONED CARS ARE REGULARLY ASSIGNED THE ABOVE TRAINS

# NEW YORK and NEW ORLEANS VIA WASHINGTON AND ATLANTA

Read down SOUTHBOUND—DAILY Local Schedules Montgomery to New Orleans on page 9

| Piedmont Limited |         | The Crescent | Miles                   | Table E        |                  | NORTHBOUND—DAILY Local Schedules New Orleans to Montgomery on page 9 |          |
|------------------|---------|--------------|-------------------------|----------------|------------------|--|----------|
| 33               | 37      |              |                         | The Crescent   | Piedmont Limited |  |          |
| PM 8.30          | PM 2.00 | 0            | Lv New York             | ET Penna. R.R. | Ar               | AM 8.00  | AM 11.20 |
| 8.44             | 2.15    | 10           | Lv Newark               | ET "           | Ar               | 7.44   | 11.04    |
| 10.07            | 3.26    | 86           | Lv Philadelphia         | ET "           | Ar               | 6.25   | 9.52     |
| 10.27            | 3.35    | 86           | Lv Philadel. (30th St.) | ET "           | Ar               | 6.12   | 9.43     |
| 12.07            | 5.05    | 187          | Lv Baltimore            | ET "           | Ar               | 4.32   | 8.10     |
| 1.05             | 5.45    | 227          | Ar Washington           | ET "           | Lv               | 3.50   | 7.30     |
| 2.45             | 6.10    | 604          | Lv Washington           | ET Sou. Ry.    | Ar               | M3.10  | 6.40     |
| 12.15            | E 2.30  | 604          | Lv Charlotte            | ET "           | Ar               | E 6.03   | 7.45     |
| 11.20            | .....   | 0            | Lv Asheville            | ET "           | Ar               | .....  | 5.00     |
| 1.55             | .....   | 69           | Ar Spartanburg          | ET "           | Lv               | .....  | 2.15     |
| 2.07             | 3.58    | 679          | Lv Spartanburg          | ET "           | Ar               | 4.28   | 5.50     |
| 6.30             | E 8.00  | 864          | Ar Atlanta              | ET "           | Lv               | E 12.35  | 1.30     |
| 7.30             | 8.25    | 864          | Lv Atlanta              | ET W.P. Rte.   | Ar               | 12.05  | 7.30     |
| 9.10             | 10.10   | 973          | Lv Opelika              | CT "           | Ar               | 8.10   | 3.45     |
| 10.40            | 11.40   | 1039         | Ar Montgomery           | CT "           | Lv               | 6.45   | 2.20     |
| 11.15            | 12.05   | 1039         | Lv Montgomery           | CT L.&N. R.R.  | Ar               | 5.30   | 2.00     |
| 1.50             | 2.15    | 1157         | Ar Flomaton             | CT "           | Lv               | 2.55   | 11.15    |
| 4.15             | B 4.45  | 0            | Lv Flomaton             | CT "           | Ar               | 1.40   | 9.45     |
| 5.35             | B 6.00  | 44           | Ar Pensacola            | CT "           | Lv               | 12.35  | 8.30     |
| 2.20             | 2.15    | 1157         | Lv Flomaton             | CT "           | Ar               | 2.35   | 10.50    |
| 4.05             | 3.40    | 1217         | Ar Mobile               | CT "           | Lv               | 1.05   | 9.25     |
| .....            | 1.40    | .....        | Lv Pensacola            | CT "           | Ar               | .....  | .....    |
| .....            | 3.35    | .....        | Ar Mobile               | CT "           | Lv               | .....  | .....    |
| 4.35             | 4.00    | 1217         | Lv Mobile               | CT "           | Ar               | 12.40  | 9.10     |
| 5.31             | H 4.48  | 1257         | Ar Pascagoula           | CT "           | Lv               | f 11.48  | f 8.22   |
| 6.15             | 5.17    | 1277         | Ar Biloxi               | CT "           | Lv               | 11.15  | 7.53     |
| 6.38             | H 5.34  | 1290         | Ar Gulfport             | CT "           | Lv               | 10.51  | L 7.36   |
| K 6.58           | .....   | 1299         | Ar Pass Christian       | CT "           | Lv               | J 10.35  | G 7.22   |
| 7.14             | 6.00    | 1305         | Ar Bay St. Louis        | CT "           | Lv               | 10.25  | 7.12     |
| 8.55             | 7.35    | 1362         | Ar New Orleans          | CT "           | Lv               | 9.00   | 5.50     |
| AM               | PM      |              |                         |                |                  | PM   | PM       |

### REFERENCE NOTES

C.T. Central Time. E.T. Eastern Time.

□ Tickets may be exchanged at Railroad Ticket Office for tickets to be honored on Greyhound Buses between Bus Stations.

B Tickets may be exchanged at Railroad Ticket Office for tickets to be honored from Railroad Station, Flomaton, to Bus Station, Pensacola.

E No coaches between Charlotte-Atlanta (Sou. 37-38).

f Stops on signal.

G Stops to leave or take pay passengers from or to Montgomery, Pensacola or beyond.

H Stops to leave pay passengers from Mobile and beyond and to take pay passengers for New Orleans.

J Stops to leave pay passengers from New Orleans and beyond and take pay passengers for Mobile and beyond.

K Stops to leave pay passengers from Montgomery, Pensacola or beyond; also on Sunday at Pass Christian to take pay passengers for New Orleans.

L Stops to leave or take pay passengers from or to New Orleans, Mobile, Pensacola, or beyond.

M Sleeper may be occupied until 7.00 AM EST.

## NEW ORLEANS and JACKSONVILLE THE GULF WIND

Read down SOUTHBOUND—DAILY Local Schedules New Orleans to Jacksonville on page 9

| The Gulf Wind |             | Miles       | Table F |                     | The Gulf Wind  |           |       |
|---------------|-------------|-------------|---------|---------------------|----------------|-----------|-------|
| 6 Daily       | 98-63 Daily | 34-61 Daily |         | 60-33 Daily         | 62 Daily       | 37 Daily  |       |
| AM 9.15       | PM 9.00     | PM 5.50     | 0       | Lv New Orleans      | CT L.&N. R.R.  | Ar 8.55   | 8.55  |
| 12.35         | 1.05        | 9.25        | 145     | Lv Mobile           | CT "           | Ar 4.05   | 4.05  |
| 1.50          | 2.35        | 10.50       | 204     | Ar Flomaton         | CT "           | Lv 2.20   | 2.20  |
| B 4.45        | 4.15        | 11.05       | 204     | Lv Flomaton         | CT "           | Ar 1.40   | 9.45  |
| B 6.00        | A 5.35      | 12.03       | 248     | Ar Pensacola        | CT "           | Lv 12.35  | 8.30  |
| .....         | A 6.30      | 12.15       | 248     | Lv Pensacola        | CT "           | Ar 12.15  | 7.45  |
| .....         | 8.05        | 1.26        | 298     | Ar Crestview        | CT "           | Lv 11.02  | 5.57  |
| .....         | 8.45        | 2.00        | 327     | Ar DeFuniak Springs | CT "           | Lv 10.25  | 5.08  |
| .....         | 9.46        | .....       | 355     | Ar Chipley          | CT "           | Lv 4.06   | ..... |
| .....         | 10.06       | .....       | 374     | Ar Cottondale       | CT "           | Lv 3.49   | ..... |
| .....         | 10.21       | 3.08        | 383     | Ar Marianna         | CT "           | Lv 9.18   | 3.35  |
| .....         | 12.20       | 4.50        | 409     | Ar Chattahoochee    | ET "           | Lv 9.45   | 3.50  |
| .....         | 12.20       | 4.50        | 409     | Lv Chattahoochee    | ET S.A.L. R.R. | Ar 9.35   | 3.50  |
| .....         | 12.48       | 5.11        | 428     | Ar Quincy           | ET "           | Lv 9.07   | 2.58  |
| .....         | 1.30        | 5.50        | 452     | Ar Tallahassee      | ET "           | Lv 8.30   | 2.15  |
| .....         | 2.45        | G 6.48      | 507     | Ar Madison          | ET "           | Lv E 7.10 | 12.25 |
| .....         | 3.20        | 7.18        | 534     | Ar Live Oak         | ET "           | Lv 6.34   | 11.33 |
| .....         | 3.43        | 7.42        | 558     | Ar Lake City        | ET "           | Lv 6.11   | 11.09 |
| .....         | 4.50        | .....       | 598     | Ar Baldwin          | ET "           | Lv 6.11   | 11.09 |
| .....         | 5.30        | 9.00        | 617     | Ar Jacksonville     | ET "           | Lv 5.00   | 9.45  |
| .....         | PM          | AM          |         |                     |                | PM        | AM    |

### EQUIPMENT—TABLE F

THE GULF WIND

|                    | New Orleans | Jacksonville |  |
|--------------------|-------------|--------------|--|
| Observation Lounge | New Orleans | Jacksonville | 5 Double Bedrooms                          |
| Sleepers           | New Orleans | Jacksonville | 6 Sections, 6 Roomettes, 4 Double Bedrooms |
| Dining Cars        | New Orleans | Mobile       | Tallahassee Jacksonville                   |
| Coaches            | New Orleans | Jacksonville | Reclining Seats                            |

### TRAINS 62-63

|         | Jacksonville | Flomaton |                 |
|---------|--------------|----------|-----------------|
| Coaches | Jacksonville | Flomaton | Reclining Seats |

### REFERENCE NOTES

A Stops 30 minutes for breakfast.

B Tickets may be exchanged at Railroad Ticket Office for tickets to be honored from Railroad Station, Flomaton, to Bus Station, Pensacola.

E Stops to take passengers for Tallahassee or beyond, and leave from Jacksonville or beyond.

G Stops to leave passengers from Tallahassee or beyond, and take for Jacksonville or beyond.

C.T. Central Time. E.T. Eastern Time.

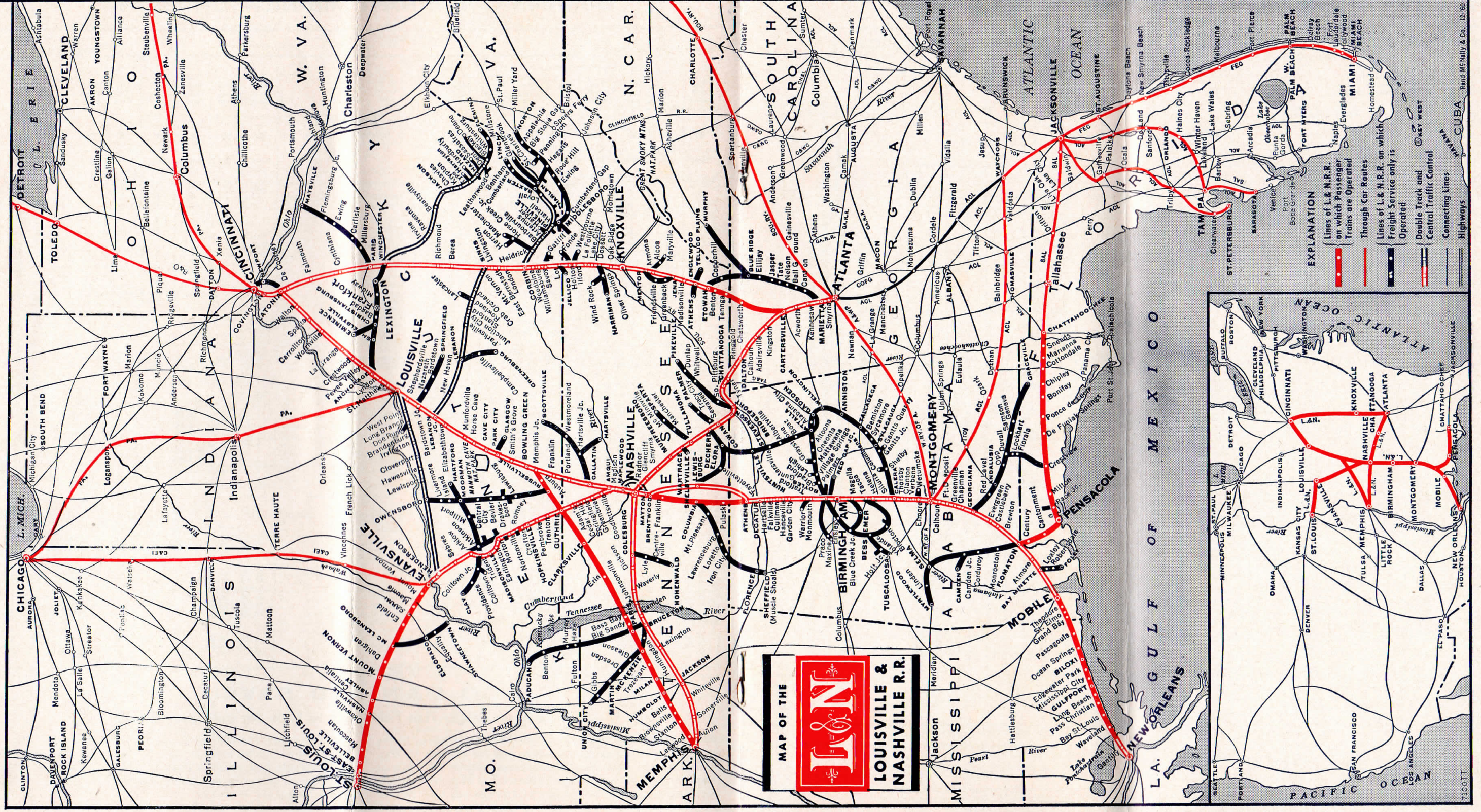
□ Tickets may be exchanged at Railroad Ticket Office for tickets to be honored on Greyhound Buses between Railroad Stations.

AIR-CONDITIONED CARS ARE REGULARLY ASSIGNED THE ABOVE TRAINS







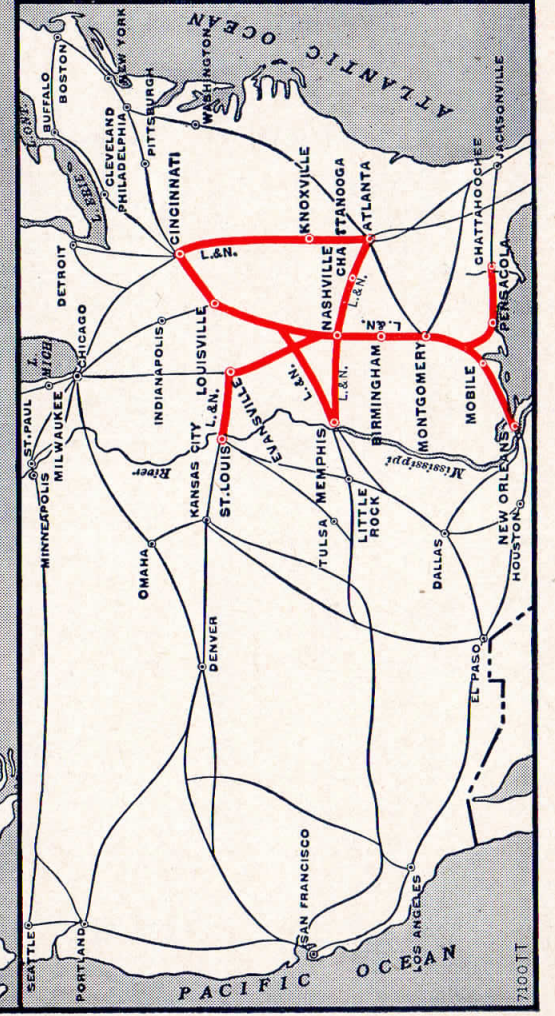


MAP OF THE

# L & N

LOUISVILLE & NASHVILLE R.R.

- EXPLANATION**
- Lines of L. & N. R.R. on which Passenger Trains are Operated
  - Through Car Routes
  - Lines of L. & N. R.R. on which Freight Service only is Operated
  - Double Track and Central Traffic Control
  - Connecting lines
  - Highways





SOUTHBOUND—Read down

NORTHBOUND—Read up

Table 2: Train schedule between St. Louis and Atlanta. Columns include train names (Dixie Flyer, The Humming Bird, The Georgian), departure times, and arrival times at various stations.

REFERENCE NOTES

- ▲ No facilities for handling baggage at this station; baggage should be checked to or from nearest station where facilities are available.
B Stops to leave or take pay passengers.
f Stops on signal.
G Stops to take or leave pay passengers from or to Chattanooga or Nashville, or beyond.
H Stops to take or leave pay passengers from or to Nashville and beyond.
N Stops to leave pay passengers from points south of Evansville and passengers occupying sleeping cars from Evansville and beyond and to take pay passengers for East St. Louis and beyond.
Q Stops to leave pay passengers from Henderson or beyond or take for Nashville or beyond.
R Stops to take or leave pay passengers to or from points beyond Evansville, also to take or leave Pullman passengers to or from Louisville and beyond.
T Stops to leave or take pay passengers from or to Evansville, St. Louis or beyond; No. 93 also at Maunie on Sundays to take or leave passengers.
W Stops to leave pay passengers from Chicago, St. Louis or beyond, and to take for Chattanooga or beyond.
Y Stops to leave revenue passengers from Nashville and beyond and to take revenue passengers for Chicago, St. Louis and beyond.

AIR-CONDITIONED CARS ARE REGULARLY ASSIGNED THE ABOVE TRAINS

HELP WHEN YOU TRAVEL OR SHIP!
On pages 18 and 19 are listed the names, addresses and telephone numbers of Passenger and Freight Traffic Representatives in the larger cities. When information regarding your travel or shipping problem is desired, a call to any of these representatives will receive courteous and prompt attention.

CINCINNATI-MEMPHIS

SOUTHBOUND—Read down

NORTHBOUND—Read up

Table 3: Train schedule between Cincinnati and Memphis. Columns include train names (The Humming Bird, The Pan-American), departure times, and arrival times at various stations.

EQUIPMENT

TRAINS 5-101 and 104-6: Sleeper (Cincinnati, Memphis), Coaches (Cincinnati, Memphis), Meal Service (Bowling Green, Memphis).
TRAINS 99-103 and 102-98: Coaches (Cincinnati, Memphis), Meal Service (Bowling Green, Memphis).

BUDGET SLEEPER SERVICE

Cincinnati-Louisville-Memphis: 6 Section, 4 Roomette, 4 Double Bedroom Sleeper. Coach Tickets honored in Pullman Car upon payment of charges for accommodations occupied.

REFERENCE NOTES—Table 3

- A Stops to take pay passengers.
B Stops to leave or take pay passengers.
D Stops to leave pay passengers.
E No. 101—to leave pay passengers from Paris and stops north thereof, and to take pay passengers for or via Milan, Humboldt, Brownsville and Memphis.
f Stops on Signal.
M Stops to leave or take pay passengers from or to points beyond Bowling Green, or Louisville and beyond.
● Cave City is station for Mammoth Cave; reached by taxi service, fare \$3.00 one way; \$5.50 round trip.
① North of Bowling Green, checked baggage moves in No. 4, arriving Louisville 7:25 AM, Cincinnati 12:10 PM.
▲ No facilities for handling baggage at this station; baggage should be checked to or from nearest station where facilities are available.

AIR-CONDITIONED CARS ARE REGULARLY ASSIGNED THE ABOVE TRAINS

CINCINNATI and ATLANTA

and connections to Florida

SOUTHBOUND—Read down

NORTHBOUND—Read up

Table 4: Train schedule between Cincinnati and Atlanta. Columns include train names (The Flamingo), departure times, and arrival times at various stations.

For through Sleeping Car Service between Cincinnati and Atlanta, see Table 4a, below.

EQUIPMENT

TRAINS 17-18—THE FLAMINGO: Coaches (Cincinnati, Atlanta, Albany, Jacksonville), Reclining Seats.

REFERENCE NOTES—Table 4

- C Stops to leave or take pay passengers from or to Covington and beyond.
E Stops to leave or take pay passengers from or to Cincinnati or beyond.
f Stops on signal.
G Stops to leave pay passengers from Atlanta and beyond and to take for Cincinnati and beyond.
H Stops to leave or take pay passengers from or to Knoxville or beyond.

THROUGH SLEEPING CAR SERVICE CINCINNATI-CHATTANOOGA-ATLANTA

6 Section, 6 Roomette, 4 Double Bedroom Sleeper.

Table 4a: Through sleeping car schedule between Cincinnati, Chattanooga, and Atlanta. Columns include train names, departure times, and arrival times.



### NASHVILLE and MEMPHIS

Read down Read up

| 107 Daily         |       | Miles | Table 5                     |       | 108 Daily |
|-------------------|-------|-------|-----------------------------|-------|-----------|
| Central Time      |       |       |                             |       |           |
| .....             | 11.20 | 0     | Lv Nashville, Tenn. .... Ar | 6.30  | .....     |
| f                 | 11.51 | 20    | Lv Pegram▲.....Lv           | 5.42  | f         |
| .....             | 12.06 | 25    | Lv Kingston Springs▲.....Lv | 5.35  | .....     |
| f                 | 12.14 | 31    | Lv White Bluff▲.....Lv      | 5.25  | f         |
| .....             | 12.27 | 37    | Lv Burns▲.....Lv            | 5.13  | .....     |
| f                 | 12.50 | 42    | Lv Dickson.....Lv           | 5.05  | f         |
| .....             | 12.56 | 57    | Lv McEwen▲.....Lv           | 4.32  | .....     |
| f                 | 1.10  | 62    | Lv Gorman▲.....Lv           | 4.24  | f         |
| .....             | 1.28  | 67    | Lv Waverly.....Lv           | 4.17  | .....     |
| f                 | ..... | 80    | Lv Johnsonville.....Lv      | 3.52  | f         |
| Tennessee River   |       |       |                             |       |           |
| .....             | 1.38  | 87    | Lv Camden.....Lv            | 3.42  | .....     |
| f                 | 2.00  | 95    | Ar Bruceton.....Ar          | 3.25  | f         |
| .....             | 2.15  | 95    | Lv Bruceton.....Lv          | 3.05  | .....     |
| f                 | ..... | 97    | Lv Hollow Rock▲.....Lv      | ..... | f         |
| .....             | 2.26  | 101   | Lv Buena Vista.....Lv       | 2.48  | .....     |
| f                 | 2.52  | 116   | Lv Wildersville▲.....Lv     | 2.18  | f         |
| .....             | 3.15  | 126   | Lv Lexington.....Lv         | 2.00  | .....     |
| f                 | 4.00  | 152   | Lv Jackson.....Lv           | 1.10  | f         |
| .....             | 4.28  | 168   | Lv Mercer▲.....Lv           | 12.30 | .....     |
| Big Hatchie River |       |       |                             |       |           |
| .....             | 4.47  | 181   | Lv Whiteville.....Lv        | 12.10 | .....     |
| f                 | 5.07  | 194   | Lv Somerville.....Lv        | 11.52 | f         |
| .....             | 5.26  | 204   | Lv Oakland▲.....Lv          | 11.32 | .....     |
| f                 | 5.42  | 212   | Lv Eads▲.....Lv             | 11.16 | f         |
| .....             | 6.45  | 237   | Ar Memphis, Tenn. .... Ar   | 10.30 | .....     |
| AM                | ..... | ..... | Mississippi River           | PM    | .....     |

### Use The RAIL-AUTO TRAVEL PLAN (Hertz Driv-Ur-Self System)

On your next trip enjoy the restfulness and safety of train travel to your destination, then pick up a new Hertz car at train-side when you arrive. What a travel combination! The rail-auto travel plan enables you to do more, see more, in less time and at nominal cost.

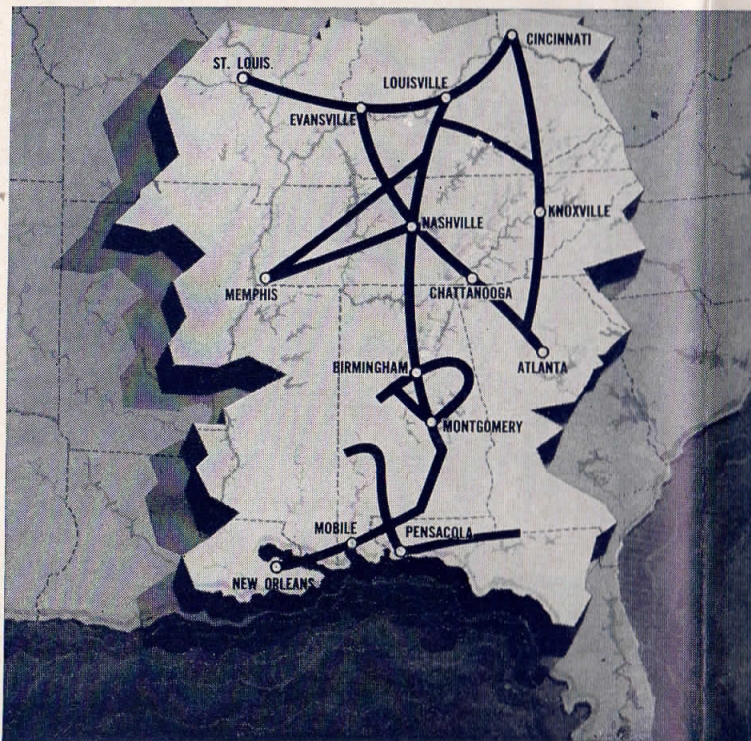
L. & N. ticket agents will be glad to make all arrangements.

f Stops on signal.  
▲ No facilities for handling baggage at this station; baggage should be checked to or from nearest station where facilities are available.

#### TRAINS 107-108

Coaches Nashville Memphis Reclining Seats

### STANDOUT GROWTH AREA Served by an Outstanding Railroad



This productive central region sets the pace for southern industrial growth. Those states linked by L & N rails average 11% more manufacturing plants than the South as a whole.

Here is proof that industry finds in the Mid-south the same favorable conditions YOU are looking for — among them, suitable land fairly priced; productive labor; ample fuel, electricity, water; plus a mild climate, pleasant surroundings, and a cooperative political environment.

L & N—one of the nation's great railroads—serves as the Mid-south's artery for both raw materials and finished products. Completely modern, with push-button classification yards, centralized traffic control, and a large fleet of cars to meet every need, L & N grids the Central South with 5,700 miles of up-to-date transportation system—carries 74,000,000 tons of freight yearly. L & N offers you direct, fast service to distribution centers the country over . . . access to world markets through direct connections to major Gulf ports.

Come to the Central South, where today's continued industrial growth assures still greater business opportunities! L & N will be glad to recommend plant locations that would be tailored to your specific needs. Phone or write:

A. James, Jr., Director of Industrial Development, Louisville and Nashville Railroad, Louisville 1, Kentucky (JUniper 7-1121, Ext. 318).



### LOUISVILLE AND NASHVILLE RAILROAD

### FLOMATON and JACKSONVILLE

Read down Read up

| 5 Daily                  |          | 99 Daily | Miles    | Table 7                             |       | 98 Daily | 6 Daily  |
|--------------------------|----------|----------|----------|-------------------------------------|-------|----------|----------|
| For Equipment see page 7 |          |          |          |                                     |       |          |          |
| PM                       | 7.05     | AM       | 9.00     | L. & N. R. R.                       | PM    | 9.30     | AM       |
| .....                    | 10.20    | .....    | 12.25    | Lv Cincinnati, Ohio.....ET.....Ar   | ..... | 5.55     | .....    |
| PM                       | 3.45     | PM       | 10.45    | Lv Louisville, Ky.....ET.....Ar     | AM    | 4.25     | AM       |
| .....                    | .....    | .....    | .....    | C. & E. I. R. R.                    | ..... | .....    | .....    |
| PM                       | 4.50     | .....    | .....    | Lv Chicago, Ill.....CT.....Ar       | AM    | 7.45     | AM       |
| .....                    | .....    | .....    | .....    | L. & N. R. R.                       | ..... | .....    | .....    |
| PM                       | 10.20    | AM       | 5.55     | Lv St. Louis, Mo.....CT.....Ar      | PM    | 7.50     | AM       |
| .....                    | .....    | .....    | .....    | L. & N. R. R.                       | ..... | .....    | .....    |
| AM                       | 2.00     | PM       | 3.40     | Lv Evansville, Ind.....CT.....Ar    | PM    | 12.30    | PM       |
| .....                    | 6.20     | .....    | 8.20     | Lv Nashville, Tenn.....CT.....Ar    | ..... | 11.05    | .....    |
| .....                    | 8.50     | .....    | 11.15    | Lv Birmingham, Ala.....CT.....Ar    | ..... | 6.35     | .....    |
| .....                    | 10.55    | .....    | 1.50     | Lv Montgomery, Ala.....CT.....Ar    | ..... | 4.15     | .....    |
| .....                    | .....    | .....    | .....    | Ar Flomaton, Ala.....CT.....Lv      | ..... | 1.50     | .....    |
| .....                    | .....    | 98 Daily | 34 Daily | L. & N. R. R.                       | ..... | 33 Daily | 37 Daily |
| .....                    | .....    | PM       | 9.00     | Lv New Orleans, La.....CT.....Ar    | AM    | 8.55     | PM       |
| .....                    | .....    | .....    | 1.05     | Lv Mobile, Ala.....CT.....Ar        | ..... | 4.05     | .....    |
| .....                    | .....    | .....    | 2.35     | Ar Flomaton, Ala.....CT.....Lv      | ..... | 2.20     | .....    |
| .....                    | .....    | .....    | .....    | .....                               | ..... | .....    | .....    |
| Bus Daily                | 63 Daily | 61 Daily | .....    | L. & N. R. R.                       | AM    | 60 Daily | 62 Daily |
| .....                    | 11.05    | .....    | 204      | Lv Flomaton, Ala.....CT.....Ar      | ..... | 9.45     | .....    |
| f                        | 4.15     | PM       | 11.05    | Lv Century, Fla.....Lv              | ..... | 1.40     | .....    |
| .....                    | 4.23     | The Gulf | 206      | Lv Century, Fla.....Lv              | ..... | 9.33     | .....    |
| f                        | 4.47     | Wind     | 224      | Lv Molino▲.....Lv                   | ..... | 9.05     | .....    |
| .....                    | 4.59     | .....    | 233      | Lv Cantonment.....Lv                | ..... | N        | .....    |
| .....                    | 5.35     | .....    | 248      | Ar Pensacola.....Lv                 | ..... | 12.35    | .....    |
| .....                    | 6.30     | .....    | 248      | Lv Pensacola.....Ar                 | ..... | 7.45     | .....    |
| .....                    | .....    | .....    | .....    | Pensacola Bay                       | ..... | .....    | .....    |
| .....                    | .....    | .....    | .....    | Escambia Bay                        | ..... | .....    | .....    |
| .....                    | .....    | .....    | .....    | Mulat Bayou                         | ..... | .....    | .....    |
| .....                    | .....    | .....    | .....    | Lv Milton.....Lv                    | ..... | 6.40     | .....    |
| .....                    | .....    | .....    | .....    | Blackwater River                    | ..... | .....    | .....    |
| .....                    | .....    | .....    | .....    | Lv Harold▲.....Lv                   | ..... | 6.13     | .....    |
| .....                    | .....    | .....    | .....    | Lv Holts▲.....Lv                    | ..... | 6.02     | .....    |
| .....                    | .....    | .....    | .....    | Lv Milligan.....Lv                  | ..... | .....    | .....    |
| .....                    | .....    | .....    | .....    | Yellow River                        | ..... | .....    | .....    |
| .....                    | .....    | .....    | .....    | Lv Crestview.....Lv                 | ..... | 11.02    | .....    |
| .....                    | .....    | .....    | .....    | Lv DeFuniak Springs.....Lv          | ..... | 5.57     | .....    |
| .....                    | .....    | .....    | .....    | Lv Ponce de Leon.....Lv             | ..... | 4.49     | .....    |
| .....                    | .....    | .....    | .....    | Choctawhatchee River                | ..... | .....    | .....    |
| .....                    | .....    | .....    | .....    | Lv Caryville▲.....Lv                | ..... | 4.36     | .....    |
| .....                    | .....    | .....    | .....    | Lv Bonifay.....Lv                   | ..... | 4.25     | .....    |
| .....                    | .....    | .....    | .....    | Lv Chipley.....Lv                   | ..... | 4.06     | .....    |
| .....                    | .....    | .....    | .....    | Lv Cottondale.....Lv                | ..... | 3.49     | .....    |
| .....                    | .....    | .....    | .....    | Lv Marianna.....Lv                  | ..... | 9.18     | .....    |
| .....                    | .....    | .....    | .....    | Chipola River                       | ..... | .....    | .....    |
| .....                    | .....    | .....    | .....    | Lv Cypress▲.....Lv                  | ..... | 3.14     | .....    |
| .....                    | .....    | .....    | .....    | Lv Grand Ridge▲.....Lv              | ..... | 3.08     | .....    |
| .....                    | .....    | .....    | .....    | Lv Sneads.....Lv                    | ..... | 2.59     | .....    |
| .....                    | .....    | .....    | .....    | Apalachicola River                  | ..... | .....    | .....    |
| .....                    | .....    | .....    | .....    | Ar Chattahoochee, Fla.....CT.....Lv | ..... | 8.45     | .....    |
| .....                    | .....    | .....    | .....    | S. A. L. R. R.                      | ..... | .....    | .....    |
| .....                    | .....    | .....    | .....    | Lv Chattahoochee, Fla.....ET.....Ar | ..... | 9.35     | .....    |
| .....                    | .....    | .....    | .....    | Ar Quincy.....Lv                    | ..... | 9.07     | .....    |
| .....                    | .....    | .....    | .....    | Ar Tallahassee.....Lv               | ..... | 8.30     | .....    |
| .....                    | .....    | .....    | .....    | Ar Madison.....Lv                   | ..... | 7.10     | .....    |
| .....                    | .....    | .....    | .....    | Ar Live Oak.....Lv                  | ..... | 6.34     | .....    |
| .....                    | .....    | .....    | .....    | Ar Lake City.....Lv                 | ..... | 6.11     | .....    |
| .....                    | .....    | .....    | .....    | Ar Baldwin.....Lv                   | ..... | 11.09    | .....    |
| .....                    | .....    | .....    | .....    | Ar Jacksonville, Fla.....ET.....Lv  | ..... | 5.00     | .....    |
| .....                    | .....    | .....    | .....    | .....                               | ..... | 9.45     | .....    |

#### REFERENCE NOTES—Table 7

- C.T. Central Time. E.T. Eastern Time. f Stops on signal.
- A Stops 30 minutes for breakfast.
- M Stops to take or leave passengers to or from Tallahassee or Jacksonville or beyond.
- N Stops to leave or take pay passengers.
- ☑ Tickets may be exchanged at Railroad Ticket Office for tickets to be honored from Railroad Station, Flomaton, to Bus Station, Pensacola.
- ☐ Tickets may be exchanged at Railroad Ticket Office for tickets to be honored on Greyhound Buses between Railroad Stations.
- ▲ No facilities for handling baggage at this station; baggage should be checked to or from nearest station where facilities are available.

### RAILROAD AND SLEEPING CAR RATES IN EFFECT JULY 23, 1961

Fares published herein, both Rail and Pullman, are Fares in effect July 23, 1961. They are published as information only and are subject to change without notice, except as required by law. Federal Tax of 10 per cent NOT included.

|                              | RAILROAD FARES |             |             |             |             |             | PULL-MAN RATES |
|------------------------------|----------------|-------------|-------------|-------------|-------------|-------------|----------------|
|                              | In Coaches     |             |             | In Pullmans |             |             |                |
|                              | One Way        | 30 Day R.T. | 6 Mos. R.T. | One Way     | 30 Day R.T. | 6 Mos. R.T. | Lower Berth    |
| <b>Atlanta, Ga. to</b>       |                |             |             |             |             |             |                |
| Chattanooga, Tenn. ....      | \$ 4.15        | \$ 6.25     | \$ 7.50     | \$ 5.80     | \$ 8.70     | \$10.45     | \$ 6.10        |
| Chicago, Ill. ....           | 22.02          | 38.30       | 39.70       | 30.53       | 53.20       | 55.05       | 10.00          |
| Cincinnati, Ohio ....        | 14.70          | 22.05       | 26.50       | 20.41       | 30.65       | 36.75       | 6.60           |
| Cleveland, Ohio ....         | 25.15          | .....       | 47.15       | 36.95       | .....       | 69.80       | 10.00          |
| Columbus, Ohio ....          | 19.39          | .....       | 35.88       | 27.93       | .....       | 51.79       | 7.95           |
| Dallas, Tex. ....            | 24.99          | .....       | 45.00       | 34.64       | .....       | 62.40       | .....          |
| Detroit, Mich. ....          | 24.11          | .....       | 45.10       | 32.99       | .....       | 61.85       | 10.00          |
| Evansville, Ind. ....        | 14.09          | 21.15       | 25.40       | 19.39       | 29.10       | 34.95       | 6.10           |
| Houston, Tex. ....           | 26.70          | .....       | 48.10       | 37.01       | .....       | 66.65       | .....          |
| Knoxville, Tenn. ....        | 5.96           | 8.95        | 10.75       | 8.35        | 12.55       | 15.05       | 6.10           |
| Los Angeles, Cal. ....       | 64.56          | .....       | 120.30      | 90.39       | .....       | 161.00      | 26.80          |
| Louisville, Ky. ....         | 14.46          | 21.70       | 26.05       | 20.24       | 30.40       | 36.45       | 6.10           |
| Memphis, Tenn. ....          | 12.08          | 18.15       | 21.75       | 16.85       | 25.30       | 30.35       | .....          |
| Mobile, Ala. ....            | 10.76          | 16.15       | 19.40       | 15.07       | 22.65       | 27.15       | 6.10           |
| Nashville, Tenn. ....        | 8.79           | 13.20       | 15.85       | 12.32       | 18.50       | 22.20       | 6.10           |
| New Orleans, La. ....        | 15.10          | 22.65       | 27.20       | 21.15       | 31.75       | 38.10       | 7.05           |
| Pensacola, Fla. ....         | 10.31          | 15.50       | 18.60       | 14.44       | 21.70       | 26.00       | 6.10           |
| St. Louis, Mo. ....          | 19.49          | 29.25       | 35.10       | 26.44       | 39.70       | 47.60       | 8.30           |
| San Antonio, Tex. ....       | 32.18          | .....       | 57.95       | 44.69       | .....       | 80.45       | .....          |
| San Francisco, Cal. ....     | 70.68          | .....       | 120.30      | 98.86       | .....       | 161.00      | 26.80          |
| <b>Birmingham, Ala. to</b>   |                |             |             |             |             |             |                |
| Biloxi, Miss. ....           | 10.27          | 15.45       | 18.50       | 14.38       | 21.60       | 25.90       | 6.10           |
| Chicago, Ill. ....           | 20.79          | 34.55       | 38.00       | 27.34       | 47.90       | 49.25       | 9.15           |
| Cincinnati, Ohio ....        | 14.94          | 22.45       | 26.90       | 20.77       | 31.20       | 37.40       | 6.60           |
| Cleveland, Ohio ....         | 25.39          | .....       | 47.55       | 37.31       | .....       | 70.45       | 10.70          |
| Columbus, Ohio ....          | 19.63          | .....       | 36.28       | 28.29       | .....       | 52.44       | 7.95           |
| Denver, Colo. ....           | 37.75          | .....       | 67.95       | 52.78       | .....       | 95.05       | 14.70          |
| Detroit, Mich. ....          | 24.35          | .....       | 45.50       | 33.35       | .....       | 62.50       | 10.70          |
| Evansville, Ind. ....        | 11.57          | 17.40       | 20.85       | 15.84       | 23.80       | 28.55       | 6.10           |
| Houston, Texas. ....         | 22.41          | .....       | 40.35       | 31.00       | .....       | 55.80       | 8.70           |
| Indianapolis, Ind. ....      | 16.98          | .....       | 31.58       | 24.42       | .....       | 45.51       | 7.05           |
| Jacksonville, Fla. ....      | 13.34          | .....       | 24.05       | 18.67       | .....       | 33.65       | 7.05           |
| Los Angeles, Cal. ....       | 60.23          | .....       | 111.20      | 84.26       | .....       | 148.25      | 24.20          |
| Louisville, Ky. ....         | 11.94          | 17.95       | 21.50       | 16.69       | 25.05       | 30.05       | 6.10           |
| Miami, Fla. ....             | 24.46          | .....       | 44.05       | 34.23       | .....       | 61.65       | 10.70          |
| Mobile, Ala. ....            | 8.45           | 12.70       | 15.25       | 11.83       | 17.75       | 21.30       | 6.10           |
| Montgomery, Ala. ....        | 2.99           | 4.50        | 5.40        | 4.19        | 6.30        | 7.55        | .....          |
| Nashville, Tenn. ....        | 6.27           | 9.45        | 11.30       | 8.77        | 13.20       | 15.80       | 6.10           |
| New Orleans, La. ....        | 10.85          | 16.30       | 19.55       | 15.21       | 22.85       | 27.40       | 6.10           |
| New York, N. Y. ....         | 34.44          | .....       | 63.34       | 53.72       | .....       | 101.70      | .....          |
| North Miami, Fla. ....       | 24.20          | .....       | 43.60       | 33.90       | .....       | 61.05       | 10.70          |
| Pensacola, Fla. ....         | 8.00           | 12.00       | 14.40       | 11.20       | 16.80       | 20.20       | 6.10           |
| St. Louis, Mo. ....          | 15.67          | 23.55       | 28.25       | 19.37       | 29.10       | 34.90       | 7.05           |
| San Antonio, Tex. ....       | 28.19          | .....       | 50.75       | 39.38       | .....       | 70.90       | 11.45          |
| San Francisco, Cal. ....     | 65.61          | .....       | 111.20      | 91.79       | .....       | 148.25      | 24.20          |
| <b>Chattanooga, Tenn. to</b> |                |             |             |             |             |             |                |
| Atlanta, Ga. ....            | 4.15           | 6.25        | 7.50        | 5.80        | 8.70        | 10.45       | .....          |
| Cincinnati, Ohio ....        |                |             |             |             |             |             |                |



Fares published herein, both Rail and Pullman, are Fares in effect July 23, 1961. They are published as information only and are subject to change without notice, except as required by law. Federal Tax of 10 per cent NOT included.

RAILROAD AND SLEEPING CAR RATES IN EFFECT JULY 23, 1961

Table of Railroad Fares and Pullman Rates for Evansville, Ind., Louisville, Ky., Memphis, Tenn., and Mobile, Ala. to various destinations.

Table of Railroad Fares and Pullman Rates for Mobile, Ala. (Cont.) to various destinations, including Montgomery, Ala., Nashville, Tenn., and New Orleans, La.

RAILROAD AND SLEEPING CAR RATES IN EFFECT JULY 23, 1961

Fares published herein, both Rail and Pullman, are Fares in effect July 23, 1961. They are published as information only and are subject to change without notice, except as required by law. Federal Tax of 10 per cent NOT included.

Table of Railroad Fares and Pullman Rates for New Orleans, La. (Cont.) to various destinations, including St. Louis, Mo., and Wilmington, N.C.

Table showing Minimum Number Adult Rail Tickets Required Between Points on L&N R.R. for different services and berth types.

OPTIONAL ROUTES Via L.&N. R.R. The arrangements below are for Southbound travel, but the same privileges also apply Northbound between the points and via the routes indicated Southbound.

Rates for other Sleeping Car Accommodations Based on charge for Lower Berth as shown in tables on pages 15, 16 and 17. Applies only between points where through Pullman rates are published—not to combination rates. Federal tax of 10 per cent NOT included.

Table of Rates for other Sleeping Car Accommodations including Roomette, Bedroom, Compartment, Drawing Room, and Bedroom Suite.

RAIL TRAVEL CARDS Your RAIL-TRAVEL Credit Card gives you these distinct advantages— 1. Charge account service at ticket offices for Rail and Pullman tickets; meals, and baggage charges. 2. Eliminates necessity for carrying large amounts of cash.



TRAFFIC DEPARTMENT

W. GAVIN WHITSETT, Vice-President

P. E. GEIL, Assistant Vice-President
W. A. SPARKS, Assistant to Vice-President

PASSENGER

J. W. MOORE, General Passenger Agent... Louisville 1, Ky.
R. P. ETHRIDGE, Assistant General Passenger Agent... Louisville 1, Ky.

C. E. JEFFRIES, Assistant General Passenger Agent... Louisville 1, Ky.
P. A. WAGNER, Superintendent of Dining Cars... Louisville 1, Ky.

FREIGHT TRAFFIC—SALES AND SERVICE

J. K. WILLIAMS, General Traffic Manager... Louisville 1, Ky.
E. C. PATTON, Manager, Sales and Service... Louisville 1, Ky.
A. R. HARKLEROAD, Asst. to General Traffic Manager... Louisville 1, Ky.

F. C. STREET, Regional Traffic Manager... Louisville 1, Ky.
J. J. O'CONNOR, Regional Traffic Manager... Louisville 1, Ky.
J. W. SELLERS, Regional Traffic Manager... Louisville 1, Ky.

PIGGYBACK TRAFFIC

J. A. PARSONS, Director, Piggyback Traffic... Louisville 1, Ky.

D. F. JONES, Manager, Piggyback Sales and Service... Louisville 1, Ky.
C. E. THOMAS, Asst. Manager, Piggyback Sales and Service... Louisville 1, Ky.

FREIGHT TRAFFIC—RATES AND CHARGES

P. E. GEIL, Assistant Vice-President... Louisville 1, Ky.
W. D. BROEMAN, Assistant General Traffic Manager... Louisville 1, Ky.
W. F. BURGESS, Freight Traffic Manager... Louisville 1, Ky.

D. M. PEDIGO, Assistant General Freight Agent... Louisville 1, Ky.
J. S. GAINES, Assistant General Freight Agent... Louisville 1, Ky.
L. N. OSTERMAN, Assistant General Freight Agent... Louisville 1, Ky.

COAL TRAFFIC

L. C. GOERING, Coal Traffic Manager... Louisville 1, Ky.
G. M. TIMBERMAN, Manager, Coal Sales and Service... Louisville 1, Ky.
Z. E. SCOTT, Jr., Coal Traffic Analyst... Louisville 1, Ky.

INDUSTRIAL DEVELOPMENT

A. JAMES, Jr., Director of Industrial Development... Louisville 1, Ky.
W. P. DERMOTT, Industrial Agent... Louisville 1, Ky.
W. W. CARTER, Industrial Agent... Louisville 1, Ky.

PASSENGER AND FREIGHT REPRESENTATIVES

ANNISTON, ALA.

1300 Walnut Ave., Phone ADams 7-8661
J. M. BROCK, General Agent.
C. DIAMOND, Traveling Freight Agent.

BOSTON 8, MASS.

530 Old South Bldg., 294 Washington St., Phone Liberty 2-5243
W. C. FORSYTHE, General Agent.
H. C. WEDDLE, Traveling Freight Agent.

CINCINNATI 3, OHIO

Room C-21, Cincinnati Union Terminal, Phone MAin 1-2574
LEONARD F. VOGT, District Passenger Agent.
OTTO EHRINGER, Passenger Traffic Representative.
RUFUS KINGCADE, Passenger Representative

ATLANTA 3, GA

Union Station, 2 Forsyth St. N.W.
Phone JAckson 3-2777
CLARK DUNN, Division Passenger Agent.
MARTIN KINZEL, Traveling Passenger Agent.
G. M. DUGAN, City Passenger Agent.

BUFFALO, N. Y.

748 Ellicott Sq. Bldg., Phone TL 6-5690
K. E. SKILLMAN, General Agent.
J. H. KELLEY, Traveling Freight Agent.

UNION TERMINAL, CHERRY ST., KY.

Union Terminal, Phone CHerry 1-8100
J. W. GETZENDANNER, Ticket Agent.

AUGUSTA, GA.

Rooms 5 and 7, Campbell Bldg., Phone 722-5126
H. W. BROWN, General Agent.
C. E. JOHNSON, Freight Traffic Agent.

CHARLOTTE 2, N. C.

1006 Johnston Bldg., Phone EDison 4-3524
J. E. FAIRLEY, General Agent.
C. L. METHVIN, Jr., Traveling Freight Agent.

732 Dixie Terminal Bldg., Phone PARKway 1-7130

C. R. McFARLAND, Division Freight Agent.
J. E. HART, Commercial Agent.
C. G. VAN FLANDERN, Traveling Freight Agent.
L. E. ESTILL, Freight Traffic Agent.
J. R. NEWTON, Jr., Freight Traffic Agent.
L. H. THAMES, Freight Traffic Agent.
L. T. SMITH, Coal Traffic Agent.

BIRMINGHAM 3, ALA.

L & N Station, 1821 Morris Ave., Phone FAirfax 2-0341
J. D. LEE, District Passenger Agent.
J. A. HUGHES, Jr. Passenger Representative.

CHATTANOOGA 2, TENN.

Union Passenger Station, Phone AMherst 6-8261
M. J. ECKHOFF, District Passenger Agent.
Union Passenger Station, Phone AMherst 6-8657
C. T. MAY, Ticket Agent.

CLARKSVILLE, TENN.

First National Bank Bldg., Phone 645-4916
J. W. GLEESON, District Freight Agent.

CHICAGO 3, ILL.

822 Bankers Bldg., 105 W. Adams St., Phone FRanklin 2-7595
T. M. STRANE, General Agent Passenger Dept.
Freight Traffic Department, Phone FRanklin 2-6441
C. C. VAUGHN, Traffic Manager
E. C. MYERS, General Agent
K. D. ROANE, Asst. to General Agent.
R. G. McGE, Commercial Agent.
J. H. VAUGHN, Traveling Freight Agent.
J. J. WALSH, Freight Traffic Agent.
L. D. CARY, Freight Traffic Agent.
H. T. GRIFFITH, Freight Traffic Agent
J. R. CLAXON, Coal Traffic Agent.

CHICAGO 3, ILL.

822 Bankers Bldg., 105 W. Adams St., Phone FRanklin 2-7595
T. M. STRANE, General Agent Passenger Dept.
Freight Traffic Department, Phone FRanklin 2-6441
C. C. VAUGHN, Traffic Manager
E. C. MYERS, General Agent
K. D. ROANE, Asst. to General Agent.
R. G. McGE, Commercial Agent.
J. H. VAUGHN, Traveling Freight Agent.
J. J. WALSH, Freight Traffic Agent.
L. D. CARY, Freight Traffic Agent.
H. T. GRIFFITH, Freight Traffic Agent
J. R. CLAXON, Coal Traffic Agent.

CLEVELAND 14, OHIO

625 Superior Bldg.,
815 Superior Ave., Phone CHerry 1-3432
J. F. MANN, General Agent.
R. E. WAKEMAN, Traveling Freight Agent.
K. L. MEREDITH, Freight Traffic Agent.

DALLAS 1, TEXAS

703 Kirby Bldg., Phone RIverside 2-5273
R. L. HAWKINS, District Freight Agent.
T. P. TROY, Traveling Freight Agent.

DETROIT 26, MICH.

1104 Lafayette Bldg., Phone WOodward 1-3214
L. D. MISKELL, General Agent.
G. M. REYNOLDS, Jr., Traveling Freight Agent.
J. H. PEAVLER, Traveling Freight Agent.
J. P. HILL, Freight Traffic Agent.
J. G. HETTIGER, Coal Traffic Agent.

EVANSVILLE 8, IND.

L & N Station, Phone HArrison 5-2278
R. L. MOYE, District Passenger Agent.
L & N Station, Phone HArrison 5-5238
M. D. FINNEGAN, Ticket Agent.
L & N Station, Phone HArrison 5-2278
T. R. HOOK, JR., Division Freight Agent.
P. J. WIBBLES, Traveling Freight Agent.
H. B. FORD, Traveling Freight Agent.
J. B. AMMON, Freight Traffic Agent.

GADSDEN, ALA.

3425 Forrest Ave., P.O. Box 215, Phone Liberty 7-6351
-ERIC ELLIS, District Freight Agent.

HABANA CUBA

Apartado 138, Phone A-7322
W. HARRY SMITH AGENCIES, Inc., Agentes Generales

HOUSTON 2, TEXAS

423-425 Banker's Mortgage Bldg., Phone FAirfax 3-3382
P. W. LAWRENCE, District Freight Agent.
J. A. PHILLIPS, Traveling Freight Agent.
J. R. FROST, Freight Traffic Agent.

HUNTSVILLE, ALA.

L & N Station, 119 Woodson St., N. W., Phone 534-1842
J. L. PYLANT, Freight Traffic Agent.

INDIANAPOLIS 4, IND.

608 Merchants Bank Bldg., Phone MEIrose 7-2785
K. G. SCOTT, General Agent.
H. E. RAFFERTY, Freight Traffic Agent.

JACKSON, TENN.

L & N Station, South Royal St., Phone 7-1761
P. L. RAPER, District Freight Agent.

JACKSONVILLE 2, FLA.

516 Florida Title Bldg., Phone ELgin 6-8226
J. H. HOWARD, District Passenger Agent
516 Florida Title Bldg., Phone ELgin 6-4209
R. E. HERRINGTON, Florida General Agent.
W. R. WALLACE, General Agent.
E. H. JAMES, Freight Traffic Agent.

KANSAS CITY 6, MO.

536 Railway Exchange Bldg., Phone VIctor 2-6774
I. J. BORDERS, General Agent.
G. A. KIDWELL, Traveling Freight Agent.
C. T. SCHNEIDER, Freight Traffic Agent.

KNOXVILLE 2, TENN.

L & N Station, Phone 523-6193
J. J. PORTWOOD, District Passenger Agent.
L & N Station, Phone 522-0833
R. Q. HOLIFIELD, Ticket Agent.
L & N Station—Phone 522-3187
E. M. BLANKNER, Division Freight Agent.
J. E. ROBERTS, Traveling Freight Agent.
J. W. SMITH, Traveling Freight Agent.
S. L. CARSON, Freight Traffic Agent.
W. C. ANDREWS, Freight Traffic Agent.

LEXINGTON, KY.

101 East High Street, Phone 5-4149
J. E. NALL, District Freight Agent.
J. L. VINEYARD, Traveling Freight Agent.

LITTLE ROCK, ARK.

314 Gazette Bldg., Phone FRanklin 4-2827
A. J. JANSSON, District Freight Agent.
L. C. POLLARD, Traveling Freight Agent

LOS ANGELES 14, CALIF.

606 So. Hill St., Room 603, Phone MAdison 2-1145
P. B. SHELTON, District Freight Agent.
E. H. HOLT, Freight Traffic Agent.

LOUISVILLE 3, KY.

Passenger Service
Room 101, Lobby, Union Station,
10th & Broadway—Phone JUUniper 5-5325
L. R. WORLEY, District Passenger Agent.
O. M. AHERN, City Passenger Agent.
J. M. BIRCHLER, Passenger Representative.
Ticket Office—Union Station, Phone JUUniper 4-2241
E. A. WALKER, Ticket Agent.
Room 100, Lobby, Union Station, Phone JUUniper 5-4149
W. J. McDONALD, Division Freight Agent.
W. B. SCOTT, Commercial Agent.
J. A. GRUVER, Traveling Freight Agent.
C. G. CONLEY, Freight Traffic Agent.
W. S. GAHAN, Freight Traffic Agent.
IVAN SEIBERT, JR., Freight Traffic Agent.

MACON, GA.

201 Terminal Station, Phone SHerwood 3-4663
T. M. FAULKNER, District Freight Agent.
E. SMITH, Traveling Freight Agent.

PASSENGER AND FREIGHT REPRESENTATIVES

(continued)

MEMPHIS 3, TENN.

922 Falls Bldg., 22 No. Front St., Phone JAckson 6-0567
J. L. STREET, Jr., District Passenger Agent
Union Station, Phone JAckson 6-4101
R. M. BONDURANT, Ticket Agent.
922 Falls Bldg., Phone JAckson 6-5851
G. W. RYAN, Jr., Division Freight Agent.
P. L. SAFFER, Traveling Freight Agent.
J. R. WILLIAMS, Traveling Freight Agent.
P. W. HANSELL, Freight Traffic Agent.
R. S. McCALLEN, Freight Traffic Agent.
R. O. STEWART, Freight Traffic Agent.

MIAMI 32, FLA.

1137 Ingraham Bldg., Phone FRanklin 3-0911
L. L. SARGENT, District Passenger Agent.
1137 Ingraham Bldg., Phone FRanklin 1-9614
W. F. FARLEY, District Freight Agent.
G. S. FINNEGAN, Traveling Freight Agent.
W. V. HARPER, Traveling Freight Agent.

MILWAUKEE 3, WISC.

1007 Maestic Bldg., 231 W. Wisconsin Ave.,
Phone BRoadway 3-7300
I. T. WESTERMAN, General Agent.
E. J. BLAES, Traveling Freight Agent.

MINNEAPOLIS 2, MINN.

1445 Rand Tower, 527 Marquette Ave.,
Phone FEderal 2-0681
J. F. STENSON, General Agent.
L. T. CHILDERS, Traveling Freight Agent.

MOBILE 11, ALA.

L & N Passenger Station, 11 Government Street,
Phone HEmlock 2-2777
D. C. LANIER, District Passenger Agent.
Phone HEmlock 2-1761
C. J. HAYS, Ticket Agent.
L & N Passenger Station, 11 Government Street,
Phone HEmlock 3-2713
E. G. WHITE, Division Freight Agent.
E. M. HUNT, Freight Traffic Agent.
W. E. DIAL, Traveling Freight Agent.

MONTGOMERY 4, ALA.

Union Station—Phone 263-3757
R. A. LAUN, District Passenger Agent.
H. W. ROWELL, Passenger Agent.
Union Station, Phone 264-7385
H. F. FIELDS, Ticket Agent.
Union Station, Phone 262-7741
L. M. DUNFORD, General Agent.
R. C. MUNDY, Traveling Freight Agent.
R. G. RUSSELL, Freight Traffic Agent.

NASHVILLE 3, TENN.

Union Station, Phone ALpine 4-0565
H. T. SCHNEIDER, District Passenger Agent.
T. H. NOWELL, City Passenger Agent.
Union Station, Phone ALpine 5-6441
W. A. LIGHTFOOT, Ticket Agent.
Room 204, Union Station, Phone ALpine 5-0601
J. H. SUTTON, Traffic Manager.
V. B. WILSON, Traveling Freight Agent.
J. E. NARON, Freight Traffic Agent.
J. F. TARKINGTON, Freight Traffic Agent.
W. R. ALLRED, Freight Traffic Agent.

NEW ORLEANS 13, LA.

216 Union Passenger Terminal
Traffic Manager, Phone JAckson 5-1346
R. A. STANLEY
Passenger Service, Phone JAckson 2-4191
A. E. JACKSON, Division Passenger Agent.
E. S. MIDDLETON, Passenger Traffic Representative.
R. J. LAGARDE, City Passenger Agent.
Freight Service, Phone JAckson 5-3284
L. E. POWER, Division Freight Agent.
L. R. MARTIN, Commercial Agent.
T. S. BENEFIELD, Traveling Freight Agent.
F. A. REPPPEL, Freight Traffic Agent.
A. J. ANGEL, Freight Traffic Agent.
Union Passenger Terminal, Phone 524-8541
E. P. CAPELLE, Ticket Agent

NEW YORK 17, N. Y.

3107 Daily News Building, 220 East 42nd St., Phone TN 7-3200
T. C. BLACK, General Eastern Passenger Agent.

S. E. FRANNEY, Traffic Agent.
M. R. NEEL, JR., General Agent.
D. J. McCABE, Foreign Freight Agent.

NEW YORK 36, N. Y.—Continued

T. A. DOWNES, Traveling Freight Agent.
M. J. FLYNN, Freight Traffic Agent.
J. J. HOULIHAN, Freight Traffic Agent.
R. E. ANDREWS, Freight Traffic Agent.

OMAHA 2, NEBR.

613 Grain Exchange Bldg., 19th and Harney Streets
Phone 341-2290
M. E. SILLIN, General Agent.

ORLANDO, FLA.

706 Metcalf Bldg., Phone GArden 3-1501
R. B. ELLIOTT, District Freight Agent.

OWENSBORO, KY.

L & N Station—Phone MUrray 3-1119
C. M. BEELER, District Freight Agent.

PENSACOLA, FLA.

L & N Station—Phone HEmlock 2-8484
S. H. WILHOITE, District Passenger Agent.
Mrs. A. B. HARCUS, Ticket Agent.
L & N Station, Phone HEmlock 8-4488
P. C. SWANN, Division Freight Agent.
JOHN L. BLAIR, Freight Traffic Agent.

PEORIA, ILL.

420 Commercial Natl. Bk. Bldg., 301 So. Adams St.
Phone 674-1715
R. M. BRENNAN, General Agent.
R. I. JAMES, Traveling Freight Agent.

PHILADELPHIA 9, PA.

1026 Fidelity-Phila. Trust Bldg., 123 So. Broad St.
Phone FEnnypacker 5-0446
E. V. FITZPATRICK, General Agent.

PITTSBURGH 22, PA.

919 Henry W. Oliver Bldg., Phone ATlantic 1-9610
S. K. JOHNSON, General Agent.
E. R. BUMBUS, Traveling Freight Agent.
A. L. NASH, Traveling Freight Agent.
J. F. GORDON, Freight Traffic Agent.

PORTLAND 4, ORE.

618 Pacific Bldg., Phone CApitol 7-0388
C. T. LINDEMANN, District Freight Agent.
L. T. McVEIGH, Traveling Freight Agent.

SAN FRANCISCO 5, CALIF.

944 Monadnock Bldg., Phone EXbrook 2-1366
F. J. BANTLE, General Western Freight Agent.
R. L. WESTERMAN, Traveling Freight Agent.
CHARLES NICK, Traveling Freight Agent.

SAVANNAH, GA.

1012 Realty Bldg., Phone ADams 2-4634
W. R. WILSON, General Agent.
R. M. HENDLEY, Freight Traffic Agent.

SELMA, ALA.

L & N Station, Phone TRinity 4-4391
M. J. JONES, Commercial Agent.

ST. LOUIS 2, MO.

906 Landreth Building, Phone CEntral 1-8006
W. A. RUSSELL, District Passenger Agent.
Union Station, Phone GEneva 6-2500
F. S. DONNELLY, Ticket Agent.
910 Landreth Building, Phone CEntral 1-8000
J. J. GLEESON, Division Freight Agent.
H. B. SIEKMANN, Traveling Freight Agent.
A. J. BECKER, Freight Traffic Agent.
E. H. ELKIN, Freight Traffic Agent.
R. J. FLANAGAN, Freight Traffic Agent.
L. H. DEMOOR, Freight Traffic Agent.
W. R. GREGORY, Freight Traffic Agent.

TAMPA 1, FLA.

346 Knight & Wall Bldg., 308 Tampa St., Phone 2-2046
E. B. STANLEY, District Freight Agent.
P. D. MCGOWAN, Traveling Freight Agent.

TULSA 3, OKLA.

812 Daniel Bldg., Phone LU 7-4674
R. F. BELL, District Freight Agent.

WASHINGTON 5, D.C.

Suite 508, 711—14th Street, N.W.
Phone REpublic 7-2551
H. E. SEHLER, General Agent.