

Discontinued

Aug. 31-1955

# FORT DODGE, DES MOINES & SOUTHERN RAILWAY

## Passenger Train Service Time Tables

Corrected to July 1, 1955

### DES MOINES : BOONE : FORT DODGE

#### NORTH BOUND

MILES	STATIONS	NO. 3 P.M. Daily
.0	Lv. DES MOINES . . .	1:40
1.4	" Dean Avenue . . .	f 1:43
2.1	" Easton . . . . .	f 1:47
4.3	" Highland . . . . .	f 1:51
5.6	" Swanwood . . . . .	f 1:53
9.2	" Oralabor . . . . .	f 1:59
11.3	" Ankeny . . . . .	2:04
14.4	" Wagner . . . . .	f 2:09
17.5	" Alleman . . . . .	2:15
22.5	" Huxley . . . . .	f 2:22
24.9	" Midvale . . . . .	f 2:27
28.4	" Kelley . . . . .	2:32
31.5	" Napier . . . . .	f 2:37
36.8	" Ericson . . . . .	f 2:47
42.4	Ar. BOONE . . . . .	3:00 P.M.

MILES	STATIONS	No. 1 DAILY A.M.
42.4	Lv. BOONE . . . . .	Lv. 8:30
48.6	Gravel Pit . . . . .	" f 8:46
50.6	Fraser . . . . .	" 8:51
52.7	Niles . . . . .	" f 8:57
53.7	Wolf . . . . .	" f 8:59
58.6	Boxholm . . . . .	" 9:10
62.7	Hope . . . . .	" 9:16
66.6	Harcourt . . . . .	" 9:22
70.9	Palm Grove . . . . .	" f 9:28
73.9	Lundgren . . . . .	" f 9:33
77.9	Roberts . . . . .	" f 9:39
78.9	Summit . . . . .	" f 9:41
80.8	Shady Oak . . . . .	" f 9:46
82.8	East Fort Dodge . . . . .	" 9:52
84.8	Ar. FORT DODGE . . . . .	Ar. 10:00 A.M.

f Denotes flag stop.

### FORT DODGE : BOONE : DES MOINES

#### SOUTH BOUND

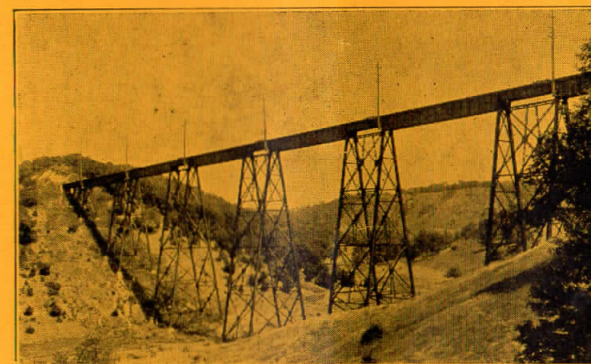
MILES	STATIONS	No. 2 DAILY A.M.
.0	Lv. FORT DODGE . . .	10:15
1.9	" East Fort Dodge . . .	10:22
4.8	" Shady Oak . . . . .	f 10:28
5.9	" Summit . . . . .	f 10:33
6.8	" Roberts . . . . .	f 10:35
10.9	" Lundgren . . . . .	f 10:41
13.8	" Palm Grove . . . . .	f 10:46
18.1	" Harcourt . . . . .	10:52
22.0	" Hope . . . . .	10:58
26.1	" Boxholm . . . . .	11:04
31.1	" Wolf . . . . .	f 11:15
32.1	" Niles . . . . .	f 11:17
34.2	" Fraser . . . . .	11:21
36.2	" Gravel Pit . . . . .	f 11:25
42.4	Ar. BOONE . . . . .	11:43
	Lv. BOONE . . . . .	11:55
53.3	" Napier . . . . .	f 12:13
56.4	" Kelley . . . . .	12:20
59.9	" Midvale . . . . .	f 12:25
62.3	" Huxley . . . . .	f 12:31
67.3	" Alleman . . . . .	12:39
70.4	" Wagner . . . . .	f 12:44
73.5	" Ankeny . . . . .	12:51
75.6	" Oralabor . . . . .	f 12:56
79.2	" Swanwood . . . . .	f 1:01
80.3	" Highland . . . . .	f 1:03
82.5	" Easton . . . . .	f 1:07
83.4	" Dean Avenue . . . . .	f 1:11
84.8	Ar. DES MOINES . . . . .	1:20 P.M.

f Denotes flag stop.



# FORT DODGE, DES MOINES & SOUTHERN RAILWAY CO.

General Office: BOONE, IOWA



All-steel railroad bridge, 156 feet high, 800 feet long

# Fort Dodge, Des Moines & Southern Railway Company

General Offices: Boone, Iowa

Telephone: 164

## GENERAL OFFICERS

ARTHUR P. WHELOCK, *President* . . . Boone, Iowa  
ALLEN WHITFIELD, *Secretary* . . . Des Moines, Iowa  
DEAN A. BRILEY, *Asst. to the President* Boone, Iowa

## TRAFFIC

P. D. ROBERTSON, *Traffic Manager* . . . Boone, Iowa  
J. E. RENQUIST, *Gen'l Freight Agent* Fort Dodge, Iowa  
7 South Eleventh Street Walnut 1232  
S. J. KARTHAUS, *Gen'l Freight Agent* Des Moines, Iowa  
815 Register & Tribune Building Tel. 2-5487  
LOUIS G. HALLECK, *Gen'l Freight Agent* Chicago 4, Ill.  
327 South La Salle St. Building Harrison 7-3938  
R. M. FRIDHOLM, *Traveling Frt. Agent* . . . Boone, Iowa

## OPERATING

C. J. HILTS, *Superintendent* . . . Boone, Iowa  
JOE R. TEAGARDEN, *Master Mechanic* . . . Boone, Iowa  
Telephone: 170  
GEORGE DULEY, *Supt. of Terminals* Fort Dodge, Iowa  
Telephone: Walnut 3703  
LOUIS J. ICK, *Purchasing Agent* . . . Boone, Iowa  
Telephone: 170

## ACCOUNTING

IRA A. SWANDER, *Vice-Pres. and Treas.* Boone, Iowa  
RALPH G. ADES, *Assistant Treasurer* . . . Boone, Iowa  
W. A. CURRAN, *Auditor and Asst. Secy.* Boone, Iowa

## ELECTRICAL

L. W. LAUGHLIN, *Chief Electrical Engr.* Boone, Iowa  
H. H. EVERTS, *Electrical Engineer* . . . Boone, Iowa  
WALTER HENRY, *Signal Engineer* . . . Boone, Iowa

## MAINTENANCE OF WAY

R. E. PATTERSON, JR., *Chief Engineer* . . . Boone, Iowa  
DON D. JONES, *Roadmaster* . . . Boone, Iowa

## CHIEF SURGEON

DR. W. H. LONGWORTH . . . Boone, Iowa  
Office Telephone: 134

## FACTS ON NATURAL RESOURCES

### BOONE, IOWA

Three to four miles northwest of the City of Boone, there are large deposits of shale with very little cover, which can be easily quarried. There is also at the same location along the Des Moines River, an underground deposit of limestone, the top bed of which is 150 feet thick. The shale, approximately 250 feet thick, overlies the limestone.

About five miles north of this area, along the Des Moines River, there is a large deposit of silica sand, varying in thickness from 30 to 50 feet, the deposit being estimated at 10,000,000 to 20,000,000 tons. There are also mineable coal veins four to five feet in thickness.

The Northern Natural Gas Company built a new pipeline across this area in 1954. There are two power plants with lines into the area, the Iowa Electric Light & Power Company plant at Boone, with a capacity of 37,000 kilowatts, and the Fort Dodge, Des Moines & Southern plant, eight miles north of Boone at Fraser, with a capacity of 12,500 kilowatts. The Fort Dodge, Des Moines & Southern Railway line runs through this area with connecting facilities to all of the major trunk lines through central Iowa, including the Chicago & North Western and the Chicago, Milwaukee, St. Paul & Pacific lines at Boone.

The large deposits of shale, limestone, silica sand, and coal, along with the availability of natural gas, electric power, water, good railway facilities, and an ample labor supply, make available at one location all of the most important requirements for a cement manufacturing industry, or the manufacture of brick and tile or other ceramic products.



*White Transfer & Storage Company, Fort Dodge, Iowa*  
Fireproof warehouse; merchandise and machinery storage; pool car distribution; located on Fort Dodge-Des Moines Line.

## BOONE, IOWA

### 'The Typical Midwest City of the United States'

Boone, Iowa, is the home office of the Fort Dodge, Des Moines & Southern Railway and is a railroad center of Iowa with the Chicago & North Western Railway's Iowa Division offices also in Boone and the Chicago, Milwaukee, St. Paul & Pacific Railway offering service.

In addition to the railroad industry, which pours in over \$12,000,000 a year in pay rolls to Boone, there are some 20 other industries doing

serves the city with natural gas to all its customers. Its city water works is more than adequate to provide water for all of its present customers and others wishing service.

A fine system of public schools from kindergarten through junior college as well as two parochial schools offer the highest type of educational needs to over 3,000 children. Its more than 20 churches of all well-known denomina-



business in the city. Several of its firms do a world-wide business, shipping to all points.

Located on United States Highway 30 and Iowa Highways 60 and 64, Boone is a city of fine homes, outstanding parks and recreational facilities, and has every advantage needed to attract more industry within its limits. The Iowa Electric Light & Power Company has one of its largest generating plants located in Boone and also

tions provide the religious emphasis for its citizens.

Boone is well located in the central part of Iowa and is a natural site for many potential industries.

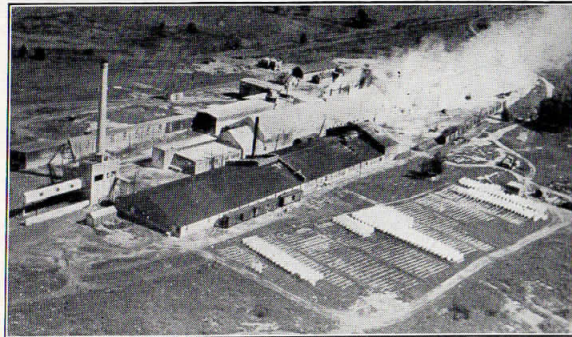
In addition to many other features, Boone can boast of being the birthplace of the nation's First Lady, Mrs. Dwight D. Eisenhower.

## FORT DODGE, IOWA

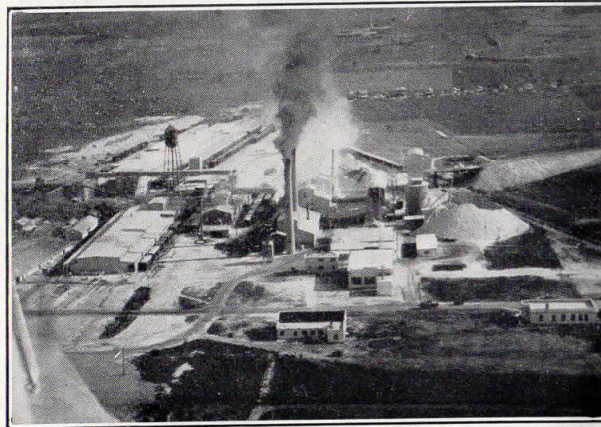
*'An Industrial City in the Heart of the Corn Belt'*

Four large brick and tile plants, four gypsum companies, a number of farm machinery manufacturers, a soybean processing plant, a large pork packing plant operated by George A. Hormel & Company, a pharmaceutical and biological products plant, and a number of others help lay claim to Fort Dodge's slogan of an industrial city.

Approximately 27,000 persons live in the Webster County seat city which is served by four



*The Certainteed Products Corporation  
(Gypsum Products)  
Served by the F. D., D. M. & S. Ry.*

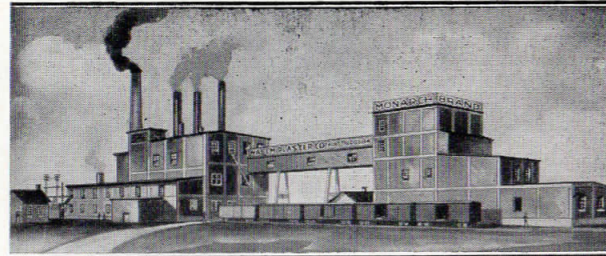


*United States Gypsum Company (Gypsum Products)  
Served by the F. D., D. M. & S. Ry.*

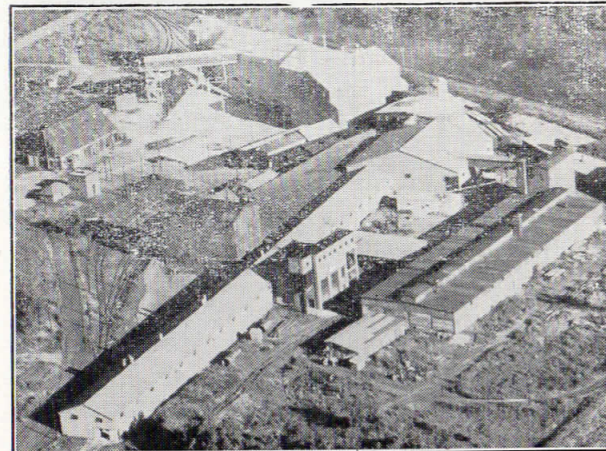
railroads. The city has both natural gas and electricity for residential, commercial, and industrial use. Telephone, water, and sewage services are also included.

Outstanding public and parochial educational facilities through the grades and up to and including a junior college are also available. A business college and a school of cosmetology are also included in the city's educational facilities.

A number of excellent locations which should be very suitable for industrial use with a number of them on trackage and having access to the principal highways through the city, are available.



*The Celotex Corporation (Gypsum Products)  
Served by the F. D., D. M. & S. Ry.*



*National Gypsum Company (Gypsum Products)  
Served by the F. D., D. M. & S. Ry.*

## WEBSTER CITY, IOWA

The county seat of Hamilton County, Webster City, is located in the center of the nation's hog and corn belt. Many industries give this community of 7,611 persons a well balanced economy, which also includes the agricultural support from the surrounding trade territory.

Products of the city's industries include washing machines, sieves and chaffers for threshers and combines, electric football and basketball



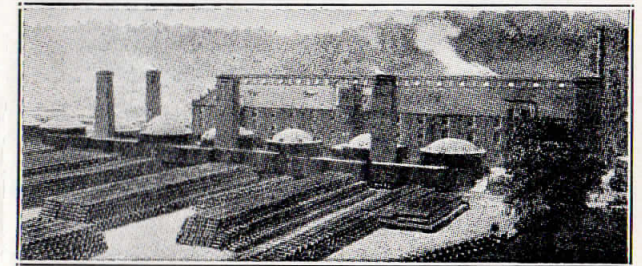
*Hart-Carter, Manufacturer of Thresher Screens—Located on  
the Ft. D., D. M. & S. Ry.*

scoreboards, tiling spades, cultivator shoves and tractor sweeps, hog and poultry troughs, self-feeders and waterers, fertilizers, insecticides, aluminum, gray iron, and zinc base castings, screw machine products, heavy and ornamental hardware, ready mixed concrete, tools, dies, jigs and fixtures, and the many printed articles from commercial printing shops. Also many food products are processed, including fresh and cured meats and sausages, butter and ice cream, bakery products, eggs and poultry products.

The city, governed by a council-manager type, one of the oldest of its type in the country, boasts of its own power plant, water plant with softened water, besides a natural gas supply, telephone service, and new sewage disposal plant. Three railroads, two bus lines, and other forms of transportation serve the city, which also has a Class 2 type of airport.

## LEHIGH, IOWA

Lehigh is located in Webster County and is best known for its clay tile and brick industries, the products of which are shipped throughout the country. Recent construction by the Fort Dodge-Des Moines Line at Lehigh assures better service for both the community and the industries located in that area. A town nestled in the hills, it offers many attractive industrial sites for allied users of their products.



*Lehigh Sewer Pipe & Tile Company, Lehigh, Iowa*

## RINARD, IOWA

A small town in Calhoun County boasting of the only union railway station in Iowa, has two active churches, a consolidated 12-grade school, sewage disposal system, and ample industrial site space served by two railroad systems. The community of 146 enjoys plenty of power service and natural gas lines are within piping distance.

## HARCOURT, IOWA

Also located in Webster County, Harcourt has natural gas, city water, and electrical power within its city limits as well as a fine consolidated school. It has 303 people within its limits and also has rail service for any interested industry seeking a site in this rural heart of Iowa.

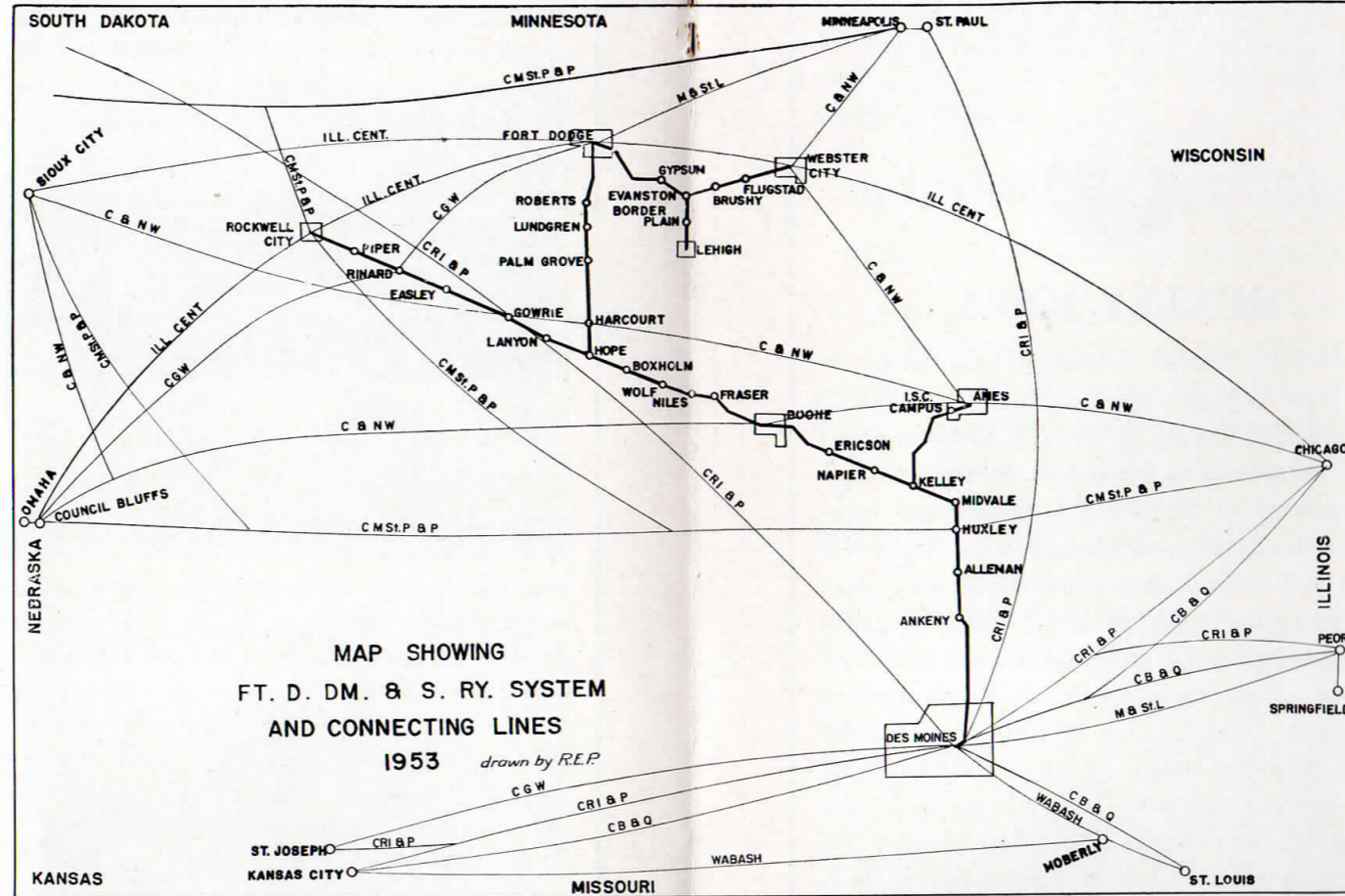
The  
**FORT DODGE, DES MOINES  
 & SOUTHERN**

**Has**

- an average of ten freight trains a day.
- overnight freight service on its lines.
- through rates and routes between its stations and all stations in the United States.
- free pick-up and delivery service on less than carload shipments.
- a minimum charge of \$1.61 for less than carload shipments.
- track connections with all railroads crossing Iowa from east to west and north to south.
- exceptionally fine locations for industrial sites.



**SYSTEM MAP**



The  
**FORT DODGE, DES MOINES  
 & SOUTHERN**

**Does**

- want your freight business, both carload and less than carload
- pay taxes amounting to more than one hundred and twenty-five thousand dollars a year in the territory it serves.
- spend over a half million dollars a year for material and supplies.
- have an annual pay roll of nearly one and one-half million dollars.

**F**AST **D**EPENDABLE **D**ELIVERY **M**EANS **S**ATISFACTION

## KELLEY, IOWA

Many people working in larger surrounding cities have discovered this small, clean, Story County community an ideal place in which to live. Electrical power and a more than adequate city water supply system are available to the more than 250 persons living there. A modern, seven-grade consolidated school is located at Kelley with high school students being transported by bus to nearby Huxley.

The Tyler phosphate distributing plant, together with two large grain elevators, supply the industrial emphasis for Kelley. More than adequate industrial sites are available on trackage which would be ideal sites for plants looking for a small town site.

## GOWRIE, IOWA

This progressive Webster County town has a number of fine businesses served by the Fort Dodge, Des Moines & Southern Railway and is a town of many fine homes, a good school, and excellent churches. It invites location of small industries which can be adapted to an agricultural setting.

## BOXHOLM, IOWA

One of the largest and newest grain storage elevators has been built on the track side of the Fort Dodge-Des Moines Line at Boxholm, giving adequate storage for the farmers in this northwest Boone County community. A thriving town serving the rural areas of northern Boone County and southern Webster County, Boxholm boasts of a new addition to its consolidated school, its fine churches, and many good homes.

## FRASER, IOWA

Fraser is noted as the site for the modern-equipped power plant of the Fort Dodge, Des Moines & Southern and might be termed the 'electrical hub' of the railroad. Fraser was formerly a coal mining community but now is a small community mainly composed of workers at the power plant. Two new bridges span the Des Moines River at Fraser replacing the ones ravaged by severe June, 1954, Des Moines River floods.



Des Moines River

Near Fraser, Iowa

## HUXLEY, IOWA

Conveniently located between Ames, home of Iowa State College, and Des Moines, capital of Iowa, Huxley boasts of being a good business center and a town of fine homes. Some of its 422 persons work at Ames or Des Moines and commute to this quieter, clean small town. Light and power and a more than adequate water system provide the necessary utilities needed. Fine fire fighting equipment is owned by the city as well as its own street maintenance and construction equipment. Huxley has a 12-grade consolidated school and is the site of the 50-year-old Farmers' Co-operative Creamery. Huxley is served by the Fort Dodge, Des Moines & Southern Railway and the Chicago, Milwaukee, St. Paul & Pacific Railway and is located on United States Highway 69. Many fine industrial sites along rail sidings and along Highway 69 are available. The town has several fine business establishments more than adequate for its residents and for the tourists who go through Huxley.

## ANKENY, IOWA

During World War II Ankeny became well-known throughout the country for its making of munitions and today Ankeny still remains the scene of great industrial activity. The Fort Dodge-Des Moines Line serves this rapidly growing community to which many are coming to find comfortable living quarters. Adequate space is available for further industrial expansion in this area which provides all the needed utilities for such expansion.

## ROCKWELL CITY, IOWA

*'The Golden Buckle on the Corn Belt'*

The county seat of Calhoun County, located in the center of one of the richest agricultural counties in the United States, Rockwell City is accessible by two paved highways and four railroads. Also centered in the heart of northwest Iowa's recreational area, lakes provide recreational facilities in the form of boating, fishing, and swimming. The 1950 census shows over 2,700 persons living in this beautiful city, which has five churches, a public library, both public and parochial schools, and is also the home of the state women's reformatory. The latest Department of Agriculture figures show that Calhoun County leads Iowa for the five-year average value of all crops produced per acre and its crop production index (combined grain and seed yield per acre of all land in farms) also was the highest in the state. In addition to the transportation facilities, adequate power is also available. Many fine industrial sites, particularly for agricultural type industries, are obtainable.

## ALLEMAN, IOWA

This is the site of another huge grain elevator the likes of which dot the countryside in rural Iowa, the heart land of the nation. Alleman can easily accommodate other such buildings to suit rural storage of grain.

## AMES, IOWA

*'The Fastest Growing City in Iowa'*

The home of Iowa State College, Ames is located very near to the geographic center of the state on United States Highways 30 and 69. It is also the home of the Iowa State Highway Commission.

With an estimated population of 25,325, which includes students at the college, Ames boasts of all the advantages of a large city. Its fine business sections reported a business of \$22,335,131 in 1952, an increase of nearly a million dollars over 1951. Its three banks had a total of \$20,118,026.53 in resources, while its postal receipts were over \$355,000.

In addition to the college, Ames has fine public and parochial schools with a total enrollment of over 3,200. The college enrollment for the winter quarter of 1953 was over 7,500.

A city of fine homes, good parks, and wonderful recreational facilities, Ames also boasts of the finest of utility supplies to its citizens. Two railroads, a municipal airport, and the highways provide more than adequate transportation in and out of Ames in all directions.

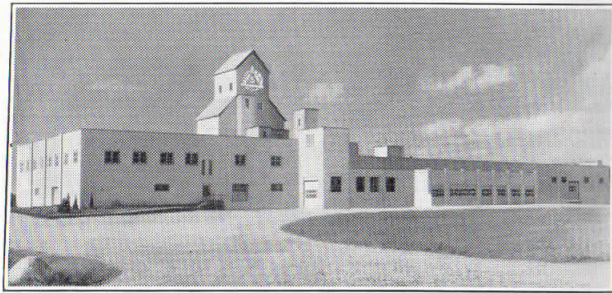
Several small industries also make Ames their home and many more industrial sites are available, all on trackage and with utilities close by.

## DES MOINES, IOWA

—{ Population: 233,000 }—

*'The Center of the World's Greatest Farm Market'*

Des Moines is the beautiful capital city of the State of Iowa and is located near the geographical center of the United States in the heart of the greatest food-producing area in the world. Nine railroads reach out of Des Moines in every direction while federal and state paved highways fan out in every direction from the state's capital. Commercial airline services both east and west and north and south run regular schedules from



*Sargent & Company, Processors of Feed, Des Moines, Iowa  
Served Exclusively by the Ft. D., D. M. & S. Ry.*

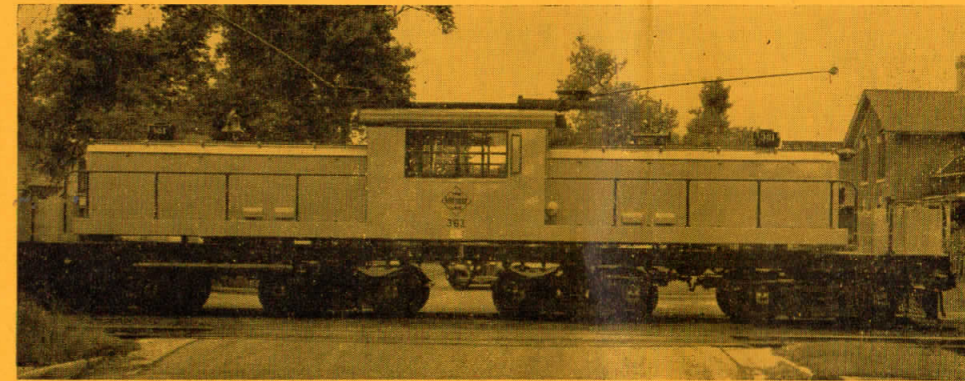
its municipal airport. Des Moines has a plentiful labor supply which flows in and out of the city when needed while it has the facilities and attractions of a metropolitan city yet is small enough to have the neighborly advantages of a small community. Schools from kindergarten to university, churches of all well-known denominations, road shows from Broadway, little theater, well-stocked library, art museum, and numerous parks are among the things that make Des Moines a delightful city in which to live.

Des Moines boasts of ample power at reasonable rates, natural gas available on a firm basis for small commercial and industrial users and on an interruptible basis for large-volume customers. Good sites for factories are available on one or several railroads. Large areas are located within the city limits or outside, with utilities, trackage, and highways.

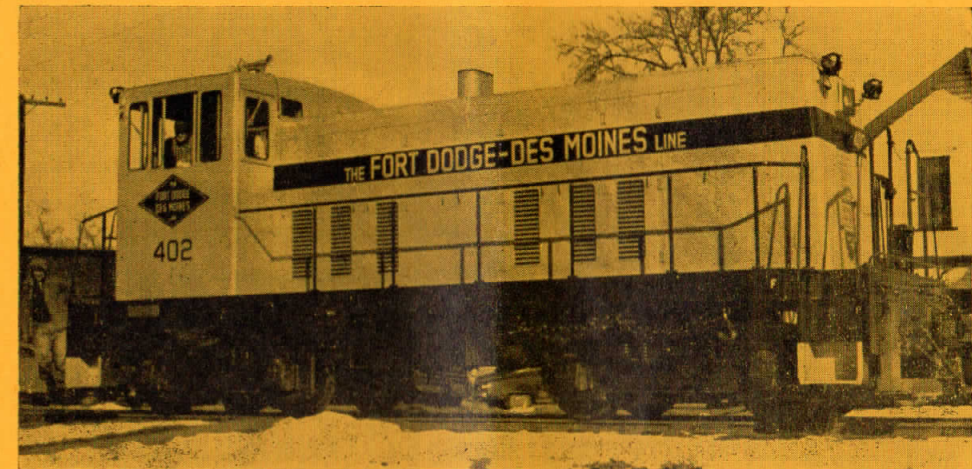
The Des Moines water works has a daily capacity of 100,000,000 gallons of good water.

Des Moines banks, with total resources in excess of \$300,000,000, are interested in manufacturing. They are staffed with men who know industry and know the financial needs of their customers. The tax rate in Des Moines is reasonable.

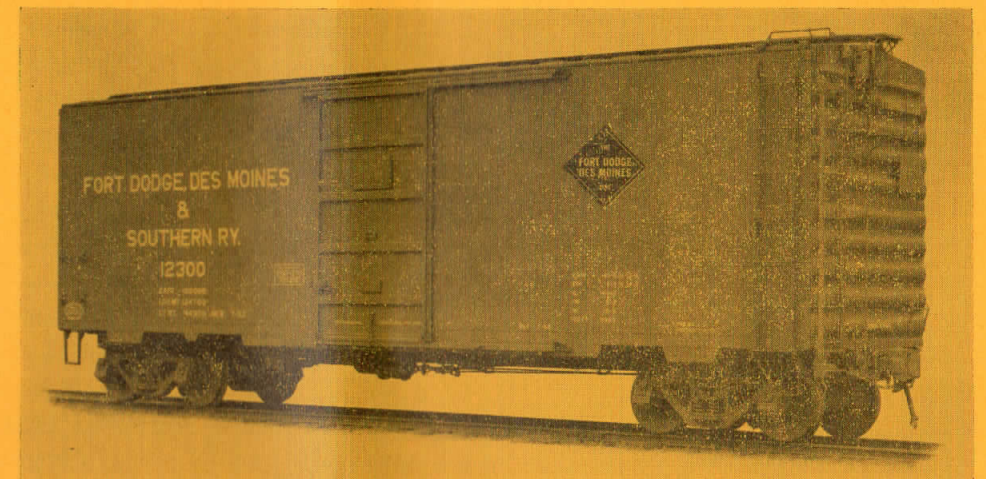
Industrially, Des Moines is having the biggest construction year in its history in 1955 and business remains at a high level. Firestone Tire & Rubber Company started a \$6,000,000 addition, Armstrong Rubber Company opened another \$2,500,000 addition, and Solar Aircraft is building an additional \$2,000,000 plant. Many other firms are expanding and several new ones have announced they will make Des Moines their headquarters or area headquarters. For the first nine months of 1953 Des Moines's bank debits were \$3,122,537,000; postal receipts \$5,955,620; building permits \$20,416,443, and total kilowatt-hours electric power consumption 237,021,872.



*Electric*



*Diesel*



*All-steel box cars*