

SEE-WAY thru the Rockies

The California Zephyr is the only streamliner to California with Five Vista-Domes . . . daily between Chicago, Denver, Salt Lake City, San Francisco.

Only the California Zephyr is designed and scheduled for sightseeing . . . hundreds of wonder-land miles through the Colorado Rockies . . . the entire length of California's spectacular Feather River Canyon . . . all during daylight hours.

All types of Pullman accommodations . . . three spacious Vista-Dome reclining chair coaches . . . Vista-Dome observation-lounge car . . . Vista-Dome snack-lounge car . . . dining car.

Include Southern California via San Francisco without additional rail fare.

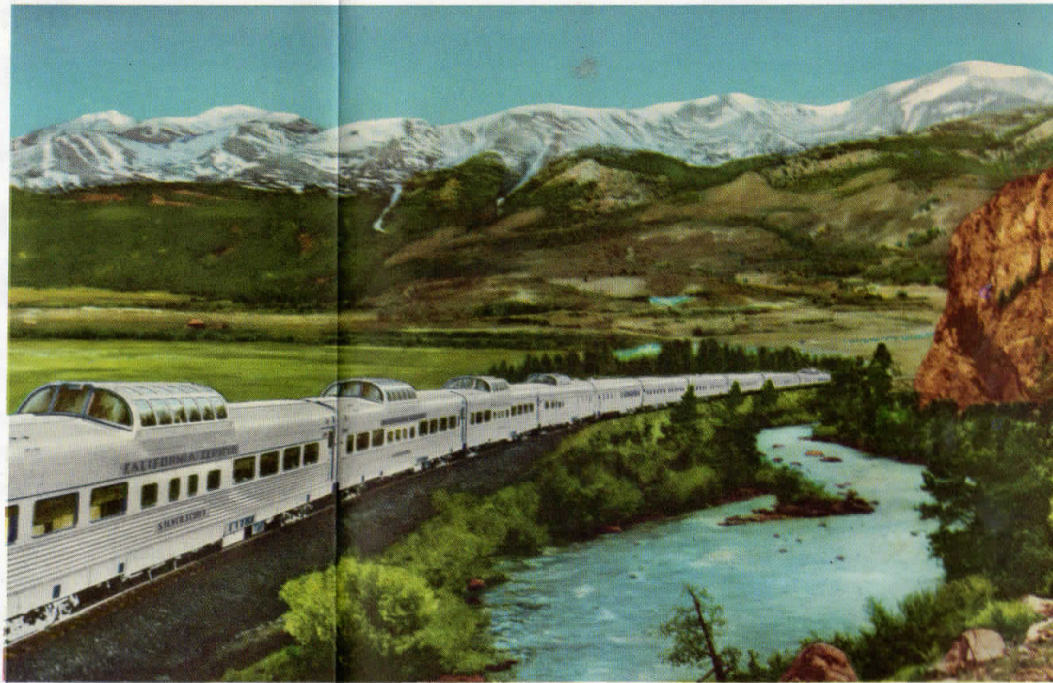
"Friendliest Train in the West!"

So say regular patrons about the Prospector, overnight, every night streamliner between Denver and Salt Lake City. It's an "American plan" home on wheels, too. One low price covers every necessity for economical travel between the Colorado and Utah capital cities . . .

rail fare, Pullman accommodation of your choice, or de luxe reclining chair car seat, breakfast and dinner going and returning, with meals selected from the regular Prospector menu . . . one transaction, one package, and a handy ticket jacket receipt for income tax record.

Compare fares . . . nowhere can you find a better travel bargain . . . comfortable reclining coach seat, dinner and breakfast, railroad fare from or to Denver or Salt Lake City . . . only \$20.26 plus the as-yet-not-repealed 10% federal transportation tax on railroad fare (\$1.63) . . . even greater savings for round-trip travel.

Next time try the Prospector . . . forever after you'll shun highway hazards and "hurry up and wait" transportation.



Printed in U.S.A.



ISSUED MAY 1, 1958

Rio Grande TIME TABLES

ROYAL GORGE ROUTE



Royal Gorge of the Arkansas River

DENVER & RIO GRANDE WESTERN RAILROAD

MAIN LINE THRU THE ROCKIES

ISSUED MAY 1, 1958

Rio Grande TIME TABLES

MOFFAT TUNNEL ROUTE



California Zephyr—Glenwood Canyon, Colorado River

DENVER & RIO GRANDE WESTERN RAILROAD

MAIN LINE THRU THE ROCKIES



THE DENVER AND RIO GRANDE WESTERN RAILROAD COMPANY
THE DIRECT CENTRAL TRANSCONTINENTAL ROUTE

Welcome, Rio Grande Traveler:

*"Out where the handclasp's a little stronger,
Out where the smile dwells a little longer,
That's where the West begins"*—

—ARTHUR CHAPMAN

As a Rio Grande passenger, you are out where the west begins. We're delighted to have you with us. We hope that when you detrain you'll carry away pleasant memories giving full meaning to the poet's words.

*"Out where the sun is a little brighter,
Where the snows that fall are a little whiter."*

—from Stanza 1

Your Rio Grande train is routed through western wonderlands and is scheduled to provide maximum see-ability.

Perhaps you are on the California Zephyr — only transcontinental train with five Vista-Dome cars. The C-Z is designed and scheduled for sightseeing on Rio Grande's Moffat Tunnel Route, the Colorado River scenic shortcut.

Or maybe you're on the Vista-Dome Royal Gorge. You will thrill to Royal Gorge itself, and you'll skirt the base of 14,431 ft. Mt. Elbert, second highest peak in the United States.

Either way, on either train, you'll gain new appreciation of and inspiration from the majestic Rocky Mountains.

*"And a man makes friends without half trying—
That's where the West begins."*

—from Stanza 3

It's our pleasure and privilege to undertake being good exponents of western hospitality. You are our honored guest and we hope you and we will become firm friends.

Cordially yours,

A. J. Eno

Passenger Traffic Manager

DENVER & RIO GRANDE WESTERN RAILROAD

TABLE OF CONTENTS

Condensed Through Schedules.....	Pages 4 and 5	Map.....	Pages 10 and 11
Connecting Lines' Schedules.....	Page 14	Station Index.....	Page 3
Fares—Rail and Pullman.....	Page 15	Train Schedules and Equipment.....	Pages 6, 7, 8, 9, and 12
General Information.....	Page 14	Traffic Department Representatives.....	Page 18
Lines Operated in Freight Service Only.....	Pages 12 and 13		

INDEX TO PRINCIPAL TRAIN SCHEDULES

THE CALIFORNIA ZEPHYR.....	Pages 4, 6 and 7	THE PROSPECTOR.....	Pages 5, 6 and 7
THE COLORADO EAGLE.....	Pages 5 and 8	THE ROYAL GORGE.....	Pages 5, 8 and 9
THE DENVER ZEPHYR.....	Page 5	THE YAMPA VALLEY MAIL.....	Pages 6 and 12
THE MOUNTAINEER.....	Page 6		

INDEX TO PRINCIPAL STATIONS

TABLE NO.	TABLE NO.	TABLE NO.	TABLE NO.	TABLE NO.	TABLE NO.
Acequia, Colo..... 2	Clear Creek, Utah..... 27	Fraser, Colo..... 1, 3	Kaysville, Utah..... 19	Monument, Colo..... 2	Radium, Colo..... 1, 3
Ah Wilderness, Colo..... 4	Clifton, Colo..... 1, 2	Fruita, Colo..... 1, 2	Kearns, Utah..... 28	Moroni, Utah..... 21	Ralston, Colo..... 1, 3
Alamosa, Colo..... 6, 8, 14, 16	Colona, Colo..... 9		Kebler No. 2, Colo..... 12	Mosca, Colo..... 14	Range, Colo..... 1
Allison, Colo..... 16	Colorado City, Colo..... 13		Kema, Utah..... 20	Mounds, Utah..... 1, 2, 26	Red Cliff, Colo..... 2
American Fork, Utah..... 1, 2	Colorado Springs, Colo..... 2, 13	Garfield, Colo..... 15	Kremmling, Colo..... 1, 3	Mt. Harris, Colo..... 3	Richfield, Utah..... 20
Antonito, Colo..... 16	Colton, Utah..... 1, 2, 27	Garfield, Utah..... 28	Kyune, Utah..... 1, 2	Mt. Pleasant, Utah..... 20	Ridgway, Colo..... 9
Arboles, Colo..... 16	Columbia Junction, Utah..... 26	Garfield Junction, Utah..... 28		Murray, Utah..... 1, 2	Rife, Colo..... 1, 2
Arvada, Colo..... 1, 3	Concrete, Colo..... 2	Garfield Smelter, Utah..... 28			Riverside, Colo..... 2
Aspen, Colo..... 5	Cotopaxi, Colo..... 2	Gato, Colo..... 16	Lacy, Colo..... 1, 2		Riverton, Utah..... 1, 2
Aurora, Utah..... 20	Craig, Colo..... 3	Geneva, Utah..... 1, 2	La Jara, Colo..... 16	Nash, Utah..... 1, 2	Rollinsville, Colo..... 1, 3
Austin, Colo..... 10	Creede, Colo..... 8	Gilluly, Utah..... 1, 2	La Larkspur, Colo..... 2	Nathrop, Colo..... 2	Romeo, Colo..... 16
Avon, Colo..... 2	Crescent, Colo..... 1, 3	Glen, Colo..... 1	Lascaz, Colo..... 6	New Castle, Colo..... 1, 2, 24	Roper, Utah..... 1, 2, 24
Axtell, Utah..... 20	Cumbres, Colo..... 16	Glenwood Springs, Colo..... 1, 2, 5	La Veta, Colo..... 6	Niche, Colo..... 1	Routt, Colo..... 3
Aztec, N. M..... 17		Gore, Colo..... 1, 3	Layton, Utah..... 19	North Salt Lake, Utah..... 19	Roy, Utah..... 19
		Goshen, Utah..... 22	Leadville, Colo..... 2, 7	Nunn's Utah..... 25	Royal Gorge, Colo..... 2
		Granby, Colo..... 1, 3	Lehi, Utah..... 1, 2		
Bacchus, Utah..... 28	DeBeque, Colo..... 1, 2	Grand Junction, Colo..... 1, 2, 4, 9	Leon, Colo..... 5	Oak Creek, Colo..... 3	Salida, Colo..... 2, 15
Banning, Utah..... 26	Dell, Colo..... 1	Grand Valley, Colo..... 1, 2	Leyden Jct., Colo..... 1, 3	Salina, Utah..... 20	Salina, Colo..... 20
Bear River, Colo..... 3	Delta, Colo..... 9, 10	Greenland, Colo..... 2	Littleton, Colo..... 2	Salt Lake City, Utah..... 1, 2, 19, 24	Salt Lake City, Utah..... 1, 2, 19, 24
Belden, Colo..... 2	Del Norte, Colo..... 8	Green River, Utah..... 1, 2	Loma, Colo..... 1, 2	Sands, Utah..... 28	Sands, Utah..... 28
Bingham, Utah..... 28	Denver, Colo..... 1, 2, 3	Gunnison, Utah..... 20	Louviers, Colo..... 2	Ogden, Utah..... 1, 2, 19	Sanctis Junction, Utah..... 28
Blanca, Colo..... 6	Dividend, Utah..... 22, 23	Gypsum, Colo..... 2	Ludlow, Colo..... 11	Olathe, Colo..... 9	Sandy, Colo..... 6
Bond, Colo..... 1	Dotsero, Colo..... 1, 2		Lumberton, N. M..... 18	Olivers, Utah..... 1, 2	Santaquin, Utah..... 22
Bondad, Colo..... 17	Dragerton, Utah..... 26		Lynn, Colo..... 11	Orestod..... 1, 3	Scofield, Utah..... 27
Bridgeport, Colo..... 9	Dulce, N. M..... 16	Hangin' Bridge, Colo..... 2		Osier, Colo..... 16	Sedalia, Colo..... 2
Brookston, Colo..... 3	Durango, Colo..... 4, 16, 17	Hayden, Colo..... 3	Mack, Colo..... 1, 2	Sevier, Utah..... 20	Sedalia, Colo..... 2
Brown Canon, Colo..... 2		Haybro, Colo..... 3	Malta, Colo..... 2, 7	Shoshone, Colo..... 1, 2	Sevier, Utah..... 20
Buena Vista, Colo..... 2		Heber, Utah..... 25	Manti, Utah..... 20, 21	Sidney, Utah..... 3	Shoshone, Colo..... 1, 2
Burnham, Colo..... 2	Eagle, Colo..... 2	Helper, Utah..... 1, 2	Marnel, Colo..... 6	Sigurd, Utah..... 20	Sidney, Utah..... 3
Burns, Colo..... 1	East Portal, Colo..... 1, 3	Henkel, Colo..... 2	Marysville, Utah..... 20	Silt, Colo..... 1, 2	Silt, Colo..... 1, 2
Buttes, Colo..... 2	Egeria, Colo..... 3	Hill Top, Utah..... 20	Mayne, Colo..... 11	Silverton, Colo..... 4	Silverton, Colo..... 4
	Elkinsdale, Colo..... 1, 3	Hobson, Colo..... 2	Maysville, Colo..... 15	Smoot, Utah..... 25	Smoot, Utah..... 25
	Elsinore, Utah..... 20	Hooper, Colo..... 14	McCoy, Colo..... 3	Soldier Summit, Utah..... 1, 2	Soldier Summit, Utah..... 1, 2
Cameo, Colo..... 1, 2	Emma, Colo..... 5	Hotchkiss, Colo..... 10	Mesa Verde Natl. Park..... 4	Somerset, Colo..... 10	Somerset, Colo..... 10
Canon City, Colo..... 2	Englewood, Colo..... 2	Howard, Colo..... 2	Midvale, Utah..... 1, 2, 28	Spanish Fork, Utah..... 22	Spanish Fork, Utah..... 22
Carbondale, Colo..... 5	Eureka, Utah..... 22	Husted, Colo..... 2	Milburn, Utah..... 20	Spring City, Utah..... 20	Spring City, Utah..... 20
Caryhurst, Utah..... 25			Milner, Colo..... 3	Springville, Utah..... 1, 2, 22	Springville, Utah..... 1, 2, 22
Cary Ranch, Colo..... 3			Minnequa, Colo..... 6	State Bridge, Colo..... 1, 3	State Bridge, Colo..... 1, 3
Castilla, Utah..... 1, 2			Minturn, Colo..... 2	Steamboat Springs, Colo..... 3	Steamboat Springs, Colo..... 3
Castle Gate, Utah..... 1, 2			Monarch, Colo..... 15	Sterling, Utah..... 20	Sterling, Utah..... 20
Castle Rock, Colo..... 2			Monarch, Colo..... 15	Sublette, N. M..... 16	Sublette, N. M..... 16
Cattle Creek, Colo..... 5	Fairview, Utah..... 20	Ignacio, Colo..... 16	Moner, N. M..... 16	Sugar House, Utah..... 24	Sugar House, Utah..... 24
Cedar Hill, N. M..... 17	Farmington, N. M..... 17	Indianola, Utah..... 20	Monson, Colo..... 11	Sunnyside, Utah..... 26	Sunnyside, Utah..... 26
Cedarwood, Colo..... 6	Farmington, Utah..... 19	Iron King, Utah..... 23	Monte Vista, Colo..... 8	Swallows, Colo..... 2	Swallows, Colo..... 2
Cement Quarry, Utah..... 24	Flora, Utah..... 23		Montrose, Colo..... 9	Sylvan, Colo..... 1	Sylvan, Colo..... 1
Chama, N. M..... 16	Flora Vista, N. M..... 17			Yale, Colo..... 2	Yale, Colo..... 2
Charleston, Utah..... 25	Florence, Colo..... 2			Yampa, Colo..... 3	Yampa, Colo..... 3
Cisco, Utah..... 1, 2	Fort Garland, Colo..... 6	Joseph, Utah..... 20			
Clearfield, Utah..... 19	Fountain, Colo..... 2				

If you would like to receive future issues of this time table, please mail request to

H. F. ENO, Passenger Traffic Manager
DENVER & RIO GRANDE WESTERN RAILROAD
Room 100 Rio Grande Building, 1531 Stout Street, Denver 17, Colo.

ROUTE OF THE Vista-Dome

CALIFORNIA ZEPHYR

BETWEEN

CHICAGO • DENVER • SALT LAKE CITY • SAN FRANCISCO

READ DOWN See Page 7 for Equipment READ UP

Table with columns: No. 17 Daily, Miles From Chicago, STATIONS, Elevation, No. 18 Daily. Lists stations from Burlington Route to San Francisco, Calif.

Stops on flag to receive revenue passengers for Salt Lake City or beyond, and discharge revenue passengers from Denver or beyond.

All space on the California Zephyr—both coach and Pullman—is reserved and specifically assigned in advance.



VIEW FROM A VISTA-DOME!

Summer or winter, spring or fall, the best way to see the spectacular scenery of the Colorado Rockies is from the place where you can see the most—a Rio Grande Vista-Dome See-Liner!

Framed in the glare-resistant windows of your train-top penthouse-on-wheels are the soaring peaks of the Continental Divide, the lush evergreen forests of the Colorado high country, and all the remote and fascinating beauty of this magic wonderland.

Passengers on the California Zephyr meet their sister train every day on Rio Grande's main line scenic highway, as eastbound and westbound streamliners pass near the midpoint of their transcontinental journeys.

Timetable for California Zephyr showing months from May 1958 to April 1959 with S.M.T.W.T.F.S. indicators.

ROUTE OF THE Vista-Dome

ROYAL GORGE

BETWEEN

DENVER • COLORADO SPRINGS • PUEBLO GLENWOOD SPRINGS • GRAND JUNCTION PROVO • SALT LAKE CITY

READ DOWN See Page 9 for Equipment READ UP

Table with columns: No. 1 Daily, Miles from Denver, Mountain Standard Time, Elevation, No. 2 Daily. Lists stations from Denver to Salt Lake City.



ROUTE OF THE NEW Vista-Dome

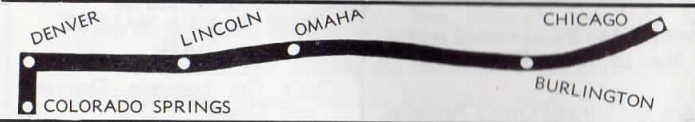
DENVER ZEPHYR

BETWEEN

Colorado Springs • Denver • Omaha • Chicago

READ DOWN See Page 9 for Equipment READ UP

Table with columns: No. 2 Daily, Miles from Colo. Spgs., Denver & Rio Grande Western Railroad, Elevation, No. 1 Daily. Lists stations from Colorado Springs to Chicago.



ROUTE OF THE Vista-Dome

COLORADO EAGLE

BETWEEN

DENVER • COLORADO SPRINGS • PUEBLO WICHITA • KANSAS CITY • ST. LOUIS

READ DOWN See Page 9 for Equipment READ UP

Table with columns: No. 3 Daily, Miles from Denver, Denver & Rio Grande Western Railroad, Elevation, No. 4 Daily. Lists stations from Denver to St. Louis.

MST Mountain Standard Time. CST Central Standard Time.

ROUTE OF THE

PROSPECTOR

BETWEEN

Denver • Glenwood Springs • Grand Junction Provo • Salt Lake City

READ DOWN See Page 6 for Equipment READ UP

Table with columns: No. 7 Daily, Miles from Denver, Mountain Standard Time, Elevation, No. 8 Daily. Lists stations from Denver to Salt Lake City.



Table 1		MOFFAT TUNNEL ROUTE										Table 1			
DENVER • BOND • GLENWOOD SPRINGS • GRAND JUNCTION		GRAND JUNCTION • PRICE • PROVO • SALT LAKE CITY • OGDEN													
READ DOWN					Issued May 1, 1958					READ UP					
No. 19 The Mountaineer	No. 7 The Prospector	No. 9 Yampa Valley Mail	No. 17 California Zephyr	Miles from Denver	STATIONS	Eleva- tion	No. 18 California Zephyr	No. 10 Yampa Valley Mail	No. 8 The Prospector	No. 20 The Mountaineer	No. 22 The Mountaineer	REFERENCE NOTES			
					Mountain Standard Time										
* 8 30 PM	* 5 55 PM	* 9 05 AM	* 8 40 AM	.0	Lv DENVER, COLO.	5280	* 7 00 PM	* 3 20 PM	* 8 00 AM	^ 7 00 AM	\$ 11 00 PM	* Daily.			
.s.		f 9 17 "		7.1	Lv Arvada (Ralston)	5278		f 2 56 "		t.	t.	† Daily except Sunday.			
.s.		f 9 44 AM	See Note "A"	12.4	Lv Leyden Jct.	5617	See Note "A"	f 2 22 PM		t.	t.	‡ Daily except Monday.			
.s.		10 16 AM		24.4	Lv Plainview	6782		1 50 PM		t.	t.	§ Sunday only.			
.s.		10 25 "		31.3	Lv Crescent	7441		1 42 "		t.	t.	¶ Flag stop.			
.s.		f 10 33 "		37.0	Lv Pine Cliff	7966		f 1 33 "		t.	t.	† U. S. Mail Box located on station platform.			
.s.		10 41 "		41.7	Lv Rollinsville	8367		1 28 "		t.	t.	c Stops on flag to receive revenue passengers for Salt Lake City or beyond, and discharge revenue passengers from Denver or beyond.			
.s.		10 52 AM	Streamlined Diesel-Power	46.8	Lv Tolland	8886		1 16 PM	f 5 59 AM	t.	8 48 PM	d Stops on flag to receive revenue passengers for Denver or beyond, and discharge revenue passengers from Salt Lake City or beyond.			
.s.		11 04 "		50.0	Ar East Portal	9195	Streamlined Diesel-Power	f 1 00 "		t.	t.	e Stops on flag to receive revenue passengers for Denver, Colorado Springs, Pueblo or beyond.			
.s.		f 11 08 "		56.8	Lv Winter Park	9058		f 12 54 "		t.	t.	f Stops on flag to receive revenue passengers for Denver, Colorado Springs, Pueblo or beyond.			
.s.		f 11 12 "		62.1	Lv Fraser	8561		12 44 "	f 5 29 AM	3 48 AM	f 8 18 PM	g Stops on flag to receive revenue passengers for Denver, Colorado Springs, Pueblo or beyond.			
.s.		11 30 "		65.9	Lv Tabernash	8318		12 28 "		t.	t.	h Stops on flag to receive revenue passengers for Denver, Colorado Springs, Pueblo or beyond.			
.s.		11 45 "		70.2	Lv Elkdale	8156				t.	t.	i Stops on flag to receive revenue passengers for Denver, Colorado Springs, Pueblo or beyond.			
10 56 PM	f 8 16 PM	11 30 "		75.7	Ar Granby	7937				t.	t.	j Stops on flag to receive revenue passengers for Denver, Colorado Springs, Pueblo or beyond.			
.s.		11 45 "		86.1	Ar Hot Sulphur Springs (Byers Canyon)	7662				t.	t.	k Stops on flag to receive revenue passengers for Denver, Colorado Springs, Pueblo or beyond.			
.s.		11 55 AM		91.0	Lv Parshall	7589		12 08 PM		t.	t.	l Stops on flag to receive revenue passengers for Denver, Colorado Springs, Pueblo or beyond.			
11 39 PM	8 53 PM	12 14 PM		103.2	Ar Kremmling (Gore Canyon)	7322		12 02 "	4 53 AM		7 43 PM	m Stops on flag to receive revenue passengers for Denver, Colorado Springs, Pueblo or beyond.			
.s.		12 40 PM		105.8	Lv Gore	7322				t.	t.	n Stops on flag to receive revenue passengers for Denver, Colorado Springs, Pueblo or beyond.			
.s.		f 12 58 "		116.1	Lv Radium	6881				t.	t.	o Stops on flag to receive revenue passengers for Denver, Colorado Springs, Pueblo or beyond.			
.s.		1 05 "	12 28 PM	126.1	Lv State Bridge	6728		11 33 AM		t.	t.	p Stops on flag to receive revenue passengers for Denver, Colorado Springs, Pueblo or beyond.			
12 40 AM	9 52 PM	1 05 "	12 31 "	129.3	Ar BOND (Orestod)	6692	3 14 PM	11 10 "	4 00 AM	2 05 AM	6 50 PM	q Stops on flag to receive revenue passengers for Denver, Colorado Springs, Pueblo or beyond.			
12 50 "	9 57 "			129.3	Lv BOND (Orestod)	6692	3 11 "		3 55 "	1 50 "	6 40 PM	r Stops on flag to receive revenue passengers for Denver, Colorado Springs, Pueblo or beyond.			
f 1 00 "		See Table 3 Page 12 for Schedule of Train No. 9 Orestod to Craig	2 00 PM	134.9	Ar Glen	6609		See Table 3 Page 12 for Schedule of Train No. 10 Craig to Orestod	f 1 22 "	f 6 30 PM	f 6 30 PM	s Stops on flag to receive revenue passengers for Denver, Colorado Springs, Pueblo or beyond.			
f 1 12 "				142.1	Ar Dell	6503			f 1 12 "	f 6 20 PM	f 6 20 PM	t Stops on flag to receive revenue passengers for Denver, Colorado Springs, Pueblo or beyond.			
f 1 17 "				144.6	Ar Burns	6481			f 1 05 "	f 6 15 PM	f 6 15 PM	u Stops on flag to receive revenue passengers for Denver, Colorado Springs, Pueblo or beyond.			
f 1 28 "				148.8	Ar Sylvan	6431			f 12 56 "	f 6 09 PM	f 6 09 PM	v Stops on flag to receive revenue passengers for Denver, Colorado Springs, Pueblo or beyond.			
f 1 37 "				155.3	Ar Range	6328			f 12 47 "	f 6 00 PM	f 6 00 PM	w Stops on flag to receive revenue passengers for Denver, Colorado Springs, Pueblo or beyond.			
f 1 40 "				157.7	Ar Sweetwater	6296			f 12 44 "	f 5 57 PM	f 5 57 PM	x Stops on flag to receive revenue passengers for Denver, Colorado Springs, Pueblo or beyond.			
f 1 48 "				163.2	Ar Niche	6198			f 12 37 "	f 5 50 PM	f 5 50 PM	y Stops on flag to receive revenue passengers for Denver, Colorado Springs, Pueblo or beyond.			
f 1 56 "				166.8	Ar DOTSERO	6156			f 12 30 "	f 5 45 PM	f 5 45 PM	z Stops on flag to receive revenue passengers for Denver, Colorado Springs, Pueblo or beyond.			
f 2 12 "				175.4	Ar Shoshone (Glenwood Canyon)	6119			f 12 15 "	f 5 30 PM	f 5 30 PM	aa Stops on flag to receive revenue passengers for Denver, Colorado Springs, Pueblo or beyond.			
.s.				185.0	Lv Glenwood Springs	5869	1 40 PM			2 27 AM	11 55 PM	ab Stops on flag to receive revenue passengers for Denver, Colorado Springs, Pueblo or beyond.			
.s.				197.6	Ar New Castle	5758					11 20 "	ac Stops on flag to receive revenue passengers for Denver, Colorado Springs, Pueblo or beyond.			
.s.				204.4	Ar Silt	5562					11 08 "	ad Stops on flag to receive revenue passengers for Denver, Colorado Springs, Pueblo or beyond.			
.s.				211.5	Ar Rifle	5441					10 55 "	ae Stops on flag to receive revenue passengers for Denver, Colorado Springs, Pueblo or beyond.			
.s.				216.3	Ar Lacy	5310					10 55 "	af Stops on flag to receive revenue passengers for Denver, Colorado Springs, Pueblo or beyond.			
.s.				228.9	Ar Grand Valley	5239					10 24 PM	ag Stops on flag to receive revenue passengers for Denver, Colorado Springs, Pueblo or beyond.			
.s.				233.7	Ar Una	5104					10 01 PM	ah Stops on flag to receive revenue passengers for Denver, Colorado Springs, Pueblo or beyond.			
.s.				241.5	Ar DeBeque	5025					9 32 "	ai Stops on flag to receive revenue passengers for Denver, Colorado Springs, Pueblo or beyond.			
.s.				257.5	Ar Cameo	4945					9 25 "	aj Stops on flag to receive revenue passengers for Denver, Colorado Springs, Pueblo or beyond.			
.s.				261.9	Ar Palisade	4774					9 25 "	ak Stops on flag to receive revenue passengers for Denver, Colorado Springs, Pueblo or beyond.			
.s.				267.4	Ar Clifton	4741					9 10 "	al Stops on flag to receive revenue passengers for Denver, Colorado Springs, Pueblo or beyond.			
* 5 30 "	* 1 03 AM	* 3 40 PM		274.5	Ar Grand Junction	4721	* 11 58 AM		* 12 40 AM	† 9 00 "	§ 2 30 PM	am Stops on flag to receive revenue passengers for Denver, Colorado Springs, Pueblo or beyond.			

Table 1		MOFFAT TUNNEL ROUTE										Table 1			
DENVER • BOND • GLENWOOD SPRINGS • GRAND JUNCTION		GRAND JUNCTION • PRICE • PROVO • SALT LAKE CITY • OGDEN													
READ DOWN					Issued May 1, 1958					READ UP					
No. 7-1 The Prospector	No. 17 California Zephyr	Miles from Denver	STATIONS	Eleva- tion	No. 18 California Zephyr	No. 8-2 The Prospector	REFERENCE NOTES								
					Mountain Standard Time										
* 1 20 AM	* 3 50 PM	274.5	Lv GRAND JUNCTION, COLO.	4583	* 11 51 AM	* 12 20 AM	* Daily.								
.x.		285.4	Ar Fruita	4510			† Daily except Sunday.								
.x.		290.5	Ar Loma	4530	See Note "A"		‡ Daily except Monday.								
.x.		293.8	Ar Mack, Colo.	4540			§ Sunday only.								
.x.	See Note "A"		(Ruby Canyon) (Colorado-Utah State Line)				¶ Flag stop.								
.x.		313.3	Ar Westwater, Utah	4316			† U. S. Mail Box located on station platform.								
.x.		329.3	Ar Cisco	4347			c Stops on flag to receive revenue passengers for Salt Lake City or beyond, and discharge revenue passengers from Denver or beyond.								
2 54 AM	c 5 15 PM	353.0	Ar Thompson	5133	d 10 28 AM	10 45 PM	d Stops on flag to receive revenue passengers for Denver or beyond, and discharge revenue passengers from Salt Lake City or beyond.								
3 24 "		380.1	Ar Green River	4075		f 10 11 "	e Stops on flag to receive revenue passengers for Denver, Colorado Springs, Pueblo or beyond.								
.x.	Streamlined Steel	406.3	Ar Woodside	4634			f Stops on flag to receive revenue passengers for Denver, Colorado Springs, Pueblo or beyond.								
.x.		428.1	Ar Mounds	5437			g Stops on flag to receive revenue passengers for Denver, Colorado Springs, Pueblo or beyond.								
.x.		437.9	Ar Wellington	5389			h Stops on flag to receive revenue passengers for Denver, Colorado Springs, Pueblo or beyond.								
4 55 AM		444.0	Lv PRICE	5541		8 55 PM	i Stops on flag to receive revenue passengers for Denver, Colorado Springs, Pueblo or beyond.								
5 10 "	7 05 PM	451.4	Ar Helper	5830	8 46 AM	8 40 "	j Stops on flag to receive revenue passengers for Denver, Colorado Springs, Pueblo or beyond.								
.x.		453.7	Ar Utah Railway Junction	5996			k Stops on flag to receive revenue passengers for Denver, Colorado Springs, Pueblo or beyond.								
.x.		455.2	Ar Castle Gate	6105			l Stops on flag to receive revenue passengers for Denver, Colorado Springs, Pueblo or beyond.								
.x.		464.2	Ar Kyune	7022			m Stops on flag to receive revenue passengers for Denver, Colorado Springs, Pueblo or beyond.								
f 6 02 AM		469.4	Ar Colton	7170		f 7 47 PM	n Stops on flag to receive revenue passengers for Denver, Colorado Springs, Pueblo or beyond.								
.x.		476.3	Ar Soldier Summit (Wasatch Range)	7440			o Stops on flag to receive revenue passengers for Denver, Colorado Springs, Pueblo or beyond.								
.x.		485.9	Ar Gilluly	6529			p Stops on flag to receive revenue passengers for Denver, Colorado Springs, Pueblo or beyond.								
.x.		505.8	Lv Thistle	5033		6 55 PM	q Stops on flag to receive revenue passengers for Denver, Colorado Springs, Pueblo or beyond.								
f 7 15 AM		509.5	Ar Castilla	4912			r Stops on flag to receive revenue passengers for Denver, Colorado Springs, Pueblo or beyond.								
7 28 "	9 05 PM	520.7	Lv Springville	4555		f 6 34 PM	s Stops on flag to receive revenue passengers for Denver, Colorado Springs, Pueblo or beyond.								
.x.		526.1	Lv PROVO	4517	6 50 AM	6 27 "	t Stops on flag to receive revenue passengers for Denver, Colorado Springs, Pueblo or beyond.								
.x.		532.1	Lv Geneva	4543			u Stops on flag to receive revenue passengers for Denver, Colorado Springs, Pueblo or beyond.								
.x.		538.6	Lv American Fork	4563			v Stops on flag to receive revenue passengers for Denver, Colorado Springs, Pueblo or beyond.								
.x.		541.9	Lv Lehi	4550			w Stops on flag to receive revenue passengers for Denver, Colorado Springs, Pueblo or beyond.								
.x.		548.3	Lv Nash	4475			x Stops on flag to receive revenue passengers for Denver, Colorado Springs, Pueblo or beyond.								
.x.		551.0	Lv Olivers	4453			aa Stops on flag to receive revenue passengers for Denver, Colorado Springs, Pueblo or beyond.								
.x.		554.1	Lv Riverton	4408			ab Stops on flag to receive revenue passengers for Denver, Colorado Springs, Pueblo or beyond.								
.x.		559.4	Lv Midvale	4365			ac Stops on flag to receive revenue passengers for Denver, Colorado Springs, Pueblo or beyond.								
.x.		563.3	Ar Murray	4289			ad Stops on flag to receive revenue passengers for Denver, Colorado Springs, Pueblo or beyond.								
.x.		567.4	Ar Roper	4230			ae Stops on flag to receive revenue passengers for Denver, Colorado Springs, Pueblo or beyond.								
8 30 AM	10 00 PM	570.0	Ar SALT LAKE CITY, UTAH	4233		6 00 AM	af Stops on flag to receive revenue passengers for Denver, Colorado Springs, Pueblo or beyond.								
		606.9	OGDEN, UTAH (See Note B)	4293		5 30 PM	ag Stops on flag to receive revenue passengers for Denver, Colorado Springs, Pueblo or beyond.								

NOTE A: All space on the California Zephyr—both Coach and Pullman—is reserved and specifically assigned in advance.
NOTE B: D&RGW passenger trains originate and terminate at Salt Lake City. Tickets reading via D&RGW between Salt Lake City and Ogden will be honored on Union Pacific trains. See page 14 for schedules.

EQUIPMENT

(All equipment is air conditioned)
Nos. 17 and 18—THE CALIFORNIA ZEPHYR
(Stainless Steel, Streamlined, Diesel-Power)

- Vista Dome, Observation Lounge—Standard Sleeper between Chicago and San Francisco (CZ-10) 1 Drawing-room, 3 Dbl. Bedrooms, via C. B. & Q.-D. & R. G. W.-W. P.
- Standard Sleeper between Chicago and San Francisco (CZ-11) 6 Dbl. Bedrooms, 10 Roomettes, via C. B. & Q.-D. & R. G. W.-W. P.
- Standard Sleeper between Chicago and San Francisco (CZ-12) 16 Sections, via C. B. & Q.-D. & R. G. W.-W. P.
- Standard Sleepers between Chicago and San Francisco (CZ-14 and CZ-15) (2 cars) 6 Dbl. Bedrooms, 10 Roomettes, via C. B. & Q.-D. & R. G. W.-W. P.
- Standard Sleeper between Chicago and San Francisco (CZ-16) 6 Dbl. Bedrooms, 5 Compartments, via C.B.&Q., D.&R.G.W., W.P.
- Vista Dome Chair Cars between Chicago and San Francisco (CZ-20, CZ-21 and CZ-22) (3 cars) via C. B. & Q.-D. & R. G. W.-W. P.
- Vista Dome Buffet Lounge between Chicago and San Francisco via C. B. & Q.-D. & R. G. W.-W. P. (Lounge for all passengers: Vista Dome for sleeping car passengers) (Buffet and sandwich service 6:00 A. M. to 10:00 P. M.)
- Diner between Chicago and San Francisco, via C. B. & Q.-D. & R. G. W.-W. P.



Table 2 ROYAL GORGE ROUTE DENVER • COLORADO SPRINGS • PUEBLO • CANON CITY • SALIDA • GLENWOOD SPRINGS

Table with columns for No. 3, No. 1, No. 2, and No. 4, including station names, miles, and times. Includes 'Streamlined' and 'Diesel-Power' labels.

JUST SAY — "CHARGE IT"

Rio Grande travelers can enjoy charge account convenience for their transportation needs by obtaining a Rail Travel Credit Card.

For application forms apply to H. F. Eno, Passenger Traffic Manager, Rio Grande Building, Denver, Colo.

See Page 5 for Condensed Schedule of The Colorado Eagle, St. Louis to Pueblo

Taxi Service Available on Call Between Malta and Leadville, Distance 4 Miles

See Page 9 for explanation of references



FREE BAGGAGE ALLOWANCE When you travel by rail, no need to wrestle with heavy bags. Just check them through and they'll ride in the baggage car.

Table 2 ROYAL GORGE ROUTE GLENWOOD SPRINGS • GRAND JUNCTION • PROVO • SALT LAKE CITY • OGDEN

Table with columns for No. 1, No. 2, and No. 7-1, including station names, miles, and times. Includes 'Streamlined' and 'Diesel-Power' labels.

REFERENCE NOTES * Daily a Stops on flag to receive pay passengers for points on Mo. Pac. and discharge pay passengers from connections at Denver.

EQUIPMENT (All equipment is air-conditioned)

Nos. 1 and 2—THE ROYAL GORGE (Diesel Power) Grill-Lounge between Denver and Grand Junction. (Diner-Lounge during summer season)

Denver Zephyr Connection Standard Sleeper between Colorado Springs and Chicago (DZ-4) 10 Roomettes, 6 Double Bedrooms.

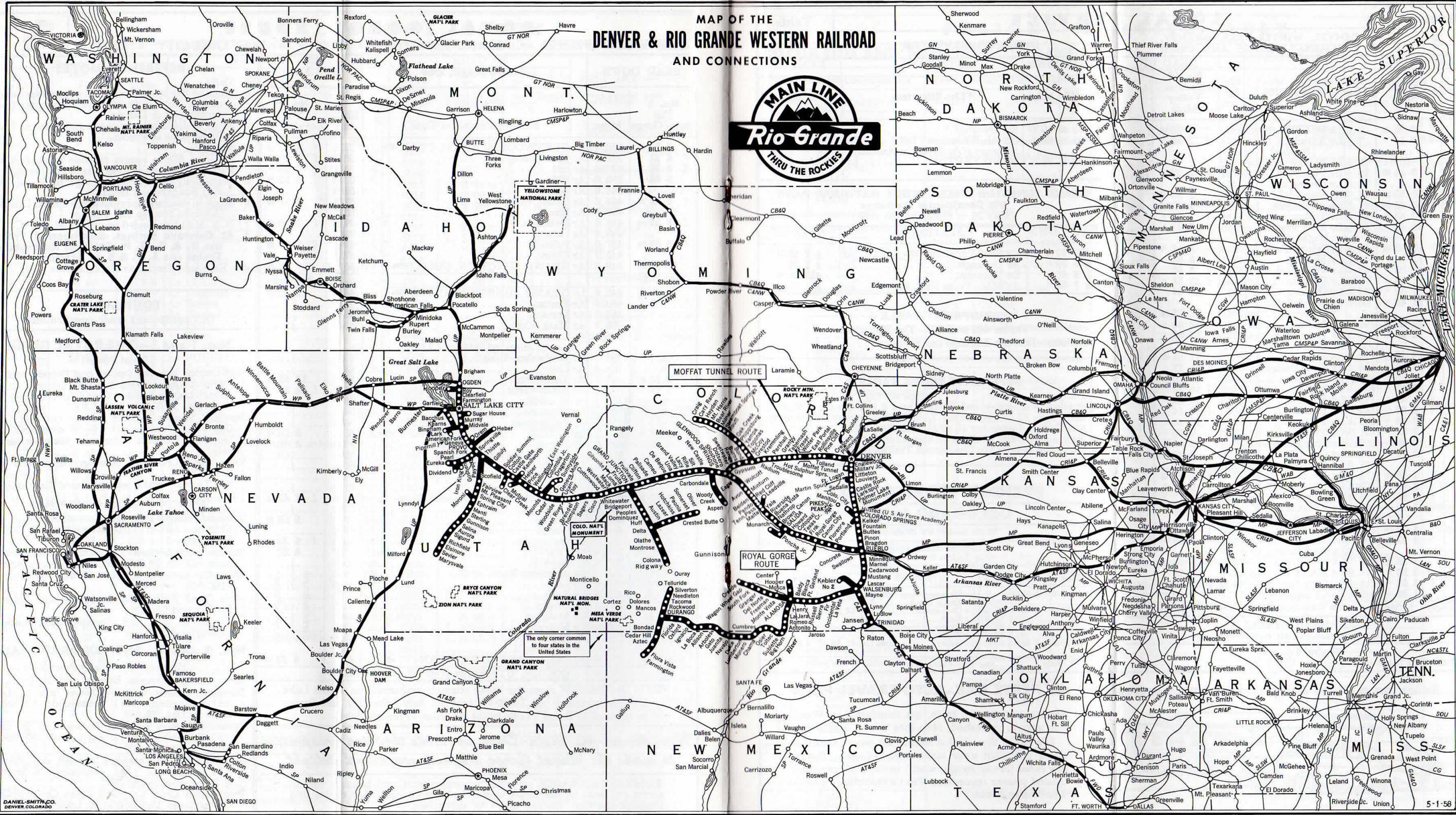
Nos. 3 and 4—THE COLORADO EAGLE (Streamlined—Diesel Power) Diner-Lounge between Denver and St. Louis. Standard Sleeper between Denver and St. Louis (31 eastbound) (111 westbound) 10 Roomettes, 6 Dbl. BR.

NOTE B: D&RGW passenger trains originate and terminate at Salt Lake City. Tickets reading via D&RGW between Salt Lake City and Ogden will be honored on Union Pacific trains. See page 14 for schedules.

Now, the see-all Vista-Dome car adds thrilling perspective to make the Royal Gorge a brand new travel delight.

BAGGAGE INSURANCE covering personal effects and baggage for an entire trip, may be purchased at principal Rio Grande ticket offices and baggage counters. Consult agent for particulars.

MAP OF THE DENVER & RIO GRANDE WESTERN RAILROAD AND CONNECTIONS



MOFFAT TUNNEL ROUTE

ROYAL GORGE ROUTE

The only corner common to four states in the United States

Table 3		LOCAL SERVICE				Table 4	
DENVER, WINTER PARK, GRANBY, STEAMBOAT SPRINGS AND CRAIG		DURANGO-SILVERTON					
READ DOWN		STATIONS		READ UP		STATIONS	
No. 9 Yampa Valley Mail	Miles			No. 10 Yampa Valley Mail		No. 461	No. 462
* 9 05 AM	0.0	Lv DENVER	Ar 5280	* 3 20 PM		9 15 AM	0.0
f 9 17 "	7.1	Lv Arvada (Ralston)	Lv 5278	f 2 56 "		11 05 "	26.5
	12.4	Lv Leyden Jct.	Lv 5652			12 40 PM	45.2
f 9 44 AM	24.4	Lv Plainview	Lv 6782	f 2 22 PM			
	31.3	Lv Crescent	Lv 7441				
10 16 AM	37.0	Lv Pine Cliff	Lv 7966	1 50 PM			
10 25 "	41.7	Lv Rollinsville	Lv 8367	f 1 42 "			
f 10 33 "	46.8	Lv Tolland	Lv 8886	f 1 33 "			
10 41 "	50.0	Lv East Portal	Lv 9195	1 28 "			
	56.8	Lv Winter Park	Lv 9058	1 16 PM			
11 04 "	62.1	Lv Fraser	Lv 8561	1 05 "			
f 11 08 "	65.9	Lv Tabernash	Lv 8318	f 1 00 "			
f 11 12 "	70.2	Lv Elkdale	Lv 8156	f 12 54 "			
11 30 "	75.7	Lv Granby	Lv 7937	12 44 "			
11 45 "	86.1	Lv Hot Sulphur Springs	Lv 7662	12 28 PM			
11 55 AM	91.0	Lv Parshall	Lv 7589	12 08 "			
12 14 PM	103.2	Lv Kremmling	Lv 7322	12 02 "			
	105.8	Lv Gore	Lv 7322				
12 40 PM	116.1	Lv Radium	Lv 6881	11 33 AM			
f 12 58 "	126.1	Lv State Bridge	Lv 6728	f 11 12 "			
f 1 05 "	128.5	Ar Orestod	Lv 6699	f 11 10 "			
f 1 19 "	134.1	Lv McCoy	Lv 7228	f 10 55 "			
f 1 41 "	142.5	Lv Volcano	Lv 7826	f 10 33 "			
f 2 00 "	149.9	Lv Egeria	Lv 8123	f 10 14 "			
2 05 "	153.1	Lv Toponas	Lv 8264	10 10 "			
2 18 "	161.6	Lv Yampa	Lv 7882	9 58 "			
2 28 "	167.7	Lv Phippsburg	Lv 7413	9 48 "			
2 35 "	171.2	Lv Oak Creek	Lv 7397	9 40 "			
	171.8	Lv Oak Hills	Lv 7372				
f 2 39 PM	173.6	Lv Routt	Lv 7279	f 9 34 AM			
f 2 42 "	175.0	Lv Haybro	Lv 7169	f 9 31 "			
f 2 56 "	183.6	Lv Sidney	Lv 6823	f 9 17 "			
3 13 "	190.9	Lv STEAMBOAT SPRINGS	Lv 6682	9 08 "			
f 3 22 PM	197.5	Lv Brookston	Lv 6529	f 8 54 AM			
3 27 "	200.9	Lv Milner	Lv 6480	8 49 "			
	206.3	Lv Bear River	Lv 6425				
3 38 PM	207.7	Lv Mt. Harris	Lv 6413	8 38 AM			
3 50 "	214.8	Lv HAYDEN	Lv 6328	8 28 "			
f 3 56 "	219.2	Lv Cary Ranch	Lv 6278	f 8 20 "			
4 20 "	231.4	Ar CRAIG	Lv 6174	* 8 05 "			

* Daily. f Flag stop. Rail-Auto Service available at this point.

EQUIPMENT—TABLE 3
(All equipment is air conditioned.)

Trains 9 and 10
Chair Car between Denver and Craig.

Relax on a train! Enjoy a new car on arrival. Try the HERTZ RAIL-AUTO TRAVEL PLAN



Stretch out on the train, get comfortable. When you arrive, refreshed, step into a new Hertz car.

It's easy. Your ticket seller will reserve the car when you buy your ticket. No charge. Hertz' low rates (lower by the week) include all gasoline, oil and proper insurance. That's traveling! That's The Hertz Idea!

Table 6—PUEBLO-ALAMOSA		Table 13—MANITOU BRANCH		Table 19—SALT LAKE CITY—OGDEN		Table 24—SUGAR HOUSE SPUR	
MILES	STATIONS	MILES	STATIONS	MILES	STATIONS	MILES	STATIONS
0	Pueblo	0	Colorado Springs	0	Salt Lake City	0	Salt Lake City
2.0	Minniequa	2.7	Colorado City	5.8	North Salt Lake	2.7	Roper
14.6	Marnel			8.5	Woods Cross	8.0	Sugar House
23.3	Cedarwood			15.5	Farmington		Cement Quarry
34.4	Lascaz			19.3	Kaysville		
45.1	Sandy			22.1	Layton		
55.6	Walsenburg			25.7	Clearfield		
70.9	La Veta			30.0	Roy		
108.3	Fort Garland			36.9	Ogden		
113.0	Blanca						
132.3	Alamosa						

FREIGHT SERVICE ONLY

COLORADO AND NEW MEXICO LINES

Table 7—LEADVILLE BRANCH		Table 14—ALAMOSA BRANCH		Table 20—MARYSVALE BRANCH		Table 25—PROVO CANYON BRANCH	
MILES	STATIONS	MILES	STATIONS	MILES	STATIONS	MILES	STATIONS
0	Malta	0	Alamosa	0	Thistle	0	Provo
4.9	Leadville	4.9	Monte Vista	7.7	Pines	1.1	Smoot
		5.0	Del Norte	14.8	Indianola	5.8	Caryhurst
		11.9	Wagon Wheel Gap	23.3	Hill Top	9.3	Nunn's
		18.3	Creede	27.2	Milburn	10.6	Upper Falls
		69.0		28.5	Garfield	11.8	Vivian Park
				32.0	Monarch	17.2	Wallsburg
				38.6	Fairview	24.2	Charleston
				44.1	Mount Pleasant	27.9	Heber
				53.4	Spring City		
				60.8	Ephraim		
				66.3	Manti		
				72.9	Sterling		
				82.6	Gunnison		
				86.4	Axtell		
				91.6	Redmond		
				96.3	Salina		
				100.1	Aurora		
				103.7	Sigurd		
				111.7	Kema		
				116.5	Richfield		
				120.6	Elsinore		
				132.2	Joseph		
					Sevier		
					Marysval		

FOR PERFECT SHIPPING

- Pack RIGHT
- Label RIGHT
- Bill RIGHT
- Stow RIGHT

SHIP IT...
Rio-Grande

PROTECT YOUR LUGGAGE Identify Your Baggage by Placing Your Name and Address Inside and Outside BUY ROUND TRIP TICKETS AND SAVE TRAVEL ON CREDIT CONSULT AGENT

Interchange with Western Pacific, carload freight only.

CONDENSED SCHEDULES VIA CONNECTING LINES

Table with multiple sections: BURLINGTON LINES, COLORADO & SOUTHERN-FT. WORTH & DENVER RYS., MISSOURI PACIFIC R. R., ROCK ISLAND LINES, SOUTHERN PACIFIC COMPANY, UNION PACIFIC R. R., WESTERN PACIFIC R. R. Each section lists train routes, departure times, and arrival times.

Reference Notes: * Daily. mst Mountain Standard Time. cst Central Standard Time. Joint service via G.N.-N.P.-U.P. Leave Salt Lake City and San Francisco Sunday, Wednesday and Friday. Light face figures A. M. Bold face figures P. M.

SALT LAKE CITY visitors are welcome to the free organ recitals presented daily, except Sunday, at 12 noon, by celebrated artists in the great domed Mormon Tabernacle, famed for its superb acoustics. Sunday recitals at 4:00 P.M. The nationwide radio broadcast of the Mormon Tabernacle Choir and Organ is presented each Sunday at 8:30 A.M.

INFORMATION

SPECIAL NOTICE. The time shown in this folder is subject to change without notice; is that at which arrival may be expected to arrive at and depart from the several stations, but their arrival or departure at the time stated is not guaranteed. This Company reserves the right to discontinue trains, change schedules, and substitute equipment, and will not be responsible for any delay or other deviation from conditions outlined in this time table.

ADJUSTMENT OF FARES. Should any difference arise between yourself and the conductor, pay the fare requested, take receipt for the amount, and refer the matter to the Passenger Traffic Manager, Denver, Colo., for adjustment.

CHILDREN under 5 years of age, free, when accompanied by parent or guardian; 5 years of age and under 12, one-half fare; 12 years of age or over, full fare.

CHILDREN TRAVELING ALONE. Children under 5 years of age must be accompanied by an adult. Children of half fare age when unaccompanied by parent or guardian will not be accepted unless authorized by Ticket Agent, and arrangements for such acceptance must be made in advance.

STOPOVERS are permitted at any point enroute where trains are scheduled to stop, within limit of ticket.

FREE SIDE TRIP PUEBLO TO COLORADO SPRINGS OR DENVER AND RETURN. Side trip tickets from Pueblo to Colorado Springs and return will be furnished to holders of tickets reading over the Mo. Pac., sold at stations east of and including Geneseo, Kan., destined to Salt Lake City, Utah, or points beyond, or the reverse. Side trip tickets Pueblo to Denver and return are furnished only in connection with round-trip tickets. Consult D. & R. G. W. or Mo. Pac. conductor, or UNION DEPOT TICKET AGENT, PUEBLO, COLO.

FREE SIDE TRIP DENVER TO COLORADO SPRINGS AND RETURN. Arrangements are in effect whereby passengers may obtain free side trips Denver to Colorado Springs and return on certain tickets without additional charge. Side trip tickets may be included in original ticket, or obtained upon presentation of through round-trip excursion ticket, within limit, at Denver Union Station, or any C. B. & Q., C. R. I. & P. or U. P. ticket office at Denver.

CHOICE OF ROUTES. Tickets reading via D. & R. G. W. between Denver, Colorado Springs or Pueblo and Salt Lake City or Ogden will be honored either via Canon City and the Royal Gorge or via the Moffat Tunnel Route (Dotsero Cut-off), except as otherwise provided by tariff.

REDEMPTION OF TICKETS. For refund on partially used or wholly unused D. & R. G. W. rail tickets, consult local ticket agent, or mail tickets, with explanation of non-use to H. F. Eno, Passenger Traffic Manager, D. & R. G. W. R. R., Room 101 Rio Grande Bldg., 1531 Stout St., Denver 17, Colo.

BEFORE BOARDING TRAINS ask the ticket agent, brakeman, or conductor whether the train stops at the station to which you may be ticketed. There are stations at which some trains do not stop.

STOPPING TRAINS ON SIGNAL. Where trains are scheduled to stop only on signal, passengers on trains must give advance notice to conductor, and persons intending to board trains must advise agent to that effect, in order that necessary arrangement may be perfected.

TICKET HONORING. All classes of tickets will be honored on all trains, except 20-day excursion, Drivers, Caretakers and Banana Messenger tickets will not be honored on the California Zephyr, Trains 17 and 18, and 25 Day round-trip reduced rate Prospector first-class tickets will be valid only on trains 7 and 8. EXCEPTION: Drivers tickets will be honored on all trains, except on the California Zephyr, Trains 17 and 18, to regular or flag stops (not conditional stops) except that Train No. 1 will stop at any station west of Pueblo where conditional stops are authorized, to discharge passengers holding Drivers tickets.

BAGGAGE. Passengers are requested to take advantage of the baggage checking privileges offered by the railroads and check thru to destination all baggage not required for personal use enroute.

In addition to any baggage carried, an additional 150 pounds of personal baggage not exceeding \$100 in value may be checked on each adult ticket without additional charge. Around-the-World or Trans-Pacific passengers may check 350 pounds not exceeding \$100 in value on each adult ticket without additional charge. A maximum of 300 pounds is allowed without charge to each family group traveling on Family Fare Plan tickets. Baggage may be checked thru to residences, hotels, steamship piers, etc., on payment of charges to cover transfer beyond railroad stations.

Articles of unusual value, such as jewelry, money, negotiable instruments, etc., as well as fragile articles and liquids which may damage other contents of the baggage, must not be included in checked baggage. Carriers will not be responsible for loss or damage resulting from these articles being included in baggage.

Each passenger may declare a higher value than the free allowance at time of checking. A nominal charge will be made for each \$100 of additional value so declared. The value of baggage checked on one ticket is limited to \$2500.

Baggage insurance for protection against loss or damage to all baggage (both checked and unchecked) for the duration of the entire journey may be purchased for a small charge at most ticket offices and baggage checking counters.

To insure baggage being at destination on arrival, it should be checked as much in advance of departure as possible. Storage charges accrue after baggage has been on hand at destination over 24 hours.

All baggage should carry proper identification to assist in case of loss or misplacement. Dogs and other small pets may be checked in baggage service subject to tariff regulations. To save possible disappointment, owners should comply with quarantine regulations before checking pets.

In addition to personal baggage, a limited number of articles such as golf clubs, bicycles, baby carriages, etc., may be checked without charge in baggage service. See checking agent.

Agents will be glad to assist in the recovery of LOST ARTICLES. Inquiries regarding lost articles and baggage problems should be addressed to J. H. Tanner, Assistant Passenger Traffic Manager, Denver, Colorado.

RAIL AND PULLMAN FARES

The fares shown below are those in effect April 1, 1958, and do not reflect any increase which may be authorized at a subsequent date. These fares are quoted as information only, are subject to change without notice, and they do not include 10% Federal and 2% Utah taxes.

Table with columns: RAILROAD FARES (In Coaches, In Pullmans), One-Way Pullman Fares (Standard Car, Lower Berth, Seat Fare Day Travel). Rows include COLORADO SPRINGS TO, DENVER TO, GLENWOOD SPRINGS TO, GRAND JUNCTION TO, PUEBLO TO, SALT LAKE CITY TO, SAN FRANCISCO TO.

Coach tickets valid in Slumbercoach on The Denver Zephyr—Reserved single room charge Colorado Springs to Chicago \$7.50, \$13.50 double, plus tax.

FARES FOR OTHER STANDARD PULLMAN ACCOMMODATIONS Based on charge for Lower Berth as shown in above table. Applies only between points where through Pullman fares are published—not to combination Pullman fares.

Table with columns: WHERE LOWER BERTH FARE IS, Upper berth fare will be, Roomette fare for one person will be, Bedroom Fare (for one person, two persons), Compartment Fare (for one person, two or more persons), Drawing Room Fare (for one person, two or more persons).

Exclusive Space Occupancy by One Person: One and one-fourth railroad tickets must be purchased for exclusive use of drawing room; one adult rail ticket for compartment, bedroom or roomette. (Night occupancy.) * Applies via direct route.

Yes, Rio Grande has the FAMILY FARE PLAN. Take the whole family by train and SAVE. Here's how it works: On one-way trips, one parent pays full fare (either coach or Pullman); other parent and all children from ages 12 through 21 pay one-half regular fare; children 5 through 11 pay one-fourth fare; children under five ride free. On round trips, one parent pays the full round trip fare; other parent and children 12 through 21 pay the usual one-way fare; children 5 through 11 pay half the usual one-way fare; children under five ride free. These family fares are good on all Rio Grande trains except The Silverton. Trips must start on Mondays, Tuesdays, Wednesdays or Thursdays.



The Western Feldspar Milling Co. plant at Salida, Colo., produces high quality feldspar from deposits in the Salida area. The raw material is milled and refined in this modern plant and rail-shipped to manufacturers. Principal use of feldspar is in the manufacture of glass, pottery and ceramics.

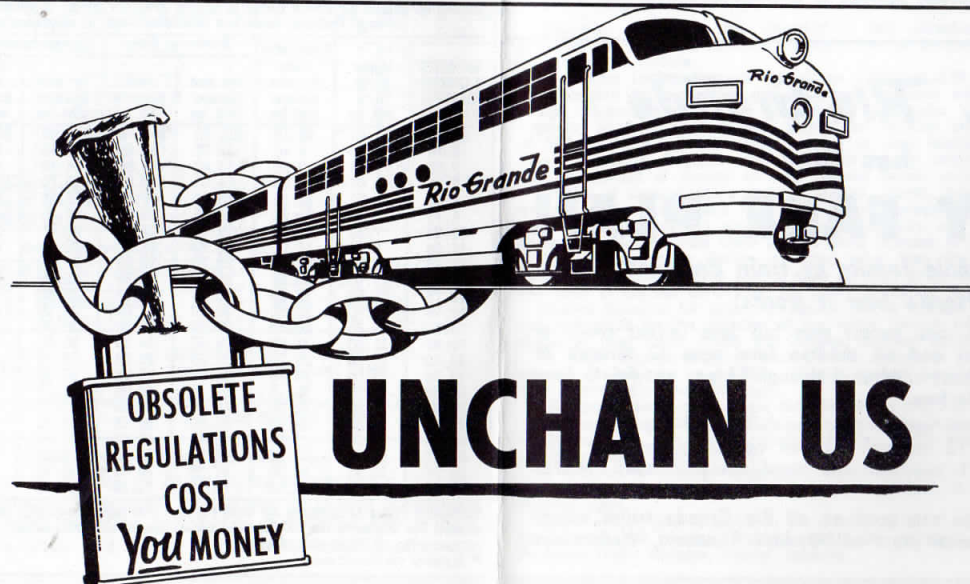
There's Only One Place for Your Plant (Branch Office, New Business, or Distribution Center) . . .

- . . . a place with adequate water, power, resources . . . ample productive labor . . . and **good** transportation!
- . . . a place where living is enjoyable and it's as easy to raise a family as a business!
- . . . a place that's uncrowded but thriving . . . an industrial frontier with room to grow!
- . . . a place with progress a-plenty . . . in America's fastest growing market area!
- . . . a place . . . the **right** place . . . in Grande Land . . . the Colorado-Utah business belt.

To help you put your plant in ITS place . . . we'll be happy to arrange a site-seeing tour.

No obligation . . . all inquiries will be held in confidence.

Address inquiries to E. L. Beardsley,
Director of Industrial Development
Rio Grande Building, P. O. Box 5482
Denver 17, Colorado



"OLD KING COAL"

The new multi-million dollar coal washing plant of Columbia-Geneva Division of United States Steel Corp., at Wellington, Utah, is a symbol of industrial growth in the intermountain west. Built to provide better quality coking coal for blast furnaces at nearby Provo, the plant is equipped to wash and blend more than 600 tons of raw coal an hour from mines in Utah and Colorado. The washed coal produces better coke yield and superior blast furnace performance because of the reduction of ash and sulphur content in the coal.

The main building (1) in the 1400 acre installation is 13 stories high and contains all coal washing equipment. Coal is carried to the washing machinery by an 800-ft. long conveyor (2) from giant underground hoppers (3) which are filled by loaded railroad cars. The washed coal is then reloaded (4) for the final trip to the coke ovens, and waste from the washing is carried to a refuse area by a 1580-ft. steel pipeline trestle (5).



A key part of the entire operation is railroad transportation. A 240-car capacity yard and almost 10 miles of trackage are part of this modern facility. Main line rail service is supplied by Rio Grande, maintaining an effective, working partnership in progress with U. S. Steel Corporation.

Making possible this efficient operation are the almost limitless, high-quality coal deposits in Colorado and Utah. An always potent force in the American economy, coal is still fundamental to our way of life, supplying basic energy for basic industry. The Rio Grande supplies basic transportation to serve the coal industry!

Inquiries regarding coal will be answered cheerfully by
O. D. TEETER, Assistant Freight Traffic Manager

Ample Water Brightens Farm and Orchard Prospects

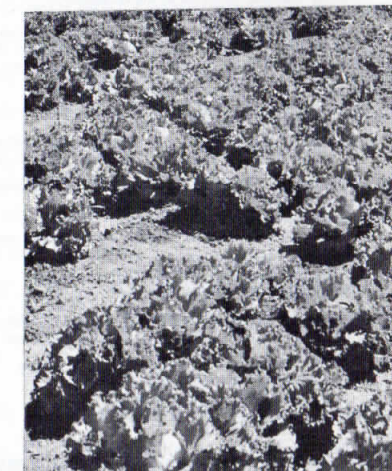
The general economy of the high country agricultural territory served by Rio Grande in Colorado and Utah is sound as the 1958 growing season progresses.

Prospects are excellent for ample irrigation water throughout Grande-land. Yields of fields and orchards well may reach bumper proportions.

Orchards wintered well. The combination of grower know-how, mountain water, brilliant sunshine and high altitude assures top-quality fruit from western Colorado and central Utah.

Colorado lettuce is well established on the nation's markets. It is a major crop of America's roof-garden, the vast San Luis Valley. This lettuce reaches the consumer fresh, crisp and firm because shippers use vacuum-cooling equipment in readying the lettuce for speedy railroad refrigerator car transportation.

San Luis Valley potatoes, perennial favorites, are a top-quality dependable crop because growers carefully select seed and practice modern growing and harvesting methods. Ample irrigation water assures good yield.



Head lettuce — San Luis Valley

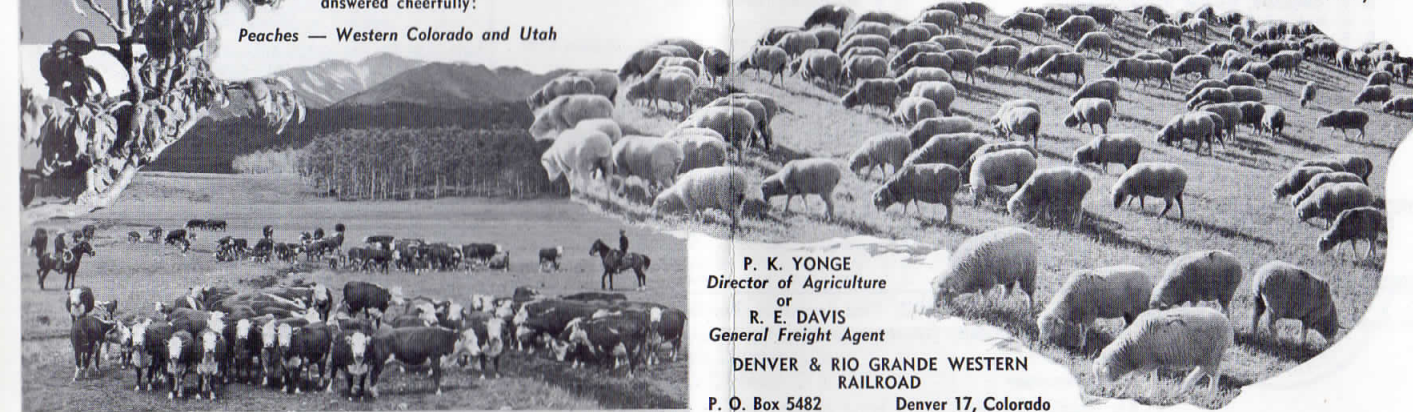


Peaches — Western Colorado and Utah

Grande-Land Produces Finest Livestock in the West

End of the drouth, with consequent improved grazing, has enabled Colorado and Utah cattlemen and sheepmen to replenish herds and flocks. Cattle growers and sheep growers constantly improve the quality of breeding stock, with consequent betterment of all animals marketed.

Thus it is that Colorado and Utah livestock commands premium prices from feeders and packers. Inquiries regarding farming and livestock production in Grande-land will be answered cheerfully:



P. K. YONGE
Director of Agriculture
or
R. E. DAVIS
General Freight Agent
DENVER & RIO GRANDE WESTERN
RAILROAD
P. O. Box 5482 Denver 17, Colorado

PERSONALIZED SERVICE

Rio-Grande passenger and freight representatives, listed below, will welcome an opportunity to assist you with any travel or shipping problems.



- ALAMOSA, COLO.**—Rio Grande Freight Depot—Phone 210
H. E. CASH, District Freight & Passenger Agent.
- ATLANTA 3, GA.**—1521 Healey Bldg.—
57 Forsyth St. N. W.—Jackson 4-4831
R. E. KNIGHT, General Agent.
- BOISE, IDAHO**—215 North Eighth St.—Phone 2-1722
G. L. NICOLIN, General Agent
T. F. MEYER, District Freight Agent.
- BOSTON 16, MASS.**—411 Little Bldg.—
80 Boylston St.—Liberty 2-9891
P. P. MAGUIRE, General Agent.
- CHICAGO 3, ILL.**—Suite 2321 Bankers Building—
105 West Adams St.—Randolph 6-7445
G. C. CLEGG, Eastern Traffic Manager.
D. W. BALDWIN, Assistant General Freight Agent.
J. B. WILLIAMS, Traffic Manager.
C. J. DOMBROW, General Agent.
W. H. MESTER, District Passenger Agent.
D. J. LEWIS, District Freight Agent.
J. A. BURKE, District Freight Agent.
R. K. HANSEN, District Freight Agent.
M. L. COLBY, Dist. Frt. & Psgr. Agt. (Milwaukee)
R. W. BAILEY, District Freight & Passenger Agent.
W. P. MENARD, District Freight & Passenger Agent.
- CINCINNATI 2, OHIO**—1431 Enquirer Bldg.—
617 Vine St.—Parkway 1-3212
C. M. WILDT, General Agent.
E. H. NELSON, Dist. Frt. & Psgr. Agt. (Columbus)
T. D. ODWALT, Dist. Frt. & Psgr. Agt. (Louisville)
- CLEVELAND 13, OHIO**—509 Terminal Tower Building—
50 Public Square—Cherry 1-7386
W. M. DODDS, General Agent.
R. W. LUSIN, District Freight & Passenger Agent.
- COLORADO SPRINGS, COLO.**—
Rio Grande Passenger Depot—Melrose 4-4857
R. L. TAYLOR, General Agent.
- CRAIG, COLO.**—Rio Grande Freight Depot—Taylor 4-6546
E. G. DEAKINS, District Freight & Passenger Agent.
- DALLAS 1, TEXAS**—411 Southland Life Building
1416 Commerce St.—Riverside 2-6322
J. B. LATIMER, General Agent.
T. J. BACON, Dist. Frt. & Psgr. Agent (Houston)
- DENVER 17, COLO.**—
Rio Grande Bldg.—1531 Stout St.—AComa 2-5533
City Ticket Office—Room 101—Main Floor
B. E. GREGORY, General Passenger Agent.
J. W. HAMILTON, City Ticket Agent.
D. G. FRAZIER, District Passenger Agent.
T. D. JOHNSON, Depot Passenger Agent.
Freight Department, Room 101—Main Floor
W. S. MOORE, General Agent, Freight Department.
A. D. COX, District Freight Agent.
C. L. RAHNE, District Freight Agent.
J. D. WRIGHT, District Freight Agent.
R. L. THOMPSON, District Freight Agent.
D. J. IZETT, Livestock Agent.
- DETROIT 2, MICH.**—5-157 General Motors Bldg.—
3044 West Grand Blvd.—Trinity 5-3025
P. O. SPURGEON, General Agent.
W. A. SIEBERT, District Freight & Passenger Agent.
E. C. NIELSEN, District Freight & Passenger Agent.
- EUGENE, ORE.**—230 Ardel Offices
33 Tenth Avenue East—Diamond 5-8535
J. T. HULL, General Agent.
- FRESNO 21, CAL.**—207 T. W. Patterson Bldg.—
2014 Tulare St.—Amherst 4-3290
M. E. PYEATT, General Agent.
C. E. MILLS, District Freight & Passenger Agent.
- GRAND JUNCTION, COLO.**—
Rio Grande Freight Depot—Chapel 3-2550
W. J. MOORE, General Agent.
- KANSAS CITY 5, MO.**—602 Board of Trade Bldg.
127 West Tenth St.—Victor 2-5520
J. W. SAMPLE, General Agent.
K. N. HAHNE, District Frt. & Psgr. Agent (Wichita)
W. E. MILLER, District Freight & Passenger Agent.
- LOS ANGELES 14, CAL.**—841 Pacific Mutual Bldg.
523 West Sixth St.—Madison 9-2156
O. V. HOWARD, General Agent.
L. S. BRISTOL, District Freight Agent.
E. D. BURKE, District Freight Agent.
R. E. PORT, District Freight Agent.
W. C. CRAIG, District Freight Agent.
- MEDFORD, ORE.**—108 O. L. Davis Bldg.—
34 North Central Avenue—Spring 2-5243
R. L. BURNETT, District Freight & Passenger Agent.
- MINNEAPOLIS 2, MINN.**—360 Rand Tower
527 Marquette Ave.—Federal 3-7888
C. W. CAMPBELL, General Agent.
- NEW YORK 36, N. Y.**—500 Fifth Ave., Room 220.
Chickering 4-7515
A. C. DICK, Traffic Manager.
W. C. RUBIEN, District Freight & Passenger Agent.
J. W. WESTLAKE, District Freight & Passenger Agent.
J. R. MELANSON, District Freight & Passenger Agent.
C. J. DOBOL, District Freight Agent.
T. V. SIMMONS, District Freight Agent.
W. T. BOETTIGHEIMER, District Freight Agent.
- OAKLAND 12, CAL.**—514 Central Bldg.—
14th & Broadway—Glencourt 1-4925
M. E. CHASE, General Agent.
W. B. WAGNER, District Freight & Passenger Agent.
T. M. SAFFOLD, District Freight & Passenger Agent.
- OGDEN, UTAH**—Rio Grande Freight Depot
130 24th Street—Export 3-3325
R. B. WILLIAMS, General Agent.
- OMAHA 2, NEB.**—
512 Grain Exch. Bldg., 19th & Harney—Jackson 5100
J. D. KEY, General Agent.
R. G. SCHWARTZ, Dist. Frt. & Psgr. Agt. (Cedar Rapids)
O. F. WAGNER, District Freight & Passenger Agent.
J. G. FARRIS, District Freight & Passenger Agent.
- PHILADELPHIA 7, PA.**—1535 Phila. Saving Fund Bldg.
12 South Twelfth St.—Walnut 2-2323
J. J. O'DONNELL, General Agent.
G. A. LEE, District Freight & Passenger Agent.
- PITTSBURGH 22, PA.**—823 Oliver Bldg.
Mellon Square.—Atlantic 1-4242
F. E. HILL, General Agent.
J. F. MALONEY, District Freight & Passenger Agent.
J. L. SPRINGER, District Freight & Passenger Agent.
- PORTLAND 4, ORE.**—417 Pacific Bldg.
520 S. W. Yamhill St.—Capitol 3-6104
W. M. KIRKPATRICK, Traffic Manager.
N. W. VORPAHL, District Freight & Passenger Agent.
H. T. JOHNSON, District Freight & Passenger Agent.
- PROVO, UTAH**—Rio Grande Freight Depot
6th South and 3rd West—Franklin 3-6900
S. D. BURNSIDE, District Freight & Passenger Agent
- PUEBLO, COLO.**—Room 12, Union Depot
Phones Lincoln 4-7030, Lincoln 2-2374
J. M. JENSEN, Traffic Manager.
W. H. MOORE, District Freight & Passenger Agent.
E. H. BROWN, District Freight & Passenger Agent.
- RENO, NEV.**—805 Haskell St.—Fairview 2-1373
H. H. HILL, General Agent.
- SACRAMENTO 14, CAL.**—926 Forum Bldg.
1107 Ninth Street—Gilbert 3-2027
J. B. HUNTER, General Agent.
A. F. HOLMAN, District Freight & Passenger Agent.
- ST. LOUIS 3, MO.**—
1218 Olive St., Suite 1010—Garfield 1-3670
H. A. ROBERTSON, Traffic Manager.
J. M. SINCLAIR, District Freight & Passenger Agent.
H. A. DEHNE, District Freight & Passenger Agent.
J. L. WELLS, District Frt. & Psgr. Agent (Memphis)
A. L. BURSON, Dist. Frt. & Psgr. Agt. (New Orleans)
- SALT LAKE CITY 11, UTAH**—Hotel Utah
South Temple & Main—Davis 2-5741
J. K. SPEIGHT, Traffic Manager.
D. P. HEINER, General Agent, Passenger Dept.
R. S. LAWRENCE, General Agent, Freight Dept.
H. L. JOHNSON, City Ticket Agent.
J. C. WALDIE, Depot Passenger Agent.
G. W. BUNNER, District Freight Agent.
J. E. BERRY, District Freight Agent.
CECIL PEARSON, District Freight Agent.
P. G. SEAL, District Freight Agent.
- SAN FRANCISCO 5, CAL.**—291 Monadnock Bldg.—
681 Market St.—Garfield 1-2688
C. J. HARBEKE, Western Traffic Manager.
T. O. PROUDFOOT, Assistant General Freight Agent.
C. B. LOWRY, Assistant to Western Traffic Manager.
A. A. BOLTON, Traffic Manager.
R. G. DeGUIRE, District Passenger Agent.
J. McMILLEN, Dist. Frt. & Psgr. Agent (Santa Rosa)
G. A. CRONIN, District Freight Agent.
R. A. HANSEN, District Freight Agent.
J. C. WILDERMUTH, District Freight Agent.
R. M. WENDELIN, District Freight Agent.
- SAN JOSE 13, CAL.**—310 Bank of America Bldg.—
First and Santa Clara Sts.—Cyprus 3-1762
F. D. LUCAS, General Agent.
- SEATTLE 1, WASH.**—503 White-Henry-Stuart Bldg.
4th & University—MAIn 3-8482
E. K. YAEGER, General Agent.
- STOCKTON 2, CAL.**—309 American Trust Company Bldg.—
22 North San Joaquin St.—Howard 5-2072
M. W. WELDON, General Agent.
- WASHINGTON 5, D. C.**—535 Shoreham Bldg.
15th & H Sts. N. W.—Executive 3-0373
J. L. HENNING, General Agent.
J. T. QUINN, Dist. Frt. & Psgr. Agt. (Greensboro, N.C.)

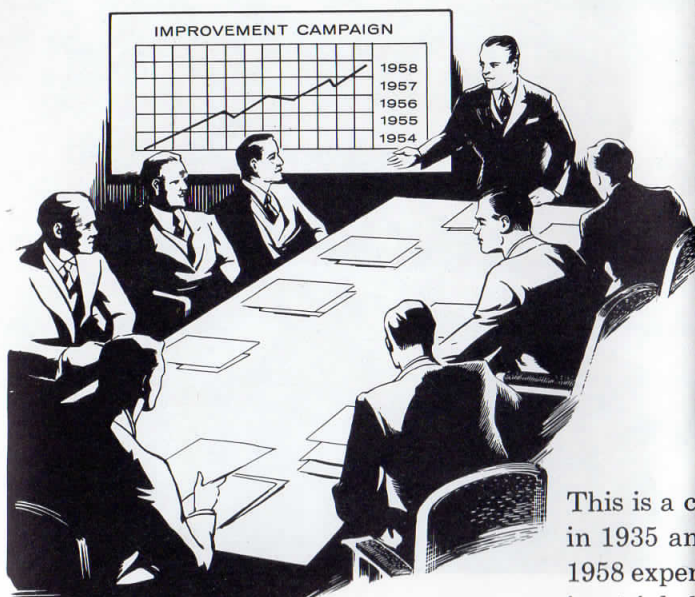
R. K. BRADFORD, Vice-President—Traffic
H. F. BURNAUGH, Assistant to Vice-President—Traffic
H. F. ENO, Passenger Traffic Manager
J. C. BORG, Freight Traffic Manager
J. G. SIMPSON, Freight Traffic Manager
Rio Grande Building, 1531 Stout Street, Denver, Colorado



*With confidence and faith
in the people it serves...*

Rio-Grande Allocates 7 Million Dollars for 1958 Improvement Campaign

The Board of Directors of the DENVER & RIO GRANDE WESTERN RAILROAD has authorized a \$7 million improvement program for 1958.



This is a continuation of a never-ceasing building program begun in 1935 and already totaling more than \$152 million. Half of the 1958 expenditure is devoted to purchase of new equipment, including triple hopper cars, covered hoppers and cabooses; the balance will provide for rail, roadway and other plant improvement.

Keeping the Rio Grande in the best possible shape to operate under all conditions is the foremost responsibility of Rio Grande management. The excellent physical condition of the railroad is being maintained and major additions made to plant and equipment to meet exacting demands of business and industry served by the Direct Central Transcontinental Route.

To you, shipper and passenger, this progressive management policy is testimony again to the faith your Rio Grande has in you... and the great nation it serves.

DENVER & RIO GRANDE WESTERN RAILROAD

R. K. BRADFORD, Vice President—Traffic • Rio Grande Bldg. • Denver, Colorado

- Route of the ...
- Vista-Dome CALIFORNIA ZEPHYR
 - PROSPECTOR
 - Vista-Dome ROYAL GORGE
 - Vista-Dome COLORADO EAGLE



THE DIRECT CENTRAL TRANSCONTINENTAL ROUTE



Traffic Offices
in 37 Cities

