



By whatever name, on whatever railroad over whatever route—the revolutionary dome car was born here, on the Denver & Rio Grande Western Railroad's Main Line Thru the Rockies! "Monument to An Idea" is located in Glenwood Canyon, 5 miles east of Glenwood Springs, Colorado. Vista-Dome cars are in regular daily service on the California Zephyr (Chicago-Denver-Salt Lake City-San Francisco, with thru New York-San Francisco Pullman), the Royal Gorge (Denver-Colorado Springs-Pueblo-Glenwood Springs-Grand Junction-Provo-Salt Lake City), and the Colorado Eagle (Denver-Colorado Springs-Pueblo-Wichita-Kansas City-St. Louis)—"SEE-all" service on three great Rio Grande streamliners!

Vista-Dome...

- ... Sky Dome Planetarium Dome ...
- ... Super Dome ...
- ... Pleasure Dome Astra Dome ...

the whole DOME Family was conceived here!



DENVER AND RIO GRANDE WESTERN RAILROAD

THE DIRECT CENTRAL TRANSCONTINENTAL ROUTE

Rio Grande
TIME TABLES

**ROYAL
GORGE
ROUTE**



Royal Gorge of the Arkansas River

DENVER & RIO GRANDE WESTERN RAILROAD

MAIN LINE THRU THE ROCKIES

Rio Grande
TIME TABLES

**MOFFAT
TUNNEL
ROUTE**



California Zephyr—Glenwood Canyon, Colorado River

DENVER & RIO GRANDE WESTERN RAILROAD

MAIN LINE THRU THE ROCKIES

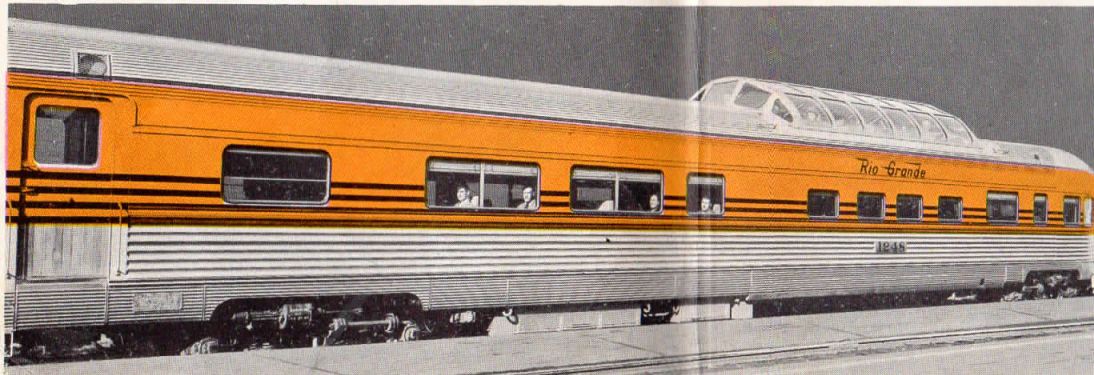
TOPS IN TRAVEL



**EXTRA
COMFORT**



**EXTRA
LUXURY**



**NO
EXTRA
FARE**

DENVER & RIO GRANDE WESTERN RAILROAD

TABLE OF CONTENTS

Condensed Through Schedules.....	Pages 2 and 3	Map.....	Pages 8 and 9
Connecting Lines' Schedules.....	Page 12	Station Index.....	Page 1
Fares—Rail and Pullman.....	Page 13	Train Schedules and Equipment.....	Pages 4, 5, 6, 7 and 10
General Information.....	Page 15	Traffic Department Representatives.....	Page 16
Lines Operated in Freight Service Only.....	Pages 11 and 12	Transcontinental Pullman Car.....	Page 2

INDEX TO PRINCIPAL TRAIN SCHEDULES

THE CALIFORNIA ZEPHYR.....	Pages 2, 4 and 5	THE PROSPECTOR.....	Pages 3, 4 and 5
THE COLORADO EAGLE.....	Pages 3 and 6	THE ROYAL GORGE.....	Pages 3, 6 and 7
THE MOUNTAINEER.....	Page 4	THE YAMPA VALLEY MAIL.....	Pages 4 and 10

INDEX TO PRINCIPAL STATIONS

TABLE NO.	TABLE NO.	TABLE NO.	TABLE NO.	TABLE NO.	TABLE NO.
Acequia, Colo..... 2	Clear Creek, Utah..... 27	Fraser, Colo..... 1, 3	Kaysville Utah..... 19	Monument, Colo..... 2	Radium, Colo..... 1, 3
Ah Wilderness, Colo..... 4	Clifton, Colo..... 1, 2	Fruita, Colo..... 1, 2	Kearns, Utah..... 28	Monrovi, Utah..... 21	Ralston, Colo..... 1, 3
Alamosa, Colo..... 6, 8, 14, 16	Colona, Colo..... 9		Kebler No. 2, Colo..... 12	Mosca, Colo..... 14	Range, Colo..... 1
Allison, Colo..... 16	Colorado City, Colo..... 13		Kema, Utah..... 20	Mounds, Utah..... 1, 2, 26	Red Cliff, Colo..... 2
American Fork, Utah..... 1, 2	Colorado Springs, Colo..... 2, 13	Garfield, Colo..... 15	Kremmling, Colo..... 1, 3	Mt. Harris, Colo..... 3	Redmond, Utah..... 20
Antonito, Colo..... 16	Colton, Utah..... 1, 2, 27	Garfield, Utah..... 28	Kyune, Utah..... 1, 2	Mt. Pleasant, Utah..... 20	Richfield, Utah..... 20
Arboles, Colo..... 16	Columbia Junction, Utah..... 26	Garfield Junction, Utah..... 28			Ridgway, Colo..... 9
Arvada, Colo..... 1, 3	Concrete, Colo..... 2	Garfield Smelter, Utah..... 28			Rifle, Colo..... 1, 2
Aspen, Colo..... 5	Cotopaxi, Colo..... 2	Gato, Colo..... 16	Lacy, Colo..... 1, 2	Riverside, Colo..... 2	Riverport, Utah..... 1, 2
Aurora, Utah..... 20	Craig, Colo..... 3	Geneva, Utah..... 1, 2	La Jara, Colo..... 18	Rockwood, Colo..... 4	Rockwood, Colo..... 4
Austin, Colo..... 10	Creede, Colo..... 8	Gilluly, Utah..... 1, 2	Larkspur, Colo..... 2	Rothwell, Colo..... 1, 3	Rothwell, Colo..... 1, 3
Avon, Colo..... 2	Crescent, Colo..... 1, 3	Glen, Colo..... 1	Lascar, Colo..... 6	Romeo, Colo..... 16	Roper, Utah..... 1, 2, 24
Axtell, Utah..... 20	Cumbres, Colo..... 16	Glenwood Springs, Colo..... 1, 2, 5	La Veta, Colo..... 6	Routt, Colo..... 3	Roy, Utah..... 19
Aztec, N. M..... 17		Gore, Colo..... 1, 3	Layton, Utah..... 19	Royal Gorge, Colo..... 2	
		Goshen, Utah..... 1, 3	Leadville, Colo..... 2, 7		
Bacchus, Utah..... 28	DeBeque, Colo..... 1, 2	Grand Junction, Colo..... 1, 2, 9	Lehi, Utah..... 1, 2		
Banning, Utah..... 26	Dell, Colo..... 1		Leon, Colo..... 5	Oak Creek, Colo..... 3	
Bear River, Colo..... 3	Delta, Colo..... 9, 10	Grand Valley, Colo..... 1, 2	Leyden Jct., Colo..... 1, 3	Oak Creek, Utah..... 20	
Belden, Colo..... 2	Del Norte, Colo..... 8	Greenland, Colo..... 2	Littleton, Colo..... 2	Oak Hills, Colo..... 3	Salida, Colo..... 2, 15
Bingham, Utah..... 28	Denver, Colo..... 1, 2, 3	Green River, Utah..... 1, 2	Loma, Colo..... 1, 2	Ogden, Utah..... 1, 2, 19	Salina, Utah..... 20
Blanca, Colo..... 6	Dividend, Utah..... 22, 23	Gunnison, Utah..... 20	Louviers, Colo..... 2	Ogden, Utah..... 1, 2, 19	Salt Lake City, Utah..... 25
Bond, Colo..... 1	Dotsero, Colo..... 1, 2	Gypsum, Colo..... 2	Ludlow, Colo..... 11	Olathe, Colo..... 9	Sands, Utah..... 28
Bondad, Colo..... 17	Dragerton, Utah..... 26		Lumberton, N. M..... 16	Oliver, Utah..... 1, 2	Sands, Utah..... 28
Bridgeport, Colo..... 9	Dulce, N. M..... 16	Hanging Bridge, Colo..... 2	Lynn, Colo..... 11	Orested, Utah..... 1, 3	Sands Junction, Utah..... 28
Brookston, Colo..... 3	Durango, Colo..... 4, 16, 17	Hayden, Colo..... 3		Oster, Colo..... 16	Sandy, Colo..... 26
Brown Canon, Colo..... 2		Haybro, Colo..... 3			Santaquin, Utah..... 22
Buena Vista, Colo..... 2		Heber, Utah..... 25	Mack, Colo..... 1, 2	Palsade, Colo..... 1, 2	Scofield, Utah..... 27
Burnham, Colo..... 2		Helper, Utah..... 1, 2	Malta, Colo..... 2, 7	Palmer Lake, Colo..... 2	Sedalia, Colo..... 2
Buttes, Colo..... 2	Eagle, Colo..... 2	Henkel, Colo..... 2	Manti, Utah..... 20, 21	Pando, Colo..... 2	Sevier, Utah..... 20
	East Portal, Colo..... 1, 3	Hill Top, Utah..... 20	Marnel, Colo..... 6	Paonia, Colo..... 10	Shoshone, Colo..... 1, 2
Cameo, Colo..... 1, 2	Eden, Colo..... 2	Hobson, Colo..... 20	Marysville, Utah..... 20	Parkdale, Colo..... 2	Sigurd, Utah..... 20
Canon City, Colo..... 2	Egeria, Colo..... 3	Hooper, Colo..... 14	Mayne, Colo..... 11	Parshall, Colo..... 1, 3	Silt, Colo..... 1, 2
Carbondale, Colo..... 5	Elkdale, Colo..... 1, 3	Hotchkiss, Colo..... 10	Maysville, Colo..... 15	Payson, Utah..... 22	Silverton, Colo..... 4
Caryhurst, Utah..... 25	Elsinore, Utah..... 20	Hot Sulphur Springs, Colo..... 1, 3	McCoy, Colo..... 3	Pearl, Utah..... 23	Smoot, Utah..... 25
Cary Ranch, Colo..... 3	Emma, Colo..... 5	Howard, Colo..... 2	Midvale, Utah..... 1, 2, 28	Pikeview, Colo..... 3	Soldier Summit, Utah..... 1, 2
Castilla, Utah..... 1, 2	Englewood, Colo..... 2	Husted, Colo..... 2	Milburn, Utah..... 20	Pine Cliff, Colo..... 1, 3	Somerseset, Colo..... 10
Castle Gate, Utah..... 1, 2	Ephraim, Utah..... 20, 21		Milner, Colo..... 3	Pinon, Colo..... 2	Spanish Fork, Utah..... 22
Castle Rock, Colo..... 2	Eureka, Utah..... 22	Ignacio, Colo..... 16	Minnequa, Colo..... 6	Plainview, Colo..... 1, 3	Spring City, Utah..... 20
Cattle Creek, Colo..... 5	Fairview, Utah..... 20	Indianola, Utah..... 20	Minturn, Colo..... 2	Pleasanton, Colo..... 2	Springville, Utah..... 1, 2, 22
Cedar Hill, N. M..... 17	Farmington, N. M..... 17	Iron King, Utah..... 23	Monarch, Colo..... 15	Portland, Colo..... 15	Steamboat Springs, Colo..... 3
Cedarwood, Colo..... 6	Farmington Utah..... 19		Monero, N. M..... 16	Price, Utah..... 1, 2	Sterling, Utah..... 20
Cement Quarry, Utah..... 24	Flora, Utah..... 23		Monson, Colo..... 11	Provo, Utah..... 1, 2, 22, 25	Sugar House, Utah..... 24
Chama, N. M..... 16	Flora Vista, N. M..... 17		Monte Vista, Colo..... 8	Pueblo, Colo..... 2, 6	Sunnyside, Utah..... 26
Charleston, Utah..... 25	Florence, Colo..... 2	Joseph, Utah..... 20	Montrose, Colo..... 9		Swallows, Colo..... 2
Cisno, Utah..... 1, 2	Fort Garland, Colo..... 6				
Clearfield, Utah..... 19	Fountain, Colo..... 2				

If you would like to receive future issues of this time table, please mail request to
H. F. ENO, Passenger Traffic Manager
DENVER & RIO GRANDE WESTERN RAILROAD
Room 101 Rio Grande Building, 1531 Stout Street, Denver 2, Colo.

ROUTE OF THE CALIFORNIA ZEPHYR BETWEEN CHICAGO • DENVER • SALT LAKE CITY • SAN FRANCISCO

Table with columns for Read Down, Miles from Chicago, Stations, Elevation, and Read Up. Includes routes for Burlington, Denver & Rio Grande Western R.R., and Western Pacific Railroad.

TRANSCONTINENTAL PULLMAN SERVICE Between NEW YORK and SAN FRANCISCO. Car CZ-11, 6 Double Bedroom—10 Roomette Standard Sleeper on the "California Zephyr" operates westbound from New York to Chicago via Pennsylvania Railroad "Pennsylvania Limited" one day and New York Central "Lake Shore Limited" the next, eastbound from Chicago to New York via Pennsylvania Railroad "Pennsylvania Limited" one day, and New York Central "Lake Shore Limited" the next, except eastbound PRR car from Chicago on Saturdays is handled in train No. 70 leaving Chicago 6:30 P.M. (CST) arriving New York 1:00 P.M. (EST). Schedule and dates of operation shown below.

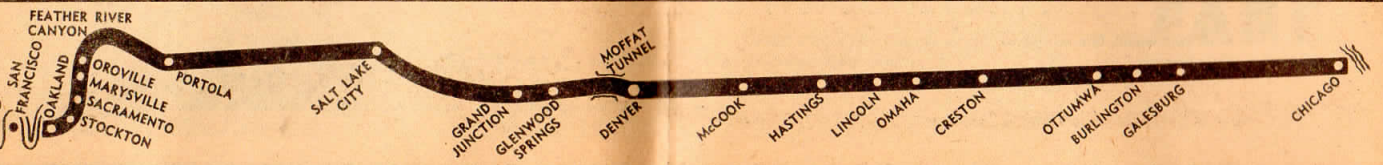
SCHEDULE (Effective Sept. 26, 1954) (Subject to Change). Table with columns for Westbound, Eastbound, and SCHEDULE. Includes dates from September to August 1955.

DATES OF OPERATION. Table with columns for Odd Dates, Even Dates, and DATES OF OPERATION. Includes dates from September 1954 to August 1955.

Table with columns for September 1954, October 1954, November 1954, December 1954, January 1955, February 1955, March 1955, April 1955, May 1955, June 1955, July 1955, August 1955. Includes S.M.T.W.T.F.S. patterns.

cst—Central Standard Time. MST—Mountain Standard Time. PST—Pacific Standard Time.

All space on the California Zephyr—both coach and Pullman—is reserved and specifically assigned in advance. Dome seats are not reserved. Checked baggage will be handled on the California Zephyr to or from Glenwood Springs and Grand Junction, Colorado, but not to or from other intermediate points between Denver and Salt Lake City. No extra fare.



ROUTE OF THE ROYAL GORGE BETWEEN DENVER • COLORADO SPRINGS • PUEBLO GLENWOOD SPRINGS • GRAND JUNCTION PROVO • SALT LAKE CITY

Table with columns for Read Down, Miles from Denver, Mountain Standard Time, Elevation, and Read Up. Includes routes for No. 1 and No. 2.

Ten minute stop to view America's best loved travel wonder. Here is located Hanging Bridge, suspended between sheer canyon walls, just 30 feet apart. Above may be seen the World's Highest Bridge, across the Royal Gorge, 1,053 feet above the railroad tracks.

Table with columns for Miles from Denver, Mountain Standard Time, Elevation, and Read Up. Includes routes for No. 1, No. 2, No. 3, No. 4, No. 5, No. 6, No. 7, No. 8, No. 9, No. 10, No. 11, No. 12.

Cross the Continental Divide at Tennessee Pass, highest main-line standard gauge railroad in the United States.

Table with columns for Miles from Denver, Mountain Standard Time, Elevation, and Read Up. Includes routes for No. 1, No. 2, No. 3, No. 4, No. 5, No. 6, No. 7, No. 8, No. 9, No. 10, No. 11, No. 12.



ROUTE OF THE PROSPECTOR BETWEEN DENVER • GLENWOOD SPRINGS • GRAND JUNCTION • PROVO • SALT LAKE CITY

Table with columns for Westbound and Eastbound. Includes Miles from Denver/Salt Lake City, Elevation, Mountain Standard Time, and No. 7/8 Daily. Includes route for No. 7 and No. 8.



MOFFAT TUNNEL ROUTE
DENVER • BOND • GLENWOOD SPRINGS • GRAND JUNCTION

Table 1: Moffat Tunnel Route schedules. Includes columns for station names, elevations, and departure/arrival times for various train numbers (e.g., No. 19, No. 7, No. 9, No. 17). Features 'READ DOWN' and 'READ UP' directions.

REFERENCE NOTES

* Daily. f Flag stop. † U. S. Mail Box located on station platform.
j Stops on flag to receive revenue passengers for Denver, Colorado Springs, Pueblo or beyond.
m Stops daily except Monday.
s Stops on flag to receive revenue passengers for points west of Bond.
t Stops to discharge revenue passengers from points west of Bond.
x Stops to discharge pay passengers from Denver, Colorado Springs and Pueblo.
Rail-Auto Service available at this point.

NOTE "A": All space on the California Zephyr—both Coach and Pullman—is reserved and specifically assigned in advance.



Good Eating
Rio Grande dining car meals are justly famous Coast to Coast. Mouth-watering steaks . . . Rocky Mountain Rainbow trout . . . a full chuck wagon of tempting taste treats.

MOFFAT TUNNEL ROUTE
GRAND JUNCTION • PRICE • PROVO • SALT LAKE CITY • OGDEN

Table 1: Moffat Tunnel Route schedules. Includes columns for station names, elevations, and departure/arrival times for various train numbers (e.g., No. 7-1, No. 17, No. 18, No. 8-2). Features 'READ DOWN' and 'READ UP' directions.

NOTE A: All space on the California Zephyr—both Coach and Pullman—is reserved and specifically assigned in advance.
NOTE B: D&RGW passenger trains originate and terminate at Salt Lake City. Tickets reading via D&RGW between Salt Lake City and Ogden will be honored on Union Pacific trains. See page 12 for schedules.

JUST SAY - "CHARGE IT" Rio Grande travelers can enjoy charge account convenience for their transportation needs by obtaining a Rail Travel Credit Card. For application forms, apply to H. F. Eno, Passenger Traffic Manager, Rio Grande Building, Denver, Colo.

EQUIPMENT
(All equipment is air conditioned)
Nos. 17 and 18—THE CALIFORNIA ZEPHYR
(Stainless Steel, Streamlined, Diesel-Power)

Vista Dome, Observation Lounge—Standard Sleeper between Chicago and San Francisco (CZ-10) 1 Drawing-room, 3 Dbl. Bedrooms, via C. B. & Q.-D. & R. G. W.-W. P.
Standard Sleeper between New York and San Francisco (CZ-11) 6 Dbl. Bedrooms, 10 Roomettes, via N. Y. C. and P. R. R. on alternate days between New York and Chicago, thence C. B. & Q.-D. & R. G. W.-W. P. (See page 2 for details.)
Standard Sleeper between Chicago and San Francisco (CZ-12) 16 Sections, via C. B. & Q.-D. & R. G. W.-W. P.
Standard Sleepers between Chicago and San Francisco (CZ-14 and CZ-15) (2 cars) 6 Dbl. Bedrooms, 10 Roomettes, via C. B. & Q.-D. & R. G. W.-W. P.
Standard Sleeper between Chicago and San Francisco (CZ-16) 6 Dbl. Bedrooms, 5 Compartments, via C. B. & Q., D. & R. G. W., W. P.
Vista Dome Chair Cars between Chicago and San Francisco (CZ-20, CZ-21 and CZ-22) (3 cars) via C. B. & Q.-D. & R. G. W.-W. P.
Vista Dome Buffet Lounge between Chicago and San Francisco via C. B. & Q.-D. & R. G. W.-W. P. (Lounge for all passengers: Vista Dome for sleeping car passengers) (Buffet and sandwich service 6:00 A. M. to 10:00 P. M.)
Diner between Chicago and San Francisco, via C. B. & Q.-D. & R. G. W.-W. P.



See page 4 for explanation of references.

Table 2

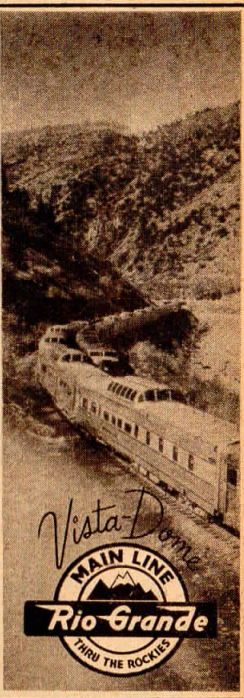
ROYAL GORGE ROUTE

DENVER • COLORADO SPRINGS • PUEBLO • CANON CITY • SALIDA • GLENWOOD SPRINGS

Table with columns for No. 3, No. 1, Miles, STATIONS, Elevation, No. 2, No. 4, and No. 3. Includes station names like DENVER, COLO., PUEBLO, and GLENWOOD SPRINGS, COLO.

JUST SAY — "CHARGE IT"

Rio Grande travelers can enjoy charge account convenience for their transportation needs by obtaining a Rail Travel Credit Card.



FREE BAGGAGE ALLOWANCE When you travel by rail, no need to wrestle with heavy bags. Just check them through and they'll ride in the baggage car.

ROYAL GORGE ROUTE

GLENWOOD SPRINGS • GRAND JUNCTION • PROVO • SALT LAKE CITY • OGDEN

Table 2

Table with columns for No. 1, Miles, STATIONS, Elevation, No. 2, and No. 1. Includes station names like GLENWOOD SPRINGS, COLO., GRAND JUNCTION, COLO., and OGDEN, UTAH.

REFERENCE NOTES

- * Daily
a Stops on flag to receive pay passengers for points on Mo. Pac. and discharge pay passengers from connections at Denver.
b Stops to discharge pay passengers received from connections at Pueblo.

EQUIPMENT

(All equipment is air-conditioned)

Nos. 1 and 2—THE ROYAL GORGE (Diesel Power)

Grill-Lounge between Denver and Grand Junction. (Diner-Lounge between Grand Junction and Salt Lake City in Trains 7 and 8)

Standard sleeper between Denver and Salt Lake City (D-22 westbound) (D-10 eastbound) 10 Sections. 2 Compartments, 1 DR.

Vista Dome Chair Car between Denver and Salt Lake City. (In trains 7 and 8 west of Grand Junction)

Nos. 3 and 4—THE COLORADO EAGLE (Streamlined—Diesel Power)

Diner-Lounge between Denver and St. Louis. Standard sleeper between Denver and St. Louis (31 eastbound) (111 westbound) 14 roomettes, 2 Dbl. BR, 1 DR.

Standard Sleeper between Denver and St. Louis (32 eastbound) (112 westbound) 6 Sections, 6 roomettes, 4 Dbl. BR.

Standard Sleeper between Denver and Wichita (34 eastbound) (114 westbound) 8 Sections, 1 DR., 3 Dbl. BR.

Planetarium Chair Car and Chair Cars (3 Cars) between Denver and St. Louis.

PLAN YOUR TRIP IN ADVANCE—

It is not necessary to wait until date of departure to purchase rail tickets and Pullman accommodations. All one-way and round-trip rail tickets are good for a certain period of time.

NOTE B: D&RGW passenger trains originate and terminate at Salt Lake City. Tickets reading via D&RGW between Salt Lake City and Ogden will be honored on Union Pacific trains. See page 12 for schedules.

Now, the see-all Vista-Dome car adds thrilling perspective to make the Royal Gorge a brand new travel delight.

BAGGAGE INSURANCE covering personal effects and baggage for an entire trip, may be purchased at principal Rio Grande ticket offices and baggage counters. Consult agent for particulars.

MAP OF THE DENVER & RIO GRANDE WESTERN RAILROAD AND CONNECTIONS



FREIGHT SERVICE ONLY
UTAH LINES (Continued)

Table 23—GOSHEN VALLEY BRANCH
Table with columns: Miles, STATIONS, Freight Service only.

Table 24—SUGAR HOUSE SPUR
Table with columns: Miles, STATIONS, Freight Service only.

Table 25—PROVO CANYON BRANCH
Table with columns: Miles, STATIONS, Freight Service only.

Table 26—SUNNYSIDE BRANCH
Table with columns: Miles, STATIONS, Freight Service only.

Table 27—PLEASANT VALLEY BRANCH
Table with columns: Miles, STATIONS, Freight Service only.

Table 28—BINGHAM-GARFIELD BRANCHES
Table with columns: Miles, STATIONS, Freight Service only.

PROTECT YOUR LUGGAGE Identify Your Baggage by Placing Your Name and Address Inside and Outside BUY ROUND TRIP TICKETS AND SAVE TRAVEL ON CREDIT CONSULT AGENT

CONDENSED SCHEDULES VIA CONNECTING LINES

BURLINGTON LINES, COLORADO & SOUTHERN-FT. WORTH & DENVER RYS., MISSOURI PACIFIC R. R., ROCK ISLAND LINES, SOUTHERN PACIFIC COMPANY, UNION PACIFIC R. R., WESTERN PACIFIC R. R.
Table with columns: Time, Station, Time, Station, Time, Station, Time, Station.

Reference Notes: * Daily. MST Mountain Standard Time. CST Central Standard Time. PST Pacific Standard Time. Joint service via G.N.-N.P.-U.P. Leave Salt Lake City and San Francisco Sunday, Wednesday and Friday. Light face figures A. M. Bold face figures P. M.

SALT LAKE CITY visitors are welcome to the free organ recitals presented daily, except Sunday, at 12 noon, by celebrated artists in the great domed Mormon Tabernacle, famed for its superb acoustics. Sunday recitals at 4:00 P.M. The nationwide radio broadcast of the Mormon Tabernacle Choir and Organ is presented each Sunday at 9:00 A.M.

YOU CAN'T LOSE WITH AMERICAN EXPRESS TRAVEL CHEQUES
The safe way to carry money, Travelers Cheques are as easily spendable as cash. If lost or stolen before second signature is affixed, full amount is refunded. Buy at any Rio Grande Ticket Office.

RAIL AND PULLMAN FARES

The fares shown below are those in effect August 1, 1954, and do not reflect any increase which may be authorized at a subsequent date. These fares are quoted as information only, are subject to change without notice, and they do not include 10% Federal and 2% Utah taxes.

RAILROAD FARES, One-Way Pullman Fares, GRAND JUNCTION TO, DENVER TO, GLENWOOD SPRINGS TO, SALT LAKE CITY TO, SAN FRANCISCO TO
Table with columns: City, One-way, 6 Months Round-trip, Lower Berth, Seat Fare Day Travel.

FARES FOR OTHER STANDARD PULLMAN ACCOMMODATIONS

Table with columns: WHERE LOWER BERTH FARE IS, Upper berth fare will be, Roomette fare for one person will be, Bedroom Fare for one person will be, Compartment Fare for one person will be, Drawing Room Fare for one person will be.

RAILWAY EXPRESS AGENCY
swift, safe, sure!
America's fast trains will carry your shipment when you specify Railway Express.

TRAVELERS AID
is a social service, supported by voluntary contributions, specializing in assistance to people away from home. Information, direction and help with any type of personal problem are available to all passengers.
Look for the blue and white lamp in major terminals.

Exclusive Space Occupancy by One Person: One and one-fourth railroad tickets must be purchased for exclusive use of drawing room; one and one-tenth tickets for compartment; one adult rail ticket for bedroom or roomette. Applies via direct route.

Yes, Rio-Grande has the **FAMILY FARE PLAN**

Take the whole family by train and **SAVE**.
Here's how it works:

On one-way trips, one parent pays full fare (either coach or Pullman); other parent and all children from ages 12 through 21 pay one-half regular fare; children 5 through 11 pay one-fourth fare; children under five ride free.

On round trips, one parent pays the full round trip fare; other parent and children 12 through 21 pay the usual one-way fare; children 5 through 11 pay half the usual one-way fare; children under five ride free.

These family fares are good on all Rio Grande trains. Trips must start on Mondays, Tuesdays or Wednesdays.

TRAVEL ON CREDIT

Rio Grande honors Rail Travel Credit Cards, providing the extra convenience of "charge account travel." Make application for credit at your nearest Rio Grande office (see page 16).

Family Fares Good on These Trains:

CALIFORNIA ZEPHYR - ROYAL GORGE - PROSPECTOR
MOUNTAINEER - COLORADO EAGLE - YAMPA VALLEY MAIL



DENVER & RIO GRANDE WESTERN RAILROAD

INFORMATION

SPECIAL NOTICE. The time shown in this folder is subject to change without notice; is that at which trains may be expected to arrive at and depart from the several stations, but their arrival or departure at the time stated is not guaranteed. This Company reserves the right to discontinue trains, change schedules, and substitute equipment, and will not be responsible for any delay or other deviation from conditions outlined in this time table.

ADJUSTMENT OF FARES. Should any difference arise between yourself and the conductor, pay the fare requested, take receipt for the amount, and refer the matter to the Passenger Traffic Manager, Denver, Colo., for adjustment.

CHILDREN under 5 years of age, free, when accompanied by parent or guardian; 5 years of age and under 12, one-half fare; 12 years of age or over, full fare.

STOPOVERS are permitted at any point enroute where trains are scheduled to stop, within limit of ticket.

FREE SIDE TRIP PUEBLO TO COLORADO SPRINGS OR DENVER AND RETURN. Side trip tickets from Pueblo to Colorado Springs and return will be furnished upon application, westbound to Mo. Pac. conductor or eastbound to D. & R. G. W. conductor into Pueblo, to holders of one-way and round-trip tickets reading over the Mo. Pac., sold at stations east of and including Geneseo, Kan., destined to Salt Lake City, Utah, or points beyond, or the reverse. Side trip tickets Pueblo to Denver and return are furnished only in connection with round-trip tickets via the Mo. Pac. sold at and destined to points shown above. The side trip coupons may also be included in original ticket at the time of purchase or secured upon presentation of the through tickets within their limits to UNION DEPOT TICKET AGENT IN PUEBLO, COLO.

FREE SIDE TRIP DENVER TO COLORADO SPRINGS AND RETURN. Arrangements are in effect whereby passengers may obtain free side trips Denver to Colorado Springs and return on certain tickets without additional charge. Side trip tickets may be included in original ticket, or obtained upon presentation of through round-trip excursion ticket, within limit, at Denver Union Station, or any C. B. & Q., C. R. I. & P. or U. P. ticket office at Denver.

CHOICE OF ROUTES. Tickets reading via D. & R. G. W. between Denver, Colorado Springs or Pueblo and Salt Lake City or Ogden will be honored either via Canon City and the Royal Gorge or via the Moffat Tunnel Route (Dotsero Cut-off), except as otherwise provided by tariff.

REDEMPTION OF TICKETS. For refund on partially used or wholly unused D. & R. G. W. rail tickets, consult local ticket agent, or mail tickets, with explanation of non-use to H. F. Eno, Passenger Traffic Manager, D. & R. G. W. R. R., Room 101 Rio Grande Bldg., 1531 Stout St., Denver 2, Colo.

BEFORE BOARDING TRAINS ask the ticket agent, brakeman, or conductor whether the train stops at the station to which you may be ticketed. There are stations at which some trains do not stop.

STOPPING TRAINS ON SIGNAL. Where trains are scheduled to stop only on signal, passengers on trains must give advance notice to conductor, and persons intending to board trains must advise agent to that effect, in order that necessary arrangement may be perfected.

TICKET HONORING. All classes of tickets will be honored on all trains, except 20-day and 25-day excursion, Drivers, Caretakers and Banana Messenger tickets will not be honored on the California Zephyr, Trains 17 and 18. **EXCEPTION:** Drivers tickets will be honored on all trains, except on the California Zephyr, Trains 17 and 18, to regular or flag stops (not conditional stops) except that Train No. 1 will stop at any station west of Pueblo where conditional stops are authorized, to discharge passengers holding Drivers tickets.

BAGGAGE. Personal baggage consisting of wearing apparel, toilet articles (except liquids) and personal effects in actual use, and necessary for the use, comfort and convenience of the passenger while on the journey, may be checked in baggage service.

Money, jewelry, silverware, negotiable papers and like valuables, liquids, fragile or perishable articles, radios, household goods and any article intended for others or for sale, must not be enclosed in baggage to be checked. Carriers will not be responsible for such articles.

Passengers are urged to check all baggage except that actually needed for use enroute. They are also urged to check baggage in advance so that it may be forwarded on a preceding train. Every effort will be made to facilitate handling of baggage but the railroad does not guarantee its forwarding on the same train with the owner nor the time of its arrival at destination.

Passengers may check without additional charge 150 pounds of baggage not exceeding \$100 in value on each adult ticket and 75 pounds not exceeding \$50 in value on each child's half-fare ticket. Around the World or Trans-Pacific passengers may check without additional charge 350 pounds not exceeding \$100 in value on each adult ticket and 175 pounds not exceeding \$50 in value on each child's half-fare ticket.

Each passenger has the privilege of declaring a higher value than the free allowance on his baggage at time of checking. A nominal charge will be made for each \$100, or fraction thereof, declared in excess of the free allowance. The value of baggage checked on one ticket is limited to \$2,500. No single piece of baggage exceeding 300 pounds in weight, 72 inches in greatest dimension, or \$2,500 in value, will be accepted.

Bicycles, baby carriages, guns (not small firearms), and similar articles enumerated in the tariff, when used in connection with the journey, may be checked and included in weight and value of passenger's baggage. The maximum liability on such articles is deemed by the carriers to be not in excess of \$25 unless a higher value is separately declared and paid for at time of checking, on each shipment of such articles for each \$100, or fraction thereof, of additional value declared.

Each piece of baggage should be marked or tagged with passenger's name and address and the passenger's name and permanent address should be placed inside of each piece of baggage whether it is checked or carried on the train.

Storage charges will be assessed on baggage not claimed within 24 hours after its arrival at destination.

Dogs and other household pets may be checked in baggage service subject to tariff rules. Dogs may be checked on leash when securely muzzled and provided with close fitting harness or collar, but should be in crates or other suitable containers, and claimed immediately upon arrival at destination. When handled on trains without train baggage-men, they will be moved only when crated and then only at owner's risk. Carriers do not assume obligation to store or care for dogs at stations. Passengers must attend to feeding and watering dogs enroute and at stations. Passengers should inform themselves regarding quarantine regulations before checking dogs or other animals. Small dogs and other animals, when in baskets or other containers, or on leash and muzzled, may be taken into private room accommodations of sleeping cars.

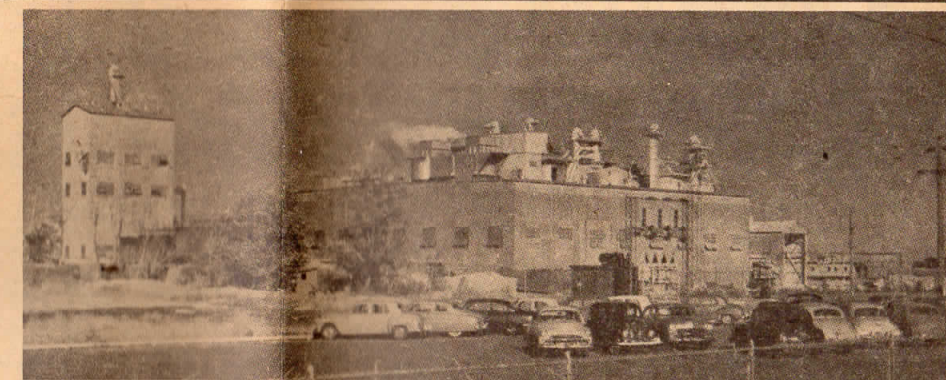
Baggage checked to a station having no agent must be called for at the baggage car by owner upon reaching such station and duplicate checks surrendered to train baggage-man; otherwise baggage will be carried to first station beyond, where there is an agent.

Parcel rooms and parcel checking lockers are maintained in station waiting rooms at all important points.

LOST ARTICLES. Agents will assist in the recovery of lost articles. Passengers should not only give full description of the property, but should state date of loss, number of train and whether left in coach or Pullman car. All lost articles found in coaches on this line are forwarded to J. H. Tanner, Assistant Passenger Traffic Manager, Denver, Colo., and those found in sleeping cars are forwarded to The Pullman Co. Address the District Superintendent, The Pullman Company, at Denver, Colo., or Salt Lake City, Utah. No responsibility is assumed for unchecked articles left in stations or cars.

YOUR INDUSTRIAL OPPORTUNITY "The Rocky Mountain Empire"

● The development of the natural resources of Colorado and Utah, coupled with equable climate, a stable labor market, attractive living conditions, exceptional labor recreational facilities and a dependable transportation system geared to the smooth and uninterrupted flow of materials from producer to processor to consumer, is fast bringing

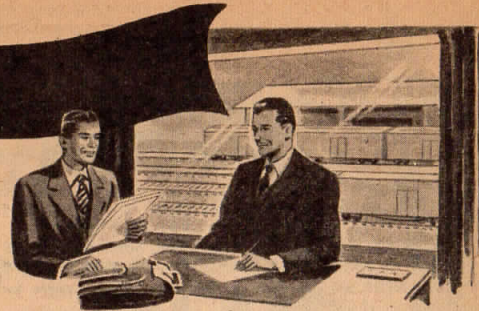


Filtrol Corporation - Salt Lake City, Utah

these two states to the forefront of industrial recognition. All inquiries with respect to industrial opportunities in such development will be promptly and confidentially handled.

E. L. BEARDSLEY
Director of Industrial Development
The Denver & Rio Grande Western RR Co.
1531 Stout Street, P. O. Box No. 2040
Denver 1, Colorado

PERSONALIZED SERVICE



Rio Grande passenger and freight representatives, listed below, will welcome an opportunity to assist you with any travel or shipping problems.

- ALAMOSA, COLO.**—Rio Grande Freight Depot—Phone 210
R. W. CLARK, District Freight & Passenger Agent.
- ATLANTA 3, GA.**—1521 Healey Bldg.—
57 Forsyth St. N. W.—Lamar 4831
R. E. KNIGHT, General Agent.
- BOSTON 16, MASS.**—411 Little Bldg.—
80 Boylston St.—Liberty 2-9891
C. O. TOBIAS, General Agent.
- CHICAGO 3, ILL.**—Suite 2321 Bankers Building—
105 West Adams St.—Randolph 6-7445
G. C. CLEGG, Eastern Traffic Manager.
J. B. WILLIAMS, Assistant Traffic Manager.
C. J. DOMBROW, General Passenger Agent.
W. H. MESTER, City Passenger Agent.
G. L. NICOLIN, General Perishable Agent.
D. J. LEWIS, Commercial Agent.
J. A. BURKE, Commercial Agent.
B. F. GALLAGHER, Traveling Freight & Passenger Agent.
M. L. COLBY, Traveling Freight & Passenger Agent.
R. W. BAILEY, Traveling Freight & Passenger Agent.
S. E. DAVIS, City Freight Agent.
W. P. MENARD, City Freight Agent.
- CINCINNATI 2, OHIO**—1431 Enquirer Bldg.—
617 Vine St.—Parkway 3212
A. C. DICK, General Agent.
E. H. NELSON, Traveling Freight & Passenger Agent.
T. D. ODWALT, Traveling Freight & Passenger Agent.
- CLEVELAND 13, OHIO**—509 Terminal Tower Building—
50 Public Square—Cherry 1-7386
W. M. DODDS, General Agent.
A. S. EATON, District Freight & Passenger Agent.
- COLORADO SPRINGS, COLO.**—
Rio Grande Passenger Depot—Melrose 4-4857
R. L. TAYLOR, General Agent.
- CRAIG, COLO.**—Rio Grande Freight Depot—Phone 340
B. F. MOORE, District Freight & Passenger Agent.
- DALLAS 1, TEXAS**—411 Southland Life Building
1416 Commerce St.—Phone Randolph 6322
J. B. LATIMER, General Agent.
T. J. BACON, District Freight & Passenger Agent.
- DENVER 2, COLO.**—
Rio Grande Bldg.—1531 Stout St.—AComa 2-5533
City Ticket Office—Room 101—Main Floor
B. E. GREGORY, General Passenger Agent.
H. M. COX, City Ticket Agent.
C. L. RAHNE, City Passenger Agent.
D. G. FRAZIER, City Passenger Agent.
T. D. JOHNSON, Depot Passenger Agent.
Freight Department—Room 100—Main Floor
W. S. MOORE, General Agent, Freight Department.
C. M. WILDT, Commercial Agent.
A. L. BURSON, City Freight Agent.
A. D. COX, City Freight Agent.
H. C. McVEAN, Traffic Representative.
D. J. IZETT, Livestock Agent.
- DETROIT 2, MICH.**—5-157 General Motors Bldg.—
3044 West Grand Blvd.—Trinity 5-3025
P. O. SPURGEON, General Agent.
W. A. SIEBERT, Traveling Freight & Passenger Agent.
J. H. KRESS, Traveling Freight & Passenger Agent.
- EUGENE, ORE.**—230 Ardel Offices
33 10th Avenue East—Phone 5-8535
J. T. HULL, General Agent.
R. L. BURNETT, Traveling Freight Agent.
- FRESNO 21, CAL.**—207 T. W. Patterson Bldg.—
2014 Tulare St.—Phone 4-3290
M. E. PYEATT, General Agent.
C. E. MILLS, Traveling Freight Agent.
- GRAND JUNCTION, COLO.**—
Rio Grande Freight Depot—Phone 3021
W. J. MOORE, General Agent.
- KANSAS CITY 6, MO.**—524 Railway Exchange Bldg.
705 Walnut St.—Victor 5520
W. D. FERNALD, General Agent.
J. W. SAMPLE, District Freight & Passenger Agent.
K. N. HAHNE, Traveling Freight & Passenger Agent.
- LOS ANGELES 14, CAL.**—724 Pacific Mutual Bldg.
523 West 6th St.—Madison 9-2156
R. E. DAVIS, General Agent.
O. V. HOWARD, District Freight & Passenger Agent.
L. S. BRISTOL, City Freight Agent.
E. D. BURKE, City Freight Agent.
R. E. PORT, City Freight Agent.
- MINNEAPOLIS 2, MINN.**—360 Rand Tower
527 Marquette Ave.—Atlantic 7888
C. W. CAMPBELL, General Agent.
- NEW YORK 36, N. Y.**—500 Fifth Ave., Room 220.
Chickering 4-7515
V. A. FARRELL, Assistant Traffic Manager.
W. C. RUBIEN, District Passenger Agent.
G. L. KENNY, Commercial Agent.
C. J. DOBOL, Perishable Freight Agent.
J. W. WESTLAKE, Traveling Freight & Passenger Agent.
J. R. MELANSON, Traveling Freight & Passenger Agent.
T. V. SIMMONS, City Freight Agent.
- OAKLAND 12, CAL.**—514 Central Bank Bldg.—
14th & Broadway—Glencourt 1-4925
M. E. CHASE, General Agent.
W. B. WAGNER, City Freight Agent.
T. M. SAFFOLD, City Freight Agent.
- OGDEN, UTAH**—Rio Grande Freight Depot
130 24th Street—Phone 3-3325
R. B. WILLIAMS, General Agent.
- OMAHA 2, NEB.**—
512 Grain Exch. Bldg., 19th & Harney—Jackson 5100
J. D. KEY, General Agent.
R. G. SCHWARTZ, Commercial Agent.
O. F. WAGNER, Traveling Freight & Passenger Agent.
J. G. FARRIS, Traveling Freight & Passenger Agent.
- PHILADELPHIA 7, PA.**—1535 Phila. Saving Fund Bldg.
12 South 12th St.—Walnut 2-2323
J. J. O'DONNELL, General Agent.
- PITTSBURGH 22, PA.**—1410 Oliver Bldg.
535 Smithfield St.—Atlantic 1-2766
F. E. HILL, General Agent.
J. F. MALONEY, Traveling Freight & Passenger Agent.
R. W. LUSIN, Traveling Freight & Passenger Agent.
- PORTLAND 4, ORE.**—417 Pacific Bldg.
520 S. W. Yamhill St.—Beacon 6104
W. M. KIRKPATRICK, Assistant Traffic Manager.
N. W. VORPAHL, Traveling Freight & Passenger Agent.
- PROVO, UTAH**—Rio Grande Freight Depot
6th South and 3rd West—Phone 240
S. D. BURNSIDE, District Freight & Passenger Agent.
- PUEBLO, COLO.**—Room 12, Union Depot
Phones 5510, 6842
J. M. JENSEN, Assistant Traffic Manager.
E. W. SANFORD, District Freight & Passenger Agent.
W. H. MOORE, Traveling Freight & Passenger Agent.
- RENO, NEV.**—98 Sunnyside Drive—
Phone 2-1373
J. B. HUNTER, General Agent.
- SACRAMENTO 14, CAL.**—926 Forum Bldg.
1107 Ninth Street—Phone Hudson 4-4432
C. R. LENNIG, General Agent.
H. H. HILL, Traveling Freight & Passenger Agent.
- ST. LOUIS 3, MO.**—
1218 Olive St., Suite 1210—Garfield 1-3670
H. A. ROBERTSON, Assistant Traffic Manager.
J. M. SINCLAIR, District Freight & Passenger Agent.
H. A. DEHNE, Commercial Agent.
J. L. WELLS, Traveling Freight & Passenger Agent.
- SALT LAKE CITY 1, UTAH**—
24 South Main Street—Phone 4-6551
H. J. RIGGERT, Assistant Traffic Manager.
D. P. HEINER, General Agent, Passenger Dept.
R. S. LAWRENCE, General Agent, Freight Dept.
G. W. BUNNER, City Passenger Agent.
H. L. JOHNSON, City Ticket Agent.
J. C. WALDIE, Depot Passenger Agent.
J. L. HILL, Traveling Freight Agent.
J. E. BERRY, City Freight Agent.
CECIL PEARSON, City Freight Agent.
P. G. SEAL, City Freight Agent.
- SAN FRANCISCO 5, CAL.**—291 Monadnock Bldg.—
681 Market St.—Garfield 1-2688
C. J. HARBEKE, Western Traffic Manager.
J. K. SPEIGHT, General Agent.
R. G. DE GUIRE, District Passenger Agent.
F. D. LUCAS, Commercial Agent.
M. W. WELDON, Commercial Agent.
E. K. YAEGER, Traveling Freight & Passenger Agent.
J. McMILLEN, Traveling Freight & Passenger Agent.
G. A. CRONIN, City Freight Agent.
A. F. HOLMAN, City Freight Agent.
R. A. HANSEN, City Freight Agent.
J. C. WILDERMUTH, City Freight Agent.
- SEATTLE 1, WASH.**—503 White-Henry-Stuart Bldg.
4th & University—Eliot 8482
C. B. LOWRY, Commercial Agent.
- WASHINGTON 5, D. C.**—535 Shoreham Bldg.
15th & H Sts. N. W.—Executive 3-0373
J. L. HENNING, General Agent.
P. P. MAGUIRE, Traveling Freight & Passenger Agent.

F. C. HOGUE, Vice President—Traffic

O. J. GRIMES, General Traffic Manager

W. M. CAREY, General Freight Traffic Manager

H. F. ENO, Passenger Traffic Manager

Rio Grande Building, 1531 Stout Street, Denver, Colorado



Ability and Desire to Serve

- The Direct Central Transcontinental Route to and from the Pacific Coast through Salt Lake City and Ogden; the Royal Gorge route via the Pueblo gateway; the Moffat Tunnel route via the Denver gateway.
- High speed roadway Centralized Traffic Control and Automatic Electric Block Signals Diesel-electric power cab-to-caboose and train-to-station radio new, modern rolling stock a well-equipped, high-capacity railroad plant operated by skilled personnel.

Heavy Duty Rio Grande Roadway on the Main Line through the Rockies just west of Glenwood Springs, Colorado, with Mt. Sopris in the background.

Ship it *Rio Grande*

