



**ERIE
RAILROAD
SYSTEM
TIME TABLES**

**SCENIC ROUTE
BETWEEN
NEW YORK
BUFFALO
CLEVELAND
CHICAGO**



**ERIE
RAILROAD
SYSTEM
TIME TABLES**

**SCENIC ROUTE
BETWEEN
NEW YORK
BUFFALO
CLEVELAND
CHICAGO**

**A New Series of
MARVELOUS ERIE TOURS
and Special Round Trip Fares to
A CENTURY OF PROGRESS
CHICAGO, 1934**

DE LUXE TOURS

Eight Days—\$89.66 from New York
Proportionately lower from other stations

From stations New York to Hornell (Going Wednesdays and Sundays) Going via Buffalo and Great Lakes Steamer June 27 to September 2, inclusive. Returning all rail. Fare includes transportation, transfers, meals and Pullman accommodations on trains, meals and berth on steamer, lodging at Palmer House, Gray Line World's Fair Tour, general tour of Chicago, three admissions to Fair. This tour may be reversed with one day less at the Fair at cost as low as \$84.94.

ALL-RAIL TOURS

Five Days—\$61.16 from New York
Proportionately lower from other stations

From stations New York to Akron (Going Tuesdays and Saturdays). (From Akron Wednesdays and Sundays.) Going and returning by rail, May 26 to October 27, inclusive. (From Akron May 27 to October 28, inclusive.) Fare covers transportation, transfers, meals and Pullman accommodations on trains, lodging at Palmer House, Gray Line World's Fair Tour, also general tour of Chicago, three admissions to Exposition.

This tour arrives in Chicago early Wednesday or Sunday mornings and returns Friday or Tuesday evenings. It may also be taken on days other than Tuesdays and Saturdays at slightly higher cost.

ALL-RAIL TOURS

Five Days—\$64.50 from New York
Proportionately lower from other stations

From stations New York to Corning, and Meadville to Marion (Going Tuesdays and Saturdays) Going and returning by rail June 16 to September 29, inclusive (from stations Elmira and West June 19 to September 29), with evening arrival in Chicago and evening departure from Chicago. Fare includes transportation, transfers, meals and Pullman accommodations on trains, lodging at Palmer House, Gray Line World's Fair Tour, also general tour of Chicago, three admissions to Exposition.

This tour may also be taken on days other than Tuesdays and Saturdays from June 17 to September 28 also from Elmira and Corning and Meadville to Marion on September 30 at slightly higher cost.

ALL-RAIL ECONOMY COACH TOURS

Five Days—\$35.44 from New York
Proportionately lower from other stations

From stations New York to Marion (Every day May 25 to Oct. 27) Going and returning in modern comfortable air conditioned coaches May 25 to October 27, inclusive. Fare includes transportation, transfers, lodging at Hotel Morrison, three admissions to the Exposition.

This tour arrives in Chicago in the morning and departs the third evening after arrival.

ALL-RAIL ECONOMY COACH TOURS

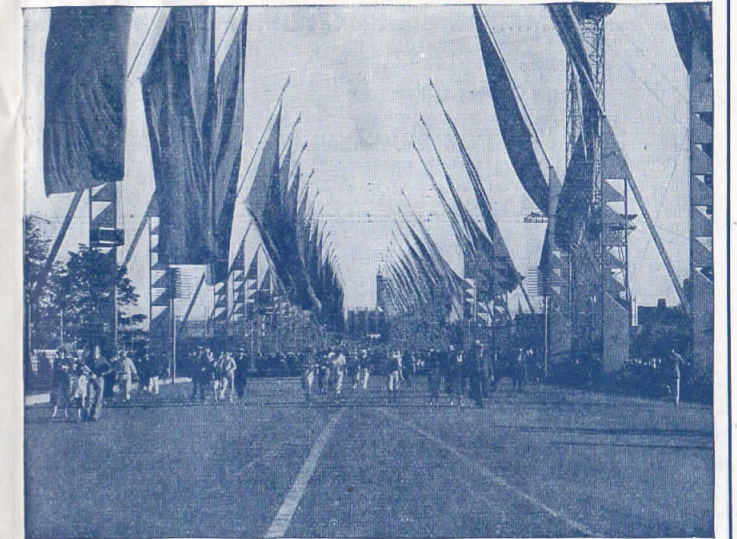
Four Days—\$34.88 from New York
Proportionately lower from other stations

From stations New York to Corning and Meadville to Marion. Going and returning in modern comfortable air conditioned coaches from New York to Binghamton daily June 16 to September 29, inclusive, from Elmira and Corning and Jamestown to Marion inclusive, June 17 to September 30, inclusive.

Fare includes transportation, transfers, lodging at Hotel Morrison, two admissions to the Fair.

One may return on this tour the third morning after arrival, giving three nights and two full days at the Fair at slightly higher cost.

FOR ALL DETAILS APPLY TO ANY ERIE RAILROAD TICKET AGENT



The Avenue of Flags makes an imposing spectacle as dozens of gayly colored banners float above the throng.

Special attractive tours to the Fair from stations Marion to Huntington have also been arranged. Some are Sunday tours, others are daily, ranging from one to five days. All afford a maximum of pleasure and sightseeing in time allotted.

In addition to the above tours there are attractive Individual Round-Trip Fares and Round-Trip Party Fares going May 22 to October 30 with stopover privileges at Buffalo, Jamestown and other points. These fares are in effect from stations New York to Huntington. Here are some typical examples:

INDIVIDUAL ROUND-TRIP FARES

From	Limit 31 Days (Sold Tuesdays and Saturdays)	Limit 16 Days (Sold Tuesdays and Saturdays)	Limit 16 Days (Coaches Only) (Sold Daily)
New York	\$46.05	\$31.00	\$25.60
Binghamton	37.00	24.90	20.55
Elmira	33.90	22.85	18.85
Corning	32.95	22.20	18.30
Olean	27.90	18.85	15.50
Jamestown	25.05	16.95	13.95
Meadville	23.55	15.95	13.10
Youngstown	21.95	14.90	12.20
Akron	18.40	12.55	10.25
Marion	14.45	9.90	8.05
Huntington	7.75	5.40	4.30

ROUND-TRIP PARTY FARES from stations New York to Huntington, covering 25, 50 or 100 or more people and with limit of eleven days, will round out the most attractive series of fares to Chicago that we have ever been able to offer.

TABLE OF CONTENTS

Equipment of Through Trains... Page 5, 6
General Information... 31, 32
Standard of Time
Holidays
Fares Paid on Trains
Adjustment of Fares
Sleeping and Parlor Car Reservations
Baggage Regulations
Articles left on Trains
Equipment of Local Trains... 7, 8, 9, 10
Equipment of Detroit, Toledo, Cleveland, Youngstown and Pittsburgh Trains... 17, 18
Erie Railroad Map... 19, 20, 21, 22
Sleeping and Parlor Car Fares... 31, 32
One-way Rail Fares... 31, 32
Reference Marks and Notes... 33, 34
Traffic Department Representatives... 35, 36
Ticket Offices and Passenger Stations in Principal Cities... 37
Train Service
Condensed Schedule of Through Trains... 5, 6
New York—Binghamton... 7, 8, 9, 10
Binghamton—Meadville... 11, 12
Meadville—Huntington... 13, 14
Huntington—Chicago... 15, 16
New York—Buffalo... 15
Detroit—Toledo—Cleveland—Youngstown—Pittsburgh... 17, 18
New York—Chautauqua... 23
Chautauqua—Akron—Chicago... 23
New York—Kenosha Lake—Jeffersonville... 26
New York—Monticello... 24
New York—Salamanca—Bradford... 25
New York—Meadville—Oil City... 29
Bradford—Salamanca—Cleveland—Chicago... 23 to 29, inc.
Branch Line Service
Hudson & Manhattan R. R. Service... 30
Ferry Schedule... 30
Chautauqua Lake Service... 23

STATIONS ON ERIE RAILROAD

Numerals Opposite Station Names Indicate Time Table Numbers.

Table listing stations on the Erie Railroad with corresponding time table numbers. Includes stations like Adrian, Akron, Alton, Albany, Alden, etc.

STATIONS ON ERIE RAILROAD—Concluded

Continuation of the Erie Railroad station list, including stations like Hanks, Harriman, Harrods, Hawley, Hegewisch, etc.

TABLE 1

CONDENSED TABLE OF THROUGH TRAINS NEW YORK AND BUFFALO, CLEVELAND AND CHICAGO

(FOR LOCAL TRAINS AND INTERMEDIATE TIME OF THROUGH TRAINS SEE LOCAL TABLES)

Table 1: WEST BOUND THE ERIE LIMITED TRAIN NO. 1—DAILY New York—Buffalo—Chicago. Lists departure times for New York, Buffalo, and Chicago.

Table 1: EAST BOUND THE ERIE LIMITED TRAIN NO. 2—DAILY Chicago—Buffalo—New York. Lists departure times for Chicago, Buffalo, and New York.

Table 1: THE LAKE CITIES TRAIN NO. 5—DAILY New York—Buffalo—Cleveland. Lists departure times for New York, Buffalo, and Cleveland.

Table 1: THE LAKE CITIES TRAIN NO. 6—DAILY Cleveland—Buffalo—New York. Lists departure times for Cleveland, Buffalo, and New York.

Table 1: PACIFIC EXPRESS TRAIN NO. 7—DAILY New York—Jamestown—Chicago. Lists departure times for New York, Jamestown, and Chicago.

Table 1: ATLANTIC EXPRESS TRAIN NO. 8—DAILY Chicago—Jamestown—New York. Lists departure times for Chicago, Jamestown, and New York.

Table 1: SOUTHERN TIER EXPRESS TRAIN NO. 9—DAILY New York—Binghamton—Elmira—Salamanca. Lists departure times for New York, Binghamton, Elmira, and Salamanca.

Table 1: SOUTHERN TIER EXPRESS TRAIN NO. 10—DAILY Salamanca—Elmira—Binghamton—New York. Lists departure times for Salamanca, Elmira, Binghamton, and New York.

Table 1: TRAIN NO. 27—DAILY New York—Binghamton—Elmira—Hornell. Lists departure times for New York, Binghamton, Elmira, and Hornell.

Table 1: SOUTHERN TIER EXPRESS TRAIN NO. 10—DAILY Salamanca—Elmira—Binghamton—New York. Lists departure times for Salamanca, Elmira, Binghamton, and New York.

For Explanation of Reference Marks and Notes, See Pages 33 and 34.

TABLE 2 WESTBOUND

NEW YORK—BINGHAMTON

Hudson and Manhattan Tube Trains operate to and from Erie Railroad Station in Jersey City. Fare, downtown, 6 cents; uptown, 10 cents.

Table with columns for Miles from New York, Eastern Standard Time, and various train numbers (51, 53, 41, 55, 57, 1, 59, 61, 45, 27, 63, 65, 67, 259, 69, 5, du 7, 73, 9, 251, 255, 701, 711, 713, 703, 715, 705). Includes notes like 'No Baggage Carried on this Train' and 'Runs Saturdays only, June 16th to Sept. 22nd, inc.'

LOCAL PARLOR AND CLUB CAR EQUIPMENT.

No. 27—Daily Coaches... New York to Hornell. No. 45—Runs May 29th only. Erie Parlor Car... New York to Deposit. Coaches... New York to Port Jervis. No. 63—THE TUXEDO—Ex. Sundays and Holidays. Erie Parlor Car... New York to Port Jervis. Coaches... New York to Port Jervis.

No. 67—Ex. Saturdays, Sundays and Holidays. Erie Club Car... New York to Middletown. Coaches... New York to Middletown. No. 251—Saturdays only. Erie Parlor Car... New York to Harriman. Coaches... New York to Harriman.

TABLE 3 EASTBOUND

BINGHAMTON—NEW YORK

Hudson and Manhattan Tube Trains operate to and from Erie Railroad Station in Jersey City. Fare downtown, 6 cents; uptown, 10 cents.

Table with columns for Eastern Standard Time, various train numbers (50, 52, 6, 54, 206, 56, 58, 30, 60, 62, 64, 44, 2, 66, 18, 38, 68, 8, 10, 700, 702, 704, 726, 706, 708), and notes like 'No Baggage Carried on this Train' and 'Runs Saturdays only, June 16th to Sept. 22nd, inc.'

LOCAL PARLOR AND CLUB CAR EQUIPMENT

No. 30—Except Sunday. Erie Club Car... Middletown to New York. Coaches... Port Jervis to New York.

No. 38—(Runs May 30, only). Erie Parlor Car... Deposit to New York. Coaches... Deposit to New York. No. 44—Daily. Coaches... Susquehanna to New York.

No. 56—THE TUXEDO—Except Sundays and Holidays. Erie Parlor Car... Port Jervis to New York. Coaches... Port Jervis to New York.

TABLE 4 WESTBOUND BINGHAMTON—MEADVILLE EASTBOUND

Table 4: Binghamton-Meadville schedule. Columns include Eastern Standard Time (du 7, 1, 27, 5, 9) and Central Standard Time (2, 18, dt 8, 10, 6). Rows list stations from New York to Chicago with arrival and departure times.

TABLE 5 WESTBOUND MEADVILLE—HUNTINGTON EASTBOUND

Table 5: Meadville-Huntington schedule. Columns include Eastern Standard Time (du 5, 7, 1) and Central Standard Time (6, 2, dt 8, 6:44 Sun. only). Rows list stations from New York to Chicago with arrival and departure times.

1934—NATIONAL PARK YEAR—Ask Erie Ticket Agents About Our Low Special Fares.

For Explanation of Reference Marks and Notes, See Pages 33 and 34.

For Parlor, Sleeping and Dining Service, See Pages 5 and 6.

Single Decks 50c ERIE RAILROAD PLAYING CARDS Bridge \$1.00 Sets On sale at ticket offices

For Explanation of Reference Marks and Notes, See Pages 33 and 34.

For Parlor, Sleeping and Dining Service, See Pages 5 and 6.

TABLE 6 WESTBOUND

HUNTINGTON—CHICAGO

EASTBOUND

Table with columns for Eastern Standard Time, Central Standard Time, and distances from New York and Chicago. Includes stations like N.Y., West 23d St., Chambers St., Jersey City Station, and Chicago (Dearborn Sta.).

TABLE 7 NEW YORK AND BUFFALO

Table with columns for WESTBOUND Read Down and EASTBOUND Read Up. Includes stations like Lv. N.Y., West 23d St., Ar. Buffalo, and various intermediate stops.

1934—NATIONAL PARK YEAR. Ask About Special Low Fares.

Sharp Reduction IN ROUND TRIP FARES EVERY WEEK-END Between All Stations

These fares apply between any two points on the Erie Railroad and its connections east of Chicago and St. Louis. Tickets good going Friday noon to Sunday noon, also from certain stations Friday morning and all day Sunday.

TABLE 8

DETROIT—TOLEDO—CLEVELAND—YOUNGSTOWN—PITTSBURGH

Table with columns for Eastern Standard Time, Central Standard Time, and distances from Cleveland. Includes stations like Detroit, Toledo, Cleveland, Youngstown, and Pittsburgh.

Holidays in the above table refers to the observance of New Year's Day, Memorial Day, Independence Day, Labor Day, Thanksgiving Day and Christmas Day.

EQUIPMENT

Detroit, Toledo, Cleveland, Youngstown, Pittsburgh Trains.

- List of train equipment including No. 6-Daily, No. 624-Daily, No. 626-Daily, No. 686-Daily, No. 688-Daily, and No. 687-Daily.

SAFE, SWIFT SHIPPING SERVICE —RAILWAY EXPRESS

When you have anything to ship, at home or on your travels, consider the convenience, speed and dependability of Railway Express service.

Information as to rates and service can be obtained at any Express Agency on the lines of this Railroad. RAILWAY EXPRESS Agency, Inc.

Special Fares FROM Chicago to New York FOR Steamship Passengers

New York and return \$47.00. One way \$23.50. Leave any time. Tickets good in coaches only.

New York and return \$46.05. Tickets on sale daily to those holding steamer tickets to Bermuda, Nassau, Halifax, and east coast ports.

For particulars apply to our Chicago Ticket Offices or address H. T. Harlow, G. P. A., Erie Railroad Company, 327 South LaSalle Street Chicago, Ill.



6880 3-21-'30

CLEAN HEALTHFUL AIR AND QUIET RESTFUL TRAVEL (See Page 37)

ERIE RAILROAD SYSTEM AND CONNECTIONS

Indicates Double Track

TABLE 9 BUFFALO—JAMESTOWN

Table with columns for Mls., Eastern Standard Time, and bus numbers (513, 523, 517, 519, 521) for Westbound and Eastbound routes.

Table with columns for Mls., Eastern Standard Time, and bus numbers (514, 516, 518, 520) for Westbound and Eastbound routes.

Holidays in the above table refer to the observance of New Year's Day, Memorial Day, Independence Day, Labor Day, Thanksgiving Day and Christmas Day.

TABLE 12 BRADFORD - SALAMANCA - CLEVELAND - CHICAGO

Table with columns for Miles from Bradford, Eastern Standard Time, and bus numbers (7, 557, 8, 10, 6) for Westbound and Eastbound routes.

See table 14, page 24 for baggage arrangements.

TABLE 10 NEW YORK—CHAUTAUQUA (Via Jamestown and West Ridge Transportation Co.)

Table with columns for Eastern Standard Time, bus numbers (1, 5, 7), and destinations (N. Y., West 23rd St., Chambers St., Jersey City Sta., Jamestown, Chautauqua).

NOTE—Tickets sold and Baggage checked through to Chautauqua.

TABLE 11 CHAUTAUQUA—AKRON—CHICAGO (Via Jamestown and West Ridge Transportation Co.)

Table with columns for Eastern Standard Time, bus numbers (7, 1, 2, 3, 6), and destinations (Chautauqua, Jamestown, Akron, Cleveland, Chicago).

NOTE—Tickets sold and Baggage checked through to Chautauqua.

TABLE 13 NEW YORK—SALAMANCA—BRADFORD

Table with columns for Miles from N. Y., Eastern Standard Time, and bus numbers (1, 557, 8, 10, 6) for Westbound and Eastbound routes.

Trains 5-557 and 560-6 carry through sleeping car between Bradford and New York Sleeper on train 557 will be parked at Bradford for occupancy until 8.00 A. M.

Busses leave as follows: (running time one hour.) Lv. Salamanca for Bradford, 8.20 A.M., 9.40 A.M., 2.05 P.M., 4.05 P.M., 5.35 P.M., 7.05 P.M., 11.03 P.M.

Lv. Bradford for Salamanca, 9.15 A.M., 11.15 A.M., 2.00 P.M., 4.00 P.M., 5.30 P.M.

BAGGAGE CHECKED TO BRADFORD—On Bus connections from Salamanca, N. Y., only bags, suit cases and other small articles of baggage will be handled.

For Parlor, Sleeping and Dining Service, See Pages 5 and 6.

TABLE 14 NEW YORK—NEWBURGH—(VIA HARRIMAN)

Table with columns for Eastern Standard Time, bus numbers (715, 713, 69, 251, 57, 793, 791, 355, 387, 353), and destinations (N. Y., W. 23d St., Chambers St., Jersey City Sta., Harriman, Mountainville, West Cornwall, Vail's Gate, New Windsor, West Newburgh, Newburgh).

TABLE 16 NEW YORK—NEWBURGH (VIA GREYCOURT)

Table with columns for Eastern Standard Time, bus numbers (781, 383, 375, 375, 371), and destinations (N. Y., W. 23d St., Chambers St., Jersey City, Greycourt, Greycourt, Blooming Grove, Washingtonville, Salisbury Mills, Bethlem. Brg. Crossing, Vail's Gate, New Windsor, West Newburgh, Newburgh).

TABLE 17 Goshen—Pine Island

Table with columns for Eastern Standard Time, bus numbers (345, 342), and destinations (N. Y., W. 23d St., Chambers St., Jersey City, Goshen, Orange Farm, Florida, Big Island, Pine Island).

TABLE 19 Goshen—Montgomery

Table with columns for Eastern Standard Time, bus numbers (785, 391, 390, 784), and destinations (N. Y., W. 23d St., Chambers St., Jersey City, Goshen, Sullivan Transp. Corporation, Middletown, Circleville, Bullville, Thompson Ridge, Pine Bush, Montgomery).

TABLE 20 MIDDLETOWN—PINE BUSH

Table with columns for Eastern Standard Time, bus numbers (27, 64, 2), and destinations (N. Y., W. 23d St., Chambers St., Jersey City, Middletown, Sullivan Transp. Corporation, Middletown, Circleville, Bullville, Thompson Ridge, Pine Bush).

TABLE 21 NEW YORK—MONTICELLO—LIBERTY

Table with columns for Eastern Standard Time, bus numbers (57, 59, 61, 63, 69), and destinations (N. Y., Jersey City, Monticello, Wurtsboro, Middletown, Liberty).

NOTE.—Tickets sold and baggage checked through to Monticello, Wurtsboro and Liberty.

TABLE 22 New York—Kenosha Lake—Jeffersonville

Table with columns for Eastern Standard Time, bus numbers (44, 2), and destinations (N. Y., Jersey City, Callicoon, Kenosha Lake, Jeffersonville).

NOTE.—Tickets sold and baggage checked through to Jeffersonville and Kenosha Lake.

TABLE 15 LACKAWAXEN—HONESDALE

Table with columns for Eastern Standard Time, bus numbers (271, 44, 270), and destinations (N. Y., W. 23d St., Chambers St., Jersey City, Lackawaxen, Rowlands, Glen Eyre, Shimers Rock Cut, Kimbles, Wellwood Ave., Hawley, White Mills, East Honesdale, Honesdale).

NOTE.—Passengers to and from Honesdale can also make connection via Narrowsburg (see Tables 2 and 3), and buses of the Honesdale Narrowsburg Bus Co.

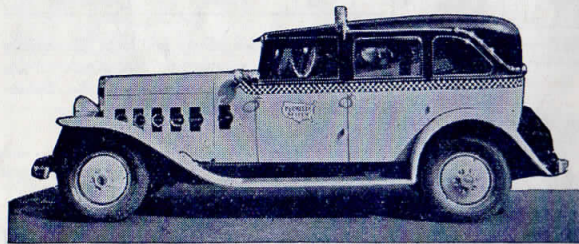
TABLE 18 MORRIS RUN BRANCH

Table with columns for Eastern Standard Time, bus numbers (249, 250), and destinations (Blossburg, Morris Run).

DOOR-TO-TRAIN
TRAIN-TO-DOOR
AT NEW YORK

One Person 85c Two Persons \$1.25
Three or More \$1.50

A tax of 5c is now assessed on all taxicab fares in New York City. This makes the above fares read: One person, 90c. Two persons, \$1.30. Three or more, \$1.55.



Erie Train-Cab Service at New York has steadily increased in popularity. Thousands have used and praised it.

Briefly, Train-Cab Service is the carrying of passengers from their door in New York or Brooklyn to our trains (and vice versa).

Strangers arriving at Erie Terminal, Jersey City, are taken directly to their destination. They never get "lost" and are never overcharged.

The fares shown above apply between our terminal and any place on Manhattan, 110th Street and south, also between the terminal and any point in the Brooklyn business district.

Service beyond the prescribed zones is metered to or from the zone limits and charged for at regular rates.

Train-Cab Service is available to all who travel between Greater New York and Erie points, Middle-town and west.

If you are travelling to New York you can buy the Train-Cab coupon with your rail ticket at the ticket office or from the conductor on any through train and you will find your taxicab awaiting the arrival of your train at Jersey City.

Travelling from New York you can buy the Train-Cab coupon with your rail ticket. The ticket agent will gladly arrange to have a taxicab sent for you at your home, hotel or office, or, if preferred, you yourself may phone for a Parmelee System Taxicab or hail one on the street.

It is not necessary, however, to buy your Train-Cab coupon before you call your taxicab. You may, if you choose, purchase it at Jersey City Terminal with your rail ticket on arrival there.

Ask the conductor or ticket agent for details.

TABLE 23 CARBONDALE LINE

Table with columns for Westbound Read Down, Eastern Standard Time, and Eastbound Read Up. Includes routes like N. Y. W. 23d St. and Susquehanna.

TABLE 24 ELMIRA-ROCHESTER

Table with columns for Westbound Read Down, Eastern Standard Time, and Eastbound Read Up. Includes routes like Elmira, Corning, and Rochester.

TABLE 25 ROCHESTER-MOUNT MORRIS-DANSVILLE (Electric)

Table with columns for Eastern Standard Time and routes between Rochester, Mt. Morris, and Dansville.

Table with columns for Eastern Standard Time and routes between Dansville, West Sparta, Groveland, and Rochester.

TRAINS between Mt. Morris and Avon will stop on signal at Shakers, Jones, Cuylerville, Jaycocks, Seven Nations, Huston, South Avon, Pierce, Fowler, Shantee, Linden Street and Spring Street and between Avon and Rochester, except Trains 467, 468 at Wards, Elm Place, Meadowwood, Gannett, Blair, Martin, Brooks, Fenner, Baileys, Crittenden, Westfall and South Park. HOLIDAYS in above table refer to the observance of New Year's Day, Decoration Day, Independence Day, Labor Day, Thanksgiving Day and Christmas Day.

TABLE 26 NEW YORK-MEADVILLE-OIL CITY

Table with columns for Westbound Read Down, Eastern Standard Time, and Eastbound Read Up. Includes routes like Meadville, Oil City, and Elmira.

NOTE. Tickets sold and baggage checked through to Cochranton, Franklin and Oil City.

TABLE 28 SALAMANCA-DUNKIRK

Table with columns for Westbound Read Down, Eastern Standard Time, and Eastbound Read Up. Includes routes like Salamanca, Dunkirk, and Buffalo.

TABLE 27 Chicago-Meadville-Oil City

Table with columns for Westbound Read Down, Eastern Standard Time, and Eastbound Read Up. Includes routes like Meadville, Oil City, and Chicago.

NOTE. Tickets sold and baggage checked through to Cochranton, Franklin and Oil City.

TABLE 29 ELMIRA-HOYVILLE

Table with columns for Westbound Read Down, Eastern Standard Time, and Eastbound Read Up. Includes routes like Elmira, Hoyville, and Lawrenceville.

CHECKING HAND BAGGAGE

Passengers arriving at Jersey City Terminal on Trains Nos. 6, 8 and 10 can check hand baggage at the ticket office in the Hudson Tube Concourse or at the baggage room in the Jersey City Station.

ORGANIZED PARTIES

Our services are at the disposal of clubs, lodges and other organizations in arranging for trips to conventions and gatherings of all sorts.

HUDSON AND MANHATTAN TUBE TRAINS
SCHEDULE OF RUNNING TIME BETWEEN
ERIE R. R. JERSEY CITY TERMINAL AND

Table showing running times for various routes between Jersey City Terminal and Manhattan/Hudson Tube.

ERIE R. R. FERRY TIME TABLE
EASTERN STANDARD TIME
CHAMBERS STREET FERRY
WEEK DAYS

Table showing ferry running times between New York and Jersey City for various routes.

a Will not run on Holidays. b Will not run Saturdays. c Except Saturdays and Holidays. d Holidays only.

SUNDAYS

Table showing ferry running times for Sunday routes between New York and Jersey City.

Ferry Running Time, 7 Minutes
TWENTY-THIRD STREET FERRY
WEEK DAYS

Table showing ferry running times for 23rd Street Ferry routes between New York and Jersey City.

SUNDAYS

Table showing ferry running times for Sunday routes for 23rd Street Ferry.

Ferry Running Time, 20 Minutes

RAILROAD AND PULLMAN FARES (Pullman Fares Include Surcharge)

For Information Only. Subject to Change Without Notice.

Table with columns for 'Between' and 'And' stations, and sub-columns for 'New York', 'Binghamton', 'Buffalo', 'Jamestown', 'Cleveland', and 'Chicago'. Each sub-column contains 'Railroad Fare', 'Seat Fare', and 'Low-er Berth' rates.

RATES FOR UPPER BERTH, SECTION, DRAWING ROOM OR COMPARTMENT IN SLEEPING CARS

(Including Surcharge)

Table with columns: 'Where Lower Berth Rate Is', 'Upper Berth Rate Will Be', 'Section Rate For One Passenger', 'Section Rate For Two Passengers', 'Drawing Room Rate Will Be', 'Compartment Rate Will Be'.

Note:—▲For section occupied by two passengers but with lower berth only prepared for night service.

Minimum Number of Railroad Tickets Required for Exclusive Occupancy of Sections, Drawing Rooms or Compartments in Sleeping Cars and Drawing Room in Parlor Cars

Table with 2 columns: Ticket type (Section, Compartment, etc.) and required number of tickets (One Adult, One and One-half, etc.).

GENERAL INFORMATION

STANDARD OF TIME—Erie Lines east of and including Lima, Ohio, are operated by Eastern Standard Time, Lines west of Lima, Ohio, by Central Standard Time.

TRAINS WILL NOT BE HELD for ferries from New York between hours of 4:00 P. M. and 5:30 P. M. Eastern Standard Time.

HOLIDAYS—The term "Holidays" (unless covered by special note) refers to the observance of New Year's Day, Lincoln's Birthday, Washington's Birthday, Memorial Day, Independence Day, Labor Day, Columbus Day, Election Day (November), Thanksgiving Day and Christmas Day.

THIS COMPANY IS NOT RESPONSIBLE FOR ERRORS in time tables, inconvenience or damage resulting from delayed trains or failure to make connections; schedules are subject to change without notice.

FARE PAID ON TRAINS—The lawful fare when paid to conductor is ten (10) cents in excess of the one-way ticket fare.

CHILDREN under five years of age are carried free when accompanied by parent or guardian; five years and under twelve, half fare, twelve years of age and over, full fare.

ADJUSTMENT OF FARES—Should any misunderstanding arise with conductors or agents, pay the fare required, take receipt and communicate with General Passenger Agent, Midland Bldg., Cleveland, Ohio.

SLEEPING AND PARLOR CAR RESERVATIONS—Space reserved by telegraph or telephone within city limit will be held until:

4:00 P. M. day prior to departure of trains leaving before noon next day. 9:00 A. M. day of departure for trains leaving between noon and 4:00 P. M. 1:00 P. M. day of departure for trains leaving after 4:00 P. M.

When application is by wire or letter from a point outside of city limit, space will be held until fifteen minutes of train time.

BAGGAGE TO BE CHECKED should be delivered at station at least thirty minutes before train time.

BAGGAGE DELIVERY IN NEW YORK CITY—All baggage checked to New York City will be sent to the West 23rd Street Station unless passenger specifies Chambers Street Station at time of checking.

Baggage delivery service in New York will be performed by the Railway Express Agency.

HAND-BAGGAGE in Pullman Cars is restricted to what can be conveniently placed in the berth, seat or other accommodations purchased by the passenger.

CHICAGO PASSENGER AND BAGGAGE TRANSFER is performed by the Parmelee Company. A uniformed agent boards all incoming trains of the Erie Railroad before arrival at Dearborn Station.

ARTICLES LOST ON TRAINS or left in waiting rooms or stations, owners should apply to Information Bureau, Jersey City Depot, or address General Passenger Agent, Midland Bldg., Cleveland, Ohio, giving full description of the property, stating date of loss and number of train.

REFERENCE MARKS AND NOTES

IMPORTANT—When trains are indicated as stopping conditionally, Conductors should be notified of intention to leave train and Station Agent notified of intention to board train.

- § Runs Sundays only.
|| Station restaurant.
* Runs daily.
† Runs daily except Sunday.
♣ Stops on Saturday only.
♦ Stops to discharge passengers.
‡ Will not run beyond Suffern on Saturdays.
♠ Stops on Holidays only.
¶ Train 51 will not operate west of Suffern on Holidays.
‡ Stops on signal to receive and discharge passengers.
k Runs Saturdays only.
M. C. Motor Car Service.
N. B. No Baggage carried.
ab Stops on signal (1.56 P. M.) to receive passengers.
ac Stops (5.21 A. M.) to discharge passengers from Hornell and east and on signal to receive passengers.
ad Via Bus to or from Salamanca.
ae Stops on signal (7.31 P. M.) to receive passengers for New York.
ag Trains 270 and 273 operate as mixed trains, daily, between Lackawaxen and Hawley.
an Stops Canisteo (7.49 P. M.) to discharge from west of Hornell.
av On Sundays only Train 6 will arrive West 23rd Street at 8.30 A. M.
ax Stops to discharge passengers from east of Hammond.
ay Stops on signal (1.52 A. M.) to discharge passengers Port Jervis and east and to receive for Buffalo.
ba Stops on signal (8.42 A. M.) to receive passengers for Port Jervis and west.
bb Stops on signal (9.36 A. M.) to receive passengers.
bm Stops on signal (12.01 P. M.) to discharge passengers from New York.
br Stops Garrettsville-Hiram (11.04 A. M.), East 93 St., Cleveland (11.40 A. M.) to discharge passengers from east of Youngstown.
bt No Agent on duty. No baggage handled on Trains 5 and 6 to or from Castile.
bu Stops weekdays to discharge passengers. Makes regular stop (1.33 A. M.) Sundays only.
bv Stops (8.14 P. M.) on signal to receive passengers for Goshen and west.
bx Stops (2.29 P. M.) to receive passengers for Tuxedo and west.
ca Train 27 stops on Sundays and Holidays only Rutherford (2.44 P. M.); Greycourt (4.00 P. M.)
cb Stops on signal Passaic (8.05 P. M.), Ridgewood (8.24 P. M.) to receive passengers for Goshen and west.
cd Stops Lancaster (8.43 A. M.), Darien Center (9.02 A. M.), Burns (10.36 A. M.) to discharge passengers from Buffalo and on signal to receive passengers.
ce Train 45 will run Tuesday, May 29th, only.
cn Stops on signal Union City (8.40 P. M.); Cambridge Springs (8.59 P. M.) to discharge passengers from Jamestown and east and to receive for Youngstown and west.
cp Stops on signal to receive passengers for east of Hammond (10.35 P. M.).
cs Stops (8.50 P. M.) to discharge passengers from Marion and west and on signal to receive for Youngstown and east.
ct Tickets sold and baggage checked through to Lake Huntington.
cw Stops (12.07 A. M.) to let off passengers from Port Jervis and west.
cx Stops to discharge passengers from New York.
cy Stops to discharge passengers from Cleveland and beyond.
cz Stops on signal (12.06 P. M.) to discharge passengers from New York and Paterson and to receive passengers for Binghamton and west.
da On Sundays Train 5 has no connection from Newark.
db Stops on signal (4.40 P. M.) to receive passengers for New York.
dc Stops on Saturdays only to discharge passengers from Cleveland.
dg Stops on signal at Warren (4.40 A. M.) to discharge passengers from Chicago and to receive passengers for Jamestown and east.
dh No baggage handled on this train to points on P. & L. E. R. R. except from Youngstown where baggage should be checked from N. Y. C. R. R. Station.
dt Baggage for points east of Salamanca handled on Train 10.
du Coaches only west of Youngstown.
dv Stops on signal (12.24 P. M.) to receive passengers for Central Valley and Newburgh Branch.
dw Stops on signal (8.56 A. M.) Monday only, to receive passengers.
dx Stops Ridgewood (6.43 P. M.), Passaic (6.59 P. M.) to discharge passengers from Goshen and west.
dy Stops on signal Cambridge Springs (7.08 A. M.), Union City (7.28 A. M.), to discharge passengers from Chicago and to receive for Binghamton and east.
dz Stops (7.12 A. M.) to discharge passengers for Paterson, Passaic, Rutherford and Newark Branch points.
ea Stops (6.49 P. M.) to discharge passengers from Elmira and east.
ec Bus service between New Castle and New Castle (Washington St.).
en Stops on signal Passaic (9.29 A. M.), Ridgewood (9.46 A. M.) to receive passengers for Binghamton and west.
er Stops (5.29 A. M.) to discharge passengers from Cleveland and west and on signal to receive for Pittsburgh.
ev Stops on signal to receive passengers for Cleveland and beyond.
ew Stops (11.46 A. M.) to discharge from Jamestown and east and west of Akron.
ez Connection from Train 6 arrives Newark Sundays (7.49 A. M.).
ga Connection for Train 27 leaves Newark on Sundays only at (2.29 P. M.).
gb Stops (11.47 A. M.) to discharge passengers from east of Avon.
gc Stops on signal (5.48 P. M.) to receive passengers for Meadville and beyond.
gd Stops Arkipot (5.18 P. M.), Burns (5.23 P. M.), Swains (5.36 P. M.), Washington Hunt (5.50 P. M.), Rock Glen (6.15 P. M.), Darien Center (6.58 P. M.) to discharge passengers from Hornell and east and on signal to receive passengers.
ge Private parties operate bus service between Susquehanna and Lanesboro.
gz Will not run Saturdays and Holidays.
ha Will not run Holidays.
hb Will not run Mondays.
hc Stops Alden (9.29 P. M.) to discharge passengers from Buffalo and on signal to receive passengers.
hd Runs Saturdays and Holidays only.
hm On Saturdays connection for Train 69 leaves Newark at (5.16 P. M.), on Holidays (5.04 P. M.)
hn On Sundays connection from Train 2 arrives Newark (7.22 P. M.).
ho Stops (4.18 P. M.) to discharge passengers from Binghamton and west and on signal to receive for New York.
ht Trains 5-57 and 560-6 carry through sleeping cars between Bradford and New York.
hv Stops daily except Sunday to discharge passengers from New York.
hw Will not run Sundays and Holidays.
mb On Sundays train 708 leaves Middletown (6.10 P. M.), arrives Jersey City (8.06 P. M.).
mh Stops on signal, Sundays only, to discharge passengers from New York.
mu Stops Sundays only.
mw Stops (11.06 A. M.) Saturdays only.

STOP-OVERS AT NIAGARA FALLS

Passengers holding tickets reading "via Erie Railroad" from or through Elmira to or through Youngstown or vice versa may exercise their privilege of going by way of Buffalo and stopping over for as long as ten days at Niagara. Upon request, the Erie Ticket Agent at Buffalo will issue without charge a round trip ticket between Buffalo and Niagara Falls.

STOP-OVERS ON THE ERIE RAILROAD

On local one-way tickets sold at regular fares, local round-trip tickets sold at double the one-way fares, All-Year, Summer and Winter Tourist and Convention Tickets, stop-overs will be allowed on going and return trips within final limit of tickets at any Erie Railroad Station en route upon notice to conductor and without deposit of ticket.

WESTERN UNION

Play Safe —Telegraph Ahead for Reservations

It gives one a delightful feeling of security to know that upon reaching his destination, the clerk at the hotel will greet him with: "Yessir. Got your telegram. Room all ready!"

If you have not already telegraphed for reservations, you can do so while traveling. Ask the porter for blanks, give him your message and he will have it sent from the next station.

ERIE RAILROAD COMPANY

GENERAL OFFICES, MIDLAND BUILDING, CLEVELAND. Telephone Cherry 8400.
GENERAL OFFICES, HUDSON TERMINAL, 50 CHURCH STREET, NEW YORK. Telephone Cortlandt 7-9200.
GENERAL OFFICES, UTILITIES BUILDING, 327 SOUTH LA SALLE STREET, CHICAGO. Telephone Harrison 4160.

TRAFFIC AND DEVELOPMENT DEPARTMENTS

TRAFFIC

D. L. GRAY, Vice-President, Cleveland
CARL HOWE, Vice-President, Chicago
C. L. CHAPMAN, Assistant to Vice-President, Cleveland.

G. C. MANNING, Assistant Vice-President, New York.

PASSENGER

C. C. HOWARD, Passenger Traffic Manager, Cleveland.
R. B. ROGERS, General Passenger Agent, Cleveland.
H. T. HARLOW, General Passenger Agent, Chicago.
T. R. PATTON, Assistant General Passenger Agent, Youngstown.

F. A. WALDRON, Assistant General Passenger Agent, New York.
ALFRED FYNN, Assistant General Passenger Agent, Chicago.
E. J. HAWERKOST, General Western Passenger Agent, Chicago.
H. M. WADE, General Baggage, Mail and Express Agent, New York.

FREIGHT

L. B. BURFORD, Freight Traffic Manager, Cleveland.
L. R. KNAPP, Assistant Freight Traffic Manager, Cleveland.
O. M. MEYNE, General Freight Agent, Cleveland.
W. H. STADELMAN, Eastern Freight Traffic Manager, New York.
G. R. WHEELER, General Freight Agent, New York.
E. M. KAIN, Assistant General Freight Agent, Buffalo.

T. E. McANDREWS, Assistant General Freight Agent, Pittsburgh.
F. G. LANTZ, Freight Traffic Manager, Chicago.
W. V. KENNEDY, Assistant Freight Traffic Manager, Chicago.
A. BLAUDEL, General Freight Agent, Chicago.
J. G. HILL, General Freight Agent, Chicago.
O. R. DAVIES, Assistant General Freight Agent, Cincinnati.
W. H. KOCH, Assistant General Freight Agent, Detroit.

PERISHABLE FREIGHT TRAFFIC

R. E. O'GRADY, Manager, Pier 20, N. R., New York.

COAL AND COKE

G. H. REINBRECHT, Coal Traffic Manager, Cleveland.
J. A. FERGUSON, Coal Freight Agent, Cleveland.
F. D. AUSTIN, General Coal and Coke Agent, Chicago.

DAIRY

W. L. KENDALL, General Dairy Agent, Chicago, Ill.

FOREIGN FREIGHT TRAFFIC

H. F. BELL, Foreign Freight Traffic Manager, New York.
EUROPEAN GENERAL AGENTS, Sutherland International Despatch, Ltd., London, England.

LIVE STOCK

H. B. ROGERS, General Live Stock Agent, East Buffalo, N. Y.

GRAIN TRAFFIC

T. W. KANE, Grain Agent, New York.

DEVELOPMENT

L. L. WHITE, Vice-President and Assistant to President, Cleveland.
GEO. F. WESTON, Industrial Commissioner, Cleveland.
V. M. WELLMAN, Industrial Agent, New York.
F. M. AMERICA, Editor and Mgr. Erie R. R. Magazine, Cleveland.

TRAFFIC DEPARTMENT REPRESENTATIVES

Akron, O.—80 East Exchange St. (Telephone Hemlock 8194-8195)
J. P. CLARK, Division Passenger Agt.
C. E. KING, General Agent.
Albany, N. Y.—Room 2, D. & H. Bldg. (Telephone 4-6051)
C. F. WHADCOCK, General Agent.
Antwerp, Belgium—84 Quai Jardaens
L. E. STEINMANN, Agent.
Atlanta, Ga.—902-3 Healy Bldg. (Telephone Walnut 2135)
S. S. TORREY, General Agent.
Baltimore, Md.—1525 Baltimore Trust Bldg. (Telephone Plaza 1373)
W. J. MURRAY, General Agent.
Birmingham, Ala.—1216-17 Watts Bldg. (Telephone 3-5980)
W. K. VANDIVER, General Agent.
Boston, Mass.—80 Federal Street. (Telephone Liberty 7725-7726)
E. J. DEAN, N. E. F. & P. A.
Bradford, Pa.—Erie Station. (Telephone 3413)
J. C. MOFFATT, General Agent.
Bremen, Germany—Holzspforte 10.
CARL PRIOR, Agent.
Buffalo, N. Y.—6 North Division St. (Telephone Washington 4300)
J. A. DOLAN, G. A. P. D.
538 Main Street.
(Telephone Wash. 1865)
E. M. KAIN, Asst. General Freight Agt.
H. B. ROGERS, General Live Stock Agt.
Chicago, Ill.—327 South La Salle St. (Telephone Harrison 4160)
H. T. HARLOW, General Passenger Agt.
C. D. FURNER, General Agent.
W. L. KENDALL, General Dairy Agent.
Cincinnati, O.—503 Gwynne Bldg. (Telephone Main 3420-3421)
O. R. DAVIES, Asst. General Freight Agt.
Cleveland, O.—Midland Bldg. (Telephone Cherry 8400)
J. M. SKAHEILL, Division Freight Agt. Erie Station. (Telephone Cherry 8400)
T. W. HOBBS, City Passenger Agent.
Columbus, O.—Rooms 309-310 Atlas Bldg., 8 East Long Street. (Telephone Adams 7331)
F. W. FISCHER, General Agent.

Dallas, Tex.—1112 Tower Petroleum Bldg. 1906 Elm St. (Telephone 2-7352)
T. J. MARTIN, General Agent.
Dayton, O.—509-512 Miami Savings Bldg. (Telephone Adams 8481)
W. P. KROMPHARDT, Div. Frt. Agt.
Des Moines, Ia.—Hubbell Bldg., 904 Walnut Street. (Telephone 4-0018)
C. L. COX, General Agent.
Detroit, Mich.—Room 3-157 General Motors Bldg. (Telephone Madison 2360-2361)
W. H. KOCH, Assistant General Frt. Agt.
Elmira, N. Y.—Erie Station. (Telephone 2-1821)
J. W. O'HARA, Division Passenger Agt. (Telephone 2-0377)
A. W. MICHELBACH, Division Freight Agent.
Glasgow, Scotland—90 Mitchell St.
W. S. THOMSON, General Agent.
Hamburg, Ger'y—Ferdinandstrasse 53-44
ERICK GRIEBEL, General Agent.
Huntington, Ind.—Erie Station. (Telephone 140)
F. C. MCCARTHY, Division Freight Agt.
Indianapolis, Ind.—143 No. Meridian St. (Telephone Lincoln 2088)
T. J. WILLIAMSON, General Agent.
Jamestown, N. Y.—Erie Station
J. A. CLEVELAND, General Agent. (Telephone 4832)
Jersey City, N. J.—Erie Station
(Telephone Delaware 8-6400)
P. F. ARROYO, G. A. P. D.
Kansas City, Mo.—Rooms 326-7 Railway Exchange Bldg., 7th and Walnut Streets. (Telephone Cherry 6323)
N. C. FRICK, General Agent.
A. F. WAINSCOTT, T. P. A.
Liverpool, Eng.—17 Brunswick St.
A. W. TAYLOR, General Agent.
London, E. C. 3, Eng.—4 Blitler St. South Jefferson & Fulton Streets. (Telephone 8007)
D. S. DEANS, Genl. Continental Agt.

Los Angeles, Cal.—108 West 6th Street. (Telephone Vandike 6542)
C. W. SIBLEY, General Agt. Pass. Dept.
L. A. DWELLE, General Agent.
Marion, O.—Terminal Building (Telephone 2657)
A. R. TENNIS, Division Freight Agent.
Memphis, Tenn.—1628-9 Exchange Bldg., Madison & Second Sts. (Telephone 6-5577)
E. L. PARR, General Agent.
Milwaukee, Wis.—1015 Majestic Bldg., 231 Wisconsin Street. (Telephone Marquette 5555-5556)
J. G. VREELAND, General Agent.
Minneapolis, Minn.—125 Third Street, South. (Telephone Main 3604)
D. R. THOMPSON, General Agent.
Newark, N. J.—1801-2 Military Park Bldg., 60 Park Place. (Telephone Market 2-0525-26-27)
C. A. STOEBER, General Agent.
New Haven, Conn.—Room 512 Roger Sherman Bldg. (Telephone 5-7937)
G. W. MADSON, General Agent.
New Orleans, La.—Room 113 Whitney Bldg. (Telephone Main 6607)
D. C. KELSEY, General Agent.
New York, N. Y.—8 West 40th Street. (Telephone Pennsylvania 6-0931)
J. F. WILD, G. A. P. D.
W. G. TEDFORD, City Passenger Agent. 50 Church Street. (Telephone Cortlandt 7-9200)
E. W. VAIL, General Eastern Frt. Agent.
A. R. WALTON, Division Freight Agent.
Olean, N. Y.—Erie Station. (Telephone 7411)
J. M. HANB, Traveling Freight Agent.
Omaha, Neb.—1319 Farnam St. (Telephone Jackson 4586)
C. V. HARROW, General Agent.
Peoria, Ill.—220 Jefferson Building, Cor. South Jefferson & Fulton Streets. (Telephone 8007)
E. T. Olander, General Agent.

Philadelphia, Pa.—1009-10 Finance Bldg. (Telephone Rittenhouse 8975-8976)
H. T. YOUNG, General Agent.
Pittsburgh, Pa.—Gulf Building. (Telephone Grant 4831-2-3)
T. E. McANDREWS, A. G. F. A.
Portland, Ore.—Room 422 Pacific Bldg., 506 Yamhill St. (Telephone Beason 3706)
J. A. RUSSELL, General Agent.
Rochester, N. Y.—Erie Station. (Telephone Main 2826)
B. C. WEDD, Division Freight Agent.
Rotterdam, Holland—52 West-Zeedijk.
H. VAN KRIEKEN, Agent.
San Francisco, Cal.—681 Market St. (Telephone Sutter 3876)
J. A. LLOYD, General Agent.
St. Louis, Mo.—Rooms 906-7, 1218 Olive St. (Telephone Chestnut 7723-7724)
G. F. DANIELS, General Agent.
St. Paul, Minn.—536 Robert St. (Telephone Cedar 5912)
C. R. PETRY, General Agent.
Scranton, Pa.—Erie Station. (Telephone 5203)
G. A. LAMB, Division Freight Agent.
Seattle, Wash.—1808 Northern Life Tower. (Telephone Elliot 4834)
W. R. SIBLEY, General Agent.
Springfield, O.—516 First National Bank Building. (Telephone Center 1178)
T. J. FLYNN, General Agent.
Toledo, O.—342 South Erie Street. (Telephone Main 3816)
H. J. SPRANGENBURG, General Agent.
Toronto, Ont.—69 Yonge Street. (Telephone Elgin 4077)
E. M. SNELL, General Agent.
Tulsa, Okla.—324-55 Philcade Bldg. (Telephone 3-8613)
O. M. MITCHELL, General Agent.
Youngstown, O.—Terminal Building. (Telephone 41101)
H. W. VON WILLER, Division Frt. Agt.

AIR-CONDITIONED SERVICE

at **LOWEST FARES**
on and after **JUNE 17** between

NEW YORK, CHICAGO and CLEVELAND

THE ERIE LIMITED

This famous train will contain air-conditioned coaches, sleeping cars, dining and lounge cars, offering the cleanest and most comfortable form of travel plus the economy of lowest fares.

The schedule, both east and westbound, will be the same as at present.

THE LAKE CITIES

Beginning June 17th Trains 5 and 6 (The Lake Cities), with air-conditioned equipment, will be extended to operate through between New York and Chicago, in addition to providing improved service between New York and Cleveland.

The Lake Cities, with its companion train, The Erie Limited, will offer double daily air-conditioned service between New York and Chicago and principal intermediate points. The condensed schedule follows:

TRAIN 5 (westbound)

Lv. New York (Jersey City Sta.)..... 6:30 P. M., E. S. T.
Lv. Binghamton 11:44 P. M., E. S. T.
Lv. Meadville 6:28 A. M., E. S. T.
Lv. Youngstown 8:00 A. M., E. S. T.
Ar. Cleveland 9:35 A. M., E. S. T.
Lv. Akron 9:24 A. M., E. S. T.
Ar. Chicago 5:00 P. M., C. S. T.

TRAIN 6 (eastbound)

Lv. Chicago 9:00 A. M., C. S. T.
Ar. Akron 6:05 P. M., E. S. T.
Lv. Cleveland 6:00 P. M., E. S. T.
Ar. Youngstown 7:32 P. M., E. S. T.
Ar. Meadville 9:00 P. M., E. S. T.
Ar. Jamestown 10:36 P. M., E. S. T.
Ar. New York (Jersey City Sta.)..... 8:50 A. M., E. S. T.

THE SOUTHERN TIER EXPRESS

Beginning June 17 the Southern Tier Express on a new and improved schedule will operate between New York and Jamestown, carrying New York-Jamestown, New York-Bradford, and New York-Bradford sleeping cars. Lounge, dining and coach facilities. The condensed schedule follows:

TRAIN 9 (westbound)

Lv. New York (Jersey City Sta.)..... 8:45 P. M., E. S. T.
Ar. Buffalo 7:35 A. M., E. S. T.
Ar. Bradford 7:45 A. M., E. S. T.
Ar. Jamestown 8:10 A. M., E. S. T.

TRAIN 10 (eastbound)

Lv. Jamestown 7:30 P. M., E. S. T.
Lv. Bradford 7:45 P. M., E. S. T.
Lv. Buffalo 8:15 P. M., E. S. T.
Ar. New York (Jersey City Sta.)..... 6:55 A. M., E. S. T.

ERIE TICKET OFFICES AND PASSENGER STATIONS IN PRINCIPAL CITIES

Akron, O.—Union Station. (Telephone Jefferson 9141)
B. L. BENDER, Ticket Agent.
Binghamton, N. Y.—Erie Station. (Telephone 4-3251)
J. H. WEBSTER, Ticket Agent.
Bradford, Pa.—Erie Station. (Telephone 3716)
A. J. SULLIVAN, Ticket Agent.
Brooklyn, N. Y.—City Ticket Office. 155 Pierrepont St. (Telephone Triangle 5-7440)
W. A. MORRISON, Ticket Agent.
Chicago, Ill. (Cont.)
Hotel Ticket Offices—Congress, La Salle, Sherman, Stevens, Palmer House, Merchandise Mart. (Telephone Harrison 2203)
F. E. SCOTT, Ticket Agent.
Dearborn Station. (Telephone Harrison 9830)
H. S. BARE, Ticket Agent.
Cleveland, O.—City Ticket Office. 2063 East 9th St. (Telephone Cherry 8400)
CASPER J. MILLER, Ticket Agent.
Erie Station. (Telephone Cherry 8400)
G. W. GULICK, Ticket Agent.
Elmira, N. Y.—Erie Station. (Telephone 2-0380)
E. J. STEELE, Ticket Agent.
Hornell, N. Y.—Erie Station. (Telephone 680)
R. L. SMITH, Ticket Agent.
Huntington, Ind.—Erie Station. (Telephone 140)
O. M. BELL, Ticket Agent.
Jamestown, N. Y.—Erie Station. (Telephone 6078)
FRANK PRIEST, Ticket Agent.
Jersey City, N. J.—Erie Station. (Telephone Delaware 8-6400)
G. B. IRVING, Ticket Agent.
Mansfield, O.—Erie Station. (Telephone Canal 1423)
O. L. ENOS, Ticket Agent.
Marion, O.—Erie Station. (Telephone 1212)
L. E. NEBERGALL, Ticket Agent.
Meadville, Pa.—Erie Station. (Telephone 1212)
R. E. TOWNS, Ticket Agent.
Middletown, N. Y.—Erie Station. (Telephone 3303)
J. H. DIMKE, Ticket Agent.
Newark, N. J.—Erie Station. (Telephone Humboldt 2-0600)
G. J. McMICHAEL, Ticket Agent.
New York, N. Y.—City Ticket Office. 8 West 40th Street. (Telephone Pennsylvania 6-0933)
F. H. RICE, Ticket Agent.
West 23rd Street Station. (Telephone Chelsea 3-0780)
C. H. POTTER, Ticket Agent.
New York, N. Y. (Cont.)
Chambers Street Station. (Telephone Barclay 7-6500)
T. I. NEWMAN, Ticket Agent.
17 John Street. (Telephone Cortlandt 7-6430 and 7-6431)
H. T. JAMES, Ticket Agent.
Olean, N. Y.—Erie Station. (Telephone 4343)
J. F. MITCHELL, Ticket Agent.
Passaic, N. Y.—Erie Station. (Telephone 2-1613)
O. R. KRECH, Ticket Agent.
Paterson, N. J.—Erie Station. (Telephone Sherwood 2-3337)
J. H. GRAF, Ticket Agent.
Port Jervis, N. Y.—Erie Station. (Telephone 300)
R. FARBER, Ticket Agent.
Rochester, N. Y.—Erie Station. (Telephone Main 4378)
C. J. GILBERT, Ticket Agent.
Youngstown, O.—Erie Station. (Telephone 41101)
G. D. HUGHES, Ticket Agent.