

**NICKEL  
PLATE  
ROAD**

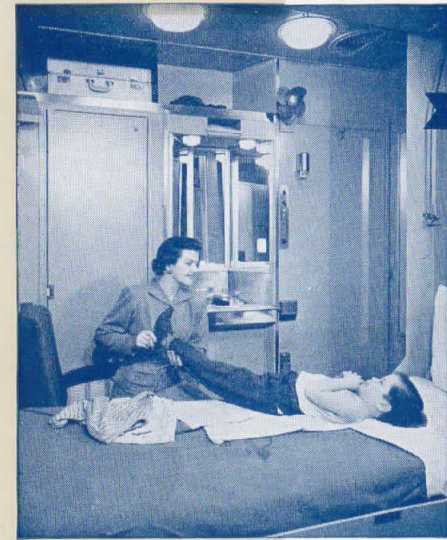
**NICKEL  
PLATE  
ROAD**

**PASSENGER SCHEDULES**  
OCTOBER 27, 1957  
TO APRIL 26, 1958

**PASSENGER SCHEDULES**  
OCTOBER 27, 1957  
TO APRIL 26, 1958

**NICKEL  
PLATE  
ROAD**

*“Travel on the . . .  
is an extension of gracious living”*



**BEDROOM**

Bedroom has upper and lower beds for double or single occupancy.



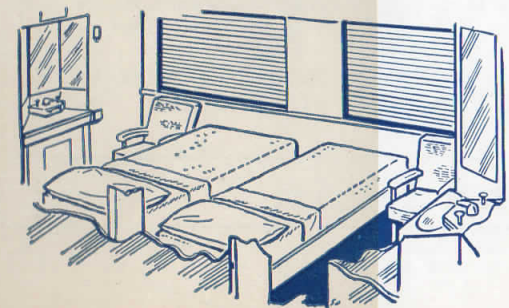
**ROOMETTE**



Ample living space when beds are folded out of sight.



Roomette provides standing room even when the bed is down.



Adjoining bedrooms may be readily converted into twin bed suite by removing a partition.

**COACH TRAVEL BECOMES MORE ENJOYABLE ON THE NICKEL PLATE ROAD**









**TABLE NO. 3**  
**ST. LOUIS**  
**AND**  
**CLEVELAND**

**REFERENCE**  
**MARKS**

**EASTBOUND—READ DOWN**      **WESTBOUND—READ UP**

No. 10 Daily (Note F)	Miles	STATIONS	No. 9 Daily (Note F)
PM		<b>CENTRAL STANDARD TIME</b>	AM
* 7.00	0	Lv. St. Louis (Un. Sta.) (Mississippi River)	* 7.40
7.28	8.4	Madison	7.00
7.47	18.4	Glen Carbon (Horse Shoe Lake)	6.33
	23.0	Edwardsville	
	36.3	Alhambra	
	42.5	New Douglas	
	48.2	Sorento	5.54
	51.4	Panama	
	54.3	Donnellson	
	60.2	Ottawa	
	66.5	Fillmore	
	72.5	Bayle	
8.50	76.4	Ramsey	5.14
	85.2	Herrick	
	92.3	Cowden	
	99.9	Mode	
	105.6	Stewardson	
	116.4	Neoga	
	127.5	Lerna	
10.05	136.9	Charleston	3.50
	141.9	Fair Grange	
	145.9	Rardin	
	151.4	Oakland	
	157.7	Brocton	
	166.5	Metcalfe	
	177.1	Hilde Farm	
	183.0	Humick	
10.59	188.4	Cayuga Ind. (Wabash River)	2.30
	196.4	Cates	
11.21	205.8	Veederburg	2.03
	213.2	Mellott	
	217.2	Wingate	
	222.5	New Richmond	
11.45	226.4	Linden	1.37
	231.2	Kirkpatrick	
	236.9	Clark's Hill	
12.20	248.5	Frankfort	1.10
12.30	248.5	Frankfort	1.00
	255.0	Boyleston	
	257.9	Hillsburg	
	260.1	Scireville	
	263.0	Kempson	
	268.0	Goldsmith	
1.05	273.7	Tipton	12.25
	278.6	Hobbs	
1.20	284.3	Elwood	12.12
	290.4	Orestes	
1.30	293.1	Alexandria	12.01
1.55	309.3	Muncie (White River)	11.40
	315.8	De Soto	
	320.5	Albany (Mississippi River)	
	326.3	Red Key	
2.25	337.2	Portland	10.55
		<b>EASTERN STANDARD TIME</b>	
	348.2	Ft. Recovery, O. (Wabash River)	
3.50	357.4	Coldwater	11.28
4.03	363.1	Celina	11.16
		(Grand Lake)	
4.20	372.9	St. Marys (St. Marys River)	10.58
	382.0	Buckland (Auklee River)	
	386.1	Hume	
5.00	392.7	South Lima	10.30
5.15	394.2	Lima	10.15
	403.3	Beaver Dam	
	409.4	Bluffton	
5.40	413.2	Mount Cory	9.32
5.50	416.5	Rawson	9.27
6.15	425.4	K-Page 10 Findlay (Blanchard River)	9.15
6.25	434.4	Aradla	8.49
6.35	440.1	Fostoria	8.40
6.50	450.4	Green Springs	8.17
7.15	472.6	Bellevue	7.03
7.42	499.3	Vermillion	7.29
8.01	510.0	Lorain (Black River)	7.17
8.22	528.0	Rocky River (Rocky River)	6.50
8.45	536.7	Cleveland (U. T.) (Cuyahoga River)	6.30
AM		<b>EASTERN STANDARD TIME</b>	PM

(CST) Central Standard Time.  
(EST) Eastern Standard Time.  
Light face figures denote A.M. Dark Face figures denote P.M.  
\*—Daily.  
▲—Via Merchants Bridge.

**CONDITIONAL STOPS**, as provided for herein, will be made on advance notice to Agent to pick up passengers, and on notice to Conductor to let off passengers.

**Note E.**—Train No. 10 will stop at any station between Charleston and Fostoria to discharge pay passengers from St. Louis or west; and will stop, when request is made, at any station west of Linden to receive pay passengers for any station east of Tipton where scheduled to stop.

**Note F.**—Train No. 9 will stop on signal at any point between Fostoria and Tipton to receive pay passengers for any station west of Frankfort; and will stop at any station west of Frankfort to discharge pay passengers from Tipton and east.

**Note X.**—D. L. & W. R. R. Train No. 2 operates on the schedule shown in Table 1 daily except Sundays and Holidays, with the further exception that ferry connection arrives Barclay St. at 3.42 P.M. on Saturdays. On Sundays and Holidays this train is designated No. 4 and leaves Buffalo at 5.25 A.M., arriving New York at 3.12 P.M.

**a**—Stops at Hibbard Monday through Friday (on advance notice to Agent at Argos—phone Argos 21) to receive pay passengers for Ft. Wayne and east; and (on notice to conductor) to discharge pay passengers from Chicago. Regular stop on Saturdays, Sundays and Holidays.

**b**—Stops on signal to leave pay passengers from Ft. Wayne and west and take for Cleveland and east.

**c**—Stops on signal to leave pay passengers from Chicago and take for Cleveland and east.

**d**—Stops on signal to pick up or leave paying passengers.

**e**—Stops on signal Monday through Friday to leave pay passengers from Chicago and take for Cleveland and east. Regular stop on Saturdays, Sundays and Holidays.

**f**—Stops on signal only to receive or discharge passengers.

**g**—Stops on signal to take pay passengers for Lorain and east.

**h**—Stops on signal to leave pay passengers from Cleveland and west and take pay passengers for Buffalo and east.

**k**—Stops on signal to pick up pay passengers for Ft. Wayne and east.

**m**—Stops on signal to leave pay passengers holding tickets from Ft. Wayne and east to this station.

**n**—Stops on signal Monday through Friday to leave pay passengers from Cleveland and east and take for South Whitley and west. Regular stop on Saturdays, Sundays and Holidays.

**p**—Stops on signal Monday through Friday to receive or discharge passengers. Regular stop on Saturdays, Sundays and Holidays.

**u**—Stops on signal Sundays only to take pay passengers for Cleveland and east.

**v**—Stops at Hibbard (on advance notice to Agent at Argos—phone Argos 21) to receive pay passengers for Cleveland and east; and (on notice to conductor) to discharge pay passengers from Chicago.

**w**—Stops on signal on week days to receive or discharge passengers. Regular stop on Sundays.

**x**—Stops at Hibbard (on advance notice to Agent at Argos—phone Argos 21) to receive pay passengers for Chicago; and (on notice to conductor) to discharge pay passengers from Cleveland and east.

**y**—Stops at Hibbard Monday through Friday (on advance notice to Agent at Argos—phone Argos 21) to receive pay passengers for Chicago; and (on notice to conductor) to discharge pay passengers from Ft. Wayne and east. Regular stop on Saturdays, Sundays and Holidays.

**z**—Stops on signal to leave pay passengers holding tickets from Lorain and east to this station.

**ca**—Stops on signal to leave pay passengers from Cleveland and east and take pay passengers for Ft. Wayne and west.

**cf**—Stops on signal to leave pay passengers from Fostoria and east and take pay passengers for Ft. Wayne and west.

**cr**—Stops on signal to leave pay passengers from Buffalo and east and take pay passengers for Cleveland and west.

**A**—Change trains at Dover.  
**D**—Connecting train—change at Dover.  
**H**—Via Pennsylvania Greyhound Lines. Bus terminal is located at 218 Adams Ave. (2 blocks from Lackawanna Station) in Scranton, and at 69-73 North Main St. in Wilkes-Barre. Bus time is shown only for information of the public. No through fares are published with bus line.  
**Holidays**—The term holidays used in these timetables applies to New Year's Day, Washington's Birthday, Memorial Day, Independence Day, Labor Day, Thanksgiving and Christmas Day.



Free side trip from Buffalo

Patrons holding the following types of tickets reading to or from Buffalo via the Nickel Plate Road are permitted a free side trip to Niagara Falls—

One-way or round-trip tickets from, to, or through Cleveland, O., on the west, and Elmira, N. Y., Emporium, Pa., or Rochester, N. Y., on the east.

Round-trip tickets from or through Leipsic Jct., O., or Lima, O., on the west, to Buffalo, N. Y. or points beyond.

Ask any Nickel Plate Road ticket agent or conductor for complete information.

Nickel Plate passengers arrive in Buffalo at the Lackawanna Passenger Terminal, foot of Main Street, a point particularly convenient to hotels, theaters, and to points of departure for Niagara Falls.

**NOW . . . convenient**  
**nation-wide credit service**  
**on the NICKEL PLATE ROAD**  
**and other leading railroads!**

For personal or business travel . . . use the convenient charge-account service of the RAIL TRAVEL CARD!

- "Charge-it" service at ticket offices
- Honored on trains for dining service
- Simplifies expense accounts—saves carrying large amounts of cash
- Requires no deposit

for complete information, ask your railroad ticket agent . . . or write

**RAIL TRAVEL CREDIT AGENCY**  
Room 436 Union Station • Chicago 6, Illinois

**2 Bargain Travel Plans**

**GROUP ECONOMY PLAN**  
25% reduction in regular round-trip fares for groups of 3 or more adults going and returning together in coaches. Return limit 30 days.

**FAMILY PLAN**  
Special reduced round-trip fares are available to families traveling as a group. Liberal stopover privileges. Return limit 3 months.

*Certain requirements as to distance*

**Ask your Nickel Plate Ticket Agent for details.**

**SLEEPING CAR SERVICE**

**NEW YORK—BUFFALO AND CLEVELAND TO CHICAGO**

Lv. New York	10:15 A.M. (EST)
Lv. Buffalo	7:35 P.M. (EST)
Lv. Cleveland (Open 9:30 P.M.)	11:55 P.M. (EST)
Ar. Chicago	7:35 A.M. (CST)

**CHICAGO TO CLEVELAND AND BUFFALO**

Lv. Chicago (Open 9:30 P.M.)	11:20 P.M. (CST)
Ar. Cleveland	8:00 A.M. (EST)
Ar. Buffalo	12:55 P.M. (EST)

**CHICAGO AND CLEVELAND TO NEW YORK**

Lv. Chicago	10:20 A.M. (CST)
Lv. Cleveland	6:45 P.M. (EST)
Ar. New York	7:42 A.M. (EST)

**NEW YORK TO CLEVELAND AND CHICAGO**

Lv. New York	7:45 P.M. (EST)
Ar. Cleveland	9:00 A.M. (EST)
Ar. Chicago	3:40 P.M. (CST)

**CLEVELAND TO ST. LOUIS**

Lv. Cleveland	6:30 P.M. (EST)
Ar. St. Louis	7:40 A.M. (CST)

**ST. LOUIS TO CLEVELAND**

Lv. St. Louis	7:00 P.M. (CST)
Ar. Cleveland	8:45 A.M. (EST)





**PASSENGER STATIONS  
AND  
CITY TICKET OFFICES**

**CLEVELAND**

**UNION TERMINAL**

Public Square  
Phone CHerry 1-8200 or MAin 1-2300

**EAST CLEVELAND STATION**

Superior Ave., N. E., and Euclid Ave.  
(For information and reservations, phone Union Terminal—CHerry 1-8200)

**ROCKY RIVER STATION**

Lakewood Phone EDison 1-0402

**CHICAGO**

**LA SALLE STREET STATION**

Van Buren and La Salle Streets  
Reservations and Information—Phone WAsh 2-2780

**ENGLEWOOD UNION STATION**

63rd Street Phone PLaza 2-4947

**CONSOLIDATED TICKET OFFICE**

163 W. Jackson Blvd. Phone WAsh 2-2780

**HOTEL TICKET OFFICES—**

Knickerbocker, Morrison, Palmer House, Sherman, Conrad Hilton, Merchandise Mart, Prudential Bldg.

Phone HArrison 7-2203

**BUFFALO**

**LACKAWANNA TERMINAL**

Foot of Main Street Phone WAshington 4800

**PASSENGER DEPARTMENT**

1220 Prudential Bldg. 28 Church Street

H. G. Hedin, District Passenger Agent

Phone WAshington 3440

**ST. LOUIS**

**UNION STATION**

18th and Market Streets

Phone GEneva 6-2500 (Information)

and GArlfield 1-6600 (Reservations)

**PASSENGER DEPARTMENT  
AND CITY TICKET OFFICE**

300 Landreth Bldg. 320 North Fourth Street

K. C. TIFFANY, General Agent

Phone CHestnut 1-7360

**FT. WAYNE**

**PASSENGER STATION**

513 So. Calhoun St. Phone ANthony 3157

(1½ blocks north of Courthouse)

C. L. NEAL, Ticket Agent

**For Fast, Dependable Service**

**SHIP RAILWAY EXPRESS**

**Safe • Swift • Sure**

**TRANSFERRING LUGGAGE AND PASSENGERS  
BETWEEN DEPOTS IN CHICAGO**

Passengers holding tickets through Chicago and having 3 hours or more between trains may deliver their hand luggage to the Railroad Transfer Service desk at the incoming depots for delivery to the parcel checking rooms of the outgoing depots, at cost of 25c per piece, plus the usual parcel checking fees.

The transfer coupon — included as part of your through ticket — also entitles you to transfer service from your incoming depot to your outgoing depot.

Ask any Ticket Agent about

**RAILROAD TRANSFER SERVICE**

**RAIL-AUTO SERVICE**

Train Passengers may make arrangements, when purchasing rail tickets, for the use of personal automobile service in many of the larger cities throughout the United States and Canada.

Arrangements for this service have been made between the railroads, Hertz Rent-A-Car System and local drive-yourself companies.

Cities served by the Nickel Plate Road where Drivurself service is available are indicated in the Station Index on pages 3 and 4 of this timetable.

Ask your local Nickel Plate Road ticket agent for further detailed information and charges for this service

**TRAVELERS AID**

Travelers Aid is a social service specializing in assistance to people away from home. Information, direction and help with any type of personal problem are available to all passengers. Look for the blue and white lamp in major terminals.

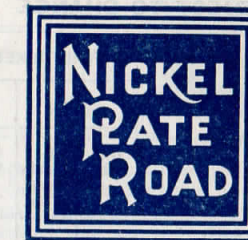
**CULVER MILITARY ACADEMY  
CULVER, INDIANA**

Culver Military Academy, on Lake Maxinkuckee, three miles from Hibbard, Ind., on the Nickel Plate Road, is the largest and most completely equipped private secondary school in the country. The Academy is located on an estate of more than one thousand acres along the north shore of the lake.

Culver is favorably known for its superb equipment, its personnel and its progressive educational methods.

Nickel Plate trains will stop at Hibbard for passengers under the conditions provided for in schedule tables. Baggage, however, must be checked to or from Knox, as the Hibbard station is closed and there is no agent on duty.

Enjoy the comfort of your own club  
on the Diner-Lounge cars of the . . . .



A smooth ride and fine food . . . help the time pass quickly.

THE friendly atmosphere, smart styling and traditionally fine service in Nickel Plate Diner-Clubs will make your next trip more enjoyable.

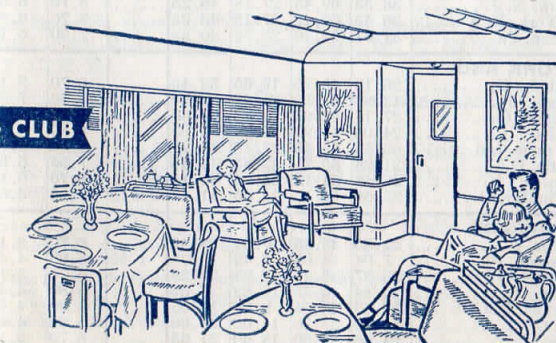
Menu extends from "snacks" to charcoal broiled steaks to suit your taste, meticulously prepared by Nickel Plate chefs, and served by competent waiters. Reasonable prices.

The lounge sections of these luxurious cars offer pleasant accommodations for relaxation and refreshments.

**NEW DINER - CLUB**

Diner-Lounge car service is available between —

- Chicago and Cleveland . . . . Trains 5 and 6
- Chicago and Buffalo . . . . Trains 7 and 8
- Cleveland and Lima . . . . Trains 9 and 10





# RAILROAD AND PULLMAN RATES

SUBJECT TO CHANGE

(Federal Tax Additional)

BETWEEN	RAIL TICKET FARES				ONE-WAY PULLMAN RATES											
	In Pullman		In Coaches		Seat	Lower Berth A	Upper Berth A	Roomette One Person	Bedroom		Bed-room Suite Two or More Persons	Compartment A		Drawing Room A		
	One Way	6-Months Round Trip	One Way	6-Months Round Trip					One Person	Two Persons		One Person	Two or more Persons	One Person	Two or more Persons	
<b>BUFFALO AND</b>																
Ashtabula, O.	\$ 6.37	\$12.74	\$ 4.84	\$ 9.68	\$ 1.35	\$ 5.80	\$ 4.40	\$ 8.10	\$10.90	\$12.75	\$21.85	\$11.55	\$13.85	\$15.90	\$19.35	
Chicago, Ill.	24.48	46.70	17.99	31.00	4.30	6.70	5.15	9.40	12.75	14.65	25.45	13.40	16.05	18.40	22.40	
Cleveland, O.	9.20	18.40	6.87	13.74	1.80	5.80	4.40	8.10	10.90	12.75	21.85	11.55	13.85	15.90	19.35	
Erie, Pa.	4.39	8.78	3.27	6.55	1.15	5.80	4.40	8.10	10.90	12.75	21.85	11.55	13.85	15.90	19.35	
Ft. Wayne, Ind.	18.45	36.00	13.87	25.55	3.50	5.80	4.40	8.10	10.90	12.75	21.85	11.55	13.85	15.90	19.35	
Fostoria, O.	13.98	27.75	10.52	20.40	2.70	5.80	4.40	8.10	10.90	12.75	21.85	11.55	13.85	15.90	19.35	
Hammond, Ind.	24.48	46.70	17.99	31.00	4.30	6.70	5.15	9.40	12.75	14.65	25.45	13.40	16.05	18.40	22.40	
Lorain, O.	10.51	21.02	7.92	15.84	2.15	5.80	4.40	8.10	10.90	12.75	21.85	11.55	13.85	15.90	19.35	
North Findlay, O.	14.56	28.85	10.97	21.20	2.85	5.80	4.40	8.10	10.90	12.75	21.85	11.55	13.85	15.90	19.35	
<b>CHICAGO AND</b>																
Ashtabula, O.	18.66	36.35	13.81	25.45	3.45	5.80	4.40	8.10	10.90	12.75	21.85	11.55	13.85	15.90	19.35	
Bellevue, O.	13.59	26.95	10.22	20.00	2.50	5.80	4.40	8.10	10.90	12.75	21.85	11.55	13.85	15.90	19.35	
Binghamton, N. Y.	34.66	65.90	25.60	43.55	3.50	8.70	6.65	12.20	16.65	19.20	33.30	17.45	20.90	23.95	29.20	
Buffalo, N. Y.	24.48	46.70	17.99	31.00	4.30	6.70	5.15	9.40	12.75	14.65	25.45	13.40	16.05	18.40	22.40	
Cleveland, O.	15.86	31.30	11.66	22.30	2.95	5.80	4.40	8.10	10.90	12.75	21.85	11.55	13.85	15.90	19.35	
Elmira, N. Y.	31.74	60.40	23.47	39.95	3.50	7.55	5.65	10.55	14.40	16.65	28.80	15.10	18.10	20.75	25.25	
Erie, Pa.	20.38	39.50	14.99	27.15	3.80	5.80	4.40	8.10	10.90	12.75	21.85	11.55	13.85	15.90	19.35	
Findlay, O. (See North Findlay)	7.36	14.72	5.58	11.16	1.50	5.80	4.40	8.10	10.90	12.75	21.85	11.55	13.85	15.90	19.35	
Ft. Wayne, Ind.	11.92	23.84	9.03	17.95	2.00	5.80	4.40	8.10	10.90	12.75	21.85	11.55	13.85	15.90	19.35	
Lorain, O.	15.39	30.40	11.63	22.25	2.70	5.80	4.40	8.10	10.90	12.75	21.85	11.55	13.85	15.90	19.35	
Newark, N. J.	42.87	81.50	31.66	53.85	3.50	10.20	7.80	14.40	19.45	22.50	38.95	20.45	24.50	28.10	34.25	
New York, N. Y.	42.87	81.50	31.66	53.85	3.50	10.20	7.80	14.40	19.45	22.50	38.95	20.45	24.50	28.10	34.25	
North Findlay, O.	11.27	22.54	8.56	17.10	2.00	5.80	4.40	8.10	10.90	12.75	21.85	11.55	13.85	15.90	19.35	
Scranton, Pa.	37.64	71.60	27.83	47.40	3.50	9.50	7.15	13.25	18.15	20.95	36.25	19.05	22.85	26.20	31.90	
<b>CLEVELAND AND</b>																
Binghamton, N. Y.	19.35	37.60	14.51	26.50	2.50	5.80	4.40	8.10	10.90	12.75	21.85	11.55	13.85	15.90	19.35	
Buffalo, N. Y.	9.20	18.40	6.87	13.74	1.80	5.80	4.40	8.10	10.90	12.75	21.85	11.55	13.85	15.90	19.35	
Chicago, Ill.	15.86	31.30	11.66	22.30	2.95	5.80	4.40	8.10	10.90	12.75	21.85	11.55	13.85	15.90	19.35	
Elmira, N. Y.	16.46	32.40	12.38	23.40	2.50	5.80	4.40	8.10	10.90	12.75	21.85	11.55	13.85	15.90	19.35	
Erie, Pa.	4.88	9.76	3.64	7.28	1.15	5.80	4.40	8.10	10.90	12.75	21.85	11.55	13.85	15.90	19.35	
Findlay, O.	5.54	11.08	4.19	8.38	1.25	5.80	4.40	8.10	10.90	12.75	21.85	11.55	13.85	15.90	19.35	
Ft. Wayne, Ind.	9.35	18.70	6.98	13.96	1.90	5.80	4.40	8.10	10.90	12.75	21.85	11.55	13.85	15.90	19.35	
Frankfort, Ind.	14.21	28.20	10.71	20.75	2.50	5.80	4.40	8.10	10.90	12.75	21.85	11.55	13.85	15.90	19.35	
Hammond, Ind.	15.86	31.30	11.66	22.30	2.95	5.80	4.40	8.10	10.90	12.75	21.85	11.55	13.85	15.90	19.35	
Lima, O.	7.12	14.24	5.31	10.62	1.50	5.80	4.40	8.10	10.90	12.75	21.85	11.55	13.85	15.90	19.35	
Muncie, Ind.	11.33	22.66	8.46	16.92	2.50	5.80	4.40	8.10	10.90	12.75	21.85	11.55	13.85	15.90	19.35	
Newark, N. J.	27.17	51.65	20.21	34.40	3.50	6.70	5.15	9.40	12.75	14.65	25.45	13.40	16.05	18.40	22.40	
New York, N. Y.	27.17	51.65	20.21	34.40	3.50	6.70	5.15	9.40	12.75	14.65	25.45	13.40	16.05	18.40	22.40	
North Findlay, O.	5.46	10.92	4.10	8.20	1.20	5.80	4.40	8.10	10.90	12.75	21.85	11.55	13.85	15.90	19.35	
St. Louis, Mo.	25.37	48.25	18.91	32.20	3.50	6.70	5.15	9.40	12.75	14.65	25.45	13.40	16.05	18.40	22.40	
Scranton, Pa.	22.35	43.00	16.72	29.40	3.50	5.80	4.40	8.10	10.90	12.75	21.85	11.55	13.85	15.90	19.35	
<b>FORT WAYNE AND</b>																
Binghamton, N. Y.	28.63	54.45	21.48	36.55	3.50	7.55	5.65	10.55	14.40	16.65	28.80	15.10	18.10	20.75	25.25	
Buffalo, N. Y.	18.45	36.00	13.87	25.55	3.50	5.80	4.40	8.10	10.90	12.75	21.85	11.55	13.85	15.90	19.35	
Chicago, Ill.	7.36	14.72	5.58	11.16	1.50	5.80	4.40	8.10	10.90	12.75	21.85	11.55	13.85	15.90	19.35	
Cleveland, O.	9.35	18.70	6.98	13.96	1.90	5.80	4.40	8.10	10.90	12.75	21.85	11.55	13.85	15.90	19.35	
Elmira, N. Y.	25.71	48.90	19.36	33.00	3.50	6.70	5.15	9.40	12.75	14.65	25.45	13.40	16.05	18.40	22.40	
Erie, Pa.	14.15	28.10	10.59	20.60	2.85	5.80	4.40	8.10	10.90	12.75	21.85	11.55	13.85	15.90	19.35	
Newark, N. J.	36.53	69.45	27.18	46.25	3.50	8.70	6.65	12.20	16.65	19.20	33.30	17.45	20.90	23.95	29.20	
New York, N. Y.	36.53	69.45	27.18	46.25	3.50	8.70	6.65	12.20	16.65	19.20	33.30	17.45	20.90	23.95	29.20	
Scranton, Pa.	31.61	60.10	23.72	40.35	3.50	7.90	6.10	11.05	15.10	17.50	30.15	15.85	19.00	21.75	26.55	
<b>NEW YORK AND</b>																
Ashtabula, O.	26.13	49.70	19.65	33.45	3.50	6.70	5.15	9.40	12.75	14.65	25.45	13.40	16.05	18.40	22.40	
Chicago, Ill.	42.87	81.50	31.66	53.85	3.50	10.20	7.80	14.40	19.45	22.50	38.95	20.45	24.50	28.10	34.25	
Cleveland, O.	27.17	51.65	20.21	34.40	3.50	6.70	5.15	9.40	12.75	14.65	25.45	13.40	16.05	18.40	22.40	
Erie, Pa.	24.06	45.95	18.06	31.05	3.50	5.80	4.40	8.10	10.90	12.75	21.85	11.55	13.85	15.90	19.35	
Ft. Wayne, Ind.	36.53	69.45	27.18	46.25	3.50	8.70	6.65	12.20	16.65	19.20	33.30	17.45	20.90	23.95	29.20	
Fostoria, O.	31.96	60.75	23.85	40.60	3.50	7.55	5.65	10.55	14.40	16.65	28.80	15.10	18.10	20.75	25.25	
Lorain, O.	28.49	54.15	21.23	36.15	3.50	6.70	5.15	9.40	12.75	14.65	25.45	13.40	16.05	18.40	22.40	
No. Findlay, O.	32.66	62.10	24.35	41.45	3.50	7.55	5.65	10.55	14.40	16.65	28.80	15.10	18.10	20.75	25.25	
<b>ST. LOUIS AND</b>																
Bellevue, O.	22.86	43.85	17.21	29.45	3.50	6.70	5.15	9.40	12.75	14.65	25.45	13.40	16.05	18.40	22.40	
Charleston, Ill.	7.04	14.08	5.49	10.98	1.45	5.80	4.40	8.10	10.90	12.75	21.85	11.55	13.85	15.90	19.35	
Cleveland, O.	25.37	48.25	18.91	32.20	3.50	6.70	5.15	9.40	12.75	14.65	25.45	13.40	16.05	18.40	22.40	
Findlay, O.	20.84	40.25	15.82	27.05	2.50	5.80	4.40	8.10	10.90	12.75	21.85	11.55	13.85	15.90	19.35	
Frankfort, Ind.	12.66	25.25	9.68	19.05	2.50	5.80	4.40	8.10	10.90	12.75	21.85	11.55	13.85	15.90	19.35	
Lima, O.	19.30	37.50	14.60	26.60	2.50	5.80	4.40	8.10	10.90	12.75	21.85	11.55	13.85	15.90	19.35	
Lorain, O.	24.66	47.00	18.60	31.60	3.50	6.70	5.15	9.40	12.75	14.65	25.45	13.40	16.05	18.40	22.40	
Muncie, Ind.	15.06	29.80	11.45	21.90	2.50	5.80	4.40	8.10	10.90	12.75	21.85	11.55	13.85	15.90	19.35	

### ★Minimum Railroad Ticket Requirements

The use of certain types of Pullman accommodations requires presentation of a minimum number of railroad tickets.

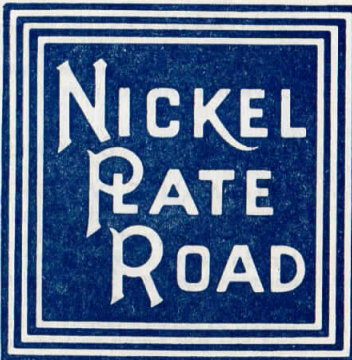
The minimum number of adult railroad tickets (valid in all classes of Pullman accommodations) required for occupancy of various types of rooms are:

- In Sleeping Cars (See Note below for Family Fare ticket requirements.)
- Roomette.....1
  - Single Bedroom.....1
  - Double Bedroom.....1
  - Bedroom Suite.....2
- Compartment, berth service.....1
- Compartment, seat service.....1 1/2
- Drawing Room, berth service.....1 1/4
- Drawing Room, seat service.....2



## IN PLANT LOCATION STUDIES *Your Time Is Valuable*

Cut costs and save time by using our services in securing information on available land sites, utilities, tax rates, transportation needs and other requirements for your particular project.



Available to you . . . a skilled and experienced staff for specialized research and surveys on industrial or agricultural inquiries.

M. H. Markworth, Industrial Commissioner  
C. E. Smith, Industrial Agt.  
T. D. Gillett, Industrial Agt.  
J. R. Elliott, Asst. Industrial Agt.



**GENERAL OFFICES: TERMINAL TOWER, CLEVELAND, OHIO**  
**PHONE MAIN 1-9000**  
**DIRECTORY OF TRAFFIC DEPARTMENT**



S. J. WITT, Vice President, Cleveland 1, Ohio  
JOHN J. FITZPATRICK, Asst. Vice President (Sales), Cleveland 1, Ohio  
C. GORDON CRUICKSHANK, Asst. Vice President (Rates), Cleveland 1, Ohio  
C. H. WARE, Asst. to Vice President, Cleveland 1, Ohio

### ■ PASSENGER ■

E. D. PIPER, Asst. Gen. Pass. Agt., Cleveland 1, Ohio  
R. G. WOOD, Asst. Gen. Pass. Agt., Chicago 4, Ill.  
J. E. McINNIS, Gen. East. Pass. Agt., New York 7, N. Y.  
CHAS. H. GARN, Gen. Pass. Agent, Cleveland 1, Ohio  
H. G. HEDIN, Dist. Pass. Agent, Buffalo 2, N. Y.  
K. C. TIFFANY, Gen. Agt., Pass. Dept., St. Louis 2, Mo.  
J. T. BRENNAN, Gen. Agt., Pass. Dept., Cleveland 1, O.  
W. H. JAMES, Gen. Agt., Pass. Dept., Ft. Wayne 2, Ind.  
R. W. MEYER, Dist. Pass. Agt., Milwaukee 3, Wis.

### ■ FREIGHT ■

A. B. BIERDEMAN, Frt. Traf. Mgr., New York 7, N. Y.  
H. A. EBERHART, Frt. Traf. Mgr. (Rates), Cleveland 1, Ohio.  
W. E. ERLBACH, Frt. Traf. Mgr., Cleveland 1, Ohio.  
W. D. KELLEY, Frt. Traf. Mgr., San Francisco 5, Calif.  
E. F. SCHIER, Frt. Traf. Mgr., St. Louis 2, Mo.  
T. A. WEYBRECHT, Frt. Traf. Mgr., Cleveland 1, Ohio.  
H. WILDING, Frt. Traf. Mgr., Chicago 4, Ill.  
A. E. PFAFF, Asst. Frt. Traf. Mgr. (Rates), Cleveland 1, Ohio.  
F. G. ALTENBURG, Gen. Frt. Agt., Chicago 4, Ill.  
A. E. BARTLETT, Gen. Frt. Agt., Cleveland 1, Ohio.  
K. B. CHILCOT, Gen. Frt. Agt., Cleveland 1, Ohio.  
H. E. DRAPER, Gen. Frt. Agt., Indianapolis 4, Ind.  
H. EASTERDAY, Gen. Frt. Agt., St. Louis 2, Mo.  
A. E. HERRMANN, Gen. Frt. Agt., Buffalo 2, N. Y.  
R. A. JULIAN, Gen. Frt. Agt., New York 7, N. Y.  
S. SHAPIRO, Gen. Frt. Agt. (Rates), Cleveland 1, Ohio.  
E. T. BORCHERT, Asst. Gen. Frt. Agt., Cleveland 1, Ohio.  
E. P. CILLEY, Asst. Gen. Frt. Agt. (Rates), Cleveland 1, Ohio.  
A. J. HAAS, Asst. Gen. Frt. Agt., Chicago 4, Ill.  
A. J. HELLSSTROM, Asst. Gen. Frt. Agt., New York 7, N. Y.  
H. B. LEWIS, Asst. Gen. Frt. Agt., Chicago 4, Ill.  
L. J. PEPPER, Asst. Gen. Frt. Agt., Cleveland 1, Ohio.  
L. S. REECE, Asst. Gen. Frt. Agt., Cleveland 1, Ohio.  
L. J. SCHIRMER, Asst. Gen. Frt. Agt. (Rates), Cleveland 1, Ohio.  
G. P. WALSH, Asst. Gen. Frt. Agt., Cleveland 1, Ohio.  
R. S. TOLAN, Chief of Tariff Bureau, Cleveland 1, Ohio.  
N. E. GOLDENBOGEN, Coal Traf. Mgr., Cleveland 1, Ohio.  
W. C. MAYO, Asst. Coal Traf. Mgr., Cleveland 1, Ohio.  
O. W. EISEMON, Gen. Coal Frt. Agt., Chicago 4, Ill.  
J. A. KEMPER, Coal Frt. Agt., Chicago 4, Ill.  
E. T. REILLY, Coal Freight Agent, Cincinnati 2, Ohio.  
P. A. WHITE, Coal Freight Agent, Cleveland 1, Ohio.

### TRAFFIC REPRESENTATIVES

**Akron, Ohio**—Phone JEFFerson 5-3215.  
**Albany 7, N. Y.**—10 The Plaza  
D. R. GANN, Gen. Agent—Phone 5-5366.  
**Atlanta 3, Ga.**—Room 714, 101 Marietta St. Bldg.  
Phone JACKson 2-2522.  
J. H. HAMPTON, General Agent.  
**Baltimore 2, Md.**—1709 Mathieson Bldg.  
Phone MULberry 5-5464.  
L. F. MACMILLAN, General Agent.  
**Birmingham 3, Ala.**—910-912 Brown-Marx Bldg.  
J. C. SROUL, General Agent—  
Phone ALPine 1-7466.  
**Boston 8, Mass.**—740 Old South Bldg.,  
294 Washington St.—Phone LIBerty 2-3655.  
O. D. S. GETZFREAD, General Agent.  
W. A. GEORGE, Gen. Agt.—Perishables.  
**Buffalo 2, N. Y.**—Prudential Bldg., 28 Church St.  
H. G. HEDIN, District Passenger Agent.  
Room 1220—Phone WASHINGTON 3440.  
A. E. HERRMANN, Gen. Freight Agent.  
Room 1228—Phone CLEVELAND 0702.  
**Canton 2, Ohio**—900 Renkert Bldg.  
B. F. BRUCE, Div. Frt. Agt.  
Phone GLENdale 6-8321.  
**Chicago 4, Ill.**—327 South La Salle St.—  
Phone WABash 2-2780.  
R. G. WOOD, Asst. Gen. Pass. Agent.  
A. LAPOINTE, Trav. Pass. Agent.  
F. G. ALTENBURG, General Freight Agent.  
**Cincinnati 2, Ohio**—1415 Enquirer Bldg.,  
617 Vine St.—Phone MAIN 1-1475.  
F. M. HELMS, General Agent.  
**Cleveland 1, Ohio**—Terminal Tower—  
Phone MAIN 1-9000.  
J. T. BRENNAN, Gen. Agt. Pass. Dept.  
A. E. BARTLETT, General Freight Agent.  
L. J. PEPPER, Asst. Gen. Frt. Agt.  
**Columbus 15, Ohio**—418 Atlas Bldg., 8 E. Long  
—Phone CAPITAL 4-1277.  
F. E. DITCH, General Agent.  
**Dallas 1, Tex.**—1220 Kirby Bldg.  
F. C. MOSLEY, Gen. Agt.—Phone RIVERSide 2-7361.  
**Davenport, Iowa**—326 W. Third Street.  
H. A. GILMORE, Gen. Agent—Phone 2-3505.  
**Denver 2, Colo.**—610 Railway Exchange Bldg.  
J. R. REED, General Agent—Phone MAIN 3-6680.  
**Detroit 2, Mich.**—8-123 Gen. Motors Bldg.—  
Phone TRINity 2-6700.  
J. T. GRANT, General Agent.  
**Erie 2, Pa.**—  
H. G. REICHEL, Division Freight Agent.  
1002 Palace Hardware Bldg.—Phone 2-3552.  
H. M. LOBB, Ticket Agt.—Phone 2-4397.  
Passenger Station, 211 E. 19th Street.  
**Eugene, Ore.**—Phone Commerce 9849.  
**Fort Wayne 2, Ind.**—  
W. H. JAMES, Gen. Agt. Pass. Dept.  
Pass. Station, Calhoun St.—Phone ANTHONY 3157.  
J. D. SNEARLINE, Division Freight Agent.  
14-15 Gaskins Bldg.—Phone ANTHONY 6136.  
**Grand Rapids 2, Mich.**—1003 Mich. Nat'l  
Bank Bldg.—Phone GLENdale 6-8701.  
ROBERT P. MURRAY, General Agent.  
**Houston 2, Tex.**—920 Bankers Mortgage Bldg.—  
Phone CAPITOL 8-4048.  
R. J. BRENT, General Agent.  
**Indianapolis 4, Ind.**—1006 Merch. Bank Bldg.—  
Phone MELrose 7-3320 and 7-3328.  
H. E. DRAPER, General Freight Agent.  
**Kansas City 5, Mo.**—358 Board of Trade Bldg.  
Phone VICTOR 2-4366.  
J. A. FLANAGAN, General Agent.  
**Lafayette, Ind.**—101 South St.—Phone 2-7401.  
L. I. MUINZER, Gen. Agt. Traf. & Oper. Depts.  
**Los Angeles 14, Calif.**—Rooms 320-321,  
510 W. 6th St. Bldg.—Phone TUCKer 1546.  
M. L. BECKER, General Agent.  
**Louisville 2, Ky.**—841 Commonwealth Bldg.  
A. E. ORSINGER, Gen. Agt.—Ph. JUNiper 5-2442.  
**Memphis 3, Tenn.**—1322 Exchange Bldg.  
F. W. MORTON, Gen. Agt.—Phone JACKson 6-7801.  
**Milwaukee 3, Wis.**—231 W. Wisconsin Ave.—  
Phone BRoadway 1-1758.  
R. W. MEYER, District Passenger Agent.  
E. J. HOFFMAN, General Agent.  
**Minneapolis 1, Minn.**—1114 Metropolitan Life  
Bldg.—Phone FEDERAL 3-7511.  
J. C. JONES, General Agent.  
**Muncie, Ind.**—621 South High St.  
L. O. WARD, General Agent—Phone ATLAS 8-4419.  
**New Orleans 12, La.**—1701 Pere Marquette  
Bldg.—Phone RAYmond 1720.  
ALAN DU QUESNAY, General Agent.  
**New York 7, N. Y.**—1460 Woolworth Bldg.—  
Phone DIGby 9-2682.  
J. E. McINNIS, Gen. Eastern Passenger Agent.  
R. A. JULIAN, General Freight Agent.  
**Omaha 2, Neb.**—515 Grain Exchange Bldg.—  
Phone ATLantic 8020.  
L. K. RHODES, General Agent.  
**Peoria 2, Ill.**—611 Com'l Nat. Bank Bldg.—  
Phone 4-5115.  
H. W. WITTMAN, Div. Frt. & Pass. Agent.  
**Philadelphia 2, Pa.**—1905 Finance Bldg.—  
Phone RITtenhouse 6-4381.  
J. M. THISTLE, General Agent.  
**Pittsburgh 22, Pa.**—424 Oliver Bldg.—  
Phone ATLantic 1-4980.  
P. E. NEEHAM, General Agent.  
**Portland 5, Ore.**—301 The Pittock Block,  
921 S. W. Washington St.—  
Phone CAPITAL 2-1849.  
P. E. SWINGLE, General Agent.  
**St. Louis 2, Mo.**—300 Landreth Bldg.  
320 N. Fourth St.—Phone CHEstnut 1-7360.  
K. C. TIFFANY, Gen. Agt. Passenger Dept.  
D. W. O'LEARY, General Agent.  
**Salt Lake City 1, Utah**—212 Beason Bldg.  
J. R. REED, Gen. Agt.—Phone ELGIN 9-0332.  
**San Francisco 5, Calif.**—681 Market St.  
Phone YUKon 6-1910.  
O. J. BENES, General Agent.  
**Seattle 1, Wash.**—907 White Bldg.  
L. M. CURTIN, Gen. Agt.—Phone MUTual 1935.  
**Shreveport, La.**—519 Shreveport Medical Arts  
Bldg.—Phone 4-3694.  
V. S. PAINTER, General Agent.  
**Toledo 1, Ohio**—Nickel Plate Bldg., 340 S. Erie  
St.—Phone CHerry 1-1241.  
C. A. MADIGAN, Division Freight Agent.  
**Tulsa 3, Okla.**—305 Thompson Bldg.  
M. S. BAKER, Gen. Agent—Ph. LUTher 3-5880.  
**Washington 5, D. C.**—427 Woodward Building—  
Phone NATIONAL 8-9210.  
JACQUES GROSS, General Agent.  
**Wheeling, W. Va.**—606-607 Hawley Bldg.  
A. W. LLOYD, Div. Frt. Agt.—Phone CEDar 3-1150.