

GENERAL INFORMATION

The time tables show the time at which trains may be expected to arrive and depart from stations and to connect with other trains, but departure or arrival or connection at time stated is not guaranteed. This Company reserves the right to vary from the time shown in this folder without notice.

It is our aim to render satisfactory service, and passengers are requested to report any instance of inattention or discourtesy on the part of employees.

TICKET OFFICES are open a sufficient time before the departure of trains to permit the purchase of tickets, and passengers are requested to do so before boarding the train; however some small station offices are closed on Saturday, Sunday and Holidays, and tickets should be purchased in advance at such points.

CHILDREN under five years of age will be carried free when accompanied by parent or guardian; five years of age and under twelve, half fare; twelve years of age and over, full adult fare.

REDEMPTION OF TICKETS. Wholly unused tickets of this Company's issue may be redeemed at the same office where ticket was purchased if presented by original purchaser within two months from date of sale.

Application for redemption of unused portions of tickets of this Company's issue, also wholly unused tickets which have not been presented for redemption at office where sold within two months' period, should be made to Passenger Traffic Manager, L & N Railroad, Louisville, Ky. 40201.

STOP-OVERS. One-way tickets are limited to thirty (30) days in addition to date of sale, and stop-overs may be made at any station enroute within final limit of ticket. To secure stop-over passenger should notify the conductor who will endorse ticket and return to passenger. Passengers having availed themselves of stop-over privilege at one or more points must resume use of tickets in time to reach destination before final limit expires.

Stop-overs are also allowed at all points on the Louisville and Nashville Railroad within final limit of Round-Trip tickets by application to conductor. Information regarding stop-overs may be secured from passenger representatives listed in opposite column, or from any L. & N. ticket agent.

HONORING TICKETS TO NON-STOP STATIONS. Passengers holding tickets to stations at which through trains do not stop, will be required to transfer at some intermediate point (usually the last regular terminal point short of destination) and to use next following local train which is scheduled to stop at destination.

BAGGAGE REGULATIONS

DEFINITION OF BAGGAGE. Personal wearing apparel, toilet articles except liquids, and other personal effects in actual use and necessary for the comfort and convenience of the passenger. Money, jewelry, negotiable papers and like valuables, fragile or perishable articles, radios, phonographs and records and household goods must not be included in checked baggage.

BAGGAGE SERVICE CHARGE: A service charge of 25c for each hand bag and 50c for each trunk, will be made at time of checking at L & N stations.

MARKING FOR IDENTIFICATION. Tag each piece of baggage with name and address; place name and permanent address inside each piece.

ALLOWANCE: For each full fare ticket, 150 pounds, value \$100.00; for each half fare ticket, 75 pounds, value \$50.00. Passengers may declare excess value at nominal charge of 25c for each additional \$100.00 or fraction thereof.

WEIGHT AND LIABILITY. Baggage weighing in excess of the above free allowances will be charged for in accordance with published tariffs. No single piece of baggage weighing more than 300 pounds, or valued at more than \$2,500.00, or cardboard cartons weighing more than 50 pounds, will be transported as baggage, but must be sent by express or freight.

BAD CONDITION. Baggage too frail to withstand necessary handling will not be accepted for transportation in baggage cars. When baggage is received at destination in damaged condition, this fact must be called to agent's attention at time of delivery.

FORWARDING. Passengers are urged to check baggage in advance. Railroad cannot guarantee forwarding of baggage on same train with Passenger, nor can time of arrival at destination be guaranteed.

LOST ARTICLES. Make inquiry to Passenger Traffic Manager, L. & N. R.R., Louisville, Ky. 40201, or nearest representative.

NO RESPONSIBILITY IS ASSUMED for unchecked articles left in stations or cars.

TRAVEL PROBLEMS?
ASK L. & N.'S PASSENGER
REPRESENTATIVES FOR ASSISTANCE

The Louisville and Nashville Railroad maintains Passenger Sales and Service offices at the addresses shown below:

ATLANTA, GEORGIA (30303)

W. Ralph Gregory,
Union Station
2 Forsyth St., N.W.,
Phone: 523-2777 (Area-404)

BIRMINGHAM, ALABAMA (35203)

John D. Lee,
L. & N. Station
1821 Morris Ave.,
Phone: 322-0341 (Area-205)

CHICAGO, ILLINOIS (60603)

John J. Houliban,
718 Bankers Bldg.,
105 W. Adams St.,
Phone: 372-7595 (Area-312)

CINCINNATI, OHIO (45203)

Milton J. Eckhoff,
Room N-303
Cincinnati Union Terminal
Phone: 621-2574 (Area-513)

LOUISVILLE, KENTUCKY (40203)

Louis R. Worley,
Union Station
10th & Broadway,
Phone: 585-5325 (Area-502)

MIAMI, FLORIDA (33131)

Mrs. Eleanor H. Gray,
1137 Ingraham Bldg.,
2nd Ave. and First St., S.E.,
Phone: 373-0911 (Area-305)

MOBILE, ALABAMA (36602)

Harvey T. Schneider,
L. & N. Station
11 Government Street,
Phone: 432-2777 (Area-205)

MONTGOMERY, ALABAMA (36104)

Robert A. Laun,
Union Station
300 Water St.
Phone: 263-3757 (Area-205)

NASHVILLE, TENNESSEE (37203)

T. Hammond Nowell,
Union Station
10th & Broadway,
Phone: 254-0565 (Area-615)

NEW ORLEANS, LOUISIANA (70113)

Edwin S. Middleton,
216 Union Passenger Terminal
1001 Loyola Ave.,
Phone: 522-4191 (Area-504)

NEW YORK, NEW YORK (10017)

Robert N. Barry,
3107 Daily News Bldg.,
220 E. 42nd St.,
Phone: 867-3200 (Area-212)

PENSACOLA, FLORIDA (32502)

Sam H. Wilboite,
L. & N. Station
Alcaniz & Wright St.,
Phone: 432-8484 (Area-904)

You may also direct inquiries to:

ROBERT P. ETHRIDGE
PASSENGER TRAFFIC MANAGER
LOUISVILLE AND NASHVILLE RAILROAD
908 W. BROADWAY
P.O. BOX 1198
LOUISVILLE, KENTUCKY 40201

L & N

PASSENGER TRAIN
TIME TABLES

December 15, 1967

LOUISVILLE
AND
NASHVILLE
RAILROAD

L & N

PASSENGER TRAIN
TIME TABLES

December 15, 1967

LOUISVILLE
AND
NASHVILLE
RAILROAD

CINCINNATI and NEW ORLEANS CINCINNATI and MEMPHIS

READ DOWN				READ UP			
The South Wind	The Crescent	The Humming Bird	The Pan-American	The Pan-American	The Crescent	The Humming Bird	The South Wind
15 See Note 1	7 Daily	7 Daily	9 Daily	8 Daily	8 Daily	6 Daily	16 See Note 1
PM 4.05	PM From New York; see Table D, page 3, for details.	PM 7.40 10.45 11.10	AM 9.45 12.55 1.20	PM 9.45 6.30 6.05	AM 8.10 5.00 4.35	PM 8.10 5.00 4.35	PM 12.50
C 5.05		12.20	M 1.57	M 3.17			C 9.37
		12.55 8.40	2.34	2.48		1.20	
C 5.05 6.28 6.35 8.44 10.23 10.35 12.30 AM		12.05 2.20	2.34 4.10 4.35 6.58 8.50 9.15 11.25 11.50 2.15	2.48 1.10 12.45 10.16 8.30 8.10 6.00 5.20 2.35	1.00 11.35 10.50 8.15 6.25 6.10 4.10 3.40 1.50 AM	C 9.37 8.15 8.00 5.37 3.55 3.40 1.50 AM	
		B 3.30 4.40	3.25 4.35	2.00 12.45	2.00 12.45	12.50 11.40	
		2.20 3.50 4.15 5.40 6.00 6.25 8.10 PM	2.45 4.30 5.00 6.32 6.56 7.21 9.20 AM	2.10 12.40 12.15 10.46 10.22 9.56 8.30	2.10 12.40 12.15 10.46 10.22 9.56 8.30	12.55 11.40 11.25 10.07 9.51 8.15	

EQUIPMENT—THE HUMMING BIRD
 Sleepers (500-600) Cincinnati New Orleans 6 Sections, 6 Roomettes, 4 Double Bedrooms
 Louisville Atlanta 6 Sections, 6 Roomettes, 4 Double Bedrooms
 Coaches Cincinnati New Orleans Reclining Seats
 Cincinnati Memphis Reclining Seats
 Diner-Lounge Cincinnati Louisville
 Nashville New Orleans

EQUIPMENT—THE PAN AMERICAN
 Sleepers (61-62) Cincinnati New Orleans 6 Sections, 6 Roomettes, 4 Double Bedrooms
 Coaches Cincinnati New Orleans Reclining Seats
 Counter-Lounge Cincinnati Montgomery Complete Meal Service
 Dining Car Mobile New Orleans

CINCINNATI-MEMPHIS

READ DOWN		READ UP	
The Humming Bird	Miles	The Humming Bird	Miles
7-14 Daily		19-6 Daily	
PM 7.40 11.10 12.20	0 114 228	AM 8.10 5.00 1.20	
14		19	
12.55 1.40 2.09 2.35	228 257 278 291	12.50 11.43 10.58 10.25	
3.12	320	9.38	
f . . . 345	Lv Erlin, Tennesse River-Kentucky Lake	8.44	
4.10 361	Lv Big Sandy	8.06	
4.45 378	Lv Paris	7.36	
4.58 388	Lv McKenzie	7.17	
5.17 398	Lv Trezevant	6.40	
5.43 410	Lv Milan	5.00	
6.05 422	Lv Humboldt	PM	
6.22 435	Lv Bells		
f . . . 8.40	Lv Brownsville		
AM	Ar Lenox		
	Ar Memphis, Tenn. *Mississippi River		

REFERENCE NOTES (Tables A and B)
 C.S.T. Central Standard Time. E.S.T. Eastern Standard Time.
 NOTE 1: See page 4, Table E, for dates of operation.
 ⊕ Cave City is Railroad Station for Mammoth Cave; taxi service from Cave City \$4.00 one way, \$7.00 round trip. Group rates available.
 ▲ No baggage handled at this station.
 ○ Operates on trains 3 and 4 between Nashville and Atlanta. See Table GG page 5.
 □ Greyhound Bus. Tickets may be exchanged at Railroad Ticket Office for tickets to be honored on Greyhound Buses between Railroad Stations.
 A Stops to leave pay passengers from New Orleans, and to take pay passengers for Mobile or beyond.
 B Tickets may be exchanged at Railroad Ticket Office for tickets to be honored on Greyhound Buses from Railroad Station, Flomaton, to Bus Station, Pensacola.
 C Stops to receive or discharge revenue passengers to or from Indianapolis, Ind., or to or from points beyond Montgomery, Ala. No checked baggage, pets, or remains.
 f Stops on signal.
 K Stops to take pay passengers to Mobile or beyond, and to leave pay passengers from New Orleans or beyond.
 L Louisville-Atlanta Sleeper open 9:30 PM EST.
 M Stops to take or leave pay passengers from or to Louisville or beyond, and to or from points beyond Bowling Green.
 N Atlanta-Louisville Sleeper may be occupied until 7:30 AM EST.
 P Stops to leave pay passengers from Mobile and beyond and to take pay passengers for New Orleans.

AIR-CONDITIONED CARS ARE REGULARLY ASSIGNED THE ABOVE TRAINS

CHICAGO—ST. LOUIS—NEW ORLEANS, VIA EVANSVILLE AND NASHVILLE

EQUIPMENT—THE HUMMING BIRD		EQUIPMENT—THE HUMMING BIRD		READ DOWN		Table C		READ UP	
Sleepers	Coaches	Dining Car	Diner-Lounge	Club-Lounge	The Humming Bird	Miles	December 15, 1967	The Humming Bird	No. 10
(935-654) Chicago-Montgomery (500-600) Cincinnati-New Orleans	Chicago-Montgomery Cincinnati-New Orleans	Chicago-Nashville	Nashville-New Orleans	Chicago-Nashville	5-7 Daily			▲ 6-4 Daily	AM
10 Rmte., 6 DBR. 6 Sec., 6 Rmte., 4 DBR.	Reclining Seats Reclining Seats				PM			AM	AM
					3.45 6.10 7.15 8.18 9.55	0 123 178 235 287			
					4.00 8.30	0 165		A 8.55 A 4.15	8.55 4.15
					10.15 G 11.18 G 12.12	287 339 374		G 3.40 G 2.13 G 1.16	
					2.15 3.30 3.30	446 446 446		Lv Chicago Lv Danville Lv Terre Haute Lv Vincennes Ar Evansville	
					5.59 7.45 8.15 10.30 12.05	556 651 651 749 749		Lv St. Louis Ar Evansville	
					B 4.40	867		Lv Evansville Ar Madisonville Ar Hopkinsville Ar Nashville Lv Nashville Ar Decatur Lv Birmingham Lv Birmingham Ar Montgomery Lv Montgomery Ar Flomaton	
					E 5.10 E 5.40 E 6.00 6.25 8.10	967 987 1000 1015 1072		Ar Pensacola Lv Flomaton Lv Mobile Lv Mobile Ar Pascagoula Ar Biloxi Ar Gulfport Ar Bay St. Louis Ar New Orleans	
					PM			AM	AM

NEW YORK and NEW ORLEANS VIA WASHINGTON AND ATLANTA

EQUIPMENT—TABLE D		EQUIPMENT—TABLE D		READ DOWN		Table D		READ UP	
Sleepers	Tavern-Lounge	Dining Car	Diner-Lounge	Coaches	The Crescent	Miles	December 15, 1967	The Crescent	
(SR-23-L-23) New York New Orleans	Washington Atlanta	New York Atlanta Greenville New York	Atlanta New Orleans	New York Washington Washington Atlanta Atlanta New Orleans	7 Daily			8	
10 Roomettes, 6 Double Bedrooms	(Light Lunch Northbound)			Reclining Seats Reclining Seats Reclining Seats	PM			AM	
(S-21) New York Atlanta (S-28) Washington Atlanta					2.00 2.16 3.26 3.35 3.55 5.05 5.45 6.10 6.10 2.25 3.58 8.00 8.25 10.05 11.40 12.05 2.20	0 10 86 86 187 227 227 604 679 864 864 973 1039 1039 1157			
					B 3.30 B 4.40	0 44		Lv New York Lv Newark Lv N. Philadelphia Lv Philadelphia (30th St.) Lv Baltimore Ar Washington Lv Washington Lv Charlotte Lv Spartanburg Ar Atlanta Lv Atlanta Lv Opelika Ar Montgomery Lv Montgomery Ar Flomaton	
					11.40 12.50			Lv Flomaton Ar Pensacola	
					2.20 3.50 4.15 5.10 5.40 6.00 6.25 8.10	1157 1217 1217 1257 1277 1290 1299 1305 1362		Lv Pensacola Lv Pensacola Lv Flomaton Ar Mobile Lv Mobile Ar Pascagoula Ar Biloxi Ar Gulfport Ar Pass Christian Ar Bay St. Louis Ar New Orleans	
					PM			AM	AM

REFERENCE NOTES
 C.S.T. Central Standard Time. E.S.T. Eastern Standard Time.
 □ Tickets may be exchanged at Railroad Ticket Office for tickets to be honored on Greyhound Buses between Railroad Stations.
 B Tickets may be exchanged at Railroad Ticket Office for tickets to be honored on Greyhound Buses from Railroad Station, Flomaton, to Bus Station, Pensacola.
 D Stops only to discharge passengers.
 f Stops on signal.
 H Stops to leave pay passengers from Mobile and beyond and to take pay passengers for New Orleans.
 J Stops to leave pay passengers from New Orleans and beyond and take pay passengers for Mobile and beyond.
 M Sleeper may be occupied until 7:00 AM EST.

CHICAGO, LOUISVILLE and FLORIDA

THE SOUTH WIND VIA MONTGOMERY

CONNECTING SERVICE FROM CINCINNATI
VIA LOUISVILLE TO FLORIDA

READ DOWN				READ UP			
The South Wind	Miles	Table E		The South Wind		Miles	
15		December 15, 1967		16			
AM	0	Lv Chicago	CST	Penna. R.R.	Ar	6.45	PM
1.37	202	Lv Indianapolis	EST	"	Ar	3.35	
3.55	313	Ar Louisville	EST	"	Lv	1.05	
R 12.55	114	Lv Cincinnati	EST	L.&N. R.R.	Ar	9.45	R
		Ar Louisville	EST	"	Lv	6.30	
D 4.05	0	Lv Louisville	EST	L.&N. R.R.	Ar	12.50	D
5.05	114	Lv Bowling Green	CST	"	Ar	9.37	
6.28	187	Ar Nashville	CST	"	Lv	8.15	
6.35	187	Lv Nashville	CST	"	Ar	8.00	
D 8.44	307	Lv Decatur	CST	"	Lv	5.37	D
10.23	392	Ar Birmingham	CST	"	Lv	3.55	
10.35	392	Lv Birmingham	CST	"	Ar	3.40	
12.30	490	Ar Montgomery	CST	"	Lv	1.50	
12.35	490	Lv Montgomery	CST	S.C.L. R.R.	Ar	1.35	
5.55	700	Ar Thomasville	EST	"	Lv	9.55	
V 7.55	805	Ar Waycross	EST	"	Lv	7.50	V
9.25	880	Ar Jacksonville	EST	"	Lv	6.30	
EAST FLORIDA POINTS							
9.50	0	Lv Jacksonville	EST	S.C.L. R.R.	Ar	6.05	
12.25	124	Ar Sanford	EST	"	Lv	2.45	
1.10	147	Ar Orlando	EST	"	Lv	2.00	
3.45	346	Ar West Palm Beach	EST	"	Lv	11.35	
4.45	389	Ar Fort Lauderdale	EST	"	Lv	10.40	
5.01	396	Ar Hollywood	EST	"	Lv	10.25	
6.00	416	Ar Miami	EST	"	Lv	10.00	
WEST FLORIDA POINTS							
10.10	0	Lv Jacksonville	EST	S.C.L. R.R.	Ar	5.25	
1.10	147	Ar Orlando	EST	"	Lv	2.00	
2.40	207	Ar Lakeland	EST	"	Lv	12.45	
5.30	310	Ar Fort Myers	EST	"	Lv	9.45	
6.40	357	Ar Naples	EST	"	Lv	8.40	
2.40	207	Lv Lakeland	EST	"	Ar	12.45	
3.30	238	Ar Tampa	EST	"	Lv	12.05	
5.15	291	Ar Sarasota	EST	"	Lv	10.10	
10.15	0	Lv Jacksonville	EST	"	Ar	5.20	
4.13	256	Ar Clearwater	EST	"	Lv	11.07	
4.55	274	Ar St. Petersburg	EST	"	Lv	10.40	

NEW ORLEANS and JACKSONVILLE

READ DOWN				READ UP			
The Gulf Wind	Miles	Table F		The Gulf Wind		Miles	
6		December 15, 1967		7			
AM	0	Lv New Orleans	CST	L.&N. R.R.	Ar	9.20	AM
8.15	8.30	Lv Mobile	CST	"	Ar	4.30	8.10
11.40	12.40	Ar Flomaton	CST	"	Lv	2.45	2.20
12.55	2.10	Lv Flomaton	CST	"	Ar	2.00	12.50
B 3.30	3.25	Ar Pensacola	CST	"	Lv	12.45	11.40
B 4.40	4.35	Lv Pensacola	CST	"	Ar	12.30	11.56
PM	4.45	Ar Milton	CST	"	Lv	11.17	10.42
C 5.21	268	Lv Crestview	CST	"	Ar	9.54	9.54
6.02	298	Ar DeFuniak Springs	CST	"	Lv	9.25	8.45
6.38	327	Lv Chipley	CST	"	Ar	9.35	9.07
C 7.28	365	Ar Marianna	CST	"	Lv	8.30	7.10
7.52	383	Lv Chattahoochee	CST	"	Ar	6.43	6.24
8.35	409	Ar Chattahoochee	EST	S.C.L. R.R.	Ar	5.30	5.30
9.35	409	Lv Chattahoochee	EST	"	Lv		
f 9.58	428	Ar Quincy	EST	"	Lv		
10.30	452	Lv Tallahassee	EST	"	Ar		
G 11.25	507	Ar Madison	EST	"	Lv		
f 11.55	534	Lv Live Oak	EST	"	Ar		
f 12.15	558	Ar Lake City	EST	"	Lv		
PM	1.35	Ar Jacksonville	EST	"	Lv		

AIR-CONDITIONED CARS ARE REGULARLY ASSIGNED THE ABOVE TRAINS

THE SOUTH WIND

STREAMLINED COACH—PULLMAN TRAIN

CHICAGO, LOUISVILLE, MIAMI, TAMPA, SARASOTA, ST. PETERSBURG

Operates Every Other Day
From CHICAGO and MIAMI

Dec. 16, 18, 20, 22, 24, 26, 28, 30, Jan. 1, 3, 5, 7, 9, 11, 13, 15, 17, 19, 21, 23, 25, 27, 29, 31, Feb. 2, 4, 6, 8, 10, 12, 14, 16, 18, 20, 22, 24, 26, 28, Mar. 1, 3, 5, 7, 9, 11, 13, 15, 17, 19, 21, 23, 25, 27, 29, 31, Apr. 2, 4, 6, 8, 10, 12, 14, 16, 18, 20, 22, 24, 26, 28, 30.

Special Service Charge for Coach Passengers.

EQUIPMENT

Dome-Lounge	(SW-95) Chicago-Miami	4 Rmte., 4 DBR, 4 Dupl. SR
Lounge	(SW-94) Chicago-Miami	6 DBR, Bar
Sleepers	(SW-93) Chicago-Miami	10 Rmte., 6 DBR
	(SW-96) Chicago-Miami	4 Cpt., 4 DBR, 2 DR
	(SW-91) Chicago-St. Petersburg	4 Sec., 4 Rmte., 5 DBR, 1 Cpt.
	(SW-92) Chicago-Sarasota	4 Sec., 4 Rmte., 5 DBR, 1 Cpt.
Dining Car	Chicago-Miami	
Diner	Jacksonville-Tampa	
Tavern-Lounge	Jacksonville-Tampa	
Cafe-Lounge	Jacksonville-St. Petersburg	
Coaches	Chicago-Miami	All Seats Reserved
	Chicago-Tampa	All Seats Reserved
	Chicago-St. Petersburg	All Seats Reserved
Coach-Lounge	Chicago-Miami	All Seats Reserved
Coaches	Lakeland-Naples	Reclining Seats
	Tampa-Sarasota	Reclining Seats

REFERENCE NOTES

C.S.T. Central Standard Time. E.S.T. Eastern Standard Time.
D Stops to receive or discharge revenue passengers to or from Indianapolis, Ind. or to or from points beyond Montgomery, Ala. No checked baggage, remains or pets.
R Connecting train.
V Oklahoma Ave.

THE GULF WIND

EQUIPMENT

Sleepers (L-12 - B-1)	New Orleans Jacksonville 6 Sec., 6 Rmte., 4 Dbl. Bed.
Dining Cars	Mobile New Orleans Chattahoochee Jacksonville
Coaches	New Orleans Jacksonville Reclining Seats

REFERENCE NOTES

C.S.T. Central Standard Time. E.S.T. Eastern Standard Time.
B Tickets may be exchanged at Railroad Ticket Office for tickets to be honored from Railroad Station, Flomaton, to Bus Station, Pensacola.
C Stops to take or leave pay passengers to or from Pensacola, Tallahassee, or beyond.
E Stops to take passengers for Tallahassee or beyond, and leave from Jacksonville or beyond.
f Stops on signal.
G Stops to leave passengers from Tallahassee or beyond, and take for Jacksonville or beyond.
□ Tickets may be exchanged at Railroad Ticket Office for tickets to be honored on Greyhound Buses between Railroad Stations.

THE GEORGIAN—HUMMING BIRD

CHICAGO—NASHVILLE—ATLANTA

(WITH CONNECTING SERVICE FROM AND TO ST. LOUIS)

READ DOWN				READ UP				
Coaches only 1 Daily	The Georgian 5 Daily	The Georgian 3 Daily	Miles	Table G		The Georgian 4 Daily	The Georgian No. 10 Daily	Coaches only 2 Daily
				December 15, 1967				
	PM	*PM		Lv Chicago	CST	C.&E.I. R.R.	Ar	AM
	6.10	3.45	0	Lv Danville	CST	"	Lv	10.35
	7.15	6.10	123	Lv Terre Haute	CST	"	Lv	7.55
	8.18	7.15	178	Lv Vincennes	CST	"	Lv	6.40
	9.55	8.18	235	Ar Evansville	CST	"	Lv	5.40
		9.55	287					4.30
	4.00		0	Lv St. Louis, Mo.	CST	L.&N. R.R.	Ar	8.55
	4.18		3	Lv East St. Louis, Ill.	CST	"	Ar	8.17
	4.44		17	Lv Belleville	CST	"	Lv	7.48
	5.27		52	Lv Nashville, Ill.	CST	"	Lv	7.05
	5.40		63	Lv Ashley	CST	"	Lv	6.52
	6.05		79	Lv Mt. Vernon, Ill.	CST	"	Lv	6.27
	6.26		94	Lv Dahlgren	CST	"	Lv	
	6.40		104	Lv McLeansboro	CST	"	Lv	5.50
	6.59		117	Lv Enfield	CST	"	Lv	5.27
	7.14		127	Lv Carmi, Little Wabash River	CST	"	Lv	5.16
	7.40		134	Lv Maunie, Ill.▲, Wabash River	CST	"	Lv	
	8.30		146	Lv Mt. Vernon, Ind.	CST	"	Lv	4.46
			165	Ar Evansville, Ind.	CST	"	Lv	4.15
				Ohio River				
			165	Lv Evansville, Ind.	CST	"	Ar	3.40
			178	Lv Henderson, Ky.	CST	"	Ar	3.02
			217	Lv Madisonville	CST	"	Lv	2.13
			252	Lv Hopkinsville	CST	"	Lv	1.16
			276	Lv Guthrie, Ky.	CST	"	Lv	
			294	Lv Springfield	CST	"	Lv	
			324	Ar Nashville, Tenn.	CST	"	Lv	11.45
				Cumberland River				
			324	Lv Nashville, Tenn.	CST	"	Ar	11.20
			344	Lv Smyrna, Stone's River	CST	"	Lv	
			355	Lv Murfreesboro	CST	"	Lv	9.44
			393	Lv Tullahoma	CST	"	Lv	4.19
			406	Lv Decherd	CST	"	Lv	3.52
			411	Lv Cowan	CST	"	Lv	3.42
			437	Lv Stevenson, Ala.	CST	"	Lv	2.57
			446	Lv Bridgeport, Ala.	CST	"	Lv	2.45
			475	Ar Chattanooga, Tenn.	EST	"	Lv	8.45
				Tennessee River				
			475	Lv Chattanooga, Tenn.	EST	"	Ar	8.30
			498	Lv Ringgold, Ga.	EST	"	Lv	2.20
			513	Lv Dalton	EST	"	Lv	1.21
			528	Lv Resaca▲, Oostanaula River	EST	"	Lv	12.45
			534	Lv Calhoun	EST	"	Lv	12.06
			543	Lv Adairsville	EST	"	Lv	11.59
			553	Lv Kingston▲	EST	"	Lv	11.39
			564	Lv Cartersville, Etowah River	EST	"	Lv	11.24
			568	Lv Emerson▲	EST	"	Lv	11.09
			575	Lv Acworth	EST	"	Lv	10.59
			581	Lv Kennesaw▲	EST	"	Lv	10.51
			589	Lv Marietta	EST	"	Lv	10.41
			594	Lv Smyrna▲	EST	"	Lv	10.30
			609	Ar Atlanta, Ga.	EST	"	Lv	10.14
								9.45

EQUIPMENT—THE GEORGIAN			
Sleepers	(936-540) Chicago-Atlanta	4 Sec., 4 Rmte., 5 DBR., 1 Compt.	
	(593-546) Louisville-Atlanta	6 Sec., 6 Rmte., 4 DBR.	
Club-Lounge	Chicago-Atlanta		
Dining Car	Chicago-Atlanta		
Coaches	Chicago-Atlanta	Reclining Seats	
	St. Louis-Atlanta	Reclining Seats	

REFERENCE NOTES (Tables G and GG)

C.S.T. Central Standard Time.
E.S.T. Eastern Standard Time.
f Stops on signal.
B Stops to leave or take pay passengers.
H Stops to take or leave pay passengers from or to Nashville and beyond.
N Stops to leave pay passengers from points south of Evansville and to take pay passengers for East St. Louis and beyond.
R Stops to take or leave pay passengers to or from points beyond Evansville, also to take or leave Pullman passengers to or from Louisville and beyond.
T Stops to leave pay passengers from or to Evansville, St. Louis or beyond; No. 5 also at Maunie on Sundays to take or leave passengers.
Y Stops to leave or take revenue passengers from or to Evansville or Nashville and beyond.
▲ No facilities for handling baggage at this station; baggage should be checked to or from nearest station where facilities are available.
□ Checked baggage handled on train 5, St. Louis to Nashville; on trains 3 and 4 between Chicago and Atlanta, and at Evansville, Nashville and Chattanooga. No pets handled in checked baggage service (sealed car).
△ Sleeper open 9:30 PM; may be occupied on arrival until 7:30 AM.

THROUGH SLEEPING CAR SERVICE

LOUISVILLE—CHATTANOOGA—ATLANTA

6 Section, 6 Roomette, 4 Double Bedroom Sleeper

7-3 Daily		Miles	Table GG		4-6 Daily	
PM	AM		PM	AM	PM	AM
Δ 11.10	0	Lv Louisville, Ky.	EST	Ar	4.35	Δ
2.25	187	Ar Nashville, Tenn.	CST	Lv	11.35	
2.55	187	Lv Nashville, Tenn.	CST	Ar	11.20	
7.25	338	Ar Chattanooga, Tenn.	EST	Lv	8.45	
10.55	472	Ar Atlanta, Ga.	EST	Lv	5.15	
AM					PM	

RAIL TRAVEL CARDS

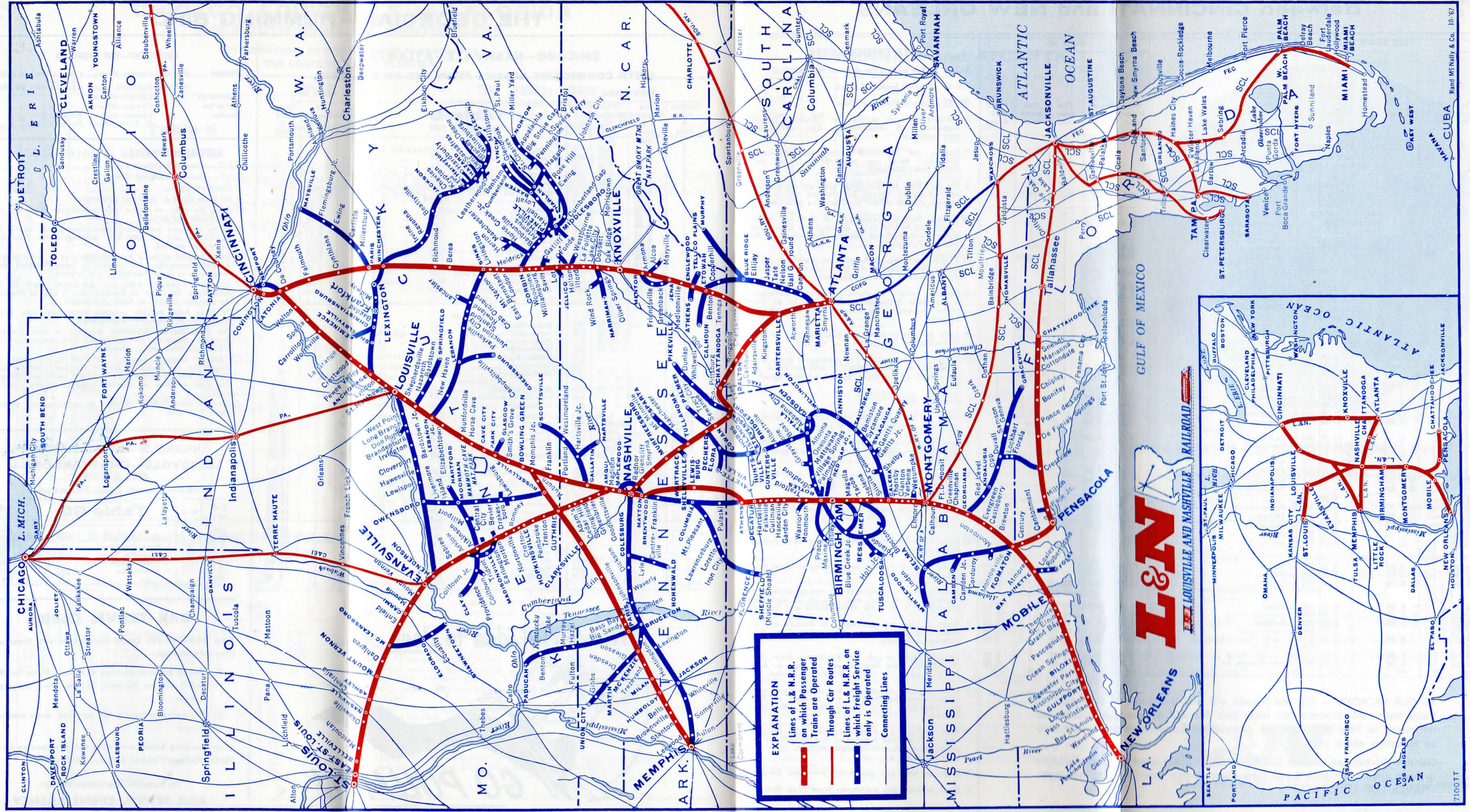
Your RAIL-TRAVEL Credit Card gives you these distinct advantages—

- Charge account service at ticket offices for Rail and Pullman tickets; meals, and baggage charges.
- Eliminates necessity for carrying large amounts of cash.

Many leading hotels and auto rental agencies (Avis, Hertz, National) honor Rail Travel Cards.

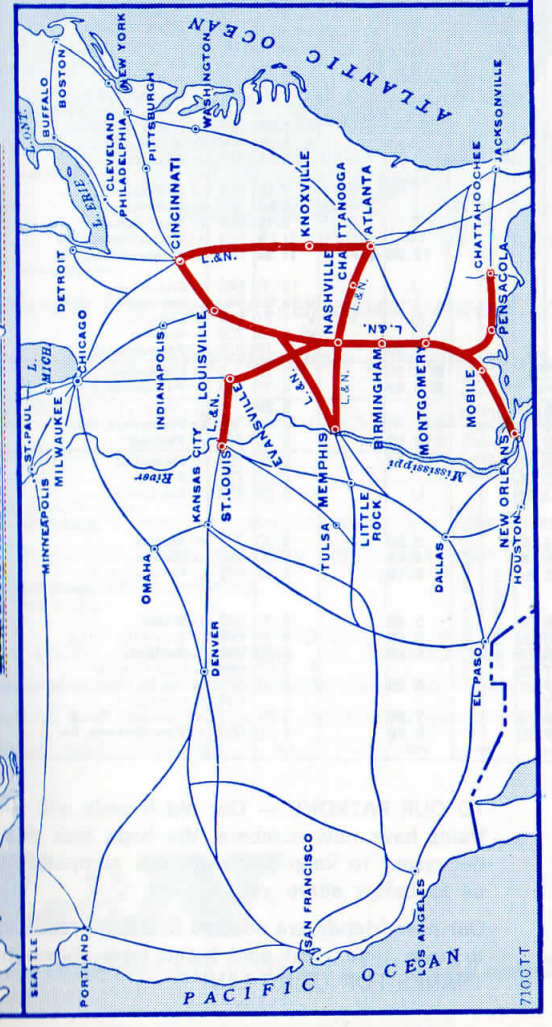
For complete information, address:
RAIL TRAVEL CREDIT AGENCY
Room 436 Union Station • Chicago, Illinois 60606





L & N

LOUISVILLE AND NASHVILLE RAILROAD



Between CINCINNATI and NEW ORLEANS

READ DOWN					READ UP					
The Gulf Wind	The South Wind	The Crescent	The Humming Bird	The Pan-American	Miles	The Pan-American	The Humming Bird	The Crescent	The South Wind	The Gulf Wind
12-9 Daily	15 See Note 1	7 Daily	7 Daily	9 Daily		8 Daily	6 Daily	8 Daily	16 See Note 1	8-11 Daily
Table J December 15, 1967										
			PM 7.40	AM 9.45	0	Lv Cincinnati, Ohio	EST. Ar	PM 9.45	AM 8.10	
			f 10.45	f 12.55	114	Lv Latonia, Ky.	EST. Lv	f 6.30	f 5.00	
			J 11.10	J 1.20	114	Ar Louisville	EST. Lv	6.05	4.35	
						Lv Louisville	EST. Ar			
						Lv Cincinnati, Ohio	EST. Ar			
						Lv Elizabethtown, Ohio	CST. Lv	f 3.57	f 2.30	
						Lv Cave City, Tenn.	CST. Lv	C 3.17	C 1.20	
						Ar Bowling Green	CST. Lv	2.48	1.20	
						Lv Bowling Green	CST. Ar		12.50	
						Ar Memphis	CST. Lv		5.00	
						Lv Bowling Green	CST. Ar	2.48	1.00	
						Ar Nashville	CST. Lv	1.10	11.35	
						Lv Nashville, Tenn.	CST. Ar	12.45	10.50	
						Lv Lewisburg, Tenn.	CST. Lv	11.31		
						Ar Athens, Ala.	CST. Lv	S 10.36		
						Lv Decatur	CST. Lv	10.16	8.15	
						Lv Cullman	CST. Lv	f .	B .	
						Ar Birmingham	CST. Lv	8.30	6.25	
						Lv Birmingham	CST. Ar	8.10	6.10	
						Ar Montgomery, Ala.	CST. Ar	6.00	4.10	
						Lv Montgomery, Ala.	CST. Ar	5.20	3.40	
						Lv Greenville	CST. Lv	U 4.05	H 2.29	U 4.05
						Lv Georgiana	CST. Lv	V .	V .	V .
						Lv Evergreen	CST. Lv	V .	V .	V .
						Lv Brewton	CST. Lv	V .	V .	V .
						Ar Flomaton	CST. Lv	2.35	1.00	2.35
						Lv Flomaton	CST. Ar	2.00	12.50	2.00
						Ar Pensacola, Fla.	CST. Ar	12.45	11.40	12.45
						Lv Jacksonville, Fla. (S.C.L.)	EST. Ar	1.35	1.35	1.35
						Ar Pensacola, Fla.	CST. Ar	4.35	4.35	4.35
						Lv Flomaton	CST. Lv	3.25	3.25	3.25
						Lv Flomaton	CST. Ar	2.10	12.55	2.10
						Lv Atmore	CST. Lv	V .	V .	V .
						Lv Bay Minette	CST. Lv	V .	V .	V .
						Lv Mobile	CST. Lv	12.40	11.40	12.40
						Lv Mobile	CST. Ar	12.15	11.25	12.15
						Lv Pascagoula, Miss.	CST. Lv	11.18	10.31	11.18
						Lv Biloxi	CST. Lv	10.46	10.07	10.46
						Lv Edgewater Park	CST. Lv	W 10.30	W 10.30	W 10.30
						Lv Gulfport	CST. Lv	10.22	9.51	10.22
						Lv Pass Christian	CST. Lv	K 10.05	K 10.05	K 10.05
						Lv Bay St. Louis (St. Louis Bay)	CST. Lv	9.56	9.29	9.56
						Lv Waveland	CST. Lv	Z .	Z .	Z .
						Ar Carrollton Ave.	CST. Lv	8.35	8.20	8.35
						Ar New Orleans, La.	CST. Lv	8.30	8.15	8.30

REFERENCE NOTES

- NOTE 1: See page 4 for dates of operation.
- C.S.T. Central Standard Time.
- E.S.T. Eastern Standard Time.
- ⊖ Elizabethtown is station for Abraham Lincoln National Park, Hodgenville, Ky.; taxicab service available.
- ⊕ Station for Mammoth Caves; taxicab service available: \$4.00 one way, \$7.00 round trip. Group rates available.
- ▲ No facilities for handling baggage at this station; baggage should be checked to or from nearest station where facilities are available.
- Tickets may be exchanged at Railroad Ticket Office for tickets to be honored on Greyhound Buses from Railroad Station, Flomaton, to Bus Station, Pensacola.
- Tickets may be exchanged at Railroad Ticket Office for tickets to be honored on Greyhound Buses between Railroad Stations.
- A Stops to receive or discharge revenue passengers to or from Indianapolis, Ind., or to or from points beyond Montgomery, Ala. No checked baggage.
- B Stops to take or leave pay passengers to or from Nashville or Montgomery or beyond.
- C Stops to leave or take pay passengers from or to Louisville or beyond, and to take or leave pay passengers to or from points beyond Bowling Green.
- f Stops on signal.
- H Stops to leave or take pay passengers from or to Mobile, Birmingham or beyond.
- J Louisville-Atlanta sleeper open 9:30 PM; Atlanta-Louisville sleeper may be occupied until 7:30 AM EST.
- K Stops to leave pay passengers from New Orleans and beyond and take pay passengers for New Orleans and beyond.
- L Stops to leave pay passengers from Mobile and beyond and to take pay passengers for New Orleans.
- Q Stops to leave pay passengers from Montgomery, Pensacola or beyond.
- R Stops to leave or take pay passengers from or to Atlanta or beyond.
- S Stops to leave or take pay passengers from or to Nashville or beyond, and to take or leave pay passengers to or from Birmingham and beyond.
- T Stops to take pay passengers to Mobile and beyond, and to leave pay passengers from New Orleans or beyond.
- U Stops to leave or take pay passengers from or to Montgomery and beyond, and to take or leave pay passengers to or from Mobile or beyond.
- V Stops to leave or take pay passengers from or to Montgomery and beyond, and to take or leave pay passengers to or from Pensacola, Mobile or beyond.
- W Stops to leave pay passengers from New Orleans; also, to take pay passengers for Mobile or beyond when advance arrangements are made for train to stop.
- Y Stops to take pay passengers for New Orleans.
- Z Stops to leave pay passengers from New Orleans.

CINCINNATI and ATLANTA

READ DOWN		READ UP	
17 Daily	Miles	Table L	18 Daily
		(Coaches only) December 15, 1967	
		Eastern Standard Time	
PM 6.40	0	Lv Cincinnati, Ohio	ET...Ar 8.15
f 6.58	3	Lv Latonia, Ky.	Ar 7.50
f 7.45	41	Lv Falmouth	Lv 6.56
f 8.20	67	Lv Cynthia	Lv 6.25
8.40	82	Lv Paris	Lv 6.07
9.08	98	Lv Winchester	Lv 5.45
		Kentucky River	
f 9.45	120	Lv Richmond	Lv 5.05
f 10.15	132	Lv Berea	Lv 4.42
C 11.16	174	Lv London	C 3.45
11.45	188	Ar Corbin	Lv 3.25
12.01	188	Lv Corbin	Ar 3.00
		Cumberland River	
f 12.23	206	Lv Williamsburg, Ky.	Lv 2.07
1.21	240	Lv LaFollette, Tenn.	Lv 12.55
3.15	293	Ar Knoxville	Lv 11.45
		Gateway to Smoky Mtn. Natl. Park Tennessee River	
3.45	293	Lv Knoxville	Ar 11.15
4.50	350	Ar Etowah	Lv 9.37
5.01	350	Lv Etowah	Ar 9.27
5.48	394	Lv Chatsworth	Lv 8.41
E 6.56	439	Ar Cartersville	Lv 7.51
		Etowah River	
H 7.27	464	Ar Marietta	Lv 7.19
		Chattahoochee River	
8.10	484	Ar Atlanta, Ga.	ET...Lv 6.45
AM			PM

REFERENCE NOTES (Table L)

- C Stops to leave or take pay passengers from or to Latonia, or Atlanta, or beyond.
- E Stops to leave or take pay passengers from or to Cincinnati or beyond.
- f Stops on signal.
- G Stops to leave pay passengers from Atlanta and beyond and to take for Cincinnati and beyond.
- H Stops to leave or take pay passengers from or to Knoxville or beyond.

NEW ORLEANS

No other city in the world combines so well the romantic air of the Old World with the gay and youthful spirit of the new. World travelers know there is nothing like this city of glamour and legend. The atmosphere breathes adventure and the beauty of a romantic setting carries you away—into a gay new life, that seems even more lively after dark.

MOBILE

Many nations, including the Spaniards who came in 1540, have played a part in the planning, architecture and spirit of the city. Today Mobile is a large shipbuilding center and its wharves, including the State Docks of Alabama, are busy with valuable traffic. Mobile is also famous for its Azalea Trail and nearby Bellingrath Gardens, famous Flower Capital. These interesting cities are served by many fine L&N Trains, including The Humming Bird, The Pan American, The Gulf Wind and The Crescent.



One Source for every transport need...
... that's L&N Distribution Leadership!

"Flexibility" is the key word in L&N's total program for its shippers.

L&N offers new cars, new terminal facilities, new specialized equipment, new direct access, real time, computer telecommunications and coordinated scheduling.

You achieve L&N's "3-S" advantages... Service, Speed and Savings, programmed by men who understand the logistics of total marketing. Call today, L&N's Freight Traffic Specialists are ready to meet every challenge.

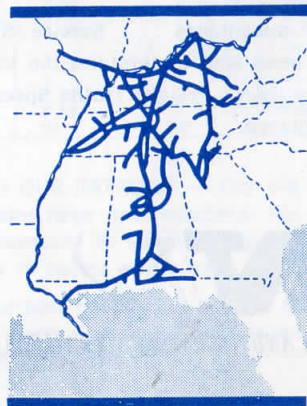
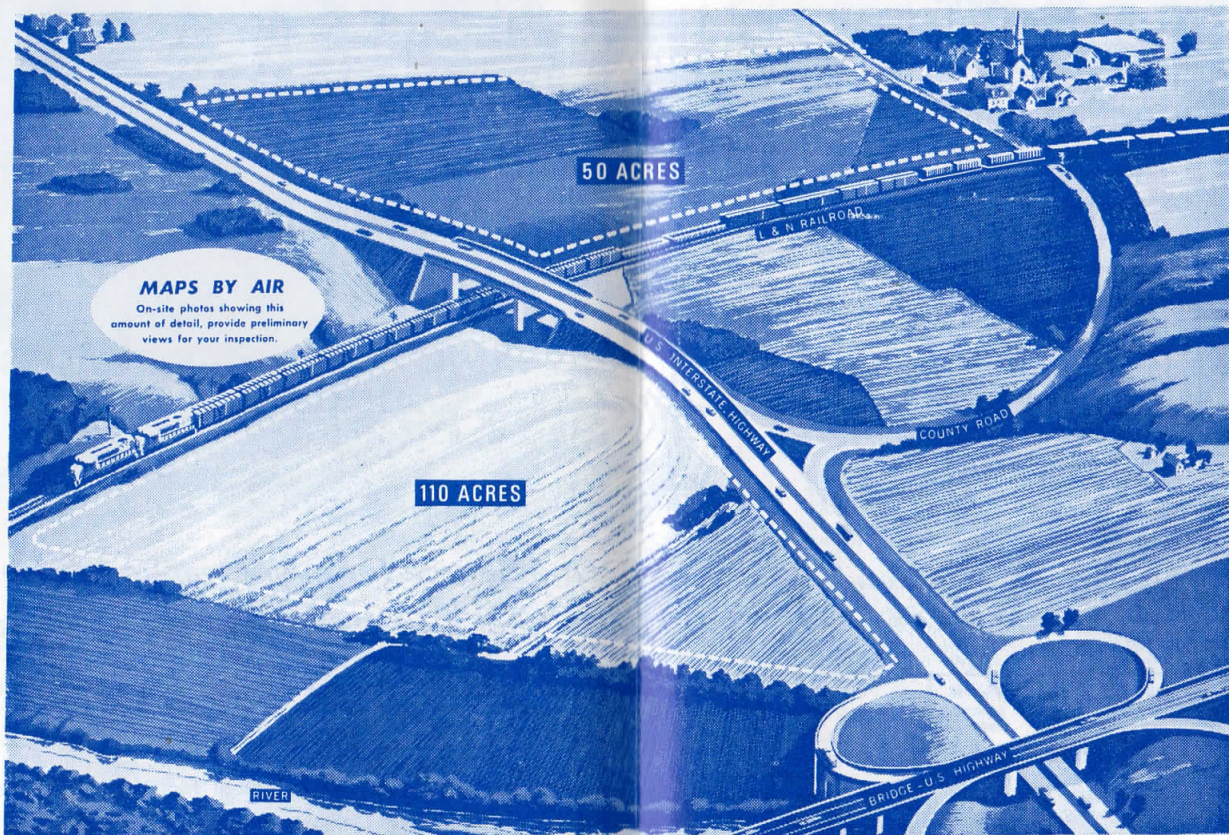


TO OUR PATRONS — Our old friends will find that some of their familiar trains have new numbers. We hope that this will not confuse you. It was necessary to keep step with our computerized operations and will enable us to better serve you.

Our new friends are advised that light faced type is used to show mid-night to noon times and bold faced type shows times from noon to mid-night. THANKS FOR USING L&N!

GET ALL THE FACTS from **L&N**

LEARN ABOUT AMERICA'S FINEST INDUSTRIAL SITES IN L&N'S 13-STATE "GROWTH CLIMATE, U.S.A."!



Write! Receive detailed information, in confidence...

The decision to relocate or expand plant production facilities is one of the most important in your executive career. So many facts have to be considered that hundreds of man-hours could be spent compiling and weighing pertinent information. □ L&N's Industrial Development Specialists have laid the ground-work for you. They have classified all the essentials needed for executive decision on a thriving 13-state region of our nation called, "Growth Climate, U.S.A." □ If you are interested in a commercial or industrial site, L&N experts will supply you with aerial photographs of available locations, as well as applicable figures on manpower, water, electricity, markets and transportation in the region you pinpoint. Write today on your corporate letterhead. Your inquiry will be in confidence.



N. C. Kieffer, Director, Industrial Development
L&N Railroad Company
P. O. Box 1198, Louisville, Kentucky 40201
Please contact me about plant site information.

Name _____
Company _____
Address _____
City _____ State _____ Zip _____

Louisville and Nashville Railroad

RAILROAD AND SLEEPING CAR RATES IN EFFECT DECEMBER 15, 1967

Fares published herein, both Rail and Pullman, are Fares in effect December 15th, 1967. They are published as information only and are subject to change without notice, except as required by law.

BETWEEN	RAILROAD FARES				PULLMAN RATES Lower Berth
	In Coaches		In Pullmans		
	One Way	6 Mos. R.T.	One Way	6 Mos. R.T.	
Atlanta, Ga. and Chattanooga, Tenn.	\$ 4.15	\$ 7.50	\$ 5.80	\$10.45	\$ 6.10
Chicago, Ill.	24.56	44.25	34.10	61.40	10.00
Cincinnati, Ohio	14.70	26.50	20.41	36.75	6.60
Cleveland, Ohio	26.77	50.37	39.52	74.92	10.00
Detroit, Mich.	25.56	48.01	38.37	67.83	6.10
Evansville, Ind.	14.09	25.40	19.39	34.95	6.10
Knoxville, Tenn.	5.96	10.75	8.35	15.05	6.10
Louisville, Ky.	14.46	26.05	20.24	36.45	6.10
Memphis, Tenn.	12.89	23.25	17.41	31.35	6.10
Nashville, Tenn.	8.79	15.85	12.32	22.20	6.10
New Orleans, La.	15.10	27.20	21.15	38.10	7.05
St. Louis, Mo.	19.49	35.10	26.44	47.60	6.10
Birmingham, Ala. and Biloxi, Miss.	10.27	18.50	14.38	25.90	6.10
Chicago, Ill.	22.56	40.65	31.29	56.35	9.15
Cincinnati, Ohio	14.94	26.90	20.77	37.40	6.60
Cleveland, Ohio	27.01	50.77	39.88	75.57	10.70
Detroit, Mich.	25.80	48.41	38.73	68.48	6.10
Evansville, Ind.	11.57	20.85	15.84	28.55	6.10
Jacksonville, Fla.	13.34	24.05	18.67	33.65	7.05
Louisville, Ky.	11.94	21.50	16.69	30.05	6.10
Miami, Fla.	24.46	44.05	34.23	61.65	10.70
Mobile, Ala.	8.45	15.25	11.83	21.30	6.10
Montgomery, Ala.	2.99	5.40	4.19	7.55	6.10
Nashville, Tenn.	6.27	11.30	8.77	15.80	6.10
New Orleans, La.	10.85	19.55	15.21	27.40	6.10
Pensacola, Fla.	8.00	14.40	11.20	20.20	6.10
St. Louis, Mo.	16.97	30.55	22.38	40.30	6.10
Cincinnati, Ohio and Biloxi, Miss.	25.21	45.40	35.15	63.30	10.70
Jacksonville, Fla.	25.34	45.65	35.34	63.65	10.70
Knoxville, Tenn.	9.23	16.65	12.77	23.00	6.10
Louisville, Ky.	3.78	6.85	5.12	9.25	6.10
Memphis, Tenn.	15.32	27.60	21.25	38.25	6.10
Miami, Fla.	36.46	65.65	50.90	91.65	14.75
Mobile, Ala.	23.39	42.15	32.60	58.70	10.00
Montgomery, Ala.	17.93	32.30	24.96	44.95	8.30
Nashville, Tenn.	9.44	17.00	13.06	23.55	6.10
New Orleans, La.	25.75	46.35	35.92	64.70	10.70
Pensacola, Fla.	22.94	41.30	31.97	57.55	10.00
St. Petersburg, Fla.	33.00	59.40	46.04	82.90	13.90
Evansville, Ind. and Jacksonville, Fla.	24.73	44.55	34.32	61.80	10.70
Miami, Fla.	35.85	64.55	49.88	89.80	14.75
Mobile, Ala.	19.96	35.95	27.58	49.65	9.15
Montgomery, Ala.	14.50	26.10	19.94	35.90	7.05
Nashville, Tenn.	5.30	9.55	7.07	12.75	6.10
New Orleans, La.	23.56	42.45	29.93	53.90	9.15
St. Louis, Mo.	5.41	9.75	7.39	13.35	6.10
Louisville, Ky. and Biloxi, Miss.	22.15	39.90	30.98	55.80	9.65
Jacksonville, Fla.	25.10	45.20	35.17	63.35	10.70
Memphis, Tenn.	11.60	20.90	16.19	29.15	6.10
Miami, Fla.	36.22	65.20	50.73	91.35	14.75
Mobile, Ala.	20.33	36.60	28.43	51.20	9.65
Montgomery, Ala.	14.87	26.80	20.79	37.45	7.05
Nashville, Tenn.	5.67	10.25	7.92	14.30	6.10
New Orleans, La.	24.67	44.45	32.97	59.35	10.00
Pensacola, Fla.	19.88	35.80	27.80	50.05	9.15
St. Petersburg, Fla.	32.76	59.00	45.87	82.60	13.20
Mobile, Ala. and Chicago, Ill.	30.95	55.75	41.92	75.50	11.55
Jacksonville, Fla.	14.35	25.85	20.12	36.25	7.05
Miami, Fla.	24.92	44.90	34.90	62.85	10.70
Montgomery, Ala.	5.46	9.85	7.64	13.80	6.10
New Orleans, La.	4.40	7.95	6.16	11.10	6.10
New York, N. Y.	40.80	75.60	59.08	109.74	17.55
St. Petersburg, Fla.	20.88	37.60	29.25	52.65	9.65
Washington, D. C.	30.15	54.30	42.26	76.10	12.85
Montgomery, Ala. and Chicago, Ill.	25.49	45.90	35.39	63.75	10.00
Cleveland, Ohio	30.00	56.17	44.07	83.12	12.00
Detroit, Mich.	28.79	53.81	42.92	76.03	6.10
Nashville, Tenn.	9.20	16.60	12.87	23.20	6.10
New Orleans, La.	9.80	17.65	13.72	24.70	6.10
St. Louis, Mo.	19.90	35.85	25.50	45.90	6.10
Nashville, Tenn. and Chicago, Ill.	16.29	29.35	22.52	40.55	6.10
Cleveland, Ohio	21.51	40.23	32.15	62.02	8.30
Detroit, Mich.	20.30	38.51	31.00	54.63	6.10
Jacksonville, Fla.	19.43	35.00	27.25	49.05	9.15
Miami, Fla.	30.55	55.00	42.81	77.10	13.20
New Orleans, La.	19.00	34.20	26.59	47.90	7.95
Pensacola, Fla.	14.21	25.60	19.88	35.80	7.05
St. Louis, Mo.	10.70	19.30	14.46	26.05	6.10
St. Petersburg, Fla.	27.09	48.80	37.95	68.35	12.00

BETWEEN	RAILROAD FARES				PULLMAN RATES Lower Berth
	In Coaches		In Pullmans		
	One Way	6 Mos. R.T.	One Way	6 Mos. R.T.	
New Orleans, La. and Chicago, Ill.	\$ 33.37	\$ 60.10	\$ 41.92	\$ 75.50	\$12.00
Cleveland, Ohio	37.82	70.22	55.03	102.87	13.90
Detroit, Mich.	36.61	67.86	53.88	95.78	6.10
Jacksonville, Fla.	18.74	33.75	26.29	47.35	7.95
Miami, Fla.	29.31	52.80	41.07	73.95	12.85
New York, N. Y.	45.14	83.40	65.16	120.69	18.80
Pensacola, Fla.	7.58	13.65	10.64	19.20	6.10
Philadelphia, Pa.	40.88	74.88	58.41	107.19	17.55
Pittsburgh, Pa.	40.33	74.29	59.01	110.41	13.90
St. Louis, Mo.	24.74	44.55	31.43	56.60	6.10
St. Petersburg, Fla.	25.27	45.50	35.42	63.80	10.70
Tampa, Fla.	24.05	43.30	33.72	60.70	10.70
Washington, D. C.	34.49	62.10	48.34	87.05	13.90
St. Louis, Mo. and Augusta, Ga.	24.71	44.50	33.73	60.75	6.10
Jacksonville, Fla.	30.13	54.25	41.65	73.90	9.15
Miami, Fla.	41.25	74.25	56.61	101.90	14.75
Pensacola, Fla.	24.91	44.85	31.85	57.35	6.10
St. Petersburg, Fla.	37.79	68.05	51.75	93.15	13.90
Savannah, Ga.	27.98	50.40	38.34	69.05	6.10

* These fares apply via Evansville.

Rates for other Sleeping Car Accommodations

Based on charge for Lower Berth as shown
Applies only between points where through Pullman rates are published—
not to combination rates.

Where lower berth rate is	Upper berth rate is	Roomette	Bedroom	Compartment	Drawing Room	Bedroom Suite
\$ 6.10	\$ 4.60	\$ 8.50	\$15.40	\$16.55	\$22.30	\$27.85
6.60	5.00	9.20	16.65	17.90	24.20	30.30
7.05	5.40	9.85	17.40	18.85	25.50	31.80
7.95	5.95	11.10	19.50	21.00	28.50	35.60
8.30	6.40	11.60	20.40	21.95	29.90	37.25
9.15	7.00	12.80	22.15	23.95	32.65	40.65
9.65	7.30	13.45	23.20	25.20	34.35	42.60
10.00	7.50	13.90	24.00	26.00	35.50	44.05
10.70	8.20	15.10	25.65	27.75	37.95	47.05
11.55	8.80	16.30	27.50	29.75	40.75	50.50
12.00	9.10	16.80	28.45	30.90	42.25	52.25
12.35	9.45	17.45	29.25	31.65	43.40	53.70
12.85	9.70	17.95	30.25	32.90	45.10	55.65
13.20	10.00	18.55	31.05	33.65	46.20	57.10
13.90	10.60	19.60	32.65	35.45	48.65	60.15
14.75	11.25	20.70	34.55	37.45	51.50	63.70
15.25	11.50	21.20	35.50	38.55	53.05	65.40
16.30	12.40	22.80	37.95	41.10	56.60	70.05
17.55	14.00	23.85	40.25	43.25	57.90	72.85
18.80	14.80	25.40	42.90	46.25	62.10	77.60

‡ Via Washington, D.C., and PRR only.

MINIMUM NUMBER ADULT RAIL TICKETS REQUIRED BETWEEN POINTS ON L&N R.R.

	Master Room	Bedroom Suite	Drawing Room
Berth Service	2	2	1 1/4
Seat Service	2	2	2
	Compartment	Bedroom	Roomette
Berth Service	1 1/10	1	1
Seat Service	1 1/2	1	1

Where applicable, passengers may purchase Roomette Suite (2 Roomettes) at same rate as a Bedroom.