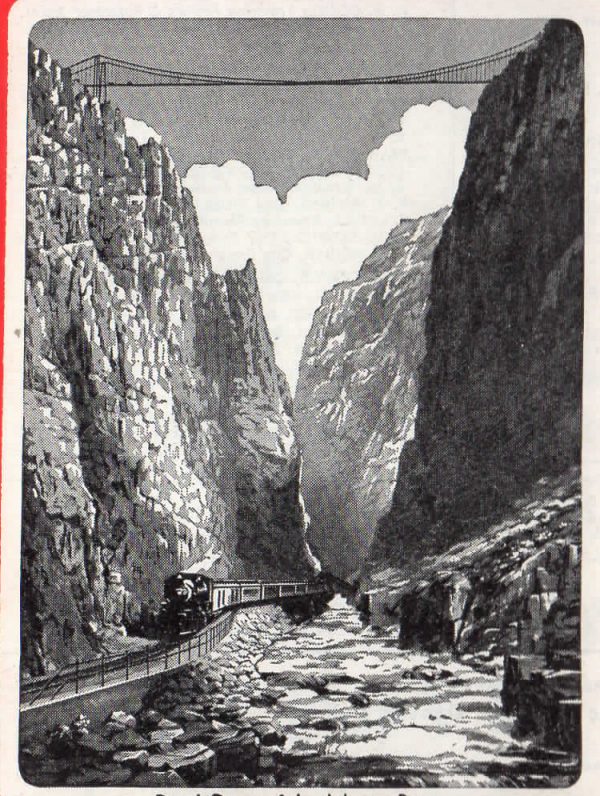


Rio Grande

TIME TABLES

ROYAL GORGE ROUTE



Royal Gorge of the Arkansas River

DENVER & RIO GRANDE WESTERN RAILROAD

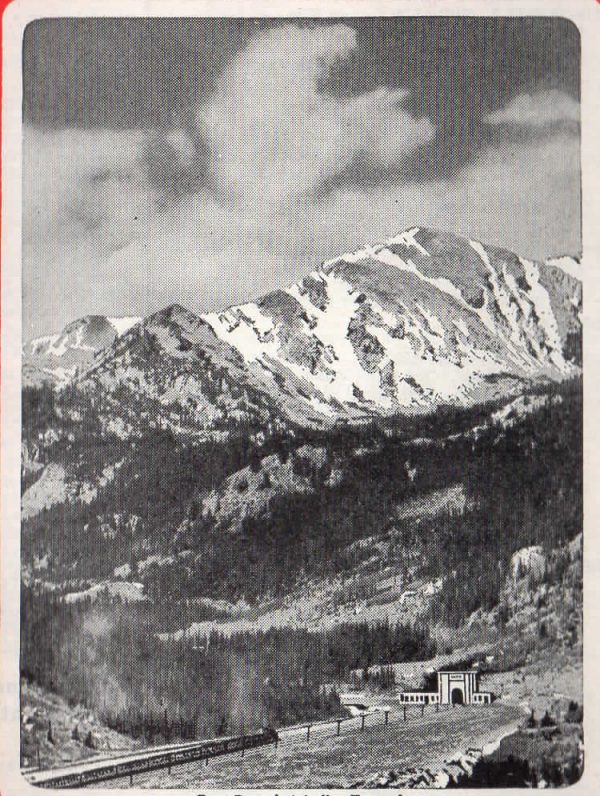
THRU THE ROCKIES—NOT AROUND THEM

ISSUED JUNE 2, 1946

Rio Grande

TIME TABLES

MOFFAT TUNNEL ROUTE



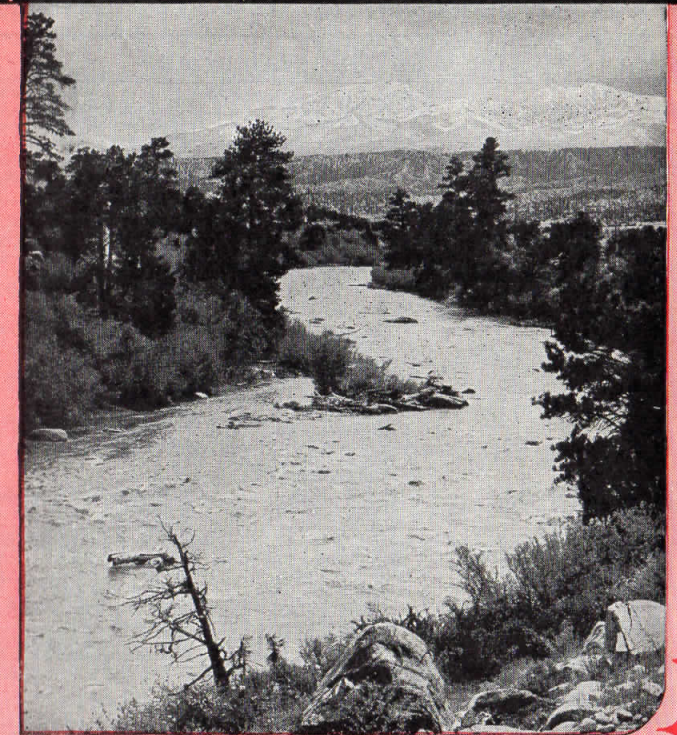
East Portal, Moffat Tunnel

DENVER & RIO GRANDE WESTERN RAILROAD

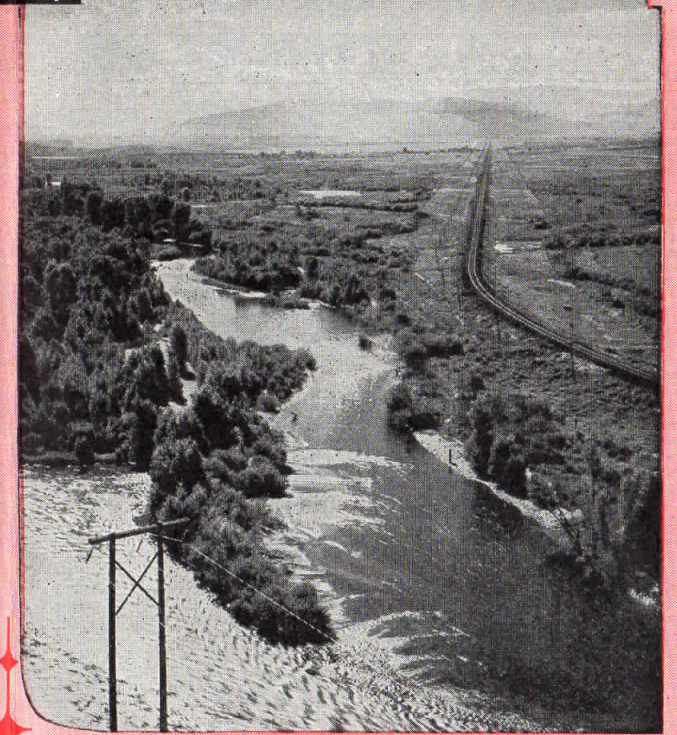
THRU THE ROCKIES—NOT AROUND THEM

ISSUED JUNE 2, 1946

Rio Grande

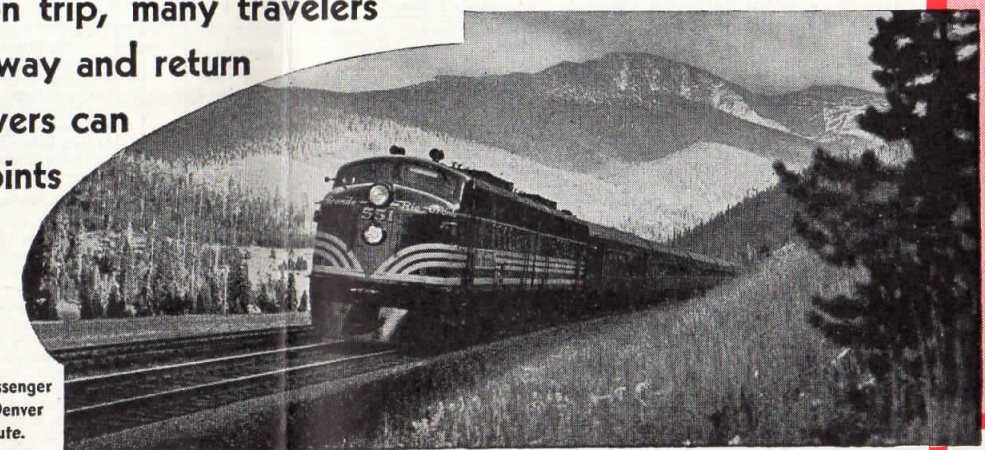


Shavano Peak, elevation 14,179 feet, dominates the upper Arkansas River Valley. Royal Gorge Route.



From this point near Granby, Colorado, rails of the Rio Grande parallel the Colorado River for 235 miles. Moffat Tunnel Route.

Rio Grande offers two great scenic routes, via the world-famed Royal Gorge or the Moffat Tunnel Scenic Shortcut, each with a multitude of glorious mountain vistas. To obtain greatest enjoyment from their vacation trip, many travelers prefer to go one way and return the other. Stopovers can be arranged at points of particular interest.



The Prospector, Diesel-electric powered passenger train, over night, every night between Denver and Salt Lake City. Moffat Tunnel Route.



Rio Grande

COLORADO AND NEW MEXICO LINES

DENVER, COLORADO SPRINGS, PUEBLO, GUNNISON, MONTROSE AND GRAND JUNCTION VIA MARSHALL PASS

Table with 6 columns: READ DOWN, Miles, Table No. 3 STATIONS, Elevation, 16-Bus, 2-Bus, READ UP. Lists routes from Denver to Grand Junction.

DENVER, COLORADO SPRINGS, PUEBLO AND SOMERSET VIA GRAND JUNCTION

Table with 6 columns: READ DOWN, Miles, Table No. 4 STATIONS, Elevation, Bus-2, Bus, READ UP. Lists routes from Denver to Somerset via Grand Junction.

DENVER, COLORADO SPRINGS, PUEBLO, WALSENBURG, ALAMOSA, DURANGO, CREEDE, FARMINGTON AND SILVERTON VIA LA VETA PASS

Table with 6 columns: READ DOWN, Miles, Table No. 5 STATIONS, Elevation, 116-16, Bus, READ UP. Lists routes from Denver to Silverton via La Veta Pass.

(Rio Grande Trailways)

Table with 6 columns: READ DOWN, Miles, Table No. 6 STATIONS, Elevation, Bus, READ UP. Lists routes from Denver to Alamosa and Durango.

(Rio Grande Trailways - - - Daily except Sunday Bus Service)

Table with 6 columns: READ DOWN, Miles, Table No. 7 STATIONS, Elevation, Bus, READ UP. Lists routes from Denver to Alamosa and Durango.

(Rio Grande Trailways - - - Daily Bus Service)

Table with 6 columns: READ DOWN, Miles, Table No. 8 STATIONS, Elevation, Bus, READ UP. Lists routes from Denver to Alamosa and Durango.

Make 1946 Victory Vacation Year
Plan now to spend your first peace-time holiday among the spectacular scenic wonders of the Rocky Mountain West...



Rio Grande

UTAH LINES

PARK CITY BRANCH

Table with 6 columns: READ DOWN, Miles, Table No. 6 STATIONS, Elevation, Bus, READ UP. Lists routes from Park City to Salt Lake City.

PROVO CANON BRANCH

Table with 6 columns: READ DOWN, Miles, Table No. 7 STATIONS, Elevation, Bus, READ UP. Lists routes from Provo to Salt Lake City.

MARYSVALE BRANCH

Table with 6 columns: READ DOWN, Miles, Table No. 8 STATIONS, Elevation, Bus, READ UP. Lists routes from Marysville to Salt Lake City.

SAN PETE VALLEY BRANCH

Table with 6 columns: READ DOWN, Miles, Table No. 9 STATIONS, Elevation, Bus, READ UP. Lists routes from San Pete Valley to Salt Lake City.

* Daily
Stops daily except Sunday. Heavy figures P. M. Light figures A. M.

PULLMAN FARES SUBJECT TO CHANGE-FEDERAL TAX NOT INCLUDED

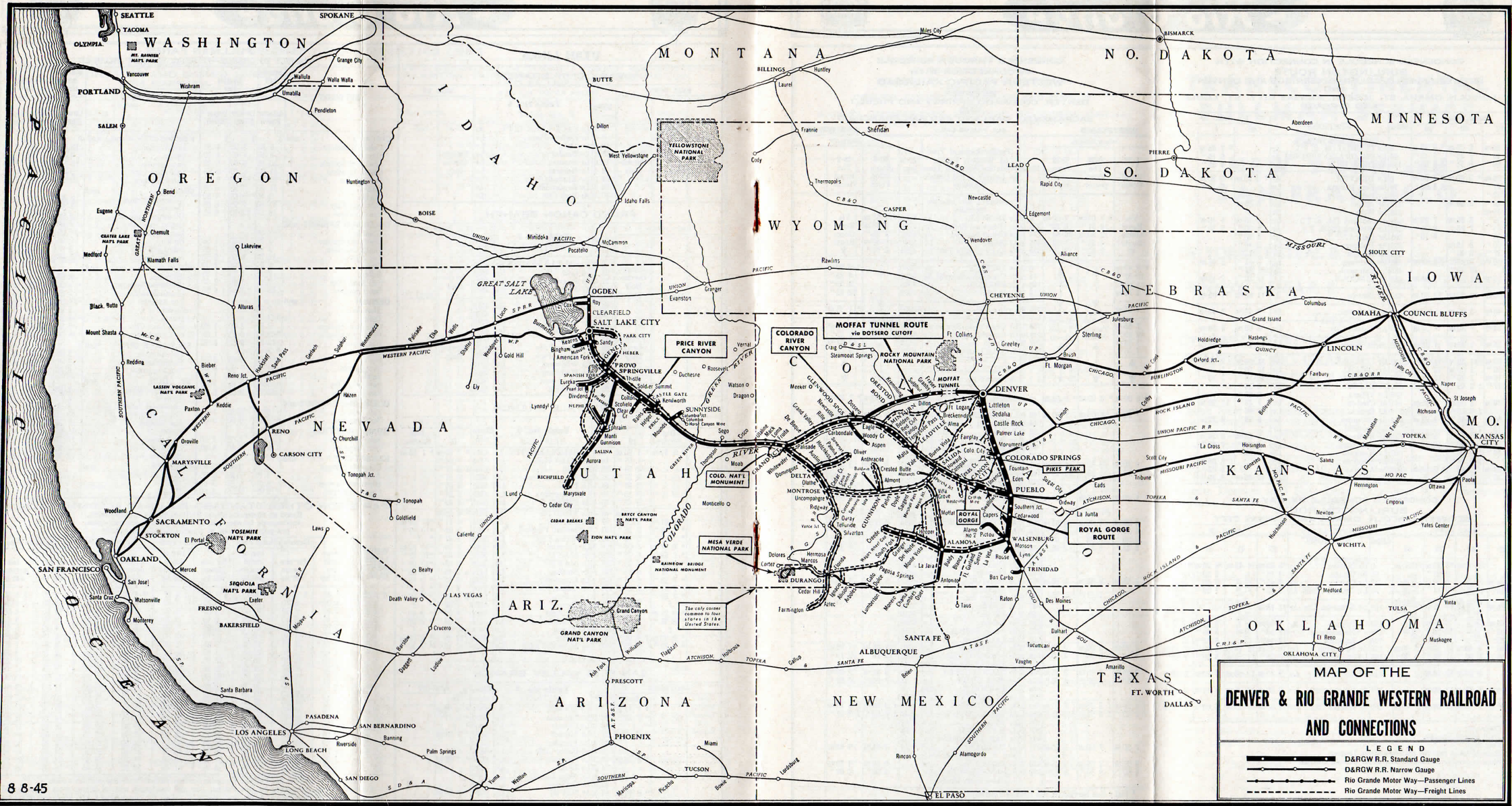
Table with columns: BETWEEN, Standard Car, Tourist Car, Lower Berth, Upper Berth. Lists fares for routes between Chicago, Omaha, St. Louis, etc.

FARES FOR OTHER STANDARD PULLMAN ACCOMMODATIONS

Based on charge for Lower Berth as shown in above table. Applies only between points where through Pullman fares are published...

Table with columns: WHERE LOWER BERTH FARE IS, Upper berth fare will be, Drawing Room Fare, etc.

The fares are quoted by the Pullman Company and are subject to change without notice. Exclusive Space Occupancy by One Person: One and one-fourth railroad tickets must be purchased...



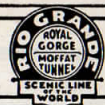
**MAP OF THE
DENVER & RIO GRANDE WESTERN RAILROAD
AND CONNECTIONS**

LEGEND

- D&RGW R.R. Standard Gauge
- D&RGW R.R. Narrow Gauge
- Rio Grande Motor Way—Passenger Lines
- Rio Grande Motor Way—Freight Lines



Rio Grande



CONDENSED SCHEDULE IN CONNECTION WITH BURLINGTON ROUTE BETWEEN PUEBLO, COLORADO SPRINGS AND DENVER AND LINCOLN, OMAHA, ST. JOSEPH, KANSAS CITY, ST. LOUIS AND CHICAGO

Table with columns: READ DOWN (12, 40, 10), Miles, STATIONS (D. & R. G. W. R. R., Lv PUEBLO, Lv COLORADO SPRINGS, Ar DENVER, etc.), READ UP (39, 1). Includes times for various routes and stations.

CONDENSED SCHEDULE BY WAY OF BURLINGTON ROUTE BETWEEN LINCOLN, OMAHA AND KANSAS CITY

Table with columns: READ DOWN (26, 42, 20, 44), Miles, STATIONS (Lv Lincoln, Ar Omaha, Lv Council Bluffs, etc.), READ UP (41, 21, 43). Includes times for routes between Lincoln, Omaha, and Kansas City.

* Daily. † Daily except Sunday. ‡ Flag stop. ⊙ Stops to leave revenue passengers from Denver. ⊙ Stops to receive revenue passengers for Lincoln and east.

CONDENSED THROUGH SCHEDULE IN CONNECTION WITH WESTERN PACIFIC RAILROAD BETWEEN DENVER, COLORADO SPRINGS AND PUEBLO AND SACRAMENTO, OAKLAND AND SAN FRANCISCO

Table with columns: WESTBOUND (1-39, 7-39, 5-39), Miles, STATIONS (Pacific Standard Time on Western Pacific; Mountain Standard Time on Denver & Rio Grande Western), Elevation, 40-6 Exposition Flyer, 40-2 The Royal Gorge, READ UP. Includes times for routes between Denver, Colorado Springs, Pueblo, Sacramento, Oakland, and San Francisco.

⋆ Daily Bus Service via Rio Grande Trailways. * Daily. ‡ Flag stop.



Rio Grande



CONDENSED THROUGH SCHEDULE IN CONNECTION WITH MISSOURI PACIFIC RAILROAD BETWEEN DENVER, COLORADO SPRINGS AND PUEBLO AND WICHITA, KANSAS CITY, ST. LOUIS, ST. JOSEPH, OMAHA, LITTLE ROCK AND HOT SPRINGS

Table with columns: EASTBOUND (1-16, 3-12), Miles, STATIONS (D. & R. G. W. R. R., Lv DENVER, Lv COLORADO SPRINGS, Ar PUEBLO, etc.), READ UP (15-2, 11-4). Includes times for routes between Denver, Colorado Springs, Pueblo, Wichita, Kansas City, St. Louis, St. Joseph, Omaha, Little Rock, and Hot Springs.

KANSAS CITY, LINCOLN, OMAHA. Table with columns: STATIONS (Lv KANSASCITY, Lv Leavenworth, Ar Atchison, etc.), Miles, Times.

KANSAS CITY, NEVADA, CARTHAGE, JOPLIN. Table with columns: STATIONS (Lv KANSASCITY, Ar Nevada, Ar Carthage, etc.), Miles, Times.

WICHITA TO LITTLE ROCK, HOT SPRINGS. Table with columns: STATIONS (Lv WICHITA, Ar Durand, Ar Coffeyville, etc.), Miles, Times.

KANSAS CITY TO LITTLE ROCK, HOT SPRINGS, NEW ORLEANS. Table with columns: STATIONS (Lv KANSASCITY, Lv Osawatomie, Lv Durand, etc.), Miles, Times.

* Daily. ‡ Stops on signal. ⊕ Via Bus.

TRANSCONTINENTAL PULLMAN SERVICE

Between NEW YORK and SAN FRANCISCO

Via NEW YORK CENTRAL R. R. AND PENNSYLVANIA R. R. On Alternate Days East of Chicago

Thence CHICAGO, BURLINGTON & QUINCY R. R. DENVER & RIO GRANDE WESTERN R. R. WESTERN PACIFIC R. R.

Between New York and Chicago the through car is handled on the Pennsylvania "GENERAL" one day and on the New York Central "COMMODORE VANDERBILT" the next day—alternating between these two railroads.

SCHEDULE

WESTBOUND. Table with columns: Station (Lv New York City, Ar Chicago, etc.), Time (3:40 PM, 7:40 AM, etc.).

EASTBOUND. Table with columns: Station (Lv San Francisco, Ar Salt Lake City, etc.), Time (4:00 PM, 8:00 PM, etc.).

