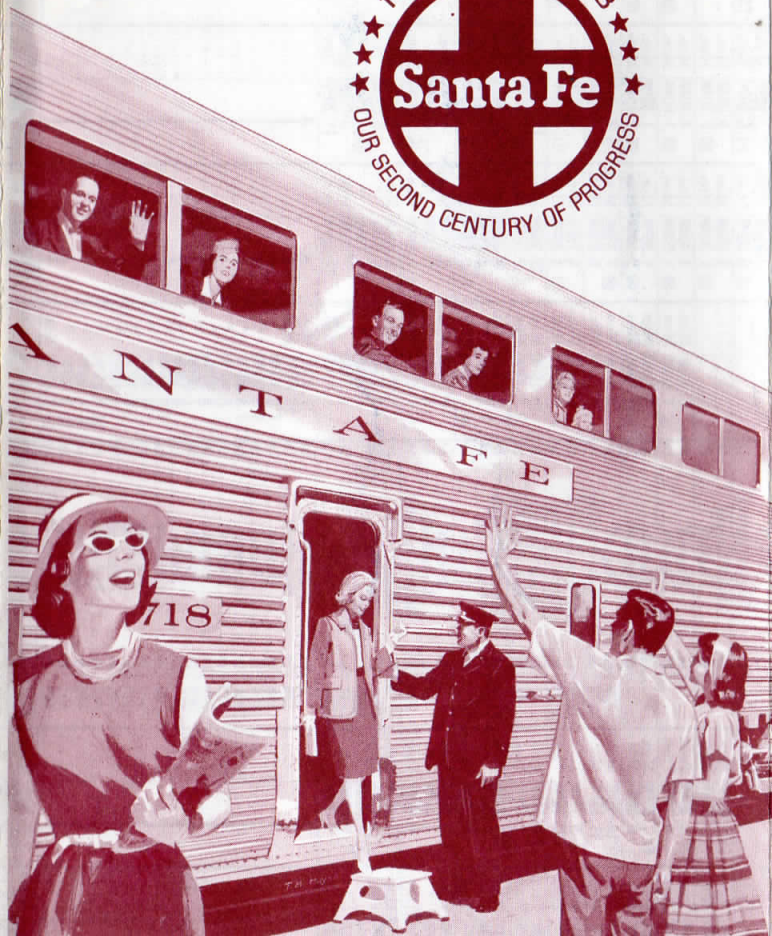


TIME TABLE

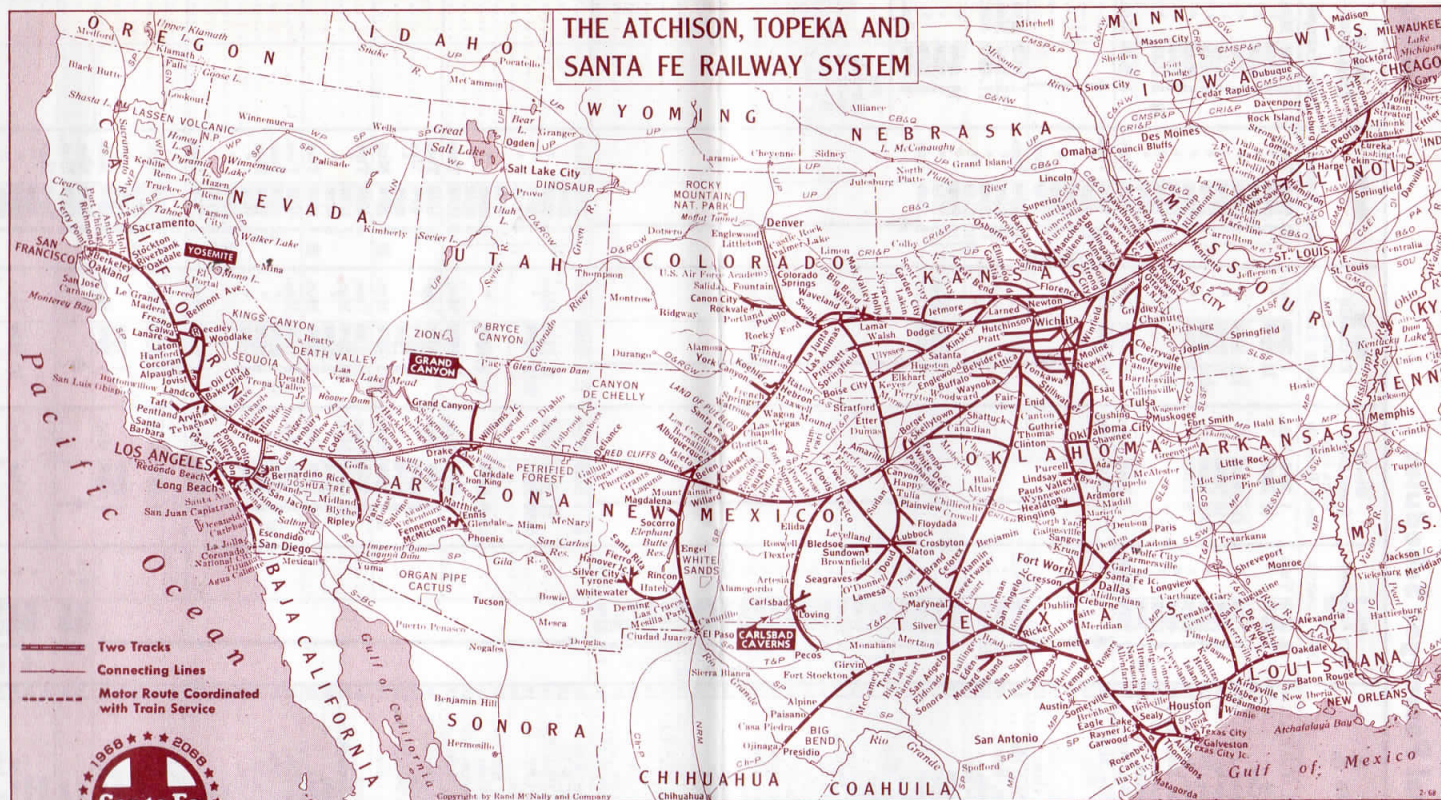


The Atchison, Topeka and Santa Fe Railway Co.



Condensed
Schedules of
Passenger Service

Issued:
July 15, 1968



Santa Fe's passenger fleet remains America's most relaxing ride. Even in the Jet Age.

Our 'name' trains are handling the mainstream of rail travelers between Chicago, Texas and California.

Across the vast areas shown on the map above, Santa Fe takes travelers through unusual scenery, interesting cities and points of historic interest that can be enjoyed best by train.

Santa Fe trains offer a variety of services and accommodations: family fares; one-price tickets, covering all major travel costs; credit cards; bargain meal prices; spacious, private sleeping rooms and relaxing stretch-out seats for economical coach travel. All of these features are available for Santa Fe trips on trains described in this time table.

It's fun to travel—take time to enjoy it on the Santa Fe.



SANTA FE PASSENGER TRAIN EQUIPMENT

SUPER CHIEF—Trains 17 and 18 Daily, Chicago—Kansas City—Los Angeles All Pullman Service

Dormitory Lounge Car . . . Chicago—Los Angeles.
Turquoise Room (for private dining) and Pleasure Dome Lounge Car . . . Chicago—Los Angeles.
Dining Car . . . Chicago—Los Angeles.
Sleeping Cars . . . Chicago—Los Angeles.
Sleeping Car . . . Kansas City—Los Angeles.
(Westbound, ready to occupy at 9:30 P.M. Eastbound, car can be occupied until 8 A.M.)
Roomettes, Bedrooms and Suites.
Radio and recorded musical programs in all cars, stock reports, newspapers and periodicals, "wake-up" coffee and other deluxe service.
June 13 to Sept. 6, 1968, inclusive, reclining seat leg rest chair cars, separate dining car and lounge, will be operated for chair car passengers. All chair car seats reserved.

TEXAS CHIEF—Trains 15 and 16 Daily, Chicago—Kansas City— Oklahoma City—Ft. Worth—Houston

Big Dome Lounge Car . . . Chicago and Houston.
Chair Cars . . . Chicago—Houston.
Dining Car . . . Chicago—Houston.
Lounge Car . . . Chicago—Houston.
Sleeping Cars . . . Chicago—Houston.
Chicago—Ft. Worth.
Chicago—Topeka—May be occupied at Topeka (westbound) until 7:30 a.m. Ready (eastbound) at 9:30 p.m.
Roomettes, Bedrooms, Drawing Rooms and Suites.

EL CAPITAN—Trains 17 and 18 Daily, Chicago—Kansas City— Los Angeles

All-Chair-Car Service
All seats reserved.
Baggage Car . . . Chicago—Los Angeles.
Dormitory—Baggage Car . . . Chicago—Los Angeles.
Hi-Level Lounge Car . . . Chicago—Los Angeles.
Observation deck and refreshments on upper level.
Kachina Coffee Shop for Snacks on lower level.
Hi-Level Dining Car . . . Chicago—Los Angeles.
All seats on upper level.
Hi-Level Chair Cars . . . Chicago—Los Angeles.
Stretch-out, reclining seats with legrest, all reserved.
Radio and recorded music throughout train. Courier Nurse Service.

TRAINS 23 and 24 Daily, Chicago—Los Angeles Pullman (Barstow—Los Angeles) and Chair Cars

Chair Cars . . . Chicago—Los Angeles.
Lunch Counter Dining Car . . . Chicago—Barstow.
Lounge Car . . . Chicago—Barstow (during summer season).
Sleeping Car . . . Barstow—Los Angeles.
(on Trains 1 and 2, San Francisco Chief, Chicago—Barstow).
Chair Car . . . Barstow—Los Angeles.
(on Trains 1 and 2, San Francisco Chief, Chicago—Barstow).

SAN FRANCISCO CHIEF—Trains 1 and 2 Daily, Chicago—Kansas City— Amarillo—San Francisco

Pullman and Chair Car Streamliner.
All chair car seats reserved.
Baggage Car . . . Chicago—Richmond.
Big Dome Lounge Car . . . Chicago—Richmond.
Observation deck on upper level, refreshments in lower lounge.
Dining Car . . . Chicago—Richmond.
Hi-Level Chair Cars . . . Chicago—Richmond.
Stretch-out, reclining seat with legrest, all reserved.
Chair Car . . . Chicago—Los Angeles.
(on Trains 23-24 Barstow—Los Angeles).
Sleeping Cars . . . Chicago—Richmond.
Sleeping Car . . . Chicago—Los Angeles.
(on Trains 23-24 Barstow—Los Angeles.)
Roomettes, Bedrooms, Compartments, Drawing Rooms and Suites
Courier Nurse Service.

THE TULSAN—Trains 211 and 212 Daily, Kansas City—Tulsa

Chair Car . . . Kansas City and Tulsa. Chair car on connecting train between Kansas City and Chicago.
Coffee-sandwich cart service Kansas City and Tulsa. Lounge car and Diner on connecting train between Kansas City and Chicago.

TRAINS 47 and 42 Daily between Phoenix and Williams Junction, Ariz.

(SEE NOTE A)
Baggage Car . . . Phoenix—Williams Junction.
Chair Car . . . Phoenix—Williams Junction.

TRAINS 15 and 14 Daily between Williams Junction and Grand Canyon, Ariz.

(SEE NOTE A)
Baggage Car . . . Williams Jet—Grand Canyon, Ariz.
Chair Car . . . Williams Jet—Grand Canyon, Ariz.

REFERENCE NOTES FOR TRAIN SCHEDULES SHOWN IN THIS TIME TABLE

- A. Trains marked with this reference in this time table are now subject to regulatory proceedings wherein Santa Fe seeks to discontinue their operation. Upon receipt of permission from these regulatory authorities trains will no longer operate. Please consult your nearest Santa Fe passenger agent or travel agency to assure yourself that these trains will be operating at the time of your trip.
- B. Train 23 stops at other points in Illinois to receive or discharge passengers for stations in Illinois, and receive for Kansas City or beyond.
- C. Train 23 stops at other points Emporia to Newton to receive passengers for points beyond Newton and discharge from Kansas City to Emporia.
- D. Train 23 stops at other stations Newton to Las Animas to receive passengers for La Junta and beyond or discharge from Newton and beyond.
- E. Train 23 flag stops at other stations in Missouri, in Kansas at Halstead, Stafford, St. John, Macksville and Cimarron; in Colorado at Thatcher; in New Mexico at Maxwell, Wagon Mound, Gloria, Los Cerrillos and Domingo; and Victorville, California.
- G. Train No. 24 flag stops at all stations not shown between Kansas City and Chicago.
- H. Trains No. 1 and 2 flag stop at other stations Waynoka to Clovis.
- I. Train No. 24 stops at any station La Junta to Hutchinson to receive passengers for Newton and beyond and discharge from La Junta and beyond.
- J. Train No. 24 stops at other points Newton to Emporia to receive passengers for points between Newton and Emporia, Kansas City and beyond and to discharge from points west of Emporia.
- ① Stops to receive passengers for scheduled stops in California.
- ② Stops to receive passengers for Lamy, New Mexico or scheduled stops beyond.
- ③ Stops to receive passengers for Tulsa, Woodward and beyond.
- ④ Stops to discharge passengers from Chicago and beyond and to receive passengers for Kansas City and beyond.
- ⑤ Stops to receive passengers for Newton and beyond and to discharge passengers from Kansas City and beyond.
- ⑥ Stops to receive passengers for San Bernardino and beyond and to discharge passengers from Albuquerque and beyond.
- ⑦ Stops to receive passengers for San Bernardino and beyond, and discharge passengers from Newton and beyond.
- ⑧ Stops to receive passengers for beyond Albuquerque and to discharge passengers from Las Vegas, New Mexico and beyond.
- ⑨ Stops to discharge passengers from Belen and beyond.
- ⑩ Stops to receive passengers for Amarillo and beyond and to discharge passengers from Kansas City and beyond.
- ⑪ Stops to receive passengers for Clovis and beyond and to discharge passengers from beyond Amarillo.
- ⑫ Stops to receive passengers for Belen and beyond and to discharge passengers from beyond Clovis.
- ⑬ Stops to discharge passengers from Kansas City and beyond and south of Newton and receive passengers for Albuquerque and beyond.
- ⑭ Stops to discharge passengers from Oklahoma City and beyond and receive passengers for Fort Worth and beyond.
- ⑮ Stops to receive passengers for Newton and beyond and discharge passengers from San Bernardino and beyond.

- ⑯ Stops to receive passengers for Albuquerque and beyond and discharge passengers from San Bernardino and beyond.
 - ⑰ Stops to receive passengers for Kansas City and beyond and discharge passengers from Albuquerque and beyond.
 - ⑱ Stops to discharge passengers from Kansas City and beyond and to receive passengers for Chicago and beyond.
 - ⑲ Stops to receive passengers from Clovis and beyond.
 - ⑳ Stops to receive passengers for Clovis or beyond and to discharge passengers from Belen and beyond.
 - ㉑ Stops to receive passengers for Clovis or beyond and to discharge passengers from Belen and beyond.
 - ㉒ Stops to receive passengers from beyond Amarillo and to discharge passengers from Clovis or beyond.
 - ㉓ Stops to receive passengers for Wichita and beyond or to discharge passengers from Chicago.
 - ㉔ Stops to discharge passengers from Kansas City and beyond or to receive passengers for Albuquerque and beyond.
 - ㉕ Stops to receive passengers for Kansas City and beyond or to discharge passengers from Clovis or beyond.
 - ㉖ Stops to receive passengers for La Plata and beyond and to discharge passengers from Kansas City and beyond.
 - ㉗ Stops to discharge passengers from Woodward, Okla. and beyond.
 - ㉘ Stops to discharge passengers from Oklahoma City and beyond and to receive passengers for Houston.
 - ㉙ Stops to discharge passengers from Houston and to receive passengers for Oklahoma City and beyond.
 - ㉚ Motor Coach service available between Lamy and Santa Fe until August 26th, taxi service after that date. See special note at right.
 - ㉛ Stops to receive passengers for Las Vegas and beyond and to discharge passengers from Albuquerque and beyond.
 - ㉜ Stops to receive passengers for Las Vegas and beyond and to discharge passengers from beyond Albuquerque.
 - ㉝ Stops to receive passengers for Oceanside and beyond.
 - ㉞ Stops to discharge passengers from Los Angeles.
 - ㉟ Stops to discharge passengers from San Bernardino and beyond.
 - ㊱ Stops to discharge passengers from Oceanside and beyond.
 - ㊲ Stops to receive passengers for Los Angeles or to discharge passengers from Oceanside and beyond.
 - ㊳ Stops to receive passengers for Los Angeles.
 - ㊴ Stops to receive passengers for Kansas City and beyond and to discharge passengers from Newton and beyond.
 - ㊵ Stops to receive passengers for north of Barstow and to discharge passengers from Clovis and beyond.
 - ㊶ Stops to receive passengers for Clovis and beyond and to discharge passengers from north of Barstow.
 - f Flag stop to receive or discharge paying passengers.
 - ☐ Motor Coach service. Regular railroad tickets may be exchanged at Williams Junction or Grand Canyon for Motor Coach tickets without additional charge. Certain employee and other Special Rate Tickets will be exchanged only on payment of the difference.
 - ☒ Motor Coach. Rail tickets honored.
- C.S.T. Central Standard Time. M.S.T. Mountain Standard Time.
P.S.T. Pacific Standard Time.

Uniform Time Act Arrangements

Through October 27 all times shown are Advanced Standard time as defined in the Uniform Time Act of 1966. Times shown for Arizona points are one hour earlier than the local time observed in that state during the same period.

Service between Richmond, Berkeley, Oakland and San Francisco

Santa Fe passenger trains serving San Francisco Bay area operate into and out of Richmond Station with passengers making trainside motor coach connections for the Santa Fe Passenger Terminal (Forty-four Fourth Street just off Market), San Francisco. Stop is made at Berkeley Station (University Avenue and West Street) and Oakland (2040 Telegraph Avenue).

Service between Lamy and Santa Fe

Motor Coach transportation provided between Santa Fe and Lamy, New Mexico until August 26th. After that date, taxi service will be available on "will call" basis that must be arranged by train conductor or ticket agent at Santa Fe, N.M. Cost is included in rail ticket.

Special Ticket Conditions Super Chief and El Capitan

For Super Chief and El Capitan, Trains 17 & 18. "Special Tickets" will not be honored; this includes Special Rate, Charity, Clergy, D.V.S., V.A.H., Blind and Attendant, Employee, Drover, Caretaker, Livestock and Poultry Attendant and Banana Messenger tickets. Show Script will not be honored.

Attendant and Transfer Service at Chicago

A uniformed agent of the Railroad Transfer Service, Inc. will arrange for transfer of passengers and baggage to other stations or for the handling of baggage from Dearborn Station to any city address. Taxicab service available.

Passengers and their hand baggage will be transferred by Railroad Transfer Service to other depots upon surrender of transfer coupon from their through ticket.

Transfer and Storage of Hand Baggage between Trains: Passengers holding tickets through Chicago, including Railroad Transfer Service coupon, and having more than three hours between trains, may deliver their hand baggage to the Railroad Transfer Service Desk at incoming depots at cost of 50c per piece transfer charge and receive claim check for reclaiming baggage at parcel room (24 hours storage) of outgoing depots. The Railroad Transfer Service coupon—included as part of your through ticket—also provides transfer in Railroad Transfer Service vehicles from your incoming depot to outgoing depot.

Note A . . . Trains marked with this reference in this time table are now subject to regulatory proceedings wherein Santa Fe seeks to discontinue their operation. Upon receipt of permission from these regulatory authorities these trains will no longer operate. Please consult your nearest Santa Fe passenger agent or travel agency to assure yourself that these trains will be operating at the time of your trip.

Now you can charge all of your Santa Fe travel costs with Midwest and BankAmericard charge cards at Santa Fe or through your travel agent



Condensed Passenger Schedules between Chicago, Kansas, Oklahoma & Texas

Read downRead up

Table 2		No. 24	No. 16
No. 23	No. 15	Texas Chief	
Miles	Miles		
9.00AM	5.20PM	Lv. Chicago, Ill. (C.S.T.)	Ar. 10.00PM
9.55AM	6.10PM	Lv. Joliet	Ar. 8.10AM
10.45AM	6.29PM	Lv. Coal City	Ar. 8.40PM
11.25AM	6.55PM	Lv. Streator	Ar. 9.08PM
12.15PM	7.30PM	Lv. Chillicothe	Ar. 9.20PM
1.15PM	8.15PM	Lv. Galesburg, Ill.	Ar. 6.21PM
2.35PM	9.10PM	Lv. Ft. Madison, Iowa	Ar. 5.25PM
3.35PM	10.30PM	Lv. La Plata, Mo.	Ar. 3.50PM
4.17PM	11.05PM	Lv. Marceline	Ar. 3.10PM
5.40PM	12.50AM	Lv. Carrollton	Ar. 2.31PM
		Lv. Kansas City, Mo.	Ar. 1.15PM
		Lv. Kansas City, Mo.	Ar. 12.10PM
		Lv. Olathe, Kan.	Ar. 11.30AM
		Lv. Ottawa	Ar. 11.00AM
		Lv. Garnett	Ar. 10.28AM
		Lv. Iola	Ar. 10.02AM
		Lv. Humboldt	Ar. 9.54AM
		Lv. Chanute	Ar. 9.45AM
		Lv. Cherryvale	Ar. 9.12AM
		Lv. Independence	Ar. 9.00AM
		Lv. Caney, Kan.	Ar. 8.31AM
		Lv. Bartlesville, Okla.	Ar. 8.10AM
		Lv. Collinsville	Ar. 7.35AM
		Lv. Tulsa, Okla.	Ar. 7.15AM
		Lv. Kansas City, Mo.	Ar. 12.55PM
		Lv. Lawrence, Kan.	Ar. 12.01PM
		Lv. Topeka	Ar. 11.30AM
		Lv. Osage City	Ar. 10.51AM
		Lv. Emporia	Ar. 10.25AM
		Lv. Newton	Ar. 9.35PM
		Lv. Newton	Ar. 9.25PM
		Lv. Wichita	Ar. 8.45PM
		Lv. Winfield	Ar. 8.00PM
		Lv. Arkansas City, Kan.	Ar. 7.45PM
		Lv. Newkirk, Okla.	Ar. 7.18PM
		Lv. Ponca City	Ar. 7.05PM
		Lv. Perry	Ar. 6.35PM
		Lv. Guthrie	Ar. 6.05PM
		Lv. Oklahoma City	Ar. 5.30PM
		Lv. Norman	Ar. 4.55PM
		Lv. Purrell	Ar. 4.40PM
		Lv. Pauls Valley	Ar. 4.06PM
		Lv. Ardmore	Ar. 3.15PM
		Lv. Marietta, Okla.	Ar. 2.55PM
		Lv. Gainesville, Texas	Ar. 2.31PM
		Lv. Gainesville, Texas	Ar. 2.10PM
		Lv. Dallas	Ar. 12.45PM
		Lv. Gainesville, Texas	Ar. 2.25PM
		Lv. Fort Worth	Ar. 1.08PM
		Lv. Fort Worth	Ar. 12.25PM
		Lv. Dallas	Ar. 11.10AM
		Lv. Dallas	Ar. 2.25PM
		Lv. Fort Worth	Ar. 1.10PM
		Lv. Fort Worth	Ar. 12.53PM
		Lv. Cleburne	Ar. 12.23PM
		Lv. McGregor	Ar. 11.07AM
		Lv. Temple	Ar. 10.45AM
		Lv. Belleville Yard	Ar. 8.50AM
		Lv. Houston, Texas (C.S.T.)	Ar. 7.20AM

MISCELLANEOUS INFORMATION

Santa Fe time tables are as accurate as experience and great care can make them, but the Atchison, Topeka and Santa Fe Railway Company is not responsible for errors in time tables, nor for the inconvenience or damage resulting from delayed trains, or failure to make connections, or shortage of equipment. Schedules and equipment shown in this time table are subject to change without notice.

BUY TICKETS before boarding trains.
CHILDREN under 5 years of age, when accompanied by parent or guardian, will be carried free. Children 5 years and under 12 years, one-half fare. Children 12 years of age or over, full fare. Children of any age occupying exclusively a reserved seat will be charged full adult extra fare on El Capitan, Trains 17 and 18, and full adult seat charge on the San Francisco Chief, Trains 1 & 2 (including Chicago-Los Angeles cars).

FAMILY FARES are in effect daily between all points on the Santa Fe, and offer substantial savings for family groups. Fares apply for first class or coach tickets: one-way or round trip.

ADJUSTMENT OF FARES. In cases of dispute with conductors or agents, pay the fare required, take receipt and communicate with the Asst. Gen. Passr. Traffic Manager, Topeka, Kansas.

REDEMPTION OF TICKETS. Tickets unused, or partly used, will be redeemed under tariff regulations at proper value.

STOPOVERS are allowed at all stops en route within limit of ticket. Passengers must notify conductor before arrival at stopover point if stopover is desired.

INVALIDS OR DISABLED PERSONS will not be permitted to occupy wheel or invalid chairs, or cots or stretchers while traveling in chair car, Pullman sleeping car, or baggage car. Such conveyances may be used to assist in taking invalid or disabled persons into and out of train, if such passengers will occupy regular accommodations and are accompanied by attendant holding transportation who will take care of them enroute, also entering and leaving the train. Wheel chair, cot or stretcher will be handled in baggage car and included in weight and value of passengers' baggage allowance.

WHEEL CHAIRS AVAILABLE AT MAJOR STATIONS. Ask Santa Fe personnel on duty for assistance with this service.

BAGGAGE. Passengers should check all baggage except that needed enroute. Check a day in advance if possible. Check only to stations shown in joint baggage circular. Checkable baggage is defined as personal effects but does not include liquids, jewelry, cameras, money, negotiable papers, fragile articles, typewriters, radios or foodstuffs. Household goods must not be included in checked baggage.

Baggage allowance is as follows: up to 150 pounds not to exceed \$100 valuation for each adult ticket and one-half of this allowance for each child's ticket. 300 pounds allowed on each Family Plan ticket but valuation must not exceed \$200. No single piece exceeding 300 pounds, or single shipment exceeding \$2500 will be checked. No carton exceeding 50 pounds will be checked.

A service charge of 25c for each piece of hand baggage and 50c for each trunk and articles other than hand baggage will be made at time of checking.

Intrastate in California. Service charge will not apply. Limitations on valuation are as follows: trunk \$100, valise, suitcase or traveling bag \$50, and box, bundle or package \$10.

Value in excess of allowance may be declared and will be charged for at rate of 30 cents for each additional \$100; California intrastate 20 cents.

Delivery service may be arranged with Special Delivery checks in principal cities direct to steamship piers, hotels and business or private addresses, on C.O.D. basis.

BAGGAGE INSURANCE. Insurance covering full value of passengers' baggage and personal effects for entire trip away from home is sold at principal offices.

RED CAP BAGGAGE. Luggage accepted by Red Cap Porters for handling to Pullman or chair cars must be claimed on train at time of departure. This service does not include delivery at destination.

FREE SELF SERVICE BAGGAGE CARTS available at many Santa Fe Stations. Consult agent regarding location.

HAND BAGGAGE. Hand baggage in chair cars or Pullmans should be of size, weight and shape that can be conveniently and safely accommodated in baggage rack or luggage compartment. Golf Bags, Skis, Fishing Rods and other unwieldy items must be checked for movement in baggage car.

DOGS, CATS and SMALL HOUSEHOLD PETS will be handled in baggage car (in crates) subject to tariff regulations and charges.

Passengers occupying private rooms including roomettes in Pullman cars may take not exceeding two animals in any one room PROVIDED they are carried in and out of car in baskets or other containers; however, dogs may be on leash and muzzled in lieu of in container. The carrying of dogs, cats, etc. in chair cars or coaches is prohibited.

LOST ARTICLES. Inquiry for lost articles should be directed to Manager—Baggage Services at Topeka, Kansas, or Manager—Baggage, Los Angeles, California.

Inquiry for articles lost in Pullman cars should be referred to nearest District Superintendent of The Pullman Company.

The carriers are not responsible for unchecked articles carried in passenger cars or left in stations.

PILLOW SERVICE

As a convenience to chair car passengers, pillows may be rented from NEWS AGENTS on principal trains—trains 17 and 18, El Capitan, trains 1 and 2, San Francisco Chief and trains 15 and 16, Texas Chief. The charge is 50¢ for the entire trip. Same charge also applies on other trains where pillows are available.

SANTA FE TRAFFIC OFFICES

Albuquerque, N. M. 87101.....Santa Fe Station, Ph. 247-0741
Amarillo, Tex. 79101.....Santa Fe Station, Ph. 376-5131
Atlanta, Ga. 30303...1314 Rhodes-Haverty Bldg., Ph. JACKson 4-4926
Bakersfield, Calif. 93301.....Santa Fe Station, Ph. 325-5751
Beaumont, Tex. 77701.....2125 Louisiana St., Ph. T.ErMinal 2-3411
Boston, Mass. 02116.....216 Tremont St., Ph. LIberty 2-5323
Buffalo, N. Y. 14203....Suite 1104, 10 Lafayette Square, Ph. 854-5230
Carlsbad, N. M. 88220.....104 W. Fox St., Ph. TUxedo 7-3564
Chicago, Ill. 60604.....238 S. Michigan Ave., Ph. HArison 7-4900

For reservations or information in Chicago Ph. Webster 9-4910
Cincinnati, Ohio 45202...Gwynne Bldg., 6th & Main Sts., Ph. 621-2911
Cleveland, Ohio 44113.....1640 Illuminating Bldg., Ph. 241-0226
Dallas, Tex. 75201.....1800 Main St., Ph. RiVerside 7-6301
Denver, Colo. 80202.....518 17th Street, Ph. 266-3888
Des Moines, Iowa 50309....601 Equitable Bldg., Ph. CHerry 4-7173
Detroit, Mich. 48237.....14650 W. Eight Mile Rd., Ph. 566-4040
El Paso, Tex. 79901.....Union Station, Ph. 532-6596
Fort Worth, Tex. 76102.....1601 Jones St., Ph. EDison 2-5141
Fresno, Calif. 93718.....Santa Fe Station, Ph. 233-4595
Hollywood, Calif. 90028....1551 N. Vine St., Ph. HOLlywood 9-1191
Houston, Tex. 77002.....811 Rusk Ave., Ph. CApitol 8-6441
Indianapolis, Ind. 46204....405 Guaranty Bldg., Ph. MEtrose 5-6549
Kansas City, Kan. 66101...Town House Hotel, Ph. ATWate 1-1550
Kansas City, Mo. 64105....11th & Wyandotte, Ph. MAYfair 1-4000

For reservations or information in Kansas City Ph. GRand 1-5636
Los Angeles, Calif. 90013....523 So. Olive St., Ph. MADison 8-0111
For reservations or information in Los Angeles Ph. MADison 4-0171
Lubbock, Tex. 79401.....Santa Fe Station, Ph. PORter 3-6454
Memphis, Tenn. 38103.....218 Falls Bldg., Ph. 526-5888
Mexico City, 6, D.F., Mex.....Napoles 36, Ph. 14-95-64
Milwaukee, Wis. 53203....401 Majestic Bldg., Ph. BRoadway 1-7139
Minneapolis, Minn. 55402, 1145 Nthwstrn. Bk. Bldg., Ph. FEderal 3-1274
Monterrey, N.L., Mex.

.....Guyana Francesa 123 Col. Vista. Hermosa, Ph. 46-08-10
New Orleans, La. 70113.....1001 Loyola Ave., Ph. 525-3393
New York, N.Y. 10017.....330 Madison Ave., Ph. 661-6161
Oakland, Calif. 94612.....2040 Telegraph Ave., Ph. 834-6633
Oklahoma City, Okla. 73102...100 S. Santa Fe Ave., Ph. CEntral 2-2501
Pasadena, Calif. 91101.....Santa Fe Station, Ph. SYcamore 2-1191
Peoria, Ill. 61602.....809 Jefferson Bldg., Ph. 673-3867
Philadelphia, Pa. 19107.1416 Phila. Nat. Bank Bldg., Ph. LOcust 8-5060
Phoenix, Ariz. 85004.....858 First Nat. Bank Bldg., Ph. 258-8571
Pittsburgh, Pa. 15222.....819 Oliver Bldg., Ph. 281-2937
Pomona, Calif. 91767....2701 N. Garey Ave., Ph. LYcoming 3-2521
Portland, Ore. 97205...902 American Bank Bldg., Ph. CApitol 7-3671
Riverside, Calif. 92507....3750 Santa Fe Ave., Ph. OVerland 6-1331
Sacramento, Calif. 95814.....901 "H" St., Ph. GIlibert 2-3605
St. Louis, Mo. 63101.....300 Columbia Bldg., Ph. 241-7120
Salt Lake City, Utah 84102.....540 E. 5th South, Ph. 322-1238
San Angelo, Tex. 76901.....Santa Fe Station, Ph. 653-1341
San Antonio, Tex. 78212...803 Kallison Tower Bldg., Ph. CApitol 7-7246
San Bernardino, Calif. 92410....Santa Fe Station, Ph. TUrner 4-2111
San Diego, Calif. 92101.....1050 Kettner Blvd., Ph. 232-6225

For reservations or information in San Diego Ph. 232-2961
San Francisco, Calif. 94103.....44 Fourth St., Ph. 781-7600

For reservations or information in San Francisco Ph. 982-3160
San Jose, Calif. 95113.....28 N. First St., Ph. 292-2737
Santa Ana, Calif. 92701.....Santa Fe Station, Ph. 543-5354
Seattle, Wash. 98101...The 1411 Fourth Ave. Bldg., Ph. MUtual 2-3195
Topeka, Kan. 66612.....Santa Fe Bldg., Ph. CEntral 4-0481
Washington, D.C. 20036
.....Suite 1020, 1100 Connecticut Ave., N.W., Ph. 659-2010
Wichita, Kan. 67202.....425 E. Waterman St., Ph. AMherst 5-8511
Winston-Salem, N.C. 27101.....318 Nissen Bldg., Ph. PArk 4-6475

See your Travel Agent or nearest Santa Fe Traffic Office.

Williams Junction and Phoenix

Read downRead up

Table 3		No. 47	No. 42
Daily	Miles	Daily	
AM		Lv. Williams Jet., Ariz. (M.S.T.)	Ar. 8.45 PM
1.30	0	Lv. Williams	Ar. 8.27 PM
4	30	Lv. Ash Fork	Ar. 7.45 PM
2.52	51	Lv. Drake	Ar. 7.11 PM
3.24	96	Lv. Skull Valley	Ar. 6.23 PM
3.47	102	Lv. Kirkland	Ar. 6.12 PM
4.29	117	Lv. Hillside	Ar. 5.44 PM
4.58	125	Lv. Date	Ar. 5.27 PM
5.16	139	Lv. Congress	Ar. 5.02 PM
5.44	155	Lv. Wickenburg	Ar. 4.41 PM
6.10	166	Lv. Castle Hot Springs	Ar. 4.18 PM
6.34	192	Lv. Sun City	Ar. 3.50 PM
6.58	195	Lv. Peoria	Ar. 3.46 PM
7.12	206	Lv. Glendale	Ar. 3.39 PM
7.22	209	Lv. Phoenix, Ariz. (M.S.T.)	Ar. 3.15 PM
8.00			

Los Angeles and San Diego

Read downRead up

Table 4		No. 73	No. 75	No. 77
Daily	Daily	Daily		
Miles	Miles			
PM	AM	Lv. Los Angeles, Cal. (P.S.T.)	Ar. 9.55 AM	PM 6.55
7.45	11.00	Lv. Pico Rivera	Ar. 9.12 AM	PM 6.12
8.25	11.40	Lv. Fullerton (Disneyland)	Ar. 9.04 AM	PM 6.05
8.30	11.45	Lv. Anaheim (Disneyland)	Ar. 8.52 AM	PM 5.54
		Lv. Orange	Ar. 8.17 PM	PM 5.18
8.45	11.59	Lv. Santa Ana	Ar. 7.55 PM	PM 4.67
		Lv. San Juan Capistrano	Ar. 7.37 PM	
9.18	12.45	Lv. San Clemente	Ar. 7.31 PM	
9.42	12.55	Lv. Oceanside	Ar. 7.00 PM	
9.54	1.19	Lv. Encinitas		
10.04	9.45	Lv. DelMar (Rancho Santa Fe)		
10.40	1.55	Lv. San Diego, Cal. (P.S.T.)		