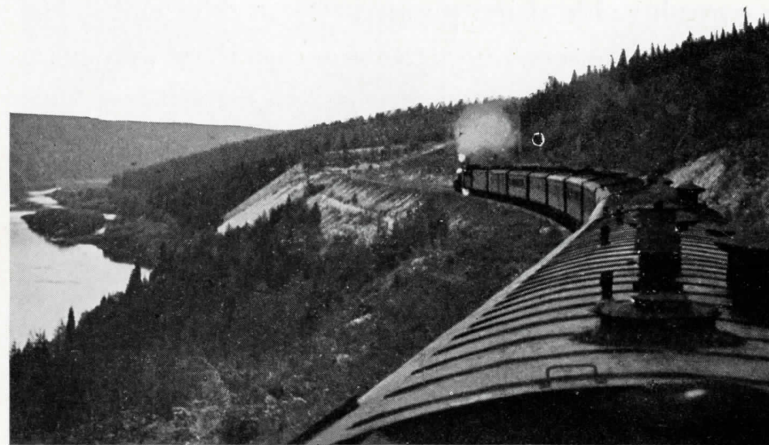


TRANS-SIBERIAN EXPRESS



**THE FASTEST AND MOST COMFORTABLE ROUTE
BETWEEN EUROPE AND THE FAR EAST**



ACROSS A SIXTH OF THE WORLD

The Trans-Siberian Express is the shortest and fastest route to the Far East from Europe. It is an inexpensive and comfortable way to travel from Western centers to Japan and China and other Oriental countries.

The Trans-Siberian traverses the whole width of the largest country in the world. Leaving the metropolitan cities of Leningrad or Moscow the express speeds through the central steppe area, crosses the Volga and plunges into the forest regions of the great Siberian Taiga.

It emerges into the beautiful surroundings of Lake Baikal and continues on over the hills to the north. There are two routes: One circles round Manchoukuo and goes to Vladivostok; a branch line runs to Otpor on the Soviet border opposite Manchouli and makes connections with Harbin, Mukden and Shanghai.

The scenic interest of the trip is heightened by the mighty panorama of construction going forward across



The wide gauge of the Express permits spacious dining cars

TRANS-SIBERIAN E X P R E S S

The Trans-Siberian railway speeds over tracks 6,300 miles long linking the Atlantic and the Pacific. It covers more than a fourth of the globe at its latitude. The express trains are made up of continental type sleeping cars but have more spacious compartments and corridors due to the wider gauge used on Soviet lines. Each compartment is equipped with a wash-room, and lavatories are at both ends of the car corridor. Tea is served day and night from a samovar in each car. Two porters are on continuous duty. Extensions are provided for radio and music recordings to each compartment.

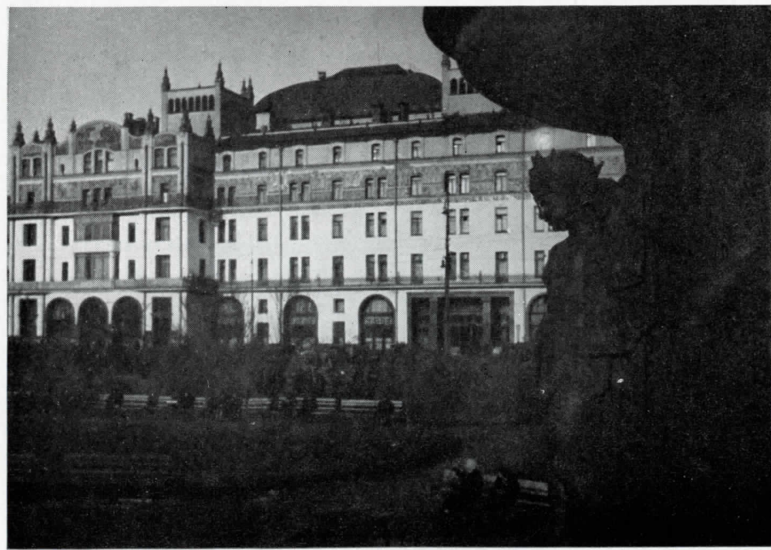
Intourist guide interpreters speaking all major European languages are at the disposal of passengers on all de-luxe expresses; their services are gratis. Baths and showers are provided on all de-luxe trains. Medical attention is likewise provided free of charge.



A corridor on the Trans-Siberian Express Wagon-Lits.

IN THE SOVIET UNION . . .

Trans-Siberian travelers will find many opportunities for thrilling extensions to the trip across the country. Breaking the journey at either Leningrad or Moscow, one may take advantage of Intourist's all-inclusive daily rates to visit points of interest in European U.S.S.R. These tours are of from five to thirty-one days in duration and include, besides Moscow and Leningrad, Kharkov, Kiev, Dnieproges, down the Volga from Gorki to Stalingrad, to Rostov-on-Don, over the Caucasus to Tiflis, Baku and Batum, by boat along the Black Sea Riviera, to lovely Crimea and Odessa. The tours may be taken as arranged or special itineraries can be prepared. From wherever the



One of Intourist's fine hotels, The Metropole in Moscow

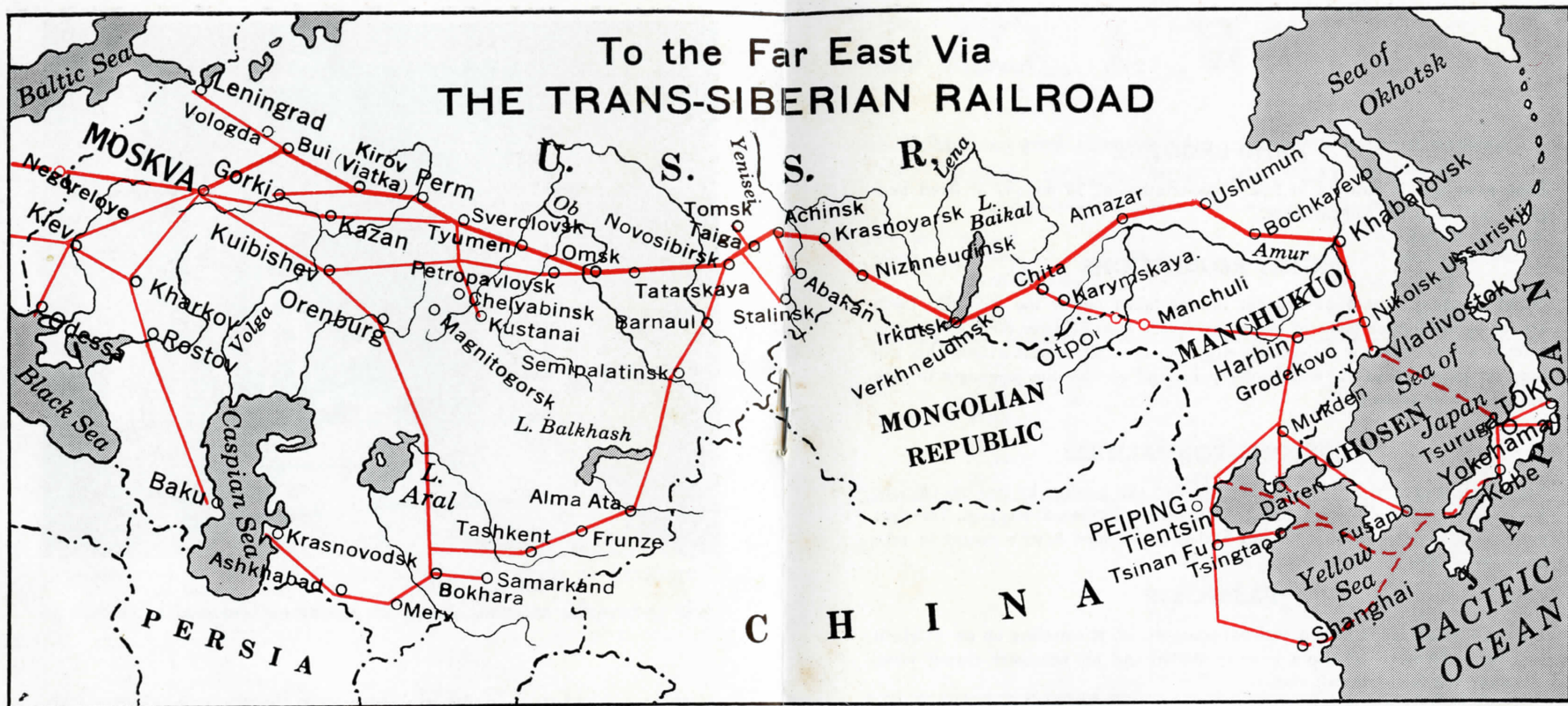


The Cameron Gallery at Detskoe Selo, one of the numerous groups of palaces in Leningrad

tour is completed, easy air, train or boat connections can be made.

Just a few days in Moscow or Leningrad gives one the *feel* of the new life the Soviet people are making for themselves. . . . One sees giant steel works and machine building plants . . . huge collective farms . . . modern social and cultural institutions . . . vast scientific undertakings. All to be remembered for many years. Travel incidentals are not expensive and the all-inclusive daily rates are moderate. They are \$15.00 per day first class; \$8.00 per day second and \$5.00 third. These rates include meals, hotels, all transportation on tour, transfers, sightseeing daily with the service of trained guide-interpreters.

To the Far East Via THE TRANS-SIBERIAN RAILROAD



SERVICE TO EASTERN POINTS

From Vladivostok there is a steamer service every ten days to Tsuruga in Japan from where, by rail, all Japanese centers may be reached. The Soviet Steamer "Sever" maintains regular service between Vladivostok and Shanghai. The trip is of six days duration.

In the land-locked harbor of Vladivostok, great center of the Maritime provinces stretching from the Sea of Japan to the Arctic Ocean



S E R V I C E

HAND BAGGAGE

Each passenger is entitled to free transportation of 75 pounds of hand baggage, carried in the compartment.

MONEY REGULATIONS

Soviet currency cannot be brought into or taken out of the U.S.S.R. Upon arrival at the border point of entry passengers must register their money and valuables and receive a registration slip from the custom authorities. This slip must be presented at the exit border point and entitles the passenger to take out the money registered.

CUSTOMS FORMALITIES

Baggage is inspected both at the entrance and exit borders by customs officials. Every passenger is allowed to bring in duty free all personal baggage. Travelers purchasing objects of value in the Soviet Union must have a permit to take them out of the country.

PASSPORTS

Every passenger must have a national passport, or, if traveling on an Affidavit of Identity, must have also a re-entry permit and all necessary transit visas, including the Soviet transit visa.

VISA FOR TRANSIT PASSENGERS EN ROUTE THROUGH THE USSR

TRANSIT VISA, arranged in connection with the purchase of rail orders for *direct* passage through the U.S.S.R., is issued *without* stopover privilege in the U.S.S.R. If *stopover* in the Soviet Union is to be made, this must be indicated at the time transit visa application is filed, stating the length of stopover desired. Arrangements for stopover *cannot* be made after arrival in the Soviet Union. Intourist services at the daily rates of \$15 for First Class, \$8 for Tourist Class and \$5 for Third Class may be purchased for the period of the stopover in the U.S.S.R.

Application for a Soviet transit visa is filed on Soviet Consular forms (NOT tourist visa application cards) in triplicate, with three photographs attached. Consular forms may be secured from Intourist, Inc. Cost of Transit Visa for an American passport, \$11.42.

Passengers in *direct* transit through the U.S.S.R. are warned that trains leave Moscow for Vladivostok on Monday, Wednesday and Saturday. For Manchouli (Otpor) on Thursday and Sunday.

We recommend the purchase of Intourist Service to eliminate the transit visa charge.

S C H E D U L E S

(Schedules and rates subject to change without notice.)

PARIS—BERLIN—MOSCOW—VLADIVOSTOK

All Trans-Siberian R.R. Rates quoted are at a reduction of 50%

Days of week	Arrival and Dep.		Stations		Arrival and Dep.	Days of week
Daily	23.45	Lv.	Paris		23.45	
	17.40	Ar.	Berlin		17.40	Daily
	17.43	Lv.	Berlin		23.43	
	8.36	Ar.	Warsaw			
	9.12	Lv.	Warsaw			
	17.03	Ar.	Stolpce			
Daily	17.33	Lv.	Stolpce			
	20.05	Ar.	Negoreloye			
	21.35	Lv.	Negoreloye			
	11.35	Ar.	Moscow			
			Tilsit	Ar.	10.00	
			Tilsit	Lv.	10.27	
			Daugavpils	Ar.	19.45	
			Daugavpils	Lv.	20.00	
			Indra	Ar.	21.24	Daily
			Indra	Lv.	21.45	
			Bigosovo	Ar.	23.15	
			Bigosovo	Lv.	0.45	
			Moscow	Ar.	15.08	
Exp. No. 2			Stations		Local No.44	
Mon. Wed. Sat.	14.20	Lv.	Moscow	Lv.	21.53	Mon. Wed. Fri. Sun.
Tue. Thu. Sun.	9.12	Ar.	Kirov (Viatka)	Ar.	23.39	Tue. Thu. Sat. Mon.
Tue. Thu. Sun.	9.32	Lv.	Kirov (Viatka)	Lv.	0.07	Wed. Fri. Sun. Tue.
Tue. Thu. Sun.	19.23	Ar.	Perm	Ar.	12.42	Wed. Fri. Sun. Tue.
Tue. Thu. Sun.	19.43	Lv.	Perm	Lv.	13.12	Wed. Fri. Sun. Tue.
Wed. Fri. Mon.	4.02	Ar.	Sverdlovsk	Ar.	23.46	Wed. Fri. Sun. Tue.
Wed. Fri. Mon.	4.22	Lv.	Sverdlovsk	Lv.	0.25	Thu. Sat. Mon. Wed.
Wed. Fri. Mon.	22.52	Ar.	Omsk	Ar.	24.00	Thu. Sat. Mon. Wed.
Wed. Fri. Mon.	23.12	Lv.	Omsk	Lv.	0.34	Fri. Sun. Tue. Thu.
Thu. Sat. Tue.	11.15	Ar.	Novosibirsk	Ar.	14.56	Fri. Sun. Tue. Thu.
Thu. Sat. Tue.	11.40	Lv.	Novosibirsk	Lv.	15.41	Fri. Sun. Tue. Thu.
Fri. Sun. Wed.	4.32	Ar.	Krasnoyarsk	Ar.	12.04	Sat. Mon. Wed. Fri.
Fri. Sun. Wed.	4.52	Lv.	Krasnoyarsk	Lv.	12.34	Sat. Mon. Wed. Fri.
Sat. Mon. Thu.	7.28	Ar.	Irkutsk	Ar.	20.10	Sun. Tue. Thu. Sat.
Sat. Mon. Thu.	8.03	Lv.	Irkutsk	Lv.	20.55	Sun. Tue. Thu. Sat.
Sat. Mon. Thu.	18.47	Ar.	Verkhneudinsk	Ar.	11.40	Mon. Wed. Fri. Sun.
Sat. Mon. Thu.	19.12	Lv.	Verkhneudinsk	Lv.	12.10	Mon. Wed. Fri. Sun.
Sun. Tue. Fri.	8.37	Ar.	Chita	Ar.	6.16	Tue. Thu. Sat. Mon.
Sun. Tue. Fri.	9.01	Lv.	Chita	Lv.	7.01	Tue. Thu. Sat. Mon.
Sun. Tue. Fri.	10.56	Ar.	Karimskaya	Ar.	9.35	Tue. Thu. Sat. Mon.
Sun. Tue. Fri.	11.01	Lv.	Karimskaya	Lv.	9.43	Tue. Thu. Sat. Mon.
Wed. Fri. Mon.	2.30	Ar.	Khabarovsk	Ar.	16.30	Fri. Sun. Tue. Thu.
Wed. Fri. Mon.	3.00	Lv.	Khabarovsk	Lv.	17.00	Fri. Sun. Tue. Thu.
Wed. Fri. Mon.	19.33	Ar.	Nikolsk-Ussuriisk	Ar.	12.24	Sat. Mon. Wed. Fri.
Wed. Fri. Mon.	19.48	Lv.	Nikolsk-Ussuriisk	Lv.	12.39	Sat. Mon. Wed. Fri.
Wed. Fri. Mon.	22.30	Ar.	Vladivostok	Ar.	16.00	Sat. Mon. Wed. Fri.

Distance—Moscow-Vladivostok—9331 Kms.

SCHEDULES

VLADIVOSTOK—Khabarovsk—Moscow—Berlin PARIS

Exp. No. 1				No. 43 Local			
Days of week	Arrival and Dep.	Stations	Arrival and Dep.	Days of week	Arrival and Dep.	Stations	Arrival and Dep.
Sat. Tue. Thu.	11.00 Lv.	Vladivostok	Lv. 12.30	Wed. Fri. Sun. Mon.	12.30	Paris	Ar. 6.46
Sat. Tue. Thu.	13.53 Ar.	Nikolsk-Ussuriisk	Ar. 15.59	Wed. Fri. Sun. Mon.	15.59	Berlin	Lv. 10.57
Sat. Tue. Thu.	14.05 Lv.	Nikolsk-Ussuriisk	Lv. 16.14	Wed. Fri. Sun. Mon.	16.14	Berlin	Ar. 10.53
Sun. Wed. Fri.	6.48 Ar.	Khabarovsk	Ar. 12.30	Thu. Sat. Mon. Tue.	12.30	Warsaw	Lv. 21.48
Sun. Wed. Fri.	7.13 Lv.	Khabarovsk	Lv. 13.00	Thu. Sat. Mon. Tue.	13.00	Warsaw	Ar. 21.22
Wed. Sat. Mon.	0.40 Ar.	Karimskaya	Ar. 23.00	Sun. Tue. Thu. Fri.	23.00	Stolpce	Lv. 13.25
Wed. Sat. Mon.	0.46 Lv.	Karimskaya	Lv. 23.08	Sun. Tue. Thu. Fri.	23.08	Stolpce	Ar. 12.42
Wed. Sat. Mon.	2.54 Ar.	Chita	Ar. 1.55	Mon. Wed. Fri. Sat.	1.55	Negoreloye	Lv. 14.09
Wed. Sat. Mon.	3.21 Lv.	Chita	Lv. 2.40	Mon. Wed. Fri. Sat.	2.40	Negoreloye	Ar. 12.49
Wed. Sat. Mon.	16.20 Ar.	Verkhneudinsk	Ar. 20.24	Mon. Wed. Fri. Sat.	20.24	Moscow	Lv. 22.45
Wed. Sat. Mon.	16.42 Lv.	Verkhneudinsk	Lv. 20.52	Mon. Wed. Fri. Sat.	20.52	Moscow	Lv. 22.45
Thu. Sun. Tue.	2.58 Ar.	Irkutsk	Ar. 11.04	Tue. Thu. Sat. Sun.	11.04	Berlin	Ar. 7.25
Thu. Sun. Tue.	3.33 Lv.	Irkutsk	Lv. 11.49	Tue. Thu. Sat. Sun.	11.49	Tilsit	Lv. 20.46
Fri. Mon. Wed.	5.47 Ar.	Krasnoyarsk	Ar. 19.05	Wed. Fri. Sun. Mon.	19.05	Tilsit	Ar. 20.22
Fri. Mon. Wed.	6.07 Lv.	Krasnoyarsk	Lv. 19.25	Wed. Fri. Sun. Mon.	19.25	Daugavpils	Lv. 13.18
Fri. Mon. Wed.	22.41 Ar.	Novosibirsk	Ar. 15.36	Thu. Sat. Mon. Tue.	15.36	Daugavpils	Ar. 12.58
Fri. Mon. Wed.	23.06 Lv.	Novosibirsk	Lv. 16.21	Thu. Sat. Mon. Tue.	16.21	Indra	Lv. 11.39
Sat. Tue. Thu.	10.48 Ar.	Omsk	Ar. 6.18	Fri. Sun. Tue. Wed.	6.18	Indra	Ar. 11.08
Sat. Tue. Thu.	11.08 Lv.	Omsk	Lv. 6.53	Fri. Sun. Tue. Wed.	6.53	Indra	Ar. 11.08
Sun. Wed. Fri.	6.21 Ar.	Sverdlovsk	Ar. 7.46	Sat. Mon. Wed. Thu.	7.46	Bigosovo	Lv. 11.38
Sun. Wed. Fri.	6.41 Lv.	Sverdlovsk	Lv. 8.20	Sat. Mon. Wed. Thu.	8.20	Bigosovo	Ar. 10.23
Sun. Wed. Fri.	14.42 Ar.	Perm	Ar. 18.15	Sat. Mon. Wed. Thu.	18.15	Moscow	Lv. 19.05
Sun. Wed. Fri.	15.02 Lv.	Perm	Lv. 18.41	Sat. Mon. Wed. Thu.	18.41	Moscow	Lv. 19.05
Mon. Thu. Sat.	0.50 Ar.	Kirov (Viatka)	Ar. 6.31	Sun. Tue. Thu. Fri.	6.31	Moscow	Lv. 19.05
Mon. Thu. Sat.	1.10 Lv.	Kirov (Viatka)	Lv. 7.17	Sun. Tue. Thu. Fri.	7.17	Moscow	Lv. 19.05
Mon. Thu. Sat.	20.30 Ar.	Moscow	Ar. 9.30	Mon. Wed. Fri. Sat.	9.30	Moscow	Lv. 19.05

Via Warsaw

	22.45	Lv.	Moscow		
	12.49	Ar.	Negoreloye		
Daily	14.09	Lv.	Negoreloye		
	12.42	Ar.	Stolpce		
	13.25	Lv.	Stolpce		
	21.22	Ar.	Warsaw		
	21.48	Lv.	Warsaw		

Via Tilsit

			Moscow	Lv.	19.05	
			Bigosovo	Ar.	10.23	
			Bigosovo	Lv.	11.38	
			Indra	Ar.	11.08	
			Indra	Lv.	11.39	Daily
			Daugavpils	Ar.	12.58	
			Daugavpils	Lv.	13.18	
			Tilsit	Ar.	20.22	
			Tilsit	Lv.	20.46	
	10.53	Ar.	Berlin	Ar.	7.25	
Daily	10.57	Lv.	Berlin	Lv.	10.57	Daily
	6.46	Ar.	Paris	Ar.	6.46	

Distance—Vladivostok-Moscow—9331 Klms.

SCHEDULES

PARIS—Berlin—Moscow—Manchouli AND RETURN

Days of week	Arrival and Dep.	Stations	Arrival and Dep.	Days of week
	23.45	Lv. Paris	Ar. 6.46	
Daily	17.40	Ar. Berlin	Lv. 10.57	Daily
	17.43	Lv. Berlin	Ar. 10.53	
	8.36	Ar. Warsaw	Lv. 21.48	
	9.12	Lv. Warsaw	Ar. 21.22	
Daily	17.03	Ar. Stolpce	Lv. 13.25	Daily
	17.33	Lv. Stolpce	Ar. 12.42	
	20.05	Ar. Negoreloye	Lv. 14.09	
	21.35	Lv. Negoreloye	Ar. 12.49	
	11.35	Ar. Moscow	Lv. 22.45	
	23.43	Lv. Berlin	Ar. 7.25	
	10.00	Ar. Tilsit	Lv. 20.46	
	10.27	Lv. Tilsit	Ar. 20.22	
Daily	19.45	Ar. Daugavpils	Lv. 13.18	Daily
	20.00	Lv. Daugavpils	Ar. 12.58	
	21.24	Ar. Indra	Lv. 11.39	
	21.45	Lv. Indra	Ar. 11.08	
	23.15	Ar. Bigosovo	Lv. 11.38	
	0.45	Lv. Bigosovo	Ar. 10.23	
	15.08	Ar. Moscow	Lv. 19.05	

No. 2 Express

*Thur. Sun.	14.20	Lv. Moscow	Ar. 20.30	Wed. Sun.
Fri. Mon.	9.12	Ar. Kirov (Viatka)	Lv. 1.10	Wed. Sun.
Fri. Mon.	9.32	Lv. Kirov (Viatka)	Ar. 0.50	Wed. Sun.
Fri. Mon.	19.23	Ar. Perm	Lv. 15.02	Tue. Sat.
Fri. Mon.	19.43	Lv. Perm	Ar. 14.42	Tue. Sat.
Sat. Tue.	4.02	Ar. Sverdlovsk	Lv. 6.41	Tue. Sat.
Sat. Tue.	4.22	Lv. Sverdlovsk	Ar. 6.21	Tue. Sat.
Sat. Tue.	22.52	Ar. Omsk	Lv. 11.08	Mon. Fri.
Sat. Tue.	23.12	Lv. Omsk	Ar. 10.48	Mon. Fri.
Sun. Wed.	11.15	Ar. Novosibirsk	Lv. 23.06	Sun. Thur.
Sun. Wed.	11.40	Lv. Novosibirsk	Ar. 22.41	Sun. Thur.
Mon. Thur.	4.32	Ar. Krasnoyarsk	Lv. 6.07	Sun. Thur.
Mon. Thur.	4.52	Lv. Krasnoyarsk	Ar. 5.47	Sun. Thur.
Tues. Fri.	7.28	Ar. Irkutsk	Lv. 3.33	Sat. Wed.
Tues. Fri.	8.03	Lv. Irkutsk	Ar. 2.58	Sat. Wed.
Tues. Fri.	18.47	Ar. Verkhneudinsk	Lv. 16.42	Fri. Tues.
Tues. Fri.	19.12	Lv. Verkhneudinsk	Ar. 16.20	Fri. Tues.
Wed. Sat.	8.37	Ar. Chita	Lv. 3.21	Fri. Tues.
Wed. Sat.	9.01	Lv. Chita	Ar. 2.54	Fri. Tues.
Wed. Sat.	10.56	Ar. Karimskaya	Lv. 0.46	Fri. Tues.
Wed. Sat.	11.01	Lv. Karimskaya	Ar. 0.40	Fri. Tues.
Thur. Sun.	1.33	Ar. Manchouli (Otpor)	Lv. 10.47	Thur. Mon.*

*DeLuxe Train.

Distance—Manchouli (Otpor)-Moscow: 6711 Klms.

FAR EASTERN RAIL SCHEDULES

MANCHOULI—DAIREN—KOBE—SHANGHAI—TOKYO

CLASSES TRAINS	1 2 3		1 2 3		1 2 3		1 2 3		1 2 3		DAILY SERVICE
	D & S	#12	Exp. D	D	D & S	#602	#604	#14	#32	#16	
	#904		"Asia"		"Hato"		Exp.				
Days											
Manchouli	1st	Lv.	9.50								DAILY SERVICE
Harbin	2nd	Ar.	7.20								
Harbin	2nd	Lv.		9.00		9.40		13.10	23.00		
Hsinking	2nd	Ar.	Tr. #28	13.52		15.40		19.35	6.25		
			2 & 3								
Hsinking	2nd	Lv.	S	14.00	9.00	16.00		20.00			
Mukden	2nd	Ar.		17.38	13.13	22.30		1.25			
Mukden	2nd	Lv.		22.50	17.43	13.19		1.35			
Dairen	2nd	Ar.		8.00	22.30	19.15		8.40			
Dairen	1st day	Lv.	11.00								
Tsingtao	2nd day	Lv.	12.00	By Steamer	NOT DAILY SERVICE These steamers sail 6—7 times a month						
Shanghai	3rd day	Ar.	15.00								
Dairen	1st day	Lv.	10.00								
Moji	3rd day	Lv.	13.00	By Steamer							
Kobe	4th day	Ar.	7.30								
DAILY											
			#401 Exp. 1 2 3					#2 Exp. Hikari 1 2 3			
Mukden	1st day	Lv.	14.00		DAILY			D & S			
Tientsin E.	2nd day	Lv.	6.35	Hsinking	1st day	Lv.	7.00				
Peiping (Cent.)	2nd day	Ar.	9.45	Mukden	1st day	Ar.	11.28				
				Mukden	1st day	Lv.	11.40				
				Antung	1st day	Lv.	17.40				
				Keijo (Seoul)	2nd day	Lv.	3.05				
				Fusan (pier)	2nd day	Ar.	10.50				
Fusan	Lv.	11.30	23.30	8 hrs.	Daily						
Shimonoseki	Ar.	19.30	7.30	By Steamer							

CLASSES TRAINS	Exp. #8 1 2 3		Exp. #2 "Fuji" D & S		DAILY SERVICE
	D & S	1 2 3	D & S	1 2 3	
Shimonoseki	1st day	Lv.	9.15	20.30	DAILY SERVICE
Kobe	1st day	Ar.	19.17	6.14	
Kyoto	1st day	Ar.	20.40	7.29	
Tokyo	2nd day	Ar.	7.10	15.25	
				Daily	

*Harbin-Dairen Express "Asia." Reservations must be telegraphed in order to insure seats. For additional speed supplement see rate sheet.

Note: D—Dining Car. S—Sleeping Car.

FAR EASTERN RAIL SCHEDULES

TOKYO—SHANGHAI—KOBE—DAIREN—MANCHOULI

CLASSES TRAINS	Exp. #7 1 2 3		Exp. #1 "Fuji" 1 2 3		DAILY SERVICE
	D & S	1 2 3	D & S	1 2 3	
JAPAN/CHINA					
Tokyo	1st day	Lv.	15.00	10.30	Daily
Kyoto	1st day	Lv.	22.48	19.55	
Kobe	2nd day	Lv.	0.05	21.22	
Shimonoseki	2nd day	Ar.	9.30	7.00	
Shimonoseki	Lv.	10.30	22.30	8 hrs.	Daily
Fusan	Ar.	18.00	6.30	By Steamer	
DAILY					
			#402 Exp. 1 2 3		#1 Exp. Hikari 1 2 3
Peiping (Cent.)	1st day	Lv.	20.15		
Tientsin E.	1st day	Lv.	23.55		
Mukden	2nd day	Ar.	16.15		
			DAILY		
			Fusan	1st day	Lv. 19.20
			Keijo (Seoul)	2nd day	Lv. 3.15
			Antung	2nd day	Lv. 11.00
			Mukden	2nd day	Ar. 16.20
			Mukden	2nd day	Lv. 16.30
			Hsinking	2nd day	Ar. 21.00
			Kobe	1st day	Lv. 16.00
			Moji	2nd day	Lv. noon
			Dairen	4th day	Ar. 14.00
NOT DAILY SERVICE					
These steamers sail 6—7 times a month					
			Shanghai	1st day	Lv. 9.00
			Tsingtao	2nd day	Lv. 5.00
			Dairen	3rd day	Ar. 12.00

CLASSES TRAINS	#27 Tr. 2 & 3		#11 Exp. Asia* 1 2 3		#13 Exp. Hato 1 2 3		#31 Exp. D 1 2 3		#15 Exp. D & S 1 2 3		DAILY SERVICE
	D & S	1 2 3	D & S	1 2 3	D & S	1 2 3	D & S	1 2 3	D & S		
Dairen	Lv.	22.00	9.00	9.30		20.00				DAILY SERVICE	
Mukden	Ar.	8.20	13.47	15.24		3.08					
Mukden	Lv.		13.52	15.30	9.00	3.20					
			#903 1 2 3								
Hsinking	Ar.		17.30	19.45	15.00	8.50					
			D & S								
Hsinking	Lv.		17.40		16.00		9.05	23.00			
Harbin	Ar.		22.30		22.00		15.40	6.20			
Harbin	Lv.	9.35									
Manchouli	Ar.	8.15									

*Harbin-Dairen Express "Asia." Reservations must be telegraphed in order to insure seats. For additional speed supplement see rate sheet.

Note: D—Dining Car. S—Sleeping Car.

TRANS-SIBERIAN RATES FOR TOURISTS - 1936

WESTBOUND RATES - FAR EASTERN POINTS TO MOSCOW

SUBJECT TO CHANGE WITHOUT NOTICE

FROM: MANCHURIA (Otpor) TO				FROM: VLADIVOSTOK				
Wagons-Lits	"Soft"	"Hard"						
I	II	II	III	WESTBOUND VIA NEGORELOYE-STOLPCE				
I	II	II	III	I	II	II	III	III
\$117.59	\$ 97.11	\$ 84.83	\$ 56.57	MOSCOW	\$148.57	\$123.66	\$102.00	\$ 72.07
141.13	116.59	100.79	67.95	LENINGRAD, via Moscow (Red Arrow).....	172.11	143.14	117.96	83.45
136.39	112.51	97.53	65.52	NEGORELOYE, via Moscow.....	167.37	138.66	114.70	81.02
161.49	131.09	116.11	77.81	BERLIN, via Warsaw.....	192.47	157.24	133.28	93.31
177.37	141.98	127.00	85.14	BREMEN, via Warsaw, Berlin.....	208.35	168.13	144.17	100.64
192.19	152.54	137.56	92.01	BRUSSELS, via Warsaw, Berlin.....	223.17	178.69	154.73	107.51
213.82	167.48	152.50	101.09	CHERBOURG, via Warsaw, Berlin, Paris.....	244.80	193.63	169.67	116.59
208.01	163.14	148.16	96.56	GENOA, via Moscow, Warsaw, Vienna.....	238.99	189.29	165.33	112.06
173.92	139.71	124.73	83.51	HAMBURG, via Moscow, Warsaw, Berlin.....	204.90	165.86	141.90	99.01
209.29	163.59	148.61	99.14	HAVRE, via Moscow, Warsaw, Berlin, Paris.....	240.27	189.74	165.78	114.64
156.62	124.31	108.51	71.15	HELSINGFORS, via Moscow, Leningrad.....	187.60	150.86	125.68	86.65
221.27	177.74	162.76	112.50	LIVERPOOL, via Warsaw, Berlin, Hook of Holland.....	252.25	203.89	179.93	128.00
209.57	166.04	151.06	105.47	LONDON, via Warsaw, Berlin, Hook of Holland.....	240.55	192.19	168.23	120.97
201.80	158.53	143.55	95.81	PARIS, via Warsaw, Berlin.....	232.78	184.68	160.72	111.31
223.82	170.14	155.16	109.57	PLYMOUTH, via Warsaw, Berlin, Hook of Holland.....	254.82	193.29	172.33	125.07
187.67	149.56	134.58	90.59	ROTTERDAM, via Warsaw, Berlin.....	218.67	175.71	151.75	106.09
213.67	168.54	153.56	107.97	SOUTHAMPTON, via Warsaw, Berlin, London.....	244.67	194.69	170.73	123.47
165.28	133.51	118.53	89.43	VIENNA, via Moscow, Warsaw, Petrovice.....	196.28	159.66	135.70	94.93
147.45	120.81	105.83	71.06	WARSAW, via Moscow.....	178.45	146.96	123.00	96.56

TRANSIT Passengers (Those NOT purchasing Intourist services, and in *direct transit* via the U.S.S.R.) should add to the above rates the following amounts:

	Wagons-Lits			
	I	II	"Soft" II	"Hard" III
Reservation Charge:				
Otpor or Vladivostok.....	\$ 5.40	\$3.60	\$2.70	\$1.30
For Sole Occupancy of Compartment: Fr. Otpor.....	70.45	48.50
For Sole Occupancy of Compartment: Fr. Vladivostok.....	74.55	51.15
Linen:				
For I and II Wagons Lits, included in cost of ticket.....
For "Soft" or "Hard" Classes, add.....90	.90
(For every 3 days and nights, or every fresh set supplied)				

NOTES: (a) Rates include: Sleeper, express supplement, linen and reservation charge for Soviet portion of trip for Tourists, also sleeper for First and Second Class, from Leningrad to Helsingfors.

(b) II W/L rates in the U.S.S.R. allows Second Class rail on the Continent and Third Class rail in England.

WESTBOUND transportation orders exchanged at Intourist, Vladivostok, in Otpor-Trans-Baikal R/R Station Agent.

EASTBOUND RATES - MOSCOW TO FAR EASTERN POINTS

SUBJECT TO CHANGE WITHOUT NOTICE

From MOSCOW to:	Wagons-Lits		"Soft" II	"Hard" III
	I	II		
VLADIVOSTOK	\$148.57	\$123.66	\$102.00	\$ 72.07
TSURUGA (SS. sails from Vladivostok 10th, 20th and 30th of month).....	165.37	132.82	111.16
YOKOHAMA (Express Supplement and Sleeper not included for Japan).....	171.01	138.62	116.96
TOKIO (Express Supplement and Sleeper not included for Japan).....	171.24	138.77	117.11
From MOSCOW to:				
MANCHURIA (Otpor)	117.59	97.11	84.83	56.57
DAIREN, via Harbin, Hsinking.....	146.26	114.65	102.37	67.61
HARBIN	132.86	106.27	93.99	62.68
HSINKING, via Harbin.....	136.80	108.64	96.36	64.27
MUKDEN, via Harbin, Hsinking.....	140.90	111.26	98.98	65.76
PEIPING, via Harbin, Hsinking, Mukden.....	155.10	120.51	108.23	70.39
SHANGHAI, via Harbin, Hsinking, SS. from Dairen).....	169.21	129.95	117.67	73.12
	1st Class		2nd Class	
	Lower	Upper	Lower	Upper
Sleeper rates (per night).....	\$2.29	\$1.64	\$1.47	\$1.00
SUPPLEMENTARY RATES FOR "ASIA" EXPRESS HARBIN to				
HSINKING	1.2864	.32
MUKDEN	1.92	1.28	.64
DAIREN	2.40	1.60	.80

Reservations for "ASIA" Express must be telegraphed in advance to ensure seats. Passenger pays for cable or telegram.

NOTES: (A) Above rates include: Sleeper, express supplement, linen and reservation charge for Soviet portion of trip for *Tourists* only: Transit passengers pay supplements shown on page

(B) II W/L rates comprise Second Class rail from Soviet border; II Cl. Dairen-Shanghai.

(C) III Cl. rail in the U.S.S.R., but II Cl. on steamer Vladivostok-Tsuruga, and Second Class rail in Japan.

**MEAL RATES ON TRANS-SIBERIAN TRAINS WITHIN THE
SOVIET UNION**

All Trans-Siberian Express trains carry dining cars.

	1st Category	2nd Category
Breakfast	\$0.70	\$0.45
Dinner	1.35	1.05
Supper	1.05	0.85
	<hr/>	<hr/>
Cost per day:	\$3.10	\$2.35

Negoreloye or Bigosovo
to:

Manchuria—7 day trip	\$21.70	\$16.45
Vladivostok—10 day trip	31.00	23.50

(At the time rail ticket is purchased meals on the Trans-Siberian Express should be bought.)

STEAMER SCHEDULE: VLADIVOSTOK-TSURUGA

STEAMERS: Japanese steamer (Mail-express "AMAKUSA-MARU" with capacity of 1st class—39; 2nd class—24; 3rd class—a dormitory with partitions accommodating 150 persons.)

SCHEDULE: a) Direct Sailing		Dates of the Month
Vladivostok	Lv.*	10th, 20th and 30th
Yukki	Ar. & Lv.	11th, 21st and 31st/1st
Seisin	Ar. & Lv.	11th, 21st and 31st/1st
Tsuruga	Ar.	13th, 23rd and 2nd/3rd
 b) Return sailing		 Dates of the Month
Tsuruga	Lv.	6th, 16th and 26th
Seisin	Ar. & Lv.	8th, 18th and 28th
Yukki	Ar. & Lv.	8th, 18th and 28th
Vladivostok	Ar.	9th, 19th and 29th

*Steamer sails from Vladivostok at 1.00 P. M. Sale of tickets is discontinued one day before the sailing.

For further information apply to:

INTOURIST, Inc.
545 Fifth Avenue
New York

